


## RECALL 26V041 / 2026-028 REMEDY INSTRUCTIONS

|  |   |   |
|--|---|---|
| <br><b>FOREST RIVER</b> | Make(s): COLLINS SCHOOL BUSES<br>Model(s): SEE BELOW<br>Model Year(s): 2026-2027  | Repair Code: RC-084-00-09-004347<br>Allotted Time: .50 HRS<br>Inspection Code: N/A<br>Allotted Time: N/A            |
|  | Concern: The adhesive bead placement was not located under the mounting flanges of the body panel joints and thus not performing its intended purposes, resulting in a non-compliance of FMVSS 221. | Photo(s) Required: N/A<br>Prior Authorization Required: YES<br>Part(s) Kit Number: SEE BELOW<br>Part(s) Return: N/A |

**Turn off LP Gas at LPG Tank(s). Disconnect the vehicles' battery Positive and Negative, disconnect any House battery(s) Positive and Negative, if equipped with a generator ensure it is off and lastly, ensure the vehicle is disconnected from shore power. Block any tires/wheels to prevent the vehicle from rolling. Failure to do so may result in electrocution, fire or other personal injury, property damage and/or death.**

CERTAIN 2026 COLLINS MFSAB SCHOOL BUSES CLL-DH416-F211G, CLL-DH500-C314G, CLL-DH500-F312G, CLL-SH400-C109G, CLL-SL400-C109G, AND CLL-TH500-F311G

CERTAIN 2026-2027 COLLINS SCHOOL BUSES CL9-DH400-C212G, CL9-DH400-F211G, CL9-DH416-C212G, CL9-DH416-F211G, CL9-DH500-C312G, CL9-DH500-C314G, CL9-DH500-F312G, CL9-DH500-F314G, CL9-DH516-C314G, CL9-DH516-F314G, CL9-SH400-C109G, CL9-TH408-F195G, CL9-TH500-F311G, CL9-TH516WR-F311G

CERTAIN 2026-2027 COLLINS MAGELLAN SCHOOL BUSES MG3-DH500-C314G AND 2026 MG3-TH500-F311G

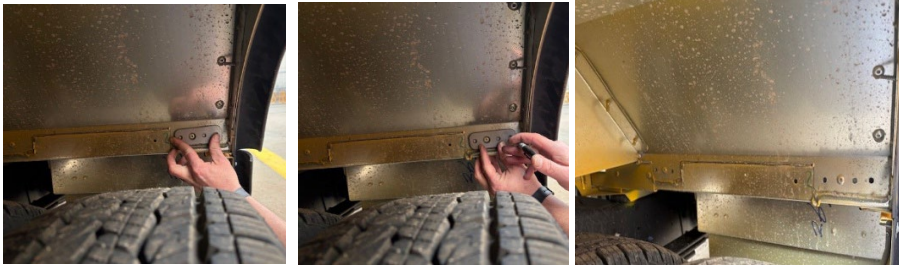
CERTAIN 2027 COLLINS MAGELLAN MFSAB SCHOOL BUSES MG1-SH400-C109G

CERTAIN 2027 COLLINS MID BUS SCHOOL BUSES MB8-DH516-C314G

### **SEE ATTACHED REMEDY INSTRUCTIONS**

- PARTS AND TEMPLATE WILL BE SENT FROM COLLINS TO DEALER PER VIN LIST**

1. Determine model of bus: TLXXX, THXXX, SLXXX, SHXXX, DHXXX
2. Verify current condition of wheel well attachment per model
  - a. See Figure 2.1 for DHXXX models
  - b. See Figure 3.1 for SLXXX / SHXXX models
  - c. See Figure 4.1 for TLXXX / THXXX models
3. Use correct drill template referenced by model (Provided)
  - a. See Figure 1



4. Line up correct drill template with existing OEM installed rivet head
  - a. See Figure 2.2 for DHXXX models
  - b. See Figure 3.2 for SLXXX / SHXXX models
  - c. See Figure 4.2 for TLXXX / THXXX models
5. Pilot drill indicated 1/4" holes, 1" apart.



6. Install and tighten a 1/4-20 flange head bolt and nut in each drilled hole to 10 ft.lbs (Provided)
7. Bolt head should be on the inside of the wheel well



8. Mudflaps may be present on some units and need to be removed prior to repair



9. Repeat this process for all 4 wheel well flanges on both the passenger and driver side
10. Add undercoating to installed 1/4-20 hardware and any areas that may have been removed
11. Reinstall mudflap if present.