

Recall Numbers:	NHTSA: 26E-004 (Lippert); NHTSA: 26V-032 (SB) and 26V-033 (NSB) - (Blue Bird)		
	Transport Canada: 2026-021 (SB); Blue Bird Recall Numbers: R26AA (US) R26AA-C (Canada)		
Product:	Window Glass		
Date:	March 9, 2026	Labor Rate:	0.2 hr Inspection (Bus)/0.2 hr Procedure (Window)

Purpose

This document refers to the procedure for adding etched identification to a glass window.

Safety

This document provides general instructions. Many variables can change the circumstances of any procedure, i.e. the degree of difficulty involved in the service operation and the ability level of the individual performing the operation. This document cannot begin to plot out procedures for every possibility, but will provide the general instructions for effectively installing, removing or servicing the system. In the event the skill level required is too advanced or the procedure too difficult, a certified technician should be consulted before performing the necessary operation. Failure to correctly install, remove or service the system may result in voiding the warranty, inflicting injury or even death.

⚠ CAUTION

The "CAUTION" symbol above is a sign that a safety risk is involved and may cause personal injury and/or product or property damage if not safely adhered to and within the parameters set forth in this manual.

⚠ CAUTION

Etching compound is highly corrosive. Nitrile gloves must be worn during this procedure.

⚠ CAUTION

Etching compound is for use on glass only. Follow all safety notices on the etching compound container.

⚠ CAUTION

Do NOT rinse the compound, brush or cloth down the drain as the compound can damage pipes.

Required Resources

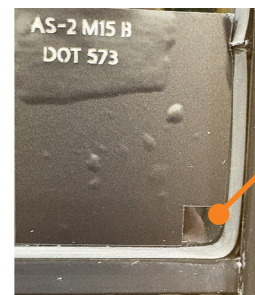
- Dealer/Customer Supplied
 - Safety glasses
 - Glass cleaner
 - Plastic razor blades
- Etching Kits - PN 2026060327
 - Nitrile gloves
 - DOT stencil for the glass
 - Etching compound



Qty. 1 - Driver's Window Stencil



Qty. 10 - Sash Window Stencils



Window Stencil Index Point

Recall Numbers:	NHTSA: 26E-004 (Lippert); NHTSA: 26V-032 (SB) and 26V-033 (NSB) - (Blue Bird)		
	Transport Canada: 2026-021 (SB); Blue Bird Recall Numbers: R26AA (US) R26AA-C (Canada)		
Product:	Window Glass		
Date:	March 9, 2026	Labor Rate:	0.2 hr Inspection (Bus)/0.2 hr Procedure (Window)

Inspection

1. Visually inspect the upper and lower glass of each bus window. Look for the DOT logo.
 - a. Sash Window - Correct (Fig. 1)
 - b. Sash Window - Incorrect (Fig. 2)
2. Note each window where the DOT logo is not compliant (Fig. 2).
 - a. Driver's Window - Correct (Fig. 3)
 - b. Driver's Window - Incorrect (Fig. 4)

Fig. 1



Fig. 2



Fig. 3

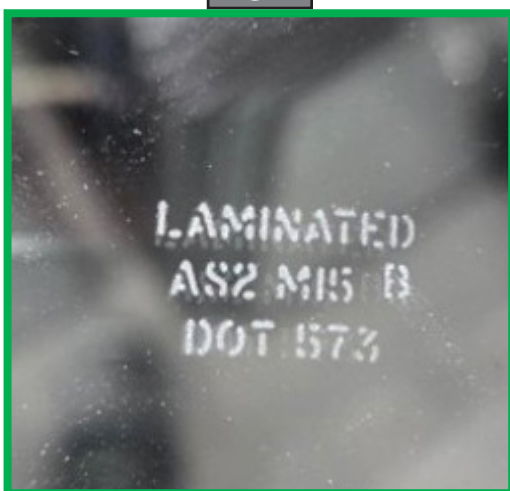


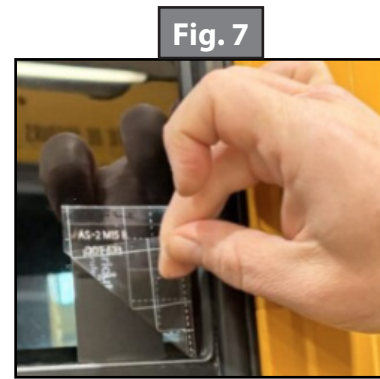
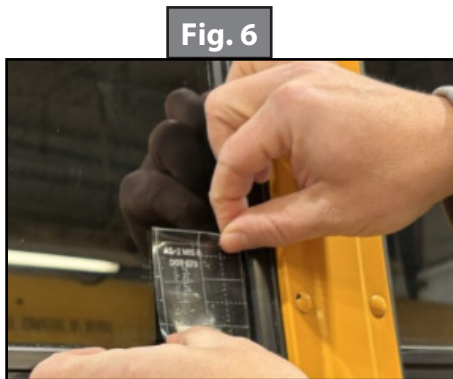
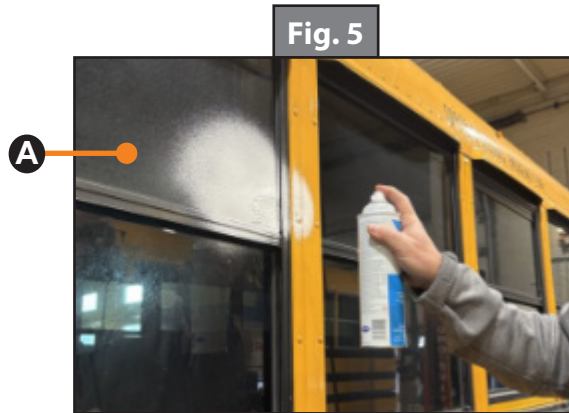
Fig. 4



Recall Numbers:	NHTSA: 26E-004 (Lippert); NHTSA: 26V-032 (SB) and 26V-033 (NSB) - (Blue Bird)		
	Transport Canada: 2026-021 (SB); Blue Bird Recall Numbers: R26AA (US) R26AA-C (Canada)		
Product:	Window Glass		
Date:	March 9, 2026	Labor Rate:	0.2 hr Inspection (Bus)/0.2 hr Procedure (Window)

Preparation

1. Clean the glass (Fig. 5A) using glass cleaner to ensure good adhesion of the template.



2. Apply stencil (Fig. 6) directly above the DOT marking on the glass.
3. Remove the backing of the stencil and affix to the window using the bottom corner and right side of the frame as reference points (Fig. 6).

NOTE: Be sure to rub the template sticker several times to ensure it is well adhered evenly on the glass.

4. Once the sticker is well adhered to the glass, remove the transfer tape to expose the template (Fig. 7).

Recall Numbers:	NHTSA: 26E-004 (Lippert); NHTSA: 26V-032 (SB) and 26V-033 (NSB) - (Blue Bird)		
	Transport Canada: 2026-021 (SB); Blue Bird Recall Numbers: R26AA (US) R26AA-C (Canada)		
Product:	Window Glass		
Date:	March 9, 2026	Labor Rate:	0.2 hr Inspection (Bus)/0.2 hr Procedure (Window)

Instructions

1. Liberally apply the etching compound to the lettering portion by squeezing the bottle and tapping the lettered area of the stencil (Fig. 8).
2. Let the compound stand for 1 minute and reapply.
3. Let the reapplied etching compound stand for 5 minutes. Remove the excess compound with lukewarm water and a clean soft cloth.

NOTE: Dispose of the compound by neutralizing it with baking soda until bubbling ceases. This turns the mixture into a safer, inert compound. The compound can also be made into a solid by mixing with cat litter, sand, or plaster of Paris. Either mixture can be put in the regular trash.

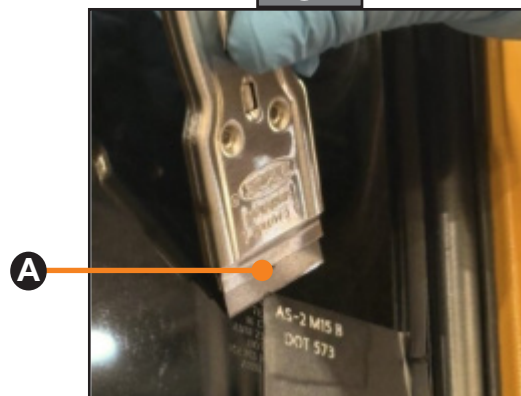
⚠ CAUTION

Do NOT rinse the compound, brush or cloth down the drain as the compound can damage pipes.

Fig. 8



Fig. 9



4. Remove the stencil (Fig. 9).

NOTE: If necessary, use the included plastic razor blade to remove the stencil (Fig. 9A).

5. Clean newly etched glass with glass cleaner to remove any residual etching compound.