

## **Recall Repair Instructions**

**NHTSA Recall # 26V-021**

**Lippert Recall # 26E-002**

**Tiffin Motorhomes Recall # VL-106**

**Models Involved:** 2022 & 2023 Vanleigh Ambition 5th Wheel RV's

**Purpose:** To add reinforcement to the hinge area of LCI 3000 Series Weatherproof Hidden Hinge Ramp Door.

**FLAT RATE CODE & TIME ALLOWED:** *When filing the warranty claim for payment, please use the following flat rate code.*

**Involved and repaired - 7910RC01 for 1.00 hours**

**No authorization is required for work completed at the flat rate times stated on the work instructions.**

Use "**VL-106**" as the authorization on claim for payment of labor and needed shop supplies.

Lippert Components, Inc is allowing 1 hour to have this repair completed. Any questions about this safety recall should be directed to Lippert at 432-547-7378 or by email at customerservice@lci1.com. Tiffin Motorhomes **CANNOT** authorize extra time.

**Tools needed:**

See instructions from LCI

**Parts Needed:**

5190044 – LCI part # 2026051116, Hidden Hinge Core Reinforcement Kit, Black

## **Repair Instructions**

1. Follow the instructions from LCI on pages 2-8.

# 3000 SERIES WEATHERPROOF HIDDEN HINGE RAMP DOOR REINFORCEMENT

Recall Number:	26E-002		
Product:	3000 Series Weatherproof Hidden Hinge Ramp Doors		
Date:	02/10/2026	Labor Rate:	1.0 Hour

## Purpose

This document refers to adding reinforcement to the hinge area of the 3000 Series Weatherproof Hidden Hinge Ramp Door.

## Safety

This document provides general instructions. Many variables can change the circumstances of any procedure, i.e. the degree of difficulty involved in the service operation and the ability level of the individual performing the operation. This document cannot begin to plot out procedures for every possibility, but will provide the general instructions for effectively installing, removing or servicing the system. In the event the skill level required is too advanced or the procedure too difficult, a certified technician should be consulted before performing the necessary operation. Failure to correctly install, remove or service the system may result in voiding the warranty, inflicting injury or even death.

### **WARNING**

The "WARNING" symbol above is a sign that a procedure has a safety risk involved and may cause death, serious personal injury, severe product and/or property damage if not performed safely and within the parameters set forth in this document.

### **CAUTION**

The "CAUTION" symbol above is a sign that a procedure has a safety risk involved and may cause personal injury, product and/or property damage if not performed safely and within the parameters set forth in this document.

### **CAUTION**

Moving parts can pinch, cut or crush. Use care and keep clear.

## Resources Required

- Two people, depending on the task
- Tape measure
- 13/32" and assorted smaller drill bits
- Cordless or electric drill
- 1/2" wrench or socket
- T55 star bit
- All-weather silicone
- Torque wrench rated up to 48 in-lb
- Permanent marker or scribe

# 3000 SERIES WEATHERPROOF HIDDEN HINGE RAMP DOOR REINFORCEMENT

Recall Number:	26E-002		
Product:	3000 Series Weatherproof Hidden Hinge Ramp Doors		
Date:	02/10/2026	Labor Rate:	1.0 Hour

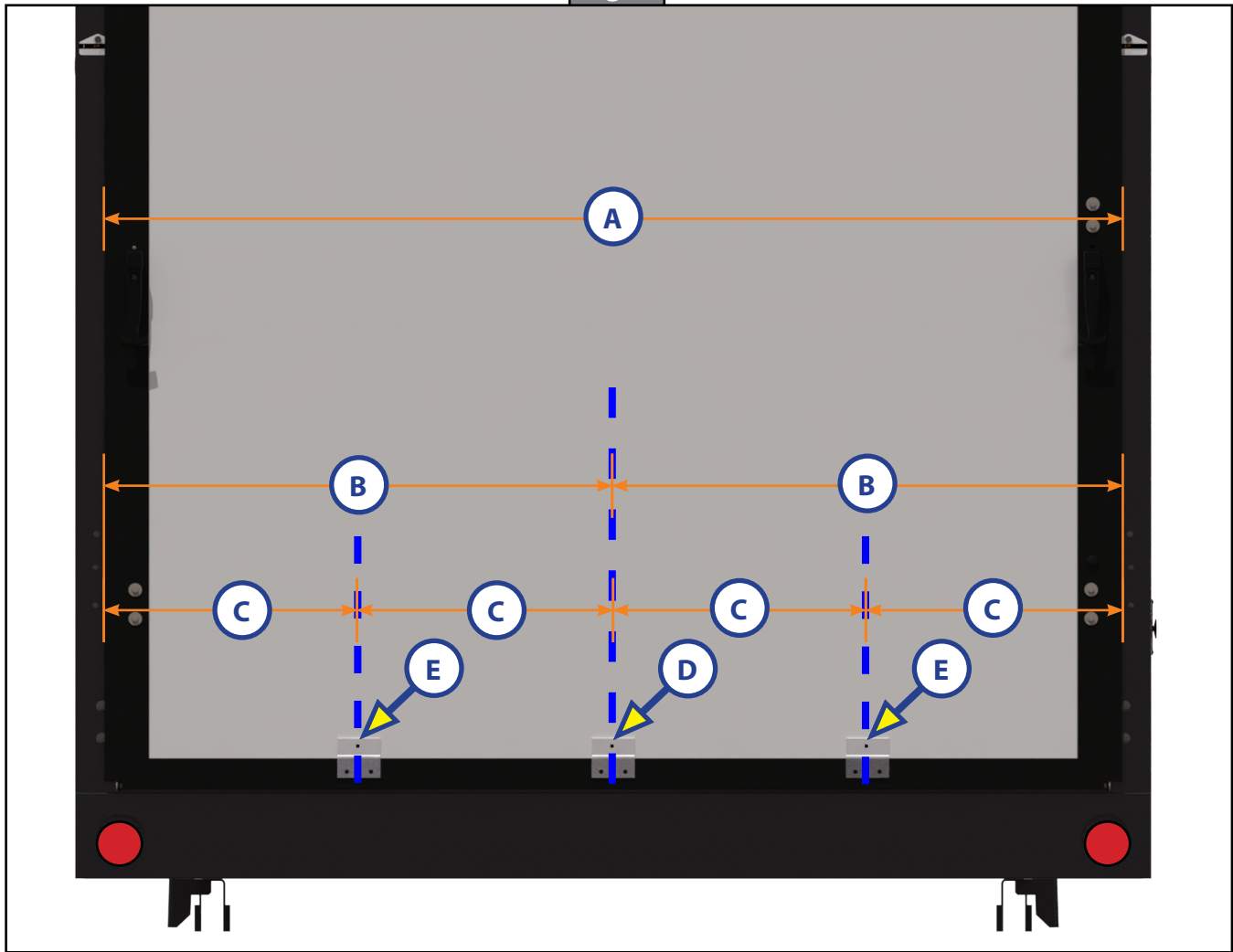
## Preparation

1. Use a tape measure to find the width of the door (Fig. 1A).
  - A. Divide the door's width by two (2) then use that dimension to measure from the door edges inward and mark the centerline location (Fig. 1B).

**NOTE:** Measured centerline of door (Fig. 1B) is the placement for first bracket (Fig.1D).

- B. Divide each figure 1B measurement by two (2) then use that dimension (Fig. 1C) to measure from the door edges inward, or the centerline (Fig. 1D) outward, and mark the locations of the other two (2) brackets (Fig. 1E).

Fig. 1



# 3000 SERIES WEATHERPROOF HIDDEN HINGE RAMP DOOR REINFORCEMENT

Recall Number:	26E-002		
Product:	3000 Series Weatherproof Hidden Hinge Ramp Doors		
Date:	02/10/2026	Labor Rate:	1.0 Hour

## Instructions

1. Using one of the brackets as a drill guide, set the ridge on the backside of the bracket (Fig. 2A) onto the top edge of the lower extrusion for proper alignment. Then align the center of the bracket with its corresponding centerline (Fig. 3).
  - A. Mark the top hole (Fig. 3A) of the bracket at each centerline location.
  - B. At all three hole locations on each bracket, use a small drill bit to drill pilot holes through the door's core and extruded frame (Fig. 3).
  - C. Set the bracket aside then, using a 13/32" drill bit, drill through holes at each pilot hole location.

Fig. 2

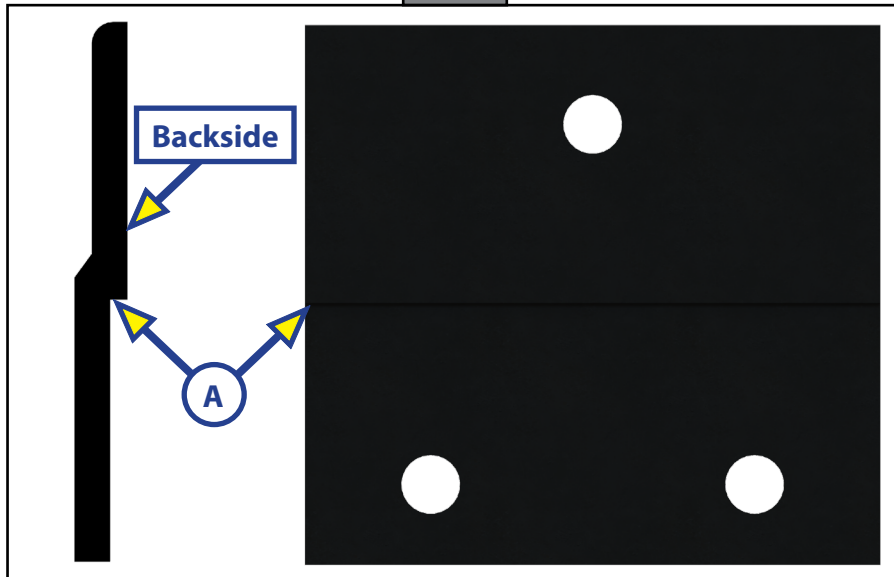
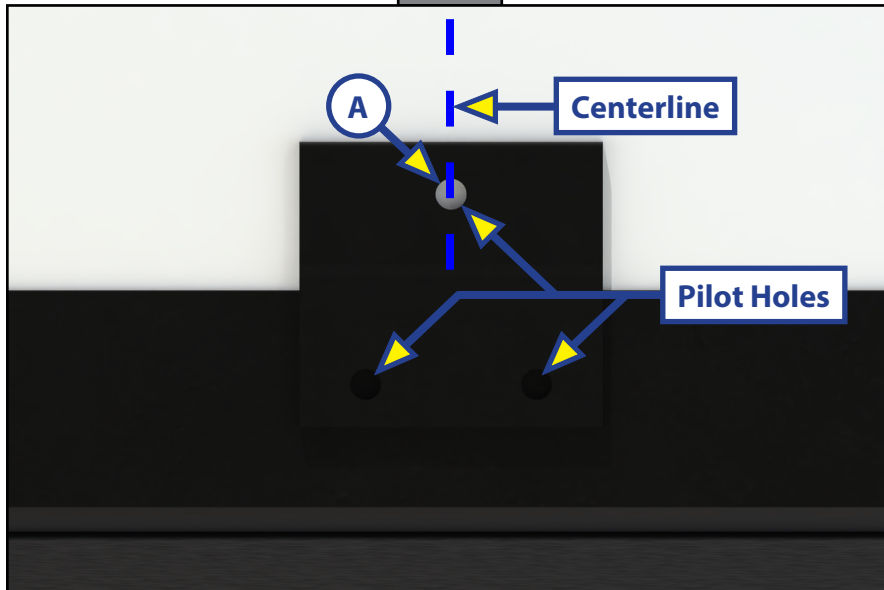


Fig. 3

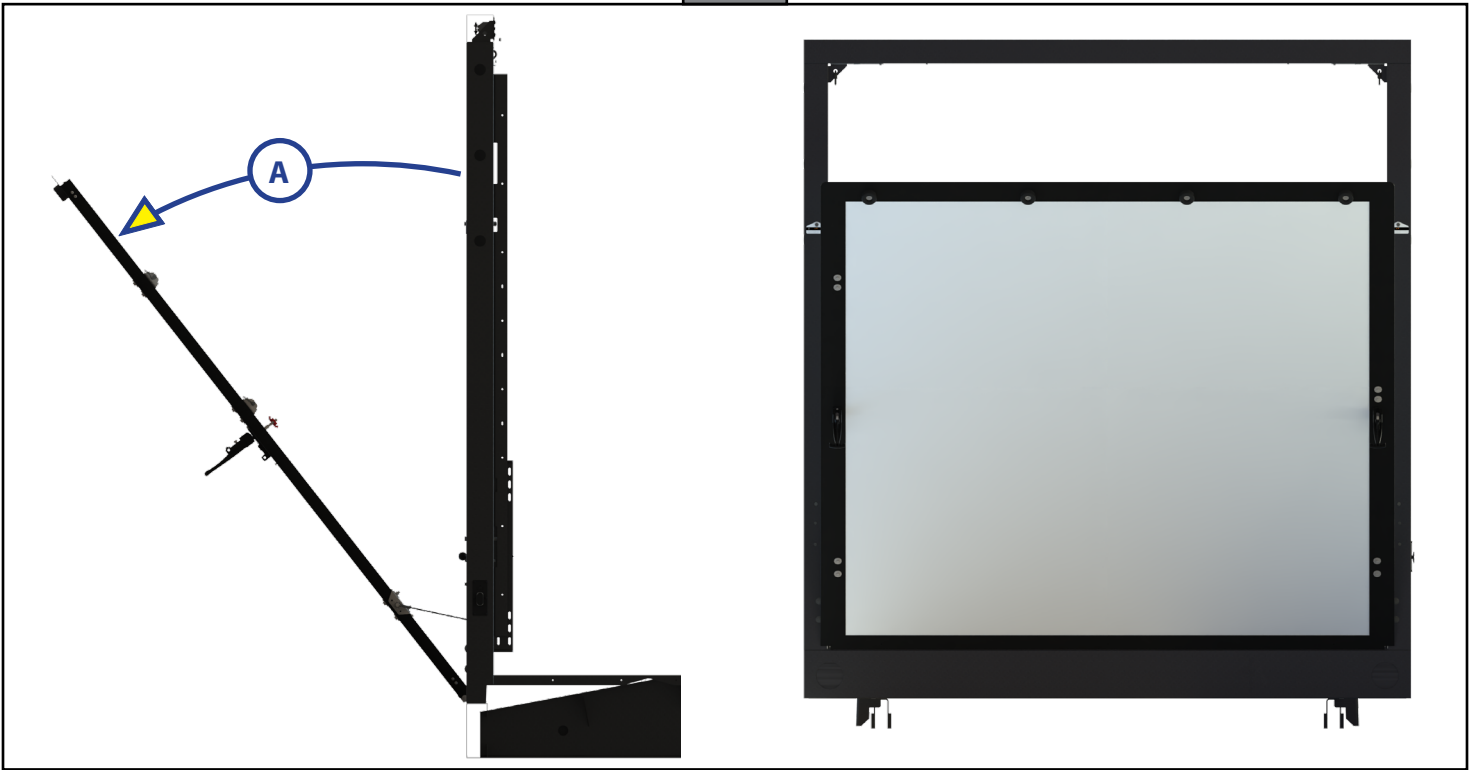


# 3000 SERIES WEATHERPROOF HIDDEN HINGE RAMP DOOR REINFORCEMENT

Recall Number:	26E-002		
Product:	3000 Series Weatherproof Hidden Hinge Ramp Doors		
Date:	02/10/2026	Labor Rate:	1.0 Hour

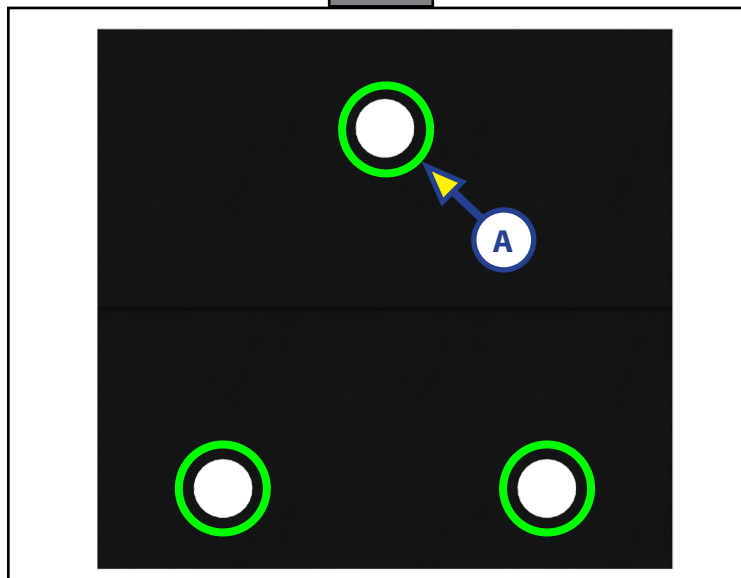
2. Open the ramp door approximately two feet to make bracket installation easier (Fig. 4A).

Fig. 4



3. On the backside of each bracket, apply a thin layer of all-weather clear silicone sealant (green circles) around all three mounting holes (Fig. 5A).

Fig. 5

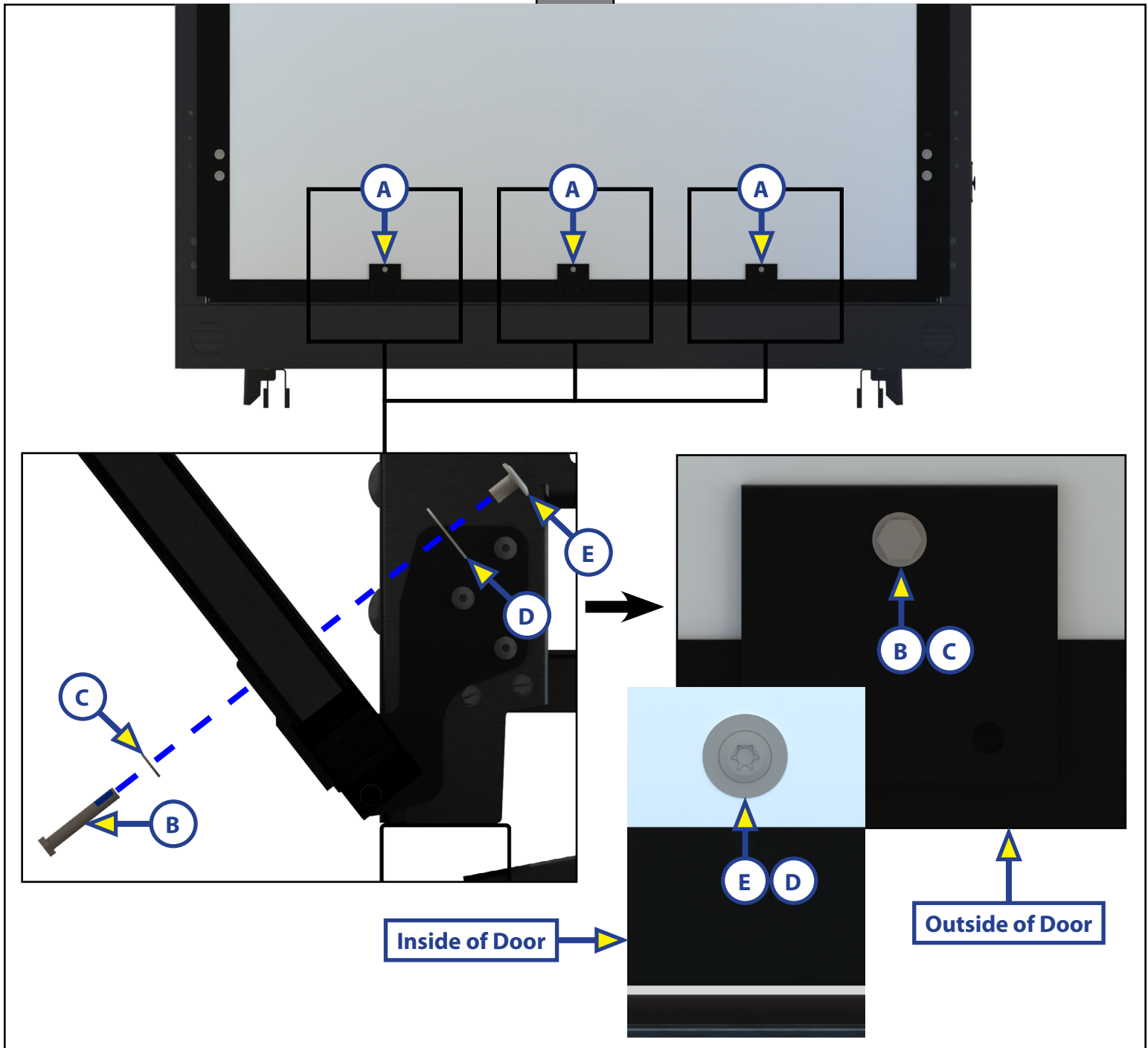


# 3000 SERIES WEATHERPROOF HIDDEN HINGE RAMP DOOR REINFORCEMENT

Recall Number:	26E-002		
Product:	3000 Series Weatherproof Hidden Hinge Ramp Doors		
Date:	02/10/2026	Labor Rate:	1.0 Hour

- For proper mounting alignment, set the ridge on the backside of the bracket (Fig. 2A) onto the top edge of the lower extrusion (Fig. 6A).
- Install bolts (Fig. 6B), 5/16" washers (Fig. 6C), 3/8" fender washers (Fig. 6D) and barrel nuts (Fig. 6E) in each of the previously drilled top mounting holes (Fig. 3A).

Fig. 6

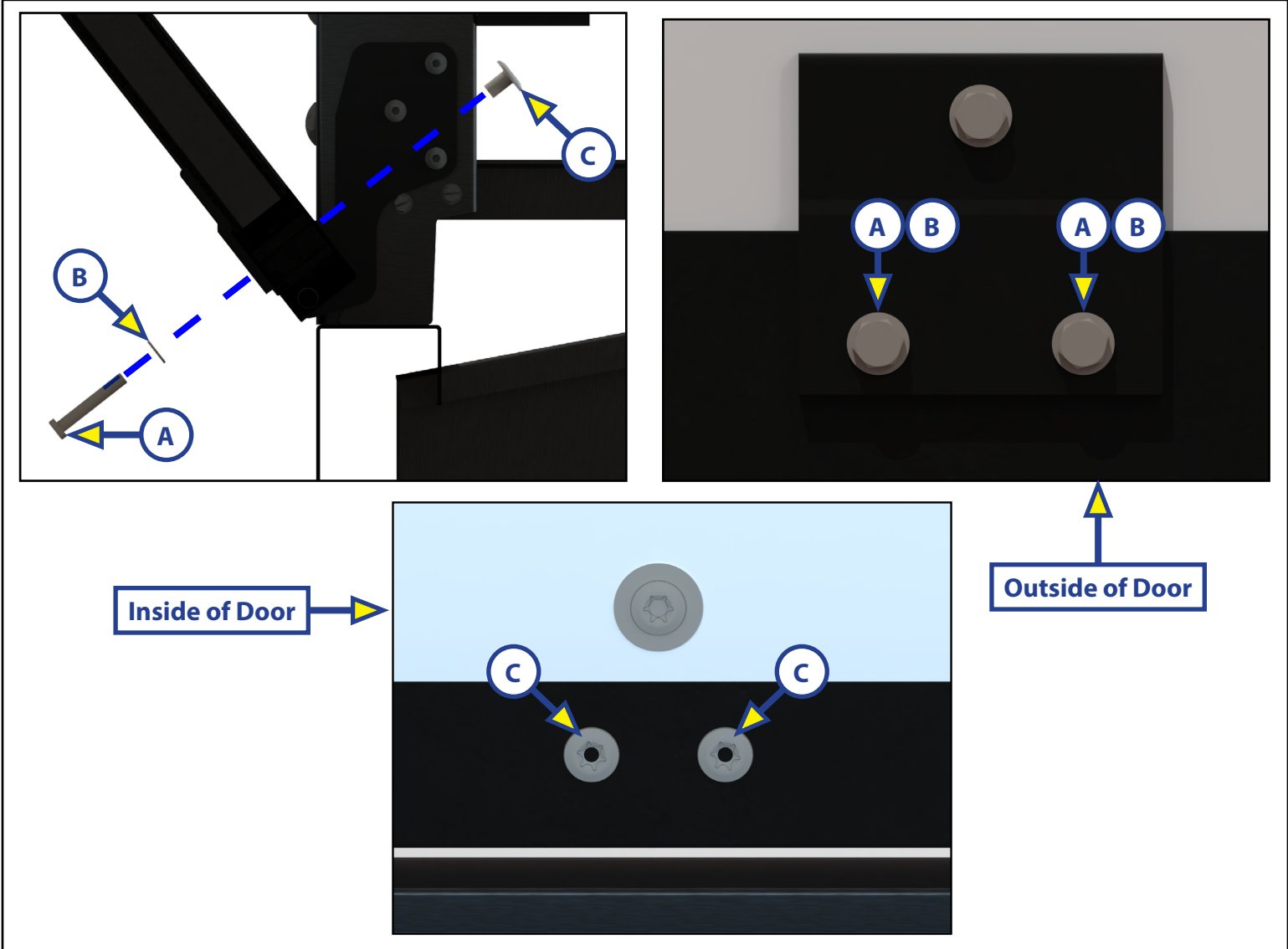


# 3000 SERIES WEATHERPROOF HIDDEN HINGE RAMP DOOR REINFORCEMENT

Recall Number:	26E-002		
Product:	3000 Series Weatherproof Hidden Hinge Ramp Doors		
Date:	02/10/2026	Labor Rate:	1.0 Hour

- A. Install bolts (Fig. 7A), 5/16" washers (Fig. 7B) and barrel nuts (Fig. 7C) in each of the previously-drilled holes (step 5).
- B. Using a 1/2" socket or wrench and T55 star bit, torque each bolt to 48 in-lb.

**Fig. 7**



# 3000 SERIES WEATHERPROOF HIDDEN HINGE RAMP DOOR REINFORCEMENT

Recall Number:	26E-002		
Product:	3000 Series Weatherproof Hidden Hinge Ramp Doors		
Date:	02/10/2026	Labor Rate:	1.0 Hour

6. Cycle the ramp door open and close (Fig. 8A) a few times to ensure proper bracket installation and door functionality.

Fig. 8

