


RECALL 26V020 / 2026-013 REMEDY INSTRUCTIONS

 FOREST RIVER	Make(s): SEE BELOW Model(s): SEE BELOW Model Year(s): SEE BELOW	Repair Code: RC-070-09-00-004797 Allotted Time: .1.0 Inspection Code: N/A Allotted Time: N/A
	Concern: A design issue exists which may allow a 3000 series Hidden Hinge Door to experience a structural failure, particularly when additional dynamic or unanticipated forces are applied during loading or unloading.	Photo(s) Required: NO Prior Authorization Required: YES Part(s) Kit Number: SEE BELOW Part(s) Return: NO

Turn off LP Gas at LPG Tank(s). Disconnect the vehicles' battery Positive and Negative, disconnect any House battery(s) Positive and Negative, if equipped with a generator ensure it is off and lastly, ensure the vehicle is disconnected from shore power. Block any tires/wheels to prevent the vehicle from rolling. Failure to do so may result in electrocution, fire or other personal injury, property damage and/or death.

MAKE/MODELS:

CERTAIN 2025 CEDAR CREEK CRT40RDE

CERTAIN 2024-2026 COACHMEN CHAPARRAL CHF389DEK

CERTAIN 2022-2026 COACHMEN ADRENALINE ANT27KB, ANT29SS AND 2024-2026 ANT30GS

CERTAIN 2023-2025 RIVERSTONE RSF4513DST, 2023-2024 RSF4514BATH AND 2023 RSF45BATH

CERTAIN 2025-2026 SHASTA PHOENIX SPF389DEK

CERTAIN 2024-2026 EAST TO WEST TAKODA TKF350TH, TKF400TH, 2025-2026 TKF399TH AND 2026 TKF379TH

CERTAIN 2023-2026 WPT27KB, WPT29SS AND 2024-2026 WPT30GS

WHAT IS THE PART NUMBER OF THE REMEDY KIT?

PARTS KITS SHOULD BE ORDERED FROM LIPPERT:

PHONE: 432-LIPPERT (432-547-7378) or by email at customerservice@lci1.com

- P/N – 2026051115 - HIDDEN HINGE CORE REINFORCEMENT KIT; MILL (a silver coated frame bracket is included in this kit)

OR

- P/N – 2026051116 - HIDDEN HINGE CORE REINFORCEMENT KIT; BLACK (a black coated frame bracket is included in this kit)

SEE THE ATTACHED INSPECTION AND REMEDY INSTRUCTIONS

3000 SERIES WEATHERPROOF HIDDEN HINGE RAMP DOOR REINFORCEMENT

Recall Number:	26E-002		
Product:	3000 Series Weatherproof Hidden Hinge Ramp Doors		
Date:	02/10/2026	Labor Rate:	1.0 Hour

Purpose

This document refers to adding reinforcement to the hinge area of the 3000 Series Weatherproof Hidden Hinge Ramp Door.

Safety

This document provides general instructions. Many variables can change the circumstances of any procedure, i.e. the degree of difficulty involved in the service operation and the ability level of the individual performing the operation. This document cannot begin to plot out procedures for every possibility, but will provide the general instructions for effectively installing, removing or servicing the system. In the event the skill level required is too advanced or the procedure too difficult, a certified technician should be consulted before performing the necessary operation. Failure to correctly install, remove or service the system may result in voiding the warranty, inflicting injury or even death.

WARNING

The "WARNING" symbol above is a sign that a procedure has a safety risk involved and may cause death, serious personal injury, severe product and/or property damage if not performed safely and within the parameters set forth in this document.

CAUTION

The "CAUTION" symbol above is a sign that a procedure has a safety risk involved and may cause personal injury, product and/or property damage if not performed safely and within the parameters set forth in this document.

CAUTION

Moving parts can pinch, cut or crush. Use care and keep clear.

Resources Required

- Two people, depending on the task
- Tape measure
- 13/32" and assorted smaller drill bits
- Cordless or electric drill
- 1/2" wrench or socket
- T55 star bit
- All-weather silicone
- Torque wrench rated up to 48 in-lb
- Permanent marker or scribe

3000 SERIES WEATHERPROOF HIDDEN HINGE RAMP DOOR REINFORCEMENT

Recall Number:	26E-002		
Product:	3000 Series Weatherproof Hidden Hinge Ramp Doors		
Date:	02/10/2026	Labor Rate:	1.0 Hour

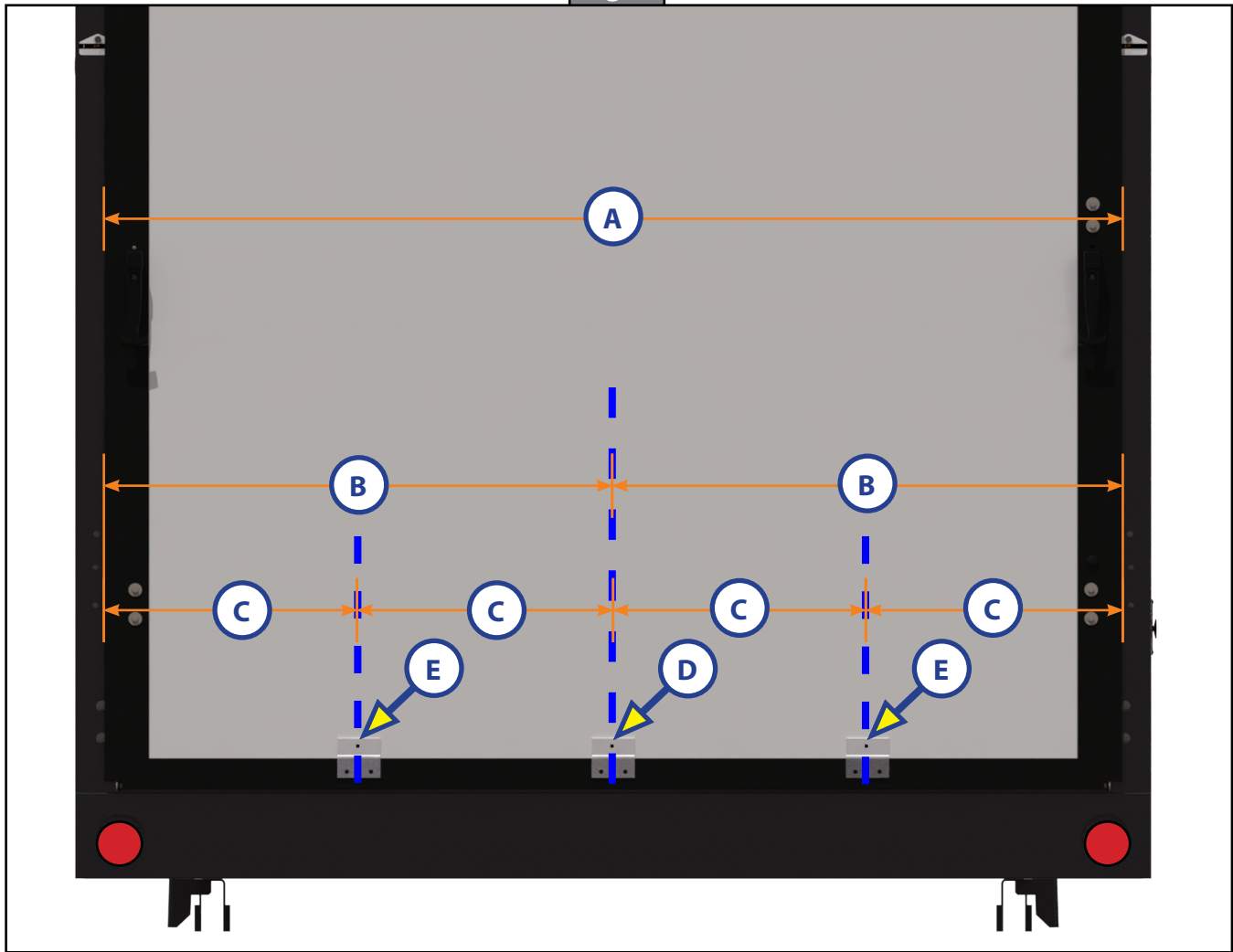
Preparation

1. Use a tape measure to find the width of the door (Fig. 1A).
 - A. Divide the door's width by two (2) then use that dimension to measure from the door edges inward and mark the centerline location (Fig. 1B).

NOTE: Measured centerline of door (Fig. 1B) is the placement for first bracket (Fig.1D).

- B. Divide each figure 1B measurement by two (2) then use that dimension (Fig. 1C) to measure from the door edges inward, or the centerline (Fig. 1D) outward, and mark the locations of the other two (2) brackets (Fig. 1E).

Fig. 1



3000 SERIES WEATHERPROOF HIDDEN HINGE RAMP DOOR REINFORCEMENT

Recall Number:	26E-002		
Product:	3000 Series Weatherproof Hidden Hinge Ramp Doors		
Date:	02/10/2026	Labor Rate:	1.0 Hour

Instructions

1. Using one of the brackets as a drill guide, set the ridge on the backside of the bracket (Fig. 2A) onto the top edge of the lower extrusion for proper alignment. Then align the center of the bracket with its corresponding centerline (Fig. 3).
 - A. Mark the top hole (Fig. 3A) of the bracket at each centerline location.
 - B. At all three hole locations on each bracket, use a small drill bit to drill pilot holes through the door's core and extruded frame (Fig. 3).
 - C. Set the bracket aside then, using a 13/32" drill bit, drill through holes at each pilot hole location.

Fig. 2

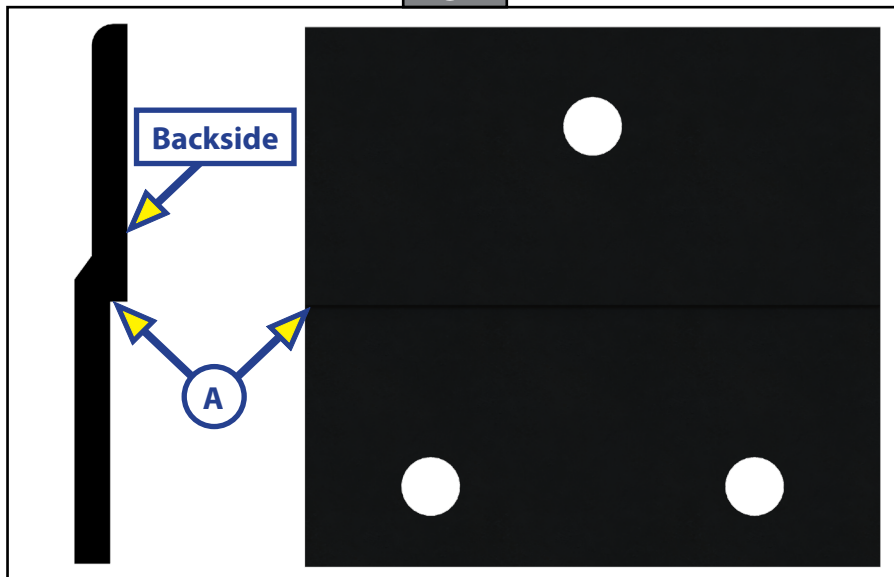
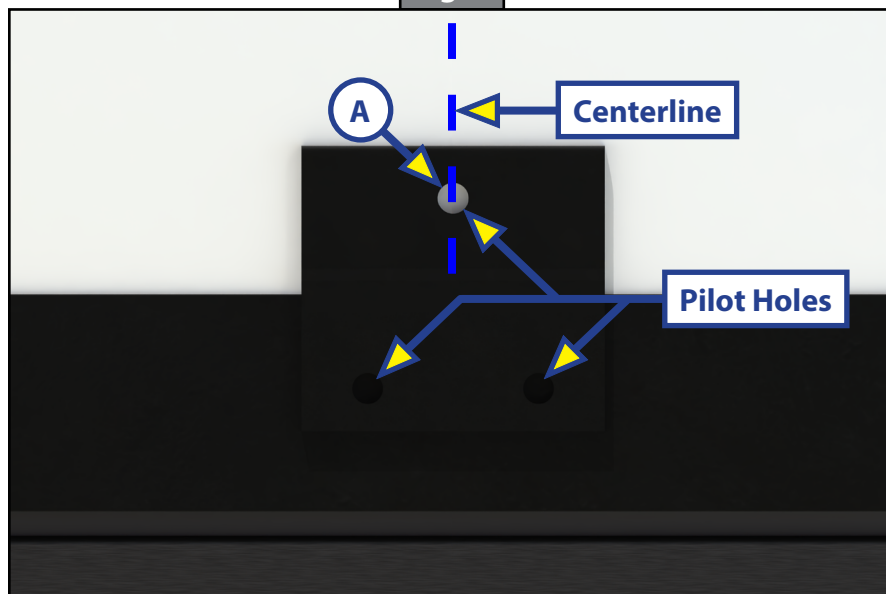


Fig. 3

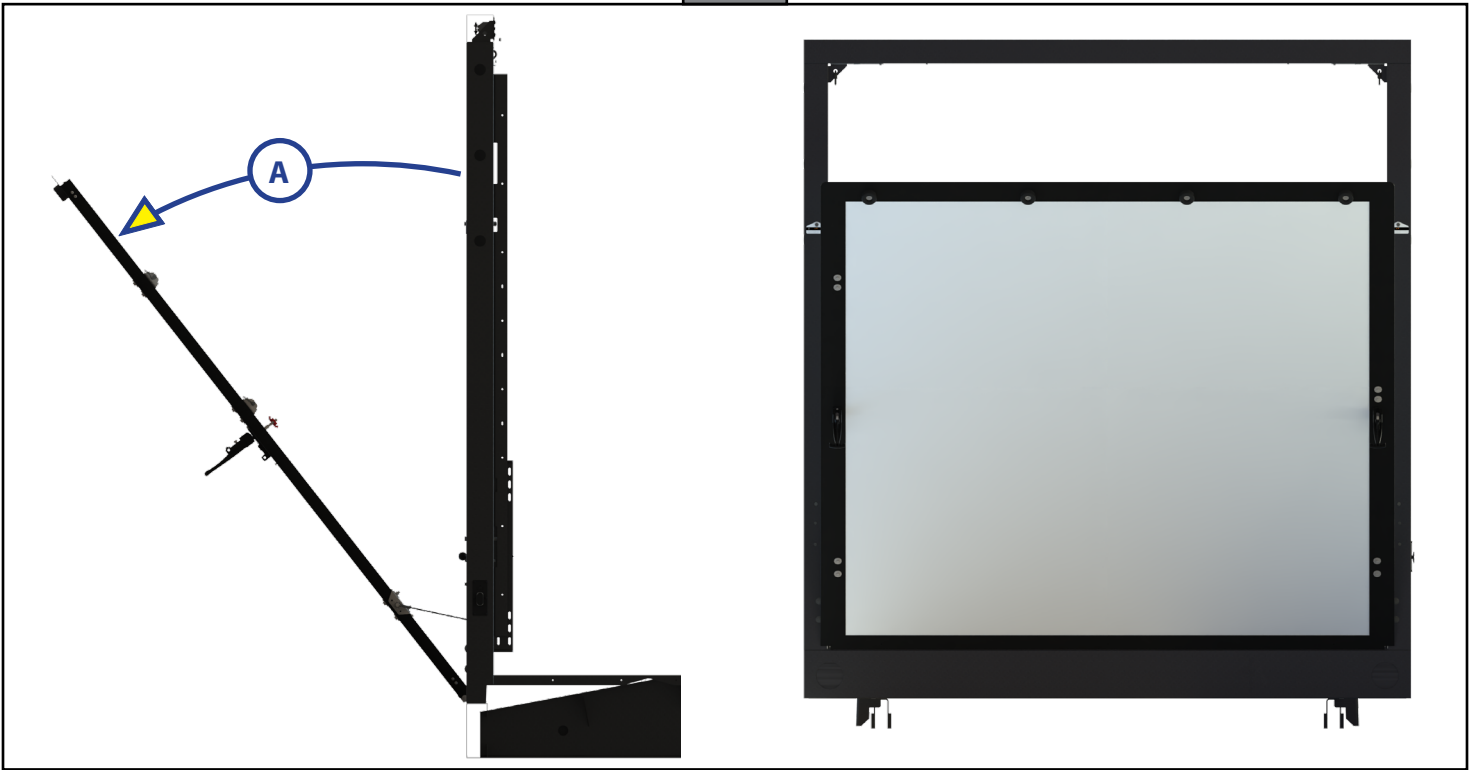


3000 SERIES WEATHERPROOF HIDDEN HINGE RAMP DOOR REINFORCEMENT

Recall Number:	26E-002		
Product:	3000 Series Weatherproof Hidden Hinge Ramp Doors		
Date:	02/10/2026	Labor Rate:	1.0 Hour

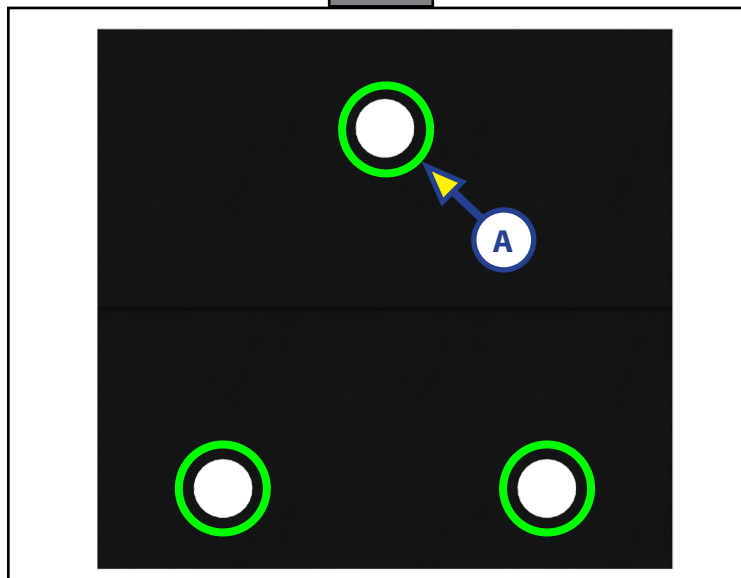
2. Open the ramp door approximately two feet to make bracket installation easier (Fig. 4A).

Fig. 4



3. On the backside of each bracket, apply a thin layer of all-weather clear silicone sealant (green circles) around all three mounting holes (Fig. 5A).

Fig. 5

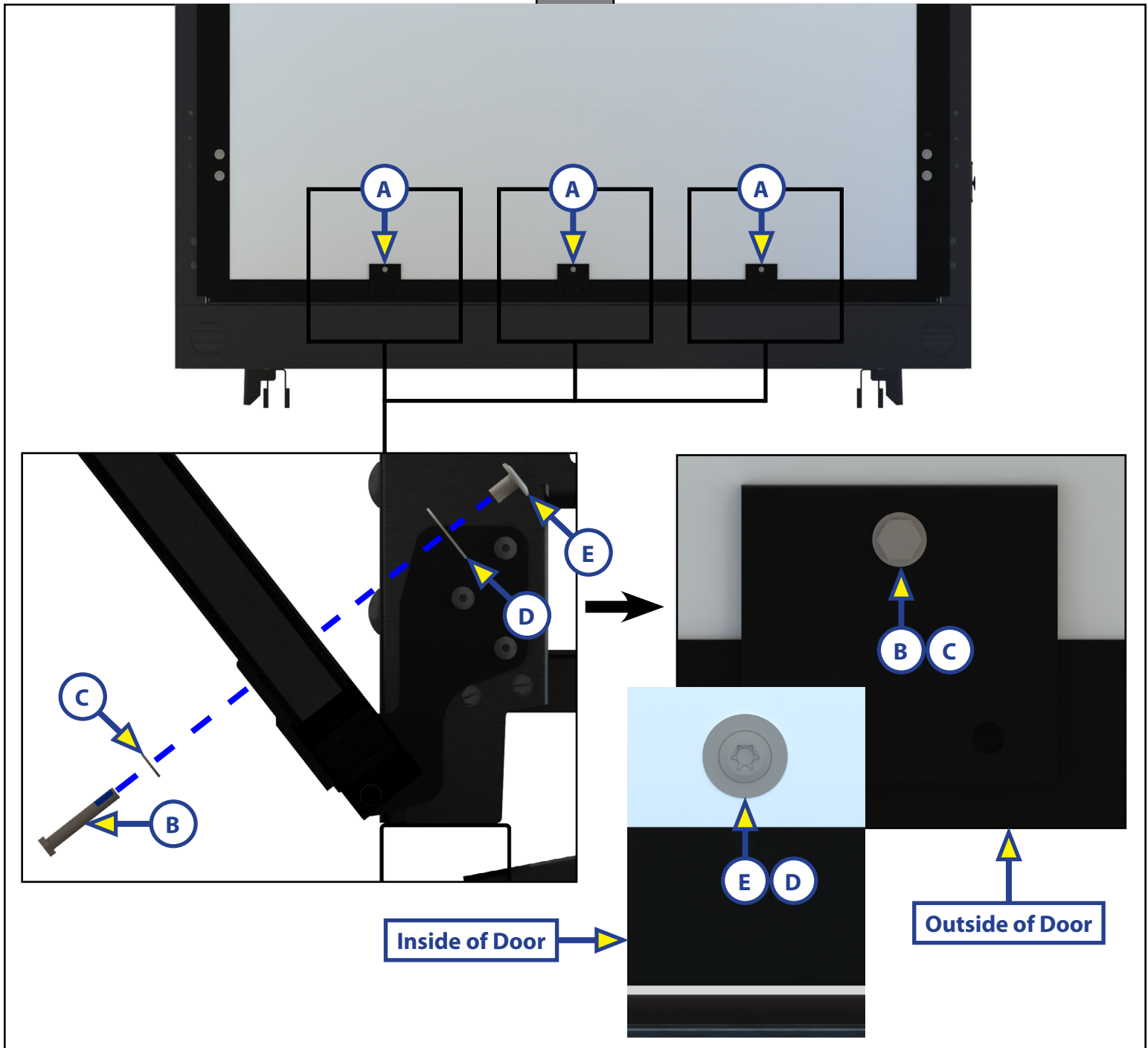


3000 SERIES WEATHERPROOF HIDDEN HINGE RAMP DOOR REINFORCEMENT

Recall Number:	26E-002		
Product:	3000 Series Weatherproof Hidden Hinge Ramp Doors		
Date:	02/10/2026	Labor Rate:	1.0 Hour

- For proper mounting alignment, set the ridge on the backside of the bracket (Fig. 2A) onto the top edge of the lower extrusion (Fig. 6A).
- Install bolts (Fig. 6B), 5/16" washers (Fig. 6C), 3/8" fender washers (Fig. 6D) and barrel nuts (Fig. 6E) in each of the previously drilled top mounting holes (Fig. 3A).

Fig. 6

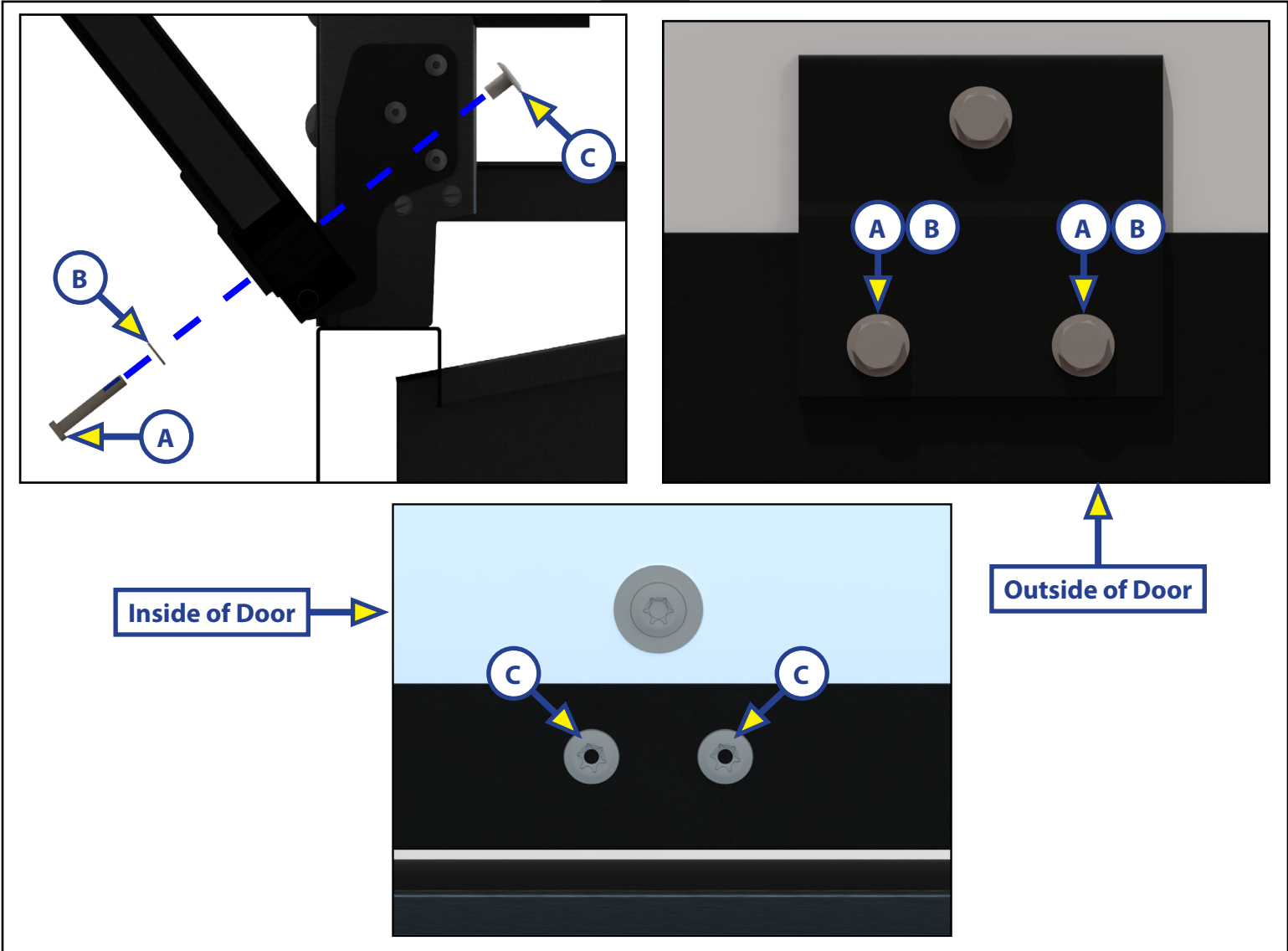


3000 SERIES WEATHERPROOF HIDDEN HINGE RAMP DOOR REINFORCEMENT

Recall Number:	26E-002		
Product:	3000 Series Weatherproof Hidden Hinge Ramp Doors		
Date:	02/10/2026	Labor Rate:	1.0 Hour

- A. Install bolts (Fig. 7A), 5/16" washers (Fig. 7B) and barrel nuts (Fig. 7C) in each of the previously-drilled holes (step 5).
- B. Using a 1/2" socket or wrench and T55 star bit, torque each bolt to 48 in-lb.

Fig. 7



3000 SERIES WEATHERPROOF HIDDEN HINGE RAMP DOOR REINFORCEMENT

Recall Number:	26E-002		
Product:	3000 Series Weatherproof Hidden Hinge Ramp Doors		
Date:	02/10/2026	Labor Rate:	1.0 Hour

6. Cycle the ramp door open and close (Fig. 8A) a few times to ensure proper bracket installation and door functionality.

Fig. 8

