



Technical Service Bulletin

GROUP	NUMBER
RECALL	26-01-008G-1
DATE	MODEL(S)
MARCH 2026	SEE BELOW

SUBJECT: CCIC27 SOFTWARE UPDATE
(RECALL 031G)

This TSB supersedes 26-01-008G to revise the 'Parts Information' with individual USB part numbers on page 2, add a note that an Over-the-Air (OTA) option is available for the guest under the 'Parts Information' table, and add a notice text box regarding battery state of charge and revise service instructions on steps 1 & 8.

*** IMPORTANT**

Vehicle repairs related to safety recalls are critically important and must be performed properly in accordance with TSB procedures. Review this bulletin in its entirety prior to beginning any repair work.

As required by federal law, retailers must not deliver new vehicles for sale or for lease to guests until all open recalls have been performed. Retailers must also perform all open recalls on used vehicles, demo, and rental vehicles prior to placing them into guest use and whenever an affected vehicle is in the shop for any maintenance or repair.

Access the "Vehicle Information" screen via WebDCS to identify open recalls.

Description: Certain G80 (RG3), G80 Electrified (RG3 EV), GV60 (JW1 EV), GV70 (JK1/JK1A), GV70 Electrified (JK1A EV), and GV80 (JX1) vehicles may exhibit temporarily blank instrument panel ("IP") cluster and Audio/Video/Navigation ("AVN") display due to a software logic issue involving HD radio memory causing the screen to intermittently reboot. An inoperative IP cluster image could mask essential gauges, such as the speedometer, fuel gauge, and certain on-screen notifications, increasing the risk of a crash. This bulletin provides instructions to perform a software update for the AVN and IP module.

Applicable Vehicles (Certain):

Model Year	Model	Production Dates
2025 – 2026	G80 (RG3)	06/03/2024 – 11/24/2025
	GV80 (JX1)	03/05/2024 – 11/27/2025
2026	G80 Electrified (RG3 EV)	01/21/2025 – 01/24/2025
	GV60 (JW1 EV)	07/09/2025 – 08/25/2025
	GV70 (JK1)	02/18/2025 – 11/29/2025
	GV70 (JK1A)	01/30/2025 – 12/10/2025
	GV70 Electrified (JK1A EV)	04/08/2025 – 06/09/2025

NOTICE

To avoid any potential damage to Genesis EVs, Genesis EV repairs can only be performed by EV certified Genesis retailers.

Parts Information:

Model	Part Name	Part Number	Figure	Remarks
GV70 (JK1/JK1A)	RECALL 031G GV70 25MY USB STICK	NP001- 031GJK1		JK1 PE-251105
GV60 (JW1)	RECALL 031G GV60 26MY USB STICK	NP001- 031GJW		JW FL-251113
25MY GV80 (JX1)	RECALL 031G GV80 25MY USB STICK	NP001- 031GJX		JX1 PE(~25MY)- 251105
26MY GV80 (JX1)	RECALL 031G GV80 26MY USB STICK	NP001- 031GJX26		JX1 PE(26MY)- 251105
25MY G80 (RG3)	RECALL 031G G80 2025MY USB STICK	NP001- 031GRG		RG3 PE(~25MY)- 251105
26MY G80 (RG3)	RECALL 031G G80 2026MY USB STICK	NP001- 031GRG26		RG3 PE(26MY)- 251105
G80 Electrified (RG3 EV)	RECALL 031G G80 ELECTRIFIED 26MY US	NP001- 031GRGEV		RG3 PE EV- 251105
GV70 Electrified (JK1A EV)	RECALL 031G GV70 ELECTRIFIED 2026MY	NP001- 031GJKEV		JK1 PE EV-251113

NOTE 1: The software update is subject to an OTA (Over-the-Air) option and may be completed by guests with active Genesis Connected Service subscriptions.

NOTE 2: USB Kits (P/N: **RC031-GUDSBK-T**) are no longer available for ordering. Individual USB stick part numbers will be on manual allocation (subject to change) and may be ordered via the MPA Parts Helpdesk as needed. Additional orders are subject to GMA review.

Warranty Information:

Model	Op. Code	Operation	Op. Time	Causal Part	Nature Code	Cause Code
G80 (RG3) G80 Electrified (RG3 EV)	61D00710	CCIC27 Software Verification (No Update Required)	0.2 M/H	NTF00-00000	M13	ZZ3
GV60 (JW1 EV)						
GV70 (JK1/JK1A) GV70 Electrified (JK1A EV)	61D007R0	CCIC27 Software Verification & Update	0.3 M/H	NTF00-00000	M13	ZZ3
GV80 (JX1)						

NOTE 1: Submit claim on Claim Entry Screen as “Campaign” type.

NOTE 2: If any part(s) not subject to this TSB are found in need of replacement while performing the repair procedure, and the affected part(s) are still under warranty, the dealer may submit a separate claim using the same repair order. If the part(s) not subject to this TSB are out of warranty coverage, the dealer has the option to submit a PA Request for goodwill consideration on a case-by-case basis.

NOTE 3: This TSB includes repair validation photos. Op times include VIN, mileage, and repair validation photo(s) as outlined in the Digital Documentation Policy.

AVN Software Version Information:

Model	System	AVN Software Version	
		Current	Latest
GV70 (JK1/JK1A)	AVN (ccIC)	ccIC2.001.003. 250822 or before	ccIC2.001.003. 251105
GV60 (JW1)		ccIC2.001.001. 250711 or before	ccIC2.001.001. 251113
25MY GV80 (JX1)		(25MY): ccIC2.001.004. 250822 Or before	(25MY): ccIC2.001.004. 251105
26MY GV80 (JX1)		(26MY): ccIC2.001.005. 250821 or before	(26MY): ccIC2.001.005. 251105
25MY G80 (RG3)		(25MY): ccIC2.001.004. 250822 or before	(25MY): ccIC2.001.004. 251105
26MY G80 (RG3)		(26MY): ccIC2.001.005. 250821	(26MY): ccIC2.001.005. 251105
G80 Electrified (RG3 EV)		ccIC2.001.003. 250822 or before	ccIC2.001.003. 251105
GV70 Electrified (JK1A EV)		ccIC2.001.001. 250524 or before	ccIC2.001.001. 251113

Service Procedure:

DIGITAL DOCUMENTATION

This TSB includes repair validation photos. Refer to the latest Warranty Digital Documentation Policy for requirements.

NOTICE

Ensure the vehicle's battery state of charge (SOC) is **above 90%** and the tablet's battery charge is **above 30%** before performing a software update to avoid failure.

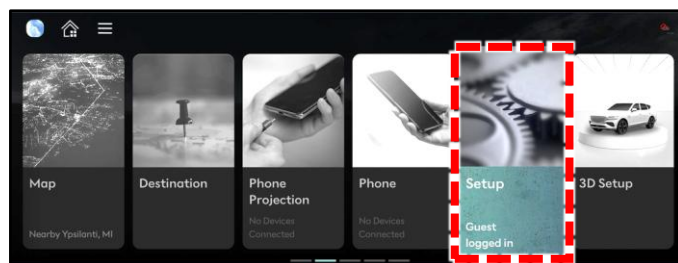
CCIC27 Software Verification and Update

1. **Start the engine** (ICE vehicles) or place the vehicle in **Ready** mode (EV vehicles) by pushing the **Start Stop Button (SSB)**.

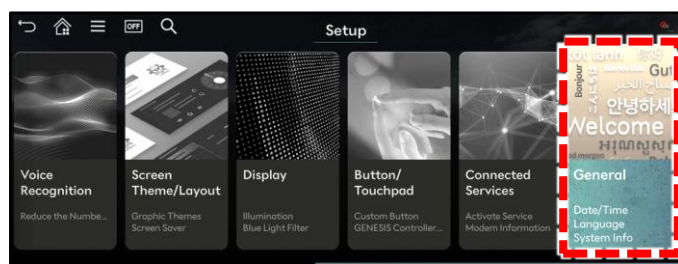
Ensure that headlights are turned **ON**.



2. Select **Setup**.

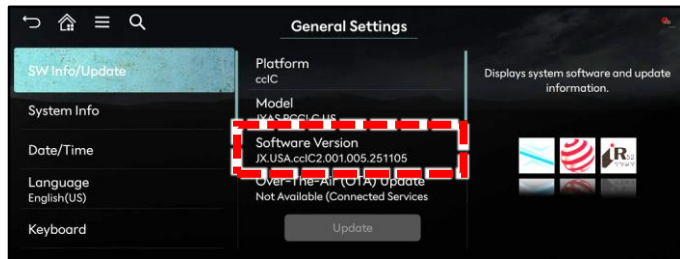


3. Select **General**.



4. Verify the software version:

Model	Current Software Version
GV70 (JK1/JK1A)	ccIC2.001.003. 250822 or before
GV60 (JW1)	ccIC2.001.001. 250711 or before
GV80 (JX1)	(25MY): ccIC2.001.004. 250822 or before
	(26MY): ccIC2.001.005. 250821 or before
G80 (RG3)	(25MY): ccIC2.001.004. 250822 or before
	(26MY): ccIC2.001.005. 250821
G80 Electrified (RG3 EV)	ccIC2.001.003. 250822 or before
GV70 Electrified (JK1A EV)	ccIC2.001.001. 250524 or before

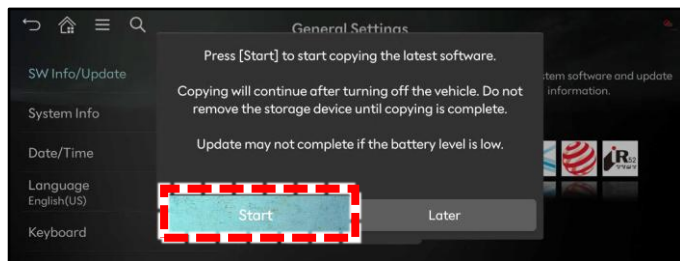


- If the software version is **251105** or later, do **NOT** proceed with this software update. Proceed to **step 11**. Submit claim with op. code **61D00710**.
- If the software version matches the current software version on table above, then proceed to **step 5**.

5. Insert the USB drive into the slot then select **Start**.

i Information

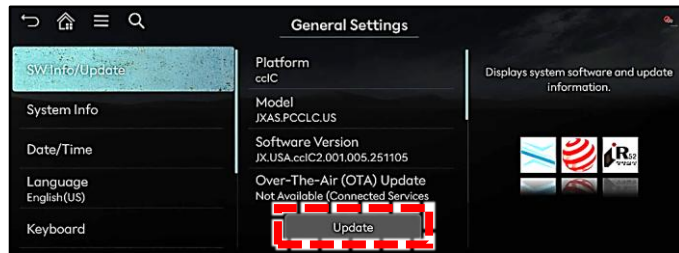
A pop-up menu will appear after the USB drive has been inserted.



- Select Update:
Select **Setup > General > SW Info/Update > General Settings>Update** to perform the software update.

i Information

Do **NOT** remove the USB drive or turn **OFF** the ignition during the update.

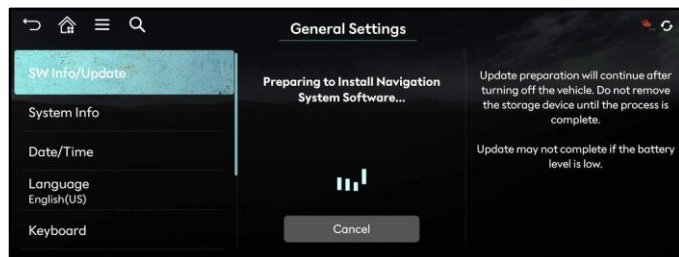


- Exit the vehicle. Buckle the driver's seatbelt to prevent the ignition from turning **OFF**.

Ensure that the driver's window is in down position.

i Information

The software update may take up to **58 minutes**.



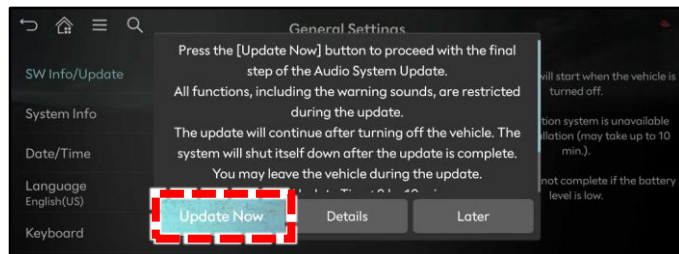
- Once the software update is complete re-enter the vehicle and close the driver door.

Press the **Start Stop Button (SSB)** to turn **OFF** the engine.

The update screen will be displayed.

i Information

Do **NOT** open the door. Opening the door will prevent the final pop-up menu to appear to complete the final software update.



Select **Update Now**.


i Information

After "Update Now" has been pressed, door can be opened. The final portion of the update will take about **5 minutes**.

- The software update is now complete.

10. After the system reboots, confirm the new software version by selecting:
 - **Setup > General > SW Info/Update > General Settings:**

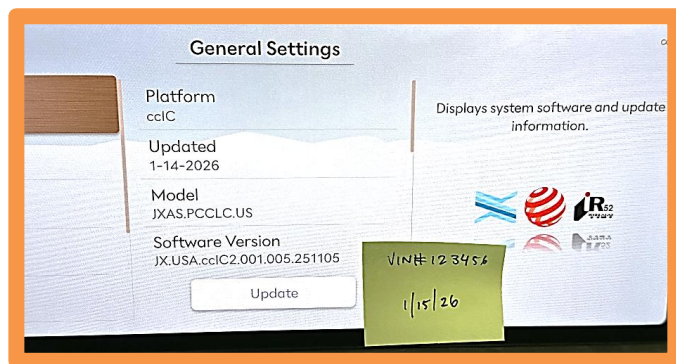
Model	Latest Software Version
GV70 (JK1/JK1A)	ccIC2.001.003. 251105
GV60 (JW1)	ccIC2.001.001. 251113
GV80 (JX1)	(25MY): ccIC2.001.004. 251105
	(26MY): ccIC2.001.005. 251105
G80 (RG3)	(25MY): ccIC2.001.004. 251105
	(26MY): ccIC2.001.005. 251105
G80 Electrified (RG3 EV)	ccIC2.001.003. 251105
GV70 Electrified (JK1A EV)	ccIC2.001.001. 251113

11. **DIGITAL DOCUMENTATION** 

Using the STUI camera function, take a photo of the latest software version.

Upload the photo to STUI.

NOTE: If the STUI camera function is **NOT** used, write the last 6 digits of the VIN and date of repair on a piece of paper to include in the photo.



12. The service procedure is now complete.