



## Recall Information Bulletin

**No:** C10136 **Issued:** 3/25/2026

**NHTSA No:** 26V126

**Transport Canada No:** 2026-132

**SUBJECT:**

Safety Recall C10136 – HV System 0% State of Charge While Stationary

**MODELS:**

FEC7K (E16L/E16M), FEC9K (E18L/E18M), FECXK (E18)

**VEHICLES INVOLVED:**

Certain 2024-2025 model year FEC7K, FEC9K and FECXK trucks.

A list of vehicles your Dealership has sold that require this Recall can be found on the “Open Campaigns” list supplied by MFTA. Some individual vehicles described above may not need the Recall as the repairs may have already been performed. Always check the VIN inquiry on Falcon to verify that the VIN requires this Safety Recall.

**Important note: It is a violation of Federal law for a dealer to deliver a new or used motor vehicle covered by this Recall Information Bulletin, under a sale or lease, until the Safety Recall has been completed.**

**OWNER NOTIFICATION:**

Owners of affected vehicles will be notified by mail.

**CONDITION:**

Mitsubishi Fuso Truck of America, Inc. has decided that a defect, which relates to motor vehicle safety, exists in the vehicle control unit (VCU) on certain 2024 and 2025 model year FEC7K (E16L/E16M), FEC9K (E18L/E18M) and FECXK (E18) RIZON trucks. While the vehicle is stationery, the State of Charge (SoC) incorrectly displays 0%, even when the vehicle is charged. The cause is an Electrical Control Unit transmitting error frames to the Vehicle Control Unit resulting in an error where the SoC is incorrectly displayed. In the worst case, the vehicle will remain at a standstill and cannot be driven, increasing the risk of a crash. The error can be temporarily resolved by performing an Ignition Switch On/Off cycle, which recovers the vehicle and results in correct SoC display.

**MODIFICATION:**

The Battery Management System (BMS) and DC-Box (DCB) software will be reprogrammed with software correcting the direct charging box sequential counter error.

**PARTS PROCUREMENT:**

N/A

**RECALL CLAIM SUBMITTAL:**

Upon completion of a recall or field fix repair, a warranty claim must be submitted to Rizon US through the DealerPro system or manually through our interim process. It is important to use the appropriate claim type, e.g. Recall or Field Fix and Recall/Field Fix number. The claim will be processed by Rizon and reimbursement will be completed using the reimbursement schedule used for your standard warranty claims. If you need support submitting a claim or have general claim questions, please contact Rizon US Warranty Department at [rizonwarranty@rizontruck.us](mailto:rizonwarranty@rizontruck.us).

Campaign Reimbursement					
Campaign Number	Models	Allowances		Labor Description	Repair Parts
C1013610	FEC7K, FEC9K, FECXK	Labor Time	0.4 hour	Inspection only	N/A
C1013620	FEC7K, FEC9K, FECXK	Labor Time	2.1 hours	Reprogram BMS and DCB software – Size S, 1 Battery	N/A
C1013630	FEC7K, FEC9K, FECXK	Labor Time	3.1 hours	Reprogram BMS and DCB software – Size M, 2 Batteries	N/A
C1013640	FEC7K, FEC9K, FECXK	Labor Time	4.1 hours	Reprogram BMS and DCB software – Size L, 3 Batteries	N/A
C1013650	FEC7K, FEC9K, FECXK	Labor Time	1.1 hours	Reprogram DCB software Only	N/A

**REPAIR PROCEDURE:**

1. Park the vehicle on a flat, level surface, turn off the engine and chock the wheels.

**CAUTION!**

**Do not remove the wheel chocks until all modification work has been completed.**

2. Reprogram the BMS and/or DCB using instructions found in the Modification Procedure on the next page.

## MODIFICATION PROCEDURE

### Notes:

- Ensure that XENTRY software version "**DTD12/2023 with AddOn 30279**" software version or newer is 1/8 installed.
- Check for any diagnosis trouble codes (DTC) before reprogramming the VCU software. Any DTCs must be remedied before reprogramming.
- Confirm a secure connection between the XENTRY interface, the PC and the vehicle.
- While the software is being rewritten, the headlights and taillights will turn on and the 12V vehicle battery will lose power. Please be sure to supply power to the 12V vehicle battery during software reprogramming.

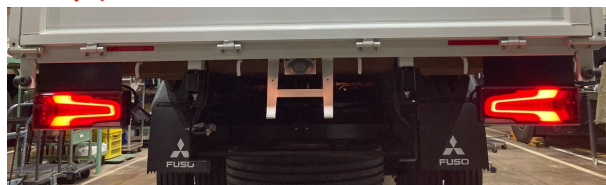
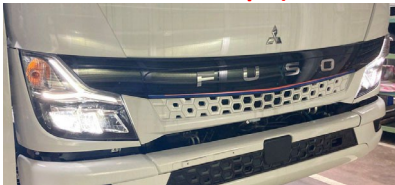
### VCU reprogramming

- The VCU software can be reprogrammed from the "Initial start-up" - "Reprogramming" screen of the corresponding ECU.
- Before reprogramming, download the corresponding vehicle's ECU file from the Field Rewrite Network (FRN)
- It is necessary to copy the downloaded FRN file to a USB drive and load it onto the XENTRY laptop.
- After reprogramming, upload the FRN file to the FRN server (refer to FD Instruction Manual F6-010: FRN).

---

### Important

**While rewriting the software, the following vehicle behavior will occur, so please proceed with caution. Exterior lamps (head lamps, tail lamps) will turn on.**



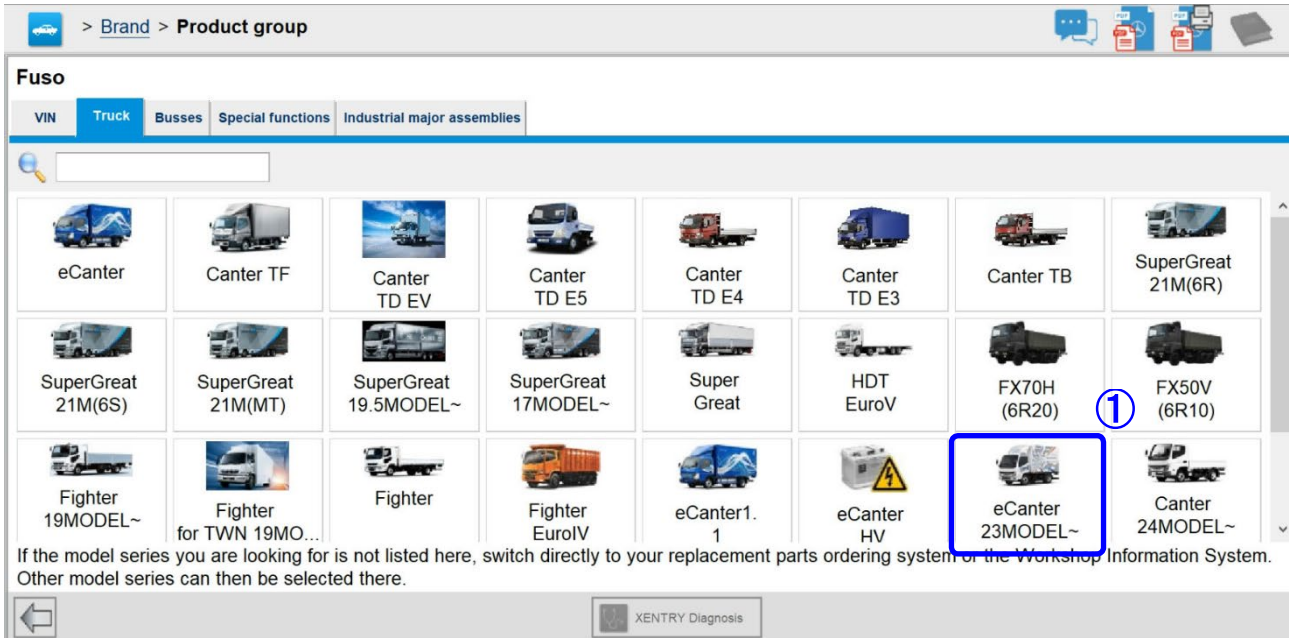
## VCU software updating procedure

- Download FRN file

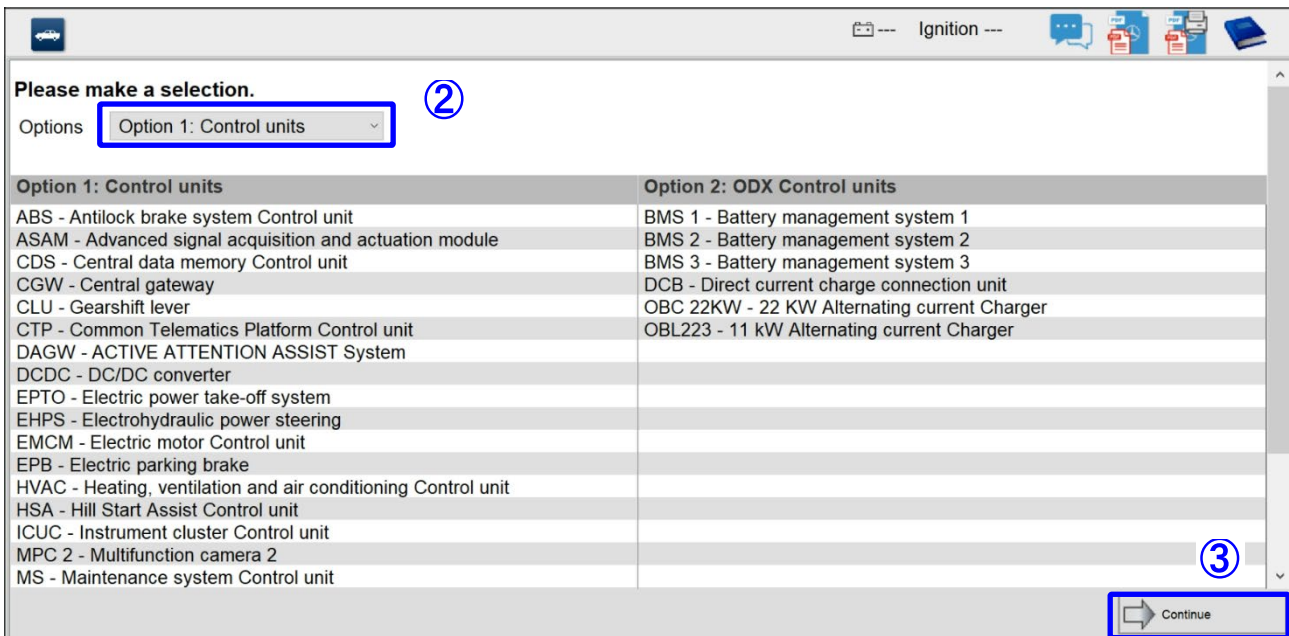
2/8

It is necessary to copy the downloaded FRN file to a USB memory and import it into the computer on which the FD is set up.

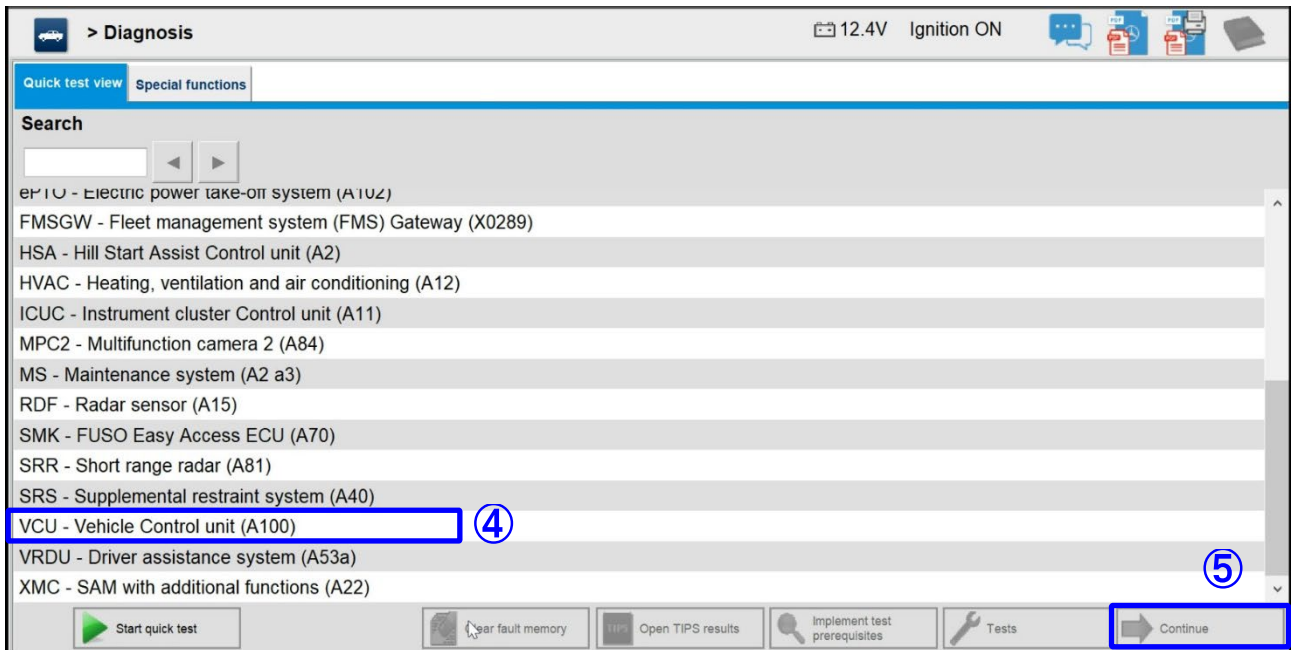
- Perform Reprogramming
- Turn on the vehicle's ignition.



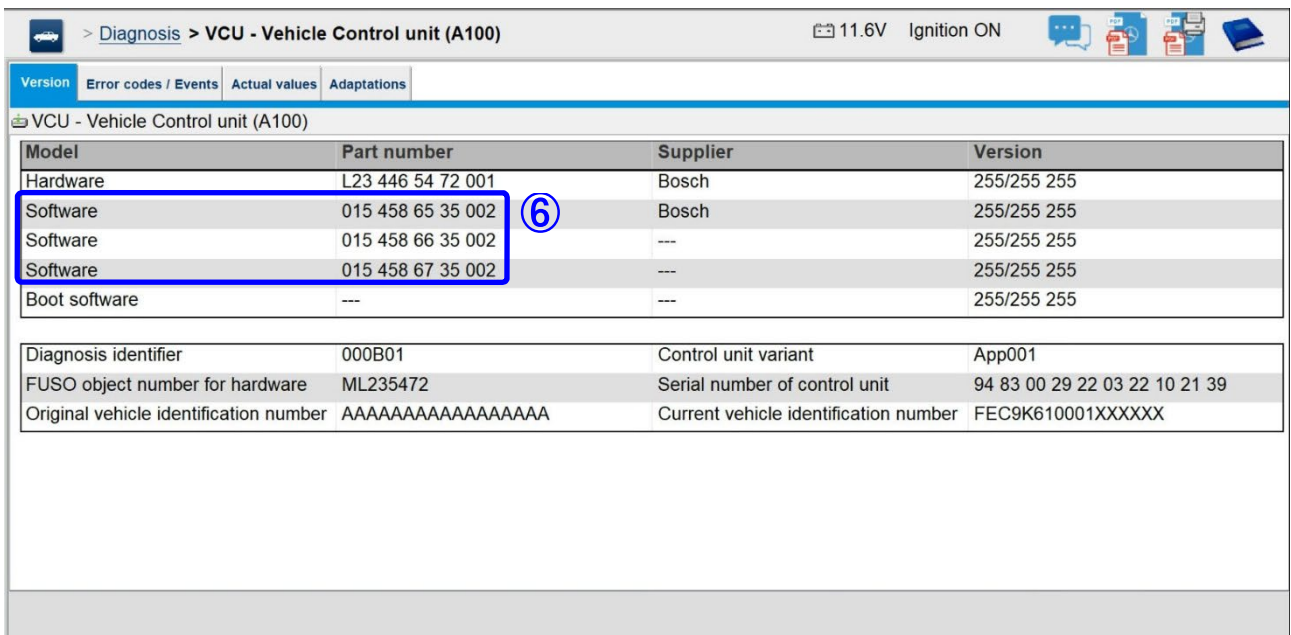
- Click "eCANTER 23MODEL".



- Click "Option 1: Control units".
- Click "Continue" button.



- ④ Click "VCU".
- ⑤ Click "Continue" button.



- ⑥ Confirm that the software part number is the one shown in Table1 below before being rewritten. If the software part number is the same after rewriting, rewriting is not necessary.

Table 1 Software part number before rewriting

	Software part number	
	Software part number before rewriting	Software part number after rewriting
CB	A 005 458 50 35_003 A 015 458 65 35_002	A 015 458 77 35_001
ASW	A 005 458 51 35_003 A 015 458 66 35_002	A 015 458 78 35_001
DS	A 005 458 52 35_003 A 015 458 67 35_002	A 015 458 79 35_001

> Diagnosis > VCU - Vehicle Control unit (A100) 12.4V Ignition ON

Version Error codes / Events Actual values Adaptations

**Selection**

- Parameterization
- Initial startup **7**
  - Control unit replacement
  - Reprogramming**
  - Reset of coding
- Data transfer

**Reprogramming**

Perform control unit programming.

The following operation steps must be performed before continuing:

- Switch off ignition.

You will be guided through the following steps:

- Programming of new control unit software
- Reset of coding
- Redocumentation

**8**

Continue

- 7** Click "Reprogramming".
- 8** Click "Continue" button.

> Diagnosis > VCU - Vehicle Control unit (A100) 12.5V Ignition ON

Version Error codes / Events Actual values Adaptations

**Selection**

- Parameterization
- Initial startup
  - Control unit replacement
  - Reprogramming**
  - Reset of coding
- Data transfer

**Reprogramming**

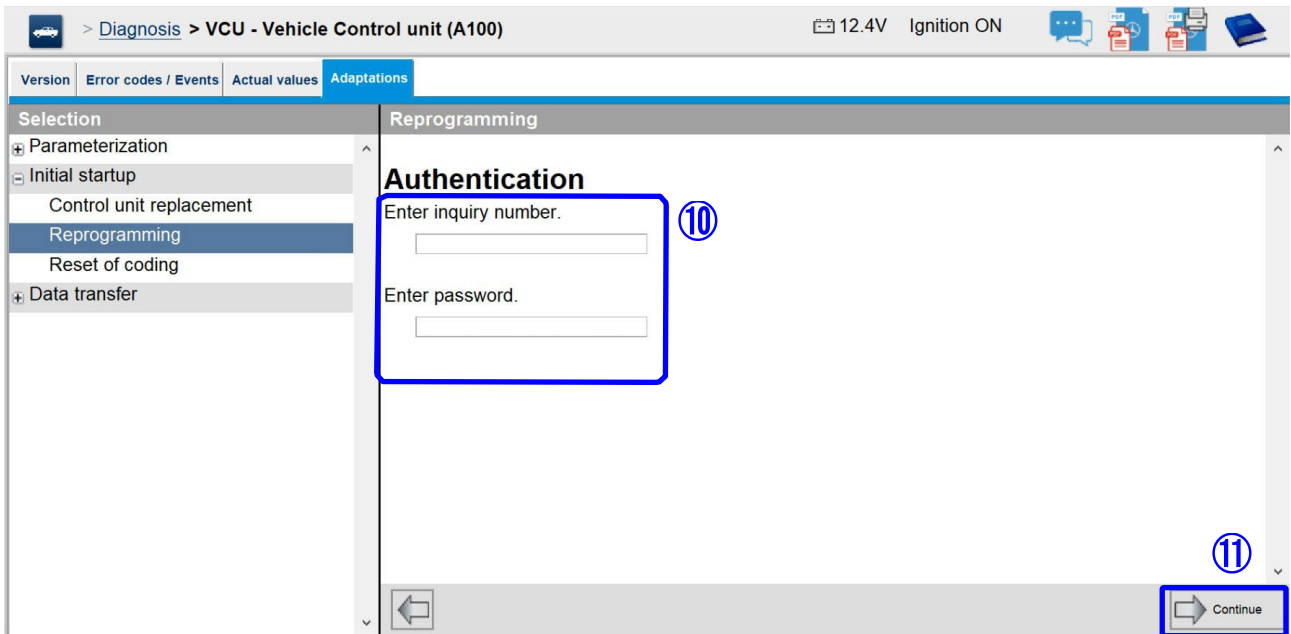
Switch on ignition.

Press button 'Continue' to continue.

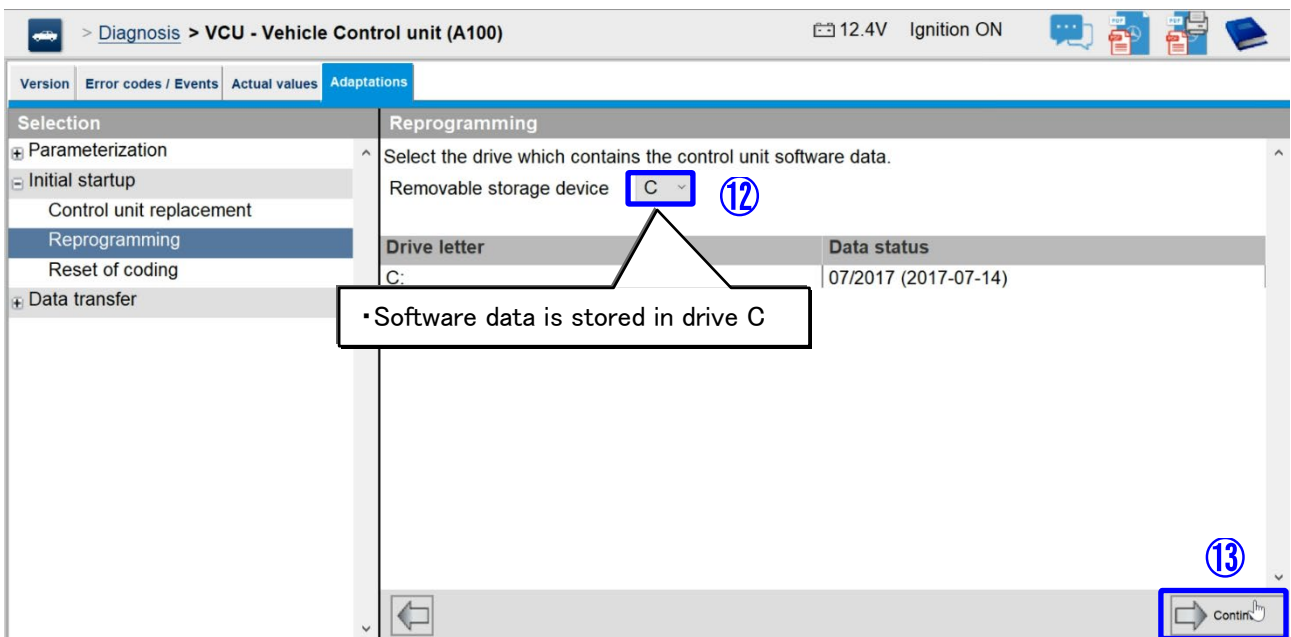
**9**

Continue

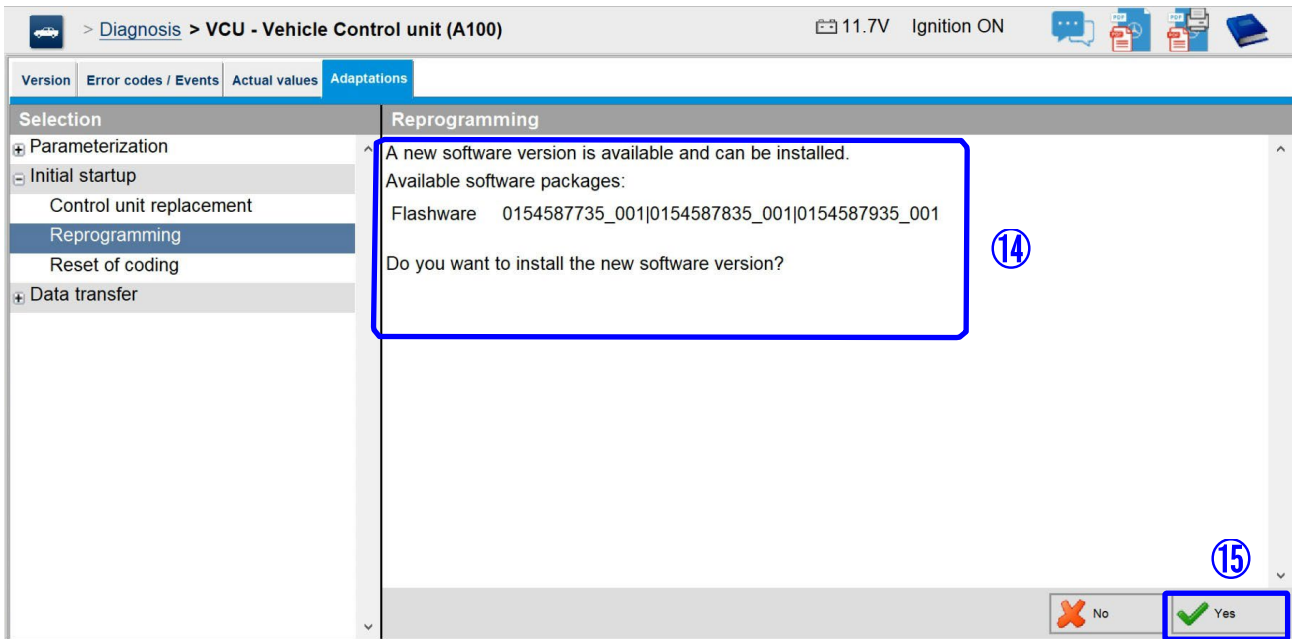
- 9** Click "Continue" button because the ignition is already switched on.



- ⑩ Enter the inquiry number and password from FRN server.  
(The alphabetical part of the inquiry number must be entered in capital letters.)
- ⑪ Click "Continue" button.



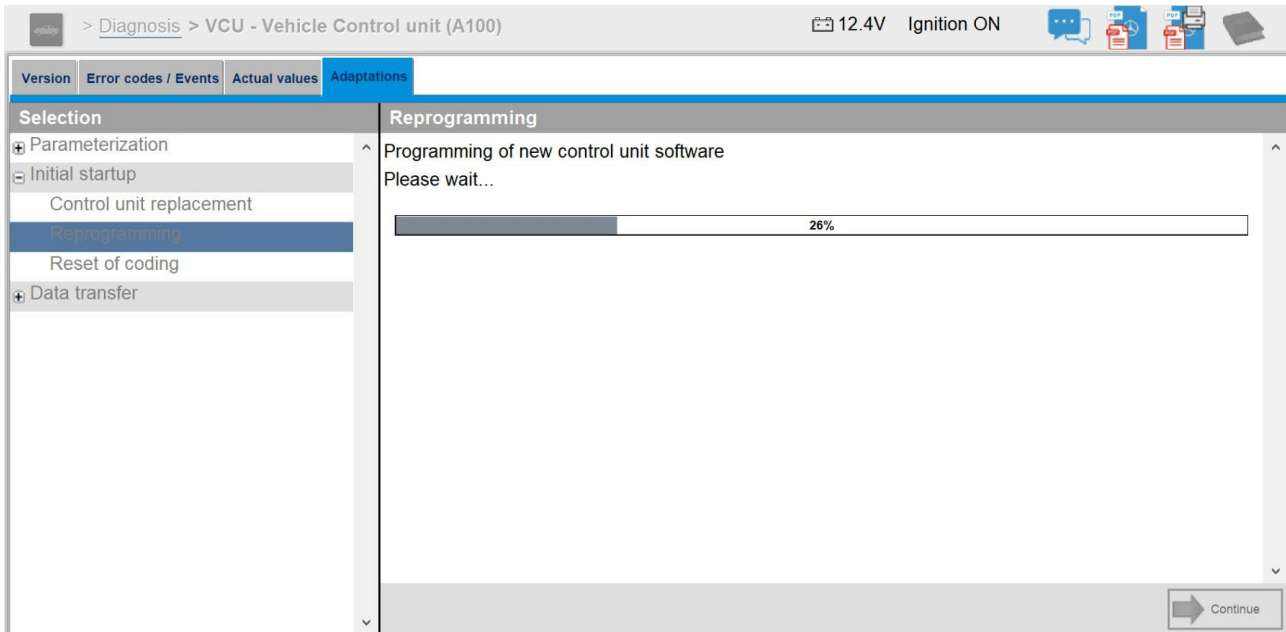
- ⑫ Select the drive where the software data is saving.
- ⑬ Click "Continue" button.



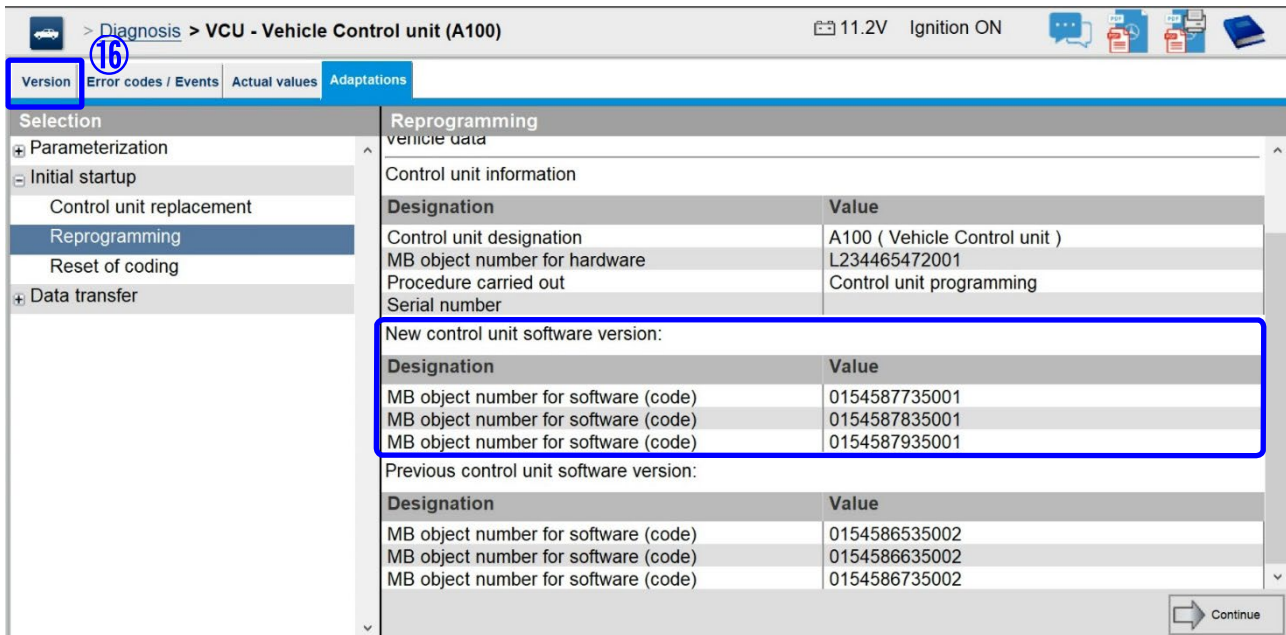
- ⑭ If installation software is available, it will be displayed as shown above.  
✖Confirm that the “After rewrite software part number” shown in the table2 below is displayed.
- ⑮ Click “Yes” button.

Table 2 Rewriting software part number

	Software part number	
	Software part number before rewriting	Software part number after rewriting
CB	A 005 458 50 35_003 A 015 458 65 35_002	A 015 458 77 35_001
ASW	A 005 458 51 35_003 A 015 458 66 35_002	A 015 458 78 35_001
DS	A 005 458 52 35_003 A 015 458 67 35_002	A 015 458 79 35_001



- The above screen will be displayed when re-writing starts.



- The above screen will be displayed when re-writing ends.

⑩ Select the tab "Version".

> Diagnosis > VCU - Vehicle Control unit (A100) 12.0V Ignition ON

Version Error codes / Events Actual values Adaptations

VCU - Vehicle Control unit (A100)

Model	Part number	Supplier	Version
Hardware	L23 446 54 72 001	Bosch	255/255 255
Software	015 458 65 35 002	Bosch	255/255 255
Software	015 458 66 35 002	---	255/255 255
Software	015 458 67 35 002	---	255/255 255
Boot software	---	---	255/255 255

Diagnosis identifier	000B01	Control unit variant	App001
FUSO object number for hardware	ML235472	Serial number of control unit	94 81 00 16 24 06 22 12 59 45
Original vehicle identification number	FECXKKJ00001XXXXX	Current vehicle identification number	FECXKKJ00001XXXXX

- After the reprogramming is completed, select the tab "Version" and check that the software number in the blue frame is the same as in the operation manual.

Table 3 Rewriting software part number

	Software part number	
	Software part number before rewriting	Software part number after rewriting
CB	A 005 458 50 35_003 A 015 458 65 35_002	A 015 458 77 35_001
ASW	A 005 458 51 35_003 A 015 458 66 35_002	A 015 458 78 35_001
DS	A 005 458 52 35_003 A 015 458 67 35_002	A 015 458 79 35_001

**Extract FRN file / Upload FRN file**

- Upload FRN file on FRN server.

## Instrument Panel Control Unit (ICUC) software updating procedure

ICUC rewriting work

9/9

- The ECU software can be reprogrammed from the "Initial start-up" - "Reprogramming" screen of the corresponding ECU.
- Before reprogramming, you need to download the FRN file of the ECU of corresponding vehicle from FRN.
- It is necessary to copy the downloaded FRN file to a USB memory and import it into the computer on which the FD is set up.
- After performing reprogramming, it is necessary to upload the FRN file to the FRN server.

### Important

**If the software rewriting fails and ICUC's display is remains blacked out, there is no back to initial state for the meter cluster. In that case, the ICUC must be replaced.**

### Procedure for reprogramming the ICUC

- Download FRN file  
It is necessary to copy the downloaded FRN file to a USB memory and import it into the computer on which the FD is set up.
- Perform Reprogramming
- Turn on the vehicle's ignition.

The screenshot shows the Fuso product selection interface. The top navigation bar includes a search icon, a breadcrumb trail "> Brand > Product group", and utility icons. Below this, the "Fuso" brand is selected, and the "Truck" category is active. A search bar is present. The main area displays a grid of vehicle models, each with an icon and text label. The "eCarter 23MODEL~" model is highlighted with a blue box, and a circled "1" is placed next to it. Below the grid, a note states: "If the model series you are looking for is not listed here, switch directly to your replacement parts ordering system or the Workshop Information System. Other model series can then be selected there." At the bottom, there is a "XENTRY Diagnosis" button.

- ① Click "eCARTER 23MODEL".

Please make a selection.

Options  ②

Option 1: Control units	Option 2: ODX Control units
ABS - Antilock brake system Control unit	BMS 1 - Battery management system 1
ASAM - Advanced signal acquisition and actuation module	BMS 2 - Battery management system 2
CDS - Central data memory Control unit	BMS 3 - Battery management system 3
CGW - Central gateway	DCB - Direct current charge connection unit
CLU - Gearshift lever	OBC 22KW - 22 KW Alternating current Charger
CTP - Common Telematics Platform Control unit	OBL223 - 11 kW Alternating current Charger
DAGW - ACTIVE ATTENTION ASSIST System	
DCDC - DC/DC converter	
EPTO - Electric power take-off system	
EHPS - Electrohydraulic power steering	
EMCM - Electric motor Control unit	
EPB - Electric parking brake	
HVAC - Heating, ventilation and air conditioning Control unit	
HSA - Hill Start Assist Control unit	
ICUC - Instrument cluster Control unit	
MPC 2 - Multifunction camera 2	
MS - Maintenance system Control unit	

③

② Click "Option 1: Control units".

③ Click "Continue" button.

> Diagnosis 12.4V Ignition ON

Quick test view Special functions

**Search**

EP1U - Electric power take-off system (A102)

FMSGW - Fleet management system (FMS) Gateway (X0289)

HSA - Hill Start Assist Control unit (A2)

HVAC - Heating, ventilation and air conditioning (A12)

**ICUC - Instrument cluster Control unit (A11)** ④

MPC2 - Multifunction camera 2 (A84)

MS - Maintenance system (A2 a3)

RDF - Radar sensor (A15)

SMK - FUSO Easy Access ECU (A70)

SRR - Short range radar (A81)

SRS - Supplemental restraint system (A40)

VCU - Vehicle Control unit (A100)

VRDU - Driver assistance system (A53a) ⑤

XMC - SAM with additional functions (A22)

Start quick test Clear fault memory Open TIPS results Implement test prerequisites Tests Continue

④ Click "ICUC".

⑤ Click "Continue" button.

> Diagnosis > ICUC - Instrument cluster Control unit (A11) 11.4V Ignition ON

Version Error codes / Events Actual values Actuators Adaptations

ICUC - Instrument cluster Control unit (A11)

Model	Part number	Supplier	Version
Hardware	---	Continental	255/255 255
Software	034 448 90 21 005	Continental	23/12 00
Software	034 448 91 21 201	Continental	23/06 00
Software	034 448 92 21 003	Continental	23/12 00
Software	034 448 93 21 003	Continental	23/12 00
Software	034 448 94 21 003	Continental	23/12 00
Software	034 448 95 21 003	Continental	23/12 00
Software	034 448 96 21 003	Continental	23/12 00
Software	034 448 97 21 003	Continental	23/12 00
Software	034 448 98 21 003	Continental	23/12 00
Boot software	---	---	22/48 00

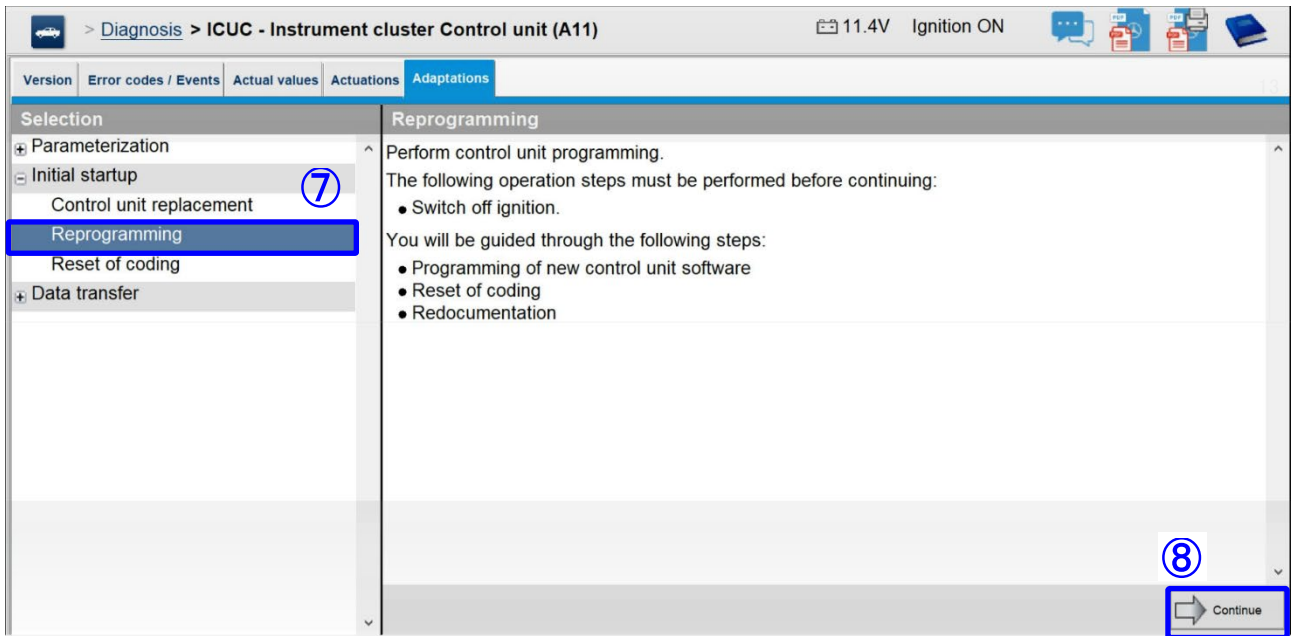
Diagnosis identifier	000800	Control unit variant	App_0800
FUSO object number for hardware	yyyyyyyyyyyyyy	Serial number of control unit	yyyyyyyyyy
Current vehicle identification number	FFC9K610001XXXXX	Original vehicle identification	FFC9K610001XXXXX

⑥ Confirm that the software part number (Total 9) is the one shown in Table1 below before being rewritten.

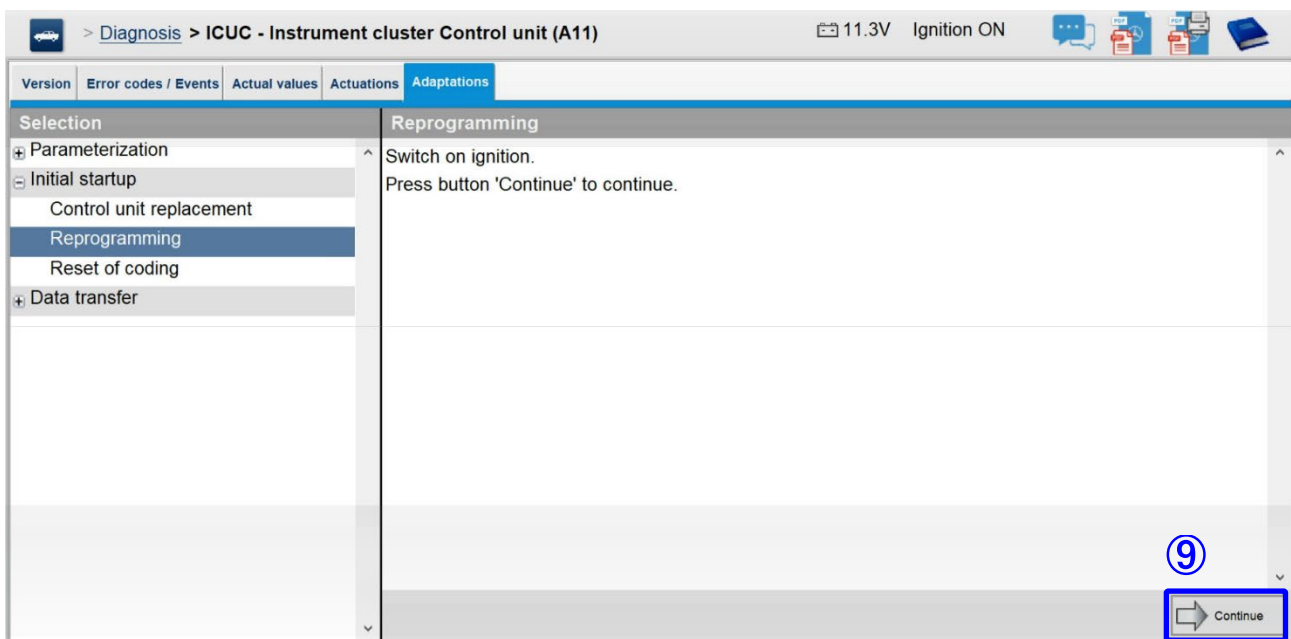
If the software part number is the same after rewriting, rewriting is not necessary.

Table 1 Software part number before rewriting

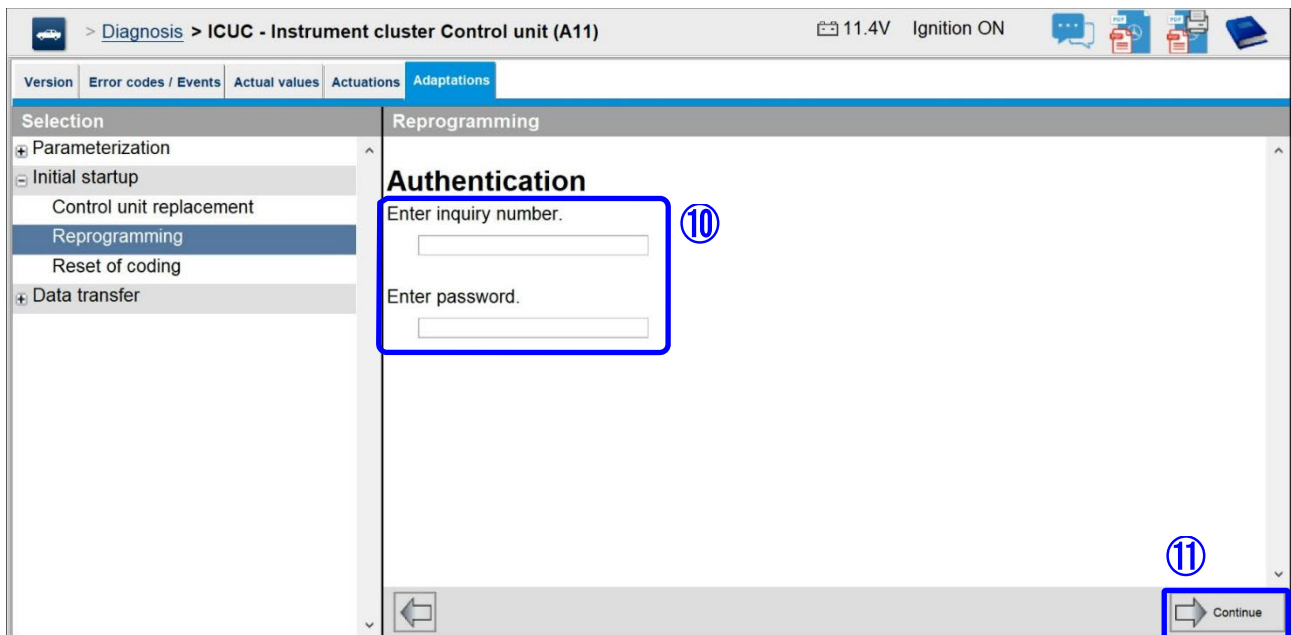
	Software part number	
	Software part number before rewriting	Software part number after rewriting
Software	A034 448 90 21 005	A034 448 90 21 013
Software	A034 448 91 21 201	A034 448 91 21 223
Software	A034 448 92 21 003	A034 448 92 21 011
Software	A034 448 93 21 003	A034 448 93 21 011
Software	A034 448 94 21 003	A034 448 94 21 011
Software	A034 448 95 21 003	A034 448 95 21 011
Software	A034 448 96 21 003	A034 448 96 21 011
Software	A034 448 97 21 003	A034 448 97 21 011
Software	A034 448 98 21 003	A034 448 98 21 011



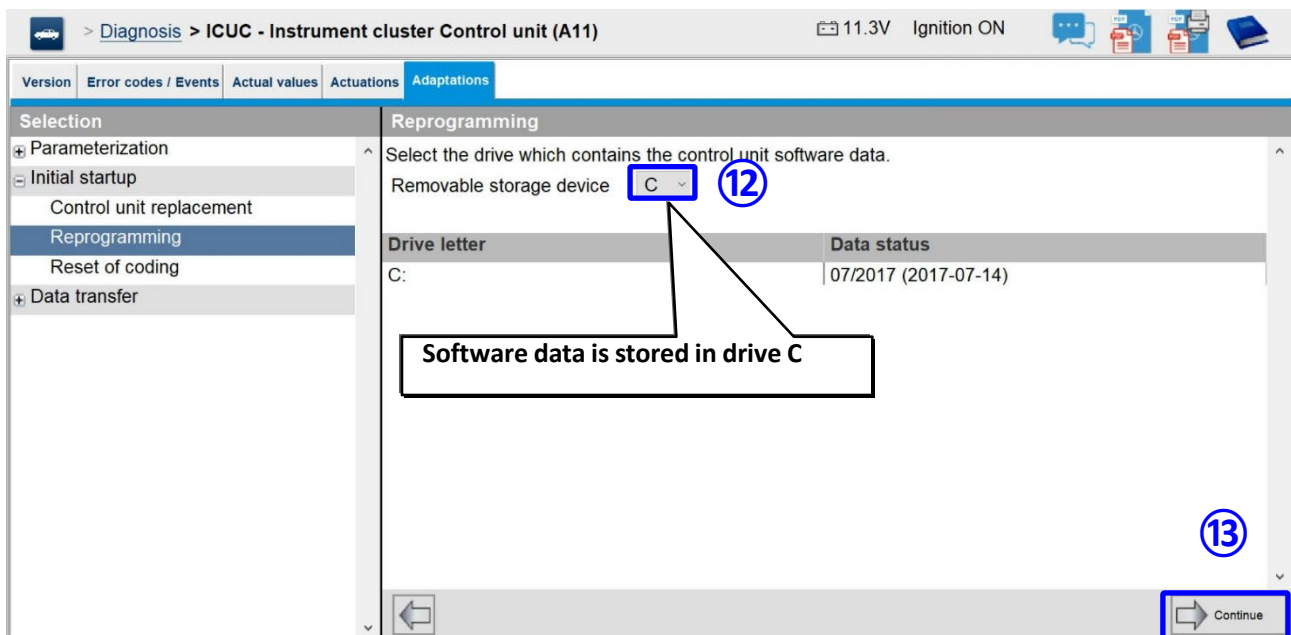
- 7** Click "Reprogramming".
- 8** Click "Continue" button.



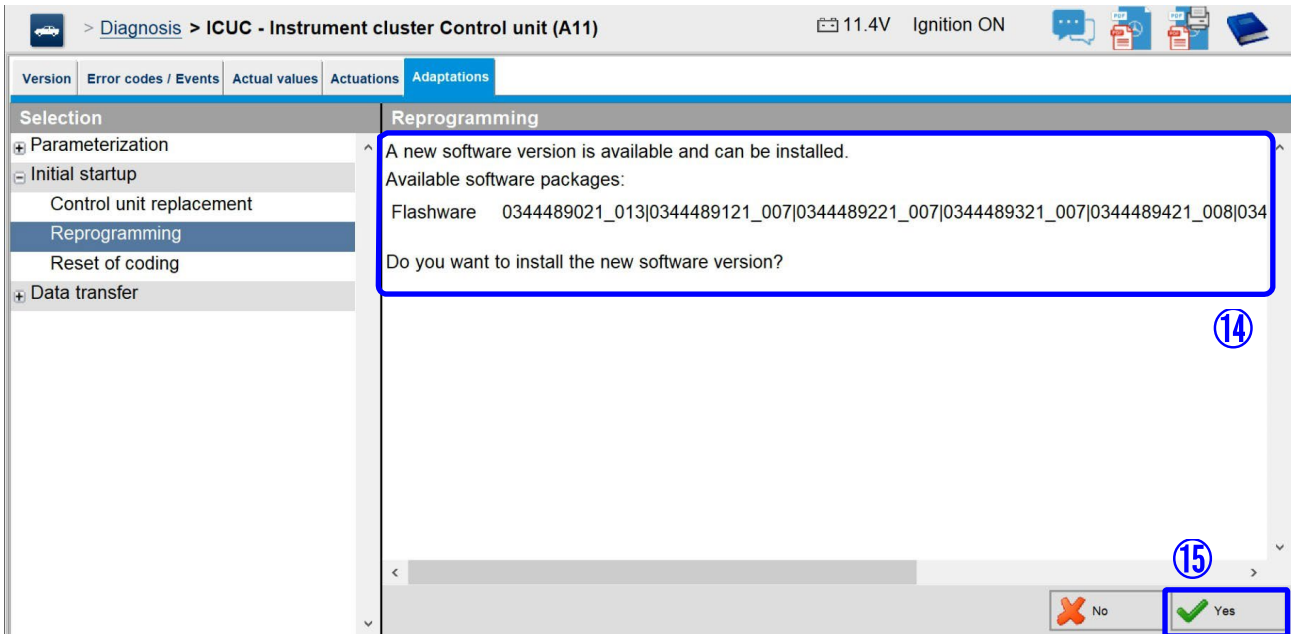
- 9** Click "Continue" button because the ignition is already switched on.



- ⑩ It will enter the inquiry number and password from FRN server.  
(The alphabetical part of the inquiry number must be entered in capital letters.)
- ⑪ Click "Continue" button.



- ⑫ It will select the drive which software data is saving.
- ⑬ Click "Continue" button.



⑭ If installation software is available, it will be displayed as shown above.

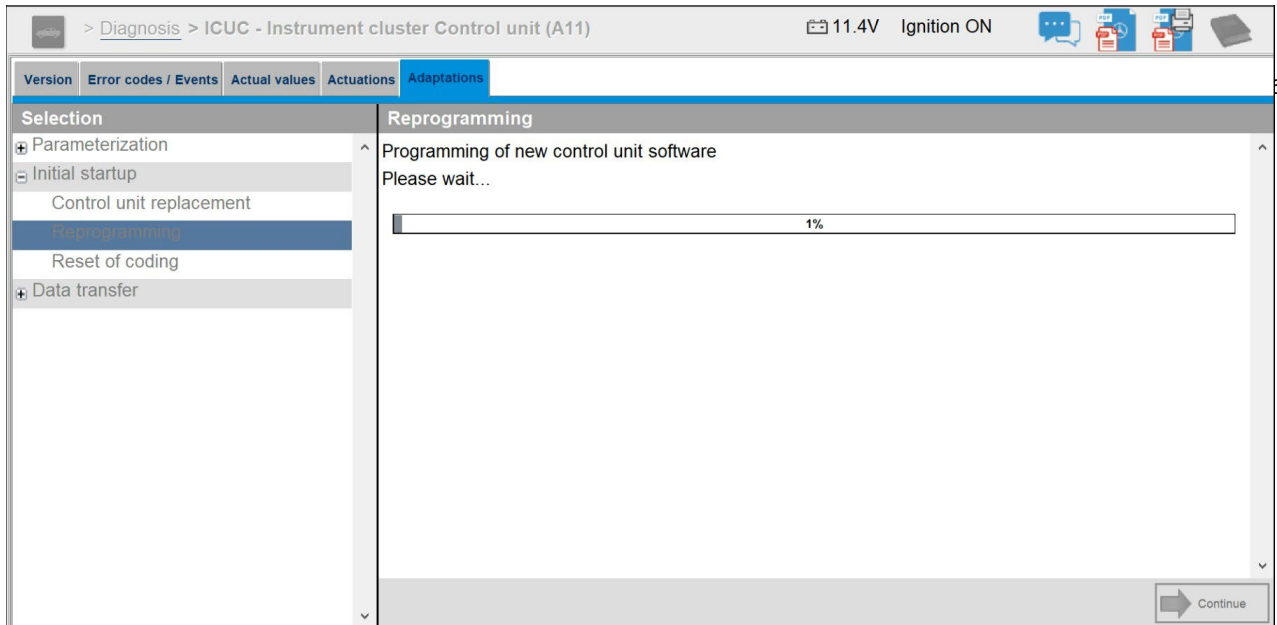
**Important**

**Confirm whether the “Installable software part number” shown in the table 2 below is displayed.**

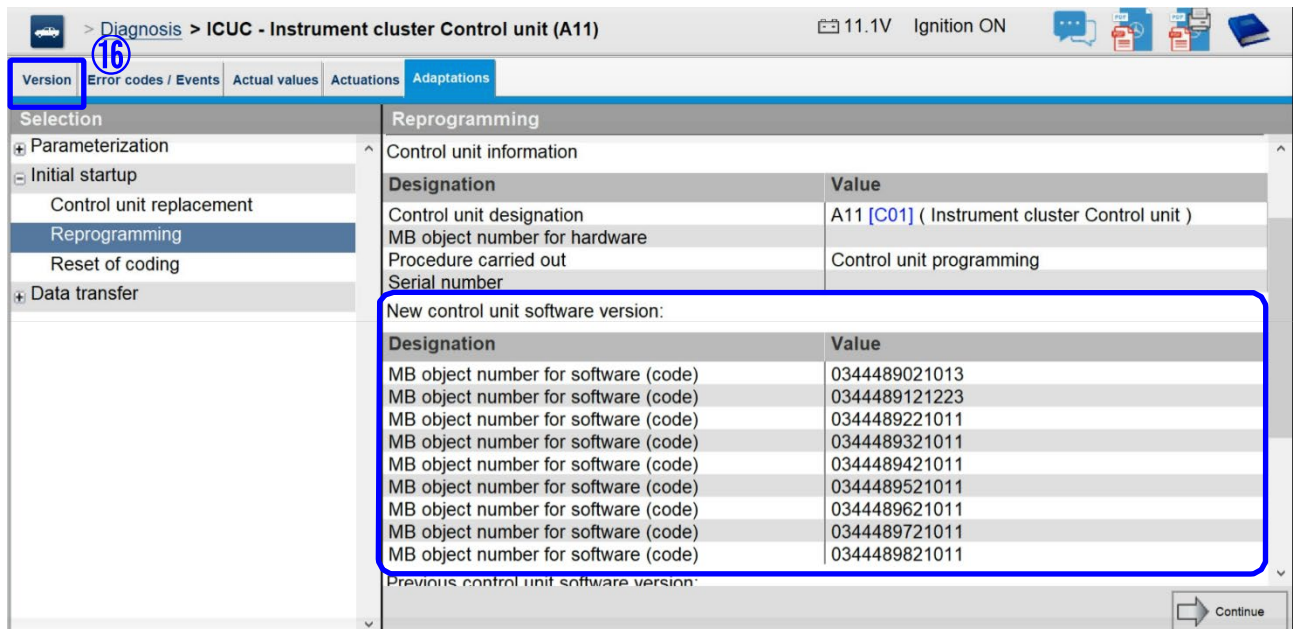
⑮ Click “Yes” button.

Table 2 Rewriting software part number

	Software part number	
	Software part number before rewriting	Software part number after rewriting
Software	A034 448 90 21_013	A034 448 90 21 013
Software	A034 448 91 21_007	A034 448 91 21 223
Software	A034 448 92 21_007	A034 448 92 21 011
Software	A034 448 93 21_007	A034 448 93 21 011
Software	A034 448 94 21_008	A034 448 94 21 011
Software	A034 448 95 21_007	A034 448 95 21 011
Software	A034 448 96 21_008	A034 448 96 21 011
Software	A034 448 97 21_008	A034 448 97 21 011
Software	A034 448 98 21_007	A034 448 98 21 011



- The above screen will be displayed when re-writing starts.



- The above screen will be displayed when re-writing ends.

⑩ Select the tab "Version".

> Diagnosis > ICUC - Instrument cluster Control unit (A11) 11.1V Ignition ON

Version Error codes / Events Actual values Actuators Adaptations

ICUC - Instrument cluster Control unit (A11)

Model	Part number	Supplier	Version
Hardware	---	Continental	255/255 255
Software	034 448 90 21 013	Continental	23/51 00
Software	034 448 91 21 223	Continental	23/51 00
Software	034 448 92 21 011	Continental	23/51 00
Software	034 448 93 21 011	Continental	23/51 00
Software	034 448 94 21 011	Continental	23/51 00
Software	034 448 95 21 011	Continental	23/51 00
Software	034 448 96 21 011	Continental	23/51 00
Software	034 448 97 21 011	Continental	23/51 00
Software	034 448 98 21 011	Continental	23/51 00
Boot software	---	---	22/48 00

Diagnosis identifier	000800	Control unit variant	App_0800
FUSO object number for hardware	yyyyyyyyyyyyyy	Serial number of control unit	yyyyyyyyyy
Current vehicle identification number	FFC0K640004XXXXX	Original vehicle identification	FFC0K640004XXXXX

- After the reprogramming is completed, select the tab “Version” and check that the software number in the blue frame is the same as in the operation manual.

Table 3 Rewriting software part number

	Software part number	
	Software part number before rewriting	Software part number after rewriting
Software	A034 448 90 21_013	A034 448 90 21 013
Software	A034 448 91 21_007	A034 448 91 21 223
Software	A034 448 92 21_007	A034 448 92 21 011
Software	A034 448 93 21_007	A034 448 93 21 011
Software	A034 448 94 21_008	A034 448 94 21 011
Software	A034 448 95 21_007	A034 448 95 21 011
Software	A034 448 96 21_008	A034 448 96 21 011
Software	A034 448 97 21_008	A034 448 97 21 011
Software	A034 448 98 21_007	A034 448 98 21 011

**Extract FRN file / Upload FRN file**

- Upload FRN file on FRN server.