



R26AA

IMPORTANT SAFETY RECALL

NHTSA Recall Number: 26V-032 School Bus
NHTSA Recall Number: 26V-033 Non-School Bus

DATE: March 19, 2026
TO: U.S. DEALERS
SUBJECT: R26AA: Improper Window Markings on Lippert Windows

This notice is sent to you in accordance with the National Traffic and Motor Vehicle Safety Act.

Blue Bird Body Company has decided that

- Certain model year 2026-2027 Blue Bird Vision School Buses (BBCV)
 - manufactured from May 6, 2025 through December 10, 2025
- Certain model year 2026-2027 Blue Bird All American School Buses (T3FE)
 - Manufactured from June 3, 2025 through November 6, 2025
- Certain model year 2026-2027 Blue Bird All American School Buses (T3RE)
 - Manufactured from May 13, 2025 through November 6, 2025
- Certain model year 2026 Blue Bird All American Non-School Buses (T3FE)
 - Manufactured on September 24, 2025

vehicles fail to conform to the Federal Motor Vehicle Safety Standard **FMVSS 205, Glazing Materials**.

This notice applies to your bus(es) identified by both Blue Bird Body Number and Vehicle Identification Number (VIN) on the enclosed yellow cover sheet. If you no longer own the subject bus(es), please complete the appropriate section of the yellow cover sheet and return to Blue Bird in the enclosed pink postage prepaid envelope.

It has been determined certain Blue Bird Vision and All American School and Non-School Buses with Lippert windows may not have a DOT marking on the window. The DOT marking on the window may be partially illegible or not legible at all. This is a FMVSS 205, Glazing Materials Non-compliance. Under certain conditions if the designator is illegible, safety personnel may not know the type of glass leading to an increased risk of personal injury, reduced visibility, and increase the risk of a crash.

Blue Bird shall conduct a safety recall to correct this noncompliance.

Corrective Action:

To correct this condition, Blue Bird will notify the affected dealers and owners and will provide repair instructions. Recall R26AA should be repaired, per R26AA Recall Repair Instructions. **Parts are currently available.**

Labor Reimbursement:

Blue Bird will reimburse the labor cost of the Inspection and Repair related to this recall at no cost to the Dealer or the vehicle owner. The standard repair time (SRT) to accomplish the repairs in accordance with the R26AA remedy procedure(s) is outlined below. The remedy is comprised of Repair A (Inspection) or Repair A (Inspection) and Repair B through H (Repair) based on the number of windows requiring repair. You will select a combination of windows that adds up to the total number of windows that were repaired.



BLUE BIRD

Blue Bird Body Company

Page 2

R26AA

Labor Reimbursement: *(continued)*

Repair A: R26AA Inspection - 0.2 Hours (12 minutes)
Repair B: R26AA Repair (1 Window) - 0.2 Hours (12 minutes)
Repair C: R26AA Repair (2 Windows) - 0.4 Hours (24 minutes)
Repair D: R26AA Repair (3 Windows) - 0.6 Hours (36 minutes)
Repair E: R26AA Repair (4 Windows) - 0.8 Hours (48 minutes)
Repair F: R26AA Repair (5 Windows) - 1.0 Hours (60 minutes)
Repair G: R26AA Repair (6 Windows) - 1.2 Hours (72 minutes)
Repair H: R26AA Repair (7 Windows) - 1.4 Hours (84 minutes)

Recall Parts:

Recall R26AA should be repaired, per R26AA Recall Instructions. You may request parts at customerservice@lci1.com
Parts are currently available.

Technical Support:

Recall R26AA technical support should be directed to Lippert at customerservice@lci1.com

If Blue Bird's records indicate bus(es) subject to this recall were delivered in your service area, a list of affected bus(es) will be enclosed. The bus(es) will be identified by Blue Bird Body Number and Vehicle Identification Number (VIN) on the enclosed yellow cover sheet. **Dealers should verify correct owners and assure complete mailing and shipping addresses are provided for each listed owner.**

It is the dealer's responsibility to verify the correct owner's name, address, and telephone number is provided for each listed vehicle. Any corrections or updates should be made in ClaimsCenter. Addresses that cannot be updated should be forwarded to the Recall Administrator.

Federal law requires that any vehicle lessor receiving this recall notice must forward a copy of this notice to the lessee within ten days.

Dealers are reminded of their responsibilities under Section 154 of The National Traffic and Motor Vehicle Safety Act of 1991. Dealers are required to complete modifications on units in their inventory before delivering to the final owner. Reference Blue Bird Body Company Distributor Memo No. 42-92.

If you have in your possession or have sold a bus that was purchased from another Dealer, which may be affected by this recall, please notify Roberta Markham at 478-822-2763 or roberta.markham@blue-bird.com Questions regarding this recall campaign should be directed to Lisa Hancock.

Sincerely,

Lisa Hancock

Corporate Recall Administrator

Blue Bird Corporation

402 Blue Bird Blvd, Fort Valley, Georgia 31030

Phone 478.822.2242

lisa.hancock@blue-bird.com

Recall Numbers:	NHTSA: 26E-004 (Lippert); NHTSA: 26V-032 (SB) and 26V-033 (NSB) - (Blue Bird)		
	Transport Canada: 2026-021 (SB); Blue Bird Recall Numbers: R26AA (US) R26AA-C (Canada)		
Product:	Window Glass		
Date:	March 9, 2026	Labor Rate:	0.2 hr Inspection (Bus)/0.2 hr Procedure (Window)

Purpose

This document refers to the procedure for adding etched identification to a glass window.

Safety

This document provides general instructions. Many variables can change the circumstances of any procedure, i.e. the degree of difficulty involved in the service operation and the ability level of the individual performing the operation. This document cannot begin to plot out procedures for every possibility, but will provide the general instructions for effectively installing, removing or servicing the system. In the event the skill level required is too advanced or the procedure too difficult, a certified technician should be consulted before performing the necessary operation. Failure to correctly install, remove or service the system may result in voiding the warranty, inflicting injury or even death.

⚠ CAUTION

The "CAUTION" symbol above is a sign that a safety risk is involved and may cause personal injury and/or product or property damage if not safely adhered to and within the parameters set forth in this manual.

⚠ CAUTION

Etching compound is highly corrosive. Nitrile gloves must be worn during this procedure.

⚠ CAUTION

Etching compound is for use on glass only. Follow all safety notices on the etching compound container.

⚠ CAUTION

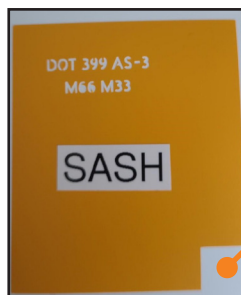
Do NOT rinse the compound, brush or cloth down the drain as the compound can damage pipes.

Required Resources

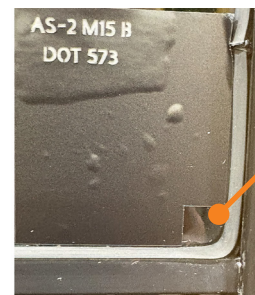
- Dealer/Customer Supplied
 - Safety glasses
 - Glass cleaner
 - Plastic razor blades
- Etching Kits - PN 2026060327
 - Nitrile gloves
 - DOT stencil for the glass
 - Etching compound



Qty. 1 - Driver's Window Stencil



Qty. 10 - Sash Window Stencils



Window Stencil Index Point

Recall Numbers:	NHTSA: 26E-004 (Lippert); NHTSA: 26V-032 (SB) and 26V-033 (NSB) - (Blue Bird)		
	Transport Canada: 2026-021 (SB); Blue Bird Recall Numbers: R26AA (US) R26AA-C (Canada)		
Product:	Window Glass		
Date:	March 9, 2026	Labor Rate:	0.2 hr Inspection (Bus)/0.2 hr Procedure (Window)

Inspection

1. Visually inspect the upper and lower glass of each bus window. Look for the DOT logo.
 - a. Sash Window - Correct (Fig. 1)
 - b. Sash Window - Incorrect (Fig. 2)
2. Note each window where the DOT logo is not compliant (Fig. 2).
 - a. Driver's Window - Correct (Fig. 3)
 - b. Driver's Window - Incorrect (Fig. 4)

Fig. 1



Fig. 2



Fig. 3

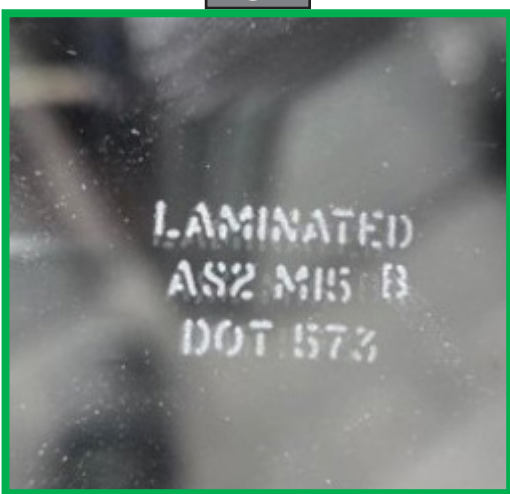


Fig. 4



Recall Numbers:	NHTSA: 26E-004 (Lippert); NHTSA: 26V-032 (SB) and 26V-033 (NSB) - (Blue Bird)		
	Transport Canada: 2026-021 (SB); Blue Bird Recall Numbers: R26AA (US) R26AA-C (Canada)		
Product:	Window Glass		
Date:	March 9, 2026	Labor Rate:	0.2 hr Inspection (Bus)/0.2 hr Procedure (Window)

Preparation

1. Clean the glass (Fig. 5A) using glass cleaner to ensure good adhesion of the template.

Fig. 5



Fig. 6



Fig. 7



2. Apply stencil (Fig. 6) directly above the DOT marking on the glass.
3. Remove the backing of the stencil and affix to the window using the bottom corner and right side of the frame as reference points (Fig. 6).

NOTE: Be sure to rub the template sticker several times to ensure it is well adhered evenly on the glass.

4. Once the sticker is well adhered to the glass, remove the transfer tape to expose the template (Fig. 7).

Recall Numbers:	NHTSA: 26E-004 (Lippert); NHTSA: 26V-032 (SB) and 26V-033 (NSB) - (Blue Bird)		
	Transport Canada: 2026-021 (SB); Blue Bird Recall Numbers: R26AA (US) R26AA-C (Canada)		
Product:	Window Glass		
Date:	March 9, 2026	Labor Rate:	0.2 hr Inspection (Bus)/0.2 hr Procedure (Window)

Instructions

1. Liberally apply the etching compound to the lettering portion by squeezing the bottle and tapping the lettered area of the stencil (Fig. 8).
2. Let the compound stand for 1 minute and reapply.
3. Let the reapplied etching compound stand for 5 minutes. Remove the excess compound with lukewarm water and a clean soft cloth.

NOTE: Dispose of the compound by neutralizing it with baking soda until bubbling ceases. This turns the mixture into a safer, inert compound. The compound can also be made into a solid by mixing with cat litter, sand, or plaster of Paris. Either mixture can be put in the regular trash.

⚠ CAUTION

Do NOT rinse the compound, brush or cloth down the drain as the compound can damage pipes.

Fig. 8

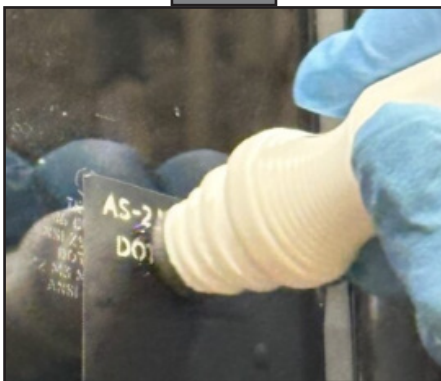
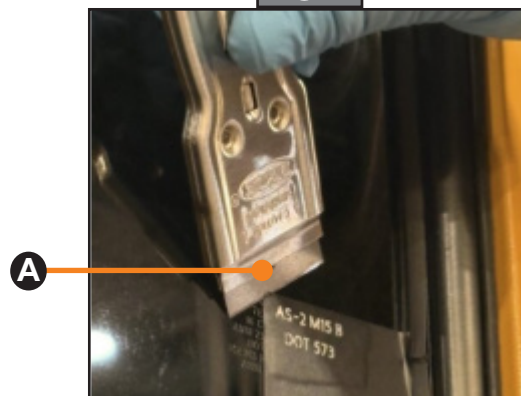


Fig. 9



4. Remove the stencil (Fig. 9).

NOTE: If necessary, use the included plastic razor blade to remove the stencil (Fig. 9A).

5. Clean newly etched glass with glass cleaner to remove any residual etching compound.