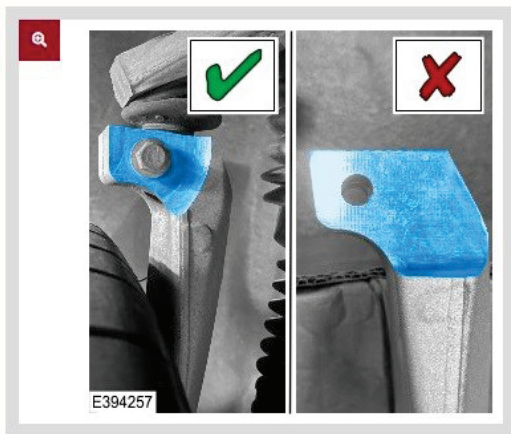


## SAFETY RECALL N759v6 / D041 CAREPOINTS

Range Rover

- 14MY-16MY Range Rover

## SERVICE INSPECTION 1



1.

**CAUTIONS:**

- The vehicle may have either type of front wheel knuckle installed, both types of front wheel knuckles could be installed on the vehicle.
- Both front wheel knuckles must be inspected. The vehicle may have a different type of front wheel knuckle installed on the left side to the right side.

## Inspect the front right wheel knuckle.

- If the front right wheel knuckle is the type shown in the illustration with the GREEN ✓, it has PASSED service inspection 1. No further action is required for the front right wheel knuckle, **continue to the next step.**
- If the front right wheel knuckle is the type shown in the illustration with the RED X, it has FAILED service inspection 1. **Continue to the next step.**

- There are two different suppliers that have produced steering knuckles for these vehicles.
- Only one supplier parts are affected by this recall.