



Service Bulletin

American Honda Motor Co., Inc.

NC750XD #2
Revised: July 2025

SAFETY RECALL

2024 NC750XD FRONT TIRE INSPECTION

(This bulletin has been revised to provide parts information and repair procedure.)

BACKGROUND

Honda is launching a **SAFETY RECALL** on **CERTAIN 2024 NC750XD motorcycles** to inspect and, if necessary, replace the front tire. Due to a manufacturing defect, the front tire may be damaged internally, potentially causing instability. If the motorcycle continues to operate with an affected tire, the tread surface may bulge, causing vibration and instability while riding, increasing the risk of a crash or injury.

AFFECTED UNITS

As of June 23, 2025, you **MUST NOT SELL** any **AFFECTED NEW or USED** 2024 NC750XD motorcycle until it is repaired according to this Service Bulletin.

- To search for applicable recalls on a specific unit, you **MUST** use *Unit Information* on **iN**.
- To manage your affected new inventory, use your dealer *eResponsibility Report* on **iN**.

CUSTOMER NOTIFICATION

American Honda intends to mail customer letters to all owners of affected 2024 NC750XD motorcycles in late July 2025. Customers will be informed that their motorcycle may be affected by a safety-related defect and will be advised to make an appointment with an authorized Honda dealer for repair.

PARTS INFORMATION

Parts needed for the repair are under TechLine control. If an affected unit fails the **TIRE INSPECTION** on [page 3](#), you must submit a request through *TechLine Connect* to have the parts released.

Part Name	Part Number	Qty.
Tire - Front (Dunlop)	44711-MKW-305	1
Kit - Bolt	06421-MKW-305	1

DEALER REPAIR RESPONSIBILITY

- Repairs must be performed by a qualified technician.
- Performing this repair exactly as shown in Repair Procedure instructions is critical for the remedy to be effective. Carefully follow all instructions.
- Service Management should inspect and confirm the repair.
- Dealer submission of a warranty claim affirms this repair was properly performed.

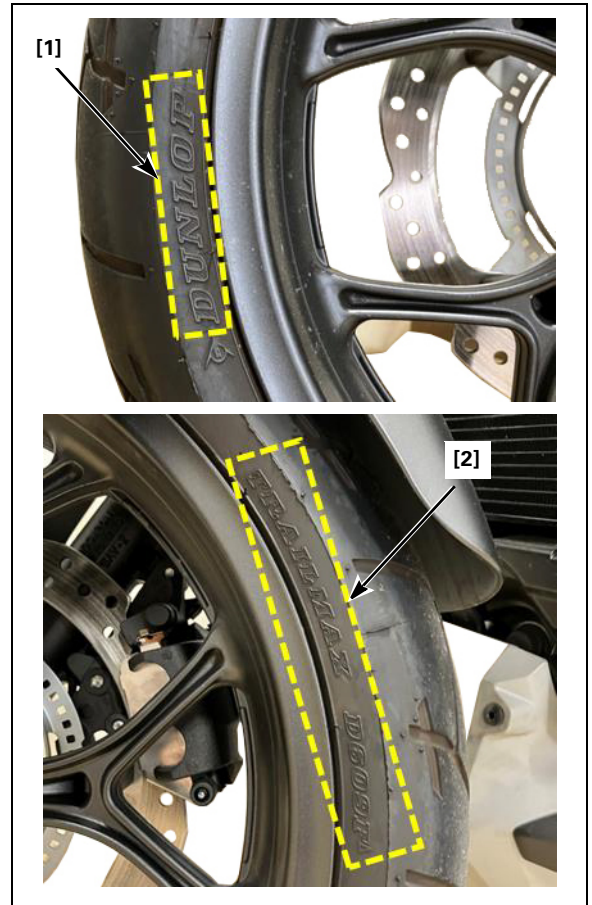
REPAIR PROCEDURE

TIRE INSPECTION

1. Check the tire information shown on the left-hand sidewall of the front tire.
2. Confirm the tire manufacturer / brand [1] as "DUNLOP" and Name [2] as "TRAILMAX D609F".

If a Dunlop TRAILMAX D609F front tire is installed, proceed to step 3.

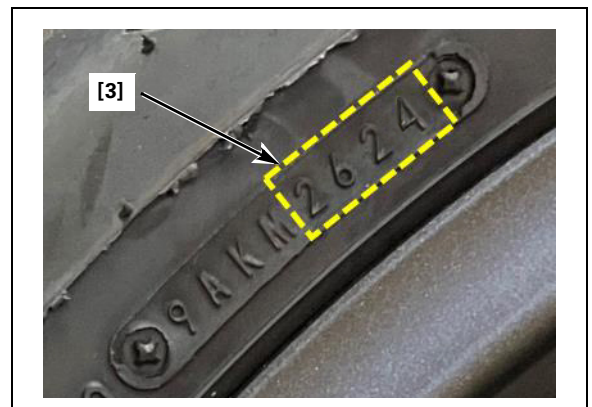
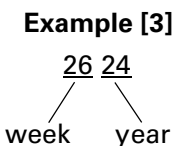
If the tire is **NOT** "DUNLOP / TRAILMAX D609F", the vehicle is not an affected unit. Proceed to the Warranty Claim Information section and file an *Inspection Only* claim.



3. If the date of manufacture [3] on the tire is between the 2nd and 26th weeks of 2024, the tire is affected by this recall and must be replaced.

The first two digits designate the week and the last two digits designate the year.

Affected Tire Dates: 0224 through 2624



FRONT WHEEL REMOVAL

1. Remove the front brake caliper mounting bolts [1] and brake caliper/bracket assembly [2].

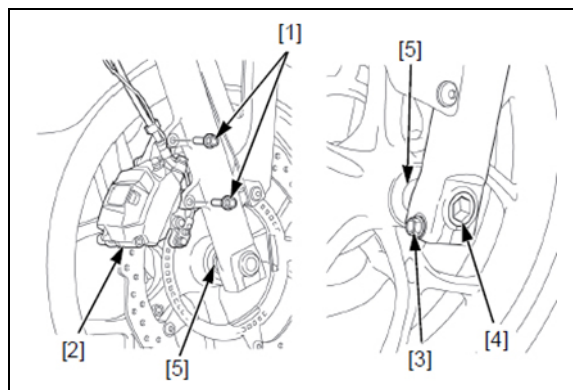
NOTES:

- Do not suspend the brake caliper/bracket assembly from the brake hose. Do not twist the brake hose.
- Do not operate the brake lever after removing the front brake caliper.

2. Loosen the front axle pinch bolt [3] and front axle [4].

Support the motorcycle using a safety stand or hoist, raise the front wheel off the ground.

3. Remove the front axle, front wheel, and side collars [5].



FRONT TIRE REPLACEMENT

1. Remove the existing tire using the information outlined in the *Common Service Manual* or your dealership's standard tire replacement procedures.

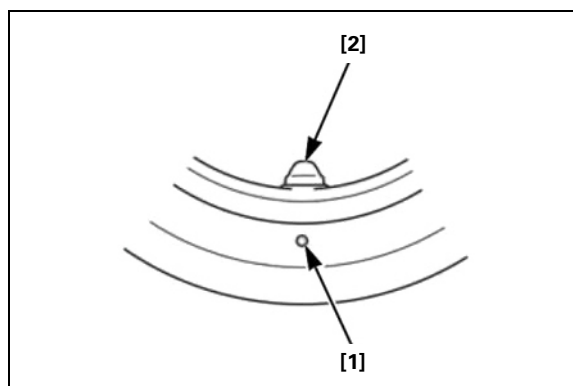
NOTES:

- Drill a hole through the sidewall of the removed tire, and then dispose (recycle) it so it cannot not be installed on another motorcycle.
- Warranty claim template KS4B includes reimbursement of \$5.00 for tire recycling and \$1.00 for replacement wheel weights.

2. Install the new tire listed in the Parts Information section using the following information. Note the rotating direction marks [1] on the tire, and upon tire installation, always fit the tire so the marks face the same direction.



- For optimum balance, the tire balance mark [1] (light mass point: a paint dot on the side wall) must be located next to the valve stem [2]. Remount the tire if necessary.



3. Mount the new tire.
4. Balance the new tire and wheel.

NOTES:

- Carefully check the wheel and tire balance before reinstalling the wheel.
- If you do not have a wheel balancer machine or spin balancer, see the Common Service Manual for manual wheel balancing procedure.
- Do not add more than 60 g (2.1 oz) to the wheel.



FRONT WHEEL INSTALLATION

1. Install the side collars [1] to the front wheel. Apply a thin coat of grease to the front axle sliding surface.
2. Install the front wheel between the fork legs.
3. Install the front axle [2] from left side.
Tighten the front axle to the specified torque.

TORQUE: 74 N·m (7.5 kgf·m, 55 lbf·ft)

4. Install the front brake caliper/bracket assembly [3] and the new brake caliper mounting bolts from the Bolt Kit [4], and then tighten to the specified torque.

TORQUE: 30 N·m (3.1 kgf·m, 22 lbf·ft)

5. With the front brake applied, pump the forks up and down several times to seat the axle and check brake operation.

6. Tighten the front axle pinch bolt [5] to the specified torque.

TORQUE: 22 N·m (2.2 kgf·m, 16 lbf·ft)

