

June 19, 2025

Version 3

Safety Recall: 2023–25 MDX, 2021–25 TLX Brake Pedal Pivot Pin Inspection

Supersedes version 2, dated June 16, 2025, to revise the information in **yellow**.

APPLIES TO

Year	Model	Trim Level	VIN Range
2023–25	MDX	ALL	Check the iN VIN status for eligibility.
2021–25	TLX	ALL	Check the iN VIN status for eligibility.

REVISION SUMMARY

Under step 3, information was added.

BACKGROUND

The brake pedal pivot pin may not have been properly staked during assembly. Over time, the pivot pin can potentially back out of the brake pedal bracket causing side to side movement in the brake pedal. A loose brake pedal could lead to diminished or loss of braking function and/or the brake light to remain illuminated, potentially increasing the risk of a crash or injury.

CLIENT NOTIFICATION

Owners of affected vehicles will be sent a notification of this safety recall. Do an iN VIN status inquiry to verify eligibility.

Some vehicles affected by this campaign may be in your new or used vehicle inventory.

Failure to repair a vehicle subject to a recall or campaign may subject your dealership to claims or lawsuits from the customer or anyone else harmed as a result of such failure. To see if a vehicle in inventory is affected by this safety recall, do a VIN status inquiry before selling it.

CORRECTIVE ACTION

Perform an inspection of the brake pedal pin using the brake pedal pivot pin inspection tool. If the inspection fails, replace the brake pedal assembly.

CLIENT INFORMATION: The information in this bulletin is intended for use only by skilled technicians who have the proper tools, equipment, and training to correctly and safely maintain your vehicle. These procedures should not be attempted by “do-it-yourselfers,” and you should not assume this bulletin applies to your vehicle, or that your vehicle has the condition described. To determine whether this information applies, contact an authorized Acura automobile dealer.

PARTS INFORMATION

Year	Model	Trim Level	Part Name	Part Number	Quantity
2023–24	MDX	BASE, TECH, ADV	Pedal Assembly., Brake	46600-TYA-A81	1
2023–24	MDX	A-Spec	Pedal Assembly., Brake	46600-TYA-L81	1
2025	MDX	BASE, TECH, ADV	Pedal Assembly., Brake	46600-T90-A81	1
2025	MDX	A-Spec	Pedal Assembly., Brake	46600-TYA-L51	1
2023–25	MDX	Type S	Pedal Assembly., Brake	46600-TYB-L72	1
2023–25	MDX	ALL	Bolt-Washer (6X25) (AIRBAG)	90178-TZ5-003	2

Year	Model	Trim Level	Part Name	Part Number	Quantity
2021–25	TLX	BASE, TECH, ADV	Pedal Assembly., Brake	46600-TGV-A83	1
2021–25	TLX	A-Spec, Type S	Pedal Assembly., Brake	46600-TGV-L83	1
2021–25	TLX	ALL	Bolt-Washer (6X25) (AIRBAG)	90178-TZ5-003	2

REQUIRED MATERIALS

None.

TOOL INFORMATION

The Brake Pedal Pivot Pin Inspection Tool has been auto-shipped to your dealer. There is no need to order at this time as quantities are limited. Contact the Special Tools Hotline (833) 949-4672 and/or email special_tools@ahm.honda.com for information.

Tool Name	Part Number	Quantity
Brake Pedal Pivot Pin Inspection Tool	07AAC-TGVA100	1

WARRANTY CLAIM INFORMATION

Operation Number	Description	Flat Rate Time	Defect Code	Symptom Code	Template ID	Failed Part Number
410502	Inspect brake pedal pivot pin	0.3hr	6PB00	XLY00	B25017A	46600-TYA-L81
410111	2023-24 MDX Base, Tech, ADV: Replace brake pedal assembly (includes inspection)	0.8hr	6PB00	XLY00	B25017B	46600-TYA-A81
410111	2023-24 MDX A-Spec: Replace brake pedal assembly (includes inspection)	0.8hr	6PB00	XLY00	B25017C	46600-TYA-L81
410111	2025 MDX Base, Tech, ADV: Replace brake pedal assembly (includes inspection)	0.8hr	6PB00	XLY00	B25017D	46600-T90-A81
410111	2025 MDX A Spec: Replace brake pedal assembly (includes inspection)	0.8hr	6PB00	XLY00	B25017E	46600-TYA-L51
410111	2023-25 MDX Type S: Replace brake pedal assembly (includes inspection)	0.9hr	6PB00	XLY00	B25017F	46600-TYB-L72

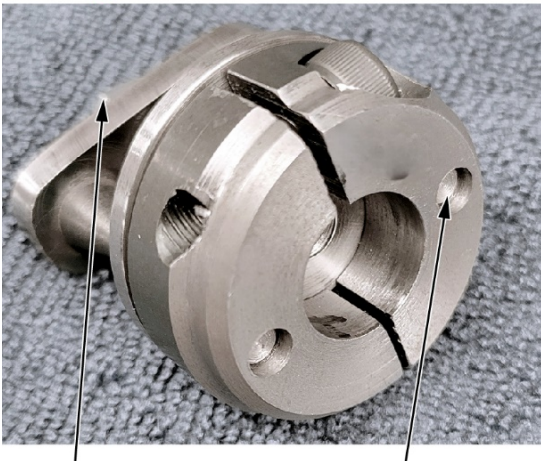
Operation Number	Description	Flat Rate Time	Defect Code	Symptom Code	Template ID	Failed Part Number
410502	Inspect brake pedal pivot pin	0.3HR	6PB00	XLY00	B25017G	46600-TGV-L83
410111	2021-25 TLX Base, Tech, ADV: Replace brake pedal assembly (includes inspection)	1.0HR	6PB00	XLY00	B25017H	46600-TGV-A83
410111	2021-25 TLX A-Spec: Replace brake pedal assembly (includes inspection)	1.0HR	6PB00	XLY00	B25017J	46600-TGV-L83
410111	2021-25 TLX Type S: Replace brake pedal assembly (includes inspection)	1.1HR	6PB00	XLY00	B25017K	46600-TGV-L83

INSPECTION PROCEDURE

A video supporting this service bulletin can be found by clicking: [Brake Pedal Pivot Pin Inspection](#).

1. Prepare the brake pedal pivot pin inspection tool by backing out the center bolt so its loading pins are slightly recessed below the mating surface of the tool.

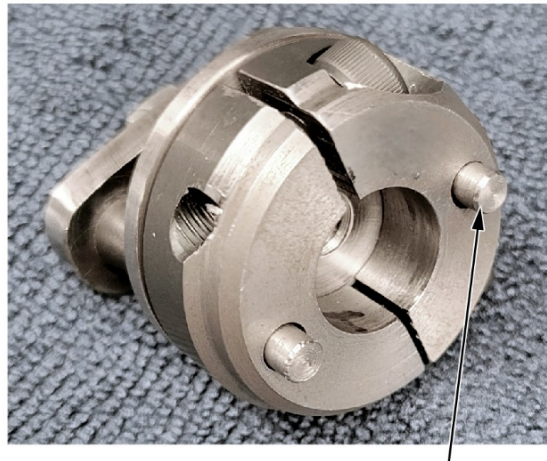
GOOD ✓



CENTER BOLT

LOADING PINS
Recessed, good.

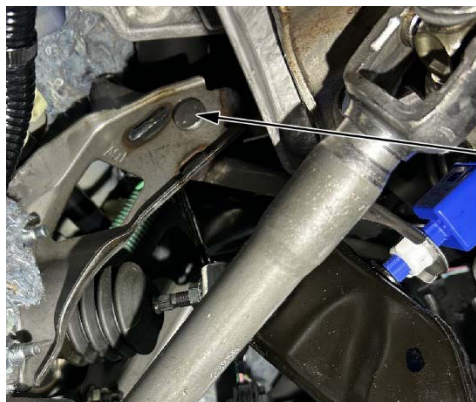
NO GOOD ✗



LOADING PINS
Protruding, no good.

2. Locate the brake pedal pivot pin on the left side of the brake pedal assembly.

NOTICE: Do not attach magnetic lights, tools, etc. to the brake pedal bracket or the brake pedal stroke sensor could be damaged.



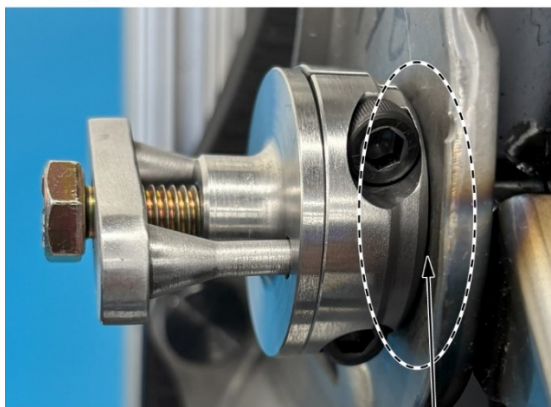
BRAKE PEDAL
PIVOT PIN

3. Place the inspection tool over the head of the pivot pin, making sure it's flush against the brake pedal bracket.



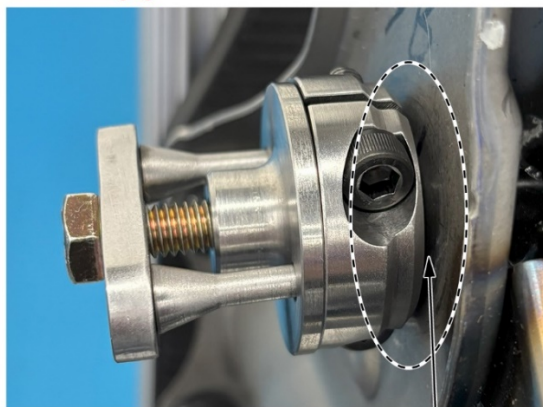
If the tool **DOES NOT** sit flush against the brake pedal bracket after multiple attempts, contact your DPSM for further instructions.

GOOD ✓



INSPECTION TOOL
Flush.

NO GOOD ✗

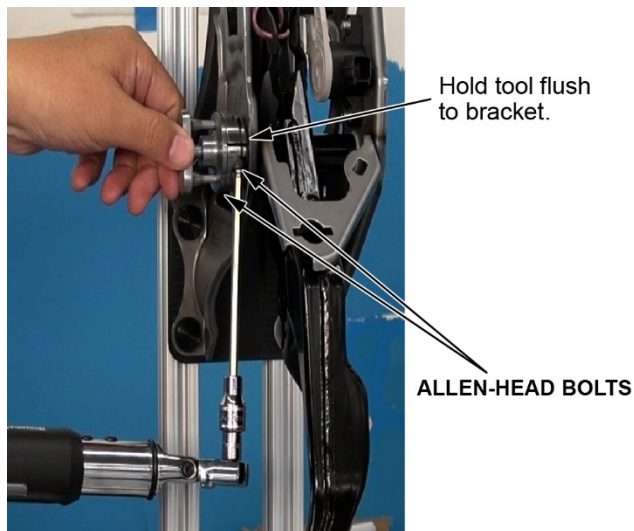


INSPECTION TOOL
Not flush.

4. Rotate the inspection tool so the two Allen head bolts are positioned downward, then use a ¼ in drive torque wrench to torque the Allen head bolts to 2 lb·ft (24 lb·in).

NOTICE: Do not over torque the Allen head bolts or the brake pedal bracket and tool could be damaged.

NOTE: Be sure the inspection tool stays flush against the brake pedal bracket when torquing.

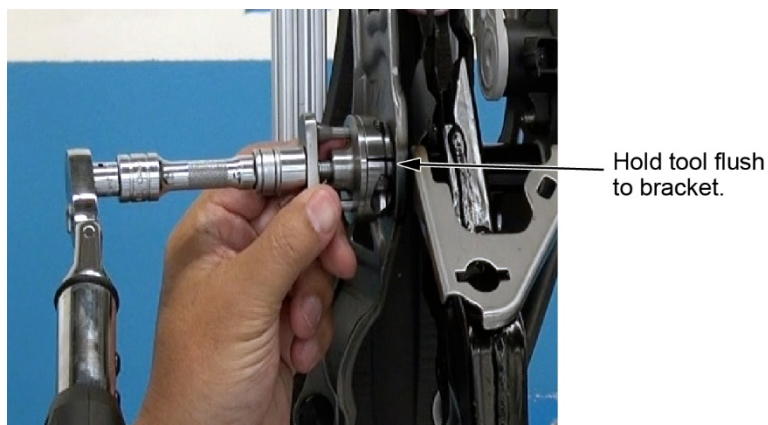


5. Hand-tighten the center bolt to seat the inspection tool's loading pins against the brake pedal bracket.
6. While holding the inspection tool against the brake pedal bracket, use a ¼ in drive torque wrench to torque the center bolt to 2 lb·ft (24 lb·in) or until the center bolt bottoms out, whichever comes first.

NOTICE:

- Hold the inspection tool by hand. Do not use a screwdriver, pry bar, etc. to hold the tool or it could be damaged.
- Do not over torque the center bolt or the brake pedal bracket and tool could be damaged.

NOTE: If the inspection tool slips off, begin this procedure again at step 1.

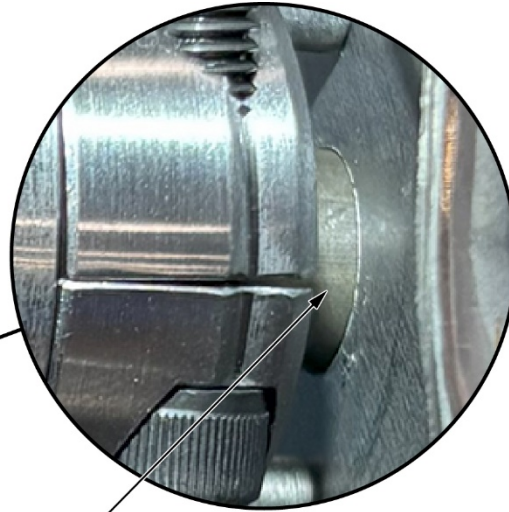
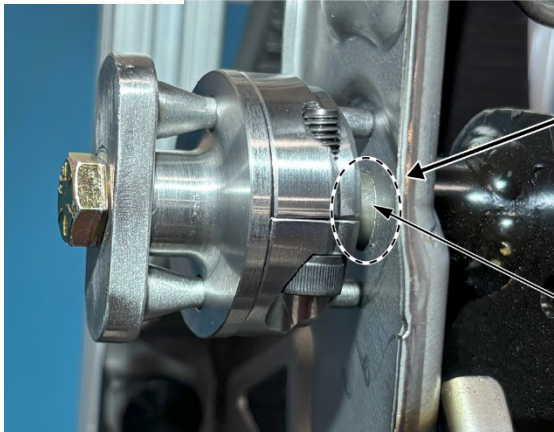


7. Use the following information to determine if the brake pedal assembly must be replaced.

Torque Spec NOT Achieved, Center Bolt Bottomed Out

- If the torque spec was not achieved and the center bolt bottomed out, causing the inspection tool to pull away from the brake pedal bracket with the pivot pin attached, the brake pedal assembly must be replaced. Proceed to **IMAGE INSTRUCTIONS**.

NO GOOD ❌



Tool pulled away.
Repair needed.

- If the torque spec was achieved and the tool stayed flush to the brake pedal bracket, go to **Torque Spec Achieved**.

Torque Spec Achieved

If the torque spec was achieved, pull outward a few times on the inspection tool by hand then remove the tool and inspect the pivot pin.

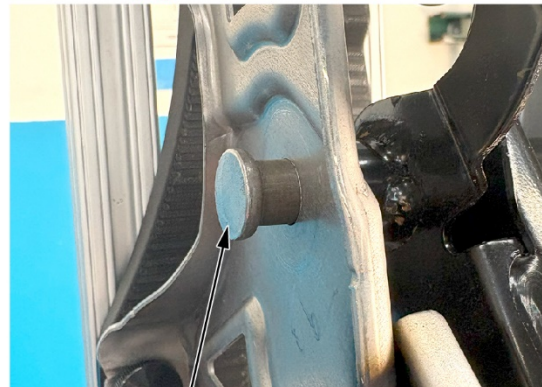
- If the pivot pin remained flush against the brake pedal bracket, no repair is needed.
- If the pivot pin pulled away from the brake pedal bracket and is no longer flush, the brake pedal assembly must be replaced. Proceed to **IMAGE INSTRUCTIONS**.

GOOD ✅




PIVOT PIN
Pin is flush. No
repair is needed.

NO GOOD ❌



PIVOT PIN
Pin is pulled away, not
flush. Repair is needed.

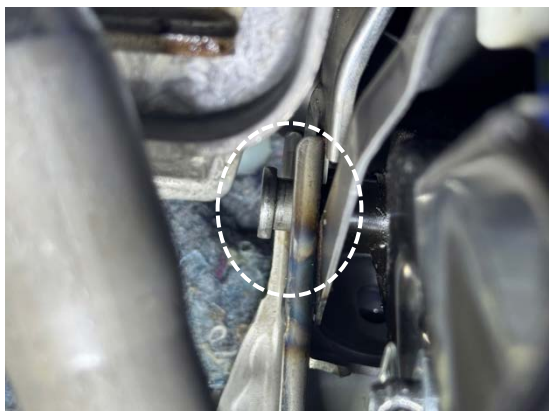
IMAGE INSTRUCTIONS

	<p>ONLY submit an image if the pivot pin is “NO GOOD” (pin pulled away from the bracket) and the brake pedal bracket assembly must be replaced.</p> <p>DO NOT submit an image if the pivot pin is “GOOD” (pin stayed flush with the bracket). No repair is needed.</p>
---	--

1. Take a photo showing the pivot pin pulled away from the brake pedal bracket. See example below of the angle the photo may need to be taken when in the vehicle

NOTE:

- Be sure the image is clear, well-lit and in-focus.
- **Only send an image of the pivot pin if pulled away from the bracket (“No Good”). Do not send an image if the pivot pin remained flush (“Good”).**



2. Scan the QR code below to order the replacement brake pedal assembly.

NOTE:

- If you cannot scan the QR code, click [here](#).
- If further assistance is needed, contact your DPSM for assistance.



3. Once the brake pedal assembly is received, go to the REPAIR PROCEDURE section of the service bulletin to do the repair.

NOTE: **Do not** return the vehicle to the client until the brake pedal assembly has been replaced and the repair is complete.

REPAIR PROCEDURE

Replace the brake pedal assembly per the service manual.

[MDX Brake Pedal Assembly replacement](#)

[TLX Brake Pedal Assembly replacement](#)