

Subject: **TS45 Emergency Exit Control**

Bulletin type: **RECALL**

Bulletin Number: **TS45-SR-2503**

PQR Number: -

Rev Nu: **00**

Ref. Number: **700004740**

Vehicle Model: **TS45**

Labor time: **45 Minute (for 1 vehicle)**

Release date: **28.05.2025**

Expiration Of Validity : **28.05.2026**

**What to do with off coming parts:**

- Scrap
- Return
- Use with additional parts
- On consignment
- No off coming parts

**What to do with outstanding parts of previous revision:**

- Scrap
- Return
- Use with additional parts
- On consignment
- No off coming parts

**Description of the modification:**

This Service Bulletin includes the control method and instructions to be applied in all relevant vehicles in the field, regarding the problem of knob breakage in the emergency exits used in TS45 vehicles.

Liabile: ARZU GEZMEN

Confirmation & Release: CEMRE KILINÇ

## SAFETY INSTRUCTIONS

### 1. Mechanical Requested Dress Code



#### WARNING:

- Dress properly to avoid personal injury and damage to the vehicle

- ✓ Always wear protective clothing
- ✓ Do not wear any worn or loose-fitting clothing
- ✓ Remove jewelry before starting to work
- ✓ In case of long hair, use hairnet
- ✓ The illustration on the left shows some of the correct and incorrect clothing
- ✓ Sharp edged items should be avoided in order not to scratch vehicle (i.e. belts, watches, necklace)

### 2. Protect Seats when Mechanic Starts Working



- ✓ Seats, trimming, upholstery stuff and carpeting should be protected with appropriate coverings.

### 3. Welding on the Chassis

- a. Always disconnect the batteries (starting with the negative lead).
- b. Disconnect the connectors of electrical and electronic equipment (electronic control units, sensors and actuators) if they are less than 2 meters away from the chassis part to be welded or the earth terminal of the welding equipment.
- c. The earth terminal should never be attached to vehicle components such as engine, axles and springs. Arcing on these parts is not permitted, because of the risk of damage to bearings, springs, etc.
- d. The earth terminal must make good contact and be placed as close as possible to the part to be welded.
- e. Plastic pipes, rubber parts and parabolic springs should be well protected against welding spatter and temperatures higher than 70°.
- f. The contact switch must not be in the accessory or contact position. The contact key should be removed.
- g. Reconnect in reversed order of disconnecting. Ensure that a good earth connection is made between chassis, engine and cab.

## PARTS LIST

Released Piece: -

Output Parts: -

Input Parts: -

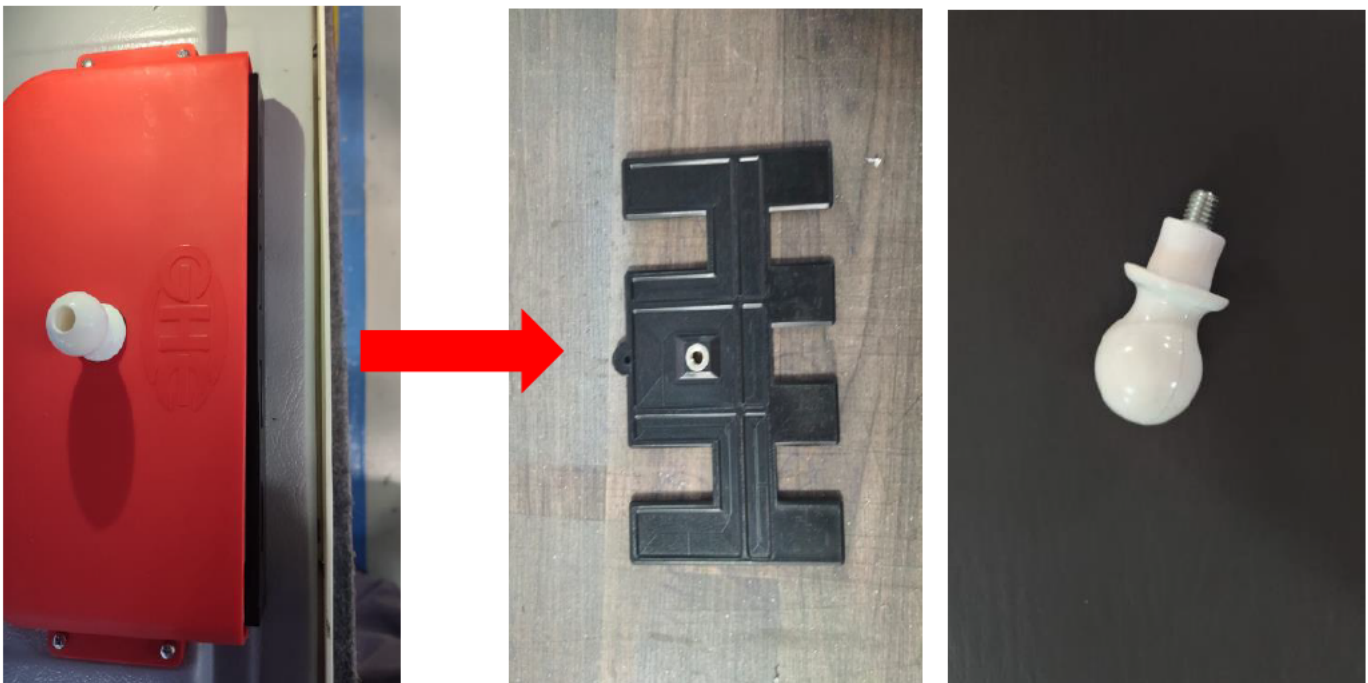
**\*\*This Service Bulletin includes the control method and instructions to be applied in all relevant vehicles in the field, regarding the problem of knob breakage in the emergency exits used in TS45 vehicles.**

### **PRE-INSPECTION INSTRUCTION FOR EMERGENCY EXIT ASSEMBLY**

Before starting the inspection process, ensure that the following detailed components located on the emergency exit assembly:

- White knob component
- Black plastic mechanism component

are properly installed, complete, and securely in place.



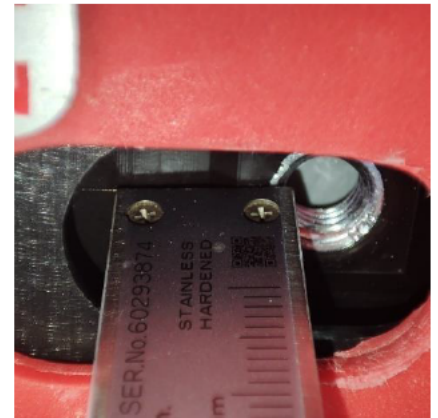
## Implementation Steps:

1. **Assembly Check:**
  - Visually and physically verify that both components are present and correctly assembled.
2. **Damage and Deficiency Check:**
  - Inspect the components for any signs of damage such as cracks, deformation, or looseness.
3. **Procurement Process:**
  - If any component is missing or damaged, the inspection process must not begin until the necessary parts have been procured and replaced.
4. **Inspection Approval:**
  - Once all components are confirmed to be intact and properly installed, proceed with the inspection process.

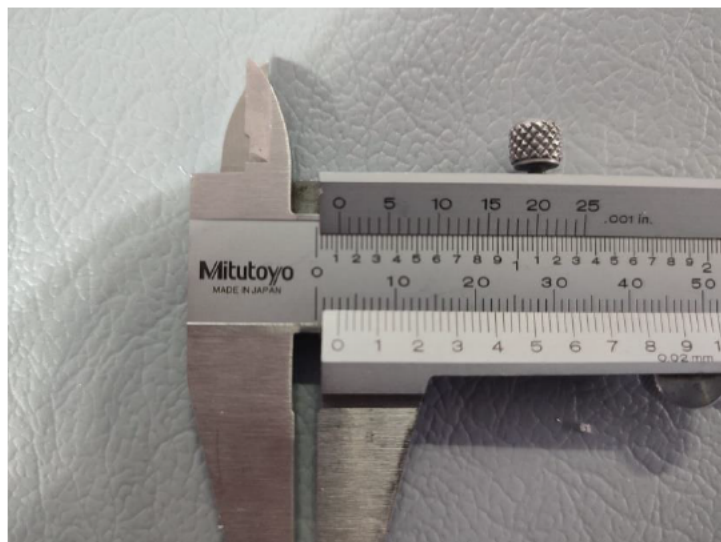
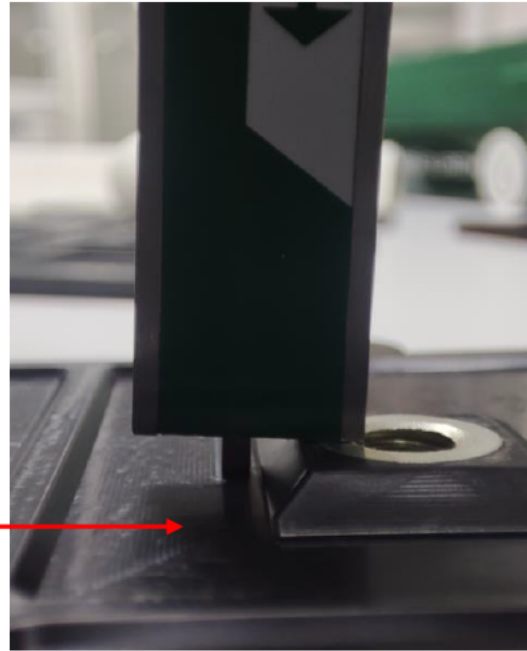
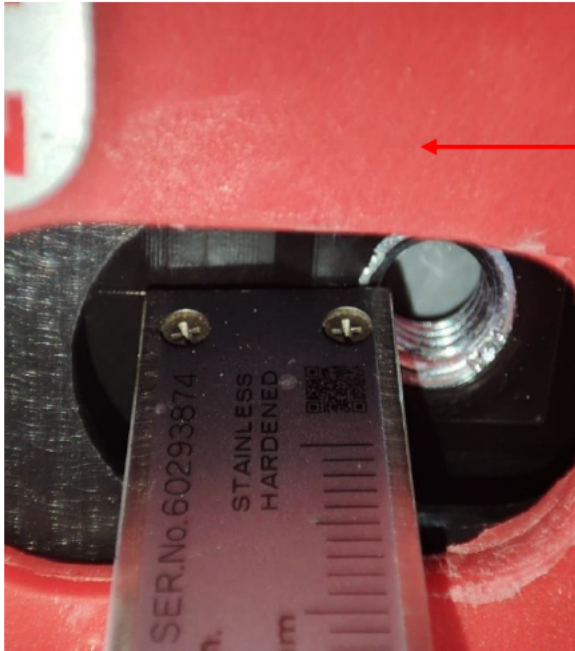
## CONTROL METHOD

Remove the white knob piece on the emergency exit.

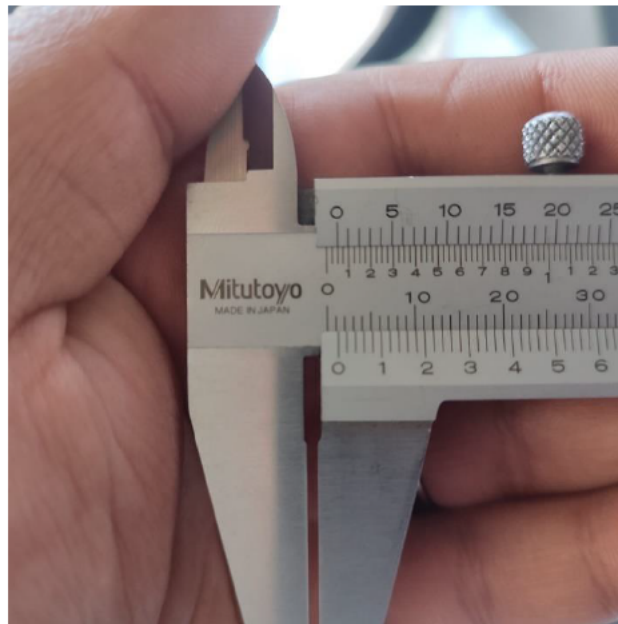
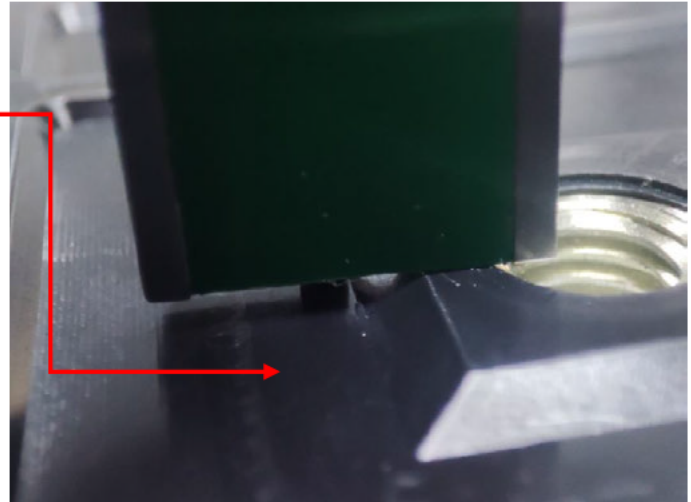
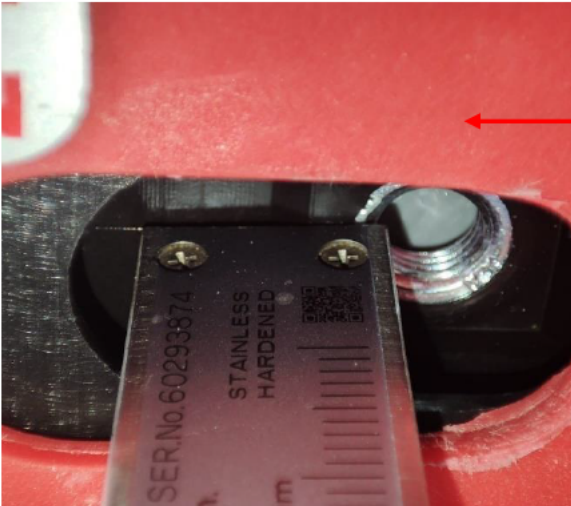
To check that the piece is mounted on the appropriate surface, measure the step difference indicated in the image with a caliper.



- 1) If the step difference between the two surfaces indicated in the image below is 3 mm, it means that the lock mechanism is mounted on the appropriate surface.



- 2) If the step difference between the two surfaces indicated in the image below is 1,5 mm, it means that the lock mechanism is mounted on the wrong surface.

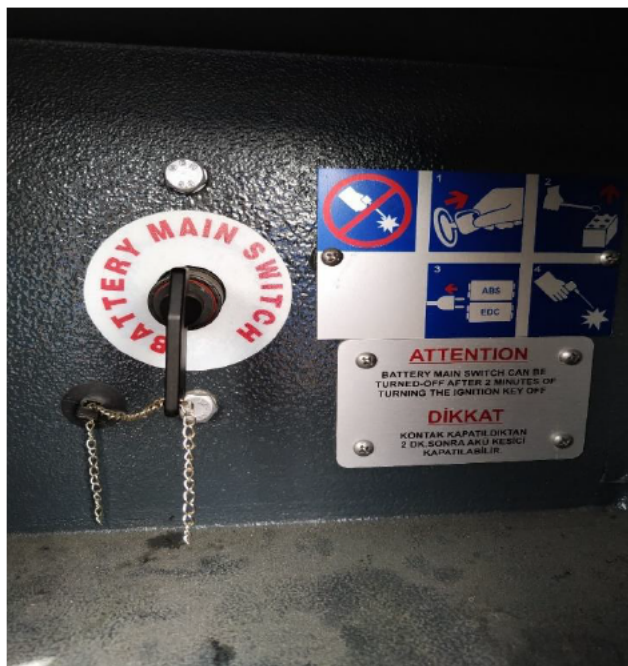


**\*\*As mentioned in number 2, if the knob part is mounted to the wrong surface, follow the instructions below.**

## TECHNICAL INSTRUCTIONS

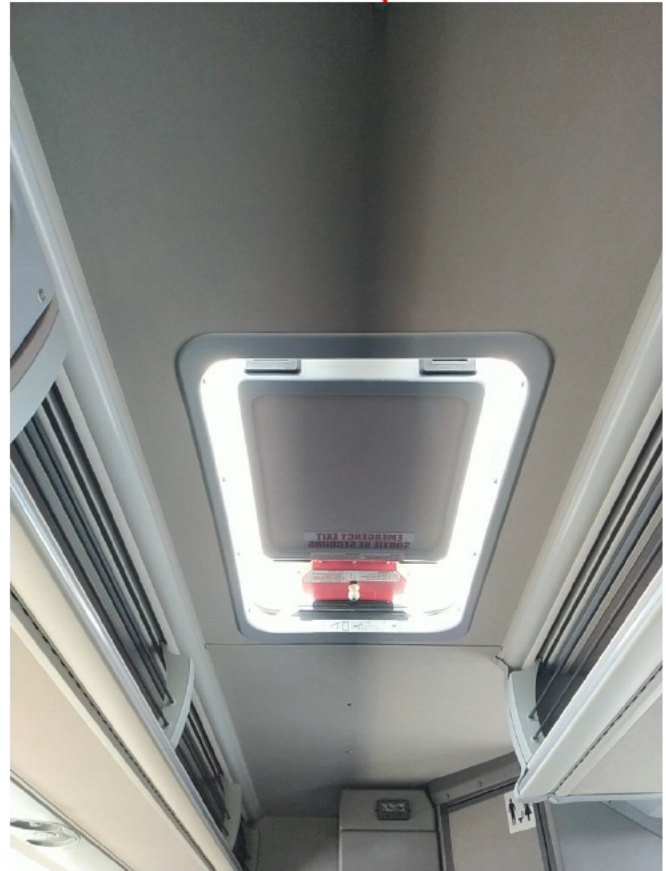
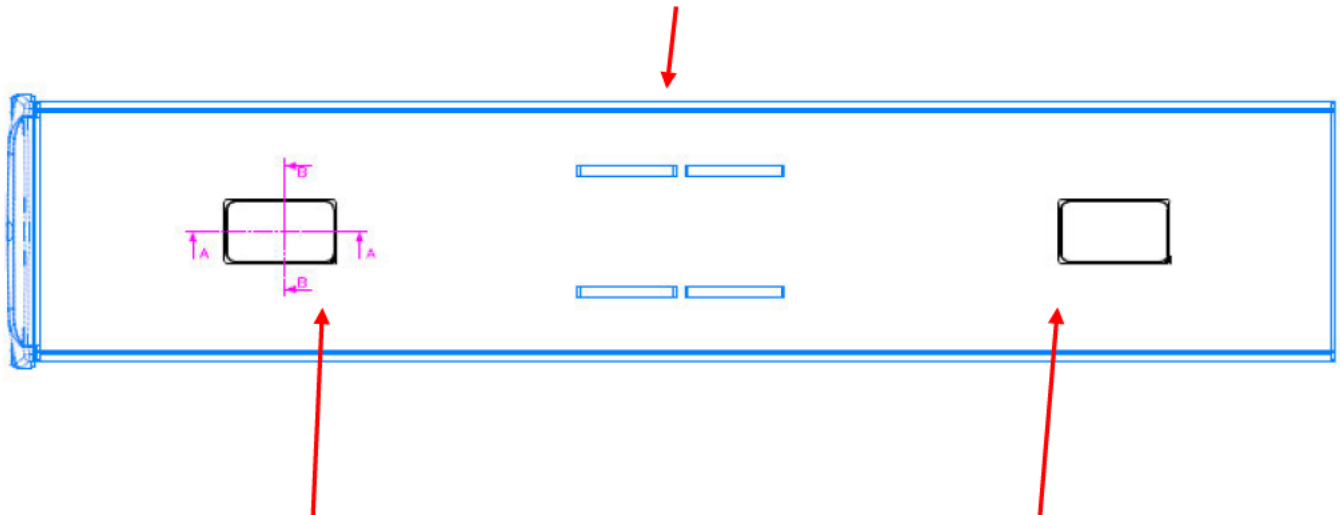
1-Follow the instructions below;

- a) Take the vehicle for service and turn off the engine.
- b) Make sure you turn off the vehicle's breaker before starting the process.



2- There are 2 emergency exit mechanisms on the roof of the vehicle. Apply the replacement procedures for both parts.

VEHICLE ROOF



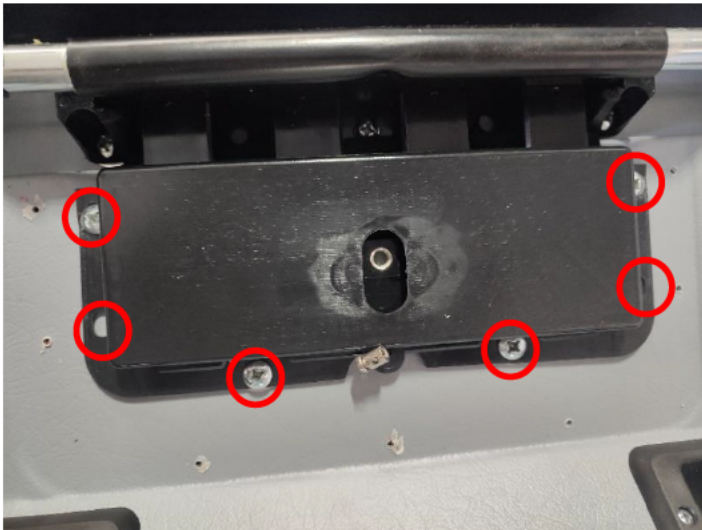
3- Remove a total of 7 screws on the cover with a number 2 Phillips head drill.



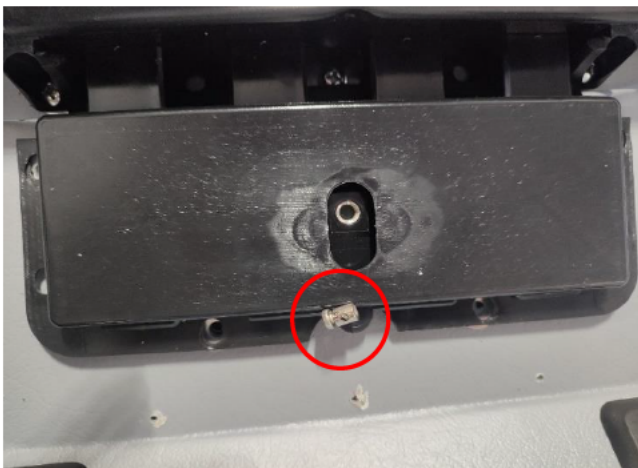
4- After removing the screws, remove the cover.



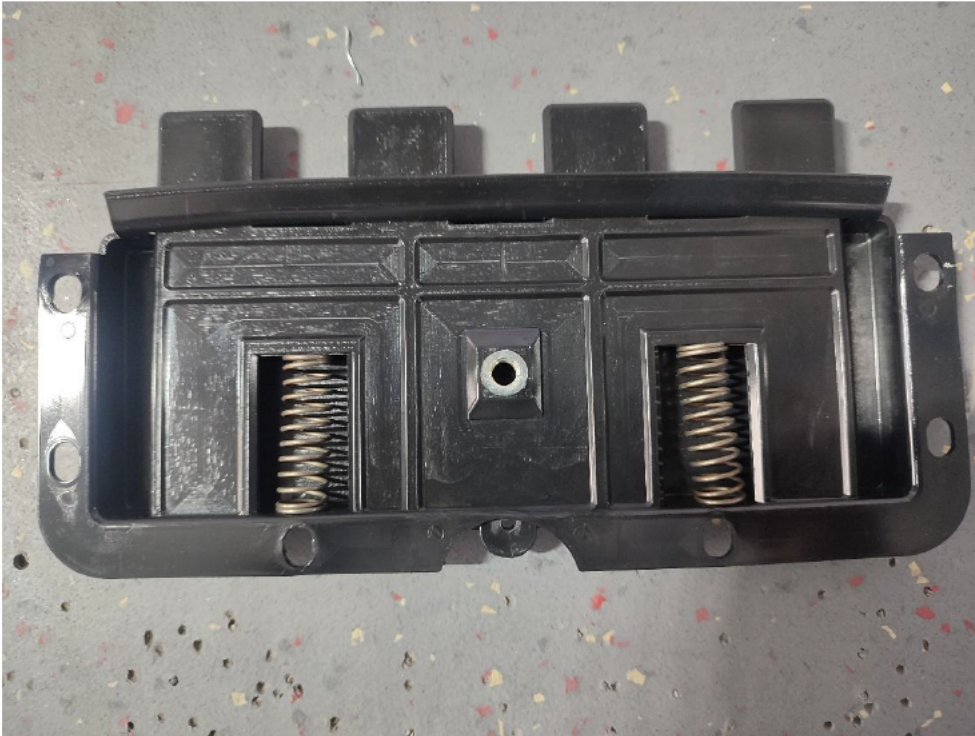
5- Remove the bolts in the marked area on the lock mechanism using the same charged screwdriver.



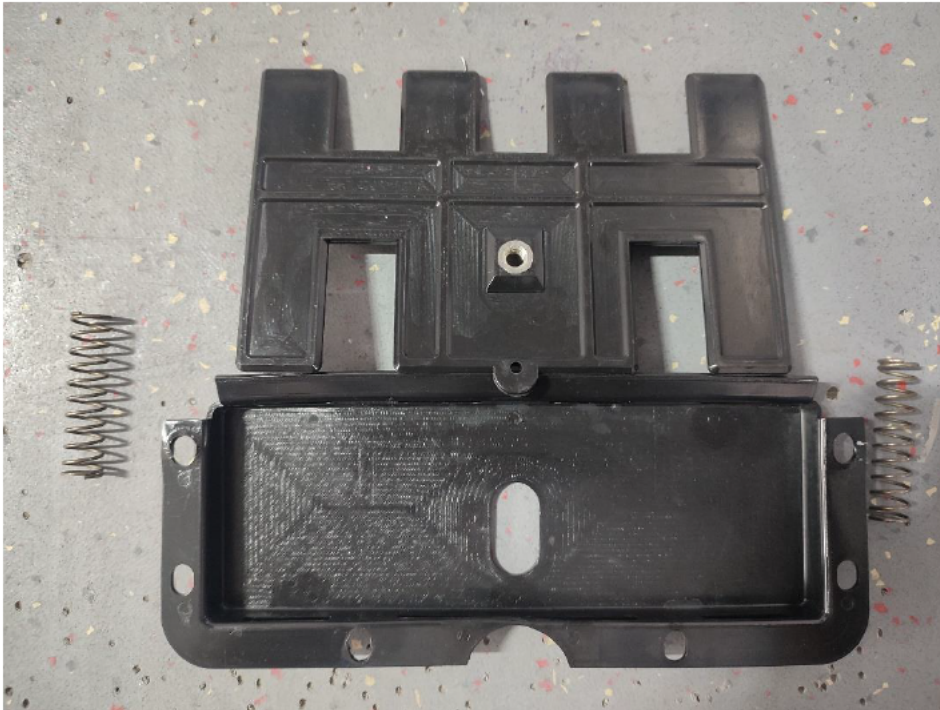
6- The nut on the rope is removed and the wire is removed from the mechanism.



7- Turn the mechanism over and remove the springs.



8- Turn the part to the appropriate surface and perform the assembly steps in the reverse direction of the disassembly process.



**\*\*Follow the assembly instructions in reverse order of the disassembly instructions.**

## **HAND TOOLS USED**

### **1) Cordless Screwdriver**



### **2) (Number 2) Star Bit**



### **3) Side Chisel**



## AFFECTED VEHICLES LIST

NUMBER	CHASSIS LIST	COUNTRY
1		USA
2		USA
3		USA
4		USA
5		USA
6		USA
7		USA
8		USA
9		USA
10		USA
11		USA
12		USA
13		USA
14		USA
15		USA
16		USA
17		USA
18		USA
19		USA
20		USA
21		USA
22		USA
23		USA
24		USA
25		USA
26		USA
27		USA
28		USA
29		USA
30		USA
31		USA
32		USA
33		USA
34		USA
35		USA
36		USA
37		USA
38		USA
39		USA
40		USA



**TEMSA**

# SERVICE BULLETIN

NUMBER	CHASSIS LIST	COUNTRY
41		USA
42		USA
43		USA
44		USA
45		USA
46		USA
47		USA
48		USA
49		USA
50		USA
51		USA
52		USA
53		USA
54		USA
55		USA
56		USA
57		USA
58		USA
59		USA
60		USA
61		USA
62		USA
63		USA
64		USA
65		USA
66		USA
67		USA
68		USA
69		USA
70		USA
71		USA
72		USA
73		USA
74		USA
75		USA
76		USA
77		USA
78		USA
79		USA
80		USA



**TEMSA**

# SERVICE BULLETIN

NUMBER	CHASSIS LIST	COUNTRY
81		USA
82		USA
83		USA
84		USA
85		USA
86		USA
87		USA
88		USA
89		USA
90		USA
91		USA
92		USA
93		USA
94		USA
95		USA
96		USA
97		USA
98		USA
99		USA
100		USA
101		USA
102		USA
103		USA
104		USA
105		USA
106		USA
107		USA
108		USA
109		USA
110		USA
111		USA
112		USA
113		USA
114		USA
115		USA
116		USA
117		USA
118		USA
119		USA
120		USA



TEMSA

# SERVICE BULLETIN

NUMBER	CHASSIS LIST	COUNTRY
121		USA
122		USA
123		USA
124		USA
125		USA
126		USA
127		USA
128		USA
129		USA
130		USA
131		USA
132		USA
133		USA
134		USA
135		USA
136		USA
137		USA
138		USA
139		USA
140		USA
141		USA
142		USA
143		USA
144		USA
145		USA
146		USA
147		USA
148		USA
149		USA
150		USA
151		USA
152		USA
153		USA
154		USA
155		USA
156		USA
157		USA
158		USA
159		USA
160		USA



**TEMSA**

# SERVICE BULLETIN

NUMBER	CHASSIS LIST	COUNTRY
161		USA
162		USA
163		USA
164		USA
165		USA
166		USA
167		USA
168		USA
169		USA
170		USA
171		USA
172		USA
173		USA
174		USA
175		USA
176		USA
177		USA
178		USA
179		USA
180		USA
181		USA
182		USA
183		USA
184		USA
185		USA
186		USA
187		USA
188		USA
189		USA
190		USA
191		USA
192		USA
193		USA
194		USA
195		USA
196		USA
197		USA
198		CANADA
199		CANADA
200		CANADA

## LABOR TIME

<b>Application</b>	<b>Time</b>
<b>Preparation of the vehicle and tools to be used</b>	<b>5'</b>
<b>Labor spent time per part</b>	<b>20' (*2)</b>
<b>Total labor time for 1 vehicle</b>	<b>45 minute</b>