



VEHICLE - SAFETY BULLETIN

Can-Am On-Road

APRIL 29, 2025

BULLETIN 2025-3

CAMPAIGN N° 2025-0003

! WARNING

All involved customers must be notified, all involved units must be corrected as per instruction herein.

High Voltage Battery Housing Not Properly Sealed from Breather Valve - Risk of Loss of Power and Risk of Fire

IMPORTANT

What should you do?

- Do not sell or deliver any involved vehicle or accessory that you have in stock as law requires you to complete the recall service on these products before retail delivery.
- Unregistered vehicles cannot be sold until the campaign is performed.
- Contact all of your customers who purchased an affected product and inform them about this Safety Recall notice.

When receiving a vehicle for service:

- Always lookup the vehicle identification number (VIN) on the Knowledge Center to check for pending campaigns or alerts.
- Always connect the vehicle to the BRP diagnostic software (BUDS) to ensure all required updates are performed.

APPLICABILITY

MODEL YEAR	MODEL	ADMISSIBLE UNITS
2025 (Only some specific VINs)	Origin / Pulse	Go to BOSSWeb/Warranty/Campaign Monitoring to know which units in your inventory are impacted by this campaign.

PROBLEM

The breather valve may not seal properly and allow moisture or water to enter the high-voltage battery. This could lead to a vehicle

loss of power and increase the risk of a crash. Over time, this could also lead to a battery fire, even when the vehicle is not being driven. These conditions could increase the risk of injury or even death.



SOLUTION

Install the new protection plate that includes a rubber stopper which pushes on the breather valve, ensuring proper sealing with the battery housing.

REQUIRED PARTS

Order the parts through the regular channel.

Parts will gradually be available starting May 1st for North America, and May 8th for all other regions.

PART NUMBER	DESCRIPTION
219800629	Protection Plate Assembly Kit



CORRECTIVE ACTION

⚠ WARNING

Make sure the motorcycle is safe for work and deactivated using the appropriate deactivation level prior to parts installation.

Refer to the [EV BEST SHOP PRACTICES GUIDE](#) for complete information on the vehicle deactivation classification and safe working procedure.

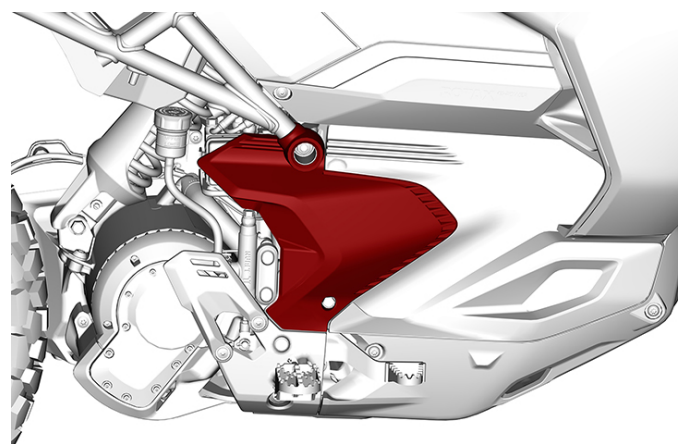
1. If the vehicle was exposed to water level above footpegs and if the breather valve has to be replaced because it has moved (as described below in bulletin), open a Technical Service

Case on BOSSWeb for further instructions. In the technical case, questions will be asked about the vehicle water exposure situation.

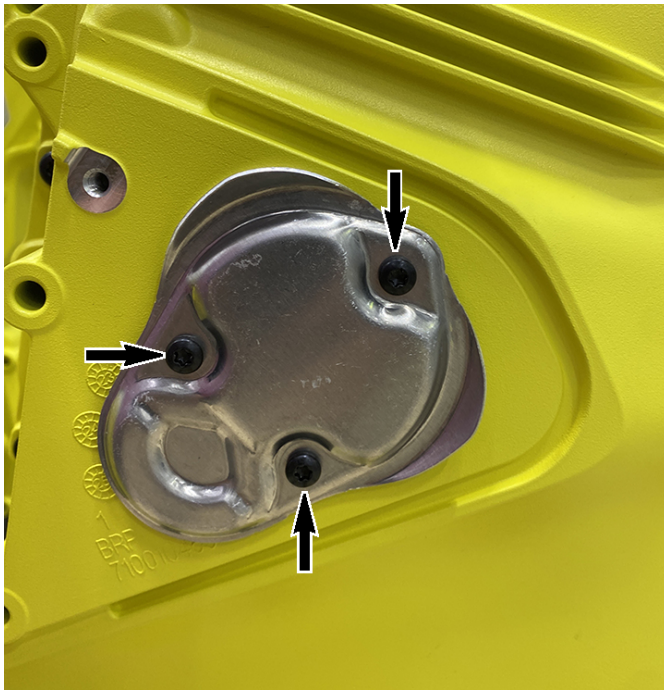
2. Remove key if installed.
3. Manipulate all new components carefully to provide proper sealing and avoid any contaminants entering the battery housing.
4. Remove RH lower body panel. Unclip the rear section, unclip from the upper tube, then slide forward to remove.

✎ NOTE

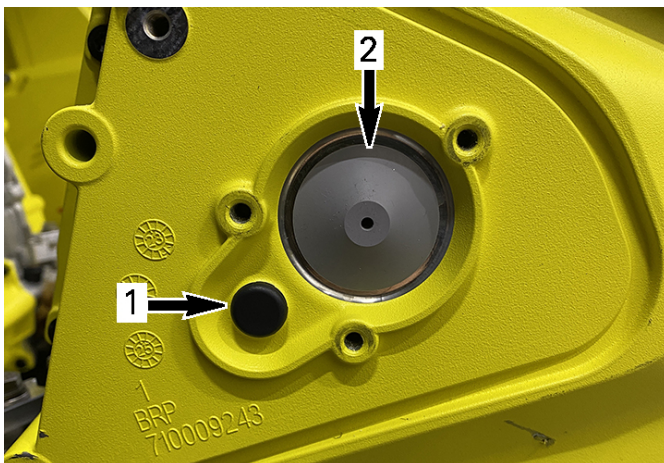
There are plates on both sides therefore be careful to remove only on the RH side.



5. Remove and keep the three retaining screws (T25) holding the protection plate. Gently remove and discard the plate.



6. Verify if the breather valve has been dislodged from its position.



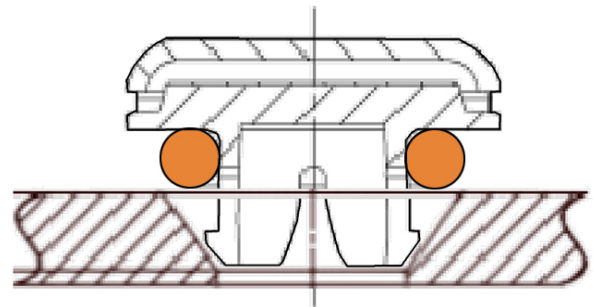
1. Breather valve
2. Umbrella valve, DO NOT TOUCH

7. If the breather valve has moved, even slightly, or if the orange O-ring is visible replace the breather valve with a new one included in kit.

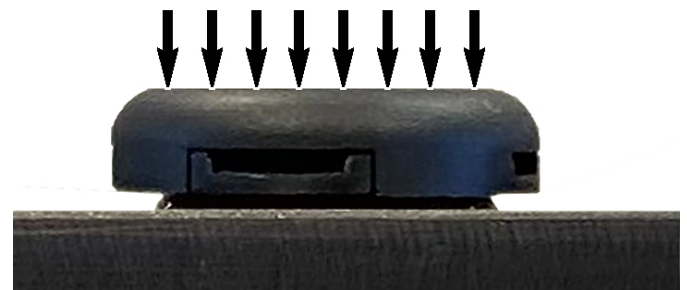
NOTE

Only if the breather valve needs to be replaced, ensure to clean the breather hole by hand using a clean dry microfiber. Do not use pressurized air or any cleaning products. Make sure it is clean before installing the breather to avoid introducing any debris or water inside the battery housing. The breather valve must be free of contaminants to properly seal when inserted.

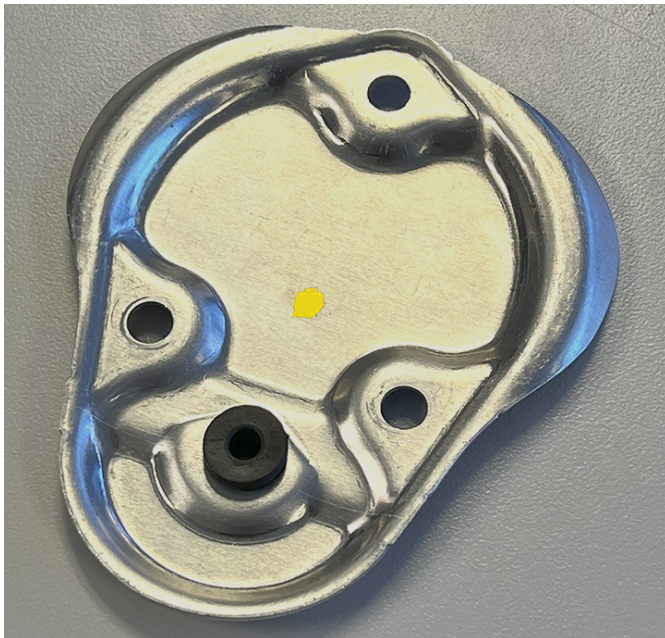
8. Align the breather valve centered and flat over the opening until the O-ring touches the chamfered inside of the opening evenly all around.



9. Apply pressure evenly using your thumb until it is completely inserted, then continue maintaining pressure for 1 second.



10. On the new protection plate, verify if the stopper grommet is properly installed. It must hold in place and installed inside the plate as indicated by a painted dot or a dimple embossment.



**PLATE INTERNAL SIDE SHOWN - SHOWS YELLOW DOT
AND STOPPER GROMMET RECESSED SIDE**

11. The dart should come out completely on the opposite side.

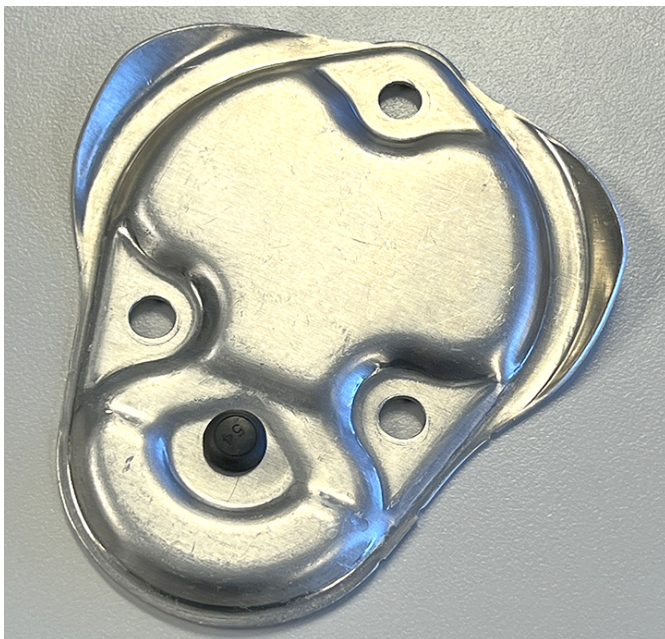


PLATE EXTERNAL VIEW - DART SHOWN

12. Properly orient and install plate and secure with previously removed screws. The recess in the protection plate should be aligned with the breather valve.
13. Start screwing the screws by hand.

NOTICE

All 3 screws should be engaged by hand before to start tightening to make sure the battery housing does not get damaged.

NOTE

The stopper grommet will apply a slight pressure on the breather valve to maintain it in position.

14. Tighten to specification.

TIGHTENING TORQUE

Protection Plate Screws (T25)	4 N•m ± 0.25 N•m (36 lbf•in ± 2 lbf•in)
----------------------------------	--



AFTER NEW PLATE IS INSTALLED

15. Reinstall previously removed RH lower body panel.
16. Connect to BUDS3 and check for any faults, especially isolation fault. If a high voltage battery fault occurred, please open a Technical Service Case on BOSSWeb and wait for further instructions.

WARRANTY

Submit a warranty claim using the following information.

For claiming procedure, refer to the online *Dealer/Distributor Warranty Guide*.



CLAIM DETAILS	
Product Line	Motorcycle
Unit Model Year	2025
Campaign/Bulletin/Description	3 / 2025-3 / HV Battery Breather Valve
<div> <div>*Action</div> <div> <div>Inspect</div> <div>Repair</div> </div> </div>	
Total Labor Time Paid	0.3 hour

CLAIM DETAILS	
Claim Type	Unit Campaign
Serial Number	Enter Serial Number
Warranty Campaign	Select <i>HV Battery Breather Valve / BULLETIN 2025-3 / 2WV-2025-0003</i> from the drop-down list
Date of Repair	Repair date
Total Labor Time Paid	0.3 hour