



Recall Service Bulletin



**Recall Service Bulletin
RSB26-900-001**

DATE: 1/23/2026

APPLIES TO: This service bulletin applies to certain model year 2021-2023, 2025 Legend, 2007, 2015-2026 Star Series, and 2019-2020 UST Body model emergency response vehicles built between March 29, 2016 and November 11, 2025.

NHTSA/TC Id: 25V910/TC2025-720

CONDITION: The ladder lock handle assembly attached to the ladder bracket assembly may have been installed incorrectly. This may result in the handle becoming detached from the thread rod.

CORRECTION: Inspect current assembly and reassemble as instructed.

LABOR ALLOCATION: 0.5 hour inspection/ 0.5 hour repair

CLASSIFICATION: E3

PARTS NEEDED:

<u>QTY</u>	<u>Part Number</u>	<u>Description</u>
2	2-70900-030	Threaded Rod Assy
1	Loctite 271/equivalent	Red Thread Locker
2	2-55000-005	Handle Ladder Lock
	or	
2	2-55000-234	Handle Ladder Lock - D

Service Bulletins are intended for use by Professional Technicians only. They are written to guide Professional Technicians in performing service to vehicles of specific nature in conjunction with industry standards. Professional Technicians should be appropriately trained on industry standards and have the tools and equipment to perform procedures safely and properly.



Recall Service Bulletin



Recall Service Bulletin
RSB26-900-001

GENERAL INSTRUCTIONS:

Thoroughly review entire service bulletin before starting work. If there are questions or concerns with steps defined in this service bulletin, contact Spartan Fire, LLC. Customer & Product Support Group (1-800-867-6478)

All applicable industry safety standards must be followed when performing work identified in this procedure.

STEP-BY-STEP INSTRUCTIONS

- 1) Locate the Ladder Lock bracket and handle assembly. It will either be on the side of the apparatus body or mounted to the ladder rack.



Service Bulletins are intended for use by Professional Technicians only. They are written to guide Professional Technicians in performing service to vehicles of specific nature in conjunction with industry standards. Professional Technicians should be appropriately trained on industry standards and have the tools and equipment to perform procedures safely and properly.



Recall Service Bulletin

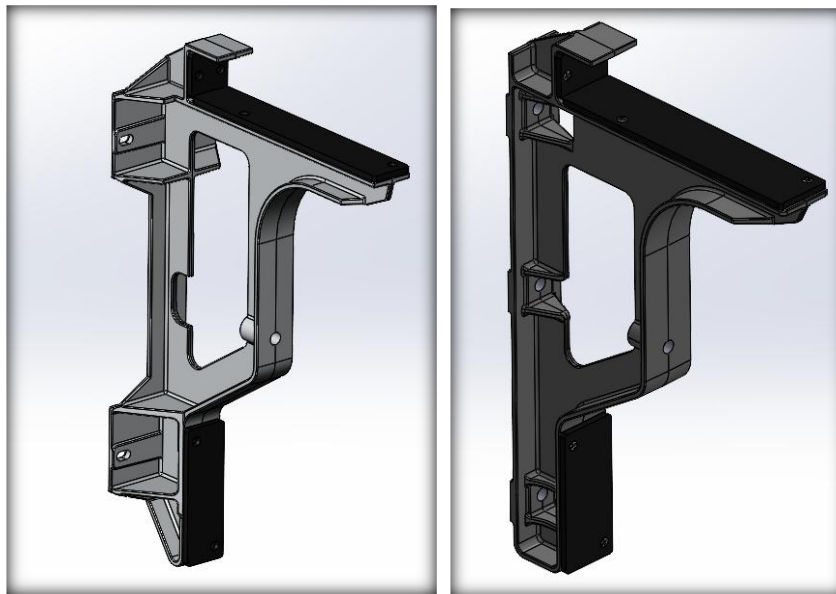


Recall Service Bulletin
RSB26-900-001



- 2) Remove the ladders from the brackets. The brackets may be a Cast Aluminum Bracket or a Fabricated Aluminum Bracket.

Example of Cast Aluminum Brackets



Service Bulletins are intended for use by Professional Technicians only. They are written to guide Professional Technicians in performing service to vehicles of specific nature in conjunction with industry standards. Professional Technicians should be appropriately trained on industry standards and have the tools and equipment to perform procedures safely and properly.

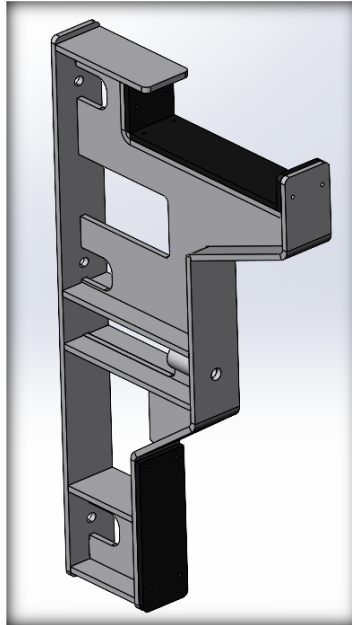


Recall Service Bulletin



Recall Service Bulletin
RSB26-900-001

Example of Fabricated Aluminum Bracket



- 3) Remove the handle from the threaded rod and measure the amount of threads that were inserted into the cast aluminum handle. There should be a minimum of 3/4" of thread engagement.
 - a. If there is 3/4 " thread engagement, screw the handle back onto the threaded rod with Red Loctite.
 - b. If there is less than 3/4" of thread engagement, proceed to Step 4.
 - c. Also, check the nut on the opposite end of the rod. If it is a nyloc nut, leave as is. If it is a standard nut, add Red Loctite.

Contact Spartan Fire, LLC. Customer & Product Support Group (1-800-867-6478) and report results/findings from step 3a/3b.

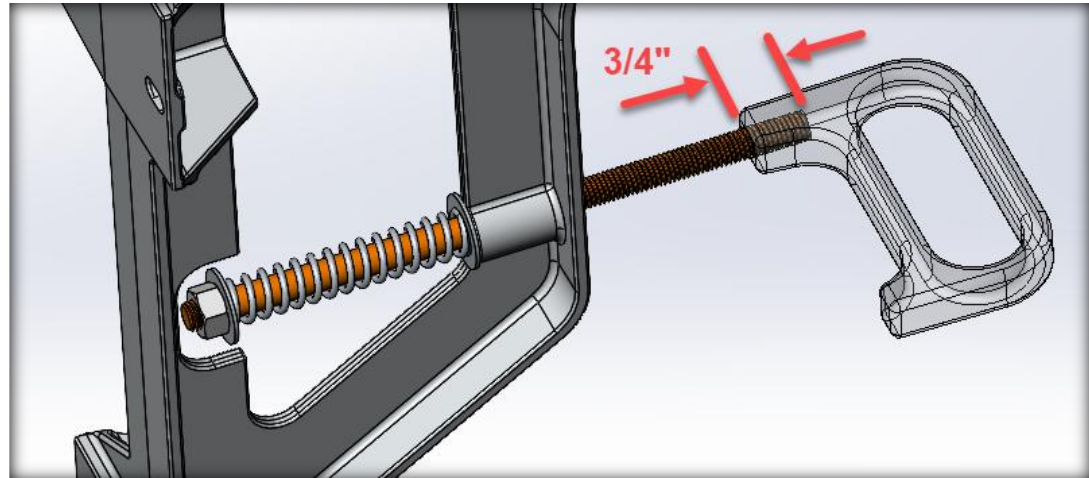
Service Bulletins are intended for use by Professional Technicians only. They are written to guide Professional Technicians in performing service to vehicles of specific nature in conjunction with industry standards. Professional Technicians should be appropriately trained on industry standards and have the tools and equipment to perform procedures safely and properly.



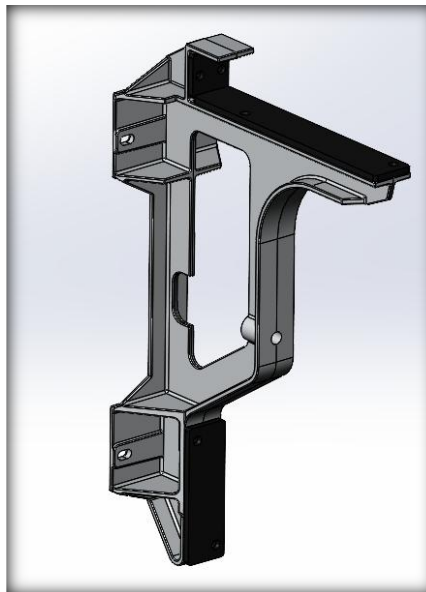
Recall Service Bulletin



Recall Service Bulletin
RSB26-900-001



- 4) Remove the threaded rod assembly from the bracket.



Service Bulletins are intended for use by Professional Technicians only. They are written to guide Professional Technicians in performing service to vehicles of specific nature in conjunction with industry standards. Professional Technicians should be appropriately trained on industry standards and have the tools and equipment to perform procedures safely and properly.



Recall Service Bulletin



Recall Service Bulletin RSB26-900-001

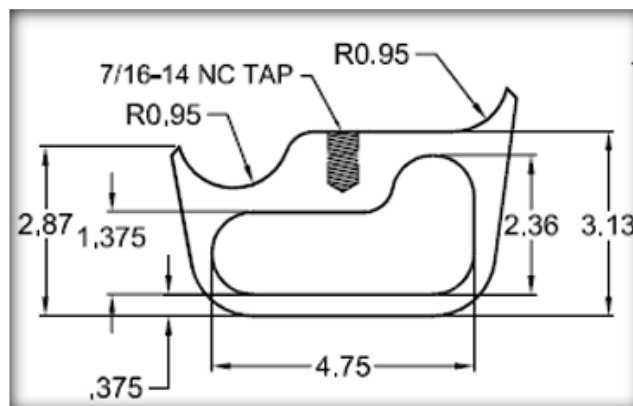
- 5) Observe the first few threads inside the cast aluminum handle. Are they chipped or cracked?

Example of threads in good condition:



- 6) If the threads in the handle are damaged, contact Rev Fire Parts to get the correct style of handle that matches the handle style on your apparatus.

PN: 2-55000-005



Service Bulletins are intended for use by Professional Technicians only. They are written to guide Professional Technicians in performing service to vehicles of specific nature in conjunction with industry standards. Professional Technicians should be appropriately trained on industry standards and have the tools and equipment to perform procedures safely and properly.

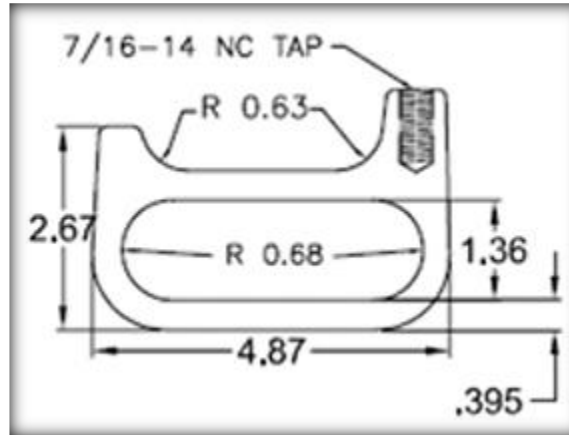


Recall Service Bulletin

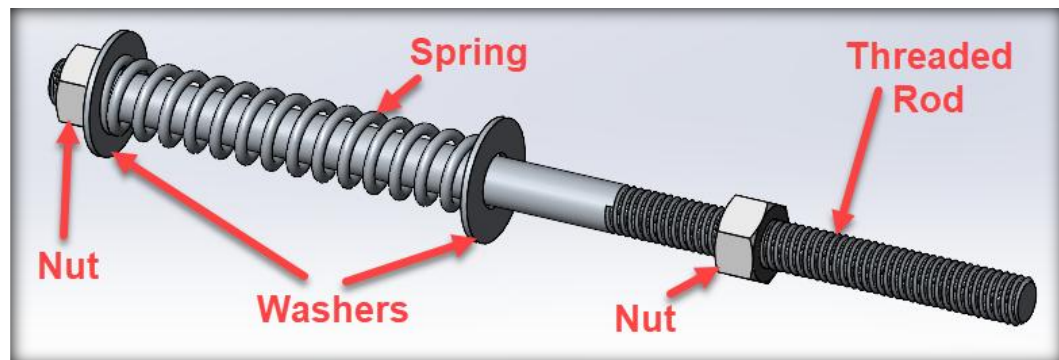


Recall Service Bulletin
RSB26-900-001

PN: 2-55000-234



- 7) Reinstall the ladder handle hardware as follows:
 - a. Remove the 2 nuts, 2 washers and spring from PN: 2-70900-030 Threaded Rod Assy



Service Bulletins are intended for use by Professional Technicians only. They are written to guide Professional Technicians in performing service to vehicles of specific nature in conjunction with industry standards. Professional Technicians should be appropriately trained on industry standards and have the tools and equipment to perform procedures safely and properly.

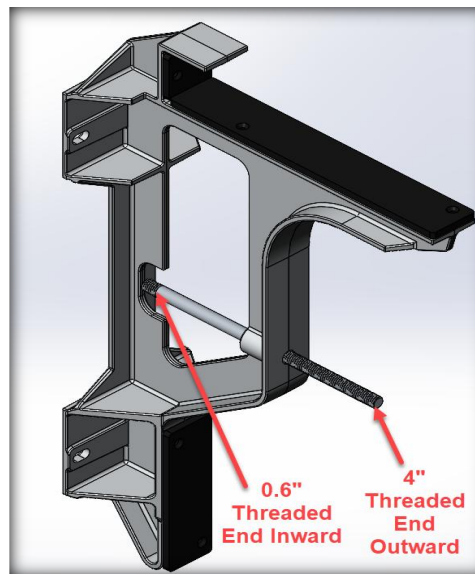


Recall Service Bulletin

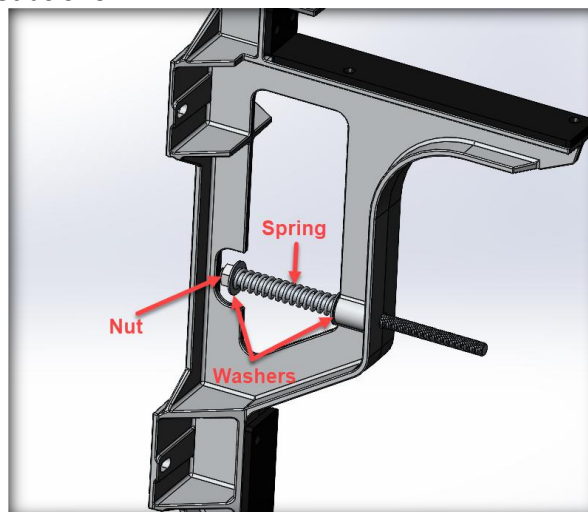


Recall Service Bulletin RSB26-900-001

- b. Insert the threaded rod into the ladder bracket so the end of the rod with 4" of threads is pointing outward.



- c. Install a washer, the spring, the other washer, and lastly the nut on the inboard side of the bracket as shown:



Service Bulletins are intended for use by Professional Technicians only. They are written to guide Professional Technicians in performing service to vehicles of specific nature in conjunction with industry standards. Professional Technicians should be appropriately trained on industry standards and have the tools and equipment to perform procedures safely and properly.

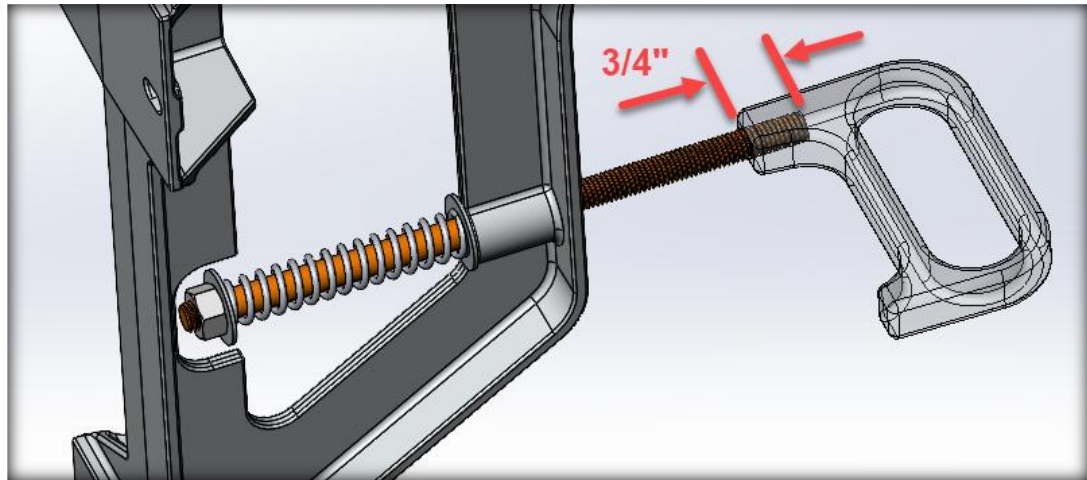


Recall Service Bulletin



Recall Service Bulletin
RSB26-900-001

- d. Screw the handle onto the threaded rod as far as possible (minimum of $\frac{3}{4}$ " of thread engagement).



- e. There will be 1 nut remaining from PN: 2-70900-030. Discard that nut as it is not needed.
- f. Install the ladders back onto the brackets and attempt to lock the ladders in place. If the handle is tightly securing the ladders and they are braced against the brackets, proceed to Step 7g. If the handles are **not** tightly securing the ladders, proceed to Step 8.
- i. Typically for a ladder combination consisting of a single Duo Safety 24' 2 Section Ladder and a single Duo Safety 14' Roof Ladder on Fabricated Aluminum Brackets, the rod doesn't need to be modified.
- g. Remove the ladders from the brackets.

Service Bulletins are intended for use by Professional Technicians only. They are written to guide Professional Technicians in performing service to vehicles of specific nature in conjunction with industry standards. Professional Technicians should be appropriately trained on industry standards and have the tools and equipment to perform procedures safely and properly.

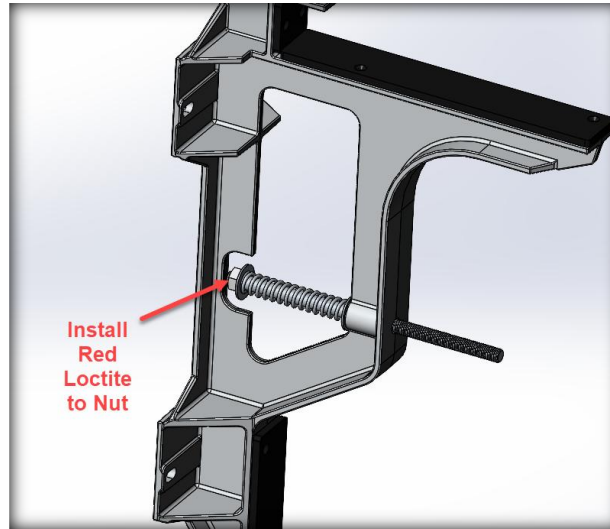


Recall Service Bulletin

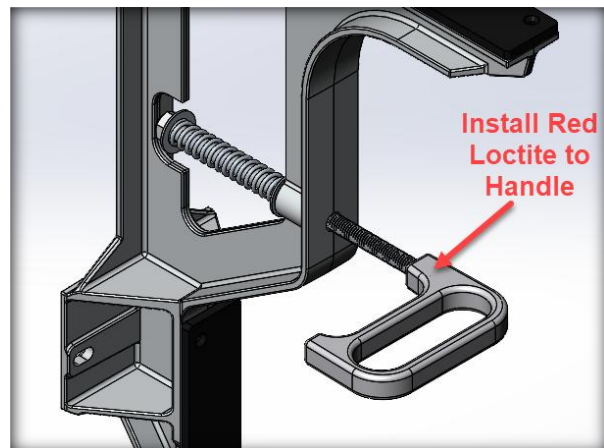


Recall Service Bulletin RSB26-900-001

- h. Remove the nut from the assembly. Apply red Loctite and reinstall the nut.



- i. Remove the handle from the assembly. Apply red Loctite and reinstall the handle ensuring there is at least $\frac{3}{4}$ " of thread engagement.



Service Bulletins are intended for use by Professional Technicians only. They are written to guide Professional Technicians in performing service to vehicles of specific nature in conjunction with industry standards. Professional Technicians should be appropriately trained on industry standards and have the tools and equipment to perform procedures safely and properly.

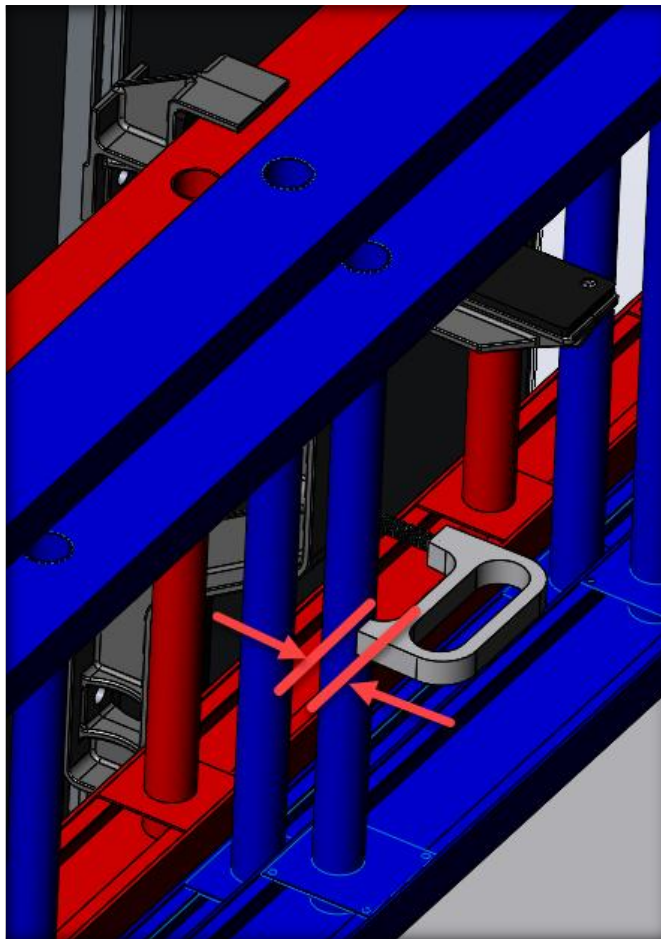


Recall Service Bulletin



Recall Service Bulletin
RSB26-900-001

- 8) If the threaded rod needs to be modified for proper securement of the ladders, proceed as follows:
 - a. Ensure the ladders are compressed as tight as possible on the ladder brackets.
 - b. Measure the distance between the ladder lock handle and the rung of the ladder and add another $\frac{1}{2}$ " to that dimension. This value will be needed in Step 8e.



Service Bulletins are intended for use by Professional Technicians only. They are written to guide Professional Technicians in performing service to vehicles of specific nature in conjunction with industry standards. Professional Technicians should be appropriately trained on industry standards and have the tools and equipment to perform procedures safely and properly.

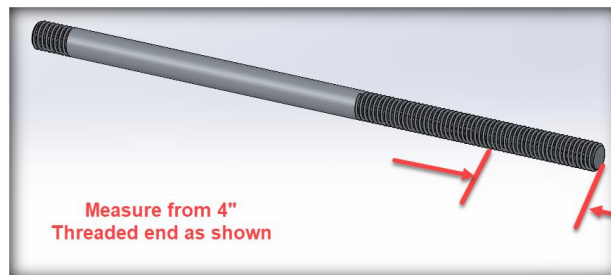


Recall Service Bulletin

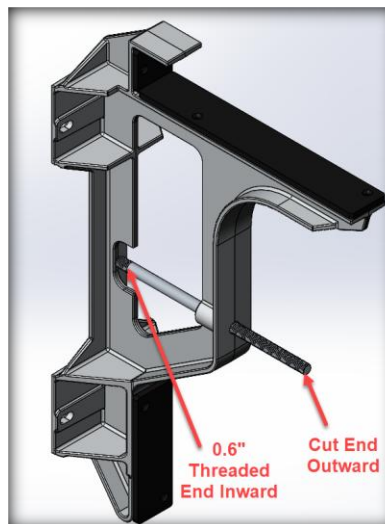


Recall Service Bulletin RSB26-900-001

- c. Remove the ladders from the ladder brackets.
- d. Remove the handle, 2 washers, spring, and nut from the assembly.
- e. Cut off the dimension determined in step 8b from the 4" long threaded end of the rod.
 - i. Typically for a ladder combination consisting of a single Duo Safety 24' 2 Section Ladder and a single Duo Safety 14' Roof Ladder on Cast Aluminum Brackets, approx. 1.75" is cut off the rod.



- f. Insert the threaded rod into the ladder bracket so the end of the rod that was cut protrudes outward.



Service Bulletins are intended for use by Professional Technicians only. They are written to guide Professional Technicians in performing service to vehicles of specific nature in conjunction with industry standards. Professional Technicians should be appropriately trained on industry standards and have the tools and equipment to perform procedures safely and properly.

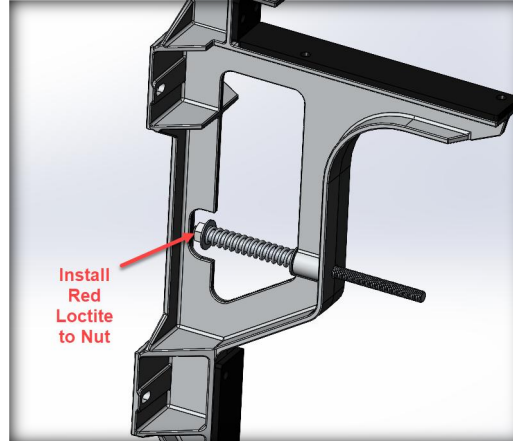


Recall Service Bulletin

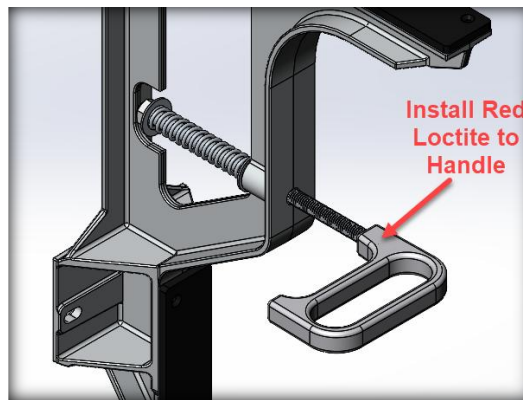


Recall Service Bulletin
RSB26-900-001

- g. Install a washer, the spring, the other washer, and lastly the nut on the inboard side of the bracket as shown. Ensure that red Loctite is used to secure the nut in place.



- h. Screw the handle onto the threaded rod as far as possible (minimum of $\frac{3}{4}$ " of thread engagement). Ensure red Loctite is used to secure the handle in place.



- i. Install the ladders back onto the brackets and lock the ladders in place. The handle should tightly secure the ladders to the brackets.

Service Bulletins are intended for use by Professional Technicians only. They are written to guide Professional Technicians in performing service to vehicles of specific nature in conjunction with industry standards. Professional Technicians should be appropriately trained on industry standards and have the tools and equipment to perform procedures safely and properly.