



# HYUNDAI Technical Service Bulletin

GROUP <b>RECALL</b>	NUMBER <b>26-01-037H</b>
DATE <b>APRIL 2026</b>	MODEL(S) <b>SEE BELOW</b>

**SUBJECT:** TOW HITCH HARNESS – INSPECTION, REMOVAL, AND DUST CAP INSTALLATION (RECALL 290)

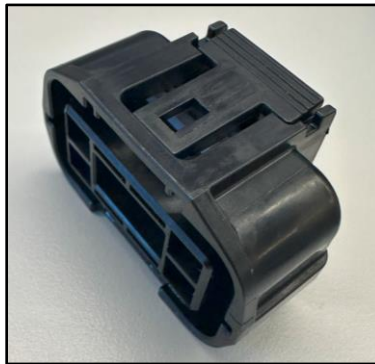
## ★ IMPORTANT

Vehicle repairs related to safety recalls are critically important and must be performed properly in accordance with TSB procedures. Review this bulletin in its entirety prior to beginning any repair work.

As required by federal law, dealers must not deliver new vehicles for sale or for lease to customers until all open recalls have been performed. Dealers must also perform all open recalls on used vehicles, demo, and rental vehicles prior to placing them into customer use and whenever an affected vehicle is in the shop for any maintenance or repair.

Access the “Vehicle Information” screen via WebDCS to identify open recalls.

**Description:** Certain Tucson (NX4, NX4A), Tucson Hybrid (NX4 HEV), and Tucson Plug-in Hybrid (NX4 PHEV) vehicles may be equipped with a genuine factory Hyundai tow hitch harness that is susceptible to water intrusion. Water entering the tow hitch harness may cause trailer lamps or vehicle stop lamps to become inoperative. In rare cases, an internal electrical short may occur, which could result in overheating, or melting. This bulletin provides instructions to inspect and, if applicable, remove the genuine factory Hyundai trailer wiring harness accessory and install a dust cap to prevent water intrusion.

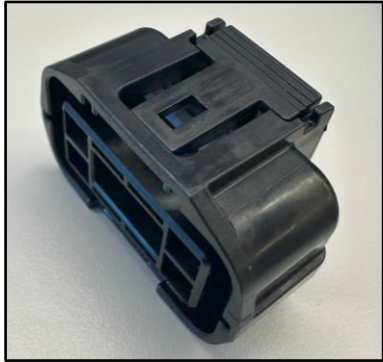


### Applicable Vehicles (Certain):

Model Year	Model	Production Dates
2022 – 2024	Tucson (NX4)	02/26/2021 - 04/30/2024
	Tucson (NX4A)	02/25/2021 - 08/21/2024
	Tucson Hybrid (NX4 HEV)	02/08/2021 - 07/01/2024
	Tucson Plug-in Hybrid (NX4 PHEV)	08/12/2021 - 07/17/2024

Circulate To: General Manager, Service Manager, Parts Manager, Warranty Manager, Service Advisors, Technicians, Body Shop Manager, Fleet Repair

**SUBJECT:**TOW HITCH HARNESS – INSPECTION, REMOVAL,  
AND DUST CAP INSTALLATION (RECALL 290)**Parts Information:**

Model	Part Name	Part Number	Figure	Quantity
Tucson (NX4/NX4A)	Dust Cap	GZ095-12021		1
Tucson Hybrid (NX4 HEV)				
Tucson Plug-in Hybrid (NX4 PHEV)				

**Warranty Information:**

Model	Op. Code	Operation	Op. Time	Causal Part	Nature Code	Cause Code
Tucson (NX4/NX4A)	REC290I0	Genuine Factory Hyundai Tow Hitch Harness Inspection	0.2 M/H	CWF61-AU100	I11	ZZ3
Tucson Hybrid (NX4 HEV)	REC290R0	Genuine Factory Hyundai Tow Hitch Harness Removal and Dust Cap Installation	0.3 M/H			
Tucson Plug-in Hybrid (NX4 PHEV)						

**NOTE 1:** Submit claim on Claim Entry Screen as “Campaign” type.

**NOTE 2:** If any part(s) not subject to this TSB are found in need of replacement while performing the repair procedure, and the affected part(s) are still under warranty, the dealer may submit a separate claim using the same repair order. If the part(s) not subject to this TSB are out of warranty coverage, the dealer has the option to submit a Prior Approval (PA) Request for goodwill consideration on a case-by-case basis.

**NOTE 3:** This TSB includes repair validation photos. Op times include VIN, mileage, and repair validation photo(s) as outlined in the Digital Documentation Policy.

**SUBJECT:**

TOW HITCH HARNESS – INSPECTION, REMOVAL,  
AND DUST CAP INSTALLATION (RECALL 290)

**Service Procedure:**

**DIGITAL DOCUMENTATION**



This TSB includes repair validation photos. Refer to the latest Warranty Digital Documentation Policy for requirements.

**NOTICE**

Applying the recommended torque to all fasteners is essential to reduce potential issues from occurring after the service procedure.

**Table of Contents**

- Tow Hitch Harness Inspection .....4
- Tow Hitch Harness Removal and Dust Cap Installation .....5

**SUBJECT:****TOW HITCH HARNESS – INSPECTION, REMOVAL,  
AND DUST CAP INSTALLATION (RECALL 290)****Tow Hitch Harness Inspection**

1. Visually inspect the rear center lower bumper for a tow hitch harness:

- Tow hitch harness present
  - Proceed to [Tow Hitch Harness Removal and Dust Cap Installation](#) section.
- Tow hitch present, but **NO** tow hitch harness
  - Proceed to **step 2**.
- **NO** tow hitch present
  - Proceed to **step 2**.



2.

**DIGITAL  
DOCUMENTATION**



Using the STUI camera function, take a photo of the tow hitch area.

Upload the photo to STUI.

**NOTE:** If the STUI camera function is **NOT** used, write the last 6 digits of the VIN and the date of repair on a piece of paper to include in the photo.



3. The service procedure is now complete.

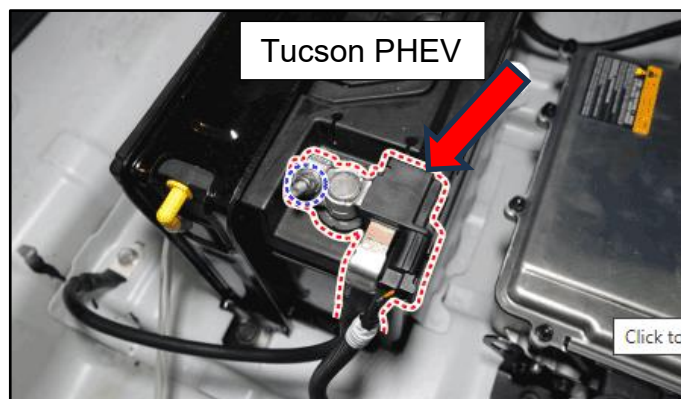
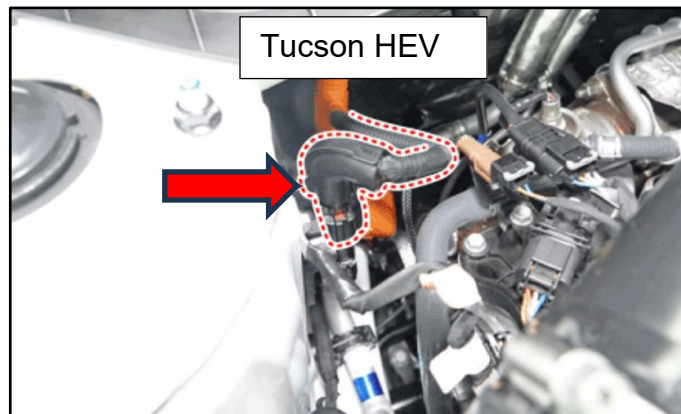
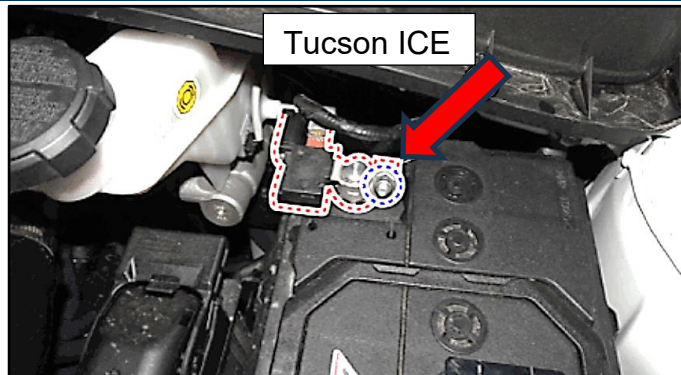
**SUBJECT:****TOW HITCH HARNESS – INSPECTION, REMOVAL,  
AND DUST CAP INSTALLATION (RECALL 290)****Tow Hitch Harness Removal and Dust Cap Installation**

1. Disconnect the battery.

Model	Remove Part	Location
ICE	– Terminal	Engine bay
HEV	+ Connector	Upper engine bay near passenger strut mount
PHEV	– Terminal	Tailgate area underneath luggage mat

**Tightening Torque:**

lb-ft	7.2
lb-in	86
N.m	8.8



**SUBJECT:****TOW HITCH HARNESS – INSPECTION, REMOVAL,  
AND DUST CAP INSTALLATION (RECALL 290)**

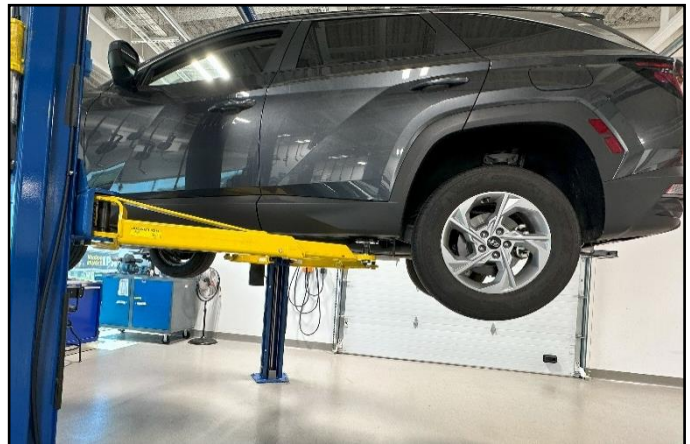
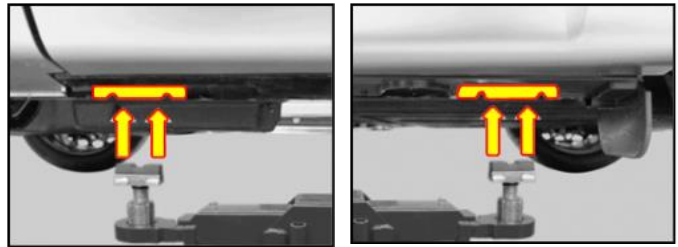
2. Visually check that the lift blocks are properly seated on the vehicle support points and raise the vehicle.

**NOTICE**

Raising the vehicle from anywhere other than the support points may damage vehicle components.

Refer to the shop manual:

- **General Information > Lift and Support Points > General Information**



3. Locate the tow hitch harness tag to ensure it is a genuine factory Hyundai part (**CWF61-AU100**):

- If it is a genuine factory Hyundai part, then proceed to **step 5**.
- If it is **NOT** a genuine factory Hyundai part, proceed to **step 4**, put vehicle back together, and complete the service procedure.



4.

**DIGITAL DOCUMENTATION**



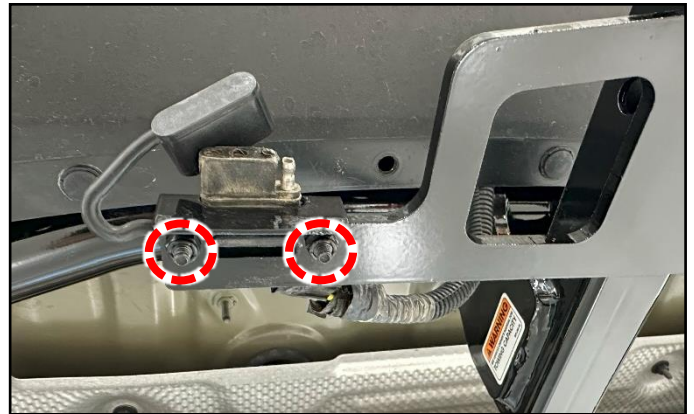
Using the STUI camera function, take a photo of the non genuine factory Hyundai tow hitch harness.

Upload the photo to STUI.

**NOTE:** If the STUI camera function is **NOT** used, write the last 6 digits of the VIN and the date of repair on a piece of paper to include in the photo.



5. Remove the **two 10mm nuts**, then remove the **4-pin** tow hitch harness bracket from the tow hitch.



6. Put the nuts and harness bracket into a bag and place the bag in the customer's glove box.

**i Information**

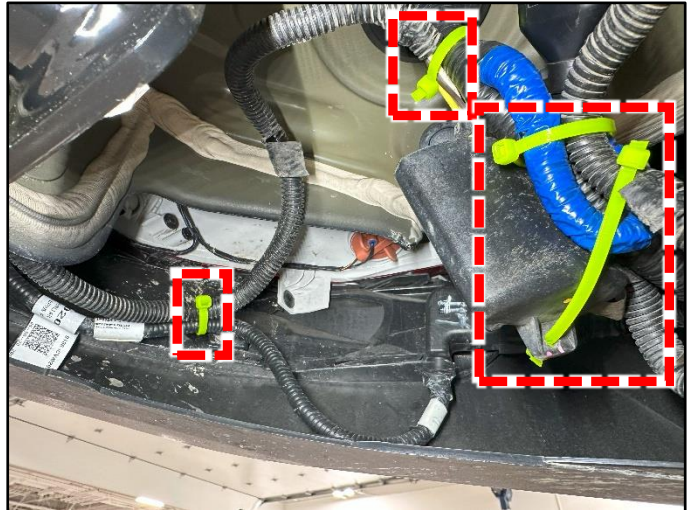
Inform the customer of the hardware placed in the glovebox. This hardware will be reused when a countermeasure part becomes available.



**SUBJECT:**

**TOW HITCH HARNESS – INSPECTION, REMOVAL,  
AND DUST CAP INSTALLATION (RECALL 290)**

7. Remove all the zip ties that are holding the tow hitch harness in place.



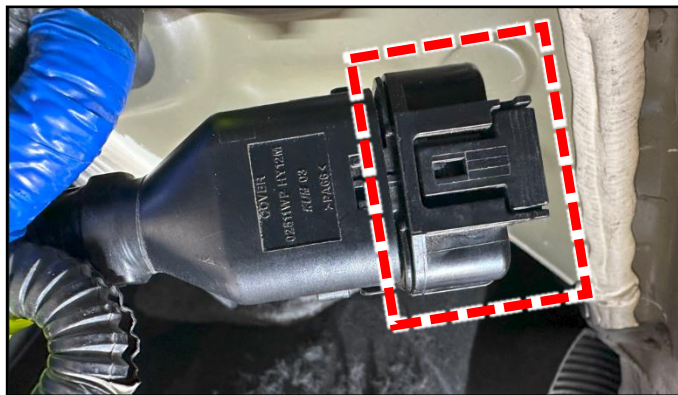
8. Disconnect the tow hitch harness from the prewire of the vehicle.



**SUBJECT:**

**TOW HITCH HARNESS – INSPECTION, REMOVAL,  
AND DUST CAP INSTALLATION (RECALL 290)**

9. Install the dust cap onto the tow hitch harness prewire.



10. Use a new zip tie to secure the prewire on the vehicle frame rail clip as shown.



- 11.

**DIGITAL  
DOCUMENTATION**



Using the STUI camera function, take a photo of the secured prewire with the installed dust cap.

Upload the photo to STUI.

**NOTE:** If the STUI camera function is **NOT** used, write the last 6 digits of the VIN and the date of repair on a piece of paper to include in the photo.



**SUBJECT:**

**TOW HITCH HARNESS – INSPECTION, REMOVAL,  
AND DUST CAP INSTALLATION (RECALL 290)**

12. Discard the removed tow hitch harness.



13. The service procedure is now complete.