



HYUNDAI
Technical Service Bulletin

GROUP RECALL	NUMBER 26-01-004H
DATE JANUARY 2026	MODEL(S) SANTA FE (MX5A) SANTA FE HYBRID (MX5A HEV)

SUBJECT: INOPERATIVE REAR-VIEW CAMERA – HARNESS REPLACEMENT (RECALL 288)

*** IMPORTANT**

Vehicle repairs related to safety recalls are critically important and must be performed properly in accordance with TSB procedures. Review this bulletin in its entirety prior to beginning any repair work.

As required by federal law, dealers must not deliver new vehicles for sale or for lease to customers until all open recalls have been performed. Dealers must also perform all open recalls on used vehicles, demo, and rental vehicles prior to placing them into customer use and whenever an affected vehicle is in the shop for any maintenance or repair.

Access the “Vehicle Information” screen via WebDCS to identify open recalls.

Description: Certain Santa Fe (MX5A) and Santa Fe Hybrid (MX5A HEV) vehicles may have a rearview camera that was improperly installed during assembly, potentially resulting in a damaged wire harness. In this condition, the rearview camera could malfunction or become inoperative. This bulletin provides instructions to replace the rear-view camera harness.




Applicable Vehicles (Certain):

Model Year	Model	Production Dates
2024 – 2025	Santa Fe (MX5A)	12/28/2023 – 01/24/2025
	Santa Fe Hybrid (MX5A HEV)	03/06/2024 – 01/29/2025

SUBJECT:

INOPERATIVE REAR-VIEW CAMERA – HARNESS
REPLACEMENT (RECALL 288)

Parts Information:

Model	Part Name	Part Number	Figure	Quantity
Santa Fe (MX5A)	Wire Extension	99247- P6000QQH		1
Santa Fe Hybrid (MX5A HEV)				

Warranty Information:

Model	Op. Code	Operation	Op. Time	Causal Part	Nature Code	Cause Code
Santa Fe (MX5A)	51DA46R0	Rear View Camera Harness Replacement	0.6 M/H	99240-P6000	B32	ZZ3
Santa Fe Hybrid (MX5A HEV)						

NOTE 1: Submit claim on Claim Entry Screen as “Campaign” type.

NOTE 2: If any part(s) not subject to this TSB are found in need of replacement while performing the repair procedure, and the affected part(s) are still under warranty, the dealer may submit a separate claim using the same repair order. If the part(s) not subject to this TSB are out of warranty coverage, the dealer has the option to submit a PA Request for goodwill consideration on a case-by-case basis.

NOTE 3: This TSB includes repair validation photos. Op times include VIN, mileage, and repair validation photo(s) as outlined in the Digital Documentation Policy.

NOTE 4: The incident parts are subject to callback through the normal Warranty Technical Center (WTC) parts return process. **Claim is subject to debit if the part is not returned.**

Service Procedure:**DIGITAL DOCUMENTATION**

This TSB includes repair validation photos. Refer to the latest Warranty Digital Documentation Policy for requirements.

NOTICE

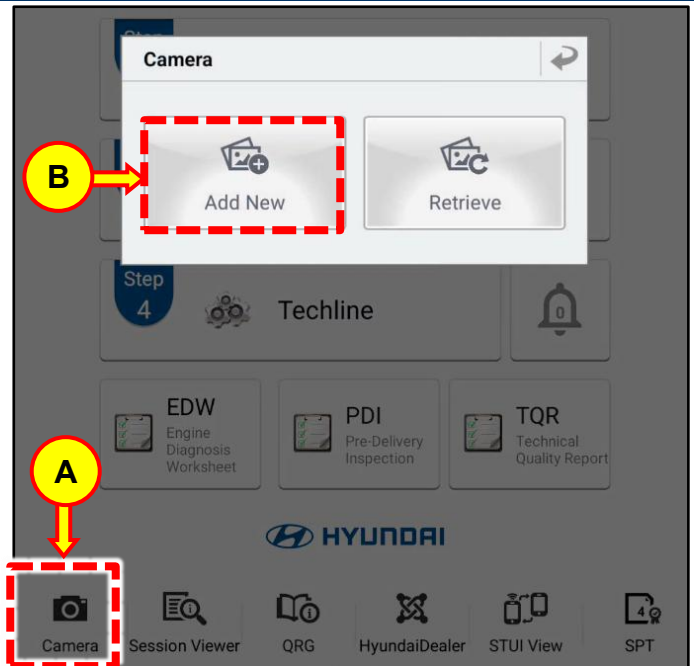
Applying the recommended torque to all fasteners is essential to reduce potential issues from occurring after the service procedure.

Use a plastic trim removal tool to avoid damaging trim and panels during the procedure.

Do **NOT** bend or scratch trim or panels

GDS Preparation for STUI Photo Submission

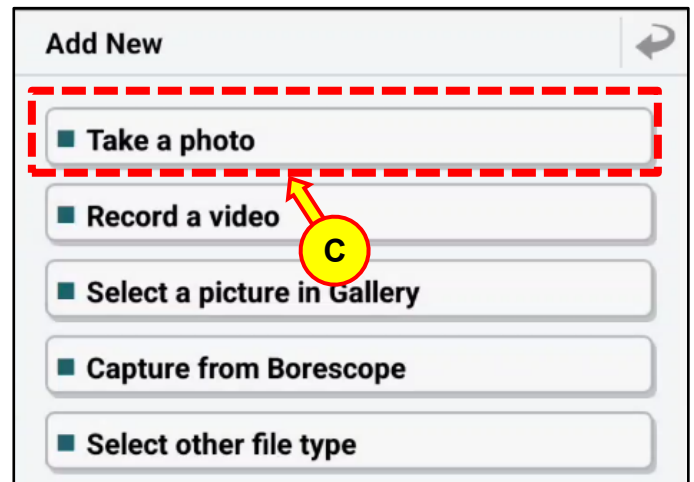
1. Connect GDS to the vehicle then select **AUTO VIN**.
2. Select **Camera** (A) from the Main Menu.
3. Select **Add New** (B).



4. Select **Take a photo** (C).

i Information

Do **NOT** take a photo at this time. The photo will be taken at the end of the removal process.

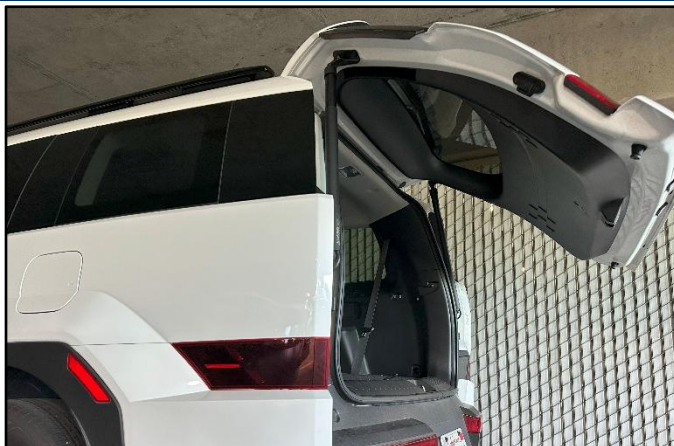


5. Confirm the vehicle information is displayed in the lower right-hand corner.



Rear-View Camera Harness Replacement

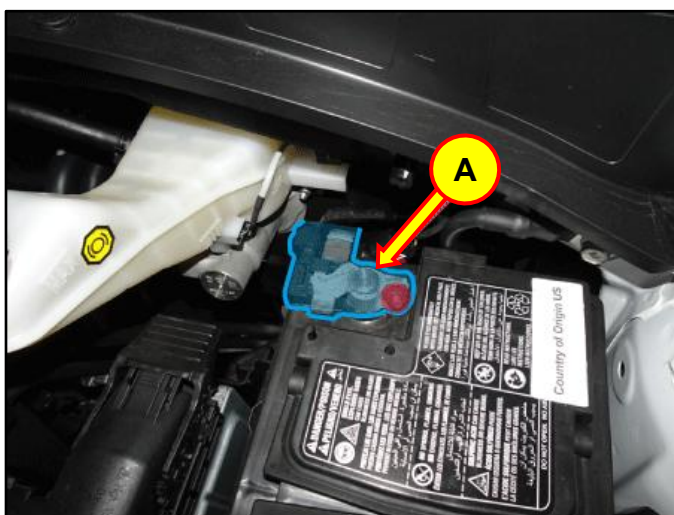
1. Lift tailgate to the opened position.



2. Disconnect the negative (-) battery terminal (A).

Tightening Torque:

lb-ft	6.5
lb-in	78
N.m	8.8



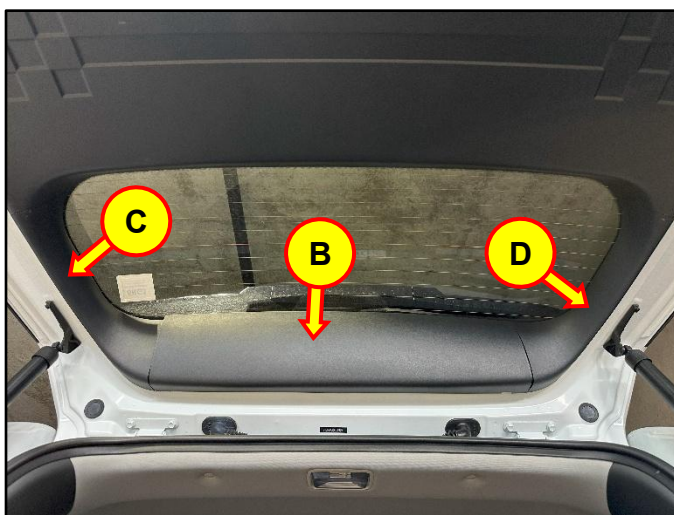
3. Remove the center (B), left (C), and right (D) tailgate trims.

***i* Information**

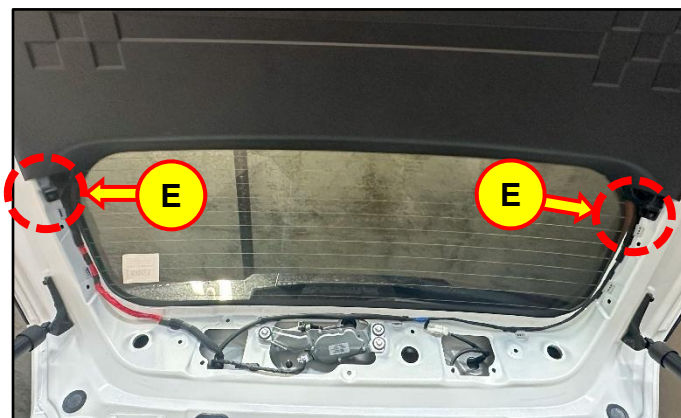
The panels are held in by clips.

NOTICE

Use a plastic trim tool to prevent damage.



4. Remove two screws (E).



5. Gently pry out the tailgate inner switch (F).

Disconnect the harness connector, and remove the tailgate inner switch (F).

NOTICE

Use a plastic trim tool to prevent damage.



6. Gently pull and remove the tailgate trim (G).

i Information

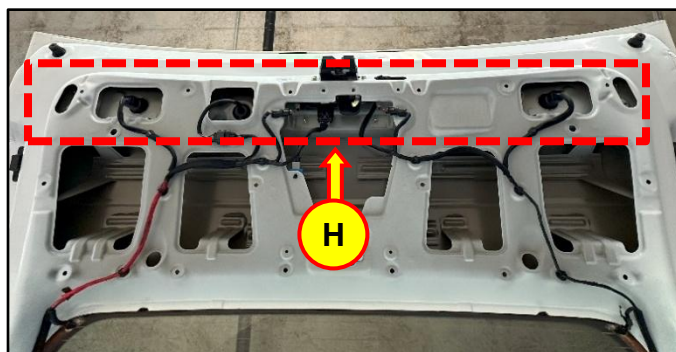
The tailgate trim is held in by clips.



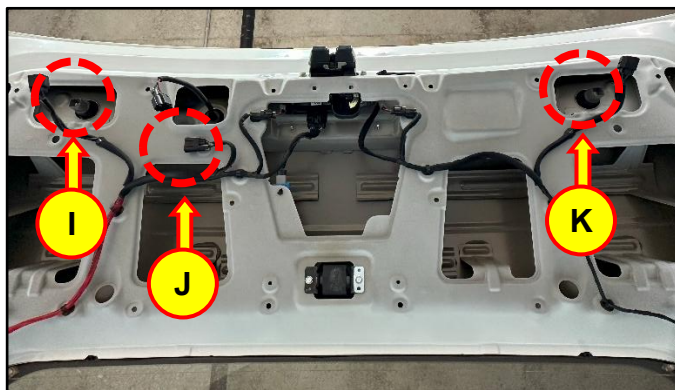
7. Remove the ten **10 mm** nuts (H) within the designated area.

Tightening Torque:

lb-ft	1.8
lb-in	21.6
N.m	2.4



8. Disconnect the camera (J), and the left (I), and right (K) taillight connectors.



9. Lower the tailgate and remove the left and right rear taillight (L).



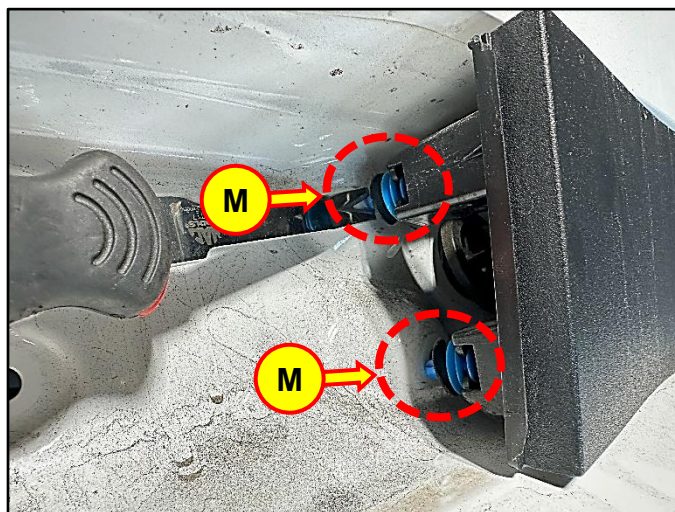
10. Carefully pry the clips (M) of the the left and right side tailgate garnish to detach them.

NOTICE

Do **NOT** attempt to remove the tailgate garnish as the clips behind the center of the component need to be detached.

NOTICE

Use a plastic trim tool to prevent damage.

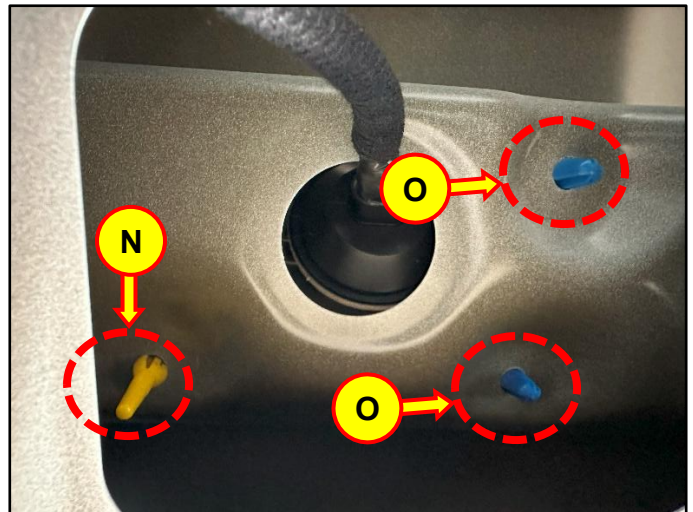
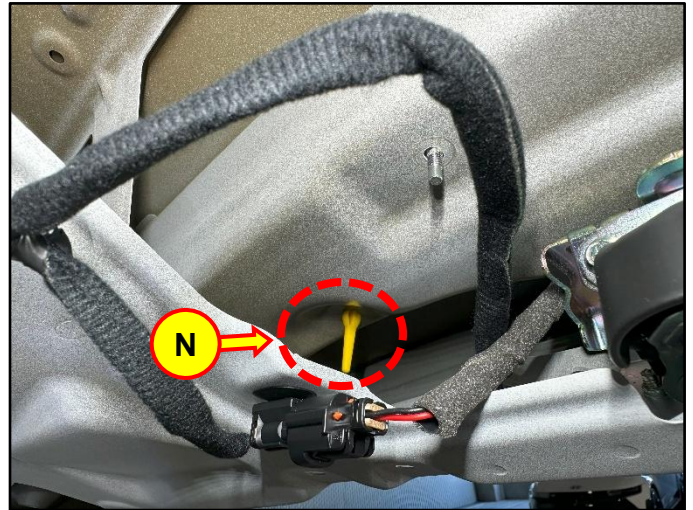


11. Disengage the two yellow (N), and blue clips (O) from the interior.

Remove the rear center tailgate garnish.

NOTICE

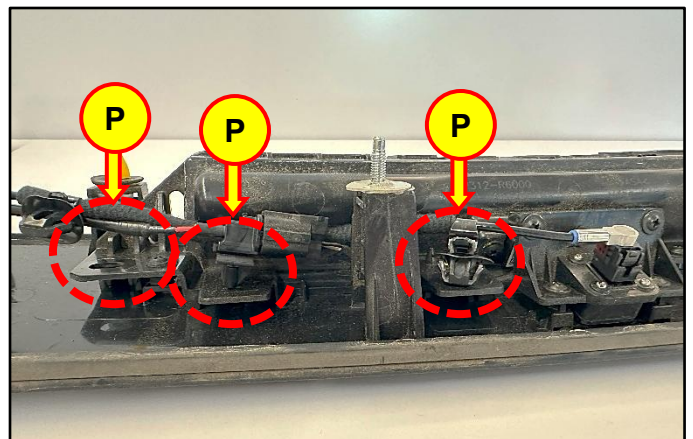
Use a plastic trim tool to prevent damage.



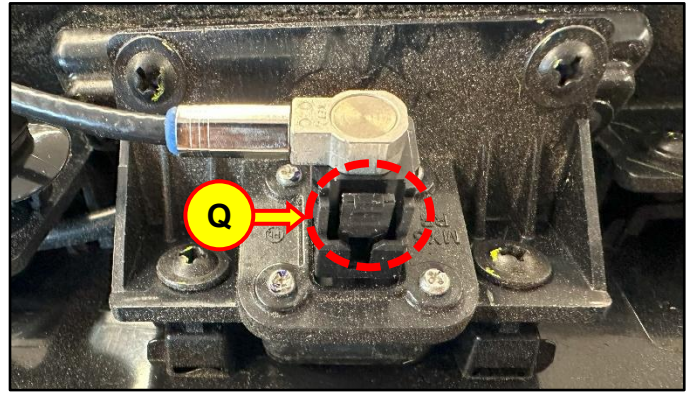
12. Release the three mounting clips (P) from the tailgate garnish.

NOTICE

Use a plastic trim tool to prevent damage.



13. Remove the rear camera coaxial cable by pinching the locking tab (Q) and pull it outward.



14. Remove and replace the rear camera wiring harness.

15.

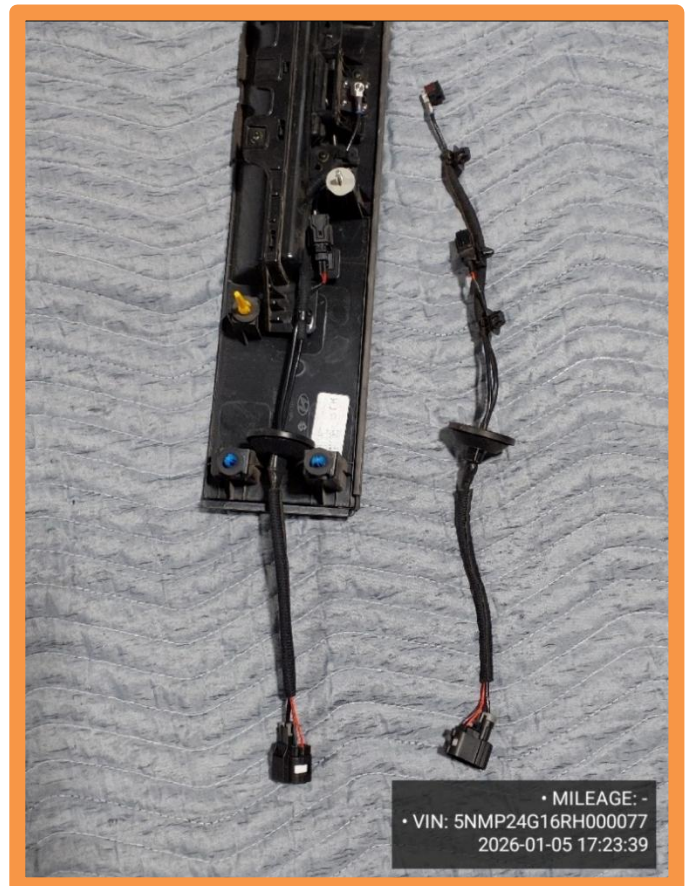
**DIGITAL
DOCUMENTATION**



Using the STUI camera function, take a photo of the original harness placed next to the newly installed harness.

Upload the photo to STUI.

NOTE: If the STUI camera function is **NOT** used, write the last 6 digits of the VIN and the date of repair on a piece of paper to include in the photo.



16. Reinstall all parts in the reverse order of removal process.
17. Confirm the rear-view camera is functioning as designed.
18. The service procedure is now complete.