



HYUNDAI

Technical Service Bulletin

GROUP

RECALL

NUMBER

26-01-023H

DATE

FEBRUARY 2026

MODEL(S)

SONATA
(DN8, DN8A)

SUBJECT: FUEL TANK EXPANSION - CHECK VALVE REPLACEMENT, FUEL TANK INSPECTION, & ECM UPDATE (RECALL 286)

This TSB supersedes 25-01-001H to eliminate the check valve inspection procedure (will be replaced in all cases), to update the Description (page 1), Warranty Information (page 4), Flowchart (page 7), the entire Service Procedure, and to add a section at the end, Appendix: Operation Code Reference Guide, highlighting the flowpath for each op code.

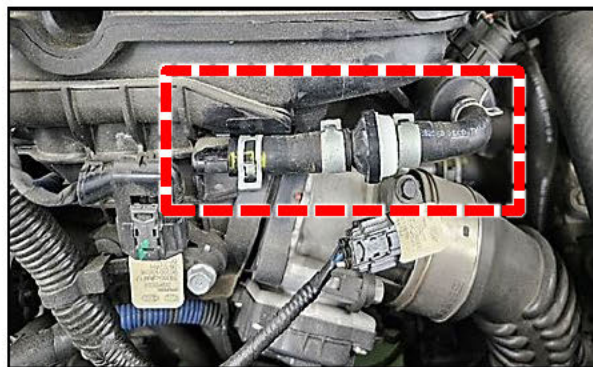
* IMPORTANT

Vehicle repairs related to safety recalls are critically important and must be performed properly in accordance with TSB procedures. Review this bulletin in its entirety prior to beginning any repair work.

As required by federal law, dealers must not deliver new vehicles for sale or for lease to customers until all open recalls have been performed. Dealers must also perform all open recalls on used vehicles, demo, and rental vehicles prior to placing them into customer use and whenever an affected vehicle is in the shop for any maintenance or repair.

Access the "Vehicle Information" screen via WebDCS to identify open recalls.

Description: The fuel tank assembly in certain Sonata (DN8, DN8A) vehicles may become pressurized with compressed air due to a worn purge control system check valve causing the tank to deform. Deformation of the fuel tank can lead to fuel leakage over time. The presence of leaked or accumulated fuel near an ignition source can increase the risk of a vehicle fire. This bulletin contains the procedure to visually inspect the fuel pump service cover and fuel tank for deformation and/or melting, measure the gap between the fuel tank and fuel tank band, followed by instructions to replace the fuel tank and perform an ECU update, based on inspection results. In all cases, the check valve will be replaced and an Emissions Label applied to the hood of the vehicle.



Check Valve



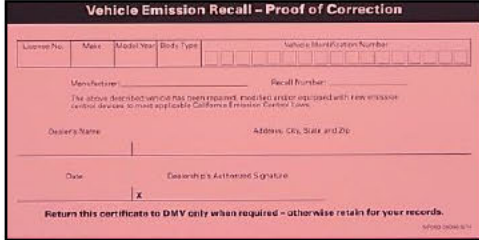
SUBJECT:

FUEL TANK EXPANSION - CHECK VALVE REPLACEMENT,
FUEL TANK INSPECTION, & ECM UPDATE (RECALL 286)

Applicable Vehicles (Certain):

Model Year	Model	Engine	Production Dates	VIN Starts with
2021 - 2023	Sonata (DN8)	1.6T	03/05/2021 - 10/07/2023	KMH
2020 - 2022	Sonata (DN8A)		10/22/2019 - 07/17/2022	5NP

Parts Information:

Part Name	Part Number	Figure	Remarks
Check Valve Assy	28918-2M431QQH		<ol style="list-style-type: none"> 1. Clip-Hose (14720-15006S) 2. Clip-Hose (14720-13806S) 3. Valve-Check 4. Hose Assembly-Vapor, A 5. Hose Assembly-Vapor, B
Hyundai Emissions Label	NP001-HYUEM		Apply to all vehicles regardless of state
Vehicle Emission Recall - Proof of Correction Card	NP050-09006		Order only for states: CA, CO, CT, DE, MA, MD, ME, NJ, NY, OR, PA, RI, VT, WA

SUBJECT:

FUEL TANK EXPANSION - CHECK VALVE REPLACEMENT,
FUEL TANK INSPECTION, & ECM UPDATE (RECALL 286)

Parts Information (for fuel tank replacement):

Part Name	Part Number	Qty.	Remarks
Tank Assy - Fuel	31150-L0000QQH	1	Order only if fuel tank replacement is required.
Protector – Fuel Tank Heat	31220-L1000QQH	1	
Band Assy – Fuel Tank (LH)	31210-L1000QQH	1	
Band Assy – Fuel Tank (RH)	31211-L1000QQH	1	
Pad – Fuel Tank	31101-L1100QQH (DN8 only)	2	
	31101-C1000QQH	5	
	31101-L1000QQH	4	
	31101-3X000QQH	1	
Cover Assy – Fuel Pump A/S	31107-L1000QQH	1	
Packing – Fuel Pump	31115-0W000QQH	1	
Gasket – Exhaust Pipe	28751-3S100QQH	1	
Cover – Fuel Pump Plate	31152-L0000QQH	1	

SST Information:

Tool Name	Tool Number	Figure	Ordering Information
VCI 3	G0VHNNN06		Website: https://hyundaiesentialtools.com/ Email: Hyundaitools@snapon.com Phone: 1-855-763-9199 Hours: 7 AM – 7 PM CST
VCI 2	G1XDDMN001		
Fuel Pump Lock Ring Removal Tool	09310 - B8100		

NOTE : VCI 2 can **NO** longer be ordered but can be used for the updates in this TSB.

GDS Information:

Model	System	Event No.	Description
Sonata (DN8, DN8A)	Engine	1167	DN8(A) ECU UPGRADE AND FUEL TANK EXPANSION CHECK

(*or use a later available event as listed in the GDS **Engine** Update screen if one is available.)

SUBJECT:FUEL TANK EXPANSION - CHECK VALVE REPLACEMENT,
FUEL TANK INSPECTION, & ECM UPDATE (RECALL 286)**Warranty Information:**

Model	Op. Code	Operation	Op. Time	Causal Part	Nature Code	Cause Code
Sonata (DN8, DN8A)	51D298R0	Fuel Pump Cover Inspection (FAIL), Submit PA Request	0.4 M/H	59133-2H000	111	ZZ3
	51D298R1	Fuel Pump Cover Inspection (PASS), Fuel Tank Visual Inspection (FAIL), Check Valve/Fuel Tank Replacement, ECU S/W Check, and Emissions Label Application	1.7 M/H			
	51D298R2	Fuel Pump Cover Inspection (PASS), Fuel Tank Visual Inspection (FAIL), Check Valve/Fuel Tank Replacement, ECU S/W Check/Update, and Emissions Label Application	2.0 M/H			
	51D298R3	Fuel Pump Cover Inspection (PASS), Fuel Tank Visual Inspection (PASS), Fuel Tank Band Gap Measurement (FAIL), Check Valve/Fuel Tank Replacement, ECU S/W Check, and Emissions Label Application	1.7 M/H			
	51D298R4	Fuel Pump Cover Inspection (PASS), Fuel Tank Visual Inspection (PASS), Fuel Tank Band Gap Measurement (FAIL), Check Valve/Fuel Tank Replacement, ECU S/W Check/Update, and Emissions Label Application	2.0 M/H			
	51D298R5	Fuel Pump Cover Inspection (PASS), Fuel Tank Visual Inspection (PASS), Fuel Tank Band Gap Measurement (PASS), Check Valve Replacement, ECU S/W Check, and Emissions Label Application	0.5 M/H			
	51D298R6	Fuel Pump Cover Inspection (PASS), Fuel Tank Visual Inspection (PASS), Fuel Tank Band Gap Measurement (PASS), Check Valve Replacement, ECU S/W Check/Update, and Emissions Label Application	0.7 M/H			

SUBJECT:

FUEL TANK EXPANSION - CHECK VALVE REPLACEMENT,
FUEL TANK INSPECTION, & ECM UPDATE (RECALL 286)

NOTE 1: Submit claim on Claim Entry Screen as “Campaign” type.

NOTE 2: If any part(s) not subject to this TSB are found in need of replacement while performing the repair procedure, and the affected part(s) are still under warranty, the dealer may submit a separate claim using the same repair order. If the part(s) not subject to this TSB are out of warranty coverage, the dealer has the option to submit a PA Request for goodwill consideration on a case-by-case basis.

NOTE 3: This TSB includes repair validation photos. Op times include VIN, mileage, and multiple photo captures as outlined in the service procedure and flowchart on page 7. Refer to the latest Digital Documentation Policy for repair validation requirements.

NOTE 4: The incident parts are subject to callback through the normal Warranty Technical Center (WTC) parts return process. **Claim is subject to debit if the part is not returned.**

ROM ID Information:

Model	MY	ENGINE	TM	ECU Part Number	ROM ID	
					Current	Latest
Sonata (DN8, DN8A)	2020	GAMMA2 1.6T-GDI	8AT	39116-2M003	TDNA0NU06F00EE03 TDNA0NU06F10EE03 TDNA0NU06F20EE03 TDNA0NU06F30EE03 TDNA0NU06F40EE03 TDNA0NU06F522E03 TDNA0NU06F622E03 TDNA0NU06F724E03 TDNA0NU06F84AE03 TDNA0NU06F94AE03	TDNA0NU06FA4AE03
	2021			39116-2M013	TDNA1NU06F024E03 TDNA1NU06F124E03 TDNA1NU06F24AE03 TDNA1NU06F34AE03	TDNA1NU06F44AE03
	2022			39116-2M023	TDNA2NU06F02FE03 TDNA2NU06F12FE03 TDNA2NU06F2FBE03	TDNA2NU06F3FBE03
	2023			39116-2M033	TDNA3NU06F02NE03 TDNA3NU06F1NBE03	TDNA3NU06F2NBE03

SUBJECT:

FUEL TANK EXPANSION - CHECK VALVE REPLACEMENT,
FUEL TANK INSPECTION, & ECM UPDATE (RECALL 286)

Service Procedure:

DIGITAL DOCUMENTATION



This TSB includes repair validation photos. Refer to the latest Warranty Digital Documentation Policy for requirements.

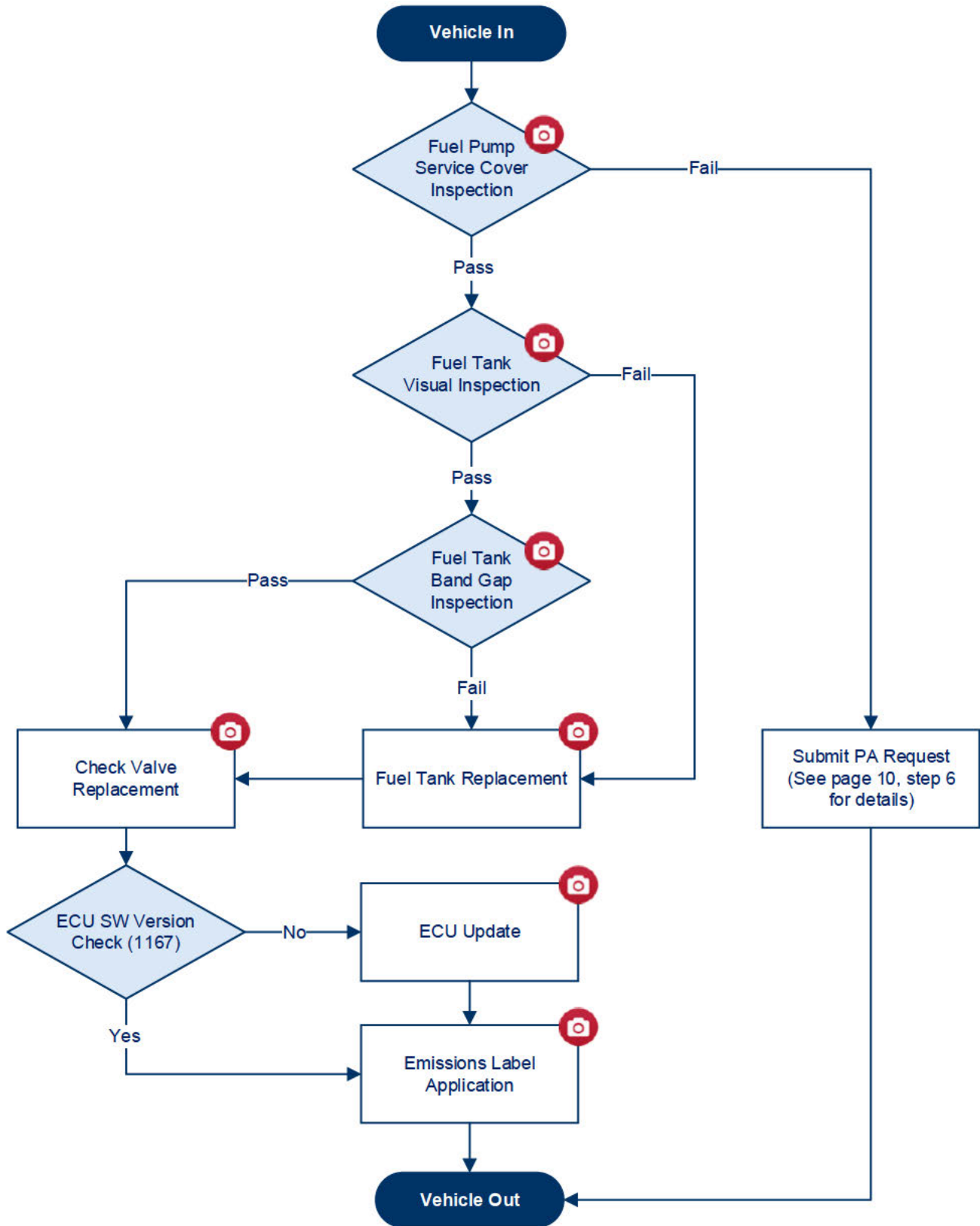
NOTICE

Applying the recommended torque to all fasteners is essential to reduce potential issues from occurring after the service procedure.

Table of Contents

Flowchart	7
Fuel Pump Service Cover Inspection	8
Fuel Tank Visual Inspection	11
Fuel Tank Band Gap Inspection.....	14
Fuel Tank Replacement.....	17
ECU Update Procedure (Automatic or Manual)	23
Emissions Label Application (for All Vehicles)	25
Vehicle Emission Recall – Proof of Correction Card (for Vehicles Registered in Certain States)	27
Appendix: Operation Code Reference Guide	28

Flowchart



Fuel Pump Service Cover Inspection

1. Remove the rear seat cushion by referring to the shop manual:
 - **Body (Interior and Exterior) > Rear Seat > Rear Seat Assembly > Repair procedures**

CAUTION

Wear gloves to prevent hand injuries.

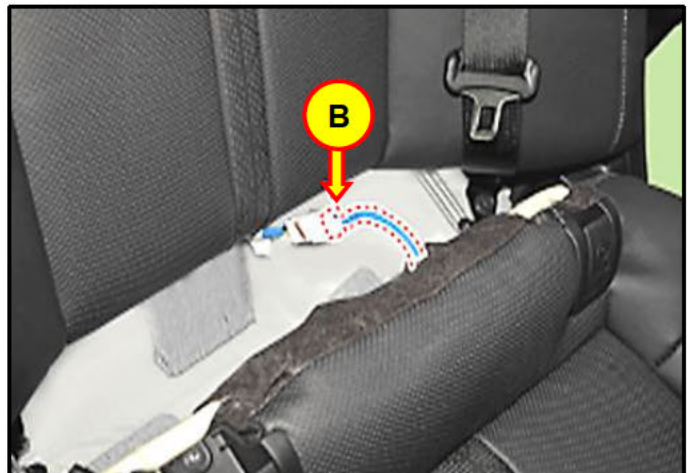
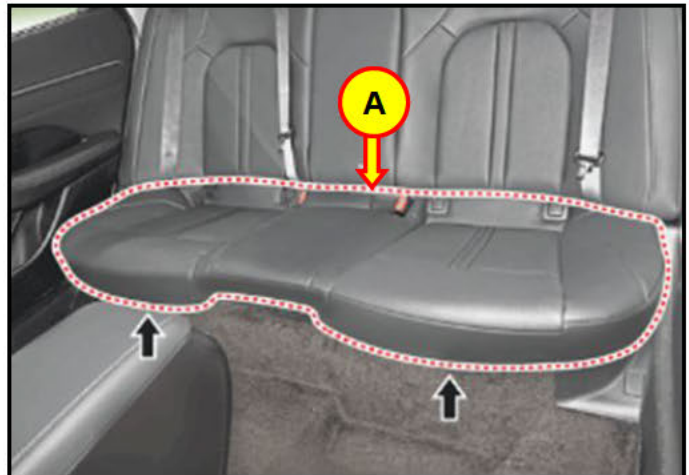
NOTICE

Do **NOT** damage, bend, or scratch interior trim and parts during the removal.

Remove the rear seat cushion assembly (A) by pulling it upward.

2. Disconnect the rear seat heater connector if equipped (B).

3. Disconnect the rear seat heater unit connector if equipped (C).



4.

**DIGITAL
DOCUMENTATION**

Using the STUI camera function, take a photo of the fuel pump service cover area.

Upload the photo to STUI.

NOTE: If the STUI camera function is **NOT** used, write the last 6 digits of the VIN and date of repair on a piece of paper to include in the photo.



SUBJECT:**FUEL TANK EXPANSION - CHECK VALVE REPLACEMENT,
FUEL TANK INSPECTION, & ECM UPDATE (RECALL 286)**

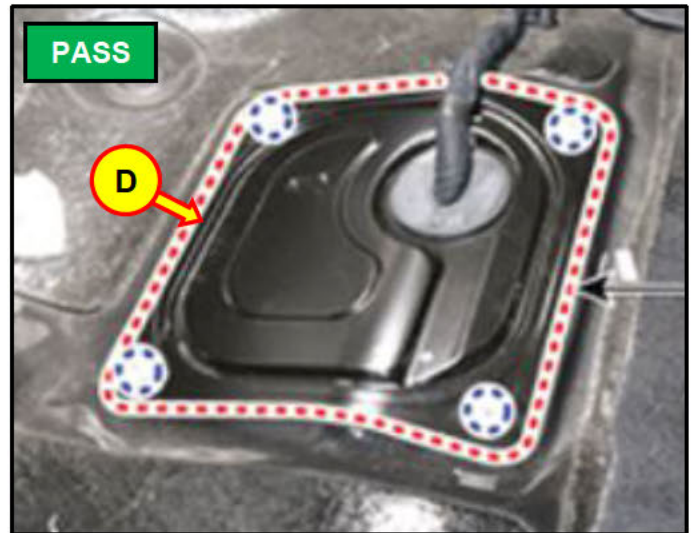
5. Inspect the fuel pump service cover and surrounding areas for the following items:
- Damage or deformation of the sheet metal.
 - Evidence of a previous sheet metal repair or repair attempt.
 - Gap between the fuel pump service cover (D) and surrounding sheet metal.

PASS: If all of the items above are **NOT** present:

- Proceed to the [Fuel Tank Visual Inspection](#) procedure.

FAIL: If any of the items are present:

- Proceed to **step 6**.



6. Submit a Prior Approval (PA) Request with the following information:
- Repair Group: **Other**
 - Claim Type: **Recall/Campaign**
 - Required Attachment: **Fuel Pump Cover Area**

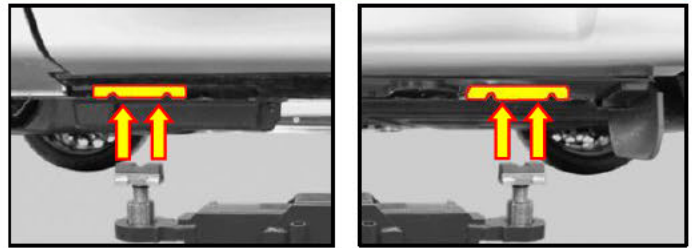
Do NOT continue with the remaining service procedure in this TSB. Hold the vehicle until otherwise directed by PA.

Fuel Tank Visual Inspection

1. Visually check that the lift blocks are properly seated on the vehicle support points and raise the vehicle.

NOTICE

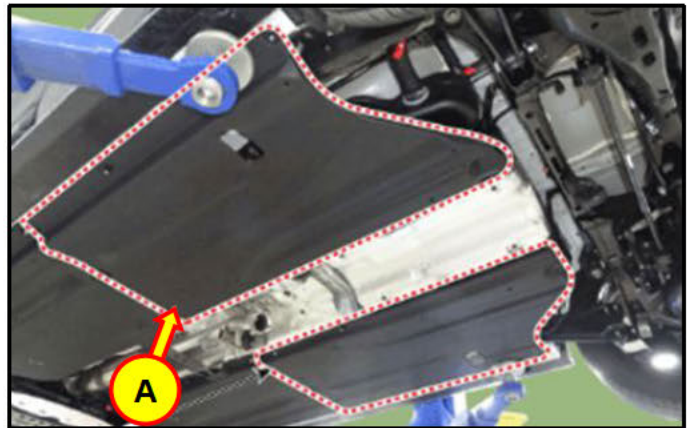
Raising the vehicle from anywhere other than the support points may damage vehicle components.



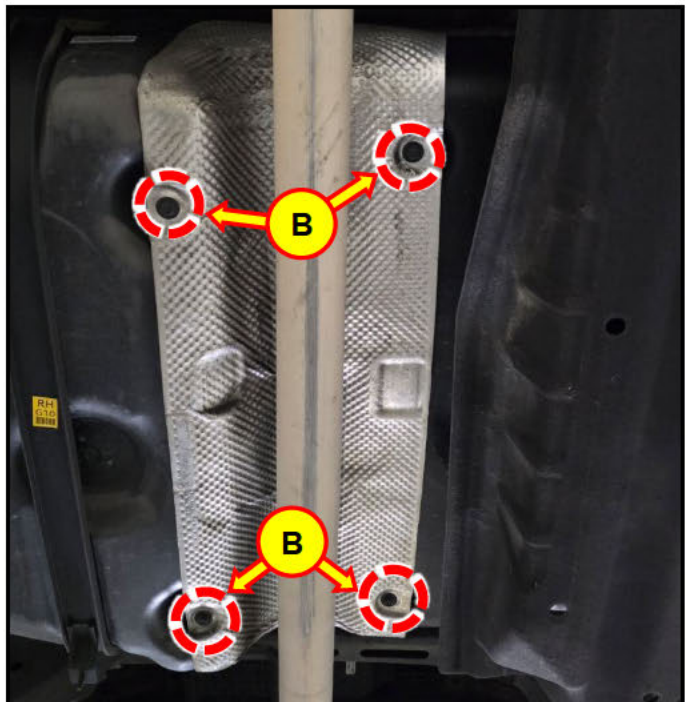
Refer to the shop manual:

- **General Information > Lift and Support Points > General Information**

2. Remove the rear floor under cover (A).



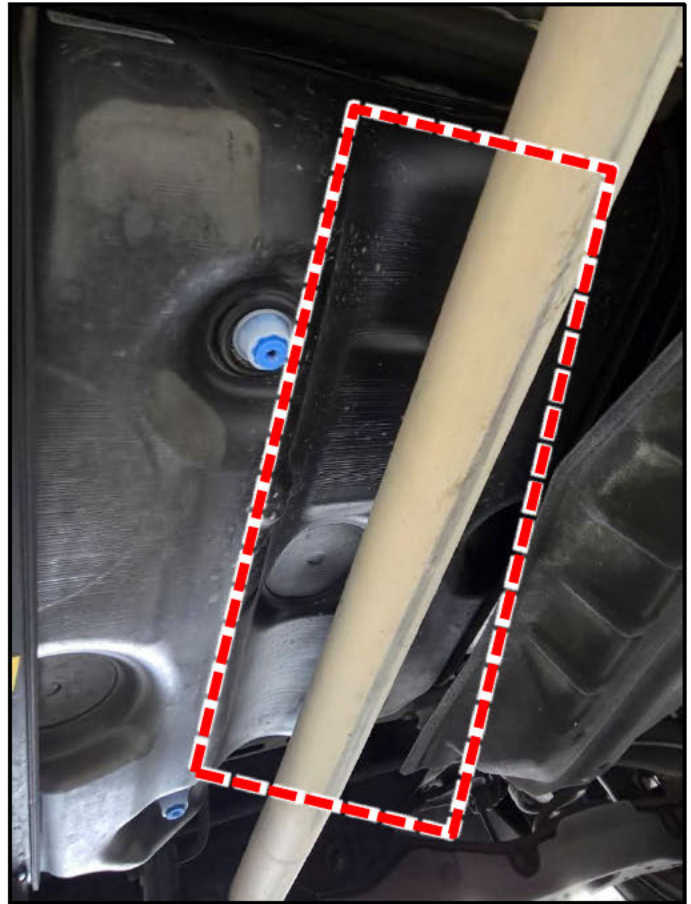
3. Remove the 4 bolts (B) securing the exhaust heat protector to the fuel tank and remove the heat protector.



SUBJECT:

FUEL TANK EXPANSION - CHECK VALVE REPLACEMENT,
FUEL TANK INSPECTION, & ECM UPDATE (RECALL 286)

4. Inspect the fuel tank surface for any melted plastic or damage.



- 5.

**DIGITAL
DOCUMENTATION**



Using the STUI camera function, take a photo of the fuel tank area with the heatshield removed as shown.

Upload the photo to STUI.

NOTE: If the STUI camera function is **NOT** used, write the last 6 digits of the VIN and date of repair on a piece of paper to include in the photo.



SUBJECT:FUEL TANK EXPANSION - CHECK VALVE REPLACEMENT,
FUEL TANK INSPECTION, & ECM UPDATE (RECALL 286)

6. **PASS:** If the fuel tank does **NOT** show signs of melting or damage, re-install the heat protector and proceed to the [Fuel Tank Band Gap Inspection](#) procedure.

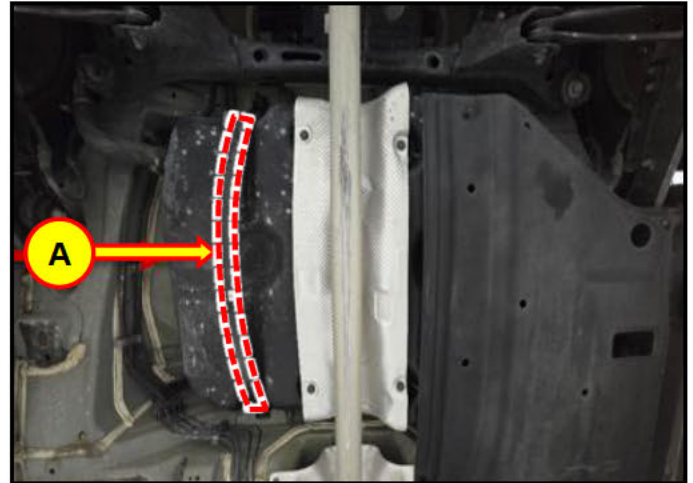
FAIL: If the fuel tank shows signs of melting or damage, proceed to the [Fuel Tank Replacement](#) procedure.

SUBJECT:

FUEL TANK EXPANSION - CHECK VALVE REPLACEMENT,
FUEL TANK INSPECTION, & ECM UPDATE (RECALL 286)

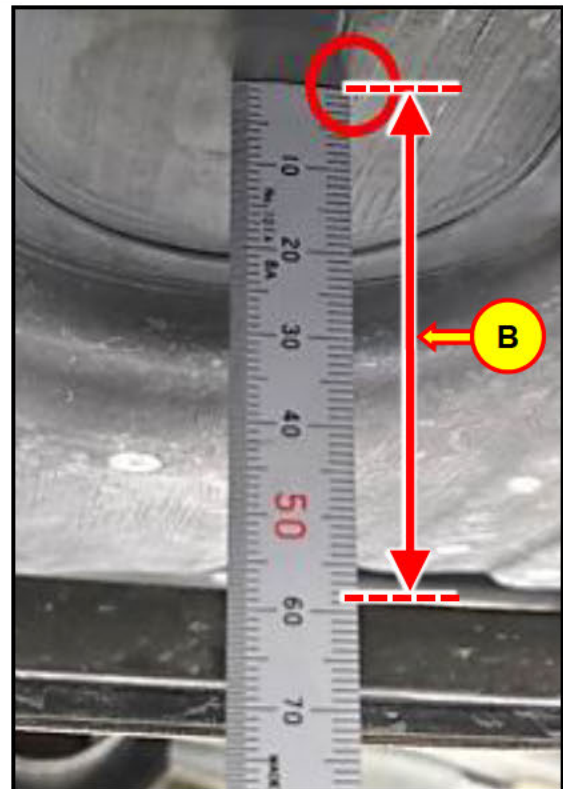
Fuel Tank Band Gap Inspection

1. Locate the LH fuel tank band (A) under the left rear passenger seat.



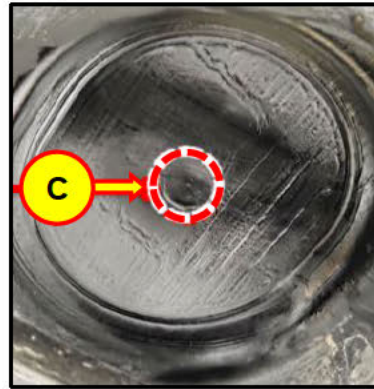
2. Use a suitable measuring tool gauged for millimeters/inches to measure the gap (B) between the fuel tank and fuel tank band.

Do **NOT** include the thickness of the fuel tank band in your measurement.



i Information

Be sure to measure from the center of the circular feature (C) in the fuel tank as shown.



3.

DIGITAL DOCUMENTATION



Using the STUI camera function, take a photo of the of gap showing the ruler and measurement clearly.

Upload the photo to STUI.

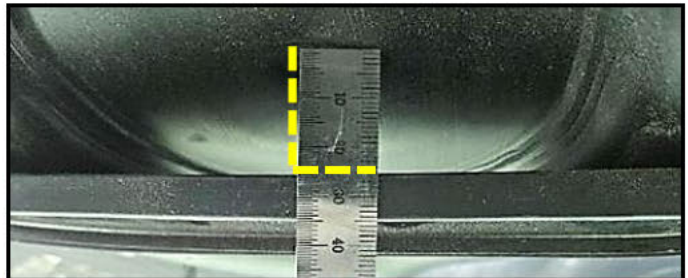
NOTE: If the STUI camera function is **NOT** used, write the last 6 digits of the VIN and date of repair on a piece of paper to include in the photo.



4.

- **PASS:** If the gap is **25 mm (0.98 inch) or less:**
 - Lower the vehicle.
 - Reinstall and reconnect all seat cover components in the reverse order of the removal process.
 - Proceed to **step 5**.

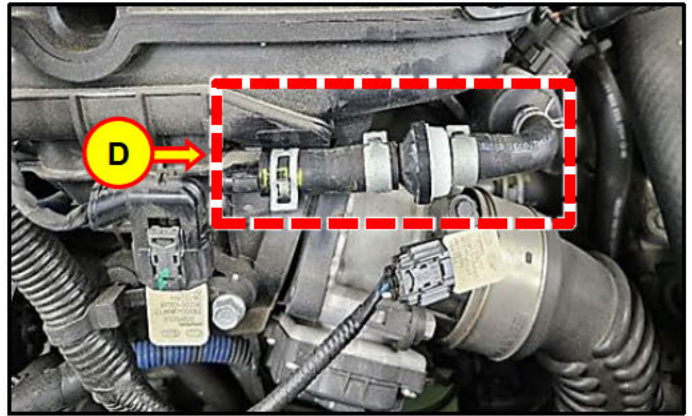
- **FAIL:** If the gap is **more than 25 mm (0.98 inch):**
Proceed to the [Fuel Tank Replacement](#) procedure.



SUBJECT:

**FUEL TANK EXPANSION - CHECK VALVE REPLACEMENT,
FUEL TANK INSPECTION, & ECM UPDATE (RECALL 286)**

5. Open the hood and replace the PCSV check valve (D) with the revised design part.



- 6.

**DIGITAL
DOCUMENTATION**



Using the STUI camera function, take a photo of the new check valve installed on the vehicle.

Upload the photo to STUI.

NOTE: If the STUI camera function is **NOT** used, write the last 6 digits of the VIN and date of repair on a piece of paper to include in the photo.



7. Proceed to the [ECU Update Procedure \(Automatic or Manual\)](#).

Fuel Tank Replacement

1. If necessary, perform steps 1 – 3 from the [Fuel Pump Service Cover Inspection](#) procedure.
2. Release the residual pressure in the fuel line by referring to the shop manual:
 - **Engine Control / Fuel System > Fuel Delivery System > Release Residual Pressure in Fuel Line**

**Information**

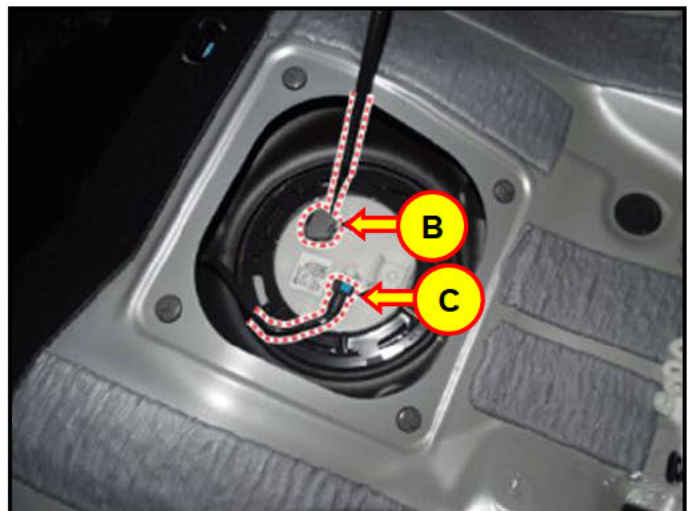
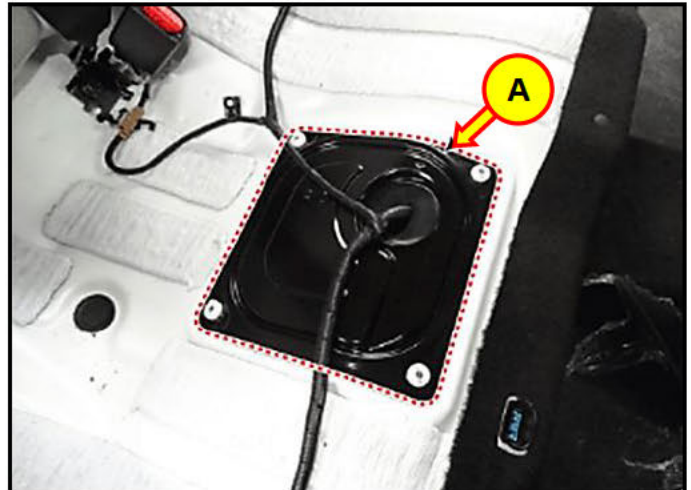
After completing the **Release Residual Pressure in Fuel Line** procedure, use a shop towel to cover the hose connection to prevent residual fuel from spilling out before removing any fuel connection.

3. Remove the fuel pump service cover (A).

**Information**

Replace with a new service cover after the new fuel tank is installed.

4. Disconnect the fuel pump connector (B), then disconnect the fuel feed tube quick connector (C).



SUBJECT:**FUEL TANK EXPANSION - CHECK VALVE REPLACEMENT,
FUEL TANK INSPECTION, & ECM UPDATE (RECALL 286)**

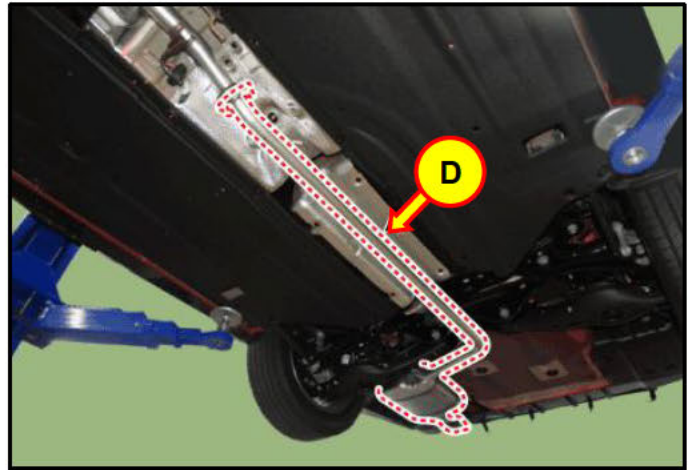
5. Lift the vehicle and remove the rear muffler assembly (D).

Refer to the shop manual:

- **Engine Mechanical System > Intake and Exhaust System > Muffler > Repair procedures > Rear Muffler**

**Information**

During installation, replace the gaskets with new parts.

**Tightening Torque:**

lb-ft	37
N.m	49

6. Remove the side under cover.

Tightening Torque:

lb-ft	7.95
lb-in	95.4
N.m	10.8

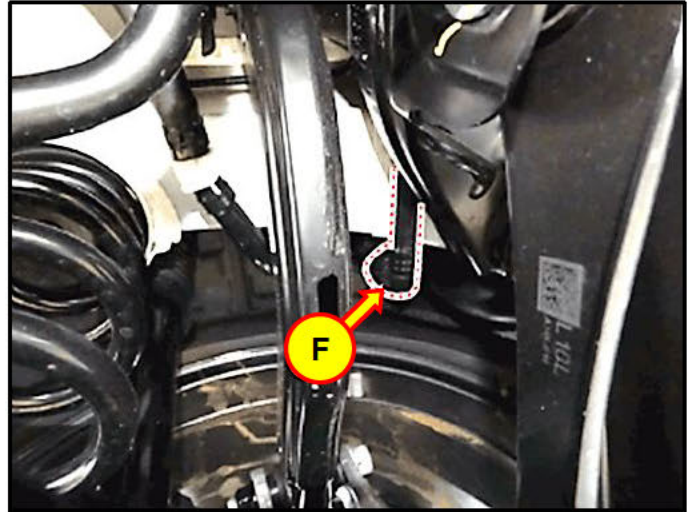
7. Disconnect the fuel filler hose (E).



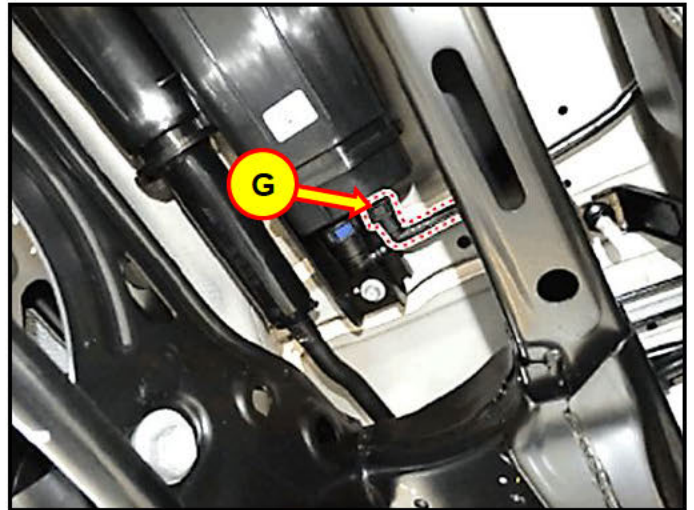
SUBJECT:

**FUEL TANK EXPANSION - CHECK VALVE REPLACEMENT,
FUEL TANK INSPECTION, & ECM UPDATE (RECALL 286)**

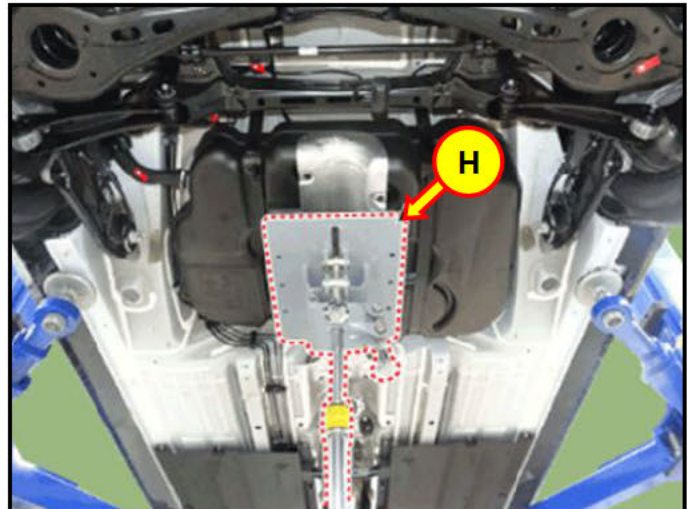
8. Disconnect the leveling tube quick connector (F).



9. Disconnect the vapor tube quick connector (G).



10. Use a jack (H) to support the fuel tank.



SUBJECT:**FUEL TANK EXPANSION - CHECK VALVE REPLACEMENT,
FUEL TANK INSPECTION, & ECM UPDATE (RECALL 286)**

11. Remove the fuel tank band (I) and then remove the fuel tank (J) from the vehicle.

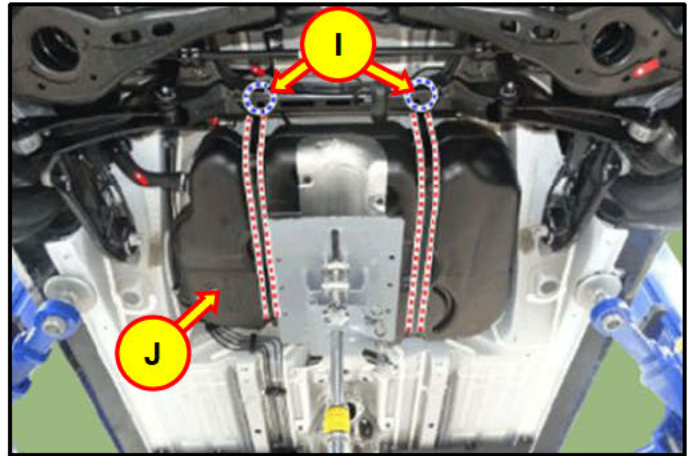
Tightening Torque:

lb-ft	35
N.m	47

***i* Information**

During installation replace the fuel tank bands with new parts.

Use a siphon pump to transfer fuel to supplied tank.



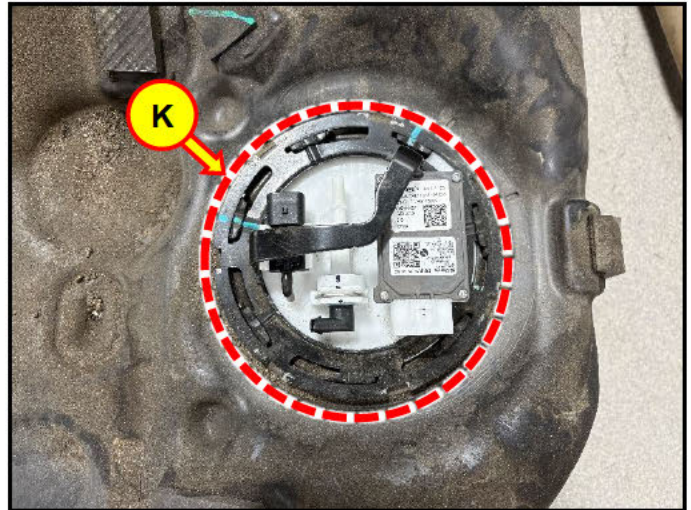
12. Once the fuel tank is lowered, remove the fuel pump module (K) and remove the fuel inside the fuel tank (to transfer over to the new fuel tank using a suitable siphoning pump).

NOTICE

The newly supplied O-Ring of the fuel pump module top plate must be installed during installation of the fuel pump to the new fuel tank.

***i* Information**

Use SST 09310-B8100 to remove the fuel pump module lock ring.



13. Attach the fuel tank heat protector (L) to the new fuel tank.



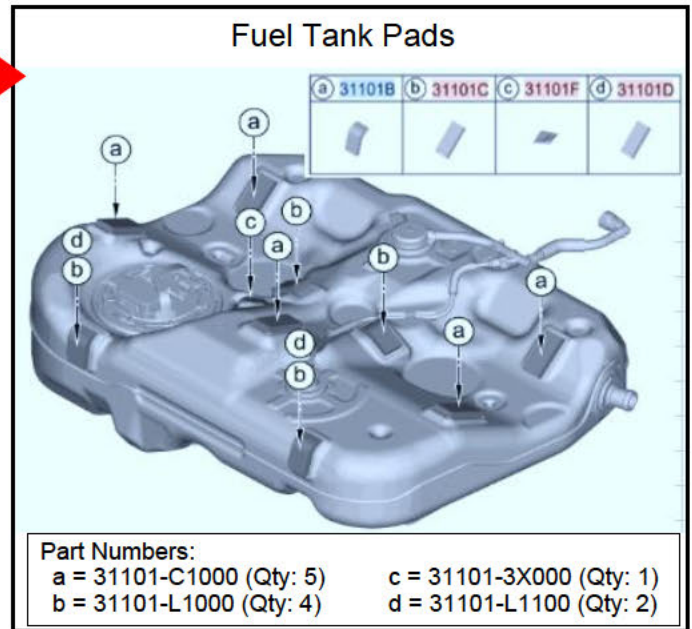
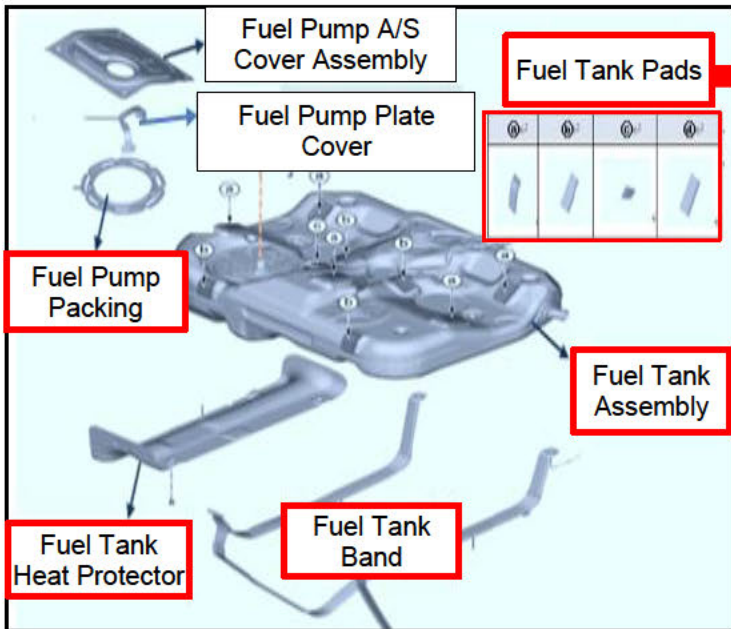
14. Install fuel tank pads as indicated below.

i Information

Do **NOT** reuse:

- Fuel tank assembly, fuel tank heat protector, fuel tank band, fuel tank pads, fuel pump packing.

Reuse all other items.



15. Reinstall and reconnect all components in the reverse order of the removal process.

16.

DIGITAL DOCUMENTATION



Using the STUI camera function, take a photo of the new fuel tank installed on the vehicle.

Upload the photo to STUI.

NOTE: If the STUI camera function is **NOT** used, write the last 6 digits of the VIN and date of repair on a piece of paper to include in the photo.



SUBJECT:

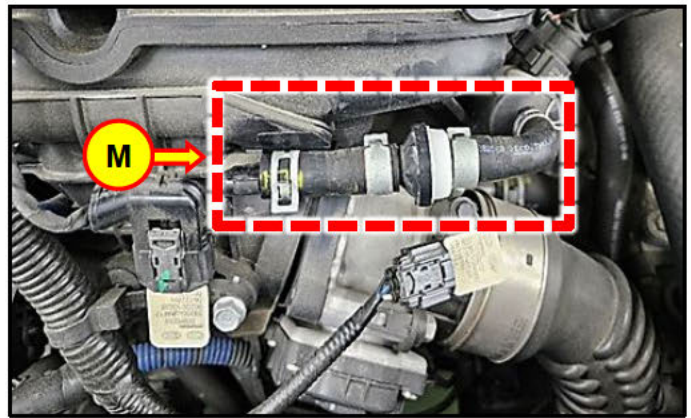
**FUEL TANK EXPANSION - CHECK VALVE REPLACEMENT,
FUEL TANK INSPECTION, & ECM UPDATE (RECALL 286)**

17. Start the engine, ensure proper operation, and check for fuel leaks.
Clear the Diagnostic Trouble Code (DTC) associated with the fuel pump fuse using GDS.

NOTICE

Removing the fuel pump fuse may trigger a Diagnostic Trouble Code (DTC). Use GDS to clear the code(s) after completing the **Release Residual Pressure in Fuel Line** procedure.

18. Replace the check valve (M).



- 19.

DIGITAL DOCUMENTATION



Using the STUI camera function, take a photo of the new check valve installed on the vehicle.

Upload the photo to STUI.

NOTE: If the STUI camera function is **NOT** used, write the last 6 digits of the VIN and date of repair on a piece of paper to include in the photo.



20. Proceed to the [ECU Update Procedure \(Automatic or Manual\)](#).

SUBJECT:

FUEL TANK EXPANSION - CHECK VALVE REPLACEMENT,
FUEL TANK INSPECTION, & ECM UPDATE (RECALL 286)

ECU Update Procedure (Automatic or Manual)

i Information

If **Event 1167** has already been performed and is **NOT** available as an update, then the ECU update is **NOT** necessary. Proceed to [Emissions Label Application \(for All Vehicles\)](#).

NOTICE

You must initially perform the GDS ECU update in Auto Mode.

- If the ECU update starts but then fails in Auto Mode, perform the update in Manual Mode to recover.

NOTICE

Ensure the vehicle's battery charge is **above 80% SOC** and the tablet's battery charge is **above 30%** before performing a software update to avoid update failure.

1. Perform the ECM update in Auto Mode.

i Information

Refer to **TSB # 25-GI-011H**, "ECU Update Procedure for Tablet-Based GDS-Smart", for additional information.

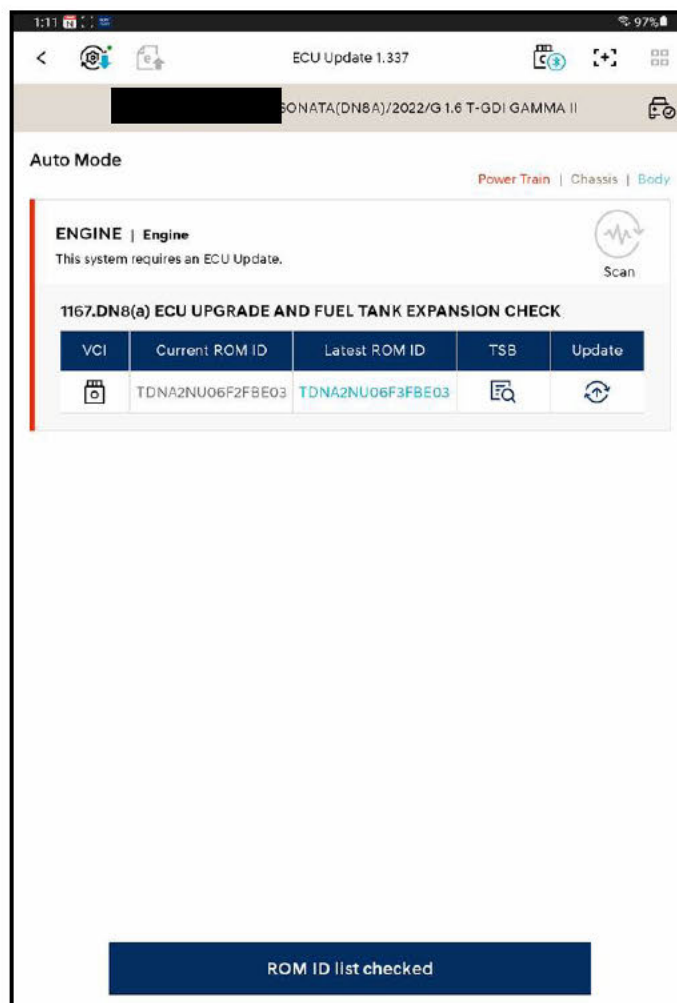
2. Verify the ROM ID by selecting the **Engine** system to scan the vehicle's current ROM ID.

NOTICE

Check the current ROM ID version and compare it to the ROM ID Information table before attempting to perform the software update.

NOTICE

If the update fails, remove the power connector from the in-cabin fuse box for at least **5 seconds**. Alternatively, disconnect the negative (-) **12V** battery terminal, wait at least **5 seconds**. Reassemble and retry the update.



SUBJECT:**FUEL TANK EXPANSION - CHECK VALVE REPLACEMENT,
FUEL TANK INSPECTION, & ECM UPDATE (RECALL 286)**

3. After the ECU update process shows 100% complete, cycle the ignition key to **OFF** for at least **10 seconds** to reset the control unit.

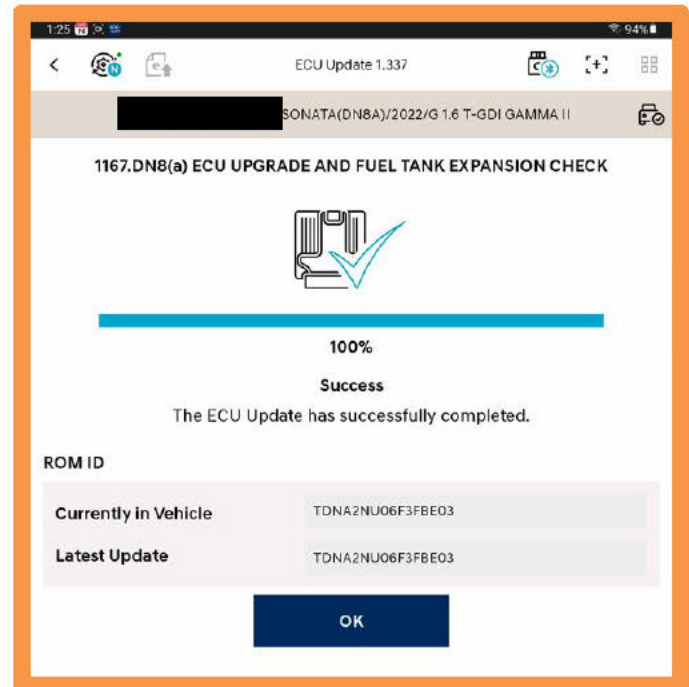
- 4.

**DIGITAL
DOCUMENTATION**

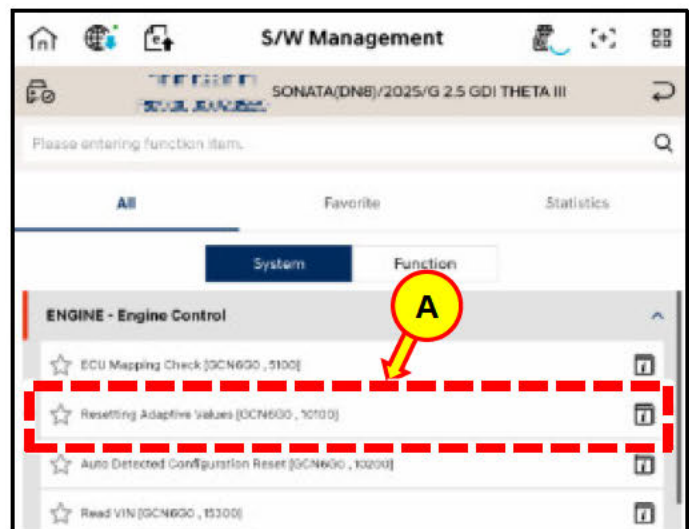
Using the tablet or GDS screen capture function, take a screenshot of the ECU Update "Success" result screen.

Upload the photo to STUI.

NOTE: The VIN/Date/Time/Mileage photo imprint is **NOT** required for GDS screenshots.



5. Perform an **All Systems Fault Code** search and erase DTC history that had incidentally occurred from the ECU update.
6. Reset adaptive values (A) using GDS.



7. Start the engine to confirm proper operation of the vehicle.
8. Proceed to [Emissions Label Application \(for All Vehicles\)](#) on the next page.

SUBJECT:

FUEL TANK EXPANSION - CHECK VALVE REPLACEMENT,
FUEL TANK INSPECTION, & ECM UPDATE (RECALL 286)

NOTICE

If the ECU update fails in Auto Mode, perform the update in Manual Mode using the password(s) below.

Manual Mode Password Information:

Event	ECM Menu	Password
1167	DN8(a) GAMMA 1.6TGDI ECU 39116-2M003	2003
	DN8(a) GAMMA 1.6TGDI ECU 39116-2M013	2013
	DN8(a) GAMMA 1.6TGDI ECU 39116-2M023	2023
	DN8(a) GAMMA 1.6TGDI ECU 39116-2M033	2033

Emissions Label Application (for All Vehicles)

- Fill in the Dealer Code and Date on the emissions label, and apply adjacent to the existing label, on the underside of the hood, as shown.

Be sure to clean the mounting surface to ensure proper label adhesion.

**Information**

If there is a Campaign **9B1** label already present, do **NOT** place the Recall **286** emissions label directly over it.

Keep the label separate from the previous **9B1** label.



SUBJECT:**FUEL TANK EXPANSION - CHECK VALVE REPLACEMENT,
FUEL TANK INSPECTION, & ECM UPDATE (RECALL 286)**

2.

**DIGITAL
DOCUMENTATION**

Using the STUI camera function, take a photo of the emissions label attached to the vehicle.

Upload the photo to STUI.

NOTE: If the STUI camera function is **NOT** used, write the last 6 digits of the VIN and date of repair on a piece of paper to include in the photo.



3. Proceed to the next section and complete the [Vehicle Emission Recall - Proof of Correction Card](#) for the states listed.

If **NOT** applicable to your state, the repair process is complete.

SUBJECT:

FUEL TANK EXPANSION - CHECK VALVE REPLACEMENT,
FUEL TANK INSPECTION, & ECM UPDATE (RECALL 286)

Vehicle Emission Recall – Proof of Correction Card (for Vehicles Registered in Certain States)

For vehicles registered in California, Colorado, Connecticut, Delaware, Maine, Maryland, Massachusetts, New Jersey, New York, Oregon, Pennsylvania, Rhode Island, Vermont, and Washington:

VEHICLE EMISSION RECALL - PROOF OF CORRECTION CARD

A Vehicle Emission Recall - Proof of Correction card must be filled out for all vehicles registered in California, Colorado, Connecticut, Delaware, Maine, Maryland, Massachusetts, New Jersey, New York, Oregon, Pennsylvania, Rhode Island, Vermont, and Washington. Residents of these states, who own an affected vehicle, will be required to possess a Vehicle Emission Recall - Proof of Correction card as evidence of voluntary service campaign completion, when they apply for vehicle registration renewal.

WHAT TO DO WITH THE CARD:

The Vehicle Emission Recall - Proof of Correction card must be completed by the Dealership's Service Manager using a permanent ink pen. A fine point pen is recommended. When filling in the information, copy the information directly from the vehicle, not from the repair order.

ALL INFORMATION MUST BE PRINTED AND NEAT.

The copy of the card shown below indicates the areas to be filled in. Each area must be filled in.

A completed Vehicle Emission Recall - Proof of Correction card should be given to the owner of the vehicle upon completion of the Campaign.

- | | |
|-----------------------------------|-----------------------------------------------------------------------------------|
| 1. Enter Vehicle's License Number | 7. Enter Dealership Name |
| 2. Enter "Hyundai" | 8. Enter Dealership's Address |
| 3. Enter Model Year | NOTE: Enter the physical address, not the mailing address (not a P.O. Box) |
| 4. Enter Model (i.e. Sonata) | 9. Enter Date of Repair |
| 5. Enter the vehicle's VIN Number | 10. Service Manager Sign Here |
| 6. Enter Campaign Number: 286 | |

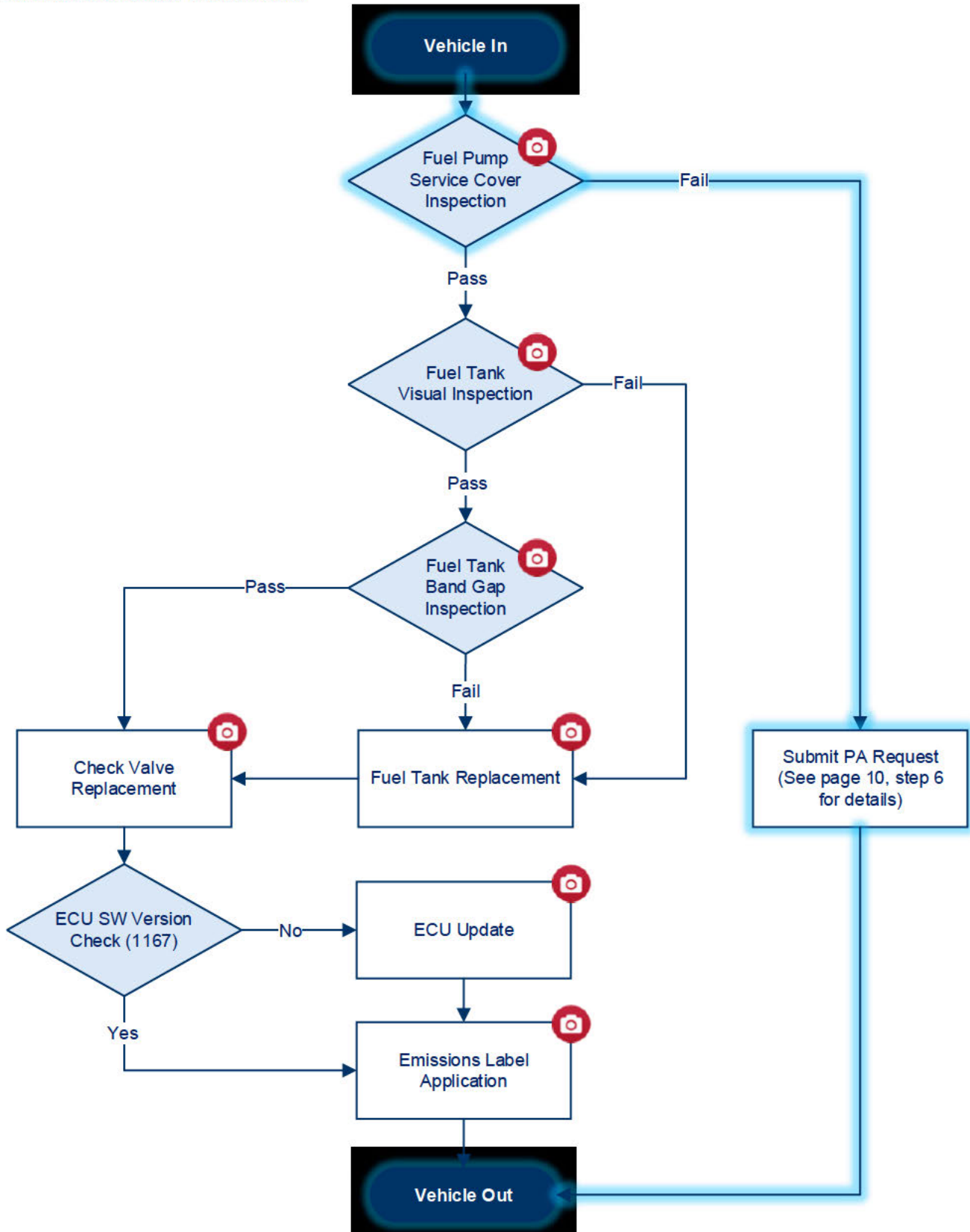
Vehicle Emission Recall – Proof of Correction					
License No.	Make	Model Year	Body Type	Vehicle Identification Number	
1	2	3	4	5	
Manufacturer:			2	Recall Number:	
			6		
The above described vehicle has been repaired, modified and/or equipped with new emission control devices to meet applicable California Emission Control Laws.					
Dealer's Name			Address, City, State and Zip		
7			8		
Date		Dealership's Authorized Signature			
9		x 10			
Return this certificate to DMV only when required – otherwise retain for your records.					
NP050-09006 8/14					

SUBJECT:

FUEL TANK EXPANSION - CHECK VALVE REPLACEMENT,
FUEL TANK INSPECTION, & ECM UPDATE (RECALL 286)

Appendix: Operation Code Reference Guide

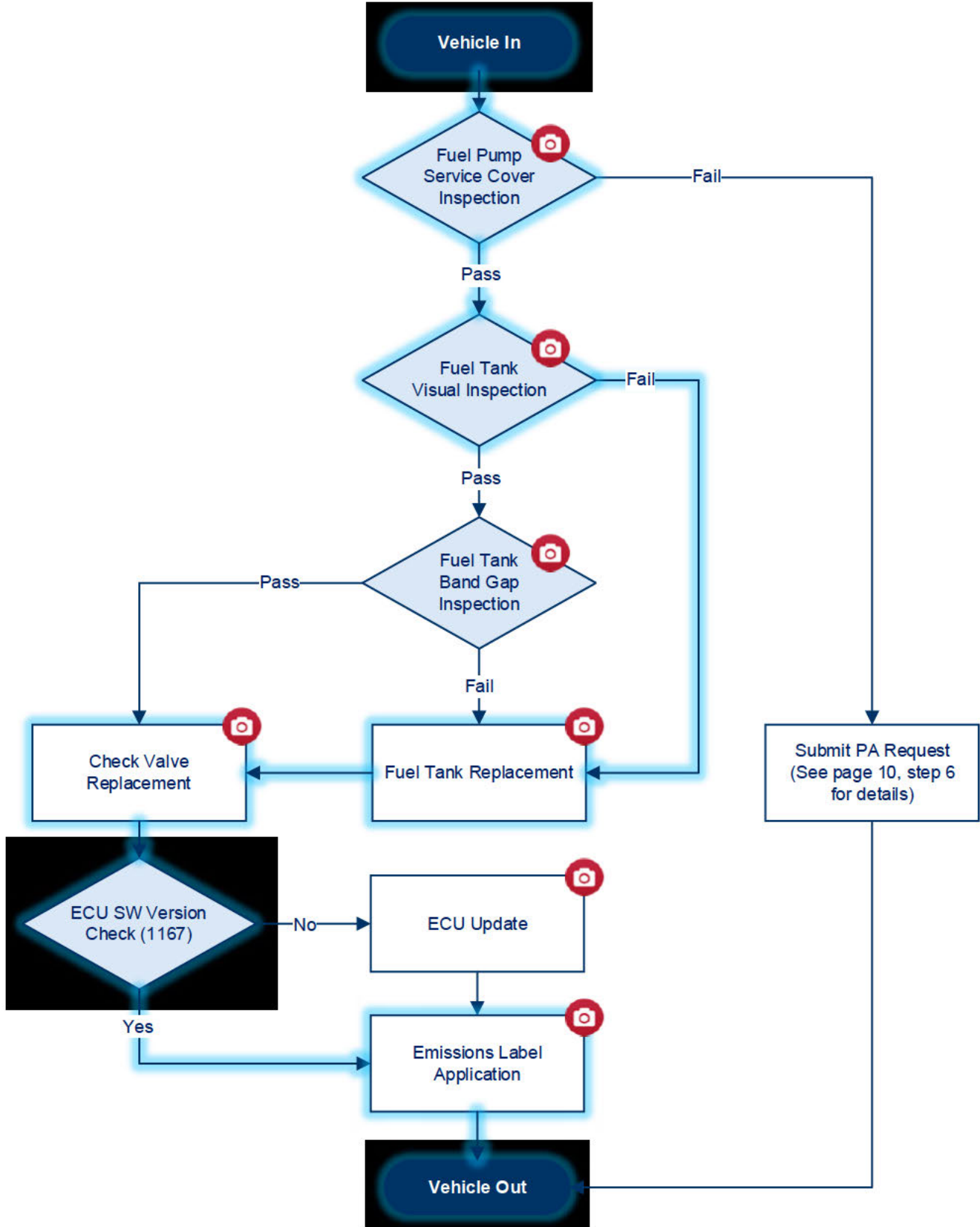
Op. Code **51D298R0** Flow Path:



SUBJECT:

**FUEL TANK EXPANSION - CHECK VALVE REPLACEMENT,
FUEL TANK INSPECTION, & ECM UPDATE (RECALL 286)**

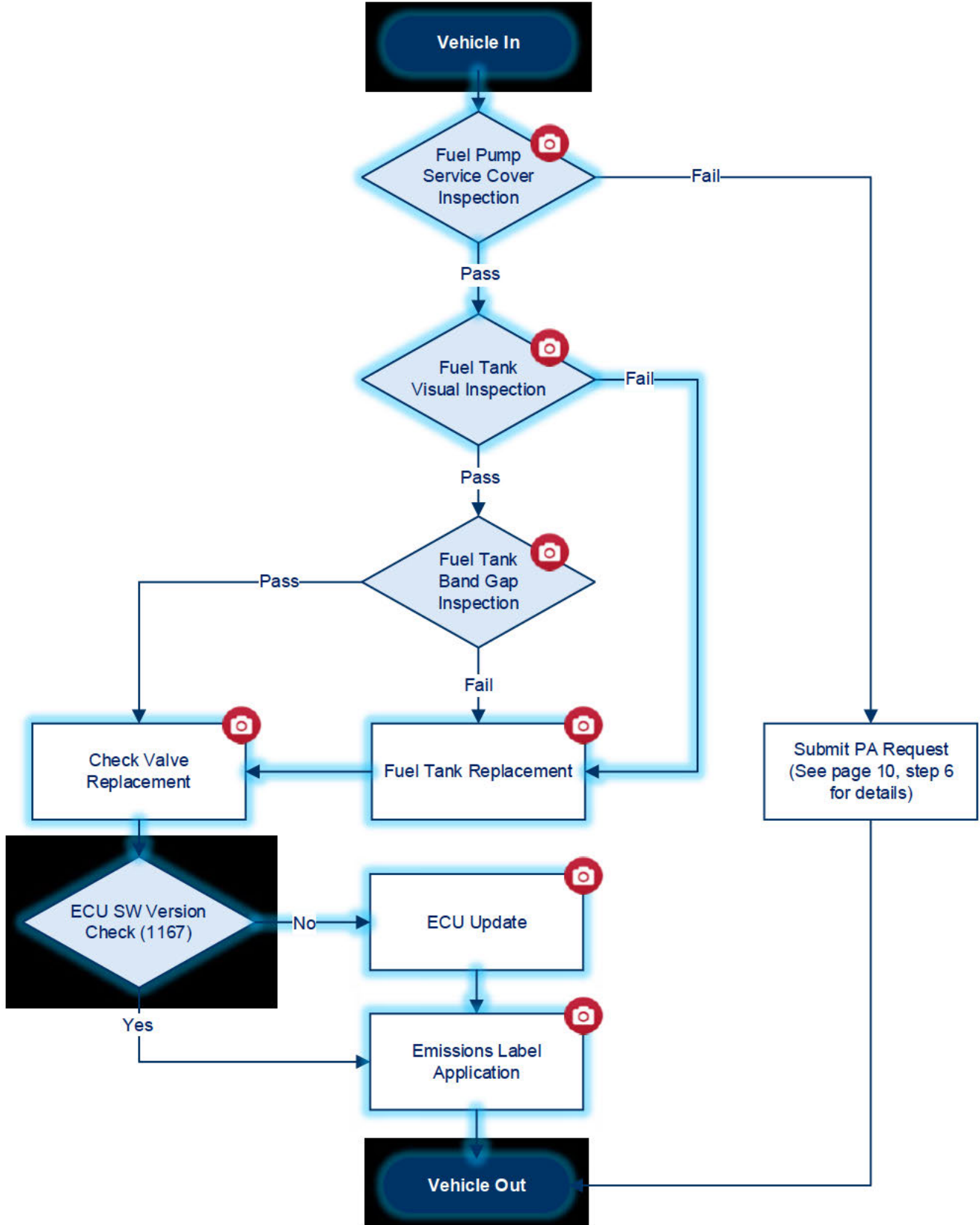
Op. Code **51D298R1** Flow Path:



SUBJECT:

**FUEL TANK EXPANSION - CHECK VALVE REPLACEMENT,
FUEL TANK INSPECTION, & ECM UPDATE (RECALL 286)**

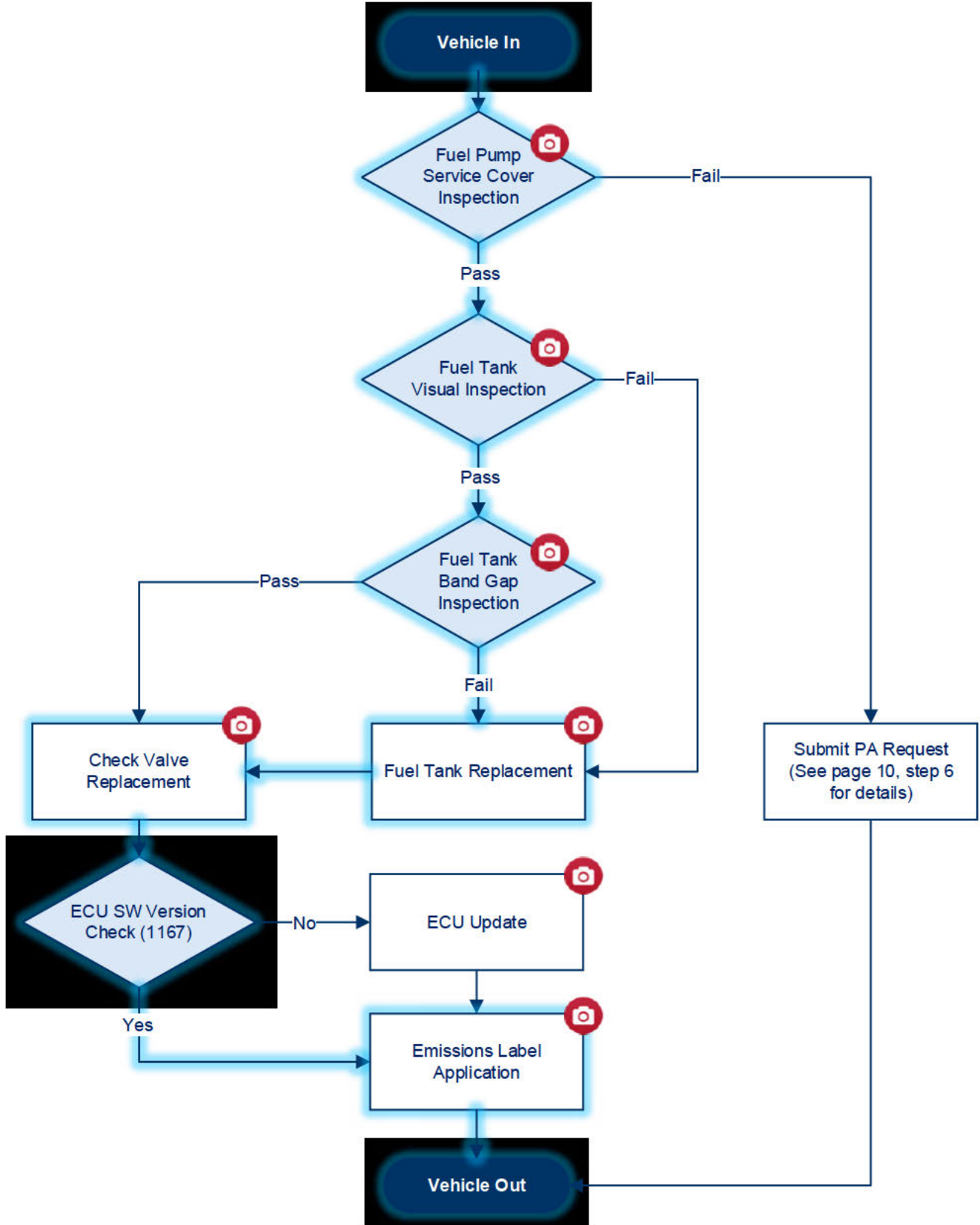
Op. Code **51D298R2** Flow Path:



SUBJECT:

**FUEL TANK EXPANSION - CHECK VALVE REPLACEMENT,
FUEL TANK INSPECTION, & ECM UPDATE (RECALL 286)**

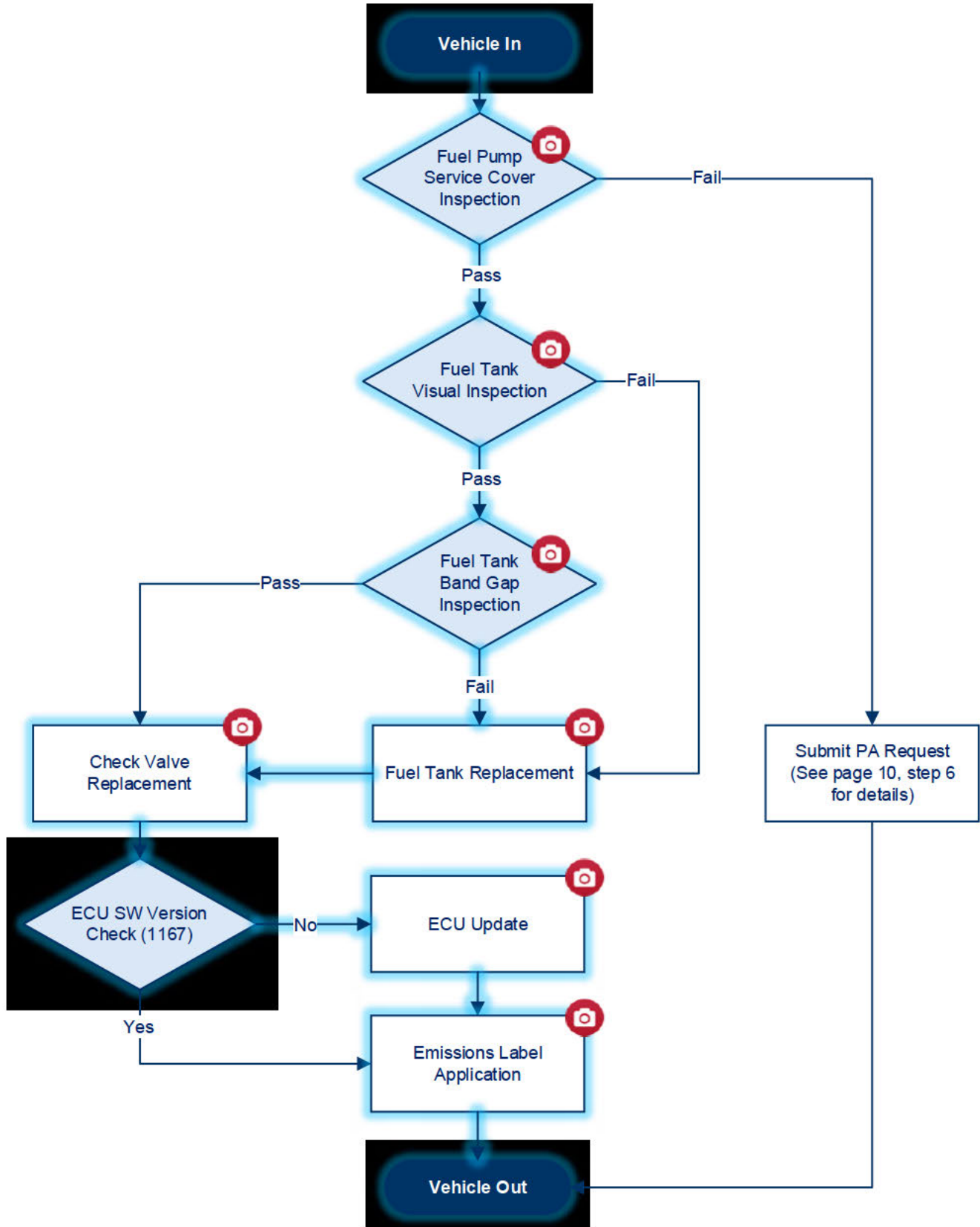
Op. Code **51D298R3** Flow Path:



SUBJECT:

**FUEL TANK EXPANSION - CHECK VALVE REPLACEMENT,
FUEL TANK INSPECTION, & ECM UPDATE (RECALL 286)**

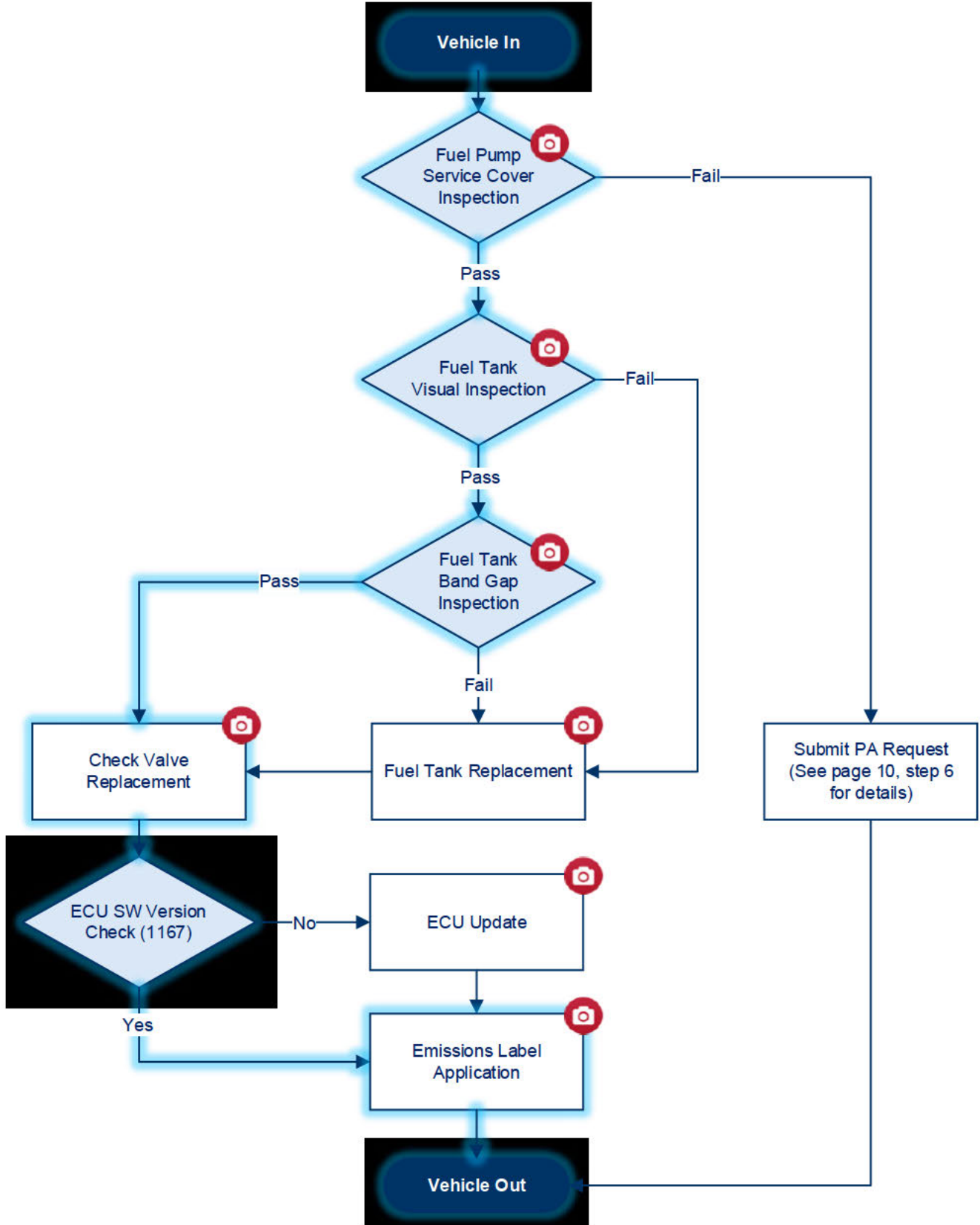
Op. Code **51D298R4** Flow Path:



SUBJECT:

**FUEL TANK EXPANSION - CHECK VALVE REPLACEMENT,
FUEL TANK INSPECTION, & ECM UPDATE (RECALL 286)**

Op. Code **51D298R5** Flow Path:



SUBJECT:

**FUEL TANK EXPANSION - CHECK VALVE REPLACEMENT,
FUEL TANK INSPECTION, & ECM UPDATE (RECALL 286)**

Op. Code **51D298R6** Flow Path:

