

REFERENCE:	Nova Bus Manuals
SECTION:	12: Interior Furnishing
RS N°:	MQR 7621-3055
EFFECTIVE IN PROD.:	N/A
TC RECALL N°:	N/A
NHTSA RECALL N°:	25V-773

APPLICATION DEADLINES: N/A
CLAIM REFERENCE NUMBER: SR5818

SUBJECT:	Driver Seat
JUSTIFICATION:	The driver seat belt may be pinched against the driver's partition and have improper seat belt retractive force. This may cause a FMVSS 209 S4.3 (j)(2)(i)(A) regulatory non-compliance. Under certain conditions, non-compliant seat belt may increase the risk of injury in case of a crash.

LEVEL	DESCRIPTION	DIRECT CHARGES		TIME
		LABOUR	MATERIAL	
1	Move the driver seat base plate forward.	Nova Bus	Nova Bus	1 h
2	–	–	–	–

MATERIAL REQUIRED PER VEHICLE

QTY	PART N°	REV.	DESCRIPTION
LEVEL 1			
–	–	–	–
LEVEL 2			
–	–	–	–

DISPOSAL OF PARTS

REMOVED PARTS ARE:	DISCARDED	RETAINED
	–	–

REVISION HISTORY

REV.	DATE	CHANGE DESCRIPTION	WRITTEN BY
NR	2025DE12	Initial release	Annie St-Jacques

CLIENT	ORDER	ROAD NUMBER		VIN (2NVY/4RKY...)		QTY
		FROM	TO	FROM	TO	
Washington Metropolitan Area Transit Authority - WMATA	LG13	[REDACTED]				5

**WARNING**

FOLLOW YOUR INTERNAL SAFETY PROCEDURES.

PROCEDURE

- 1.1. Park the vehicle on an even surface with the transmission on neutral.
- 1.2. Apply the parking brake and set the master control switch to the **stop** position.
- 1.3. Move the driver seat base plate to its most forward position (Figure 1). Torque the four bolts at 16 ± 1.5 lb-ft (22 ± 2 N·m).

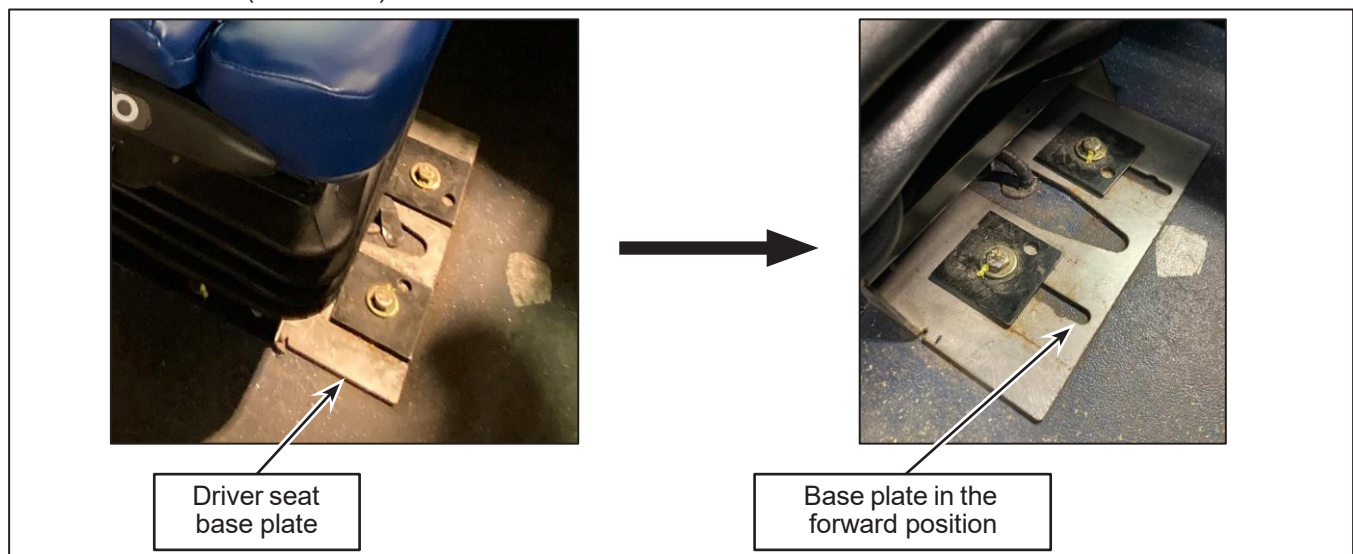


Figure 1 - Move the Seat Forward

- 1.4. The vehicle can be returned to service. ❖