



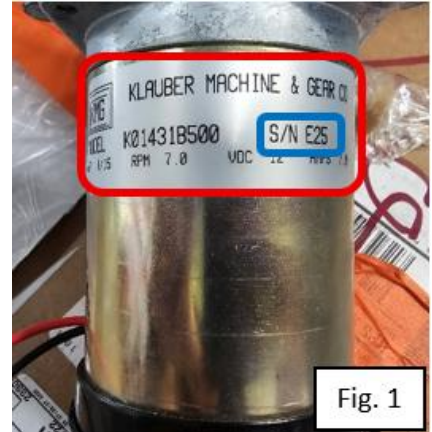
## KLAUBER MOTOR - INSPECT & REPLACE

<b>Bulletin Type:</b>	RECALL	<b>Publication Date:</b>	December 2025
<b>Bulletin #(s):</b>	25V-743 USA 2025-596 Canada	<b>Make(s):</b>	Entegra Coach
<b>Job Code(s):</b>	9903642	<b>Model(s):</b>	Aspire, Anthem, Cornerstone, Cornerstone Reserve
<b>Flat Rate(s):</b>	9903642A .50 HR - Klauber Motor Inspection only (Non Vanity Side) 9903642B 3.50 HR - Klauber Motors Inspection and Replacement	<b>Model Year(s):</b>	2025-2026

<b>Incident:</b>	Some Klauber slide out motors were sent out with the incorrect motor key.
<b>Affected Units:</b>	2025-2026 Entegra Coach Aspire, Anthem, Cornerstone, & Cornerstone Reserve.
<b>Parts Kit:25V-743</b>	Parts Kit #: 25V-743
	3 - MOTOR,SLIDEOUT POWER HEAD #KO1431B500 1 - PIN,COT HMRLK .13X1.00 ZCPLD (Set of 10)
<b>Misc. Tools &amp; Supplies:</b>	Screw Gun with square head, 3/8" hex head driver, and 90° Hammer Needle Nose Pliers Wrench or ratchet with 1/2" socket Caulk Gun Pry bar/Putty Knife Electrical Tape Locktite – or comparable adhesive
<b>Parts Return Information:</b>	Return Slide out motors to Jayco Inc. if the Jayco Compliance Department confirms the slide motors need replaced.

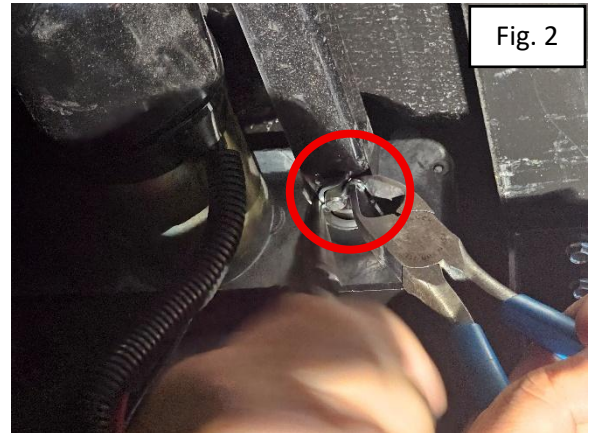
## KLAUBER MOTOR INSPECTION INSTRUCTIONS

1. Locate one of the slide motors on the coach.
  - a. **Note: The vanity slideout motor will be the most difficult to access. You will want to try and locate the Kitchen slide motor, located in the basement, or the bed slide motor, located in the bed base for ease of inspection.**
2. With one of the motors located, check the vendor tag on the motor for the date code of production for the motor. If you have the date code of **J24, D25, or E25**, the three slide out motors will need to be replaced. (Figure 1)
3. Order the three new slide out motors using the Compliance Order Form. You must include with order form:
  - a. Clear photo of the date code and serial number from the motor vendor tag.



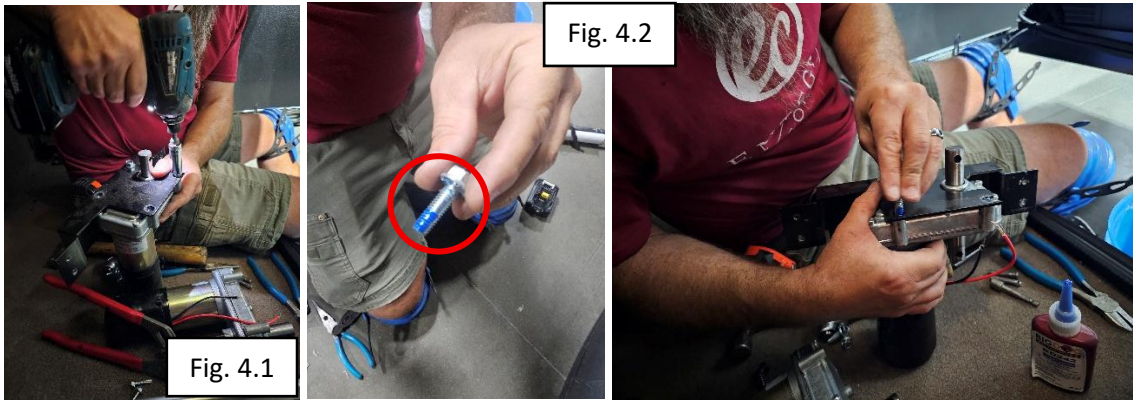
## KLAUBER MOTOR REPLACEMENT INSTRUCTIONS – KITCHEN SLIDEOUT

1. In the basement of the coach, pull out the rolling tray with the cooler, to gain access to the area where the slide motor is installed.
2. Remove the electrical tape from the Wagos for the motor. Then remove the wiring from the Wagos.
3. Using needle nose pliers, remove the cotter pins, from the drive shaft pins, that are connecting the motor to the drive shaft. (Figure 2)
  - a. **Note: If you are needing better access to the cotter pins, you can rotate the drive shaft with the motor using a screw gun battery or manually overriding the slideout with a wrench on the drive shaft directly.**
4. With the cotter pins removed, use a hammer to remove the drive shaft pins. (Figure 3.1)
5. Use a screw gun with a 3/8" hex head driver bit to remove the X4 fasteners securing the motor bracket to the coach. (Figure 3.2)

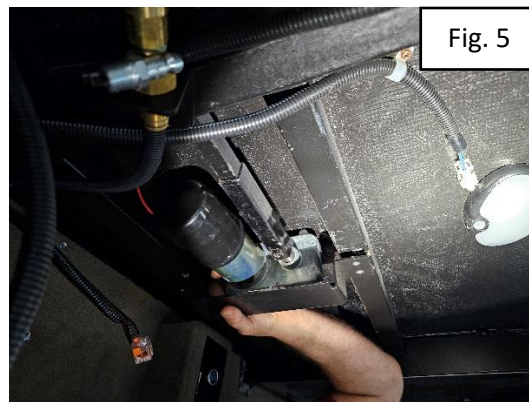


6. With the motor and bracket free, use a screw gun with 1/2" socket to remove the 4 bolts securing the motor to the mounting bracket. (Figure 4.1)
7. Secure the new motor to the mounting bracket using the same X4 bolts removed from the original motor. (Figure 4.2)

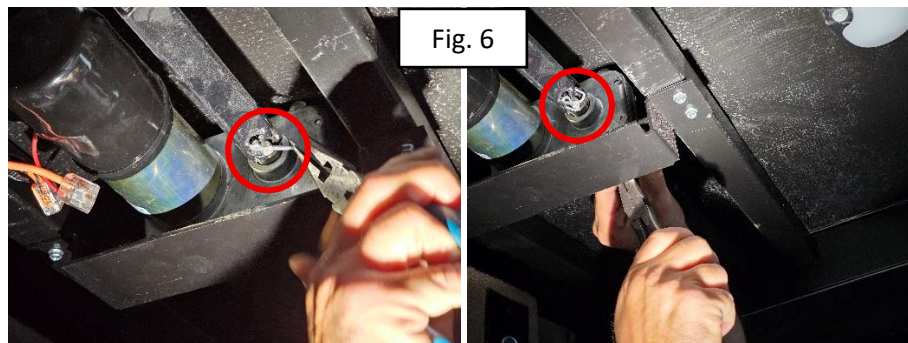
- a. **Note: Make sure to use Loctite or an equivalent on the bolts when reinstalling the new motor to the mounting bracket.**



8. Line up the new motor and drive shaft. Then resecure the mounting bracket to the coach using the original fasteners and existing screw holes. (Figure 5)



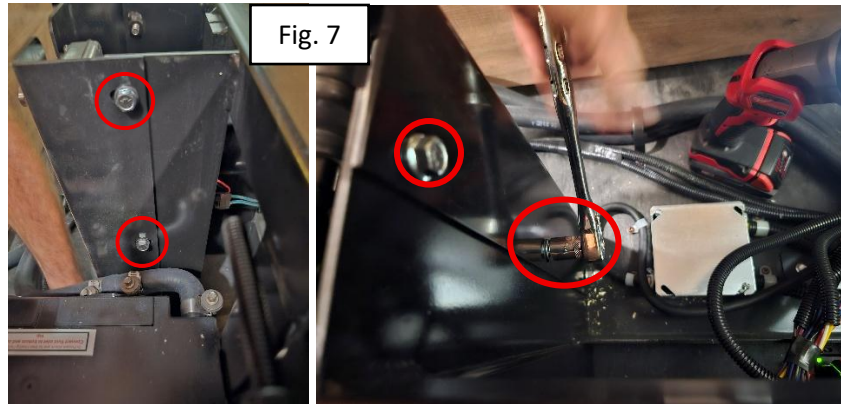
9. Use a hammer to reinsert the pins between the motor and the driveshaft.  
10. Rotate the driveshaft so the bottom of the driveshaft pins are accessible, insert new cotter pins into the driveshaft pins to secure them to the driveshaft. (Figure 6)



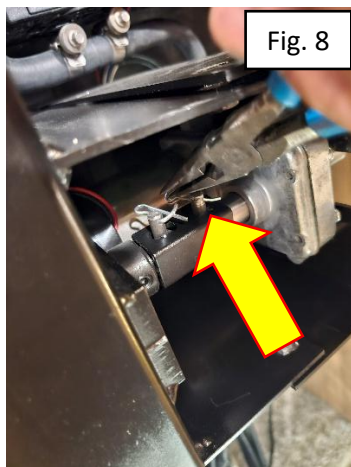
11. Reconnect the wiring in the Wagos. Black connects to the wire with the stripe, red to the solid color wire.  
a. **Note: Be sure to wrap the Wagos in electrical tape once they are fully connected.**  
12. Run the slideout all the way in and out to ensure the motor and slideout function properly.

## KLAUBER MOTOR REPLACEMENT INSTRUCTIONS – BED SLIDEOUT

1. Locate the bed in the coach and open the bed base to make the motor visible and accessible.
2. Using a ratchet or screw gun with 90° bit and 3/8" socket, remove the 6 screws holding the metal cover & mounting bracket over the motor. (Figure 7)



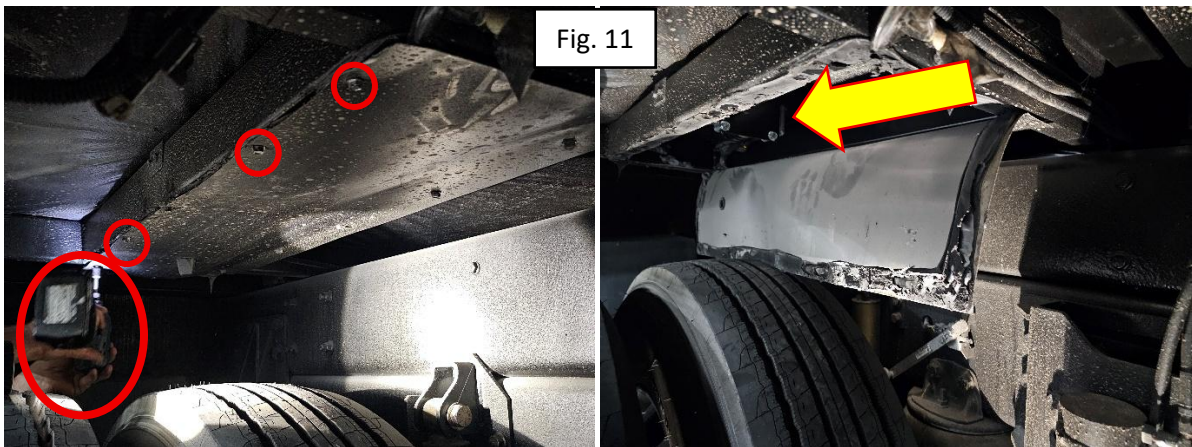
3. If needed, rotate the drive shaft of the motor to gain access to the cotter pins. Using needle nose pliers, remove only the front cotter pin between the motor and the drive shaft. (Figure 8)
4. Remove the pin holding the motor to the drive shaft.
5. Disconnect the Wagos for the motor wiring.
6. Remove the slide motor and front half of the metal cover that the motor is mounted to. (Figure 9)
7. With the motor and bracket free, use a screw gun with 1/2" socket to remove the 4 bolts securing the motor to the mounting bracket/cover. (Figure 10)



8. Line up the new motor with the mounting holes in the bracket and use the same X4 bolts removed from the original motor to secure the new motor to the bracket.
  - a. **Note: Make sure to use Loctite or an equivalent on the bolts when reinstalling the new motor to the mounting bracket.**
9. Use a screw gun battery or wrench to align the motor with the drive shaft.
10. Re-insert the driveshaft pin, then insert a new cotter pin to secure the driveshaft to the motor.
11. Reconnect the wiring to the motor in the Wagos. Blk connects to the wire with the stripe, red to the solid color wire.
  - a. **Note: Be sure to wrap the Wagos in electrical tape once they are fully connected.**
12. Re-insert all 6 mounting screws that hold the motor cover assembly together.
13. Run the slideout all the way in and out to ensure the motor and slideout function properly.

## KLAUBER MOTOR REPLACEMENT INSTRUCTIONS – VANITY SLIDEOUT

1. Locate the wheel well directly below the vanity slide.
2. Using a screw gun with a 3/8" hex head bit, remove all the fasteners holding the heat/debris shield to the coach. Then using a pry bar, fully remove the heat/debris shield so the motor is accessible. (Figure 11)



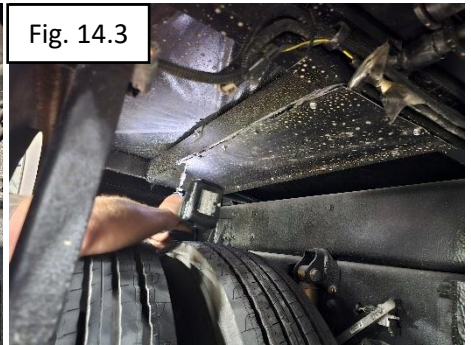
3. Use needle nose pliers to remove the cotter pins holding the drive shaft pins to the motor.
4. Remove the electrical tape covering the Wagos, then disconnect the motor wires from the Wagos.
5. Remove the pins that are securing the motor to the drive shaft.
6. Using a ratchet or screw gun with 90° bit and 1/2" Socket, remove the X4 bolts securing the slideout motor to the mounting bracket. (Figure 12)



7. Remove the old motor from the coach.
8. Line up the new motor with the drive shaft and mounting holes in the bracket. Use the same X4 bolts removed from the original motor to secure the new motor to the bracket. (Figure 13)
  - a. **Note: Make sure to use Loctite or an equivalent on the bolts when reinstalling the new motor to the mounting bracket.**



9. Use a hammer to work the drive shaft pins back in between the motor and drive shaft.
10. If needed, use a screw gun battery or wrench to rotate the drive shaft. Insert the new cotter pins into the drive shaft pins to secure it to the coach.
11. Reconnect the wiring to the motor in the Wagos. Blk connects to the wire with the stripe, red to the solid color wire.
  - a. **Note: Be sure to wrap the Wagos in electrical tape once they are fully connected.**
12. Run the slideout all the way in and out to ensure the motor and slideout function properly.
13. Use a caulk gun to run a bead of Sika all the way around the perimeter of the heat/debris shield. (Figure 14.1)
14. Press the shield firmly against the coach to ensure a tight fit. (Figure 14.2) Note: You can tap the edges of the shield with a hammer to help set the new Sika between the frame and shield.
15. Replace all the original fasteners removed from the shield. (Figure 14.3)
  - a. **Note: You may want to add additional fasteners to help keep the shield held in place.**



*Jayco's sole obligation under our limited warranty is to repair or replace defective materials and/or workmanship deemed our responsibility as determined by Jayco in our sole discretion. Jayco reserves the right to use new and/or remanufactured parts or materials of similar quality to complete any work, and to make parts and/or design changes as appropriate without notice to anyone. Jayco designs and/or materials changes are done without obligation to incorporate such changes in previously manufactured product. Jayco makes every reasonable effort to ensure field remedies will not adversely affect performance and/or safety of the unit. This field remedy is not intended to extend to future performance of this RV, or any of its materials, components or parts beyond the standard warranty period. The RV owner's obligation to notify Jayco, or one of its independent, authorized dealers, of a claimed defect does not modify any obligation placed on the RV owner to contact Jayco directly when attempting to pursue remedies under state or federal law.*

903 South Main Street • P.O. Box 460 • Middlebury, IN 46540