

**ATTENTION:** Mercedes-Benz Dealer Principals, General Managers, Sales Managers, Service Managers & Parts Managers

## Safety Recall Launch Notification

November, 2025

<b>Campaign #</b>	<b>NHTSA ID</b>	<b>Campaign Codeword</b>	<b>Check Spot Welds on Longitudinal Frame Member</b>
2025 110007	25V725	VS3RASCHW	

### Campaign Details

<b>Total Recall Population</b>	366	<b>Model(s)/ Platform(s)</b>	Sprinter (907)
<b>Vehicles in Dealer Inventory</b>	0		
<b>Model Year(s)</b>	2023-2024		
<b>Issue</b>	Mercedes-Benz AG, the manufacturer of Mercedes-Benz Sprinter vehicles, has determined that on certain Sprinter (907 platform) vehicles, the number of spot welds on the longitudinal frame member of the Body in White might not meet specifications. As a result, the seat mounts for the third-row passenger seats might not sufficiently withstand the loads during a crash, which could increase the risk of injury.		
<b>What We're Doing</b>	MBUSA will conduct a voluntary recall. An authorized Mercedes-Benz Sprinter dealer will check the right longitudinal frame member on the affected vehicles and rework it, if necessary.		
<b>Remedy</b>	The remedy is available and parts can be ordered at this time.		
<b>Launch Date</b>	Affected VINs will be flagged in VMI as " <b>OPEN</b> " on Friday, December 2, 2025. The campaign will be visible on the <a href="http://www.NHTSA.gov">www.NHTSA.gov</a> website and may generate questions from customers.		
<b>Approximate Customer Notification Date</b>	Monday, December 15, 2025 (subject to change) Final customer letters can be found at <a href="http://www.mbvans.com/en/recall-information">www.mbvans.com/en/recall-information</a> or <a href="http://www.NHTSA.gov">www.NHTSA.gov</a> at the time of mailing.		
<b>Warranty Claim Notice</b>	Please note the campaign will close after the warranty claim has been submitted. This change can take at least one day to reflect in Net Star VMI.		

**Given this notice, it is a violation of federal law for a dealer to sell or lease any new vehicle in dealer inventory covered by this notification until the vehicle has been repaired. Violations of federal law may result in civil penalties.**

- Loaner and demonstrator vehicles may continue to be driven, but must not be retailed until repaired.
- Once the remedy is available, vehicles will be flagged as "OPEN" and Work Instructions will be available.
- As a matter of normal service process, please check for other repair measures that might be applicable to the vehicle(s).

**Additionally, given this notice, it is a violation of federal law for car rental companies to rent vehicles covered by this notification until the vehicle has been repaired. Violations of federal law may result in civil penalties.**

While we regret any inconvenience this may cause, MBUSA is determined to maintain a high level of vehicle quality and customer satisfaction. Please refer all customer inquiries to the Customer Care Center at 1-800-FOR-MERCEDES.



**Model**      **907**  
**with code IR6 (Wheelbase 4325 mm, overhang 1615 mm)**  
**and code X2B (Weight variant 4,300 kg)**

**Operation no. of the operation texts or standard texts and flat rates**

Category	Op. no.	Operation text	Time	Damage Code	Codeword
L	11 0014	Operations: Check rear right and left longitudinal member	0.4 hrs	31 900 05	VS3RASCHW
L	11 0015	Operations: Retrofit rear right and left longitudinal member (after check)	0.9 hrs	31 900 05	VS3RASCHW
L	12 1725	Operations: Extra work for removing/installing wheel and tire assembly when mounting with wheel lift dolly	0.1 hrs	31 900 05	VS3RASCHW

**Important!**

Place blind rivets if spot welds are missing on rear longitudinal members.

**Rear right longitudinal member (1) on outside: 9 blind rivet**

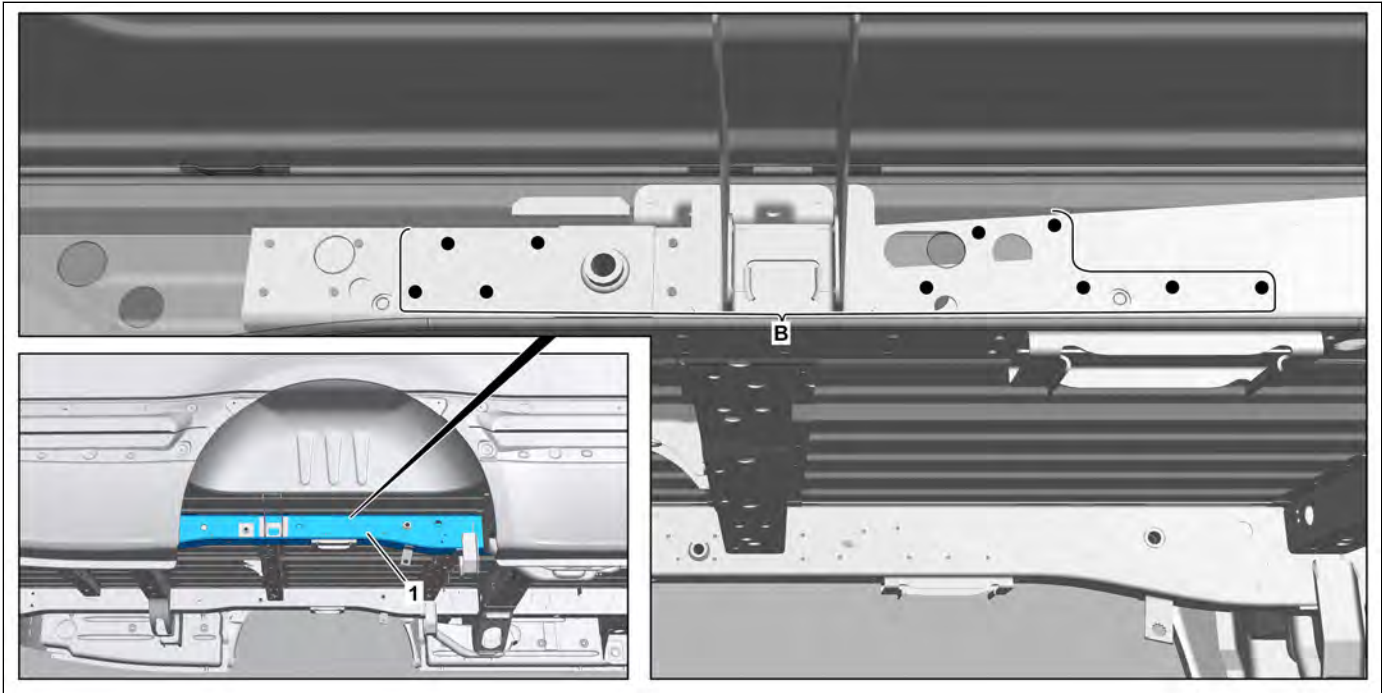
**Rear right longitudinal member (1) on inside: 10 blind rivet**

**Rear left longitudinal member (2) on inside: 1 blind rivet**

1    *Right rear longitudinal member*



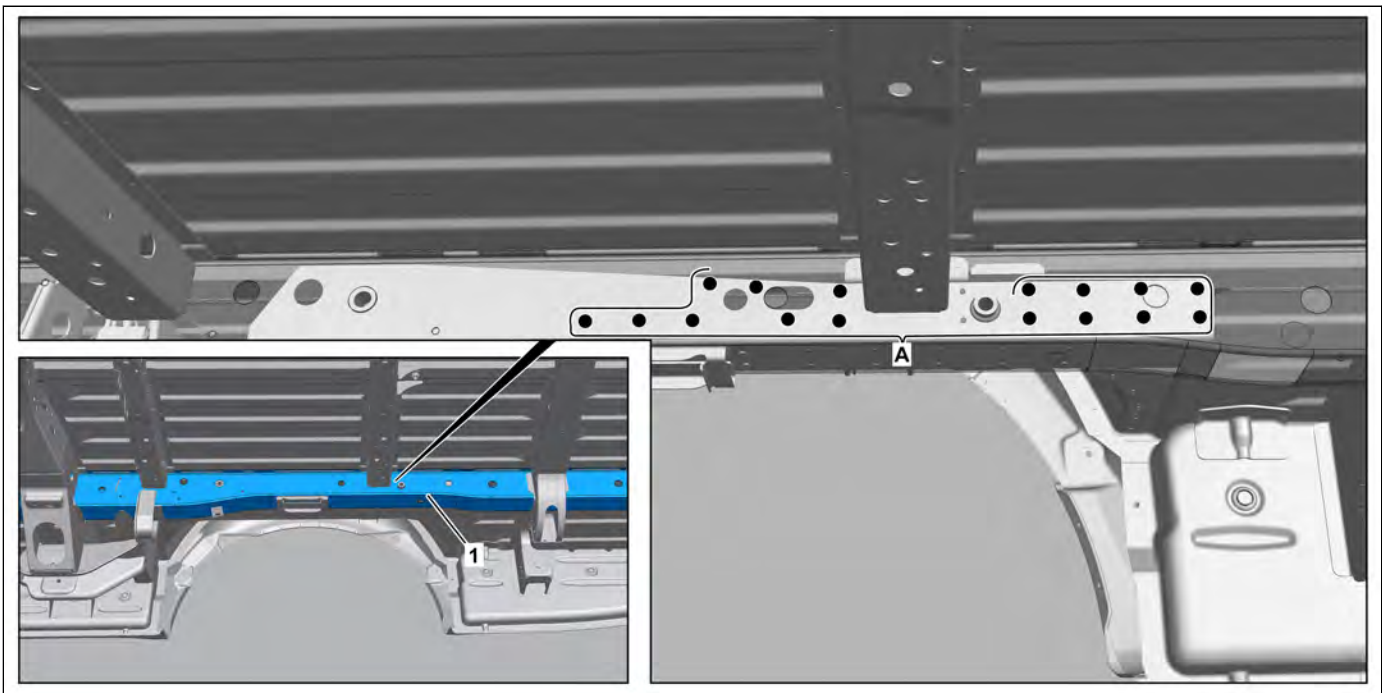
D61.25-A198-76



D61.25-A199-79

**Overview of spot welds: Rear right longitudinal member on outside**

- 1 Right rear longitudinal member



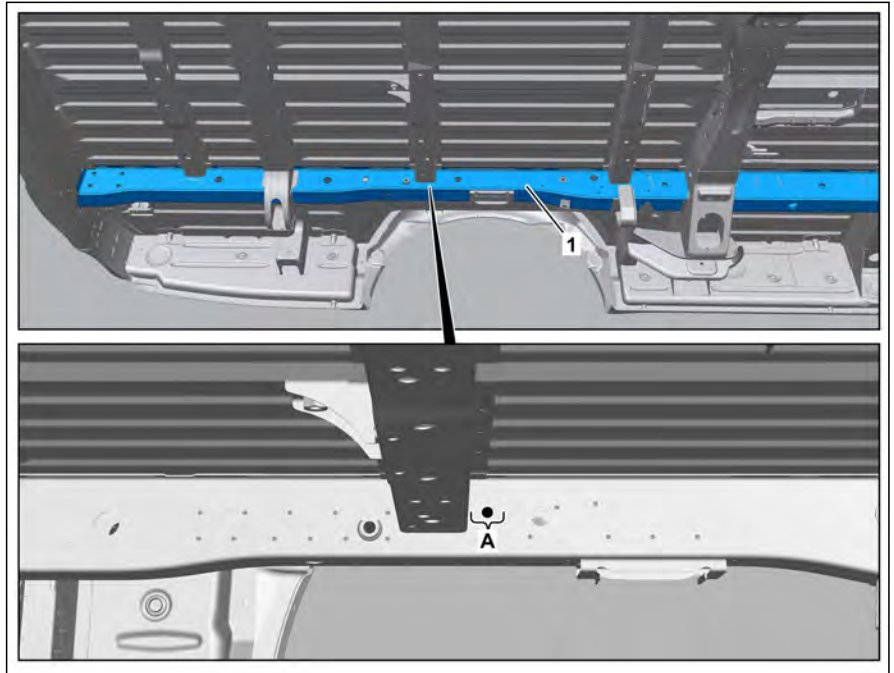
D61.25-A200-79

**Overview of spot welds: Rear right longitudinal member on inside**

- 1 Right rear longitudinal member





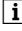
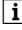
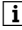

**Overview of spot welds: Rear left longitudinal member on inside**

2 Left rear longitudinal member



D61.25-A208-76

<b>⚠ Danger</b>	<b>Risk of death</b> caused by vehicle slipping or toppling off of the lifting platform.	Align vehicle between vehicle lift columns and position the four support plates at the vehicle lift support points specified by the vehicle manufacturer.	AS00.00-Z-0010-01A
<b>⚠ Caution</b>	<b>Risk of injury</b> caused by scraping or cutting body parts on sharp vehicle parts	Always wear protective gloves when working on or near sharp and non-deburred vehicle parts. Deburr repair panels.	AS00.00-Z-0017-01A
<b>ℹ Notice</b>	General information on body repair		AH60.00-P-0001-01KOA
<b>🔍</b>	<b>Check</b>		
1	Check if vehicle is affected by measure.		
<b>🗑</b>	<b>Remove</b>		
2	Raise vehicle.		
<b>ℹ Notice</b>	Special instructions for lifting and supporting vehicle		AH00.60-P-0100-01TS
<b>🔧 AR</b>			AR00.60-D-1000-04TS
<b>🔧 WS</b>	000 588 26 80 00 Adapter		WS00.00-Z-0067KOB
<b>🔧 WS</b>	000 588 41 80 00 Adapter		WS00.00-P-0321B
<b>🔧 WS</b>	000 588 27 80 00 Adapter		WS00.00-P-0068B
3	Remove right rear wheel.		
<b>🔧 AR</b>			AR40.10-D-1100TS

	<b>Install</b>		
 <b>Danger</b>	<b>Risk of explosion</b> caused by paint vapors igniting. <b>Risk of poisoning</b> caused by inhaling paint vapors.	No smoking! No open fire! Use respiratory protection, protective clothing, gloves, safety glasses and protective skin cream. Ensure that the area is well ventilated.	AS98.00-Z-0002-01A
4	Check and subsequently reinforce rear right and left longitudinal member (1, 2).		<b>Page 4</b>
 <b>Notice</b>	Notes on paintwork repairs General information on riveting 000 588 15 84 00 Heat gun		AH98.00-P-9408-02A AH60.00-P-0003-01N WS54.00-P-0125B
 <b>WS</b>		 <b>Commercially available devices/ tools</b> Drill bit 6.7 mm Round wire bead or scraper Wet and dry vacuum cleaner  For orientation purposes, areas (A, B) on the rear longitudinal member (1, 2) are reinforced. Instead of resistance spot welds, as specified ex factory, blind rivets are used here. Seam seal 300 ml in black or white Underfloor protection Cavity preservation (free of solvents), 1 liter Blind rivet Y2 6.5×12.5 (clamping range 2 mm to 5 mm, draw-off strength min. 19 kN)	<a href="#">BR00.45-Z-1003-01A</a> <a href="#">BR00.45-Z-1032-05A</a> <a href="#">BR00.45-Z-1003-05A</a> <a href="#">BR00.45-Z-1012-13A</a>
5	Clean repair area.	 <b>Commercially available devices/ tools</b> Wet and dry vacuum cleaner	
6	Attach right rear wheel.		AR40.10-D-1100TS
			
7	Lower vehicle.		

#### Repair materials

Number	Designation	Order number
BR00.45-Z-1003-01A	Seam seal 300 ml in black or white	A 005 989 63 20
BR00.45-Z-1003-05A	Cavity preservation (free of solvents), 1 liter	A 000 986 72 70 10
BR00.45-Z-1012-13A	Blind rivet Y2 6.5×12.5 (clamping range 2 mm to 5 mm, draw-off strength min. 19 kN)	A 004 990 16 97
BR00.45-Z-1032-05A	Underfloor protection	A 005 989 64 20 09

#### Parts ordering note

Part no.	Designation	Quantity
A 004 990 16 97	Rivet	n. B. (20)
	Additional replacement part scopes, small parts and consumable materials required for carrying out this service measure must be replaced in accordance with the information in the repair documents referenced in this document. These must be determined according to the vehicle identification number (FIN) via the "XENTRY Parts Information" system and, whilst not listed in the parts ordering note, they are included in the costing.	

SM61.25-D-0007-01SG	Subsequently rivet right and left rear longitudinal member (code: VS3RASCHW, acc. no.: 31 900 05)		
---------------------	---	--	--

**Model 907**  
**with code IR6 (Wheelbase 4325 mm, overhang 1615 mm)**  
**and code X2B (Weight variant 4,300 kg)**

**Repair materials**

Number	Designation	Order number
BR00.45-Z-1003-05A	Cavity preservation (free of solvents), 1 liter	A 000 986 72 70 10
BR00.45-Z-1012-13A	Blind rivet Y2 6.5×12.5 (clamping range 2 mm to 5 mm, draw-off strength min. 19 kN)	A 004 990 16 97
BR00.45-Z-1032-05A	Underfloor protection	A 005 989 64 20 09

**i** Refer to the superordinate service document for further information.  
 Observe safety notes in the superordinate service document.

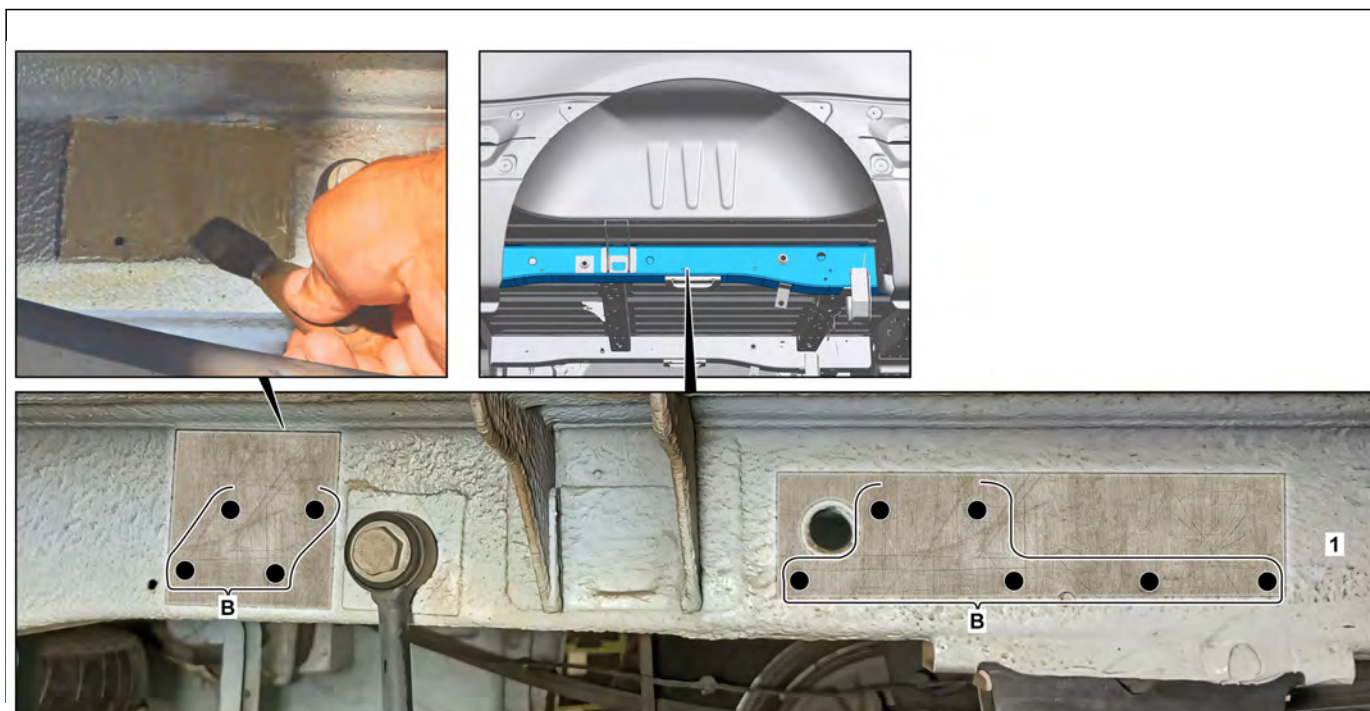
**Check**

**i** Place blind rivets if spot welds are missing on rear longitudinal members.

**Rear right longitudinal member (1) on outside: 9 blind rivet**

**Rear right longitudinal member (1) on inside: 10 blind rivet**

**Rear left longitudinal member (2) on inside: 1 blind rivet**



**Rear right longitudinal member (1) on outside**

1 Check whether spot welds are present on rear right longitudinal member (1) (area B).

**i** The picture serves as an overview for this purpose.  
Spot welds should be present at these points.  
Select any location and check randomly whether spot welds are present there. To do so, remove underbody protection in this area (see picture at top left).

If spot welds are present:



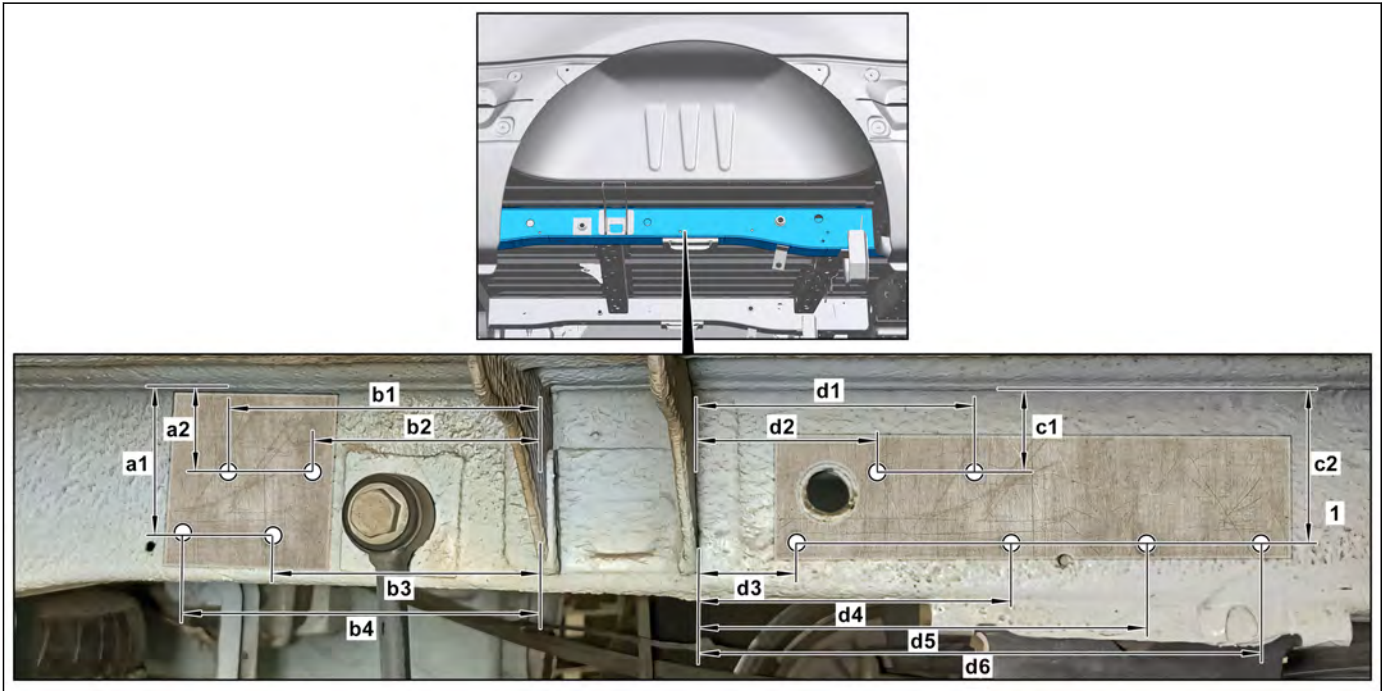
Apply primer and underbody protection at checked position and end measure.

If spot welds are not present:



Continue with operation step 2.

- 2 Remove remaining underbody protection from rear right longitudinal member (1) in area of holes to be drilled (areas B).



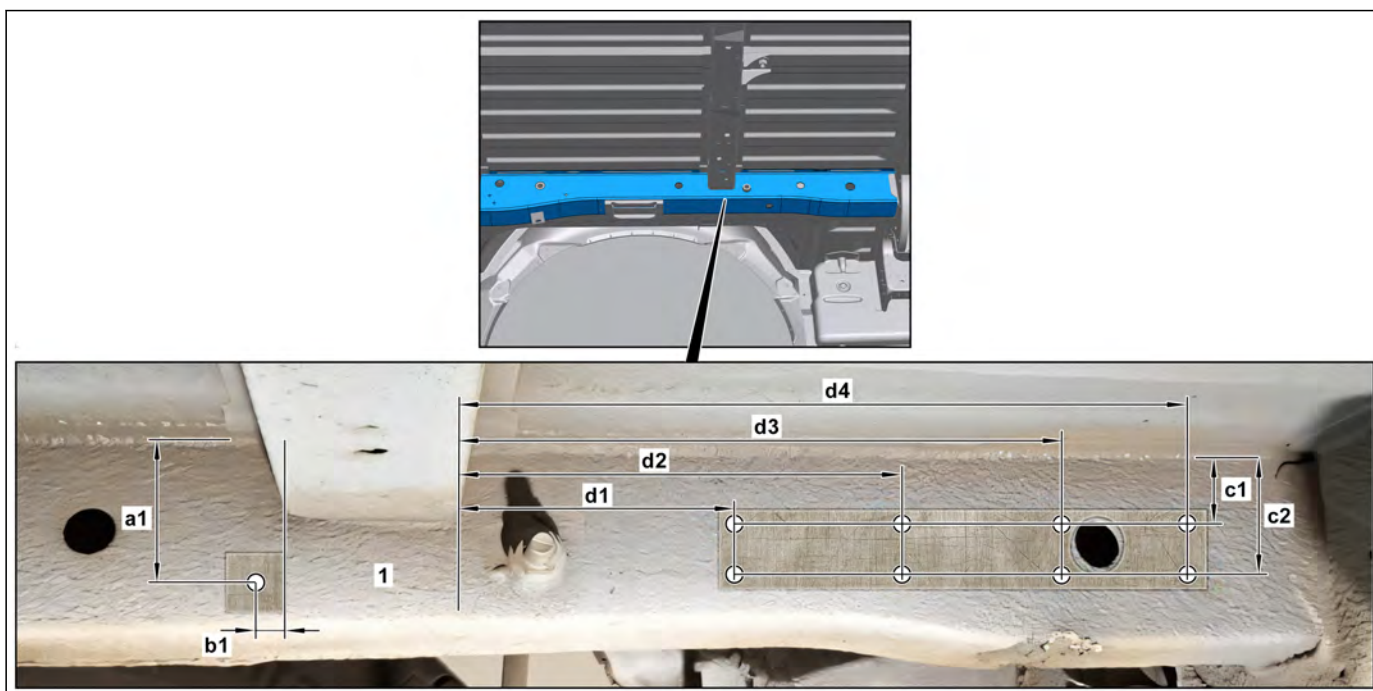
D61.25-A202-79

**Rear right longitudinal member (1) on outside**

- |    |                            |    |                            |
|----|----------------------------|----|----------------------------|
| a1 | Dimension (approx. 67 mm)  | c2 | Dimension (approx. 63 mm)  |
| a2 | Dimension (approx. 42 mm)  | d1 | Dimension (approx. 112 mm) |
| b1 | Dimension (approx. 145 mm) | d2 | Dimension (approx. 72 mm)  |
| b2 | Dimension (approx. 98 mm)  | d3 | Dimension (approx. 44 mm)  |
| b3 | Dimension (approx. 123 mm) | d4 | Dimension (approx. 125 mm) |
| b4 | Dimension (approx. 160 mm) | d5 | Dimension (approx. 171 mm) |
| c1 | Dimension (approx. 33 mm)  | d6 | Dimension (approx. 217 mm) |

**Reinforce**

- |   |  |   |  |
|---|--|---|--|
| 3 | Remove underbody protection from rear right longitudinal member (1) in area of holes to be drilled.  | 5 | Drill holes in rear right longitudinal member (1) with Ø 6.7 mm bit. |
| 4 | Mark positions for holes on rear right longitudinal member (1).<br><b>i</b> Observe dimensions (a1, a2, b1, b2, b3, b4, c1, c2, d1, d2, d3, d4, d5, d6).<br>A drilling template can be created to reduce labor time when working on several vehicles in the same dealership. | 6 | Deburr holes on rear right longitudinal member (1).                  |
|   |  | 7 | Remove drill chips.  |
|   |  | 8 | Apply primer to holes.   |



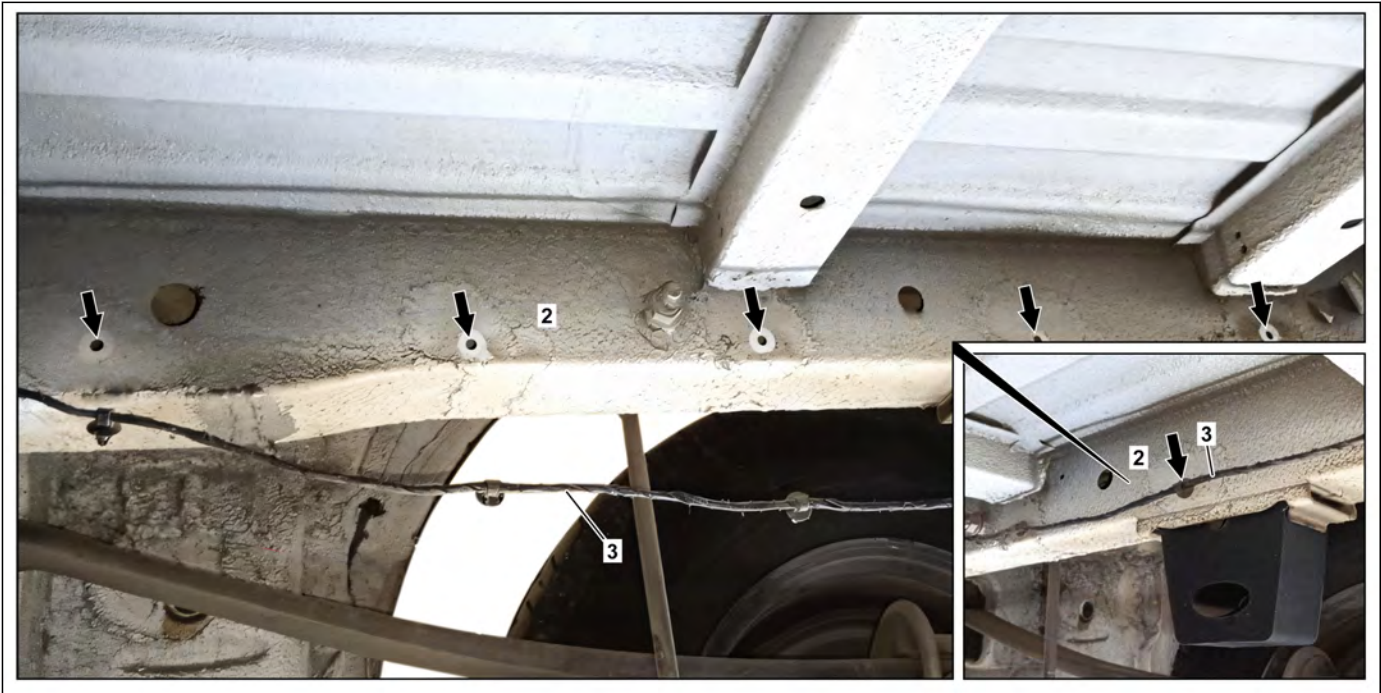
D61.25-A203-79

**Rear right longitudinal member (1) on inside**

- a1 Dimension (approx. 64 mm)
- b1 Dimension (approx. 21 mm)
- c1 Dimension (approx. 37 mm)
- c2 Dimension (approx. 64 mm)

- d1 Dimension (approx. 67 mm)
- d2 Dimension (approx. 114 mm)
- d3 Dimension (approx. 161 mm)
- d4 Dimension (approx. 208 mm)

- |  |  |
|--|--|
| <p>9 Remove underbody protection from rear right longitudinal member (1) in area of holes to be drilled.</p>   | <p>11 Drill holes in rear right longitudinal member (1) with Ø 6.7 mm bit.</p>                 |
| <p>10 Mark positions for holes on rear right longitudinal member (1).<br/> <i>i</i> Observe dimensions (a1, b1, c1, c2, d1, d2, d3, d4).<br/>         A drilling template can be created to reduce labor time when working on several vehicles in the same dealership.</p> | <p>12 Deburr holes on rear right longitudinal member (1).</p> <p>13 Apply primer to holes.</p> |

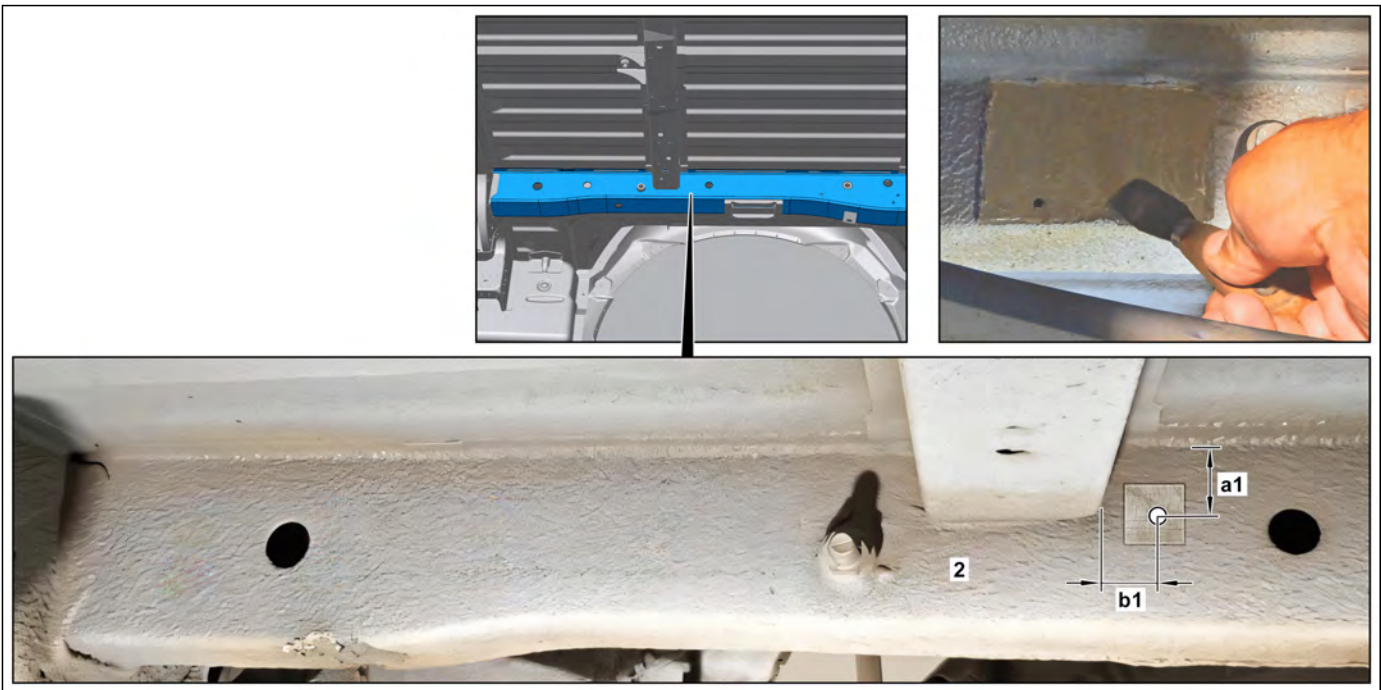


D61.25-A201-79

**Rear left longitudinal member (2) on inside**

- 14 Remove electrical wiring harness (3) from rear left longitudinal member (2) as far as necessary and position outside of working area.  
*i* To do so, unclip retaining clips of electrical wiring harness (3) from holes (arrows).

If retaining clips are damaged,  
 ↓  
 Replace respective retaining clip.



D61.25-A211-79

**Rear left longitudinal member (2) on inside**

a1 Dimension (approx. 37 mm)

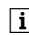
b1 Dimension (approx. 21 mm)

15 Remove underbody protection from rear left longitudinal member (2) in area of hole to be drilled.

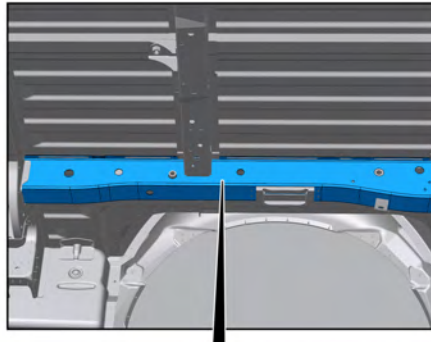
17 Drill hole in rear left longitudinal member (2) with  $\varnothing$  6.7 mm bit.

16 Mark positions for hole on rear left longitudinal member (2).

18 Deburr hole on rear left longitudinal member (2).

 Observe dimensions (a1, b1).

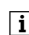
19 Apply primer to hole.

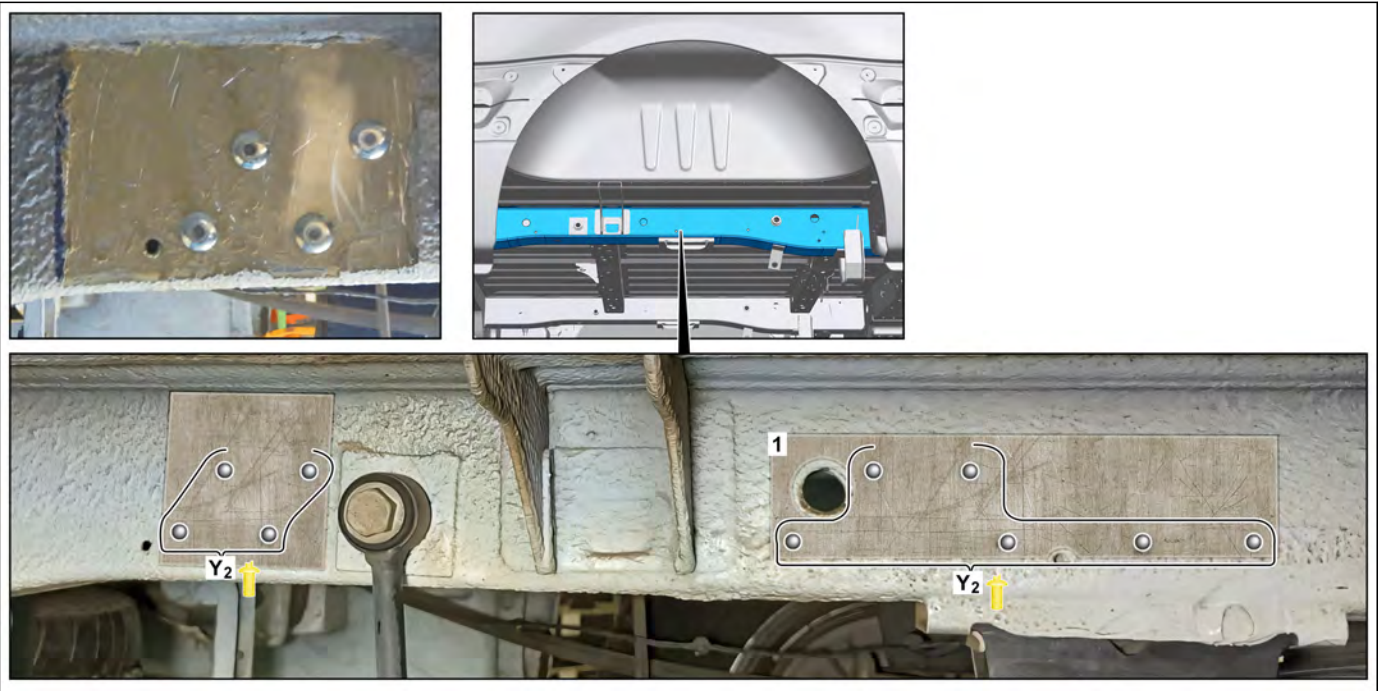


D61.25-A211-79

**Rear left longitudinal member (2) on inside**

20 Rivet rear left longitudinal member (2) with blind rivet 6.5x12.5 (area Y<sub>2</sub>).

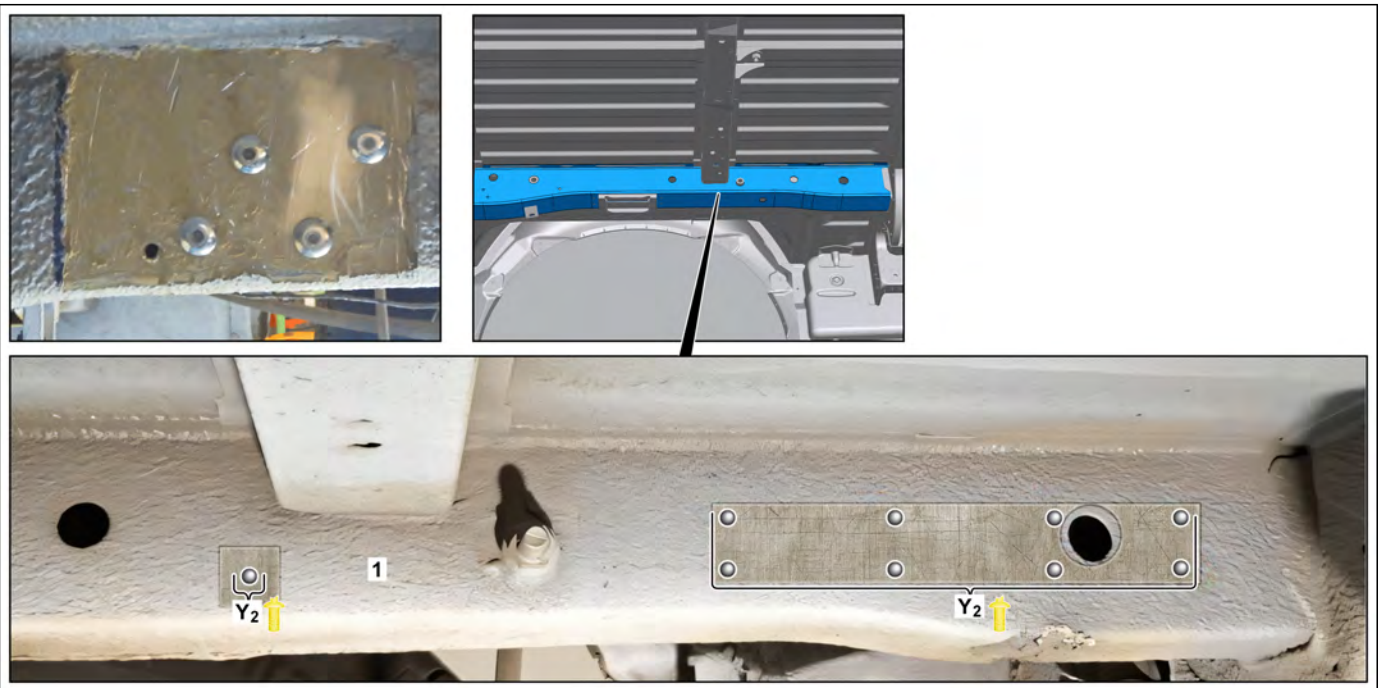
 Coat respective rivet with seam seal before fitting.



D61.25-A204-79

- 21 Rivet rear right longitudinal member (1) with blind rivet 6.5x12.5 (areas Y2).

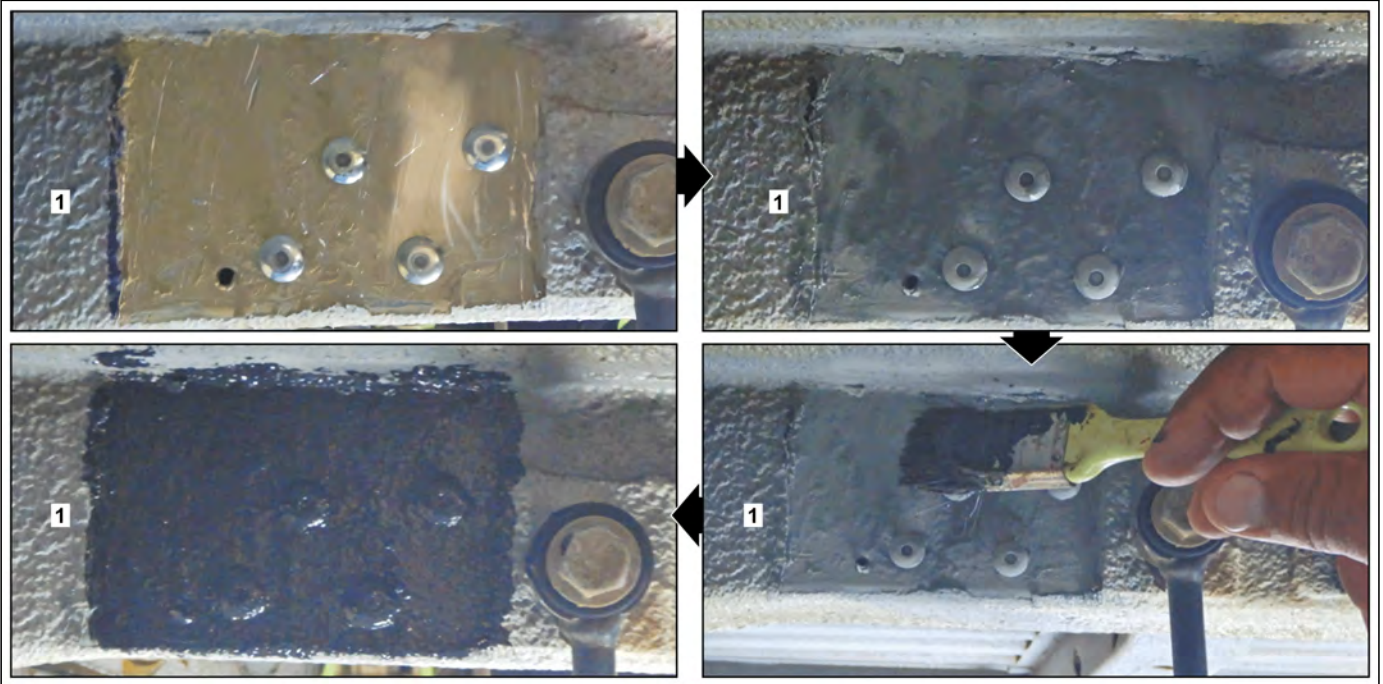
**i** Coat respective rivet with seam seal before fitting.



D61.25-A205-79

- 22 Rivet rear right longitudinal member (1) with blind rivet 6.5x12.5 (areas Y2).

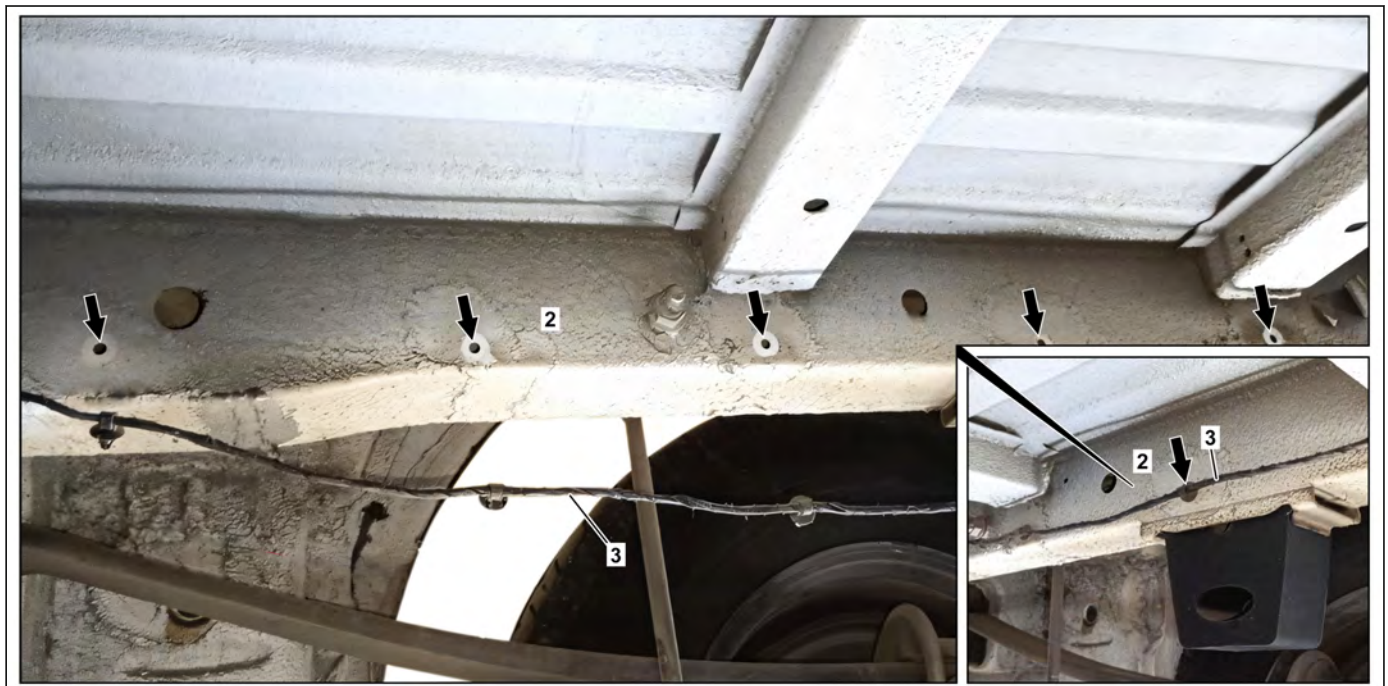
**i** Coat respective rivet with seam seal before fitting.



D61.25-A206-79

- 23 Apply primer to rear longitudinal members in repair areas.  
*i* The area shown on the rear right longitudinal member (1) serves as an example and the primer must be applied accordingly everywhere in the area of the repair.

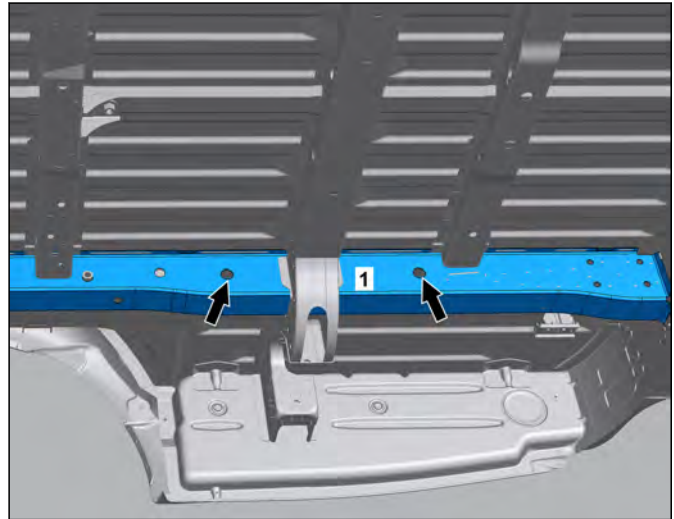
- 24 Apply underbody protection to rear longitudinal members in repair areas.  
*i* The area shown on the rear right longitudinal member (1) serves as an example and the underbody protection must be applied accordingly everywhere in the area of the repair.



D61.25-A201-79

25 Attach electrical wiring harness (3) at rear right longitudinal member (2).  
**i** To do so, clip retaining clips of electrical wiring harness (3) into holes (arrows).

26 Add cavity preservation in rear longitudinal members.  
**i** Introduce cavity preservation through openings (arrows) into rear right longitudinal member (1). The operation step is shown on the rear right longitudinal member (1) as an example and must be performed in the same way on the rear left longitudinal member (2).



D61.25-A207-81