



**IMPORTANT SERVICE  
INFORMATION FOR:**

- ✓ SERVICE MANAGER
- ✓ SERVICE ADVISOR
- ✓ TECHNICIAN
- ✓ PARTS DEPARTMENT
- ✓ WARRANTY PERSONNEL

# Campaign Service

## BULLETIN

**BULLETIN NUMBER:**  
CB26-E-002

**ISSUE DATE:**  
MAY 2026

**GROUP:**  
FRAME, SUSPENSION,  
STEERING, WHEELS & TIRES

### IMPORTANT SAFETY RECALL

#### FVR FRONT STABILIZER BAR

#### SAFETY RECALL (CUSTOMER VEHICLES ONLY) -- 25V-719

(Transport Canada 2025-577)



#### AFFECTED VEHICLES

- 2022-2026MY Isuzu FVR Vehicles

#### INFORMATION

**IMPORTANT:** This bulletin only applies to FVR customer vehicles. Check IVIS for vehicle eligibility. Even though these campaigns share the same campaign numbers 25V-719, repairs differ by model and possibly vehicle inventory status.

- For FVR vehicles in dealer inventory please see CB26-E-001
- For FTR vehicles please see CB25-E-001

#### CONDITION

Isuzu Motors Limited has decided that a defect, which relates to motor vehicle safety, exists in certain 2022-2026MY FVR vehicles. In the affected vehicles, the front stabilizer bar brackets may break due to excessive stress on the stabilizer bar brackets and mounting studs, which may lead the front stabilizer bar to detach from the vehicle, creating a **potential road hazard and risk to motor vehicle safety, increasing a risk of a crash.**

#### CORRECTION

Isuzu dealers will remove the old stabilizer bar brackets and replace them with new stabilizer brackets. This service will be performed **free of charge.**

#### VEHICLES INVOLVED

Involved are 2022-2026MY Isuzu FVR vehicles.

**NOTE:** Dealers are to confirm vehicle eligibility prior to beginning repairs by using the Isuzu Vehicle Information System (IVIS).

For dealers with involved vehicles, a report of involved vehicles containing the complete vehicle identification number has been or will be provided. Dealers will not have a report available if they have no involved vehicles currently assigned.

## PARTS INFORMATION

Parts orders may be placed with American Isuzu Parts Distribution Network (AIPDN). Please refer to your “involved vehicles” listing before ordering parts. Normal (non-emergency) orders should be placed on a Stock Order. In an emergency situation, parts should be ordered on a VOR (Vehicle Off Road) Order.

<u>Part Number</u>	<u>Description</u>	<u>Quantity Required</u>
2-9008W-917-0	BRACKET; STAB BAR TO FRAME	2
8-98389-157-0	BOLT; LEAF SPRING	6
8-97360-118-0	WASHER; LK BRKT	6
8-98389-016-0	PLATE; LEAF SPRING	2
8-98335-737-0	U-BOLT; FRT SPR	2
8-98335-738-0	U-BOLT; FRT SPR	2
8-98389-175-0	NUT; CENTER BOLT, LEAF SPR, FRT	2
8-15081-325-0	NUT; PIN TO SUPPORTER	6
8-11516-202-0	NUT; U-BOLT	8
8-11609-638-0	WASHER; LK, PIN	8

## SERVICE PROCEDURE

**IMPORTANT: This bulletin only applies to FVR customer vehicles. Check IVIS for vehicle eligibility.**

1. Spray a small amount of penetrating oil onto the stabilizer bar bracket mounting studs. (See Figure 1.)

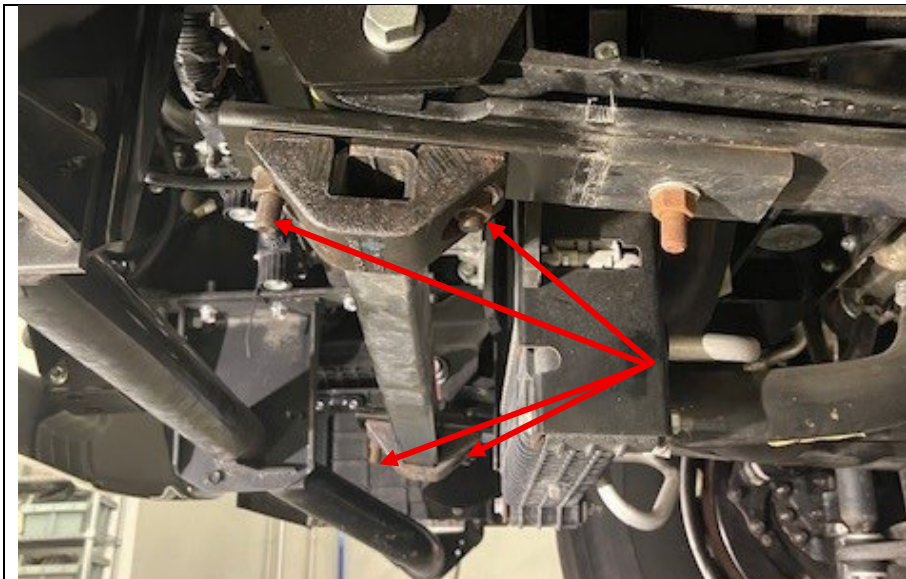


Figure 1

2. Remove the driver's side stabilizer bar bracket nuts and washers (1). (See Figure 2.)

**NOTE: An 18mm wrench can be used to hold the stud in place if the stud spins when removing the nuts.**

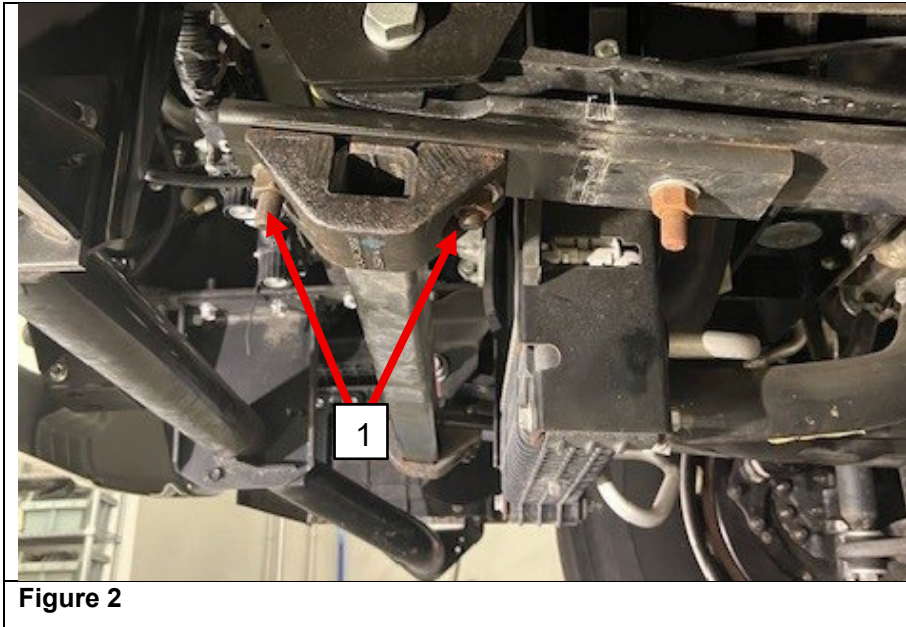


Figure 2

3. Remove the driver's side stabilizer bar bracket. Discard the bracket.

**NOTE: If necessary, lightly tap the stabilizer bar bracket with a hammer to loosen.**

4. Slide the stabilizer bar out towards the driver's side (slightly loosen the passenger side stabilizer bar bracket nuts as necessary). (See Figure 3.)

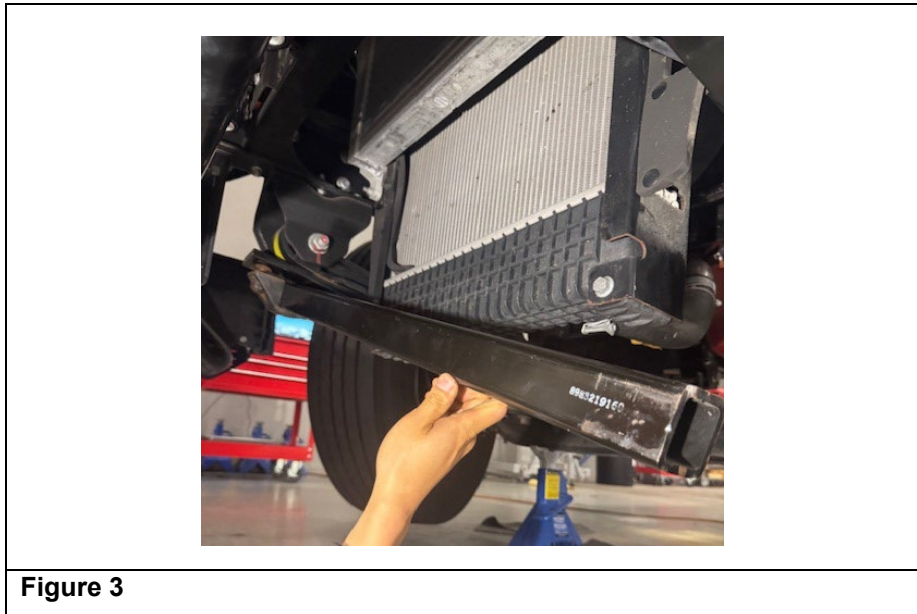


Figure 3

5. Remove the passenger side stabilizer bar bracket nuts, washer and bracket. Discard the bracket.

**NOTE: If necessary, lightly tap the stabilizer bar bracket with a hammer to loosen..**

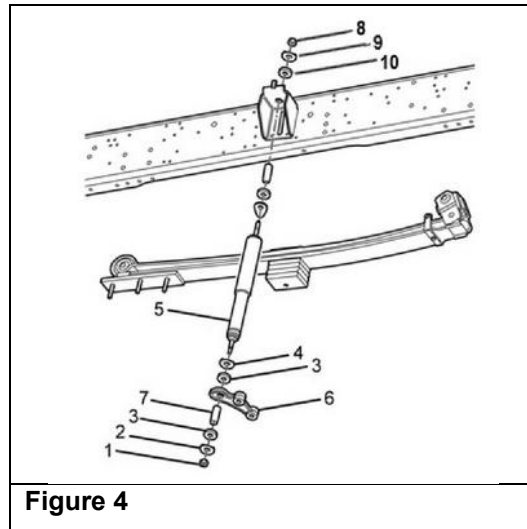
6. Raise the frame until the front tires clear the floor.
7. Support the frame using suitable safety stands.

**NOTE: Do not support the vehicle from the crossmember. Only support the vehicle from the frame. Refer to the Workshop Manual "Lifting Instruction".**

8. Support the front axle with a jack.

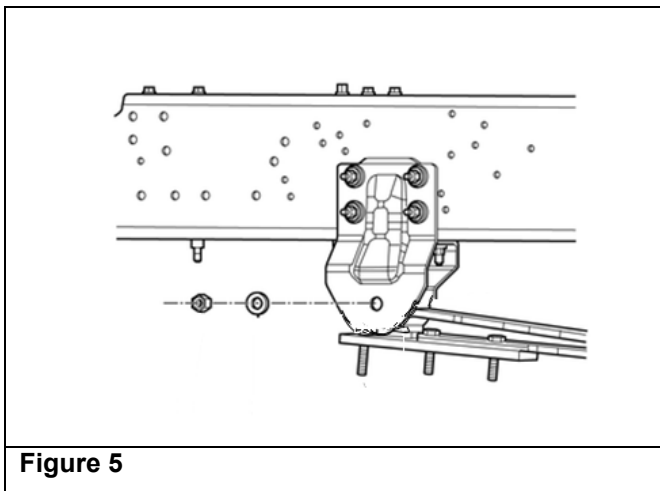
## **Driver Side Front Leaf Spring Removal**

9. Hold the upper half of the shock absorber with a hand and remove the nut (8), the washer (9), and the insulator (10). (See Figure 4.)

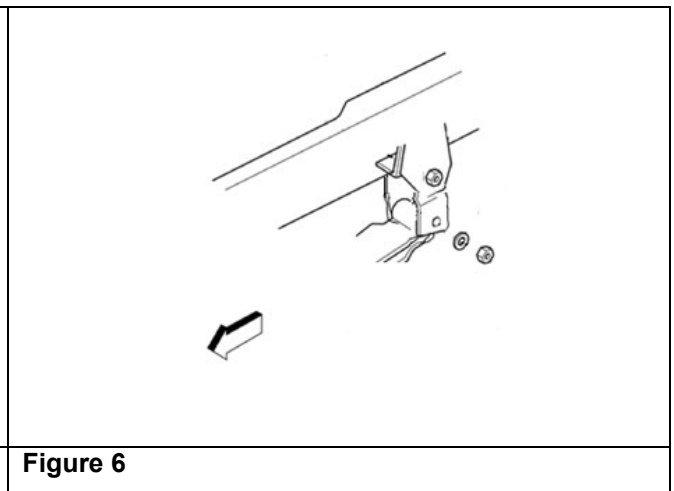


**Figure 4**

10. Remove the nuts from the front and rear leaf spring eyebolts. Loosen the upper rear shackle bolt so that the hanger can pivot. (See Figures 5 and 6.)

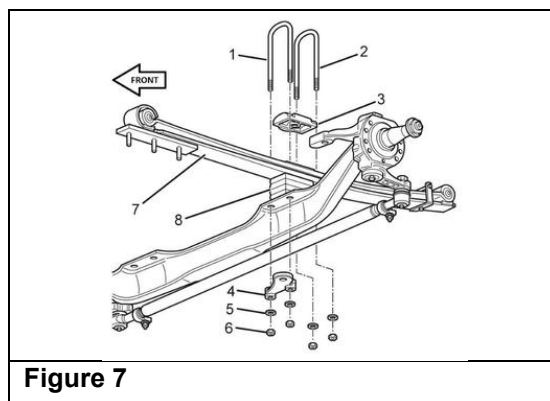


**Figure 5**



**Figure 6**

11. Remove the nuts (6), washers (5), U-bolts (1, 2) and the lower front shock mount (4) and shock. (See Figure 7.) Lower the axle and the tie rod far enough to relieve the tension from the spring (7). Discard the U-bolts.



**Figure 7**

12. Remove the front leaf spring eye bolt.
13. Remove the rear leaf spring eye bolt.
14. Remove the spring assembly (7) and the upper spring spacer (3) from the vehicle. (See Figure 7.)

### **Driver Side Front Leaf Spring Stud Replacement**

15. Place the leaf spring on a suitable work surface. (See Figure 8.)



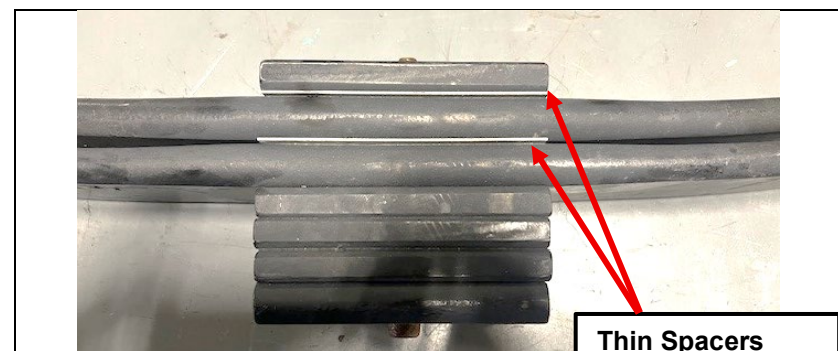
**Figure 8**

16. Remove the stabilizer bar mounting plate on the front of the leaf spring (if not already done). (See Figure 9.)



**Figure 9**

17. Take note of the order and position of the leaf spring spacers for reassembly. (See Figure 10.)



**Figure 10**

18. Clamp the leaves of the leaf spring together with a large C-clamp. (See Figure 11.)



19. Remove the center nut holding the spring leaves together. (See Figure 12.)



20. Slowly release tension on the C-clamp and remove it. Pull the center pin downward from the spring assembly enough to clear the upper spring leaf. (See Figure 13.)

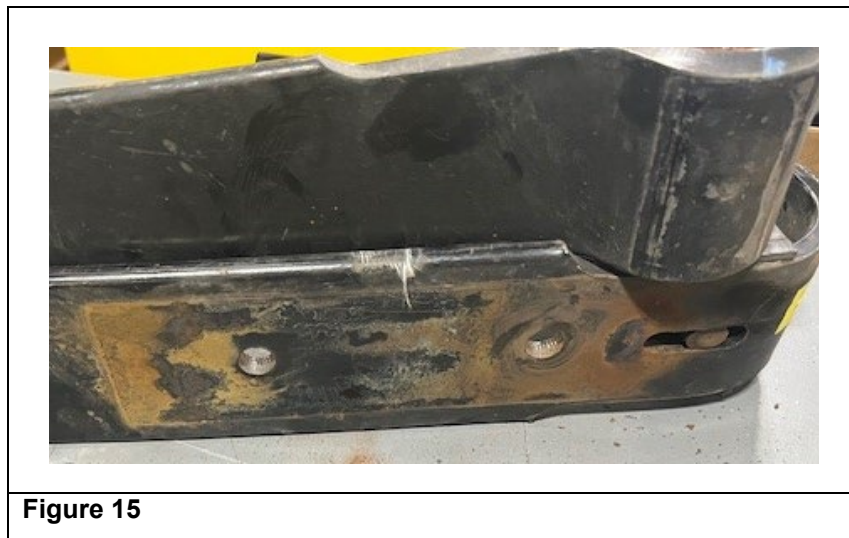
**NOTE: The center pin can be lightly tapped down with plastic faced hammer to free it up if it does not easily move.**



21. Move the upper leaf of the spring assembly upwards enough to clear the two studs and support it with a piece of wood as shown in Figure 14.



22. Use a hammer to drive out both studs. If either stud is broken flush, use a flat-faced punch to drive the broken piece out. (See Figure 15.)



23. Insert a new stud in each empty hole. Stack the old washers or use a spacer and install an old nut on the stud and hand tighten. (See Figures 16 and 17). Tighten the nut to draw the stud into the hole until it is completely inserted, with the head seated flush. Remove the nuts and washers/spacer.

**NOTE: A hammer may be carefully used as necessary to completely seat the studs.**



24. Remove the block of wood and guide the upper spring leaf back into place. Ensure that the front and rear eyelet plastic liners are in place properly. (See Figures 18 and 19.)

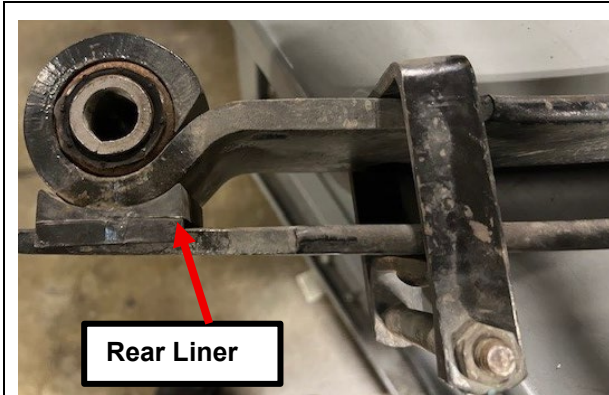


Figure 18

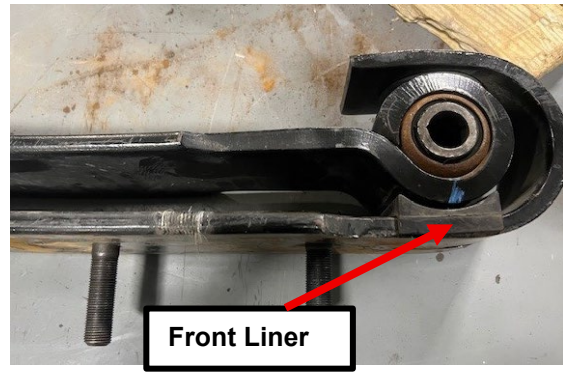


Figure 19

25. Insert the center pin/bolt back through the leaf spring assembly. Ensure that all the thin spacers are properly in place. (See Figure 20.)



Figure 20

26. Install the C-clamp onto the leaf spring leaves and tighten the clamp until the center pin can be pushed completely through. Install the upper leaf spring seat and a new nut (See Figure 21.) **Tighten the nut to 160 N•m (118 lb ft).**



**Figure 21**

27. Install a new stud into a new stabilizer bar mounting plate into the hole on the plate 23mm from the leading edge. (See Figure 22.) Hold the plate in a vice while installing the new stud and use the same process described in Step 23 to install the stud. (See Figure 23.)

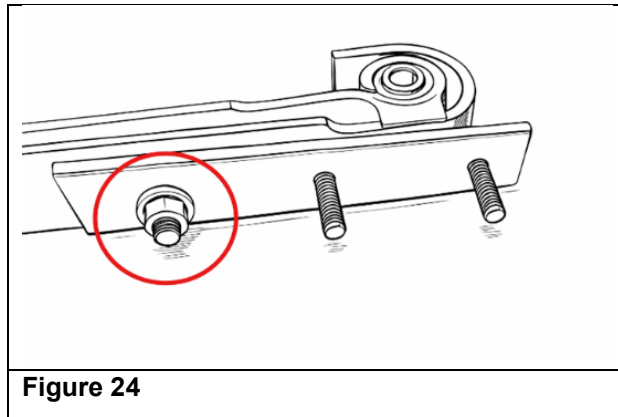


**Figure 22**



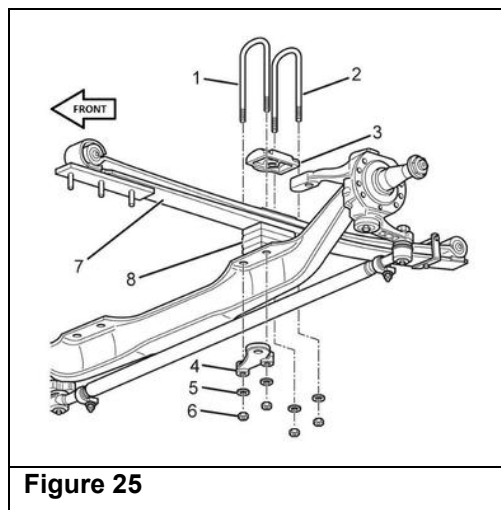
**Figure 23**

28. Install the stabilizer bar mounting plate onto the front of the leaf spring using a *new* washer and a *new* nut on the rearmost stud. (See Figure 24.) **Tighten the nut to 230 N•m (170 lb ft).**



### **Install the Front Leaf Spring**

29. Install the leaf spring (7) so that the stabilizer shaft link mounting bracket is toward the front of the vehicle. (See Figure 25.)



30. Install the rear leaf spring eye bolt, washer and nut, but do not tighten.

31. Raise the axle and the tie rod to support the spring (7). Ensure that the lower spring spacer (8) is in the correct position. (See Figure 25.)

32. Align the spring center bolt to the hole in the axle.

33. Install the front leaf spring eye bolt (1), washer (2) and nut (3), but do not tighten. (See Figure 26.)

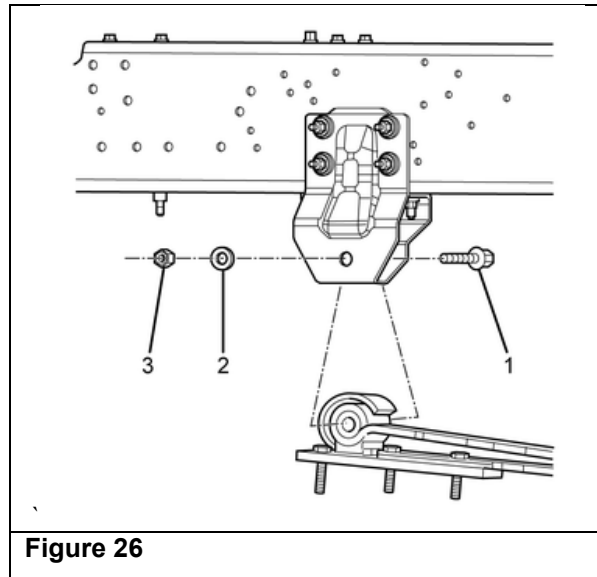


Figure 26

34. Install two *new* U-bolts 8-98335-737-1 (front) and 8-98335-738-1 (rear) with the upper spring spacer (3). (See Figure 27.)

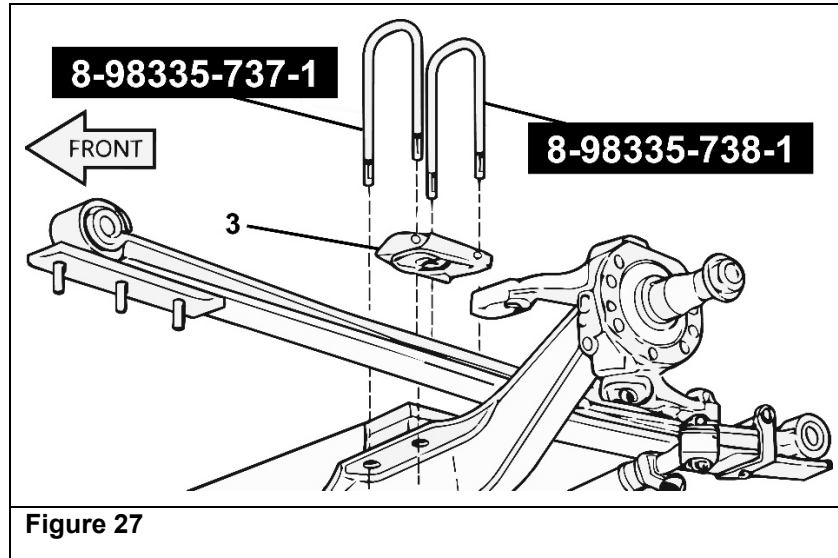


Figure 27

**NOTE: New U-bolts, washers, and nuts must be utilized when installing the leaf spring.**

35. Install the lower front shock mount and shock. Ensure that the upper shock shaft and hardware are properly located in the upper shock mount. (See Figure 28.)

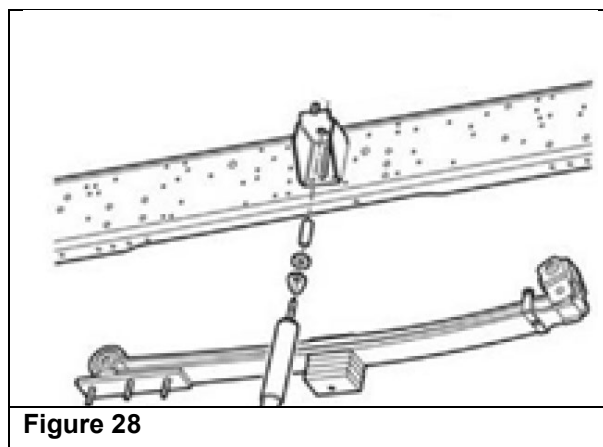
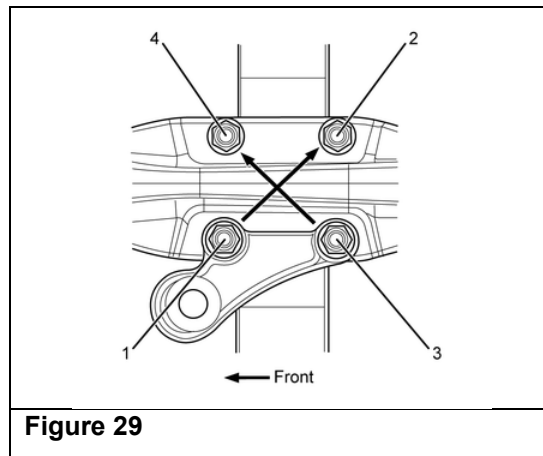


Figure 28

36. Install the *new* U-bolt washers and the *new* U-bolt nuts. (See Figure 29.)



**Tighten Nuts:**

- Tighten the U-bolt nuts (1–4) in a first pass in the sequence shown in Figure 29 to 100 N•m (74 lb ft).
- Tighten the U-bolt nuts (1–4) in a second pass in the sequence shown in Figure 29 to 190 N•m (140 lb ft).
- Tighten the U-bolt nuts (1–4) for a final pass in the sequence shown in Figure 29 to 220 N•m (162 lb ft).

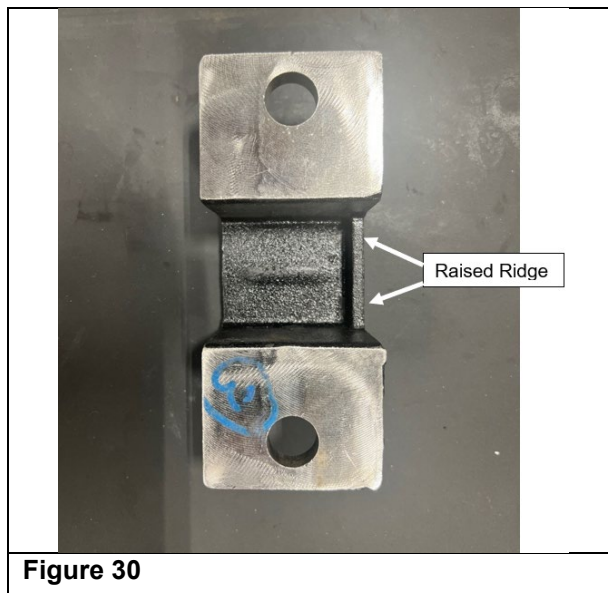
37. Tighten both leaf spring eye bolt nuts to 330 N•m (243 lb ft).

38. Install the following components the insulator (10), the washer (9), and the nut (8) onto the upper shock absorber. (See Figure 4.)

**Tighten the upper shock absorber nut to 80 N•m (59 lb ft).**

39. Repeat Steps 9 through 38 for the passenger side front leaf spring assembly.

40. Install a new front stabilizer bracket onto the passenger side with new washers and nuts. Ensure that the raised ridge on the bracket is towards the outside of the vehicle. (See Figure 30.) Hand tighten each nut about 5 turns.



41. Install the old front stabilizer bar by sliding it into the left bracket until it is against the raised ridge on the bracket. (See Figures 31 and 32.)



Figure 31

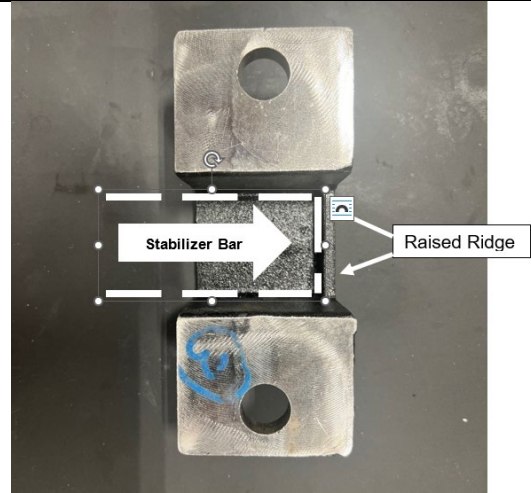


Figure 32

42. Support the stabilizer bar and install the driver side stabilizer bar bracket with new washers and nuts. (See Figure 33.) Ensure that the end of the stabilizer bar is within the raised ridge as shown in Figure 32.



Figure 33

43. Tighten all four (4) nuts of the stabilizer bar brackets and torque to 230 N•m (170 lb ft).

44. Lower the vehicle.

45. Proceed to **Applying the Campaign Label**.

## APPLYING THE CAMPAIGN LABEL

### APPLYING THE CAMPAIGN LABEL

46. Using a ball-point pen, fill in a campaign label (Part No. 2-90028-700-0) with Campaign Number 25V-719 (US), or 2025-577 (Canada), Isuzu dealer code, and repair date.
47. Affix the campaign label onto the driver's side B-pillar.

<b>ISUZU</b> CAMPAIGN NUMBER _____ DEALER CODE: _____ REPAIR DATE: _____ <small>P/N 2-90028-700-0</small>
--

### CAMPAIGN CLAIM INFORMATION

Refer to the Isuzu ICS Claims Processing Manual for details on Campaign Claim Submission. Submit only **one** claim as indicated below.

**NOTE: Failure to submit campaign claims in a timely manner may result in delayed payment. Accepted/Paid claims will change campaign status to “Closed” in IVIS. Submit claims as quickly as possible in order to close the campaign and ensure payment.**

Labor Operation Code	Description	Labor Time
V2506CV	FVR Front Stabilizer Safety Recall (Customer Vehicles Only)	3.6

*\*Includes 0.1 hours for administrative allowance.*

### DEALER RESPONSIBILITY

All vehicles in dealers' possession and subject to this safety recall must be held and repaired per the service procedure of this campaign bulletin before customers take possession of these vehicles.

Customers who have recently purchased vehicles sold from your vehicle inventory, and for which there is no customer information indicated on the dealer listing, are to be contacted by the dealer. Arrangements are to be made to make the required correction according to the instructions contained in this bulletin. A copy of the customer letter is provided in this bulletin for your use in contacting customers. Program follow-up cards should not be used for this purpose, since the customer may not have yet received the notification letter.

In summary, whenever a vehicle subject to this safety recall enters your vehicle inventory, or is in your dealership, you must take the steps necessary to be sure the campaign correction has been made before selling or releasing the vehicle.

### OWNER NOTIFICATION

Samples of recall letters that will be sent to owners of affected vehicles already retailed in the United States and Canada are attached below.

**IMPORTANT SAFETY RECALL**  
**NHTSA Recall 25V-719**

This notice applies to your vehicle, <VIN>

MAY 2026

Dear Customer,

This notice is sent to you in accordance with the National Traffic and Motor Vehicle Safety Act.

Previously, we sent you a letter about this safety recall. This letter is to inform you that parts are now available.

**WHAT IS THE CONDITION?**

Isuzu Motors Limited has decided that a defect, which relates to motor vehicle safety, exists in certain 2022-2026MY FVR vehicles. In the affected vehicles, the front stabilizer bar brackets may break due to excessive stress on the stabilizer bar brackets and mounting studs, which may lead the front stabilizer bar to detach from the vehicle, **creating a potential road hazard and risk to motor vehicle safety, increasing a risk of a crash.**

**WHAT WE WILL DO**

Your Isuzu dealer will remove the old stabilizer bar brackets and replace them with new stabilizer brackets. This service will be performed **free of charge.**

**WHAT YOU SHOULD DO**

We recommend that you contact your Isuzu dealer to schedule an appointment. Although not necessary, please present this Owner Notification Letter at the time of your appointment or refer to Campaign Service Bulletin CB26-E-002. We estimate that the remedy may take up to 3hrs 36mins to perform.

To locate the nearest Isuzu dealer, you can visit our website at [www.isuzuev.com](http://www.isuzuev.com) or contact our Customer Relations Department at the number listed below.

**Isuzu Commercial Truck of America**  
**Customer Relations**  
**1-866-441-9638**

If you have any questions or concerns, please call Isuzu customer relations at 1-866-441-9638. If you are still not satisfied, you may write to the Administrator of the National Highway Traffic Safety Administration, 1200 New Jersey Avenue, SE, Washington DC 20590, or call the agency's toll-free Vehicle Safety Hotline at 1-888-327-4236 (TTY: 1-888-275-9171) or go to <http://www.nhtsa.gov>.

We regret any inconvenience this action may cause you.

Sincerely,

Isuzu Commercial Truck of America, Inc.

*Important: If you have sold or traded your Isuzu vehicle, please enter the owner's name and address, if known, on the attached "Change of Information" postcard, tear off at both perforations, and drop it in the mail. Postage has already been paid. We will contact the new owner.*

*Federal law requires that any vehicle lessor receiving this recall notice must forward a copy of this notice to the lessee within ten days. Lessor means a person or entity that is the owner, as reflected on the vehicle title, of any five or more leased vehicles.*

## IMPORTANT SAFETY RECALL

This notice applies to your vehicle <VIN>  
<MY> model year ISUZU FVR

MAY 2026

Dear Customer,

This notice is sent to you in accordance with the requirements of the *Motor Vehicle Safety Act*. This is to inform you that your vehicle may contain a defect that could affect the safety of a person. Safety Recall Transport Canada 2025-577.

Previously, we sent you a letter about this safety recall. This letter is to inform you that parts are now available.

### WHAT IS THE CONDITION?

Isuzu Motors Limited has decided that a defect, which relates to motor vehicle safety, exists in certain 2022-2026MY FVR vehicles. In the affected vehicles, the front stabilizer bar brackets may break due to excessive stress on the stabilizer bar brackets and mounting studs, which may lead the front stabilizer bar to detach from the vehicle, **creating a potential road hazard and risk to motor vehicle safety, increasing a risk of a crash.**

### WHAT WE WILL DO

Your Isuzu dealer will remove the old stabilizer bar brackets and replace them with new stabilizer brackets. This service will be performed **free of charge**.

### WHAT YOU SHOULD DO

We recommend that you contact your Isuzu dealer to schedule an appointment. Although not necessary, please present this Owner Notification Letter at the time of your appointment or refer to Campaign Service Bulletin CB26-E-002. We estimate that the remedy may take up to 3hrs 36mins to perform.

To locate the nearest Isuzu dealer you can visit our website at [www.isuzutruck.ca](http://www.isuzutruck.ca) or contact our Customer Relations Department at the number listed below.

**Isuzu Commercial Truck of Canada  
Customer Relations  
1-866-441-9638**

We regret any inconvenience this action may cause you.

Sincerely,

Isuzu Commercial Truck of Canada, Inc.

*Important: If you have sold or traded your Isuzu vehicle, please enter the owner's name and address, if known, on the attached "Change of Information" postcard, tear off at both perforations, and drop it in the mail. Postage has already been paid. We will contact the new owner.*

*Federal law requires that any vehicle lessor receiving this recall notice must forward a copy of this notice to the lessee within ten days.*