

Recall Bulletin 251021REV



<p>NHTSA 25V718 TC # 2025-660</p>	<p>The purpose of this Recall Service Bulletin is to inform REV Recreation Group (RRG) dealers of the need to inspect and perform needed repairs to 2024-2026 Fleetwood Fortis and Holiday Rambler Invicta motorhomes. A list of affected motorhome serial numbers appears at the end of this Recall bulletin.</p>
<p>YEAR(S) AFFECTED: 2024-2026</p>	<p><u>CONDITION:</u></p> <p>Lippert filed a Safety Recall involving non-locking paddle latches they supplied RRG that were used on certain 2024-2026 model year Fleetwood Fortis and Holiday Rambler Invicta motor homes. These latches were installed on liquid propane (LP) compartment doors and may lock unintentionally.</p> <p><u>DEALER CORRECTIVE ACTION:</u></p>
<p>PRODUCT(S) AFFECTED:</p> <p><u>FLEETWOOD FORTIS</u></p> <p><u>HOLIDAY RAMBLER INVICTA</u></p>	<p>This repair bulletin provided by REV RV supplies technical instructions so an authorized REV RV Dealer or Service Center technicians can replace the LP compartment door paddle latch with a new updated latch.</p> <p>Note: This REV RV Recall Repair is to be performed by a REV RV dealership technician. Do not contact Lippert.</p>
<p>DATE RANGE OF MANUFACTURE: APRIL 12, 2023 - NOVEMBER 19, 2025</p>	<p>ATTENTION SERVICE, WARRANTY AND PARTS MANAGERS: All prior Authorization Approvals must go through REV RV Dealer Technical Support (800) 816-9825</p>
<p>MODEL(S) AFFECTED: ALL</p>	<p><u>WARRANTY LABOR ALLOWANCE:</u></p> <p>Recall 251021REV LP Compartment Door Paddle Latch (Prior Authorization is required).</p> <p>Use Flat Rate Codes: 6325 12 Inspected/Defective/Repaired Time Allowed: .20 hr.</p> <p><u>RECALL PART KIT NEEDED: 10914292</u></p>
<p>SUBJECT: LP COMPARTMENT DOOR NON - LOCKING PADDLE LATCH</p>	<p>LP Compartment Paddle Latch can be ordered from revrvparts.com OR CALL REV Parts (800) 509-3417</p> <p>**READ THE FOLLOWING BULLETIN CAREFULLY**</p>
<p>ISSUED: DECEMBER 2025</p>	
<p>2025 REV Recreation Group, Inc.</p>	

This bulletin is supplied for technical information only and is not an authorization for repair.

Federal law (section 154 of the national traffic and motor vehicle safety act of 1966) requires that: If you have received a notice of recall or failure to comply from REV Recreation Group or any component Manufacturer, you must repair or otherwise correct the defects on vehicles remaining in your inventory, according to the notification, before selling or leasing the vehicles. Any vehicle lessor receiving this recall notice must forward a copy of the notice to the lessee within ten days.
"It is impossible to know, evaluate and advise the service trade of all conceivable ways in which service might be done or of the possible hazardous consequences of each way. Accordingly, anyone who uses a service procedure or tool must first assure that neither personal safety nor vehicle safety will be jeopardized by the selected service methods."

CAUTION

USE INDUSTRY SAFETY PRECAUTIONS AND USE APPROPRIATE PERSONAL PROTECTIVE EQUIPMENT TO AVOID INJURY WHILE PERFORMING THIS RECALL

Note: This REV RV recall repair is to be performed by an REV RV dealership technician.

This bulletin is to provide instructions to replace the Liquid Propane (LP) compartment door latch only. No other compartment door latches are involved in this procedure.

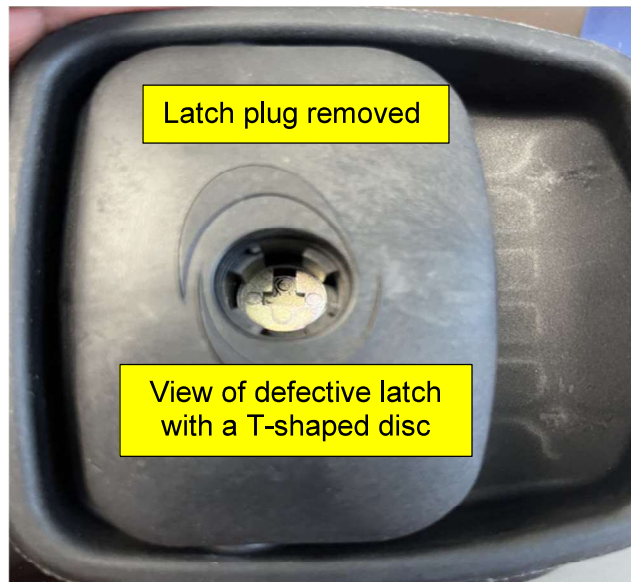
Note: All affected units listed on this Recall bulletin need to have the latch replaced.

- A. Locate the LP compartment on the exterior of the motor home. On the exterior face of the LP door, find the door latch containing a round plastic plug.

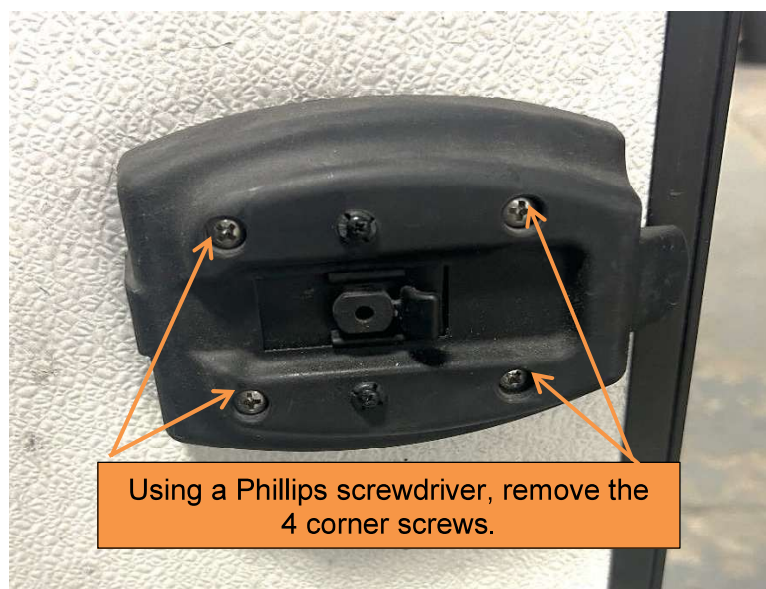


Removal of the latch

1. If the latch will not open, remove the plastic plug and use a small flat blade screwdriver and insert it into the T-shaped metal disc. Rotate the disc and open the latch.



2. With the LP door open, locate the screws on the backer plate interior latch section.



3. Remove the 4 corner screws, this should allow the front and the back to be removed. Do not remove the smaller middle screws.

4. Locate the new outer latch assembly from the REV Parts Kit.
5. Make sure that the new outer gasket is in place before reassembly.
6. Assemble the front (including gasket) and backer plates making sure to align properly with the opening in the door. Note: Once the installation is completed the outer face should cover any graphics and align with the original installation.
7. Use a Phillips screwdriver to tighten the 4 corner screws on the interior of the door backer plate.
8. DO NOT OVER-TIGHTEN to prevent crushing the door.
9. Test the door operation.
10. Discard the defective latch.

WARRANTY LABOR ALLOWANCE:

Recall 251021REV LP Compartment Paddle Latch (Prior Authorization Required)

Flat Rate Code: 6325 12 Inspected/Defective/Repaired Time Allowed: .20 hr.

TOOLS AND PPE

Phillips screwdriver

Small flat blade screwdriver

PART KIT NEEDED – # 10914292 ordered from revrvparts.com OR Call REV Parts (800) 509-3417

ALL APPROVALS, and CLAIM PAYMENTS must go through REV RV Technical Support at (800) 816-9825.

**THE LIST OF AFFECTED UNITS THAT NEED THE OUTER LATCH REPLACED
START ON PAGE 5**