

# Recall Bulletin 251003REV



<b>RECALL BULLETIN: 251003REV</b>	<p>The purpose of this Recall Service Bulletin is to inform REV Recreation Group dealers of the need to inspect and perform needed repairs to 2024-2026 Fleetwood Fortis and Holiday Rambler Invicta, Y and T model motorhomes. A list of affected motorhome serial numbers appears at the end of this Recall bulletin.</p>
<b>YEAR(S) AFFECTED: 2024-2026</b>	<p><b><u>CONDITION:</u></b></p>
<p><b>PRODUCT(S) AFFECTED:</b></p> <p><b><u>FLEETWOOD FORTIS</u></b></p> <p><b><u>HOLIDAY RAMBLER INVICTA</u></b></p>	<p>Fleetwood Fortis and Holiday Rambler Invicta, Y and T model motorhomes with the <b>Theater Seat option</b> are affected by this recall campaign. In the process of mounting the theater seat option, a fastener was installed through a bracket which may have damaged the Liquid Propane, LP hoses causing a risk of fire, injury or death.</p>
<p><b>MONTHS OF MANUFACTURE: JUNE 20, 2023 - SEPTEMBER 15, 2025</b></p>	<p><b><u>DEALER CORRECTIVE ACTION:</u></b></p>
<p><b>MODEL(S) AFFECTED: Y &amp; T WITH THEATER SEAT OPTION</b></p>	<p>This repair bulletin provided by REV RV, supplies technical instructions so an authorized REV RV Dealer or Service Center technicians can perform an inspection and repair or if damaged replacement of the LP hoses under the theater seating area. Damaged hoses need to be replaced.</p>
	<p><b>Note: This REV RV repair is to be performed by a REV RV dealership technician.</b></p>
	<p><b>ATTENTION SERVICE, WARRANTY AND PARTS MANAGERS:</b> <b>All prior Authorization Approvals must go through REV RV Dealer Technical Support (800) 816-9825</b></p>
<p><b>SUBJECT: Theater Seat Fasteners May Damage LP Hose</b></p>	<p><b><u>WARRANTY LABOR ALLOWANCE:</u></b></p>
<p><b>ISSUED: NOVEMBER 2025</b></p>	<p>Recall 251003REV Theater Seat Fastener May Damage an LP Hose (Prior Authorization required).</p>
	<p>Use Flat Rate Codes: 6324 12 Inspected/Defective/Repaired Time Allowed: 1.5 hrs.</p>
	<p><b><u>RECALL PARTS KIT: # 10914103</u></b></p>
	<p>Theater Seat Fastener Parts Kit can be ordered from revrvparts.com OR CALL REV Parts (800) 509-3417</p>
<p>2025 REV Recreation Group, Inc.</p>	<p><b>**READ THE FOLLOWING BULLETIN CAREFULLY**</b></p>

Federal law (section 154 of the national traffic and motor vehicle safety act of 1966) requires that: If you have received a notice of recall or failure to comply from REV Recreation Group or any component Manufacturer, you must repair or otherwise correct the defects on vehicles remaining in your inventory, according to the notification, before selling or leasing the vehicles. Any vehicle lessor receiving this recall notice must forward a copy of the notice to the lessee within ten days.

"It is impossible to know, evaluate and advise the service trade of all conceivable ways in which service might be done or of the possible hazardous consequences of each way. Accordingly, anyone who uses a service procedure or tool must first assure that neither personal safety nor vehicle safety will be jeopardized by the selected service methods."

This bulletin is supplied for technical information only and is not an authorization for rep

## CAUTION

• USE INDUSTRY SAFETY PRECAUTIONS AND USE APPROPRIATE PERSONAL PROTECTIVE EQUIPMENT TO AVOID INJURY WHILE PERFORMING THIS RECALL

This bulletin provides detailed instructions to access, inspect and remedy potentially damaged Liquid Propane (LP) hoses located under the rear theater seat. If this unit does not have the theater seat style furniture, this repair does not apply.

1. Turn off the Liquid Propane (LP) valve at the LP tank. Do not proceed unless this step is completed.

**Warning:** Prior to proceeding make sure to use caution in this area as it contains LP hoses, electrical wires, and potentially sharp surfaces. Use proper PPE.

2. Extend the slide out as the extra room is needed to maneuver.
3. Locate the rear theater seat. This procedure does not apply to a standard sofa seat.
4. On each side of the rear seat back, there are clips that need to be activated to allow the seat back to be removed. Lift the seat back off and set it aside. See below.



Clip on each side

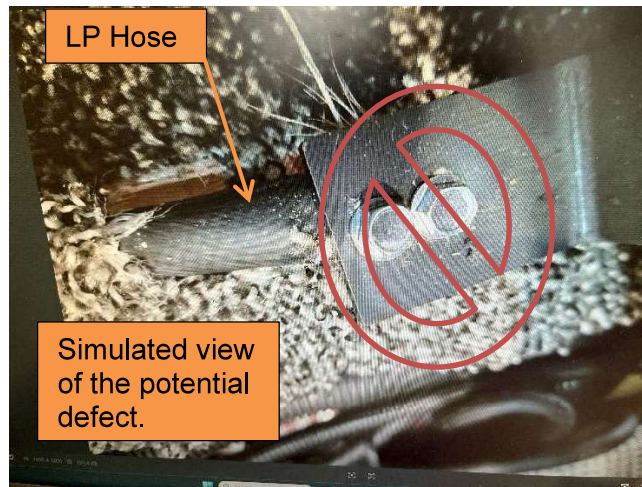


Lift off

Page 7 contains the Main Diagram that will help provide guidance throughout this procedure.

Note: **The following inspection steps are critical.**

**The key point is to mark where the screws for each bracket are located. This will help determine if any damage occurred.**



5. Flip up the footrest by pulling the black handle next to the seat base to release the footrest mechanism.

**Note: Keep all screws for reassembly.**

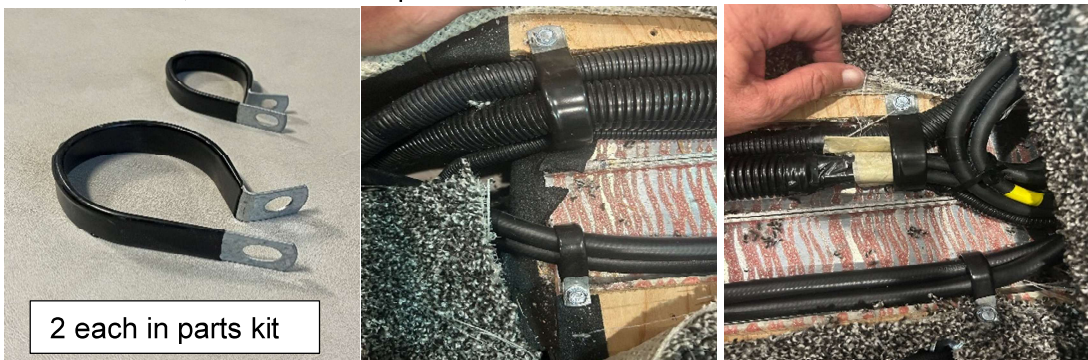
6. Apply masking tape onto the carpeting around each mounting bracket and pay specific attention to the location of the screws. The rear brackets will be better accessed from the opening created by removing the seat back.
7. Also make sure to add tape next to the center console bracket that should be in view to the right while laying on the floor. **Again, pay close attention to the screw location.**
8. You will need to cover the living area floor with cardboard or other protective material prior to removing the theater seat. The metal edges of the seat support frame can damage the flooring.
9. Get help to remove the rear theater seat from the slide out. **DO NOT REMOVE IT FROM THE MOTOR HOME.** Set it on the protective material on the motor home floor.
10. **You will not need to remove any other pieces of furniture.**
11. You **may** find there is a rectangle carpeted plywood cover screwed to the floor. Before removing it, mark its location by outlining it with tape. Also locate and mark the screws securing it to the slide out floor. Remove the carpeted cover. Set it aside for later.
12. Next, locate, mark with tape and remove the bracket for the center console (to the right of this area), this bracket may also need to be relocated toward the sidewall if the screws went into the open area. It also may have been screwed through the carpeted cover (and possibly into the open area).



13. Once the carpeted area is exposed with the seat removed, you will locate the large L-shaped cut out below the carpet with your hands, pay specific attention to the tape marks you installed in steps 6 and 7. **Do not cut the carpeting yet.**
14. **Any tape marks** that are placed over the L-shaped opening will need to be thoroughly evaluated to determine if damage occurred that may be hidden under the carpeting.
15. **You will cut the carpet to the right of the L-shaped opening by 1 inch.** The carpet overlap will be addressed in a later step. See the diagram below. The red lines represent the channel and open area, the orange dotted line represents your cut line. The cut line should be 1 inch from the floor opening in order to staple the carpet back down after inspection/repair. Caution: Be careful not to cut anything but the carpeting.



16. Once the carpet is folded back to expose the open areas, you will need to match the bracket/screw tape marks with the LP hoses and wires located beneath the carpeting. The purpose of this procedure is to ensure the LP hoses and wires are not damaged by any screws. **Inspect for damage.** If any damage has occurred, take photos and contact REV RV Dealer Support (800) 816-9825 immediately for further instructions.
17. After thorough inspection, if the hoses and wires are not damaged, separate them so they are routed through channels in the slide out floor. You may have to relocate wire ties to help with positioning.
18. Once the layout is in place, use the insulated P-clamps from the parts kit to secure the hoses and wires. Mount the clamps with **the 1-inch hex screws** into the plywood as shown below. Do not screw through the bottom of the open channel. See the **green star** indicators on the **main diagram** for location of the P-Clamps. The larger clamps are for the wire looms, the smaller clamps are for the LP hoses.

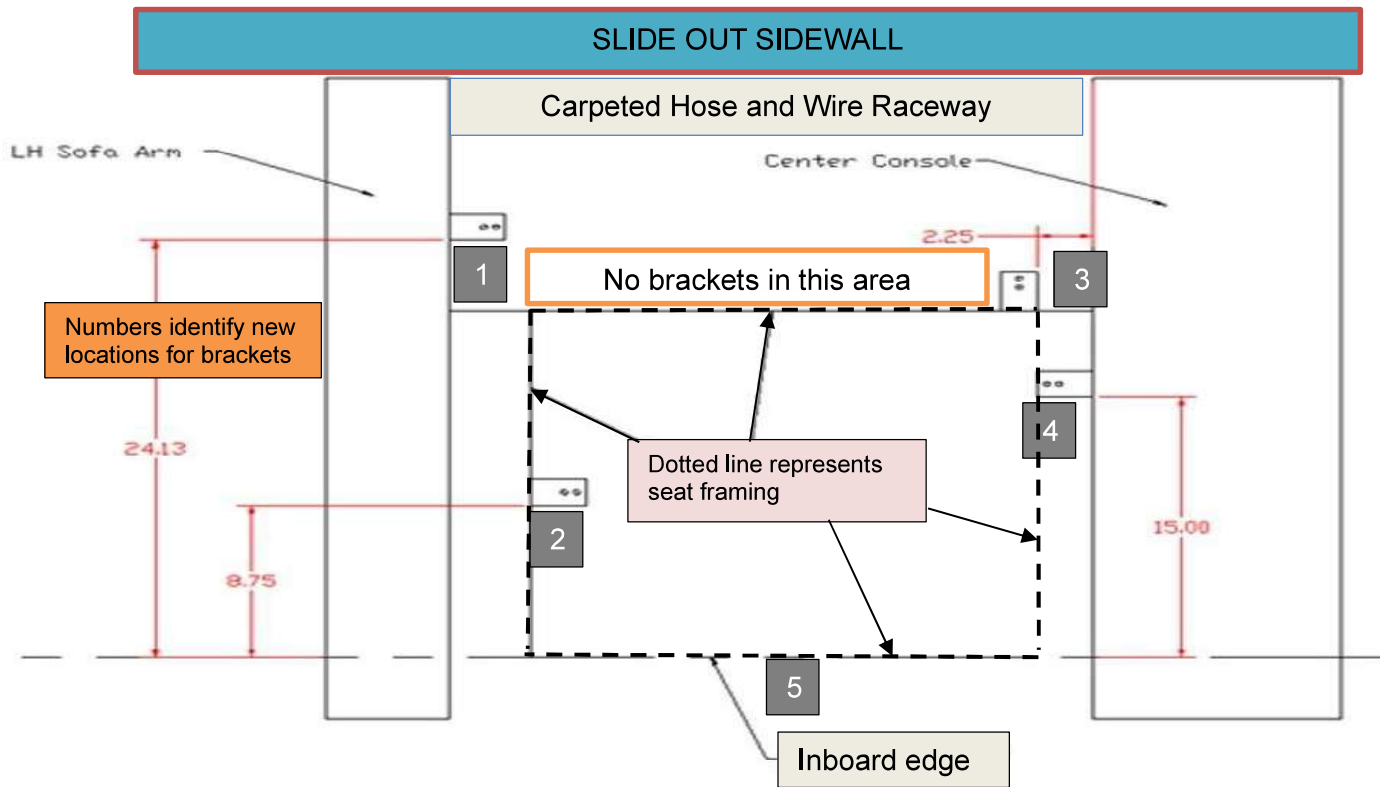


19. **Warning:** Once the inspection is completed, if no damage is found, reattach the carpeting with staples making sure to stay out of the open areas and away from wires or hoses.
20. **Note:** To prevent damage, you will relocate the seat frame to floor brackets as shown on the main diagram (see page 7), as some brackets will not go in the original mounting location. Follow measurements carefully. No screws should go into the open areas.

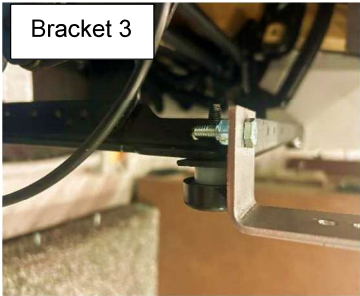
**Note:** The following instructions and measurements do not include the toe kick board. Also, some measurements are approximate as the seat mounting bracket must align with pre-drilled holes in the seat frame angle (for brackets 1 and 2).

Best practice is to map out each location from the diagram below and apply tape to the carpeting where the brackets are to go. Secure the brackets to the seat framing with the original threaded self-tapping bolts.

21. **Bracket #1** attaches the left arm rest to the floor, (confirm the location of this bracket on the diagram below). Use the original screws if possible. **Bracket #2** attaches the theater seat frame to the floor, (confirm the location of this bracket on the diagram below.) Use the original screws if possible. **Bracket #3** attaches the corner of the theater seat frame to the floor. Use a ratchet and wrench to attach the bracket to the seat frame angle with ¼ inch bolt/washer/nut from the parts kit. See picture below. **Bracket #4** attaches the center console to the floor (use 1¼ inch screws provided). Make sure the location of the bracket and screws are not in the open area. **Bracket #5** will be discussed later.

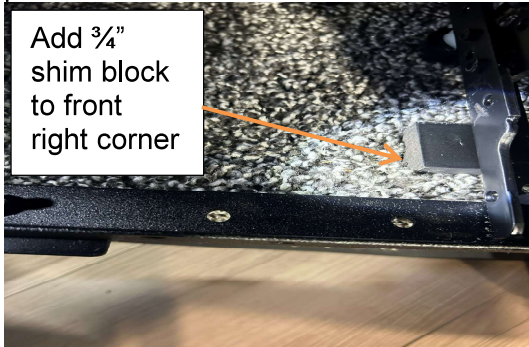


Bracket # 3 Mounting Picture



**Position the seat frame back into place on the slide out floor as shown on the main diagram on Page 7.** It will take 2 people to lift the seat into place to avoid hitting the galley top.

22. Position the mounting brackets to best align with the measurements and tape marks on the carpeting. Attach with screws but do not tighten until after bracket #5 is installed.
23. Use a  $\frac{3}{4}$  inch wooden shim or block and temporarily install it under the leading corner of the seat to help raise up the inboard edge of the seat. Bracket #5 will hold the front into place once it's installed.



### Bracket #5 Installation

24. Loosen the toe kick by removing the screws starting at the rear working forward. Once it is loose, you will see the tubing in the slide out floor.



25. Mark with tape on the carpet the location of the hole in the slide out floor tube aluminum (see photo above).
26. Reattached the toe kick. You will want to **avoid the hole** when attaching bracket #5 (11" steel bracket) from the parts kit. You will also need to know the thickness of the floor and the tubing to ensure when you are mounting bracket #5 through the carpeted toe kick, the screws must land into the middle of the aluminum tubing and not just the plywood. The mounting of the #5 bracket location can float side to side to avoid the hole in the aluminum. With the bracket #5 in hand test fit it to the seat framing and to the toe kick.
27. Align the 11" mounting bracket with the toe kick and the angle on the seat frame. With the  $\frac{3}{4}$ " block on the right as a guide, raise the inboard edge of the seat to improve the levelness or positioning.

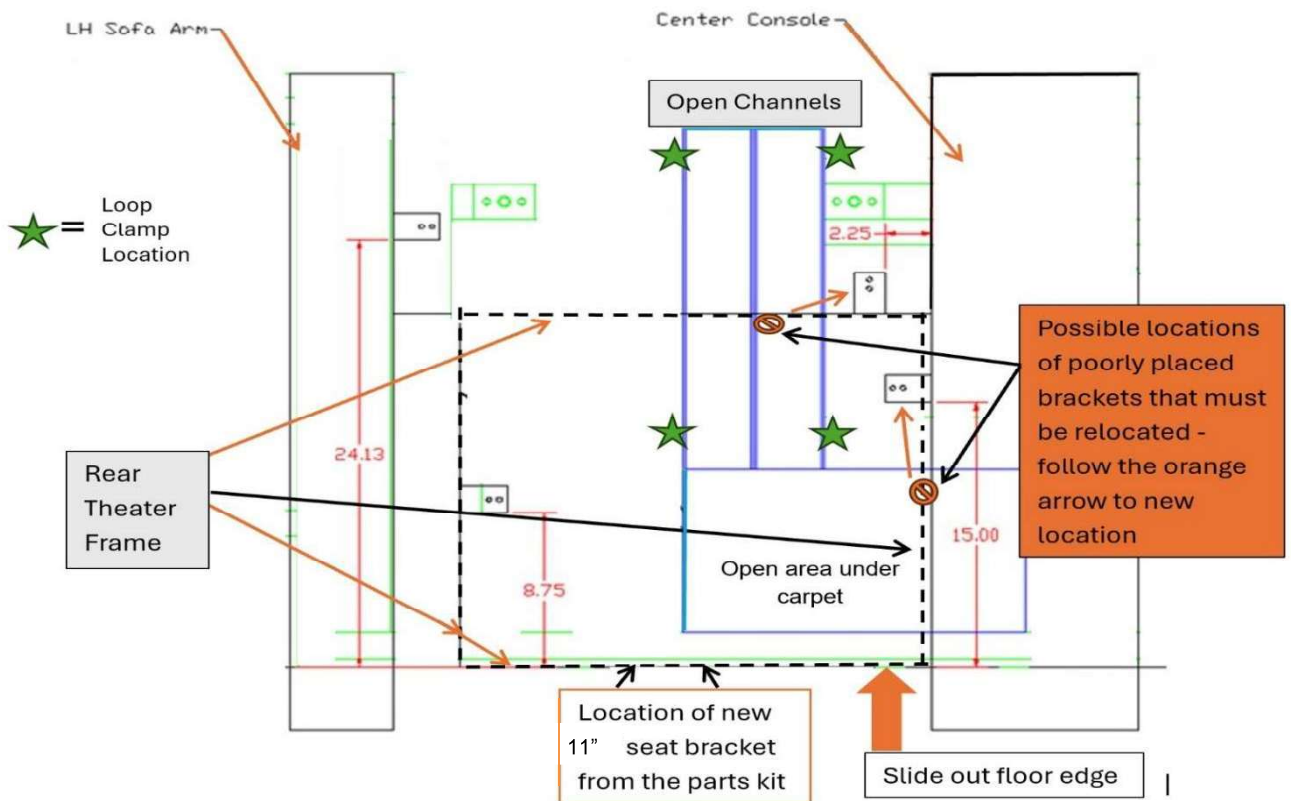
28. Mark the locations on the mounting bracket with the seat shimmed up.
  - 1) Mark hole locations to align with the bracket with the floor aluminum tubing (making sure to straddle the tube hole in step 25).
  - 2) Mark the holes for mounting the bracket to the seat frame angle.
- Note:** The holes that came in the mounting bracket may not be used.
29. Drill out the holes marked on the bracket with 1/4" drill bit.
30. Use the 1 1/4" self-tapping hex head screws provided to fasten the mounting bracket to the floor (through the plywood toe kick and into the aluminum).
31. Next attach the mounting bracket to the seat framing with 2 each -1/4" bolt/washer/nut. Use a socket and wrench to tighten. Remove the wood shim.
32. Next tighten all of the mounting bracket screws.



33. Remove all of the tape marks.
34. Install the carpeted cover by positioning it in the right front corner over the carpeting.
 

**Caution:** Only apply screws where **you are sure that they will not land in the open areas** or damage wires or hoses. Not all units will have this cover. If it is not available, skip this step. Reinstall the seat back.

## MAIN DIAGRAM



**WARRANTY LABOR ALLOWANCE:**

**Recall 251003REV Theater Seat Fastener may Damage an LP Hose (Prior Authorization *Required*)**

**Flat Rate Code: 6324 12 Inspected/Defective/Repaired Time Allowed: 1.5 hrs.**

**TOOLS NEEDED**

Battery driver and drill with assorted bits      ¼" drill bit  
Right angle driver      Pin nail gun  
Tape measure      Wrenches & sockets  
Razor Knife      Staple gun  
Marker      Masking tape  
¾" shim/spacer to use temporarily      Cardboard or floor covering

**PART KIT NEEDED – # 10914103 - ordered from revrvparts.com OR Call REV Parts (800) 509-3417**

**RECALL 251003REV PARTS KIT INCLUDES**

- 1 ea. STEEL ANGLE BLACK 2" x 3" x 11"
- 2 ea. CLAMP-2 INS LOOP
- 2 ea. CLAMP-1 1/4 INS LOOP
- 3 ea. BOLT, 1/4-20X1
- 6 ea. WASHER, 1/4 FLAT
- 3 ea. NUT-1/4-20 HH LOCKING PLTD
- 2 ea. SCREW-SHTML #14 X 3/4 HWH PLTD
- 8 ea. SCREW-TEK 1/4-14 X 1 1/4 HWH PLTD
- 4 ea. SCREW SHTML #14 X 1" HWH

**ALL APPROVALS, and CLAIM PAYMENTS must go through REV RV Technical Support at (800) 816-9825.**