



Thor Motor Coach Recall Repair Instructions

Recall #	25V-653 2025-519		
Description/Title:	LP Tank Bracket		
Affected Product Line(s):	Certain MY 2024-25 Indigo & Luminare		
Service Campaign # :	RC000331		
Repair Code:	Inspect with Repair: TMCRC10120V	Document Date:	10/28/2025
Time Allowed:	Inspect with Repair: 2.0	Document Revision:	A

Issue:

It has been discovered the LP tank support tube is too short and has an inferior chassis weld. If the LP tank support tube weld separates from the chassis the LP tank can drop during travel.

Parts:

- **TMC repair kit**
 - 0595351

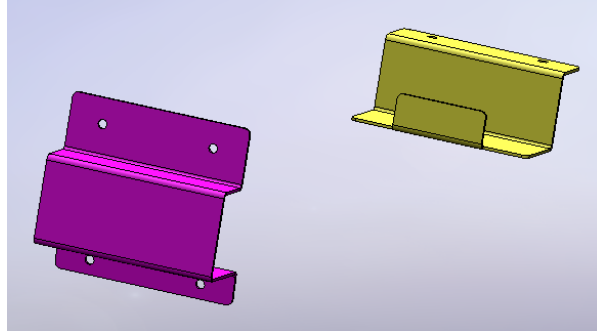
Instructions:

Please note the sidewall and floor are hidden for clarity in the provided images

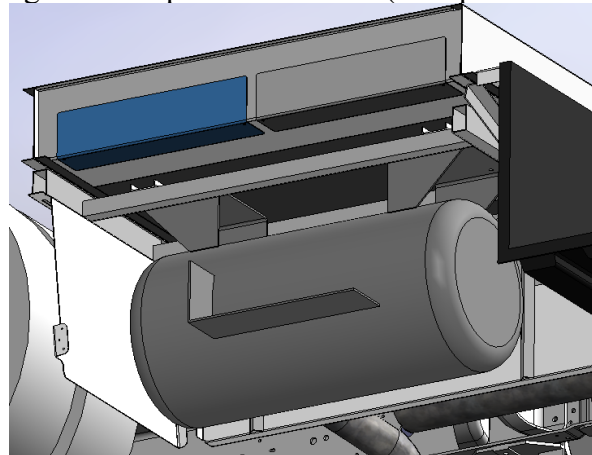


Thor Motor Coach Recall Repair Instructions

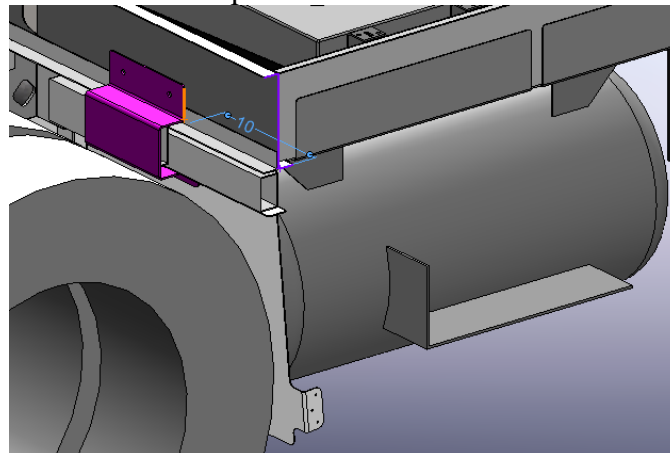
1. Brackets should look like this upon receipt. (except they will be black in color)



2. Remove left holding tank compartment access. (blue part in image)

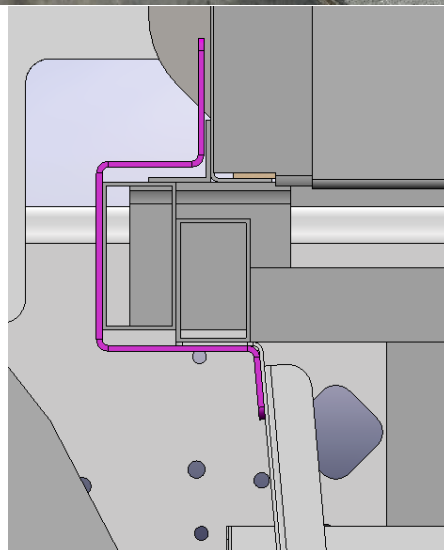


3. Position the rear (left) bracket (shown in magenta color) from the side of the truss facing the wheels. The edge of the bracket should be approx. 10" from the end of the truss. The longer flange should be to the top.





Thor Motor Coach Recall Repair Instructions

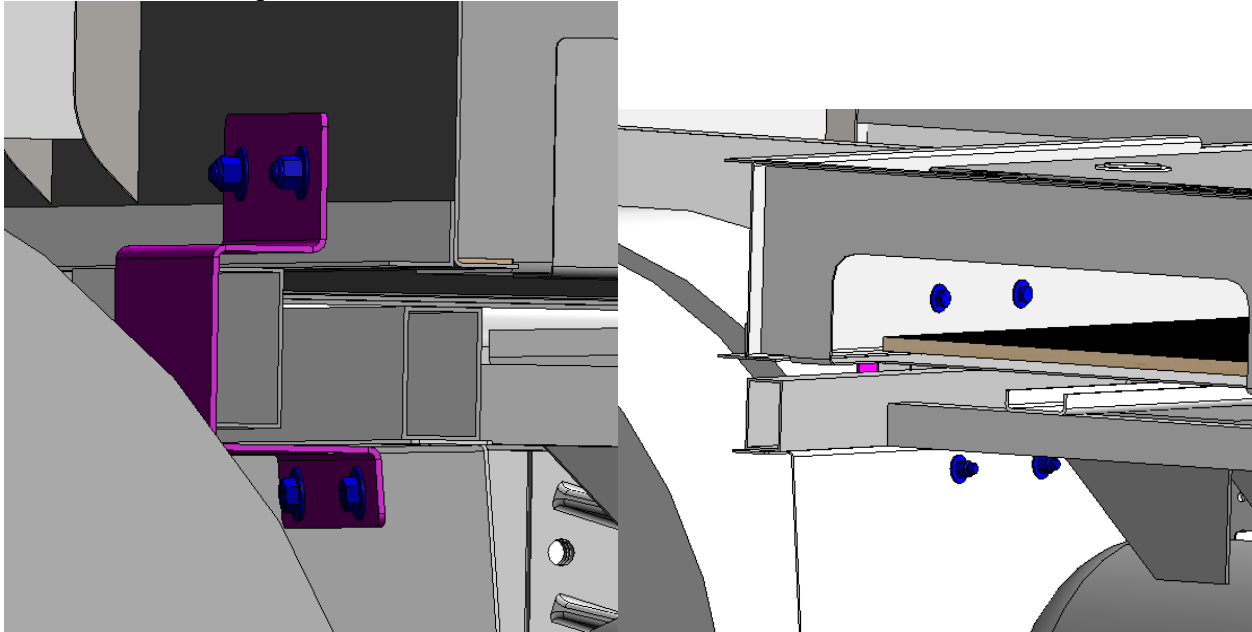


Thor Motor Coach
1-877-500-1020
NHTSA Recall # 25V-653
Transport Canada Recall # 2025-519

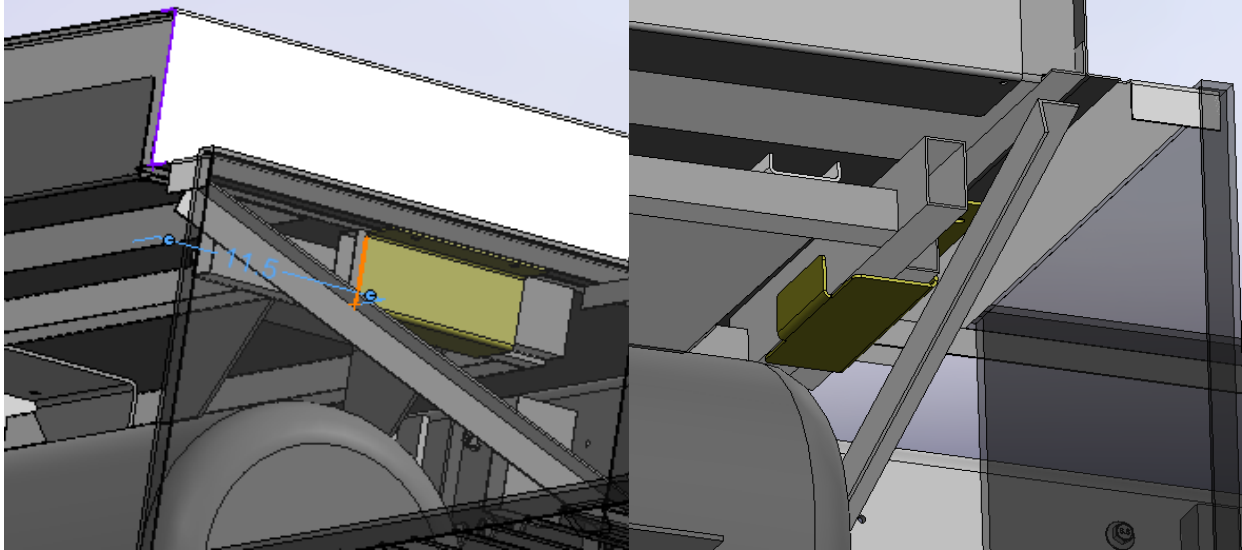


Thor Motor Coach Recall Repair Instructions

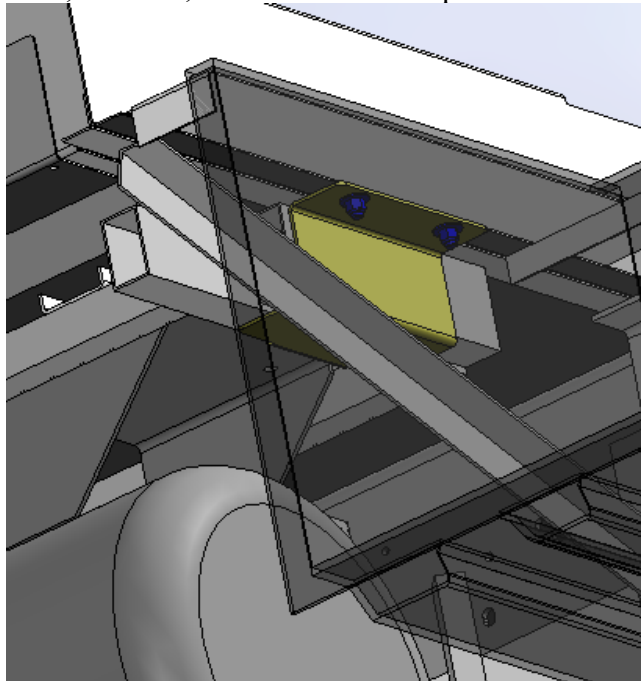
- Using the bracket as a template, mark the hole positions on the truss and debris shield. Drill clearance holes for a 3/8" bolt at these positions. **Be careful not to damage any components/water lines on the opposite side of the truss. May need to strap up the water lines out of the way.** Secure bracket at these locations using 3/8"-16 x 1" Grade 5 hex bolts, washers, and locknuts. Nuts, bolts, and washers shown in blue in the images below. Torque to 30ft.lbs.



5. Position the forward (right) bracket (shown in yellow color) so that it hooks around the tubes supporting the LP bracket. The flange with the holes should meet the bottom of the truss flange above. The edge of the bracket should be approx. 11"-13" from the end of the truss.



6. Using the bracket as a template, mark the hole positions on the truss. Drill clearance holes for a 3/8" bolt at these positions. Secure bracket at these locations using 3/8"-16 x 1" Grade 5 hex bolts, washers, and locknuts. Torque to 30ft.lbs.



7. Reinstall tank compartment access cover. (from step 2)