

# Recall Bulletin 250829REV



|  |  |
|--|--|
| <b>RECALL BULLETIN:</b><br><b>250829REV</b>  | <p>The purpose of this Recall Service Bulletin is to inform REV Recreation Group dealers of the need to inspect and perform needed repairs to the 35-amp waste tank macerator fuse, the fuse block terminals and fuse location diagram key. This affects certain model year 2023-2026 (AMC) American Eagle, American Dream, 2023 and 2024 American Tradition and 2025-2026 Fleetwood Palisade motorhomes. A list of affected motorhome serial numbers appears at the end of this Recall bulletin.</p>  |
| <b>YEAR(S) AFFECTED:</b><br><b>2023-2026</b>   |  |
| <b>PRODUCT(S) AFFECTED:</b><br><br><u><b>FLEETWOOD PALISADE</b></u><br><br><u><b>AMERICAN COACH</b></u><br><b>AMERICAN DREAM</b><br><b>AMERICAN EAGLE</b><br><b>AMERICAN TRADITION</b> | <p><b><u>CONDITION:</u></b><br/>         On American Coach motorhomes affected by this recall campaign, a 35-amp fuse for the waste tank macerator has been determined to be defective and can deform due to heat resulting from a poor electrical connection in the fuse block terminals. Through the investigation of the deformed fuse, it was also determined that the Palisade battery control center area fuse blocks, that contain waste system and other fuses may not match the fuse location diagram key. A melted fuse housing increases the risk of injury or fire.</p> <p><b><u>DEALER CORRECTIVE ACTION:</u></b><br/>         Follow the attached repair bulletin to perform a remedy including a parts kit containing an inline fuse holder to relocate the existing 35 amp circuit for American Coach motorhomes. In addition, for Palisade motorhomes, your dealer will compare the battery control center area fuse locations to the diagram key and correct the fuse location layout along with replacing the fuse location diagram key with a new one.</p> |
| <b>MONTHS OF MANUFACTURE:</b><br><b>JULY 28, 2022 -</b><br><b>AUGUST 14, 2025</b>  | <p><b>Note: This REV RV repair is to be performed by a REV RV dealership technician.</b></p>   |
| <b>MODEL(S) AFFECTED:</b><br><b>ALL</b>  | <p><b>ATTENTION SERVICE, WARRANTY AND PARTS MANAGERS: All prior Authorization Approvals must go through REV RV Dealer Technical Support (800) 816-9825</b></p>   |
| <b>SUBJECT:</b><br><b>MACERATOR FUSE</b><br><b>BLOCK HOUSING -</b><br><b>Diagram Key</b>   | <p><b><u>WARRANTY LABOR ALLOWANCE:</u></b><br/>         Recall 250829REV Macerator Fuse Housing (Prior Authorization required).<br/>         Use Flat Rate Codes: 6322 11 Inspected/Non-Defective (AMC Only)<br/>         Time Allowed: .25 hr.</p>  |
| <b>ISSUED:</b><br><b>OCTOBER 2025</b>  | <p>Use Flat Rate Codes: 6322 12 Inspected/Defective/Repaired (AMC Only)<br/>         Time Allowed: .75 hr.</p> <p>Use Flat Rate Codes: 6323 12 Inspected/Defective/Repaired (Palisade Only)<br/>         Time Allowed: .4 hr.</p>  |
| 2025 REV Recreation Group, Inc.  | <p style="text-align: center;"><b><u>RECALL PARTS KIT: # 10913289</u></b></p> <p style="text-align: center;"><b>Macerator Fuse Housing Parts Kit must be ordered from <a href="http://revrvparts.com">revrvparts.com</a> OR CALL REV Parts (800) 509-3417</b></p> <p style="text-align: center;"><b>**READ THE FOLLOWING BULLETIN CAREFULLY**</b></p>  |

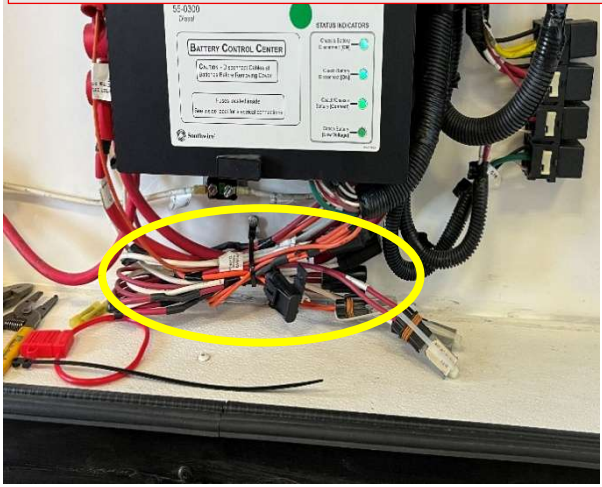
Federal law (section 154 of the national traffic and motor vehicle safety act of 1966) requires that: If you have received a notice of recall or failure to comply from REV Recreation Group or any component Manufacturer, you must repair or otherwise correct the defects on vehicles remaining in your inventory, according to the notification, before selling or leasing the vehicles. Any vehicle lessor receiving this recall notice must forward a copy of the notice to the lessee within ten days.

"It is impossible to know, evaluate and advise the service trade of all conceivable ways in which service might be done or of the possible hazardous consequences of each way. Accordingly, anyone who uses a service procedure or tool must first assure that neither personal safety nor vehicle safety will be jeopardized by the selected service methods."



Below are photos designating the configuration differences that will help you select the correct procedure.

**2023 – Mid 2025 Model Year Fuse Grouping procedure 1**

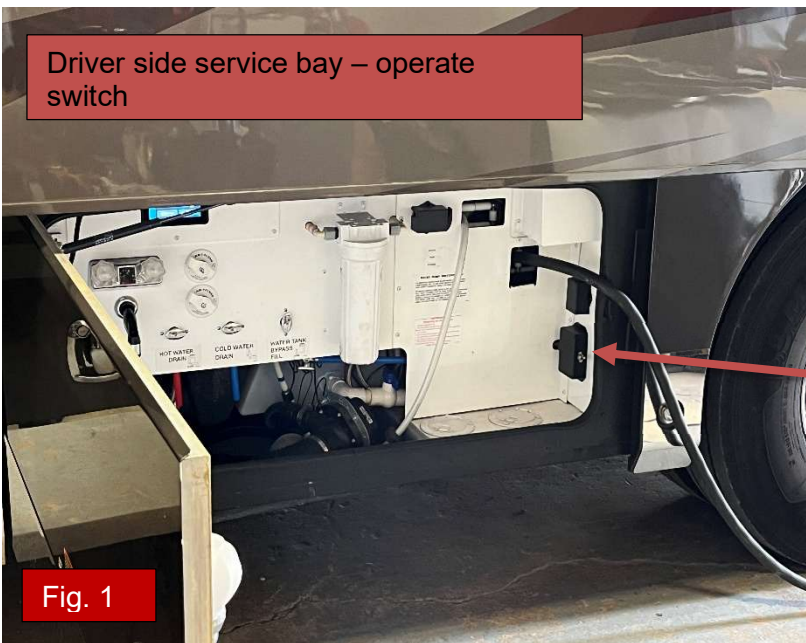


**Mid 2025 -2026 - Fuse Block – procedure 2**

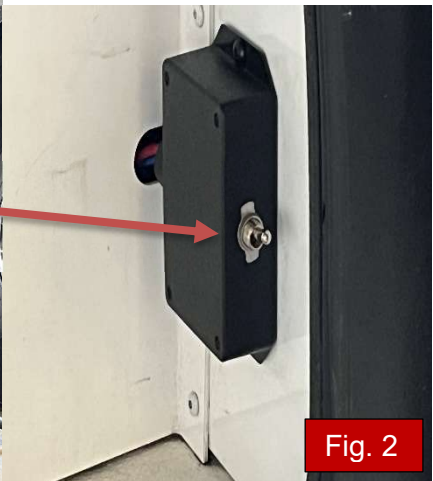


## **Procedure 1**

1. Locate the macerator switch in the service bay on the driver's side of the motor home. Activate the switch to ensure the macerator is working. See Fig 1. If the macerator is working turn it off until the repair procedure is completed.

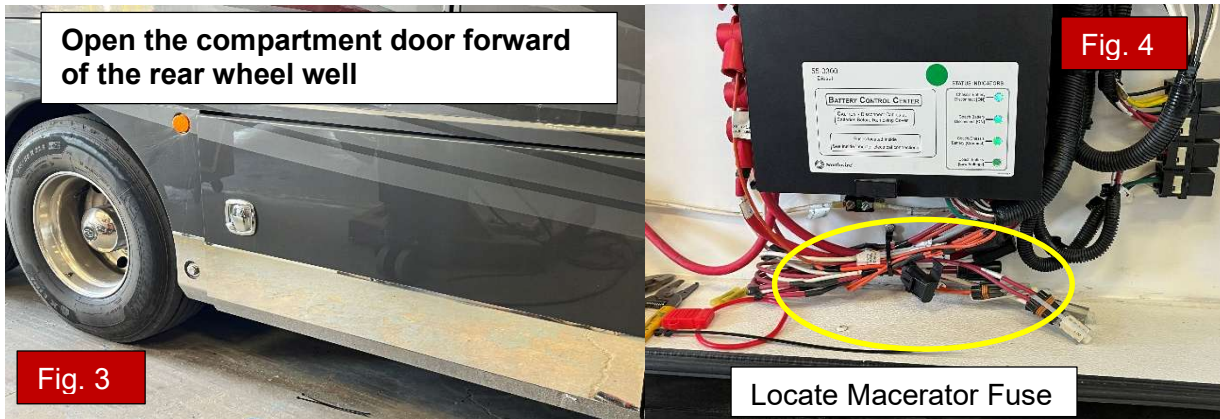


**Fig. 1**



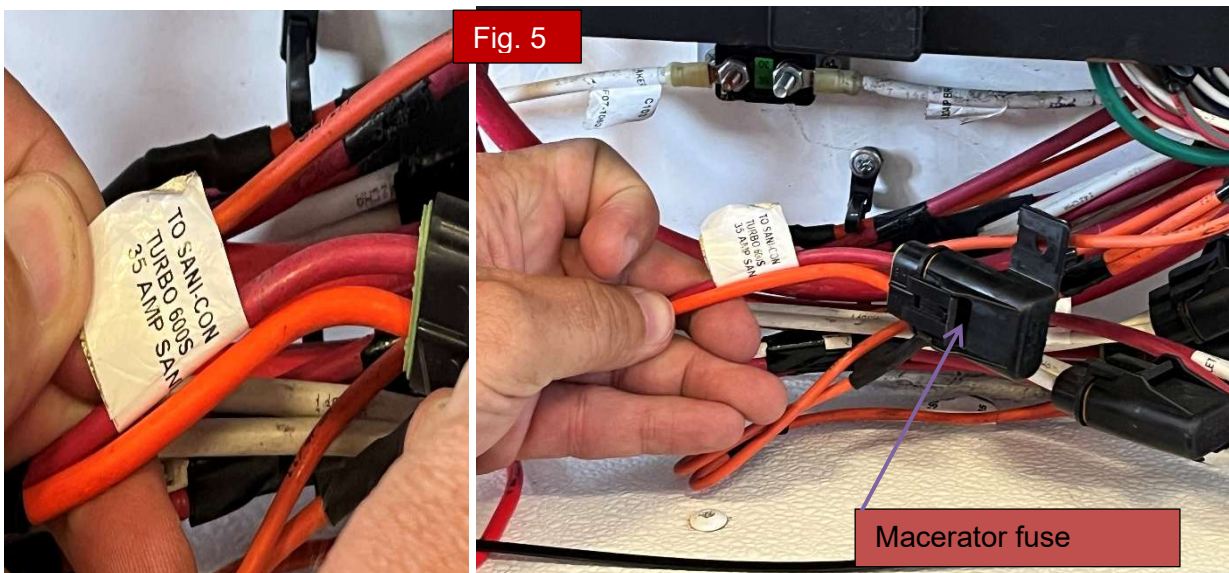
**Fig. 2**

2. Go to the passenger side of the unit. Locate the electrical panel compartment Fig. 3



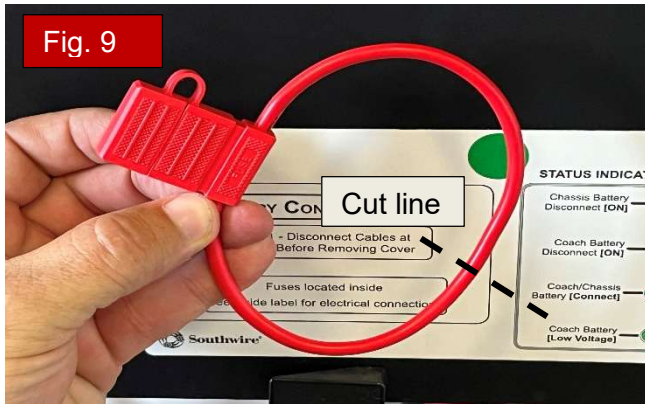
3. Inside the compartment you will see the battery control center (large black electrical box) Fig. 4. Just below or close by will be a grouping of wires with fuse holders.

4. Locate the SANI-CON inline fuse holder. The wire will have an ID tag stating, TO SANI-CON 35 AMP. See Fig. 5 Pull the fuse and return to the macerator switch on the driver's side as shown in Fig. 6 & 7. Activate the switch. If you pulled the correct fuse the macerator will NOT operate. Return the switch to the off position. Go to step 5.



**Note: If the macerator DOES operate, return to the passenger side and select the correct fuse. Perform the test outlined in step 3 until you have positively identified the macerator fuse.**



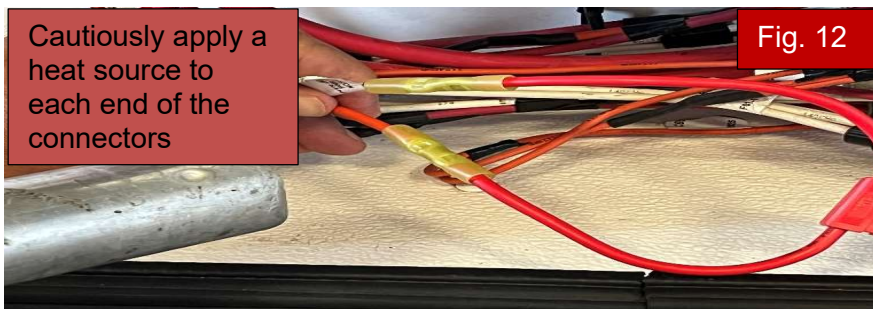


14. With all four (4) wires stripped, add the designated wire connectors to the inline fuse holder wires, making sure to properly crimp on each end.



15. Next crimp on the connectors to the main SANI-CON wires, making sure to properly crimp on each end Fig 11

16. The connectors are heat shrink type connectors. Safely apply a heat source to form and seal each end of the connector. See Fig 12 **Warning: DO NOT DAMAGE THE WIRES OR SURROUNDING AREAS WITH THE HEAT SOURCE.**



17. Install the designated “NEW” LITTLEFUSE brand 35-amp fuse from the Parts Kit into the macerator fuse holder.

**WARNING: DO NOT REUSE THE ORIGINAL FUSE.**

18. If missing, install the small 35 Amp Sani-con label around the wire for the in-line fuse holder from the Parts Kit.

19. Secure the wires located under or near the Battery Control Center with wire ties.

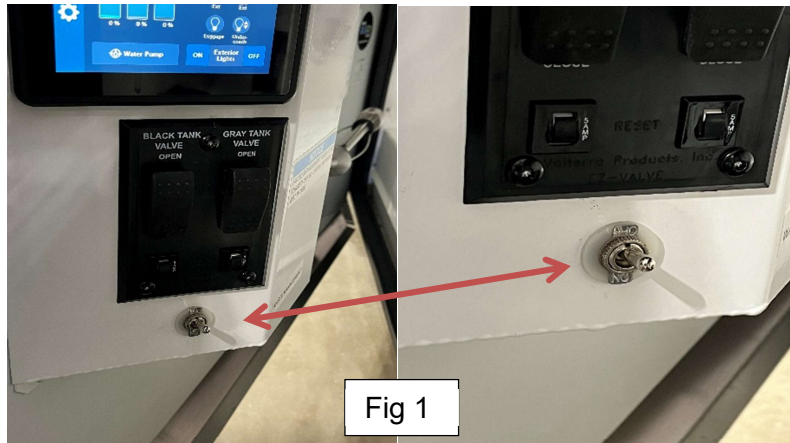
20. Turn on the aux disconnect.

21. Go to the driver’s side compartment and test the operation of the macerator by activating the switch as you did in step 1. Once you have verified it is operating, turn the switch off.

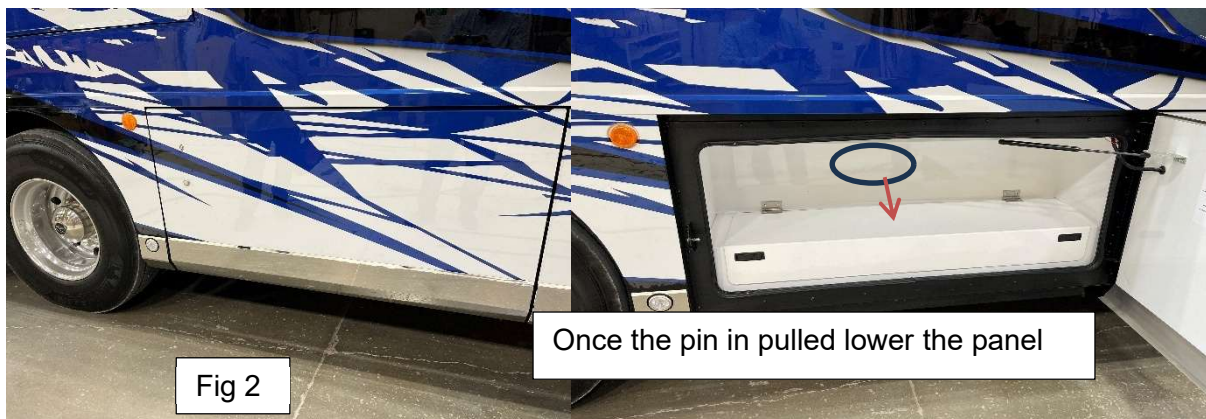
## Procedure 2 - Mid 2025 (manufacture date Oct 2024) through 2026 American Eagle, American Dream motor homes (AMC)

This procedure will provide instructions to remove and relocate the 35 AMP macerator fuse from the fuse block and also determine if the fuse blocks (2) are positioned/oriented properly.

1. Go to the driver's side service compartment and locate the macerator activation switch shown below (Fig 1) on the compartment door. Activate the switch to ensure the macerator is operational. If you hear it, turn the switch off.
2. Go to the entry step area and turn off the disconnect switches.



3. Then go to the passenger side electrical panel compartment located in front of the rear axle. Open the door and locate the interior latches in the upper corners as shown below in Fig 2.

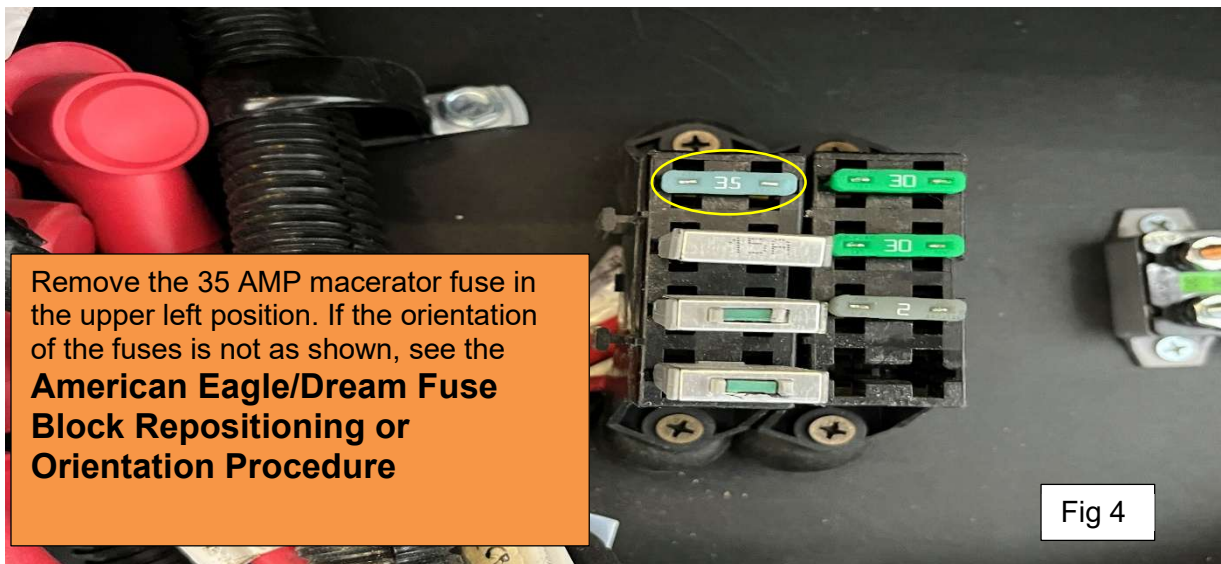


Mid-year 2025 and 26 model year American Eagle and Dream **pre-repair view** shown below (Fig 3)



Fig 3

4. Shown below (Fig 4) is the correct American Coach fuse block configuration. **(pre-repair)**



Remove the 35 AMP macerator fuse in the upper left position. If the orientation of the fuses is not as shown, see the **American Eagle/Dream Fuse Block Repositioning or Orientation Procedure**

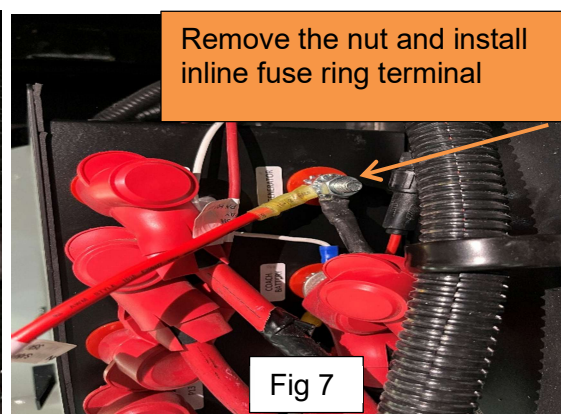
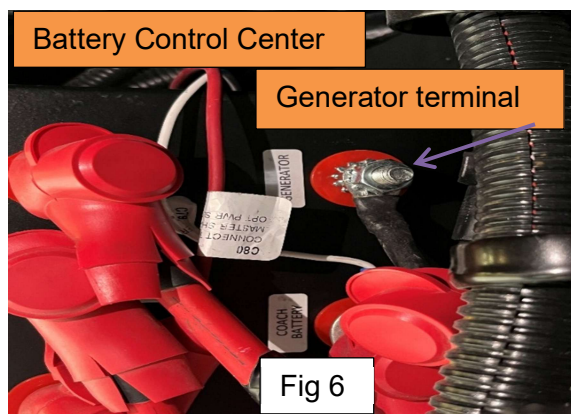
Fig 4

5. Remove the 35 AMP macerator fuse and have it field destroyed.
6. Turn the disconnects on and then go to the driver's side and activate the macerator switch again. IT SHOULD NOT WORK.
7. If it doesn't work, turn off the disconnects and proceed to the next step. If there is an issue, go to the **American Eagle and Dream Fuse Block Repositioning or Orientation Procedure** in this bulletin at the end of this procedure. Compare the unit configuration to the diagram key.

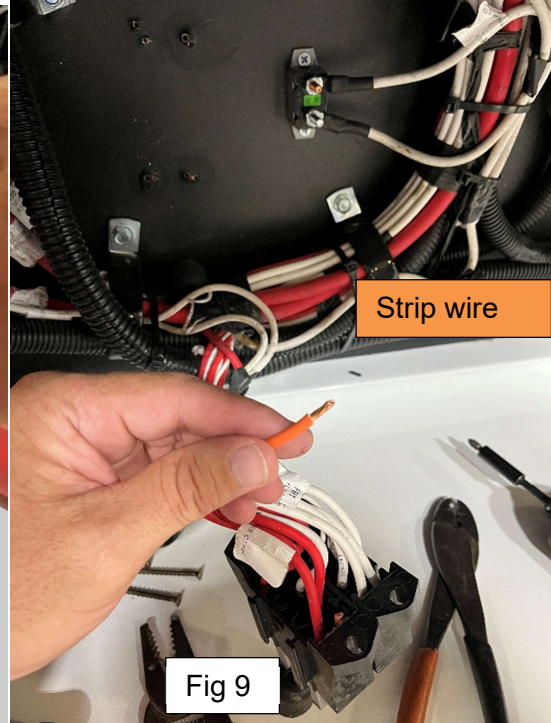
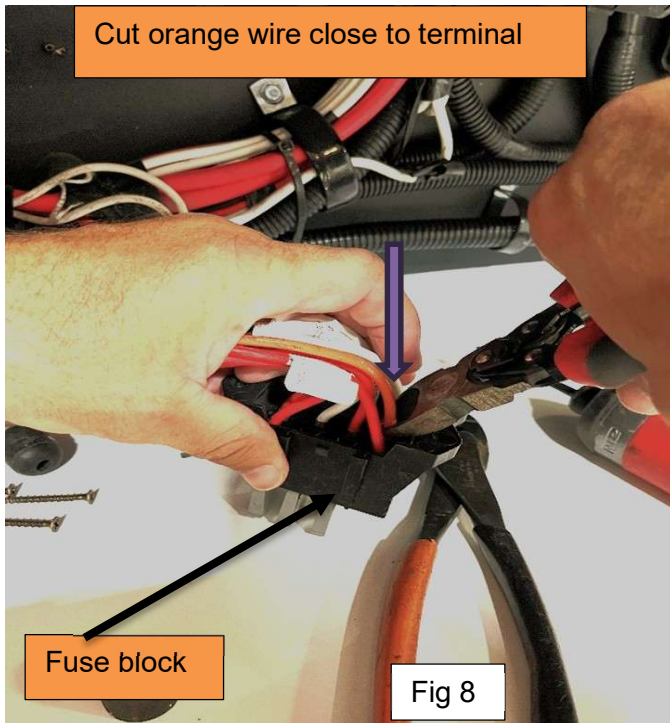
8. Locate the inline fuse holder, 1 diagram key (must have **W12-10009** in the lower corner) SANI-CON label, 1 butt connector and 1 ring connector and 1 new 35 AMP fuse with the name **LITTLEFUZE** on it from the Parts Kit from REV RV. Do not substitute fuse brands.
9. Cut the inline fuse holder wire in the middle.
10. Strip both ends of the inline fuse wire.
11. Crimp on the butt connector as shown below in Fig 5.
12. Crimp on the ring terminal as shown below. Apply heat to shrink and seal the connector.
13. Install the SANI-CON 35 A - **label** on the wire as shown below from the parts kit.



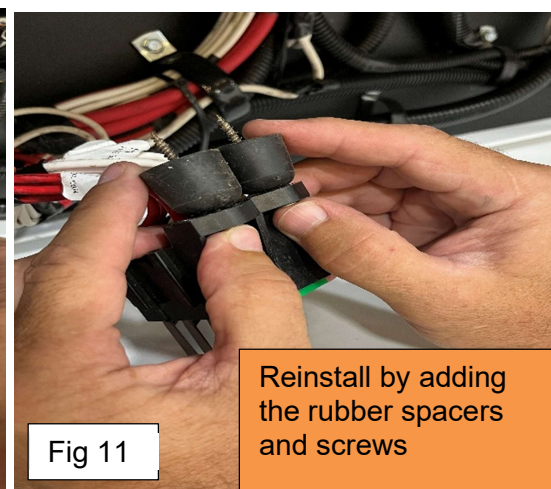
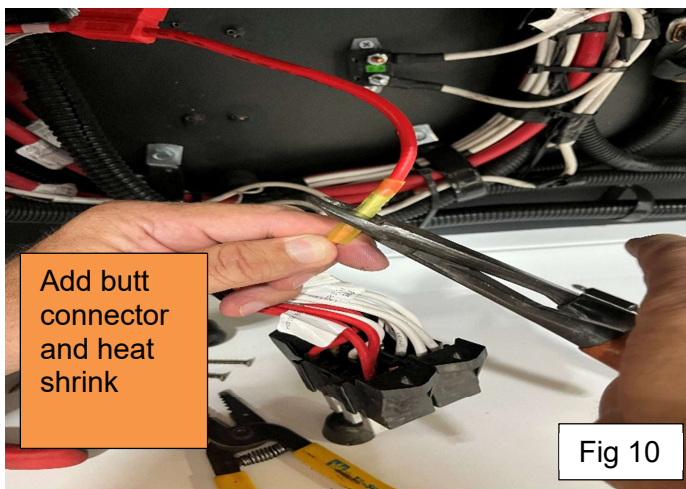
14. Locate the generator stud on the side of the Battery Control Center – BCC as shown below I Fig. 6 and Fig. 7 in the electrical compartment.
15. Remove the nut from the stud.
16. Install the ring terminal from the inline fuse holder onto the Generator stud. Make sure to have the star washer closest to the BCC box.
17. Make sure to put the original wire back on the generator stud.
18. Reinstall the nut onto the stud and tighten.



19. Next locate the two fuse blocks shown in step 4. Remove the fuse block by unscrewing the 4 mounting screws. Keep the screws and rubber spacers available for reinstallation.
20. Turn the fuse block over to show the harness terminals.
21. Cut the 277 circuit orange macerator fuse wire as close as possible to the terminal as shown below in Fig. 8
22. Strip the orange wire in preparation of attaching to the inline fuse wire. Fig. 9



23. Crimp the inline fuse holder wire to the 277 circuit orange macerator fuse wire as shown below in Fig. 10. Heat the butt connector to seal each end. The opposite end of the inline fuse holder wire should be connected with a ring terminal to the generator stud of the Battery Control Center as discussed in step 16. **Caution: Do not mistakenly damage any wires or components when using a heat source on the butt connector.**



24. Reattached the fuse blocks. Use the original screws and rubber spacers as shown in Fig. 11  
Double check the diagram key to ensure accuracy of the fuse orientation.
25. Secure the inline fuse holder with a wire tie as shown below in Fig. 12.
26. Add a dab of black silicone to the previous location of the macerator fuse shown in Fig.13 to eliminate any confusion going forward. Note: The lower right fuse terminal should be open.

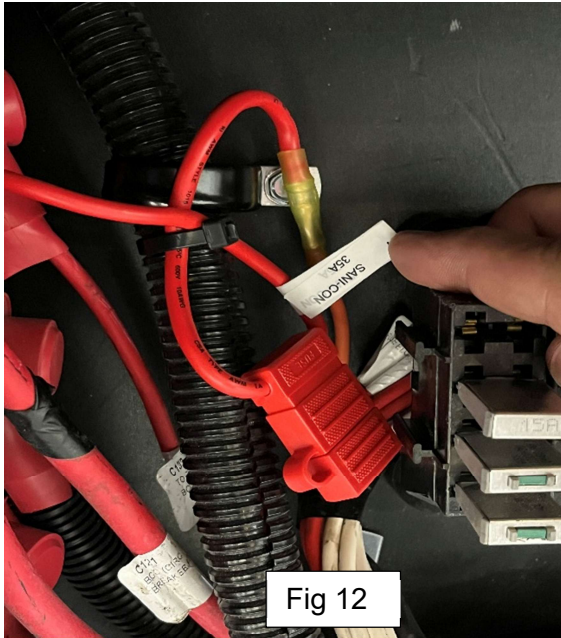


Fig 12

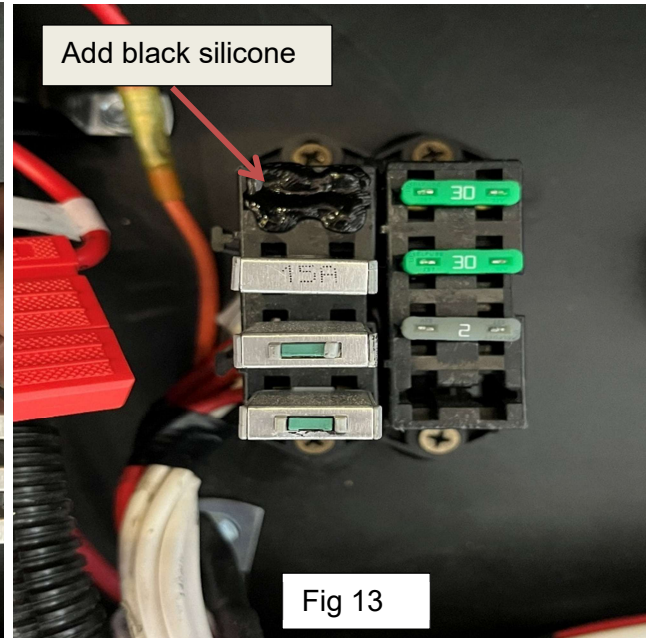


Fig 13

27. Turn on the disconnects
28. Go to the driver's side service bay compartment and activate the macerator fuse to ensure proper operation.
29. Remove the original diagram key adjacent to the fuse block.
30. Install a new fuse block diagram key on the inside surface of the compartment door. Clean the surface before installing the key. **For American Coach units the diagram key must have W12-10009 in the lower corner. The macerator fuse location should be blacked out on the key as shown in Fig.14.**
31. Relatch the access door into place for proper storage in reverse order of step 3.

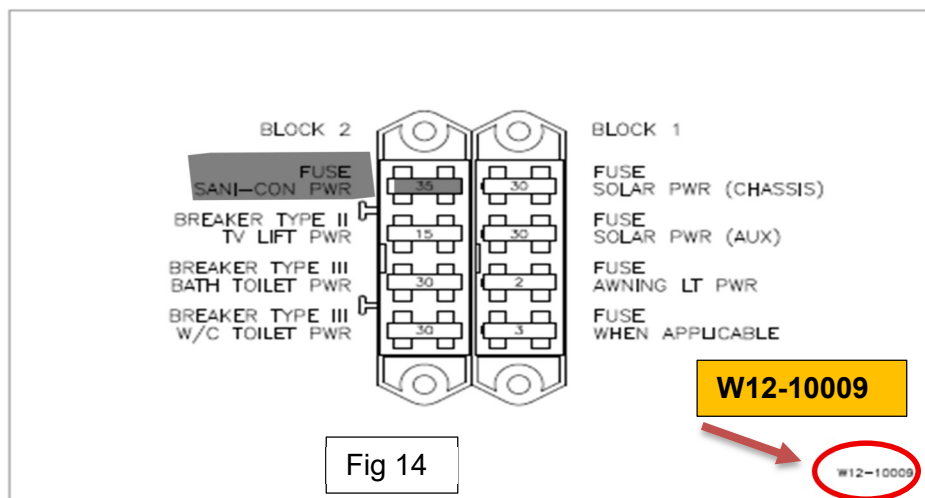
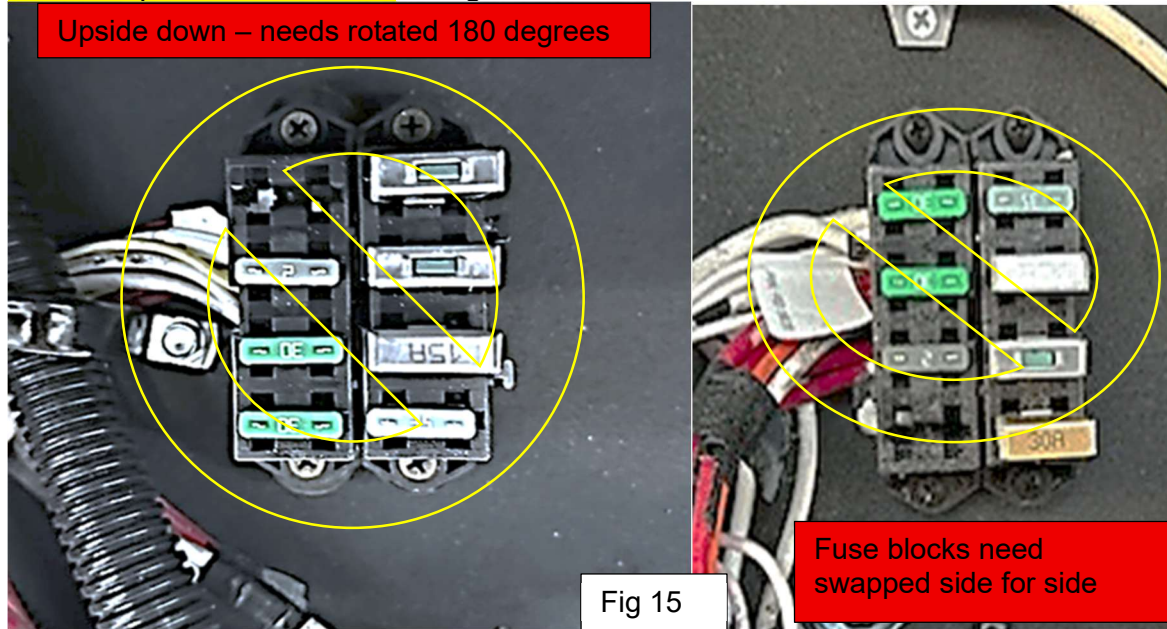


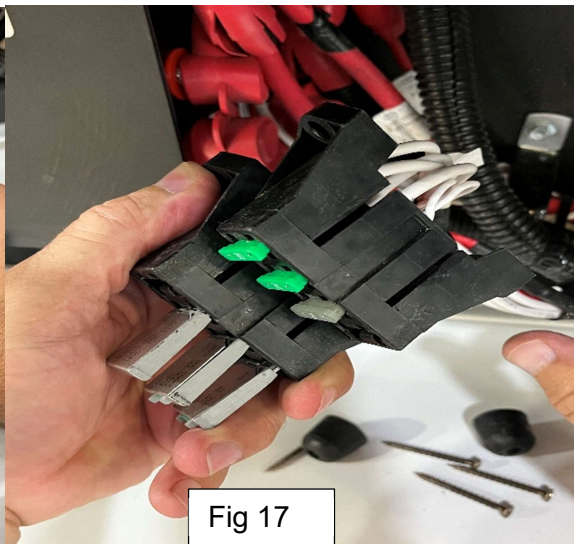
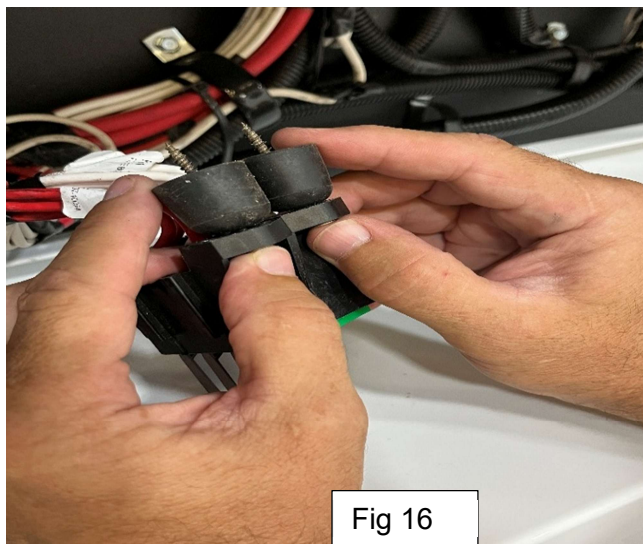
Fig 14

## American Eagle/Dream Fuse Block Repositioning or Orientation Procedure

The fuse blocks may be incorrectly installed to the compartment: meaning upside down or mixed from side to side or both. Look at the diagram key and ensure the orientation is correct. **See incorrect possibilities below** in Fig. 15.



If incorrect orientation or positioning is determined, remove the 4 screws holding the fuse block in place. Some applications have rubber spacers to prevent the wires from being pinched as shown below in Fig. 16 & Fig.17.



Repositioning the fuse block to match the diagram key is shown below Fig.18 & Fig.19. The 2 fuse block housings are interlocked together. Pry and wiggle apart and reposition as required by comparing to the diagram key. Slide back together and reattached with original hardware. Make sure the wire harness is not in a bind or pinched.

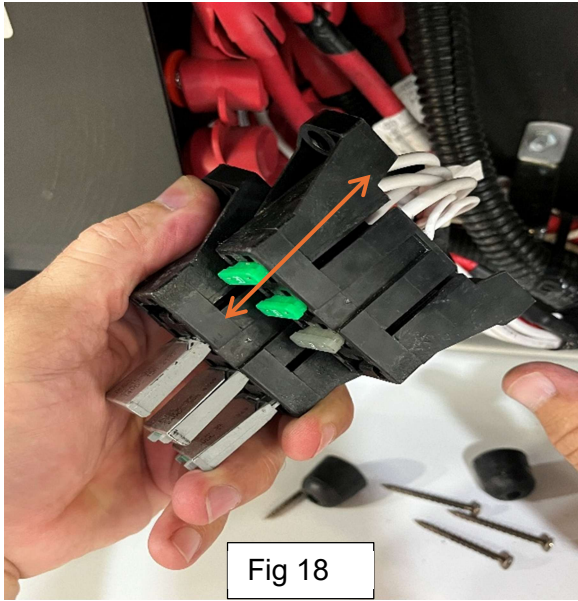


Fig 18

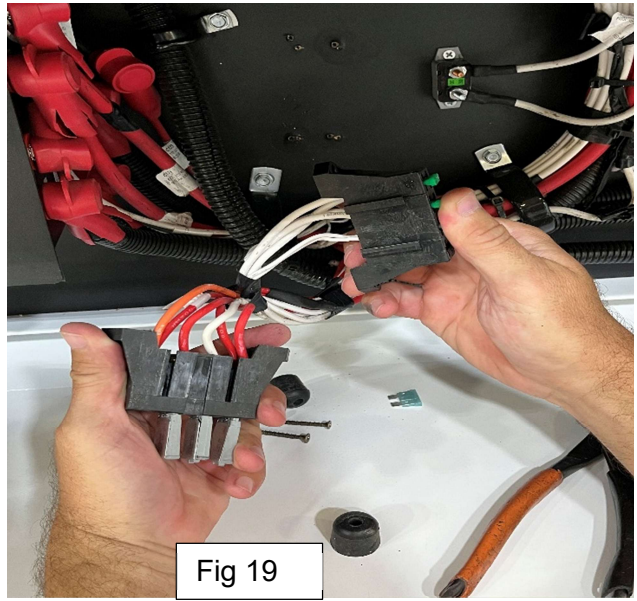
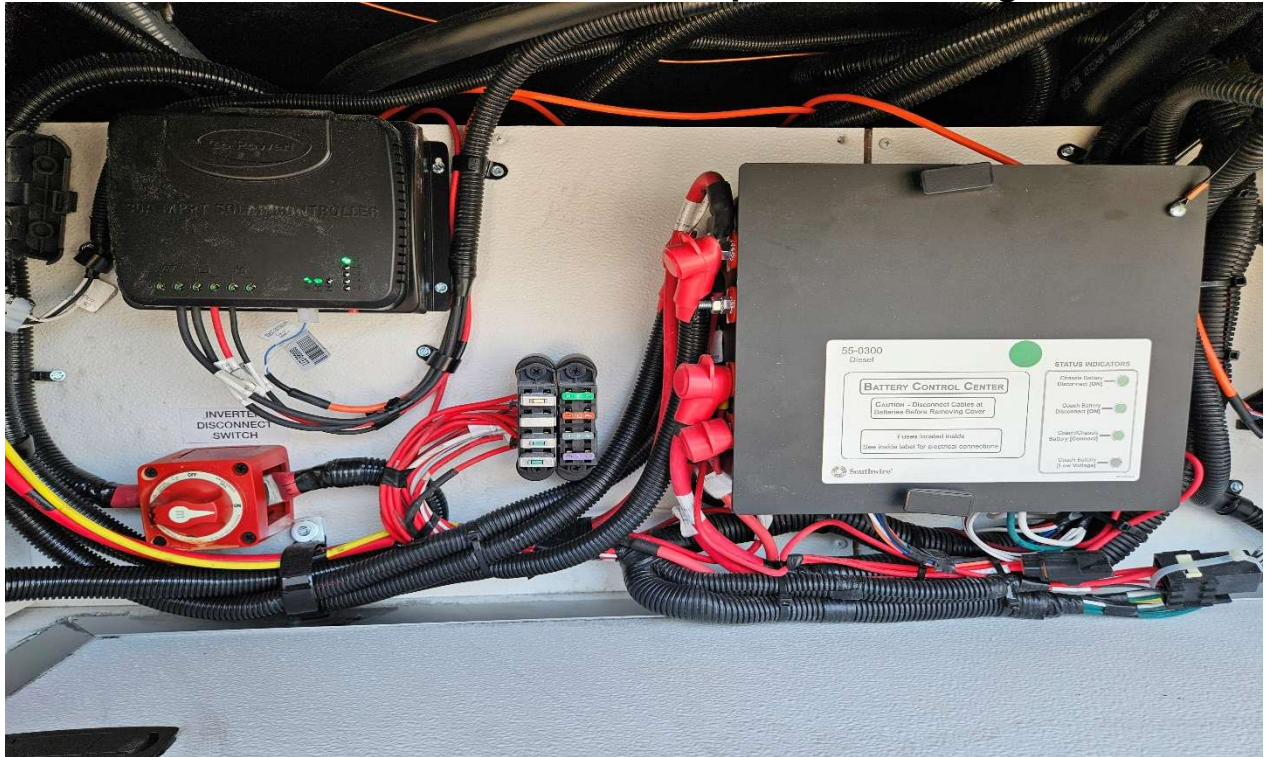


Fig 19

**Note:** Once the orientation is completed you will **remove and discard** the original diagram key from the surface next to the fuse blocks. A new diagram key will be **installed on the compartment door** once all repairs are completed.

## Procedure 3 – 2025/2026 Fleetwood Palisade – Fuse Orientation

### 2025-2026 Palisade Electrical Compartment Configuration

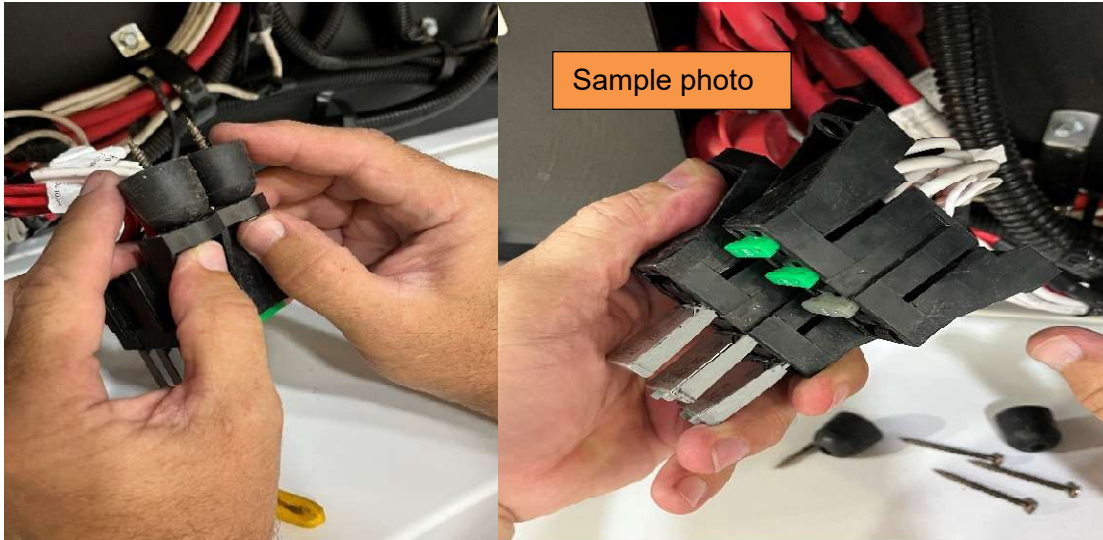


**Only for the 25-26 MY Palisade** - The purpose of this procedure is to ensure proper fuse placement or orientation of the fuse blocks, so they match the diagram key. This will help minimize any potential future diagnostic confusion. **Note: Cutting of wires or fuse removal WILL NOT BE PART OF THIS PALISADE REPAIR.** Read the entire procedure.

1. Go to the entry door area and turn off the disconnect switches before proceeding.
2. Next go to the Palisade electrical compartment on the passenger side of the motor home forward of the rear axle.
3. Compare the fuse block orientation on the diagram key located nearby with the actual fuse positioning. **Note:** If the fuse orientation is correct, remove the original diagram key and add a new diagram key **to the inside of the compartment door** from the parts kit and spot check the fuse circuit operation. File an auth/claim request, if the fuses test good.
4. If incorrect orientation or positioning is determined, **DO NOT RELOCATE THE FUSES OR WIRES.**

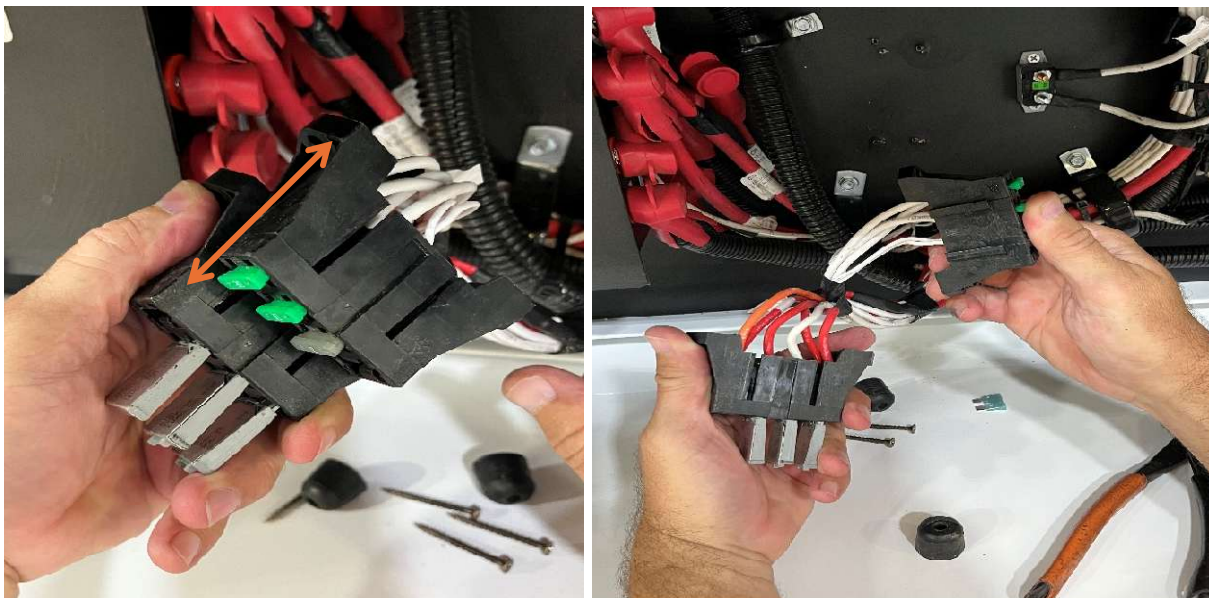
**Please read and review photos below to illustrate repositioning.**

5. The fuse housings could be upside down or mismatched from side to side.
6. The fuse block housings are 2 separate sections interlocked together.
7. **If both fuse blocks are upside down**, remove the 4 screws and the rubber spacers that attach the fuse housings to the compartment wall.
8. Rotate the complete housing 180 degrees to correct the problem. Put the rubber spacers onto the screws. Then screw the fuse blocks back into place using care not to damage the harness.
9. Locate the diagram key labeled **W12-10008 (PALISADE only)** in the parts kit.
10. Clean the inner compartment door surface and install a new diagram key.



11. Repositioning the fuse block to match the diagram key is shown below. The 2 fuse block housings are interlocked together. Pry and wiggle apart and reposition as required by comparing to the diagram key. Slide back together and reattached with original hardware. Make sure the wire harness is not in a bind or pinched.

Continue on next page...

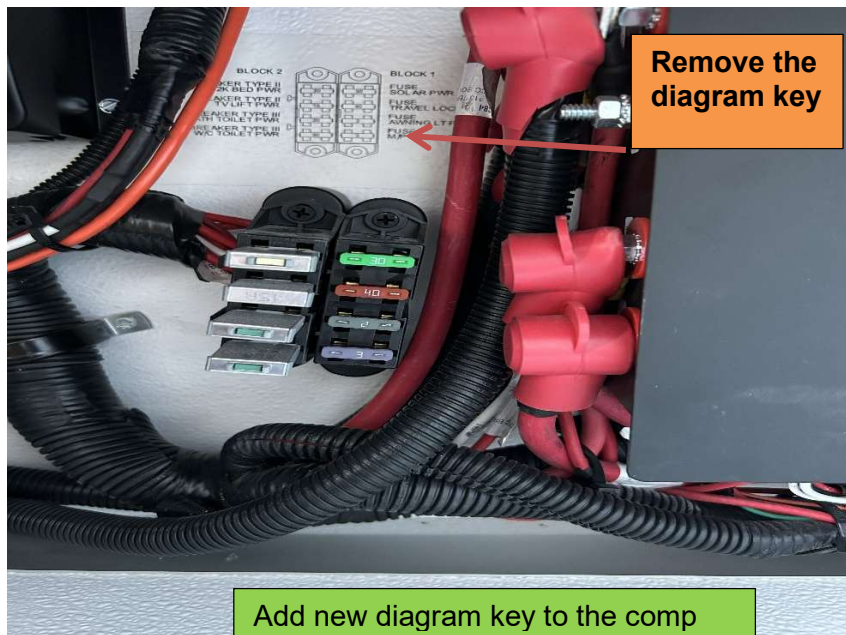
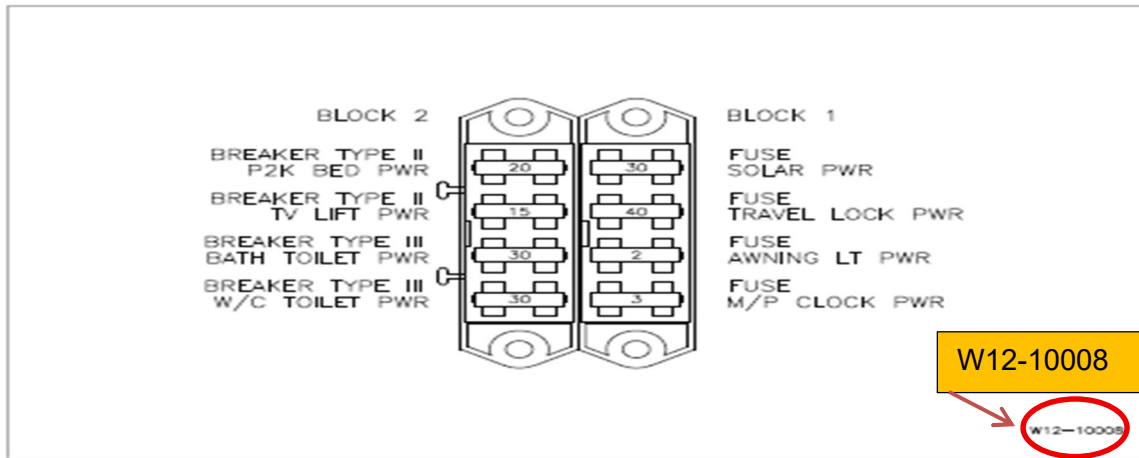


OR

12. If **only one fuse block is upside down**, slide/pry the two (2) sections of the housings apart from each other and rotate the side that causes the mismatch orientation. Compare to the diagram key below.
13. Slide the two (2) sections back together.
14. Put the rubber spacers onto the screws. Then screw the fuse block back into place using care not to damage the harness.
15. Locate the diagram key labeled **W12-10008** in the parts kit.
16. Clean off the inside of the compartment door adjacent to the fuse block and adhere a new label.

17. Discard other parts in the kit as they will not be used.

18. **Note:** Once the orientation is completed you will **remove and discard** the original diagram key from the surface next to the fuse blocks. A new diagram key will be **installed on the compartment door** once all repairs are completed.



Provide details of the repair to your warranty person to file an auth/claim request with REV RV. Use Flat Rate Code 6323 12 Inspected/Defective/Repaired (Palisade only) Time Allowed: .4 hr for this repair.

**WARRANTY LABOR ALLOWANCE:**

**Recall 250829REV Macerator Fuse Block (Prior Authorization)**

Use Flat Rate Code: 6322 11 Inspected/Non-Defective (AMC only) Time Allowed: .25 hr.

Flat Rate Code: 6322 12 Inspected/Defective/Repaired (AMC only) Time Allowed: .75 hr.

Flat Rate Code: 6323 12 Inspected/Defective/Repaired (Palisade only) Time Allowed: .4 hr.

**TOOLS AND PPE**

|                |               |                                   |
|----------------|---------------|-----------------------------------|
| Wire Strippers | Wire Crimpers | Battery driver with assorted bits |
| Wheel chocks   | Heat gun      | Cleaner and rag                   |

**PART KIT NEEDED – # 10913289 ordered from [revrvparts.com](http://revrvparts.com) OR Call REV Parts (800) 509-3417**

RECALL, 250829REV MACERATOR FUSE HOUSING

10913178 - PALISADE LABEL - QTY 1  
10913179 - EAGLE/DREAM LABEL - QTY 1  
10913180 - 10 GA BUTT CONNECTOR - QTY 2  
10913182 - 10 GA 5/16" RING TERMINAL - QTY 1  
10913285 - 40 AMP IN LINE FUSE TAG - QTY 1  
10913249 - 35 AMP SANI-CON TAG - QTY 1  
10913277 - 35 AMP LITTLEFUUSE BLADE FUSE -QTY 1

**ALL APPROVALS, and CLAIM PAYMENTS must go through REV RV Technical Support at (800) 816-9825.**

**SEE NEXT PAGE FOR AFFECTED MOTORHOME SERIAL NUMBERS**