


RRC-30-25-001-1: Improper Grounding in High Voltage Distribution Box

Rivian has decided that a defect which relates to motor vehicle safety exists in certain model year 2025 R1T and R1S vehicles that may have been built with an improperly grounded connection inside the high voltage distribution box, which is located inside the HV battery. If the grounding fails, the vehicle may experience a loss of motive power without warning, increasing the risk of a crash. Rivian is not aware of any crashes, injuries, or fatalities related to this condition. Pursuant to its recall determination, Rivian will either re-secure the ground connection or replace the HV battery.

Document Type	Safety Recall Bulletin
Date	August 26, 2025
Affected Region(s)	USA
Affected Model(s)	R1T, R1S
Model Year(s)	2025
Approximate Build Dates	September 2024-February 2025
 Refer to Open Containments in ServiceOS to determine if this document applies to a specific vehicle.	
Vehicle System	30 - HV Battery
Minimum Service Location	Service Center

Potentially Required Parts

Part Number	Quantity	Engineering Name	Service Name/Notes
One of the following:			
Refer to the parts catalog for part number and inventory information.	1	N/A	HV Battery, Model year 2025+, New
Refer to the parts catalog for part number and inventory information.	1	N/A	HV Battery, NCA, Remanufactured

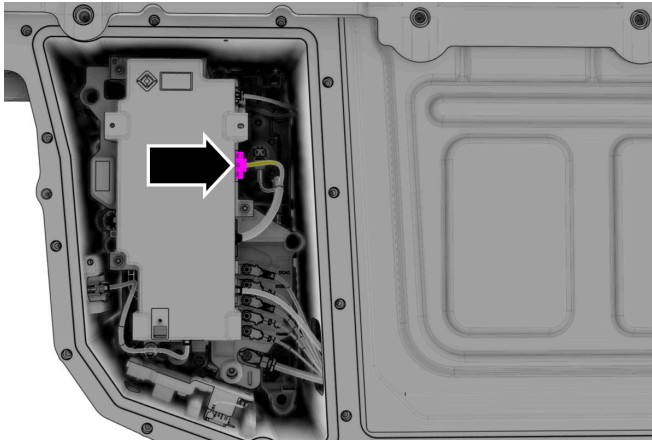
! **Attention:** The parts listed in this table are only for unique steps that are called out in this bulletin. Some sections of this bulletin might refer to Service Manual procedures which require additional parts. Always review the bulletin and all potentially related Service Manual procedures before ordering parts and beginning work.

Potentially Required Tools:

Tool Number	Tool Name
McMaster-Carr 98356A157	Helical insert installation kit
McMaster-Carr 8865A166	Drill depth stop
McMaster-Carr 8865A185	Tap depth stop
McMaster-Carr 29305A64	13/64 inch drill bit
McMaster-Carr 2712N11	6 inch drill extension
McMaster-Carr 2674A71	7 inch tap extension
McMaster-Carr 46365A33	Nylon mesh scuff pad, very fine grade

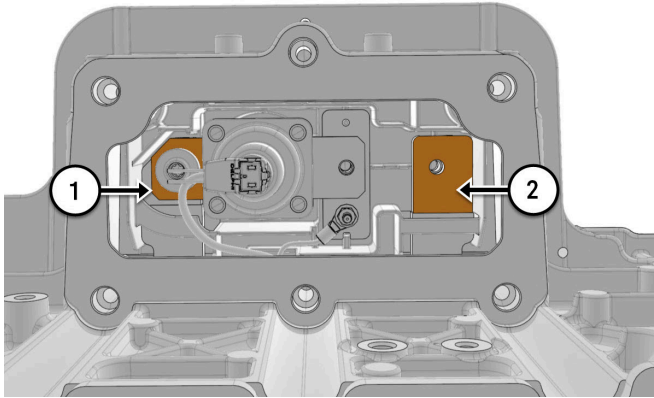
Inspection

1. Remove: Access Panel, High Voltage Distribution Box (refer to service manual procedure 305431510).
- 2.



3. At the rear of the component: Using the multimeter: Check DC voltage:

- + to ground
- – to ground



1	+
2	-

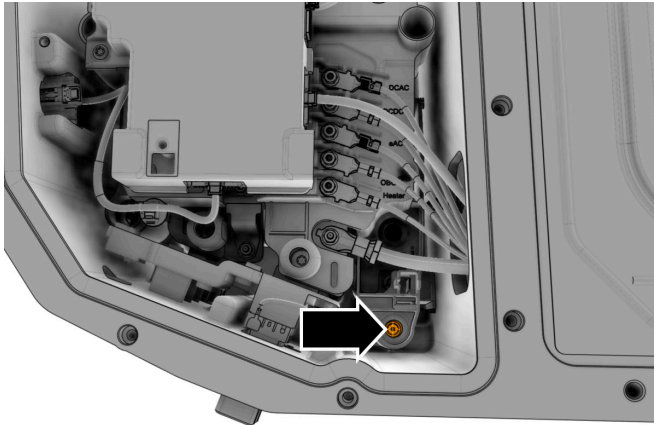
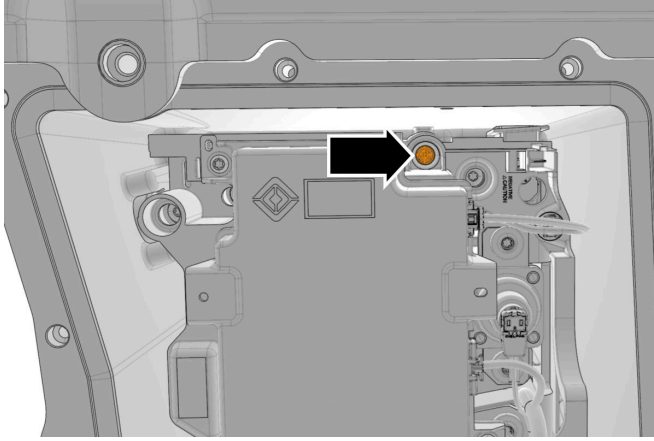


Note: Make sure that the voltage drops to 50V or less. If voltage remains above 50V: Escalate for diagnostic assistance.



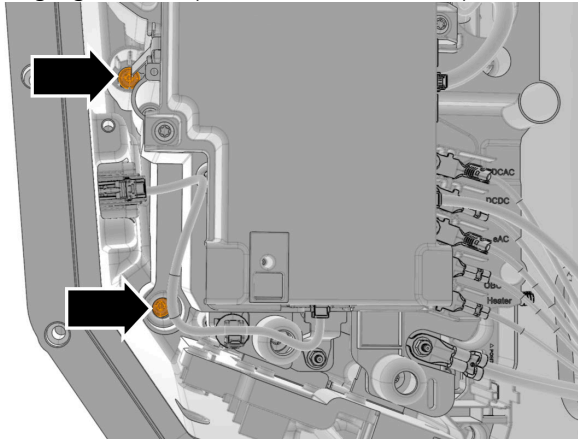
Note: Removing the leads causes voltage to increase again.

4. At the front of the component: On the highlighted component(s): Perform: Torque check.



- If either fastener is torqued below 5.9 Nm:
 - Replace: HV battery (refer to service manual procedure 301010010).
 - Reinstall all components that were removed for access and replace all non-reusable components. Refer to the service manual procedures referenced in this document for additional component reusability information and torque specifications.
 - No additional work is required.
- For any fastener that is torqued 5.9 Nm or higher:
 - Tighten the fastener to 6.5 Nm.
 - Continue to the next step.

5. On the highlighted component(s): Perform: Torque check.



- For any fastener that is torqued below 5.9 Nm: Perform the [Install Helical Insert](#) section on the affected fastener(s).
- For any fastener that is torqued 5.9 Nm or higher: Tighten the fastener to 6.5 Nm.



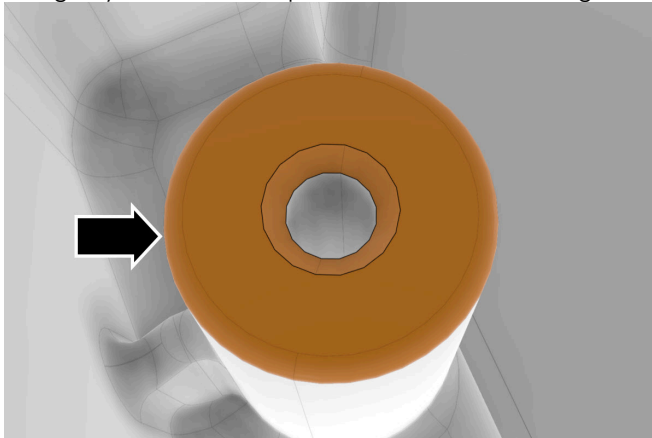
Note: If both fasteners were torqued 5.9 Nm or higher: No additional work is required. Reinstall all components that were removed for access and replace all non-reusable components. Refer to the service manual procedures referenced in this document for additional component reusability information and torque specifications.

Install Helical Insert

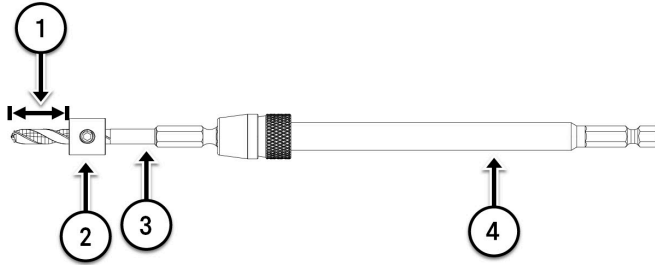


Note: Perform the steps in this section on the holes for the fasteners that were identified in the previous section.

1. Remove: High Voltage Distribution Box (refer to service manual procedure 305430510).
2. Using a nylon mesh scuff pad: Remove the e-coating from the highlighted area.

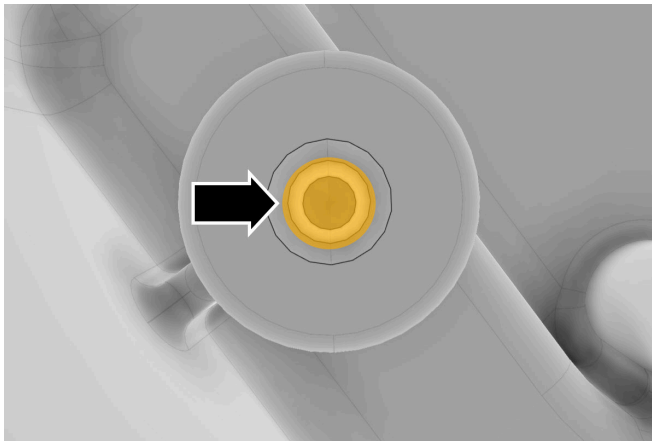


3. Assemble:



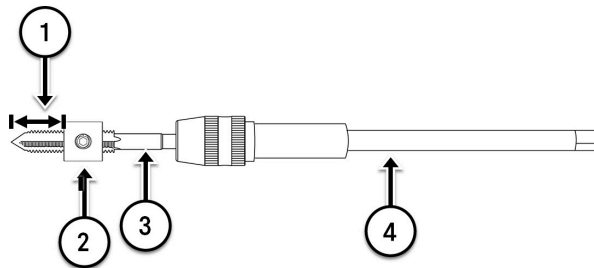
1	25 mm	
2	Drill depth stop	McMaster-Carr 8865A166
3	13/64 inch drill bit	McMaster-Carr 29305A64
4	6 inch drill extension	McMaster-Carr 2712N11

4. Drill:



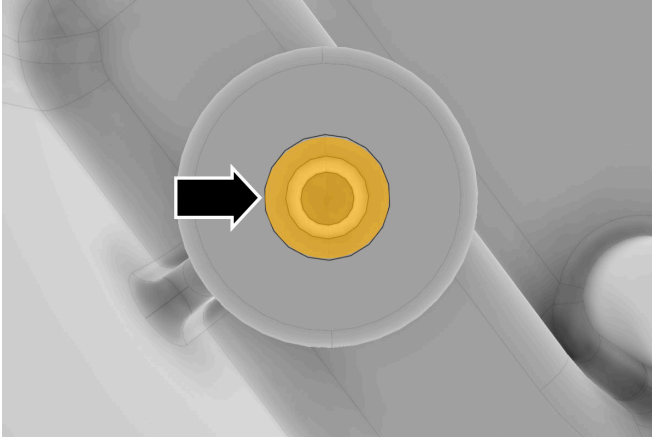
Note: While drilling: Have an assistant use a vacuum to catch any debris.


5. Assemble:




1	25 mm	
2	Tap depth stop	McMaster-Carr 8865A185
3	Tapping tool	Included with McMaster-Carr 98356A157
4	7 inch tap extension	McMaster-Carr 2674A71

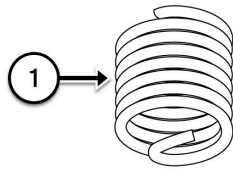
6. Using the tool that was assembled in the previous step: Create new threads in the highlighted area.



 **CAUTION:** Do not use power tools.

 **Note:** Have an assistant use a vacuum to catch any debris.

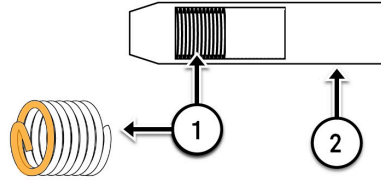
7. Identify the appropriate helical insert: M5 x 0.8 x 15mm.



1	Helical insert	Included with McMaster-Carr 98356A157
---	----------------	---------------------------------------

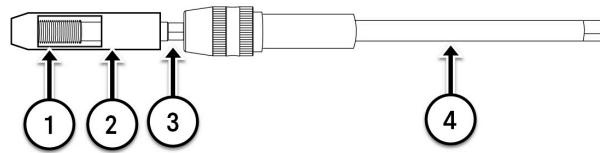
8. Assemble:

- a. Install the helical insert into the installation guide, as shown.



1	Helical insert	Included with McMaster-Carr 98356A157
2	Helical insert installation guide	Included with McMaster-Carr 98356A157

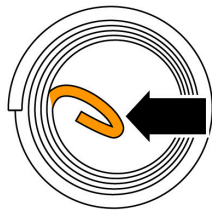
b.



1	Helical insert	Included with McMaster-Carr 98356A157
2	Helical insert installation guide	Included with McMaster-Carr 98356A157
3	Helical insert installation tool	Included with McMaster-Carr 98356A157
4	7 inch tap extension	McMaster-Carr 2674A71

9. Fully install the helical insert into the previously tapped hole. Make sure that the insert does not stick out from the housing.

10. Using a hammer and long drive pin punch: Break off the highlighted section of the helical insert. Using a pick: Remove the broken off section from the hole and discard it.



11. Vacuum the area to remove any debris.

12. Reinstall: High Voltage Distribution Box (refer to service manual procedure 305430510).

13. Reinstall: Access Panel, High Voltage Distribution Box (refer to service manual procedure 305431510).

Labor Codes

Labor Code	Description
RRC302500100	RRC-30-25-001 not applicable
RRC302500101	Perform torque check
RRC302500102	Perform torque check; replace HV battery
RRC302500103	Perform torque check; install one helical insert
RRC302500104	Perform torque check; install two helical inserts
<i>Contact ServiceDocumentFeedback@rivian.com regarding labor codes and document content.</i>	