

# ***SERVICE PROCEDURE***

**25511**  
**September, 2025**

## **SUBJECT: SAFETY RECALL**

**Park Brake in certain 2024 thru 2026 IC Bus™ CE Series school buses built 09/21/2023 thru 07/28/2025 and 2025 IC Bus™ Electric CE Series school buses built 10/14/2024 thru 10/21/2024 with feature code 0004100 (Hydraulic Brakes) and without 0004GAS (Powered Park Brake)**

## **CUSTOMER LETTER**

Print ready (PDF file) copy of the [Customer Letter](#)

## **DEFECT DESCRIPTION**

The park brake tension spring was not coated properly allowing the spring to corrode and/or fracture.

Corrosion of the park brake tension spring may reduce pressure in the parking brake assembly resulting in a vehicle unexpectedly moving, increasing the risk of property damage or personal injury.

## **MODELS INVOLVED**

This safety recall involves certain 2024 thru 2026 IC Bus™ CE Series school buses built 09/21/2023 thru 07/28/2025 and 2025 IC Bus™ Electric CE Series school buses built 10/14/2024 thru 10/21/2024 with feature code 0004100 (Hydraulic Brakes) and without 0004GAS (Powered Park Brake).

## **ELIGIBILITY**

This procedure applies ONLY to vehicles marked in the International® Service Portal<sup>SM</sup> with Safety Recall 25511. Also complete any other open campaigns listed on the Service Portal at this time.

---

### **VEHICLE RECALL 25511**

© 2025 IC Bus, LLC. All rights reserved.  
All marks are trademarks of their respective owners.

## **PARTS INFORMATION**

Part Number	Part Description	Quantity
4058161C1	Retaining E-clip	Obtain Locally
2500673C91	Universal Joint Strap Kit (for VIN 4DRGVMMP6SB505509)	1

**Table 1** Parts Information

## **PARTS INFORMATION**

Part Number	Description	Bus Wheel Base	Qty of Buses per Cable Part Number
4443663C1	Park Brake Cable	169"	65
4443664C1	Park Brake Cable	193"	74
4445269C1	Park Brake Cable	217"	156
4445270C1	Park Brake Cable	236"	52
4445271C1	Park Brake Cable	254"	815
4445272C1	Park Brake Cable	276"	3,319
4445273C1	Park Brake Cable	158"	53
4573291C1	Park Brake Cable	217" New Gen Bus	4DREPE2P4SB461584
4573301C1	Park Brake Cable	276" New Gen Bus	4DREPE2P4SB461584

**Table 2** Parts Information

## **SERVICE PROCEDURE**

**WARNING!** To prevent personal injury and / or death, or damage to property, NEVER service a high-voltage vehicle without completing High-Voltage Safety Training. Before working on vehicle, read and obey High-Voltage Safety, and Lock-Out Tag-Out safety procedures and information.

**WARNING!** To prevent personal injury and / or death, wear and use approved high-voltage Personal Protection Equipment (PPE) when near a high-voltage electric vehicle. Inspect PPE before use. Do not use gloves or other PPE with expired dates, holes, cracks, or damage. NEVER touch energized ORANGE high-voltage cables or high-voltage components without wearing approved high voltage PPE.

**WARNING!** To prevent personal injury and / or death, or damage to property, read all information in the Safety Information and High-Voltage Safety sections of the service manual.

**WARNING!** To prevent personal injury and / or death, or damage to property, park vehicle on hard flat surface, turn the engine off, set the parking brake and install wheel chocks to prevent the vehicle from moving in either direction.

**WARNING!** To prevent personal injury and / or death, or damage to property, if the vehicle must be raised, do not work under the vehicle supported only by jacks. Jacks can slip or fall over.

**WARNING!** To prevent personal injury and / or death, always wear safe eye protection when performing vehicle maintenance.

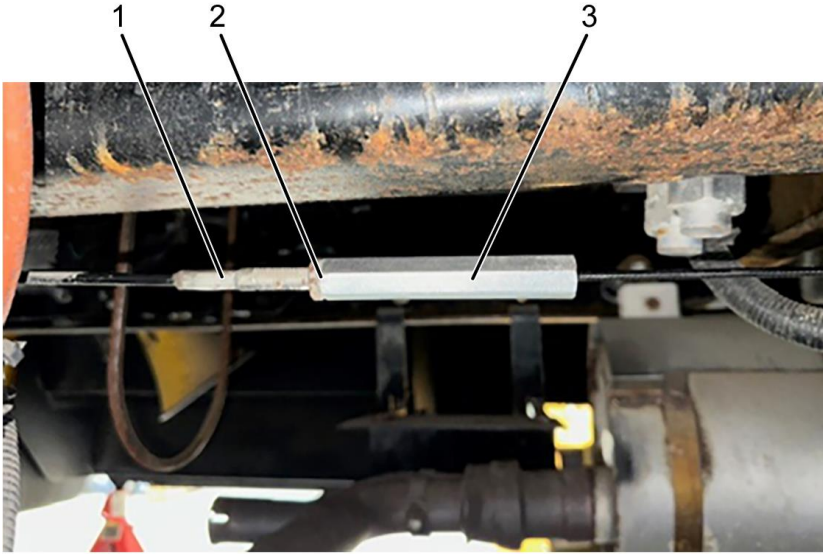
**WARNING!** To prevent personal injury and / or death, or damage to property, allow engine / vehicle components to cool before servicing.

**WARNING!** To prevent personal injury and / or death, or damage to property, keep flames or sparks away from vehicle and do not smoke while servicing the vehicle's batteries. Batteries expel explosive gases.

1. Park vehicle on flat surface.
2. Shift transmission or drive mode selector to Park (P) or Neutral (N) and set parking brake.
3. Turn ignition Key to OFF position.
4. For Battery Electric Vehicle (BEV), turn 12V and high-voltage disconnect switches to OFF position.
5. Install wheel chocks.
6. Ensure parking brake is disengaged.
7. Refer to Table 2 Parts Information or International® Service Portal<sup>SM</sup> to determine wheel base.

---

**VEHICLE RECALL 25511**



0000491541

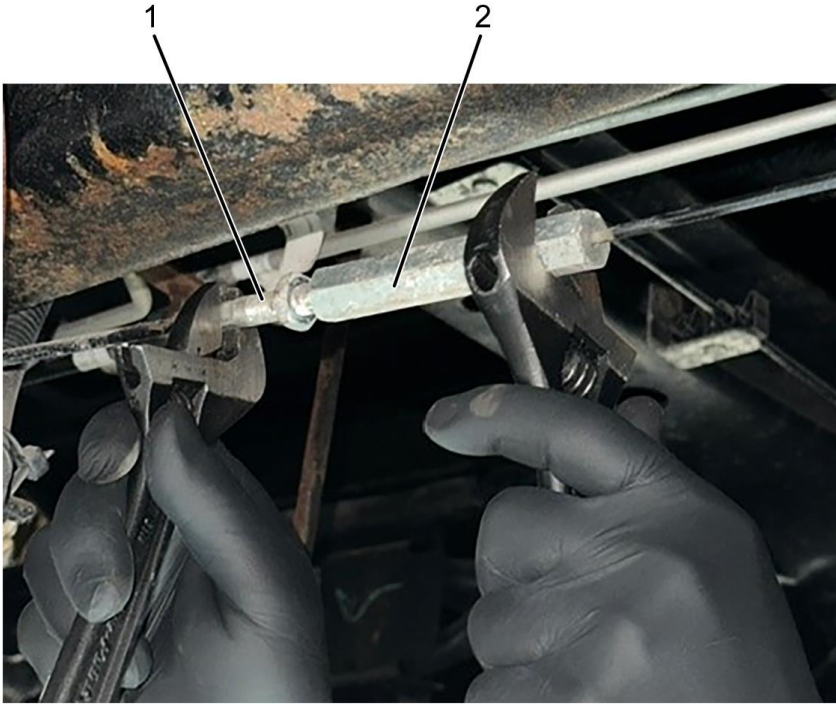
**Figure 1. Rear Parking Brake Cable – Turnbuckle**

1. Front cable
  2. Jam nut
  3. Turnbuckle
8. Access rear parking brake cable turnbuckle (Figure 1, Item 3) from under the vehicle. Loosen jam nut (Figure 1, Item 2) to disconnect rear parking cable from front cable (Figure 1, Item 1).

---

**VEHICLE RECALL 25511**

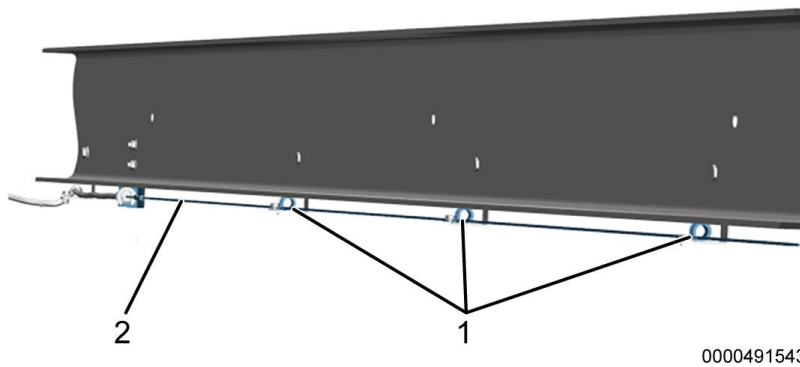
© 2025 IC Bus, LLC. All rights reserved.  
All marks are trademarks of their respective owners.



0000491542

**Figure 2. Rear Parking Brake Cable – Turnbuckle**

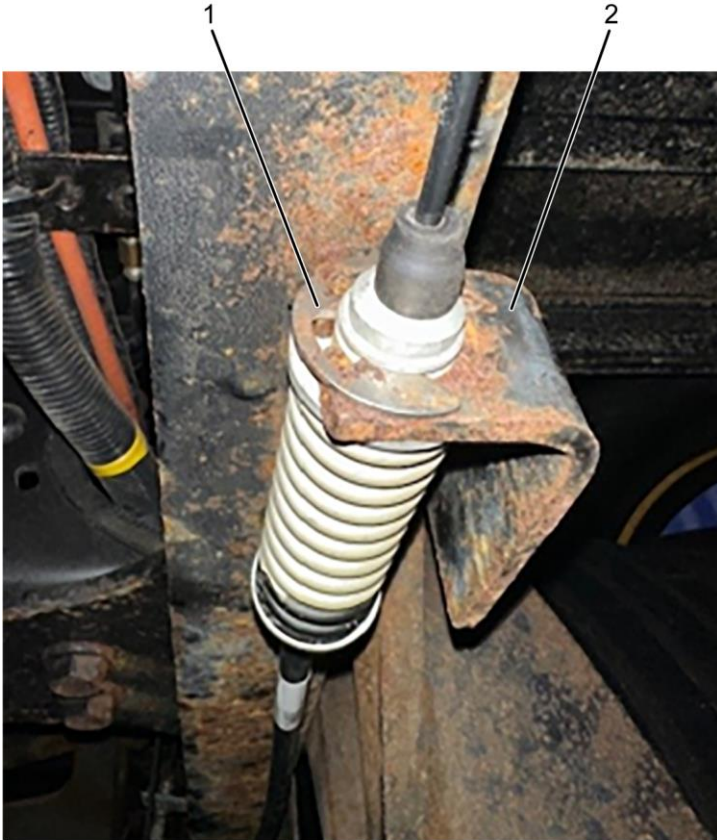
1. Cable connector
  2. Turnbuckle
9. Using two adjustable wrenches, secure cable connector (Figure 2, Item 1) at junction clip and rotate turnbuckle (Figure 2, Item 2).



**Figure 3. Rear Parking Cable – Frame Rail**

1. P-clamp (3)
2. Cable

10. Remove lower retainers from P-clamps (Figure 3, Item 1). Separate lower half of each clamp to allow enough clearance for the cable (Figure 3, Item 2) to be removed. Save fasteners for reuse.



0000491544

**Figure 4. Rear Cable Reaction**

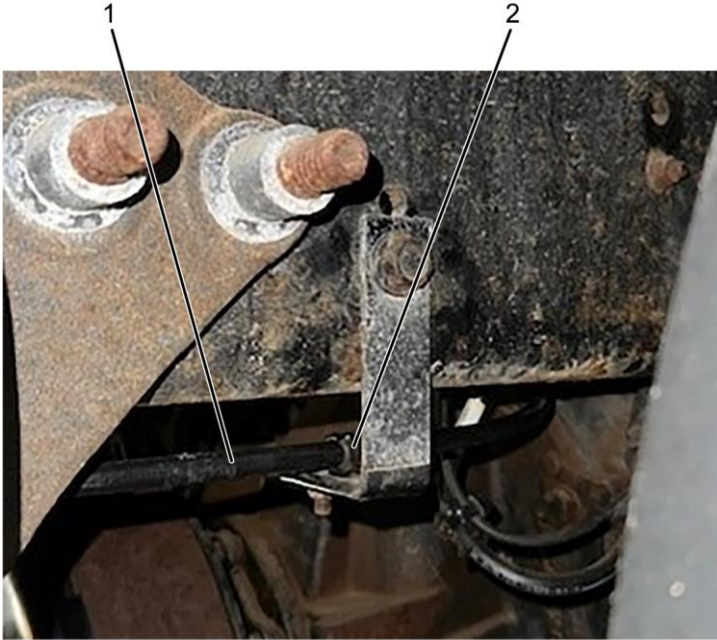
1. E-clip
2. Reaction bracket

11. Remove E-clip (Figure 4, Item 1) from reaction bracket (Figure 4, Item 2).
12. Remove rear cable from reaction bracket (Figure 4, Item 2) by pushing rearward.

---

**VEHICLE RECALL 25511**

© 2025 IC Bus, LLC. All rights reserved.  
All marks are trademarks of their respective owners.



0000491545

**Figure 5. Rear Brake Cable Bracket – Lower**

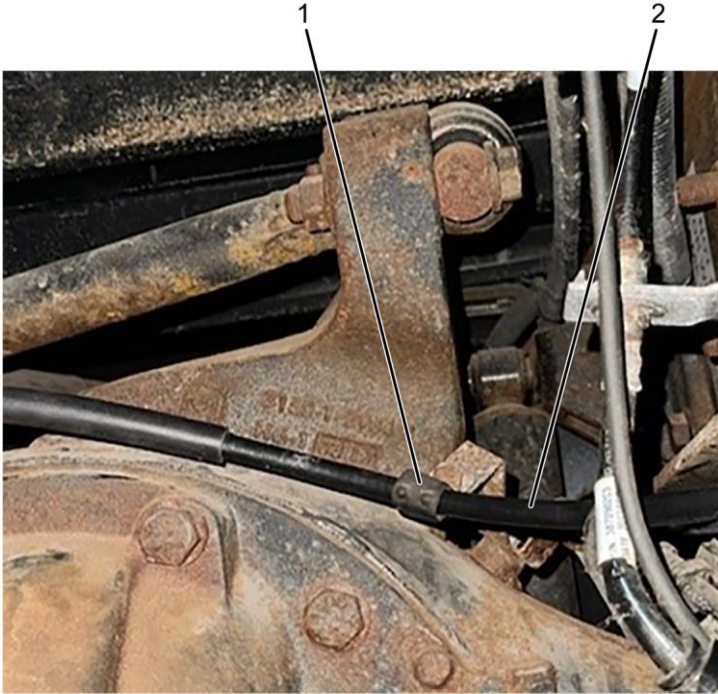
1. Rear cable
2. P-clamp

13. Remove lower retainer from P-clamp (Figure 5, Item 2) securing rear cable (Figure 5, Item 1). Save fasteners for reuse.

---

**VEHICLE RECALL 25511**

© 2025 IC Bus, LLC. All rights reserved.  
All marks are trademarks of their respective owners.



0000491546

**Figure 6. Rear Brake Cable Bracket – Upper**

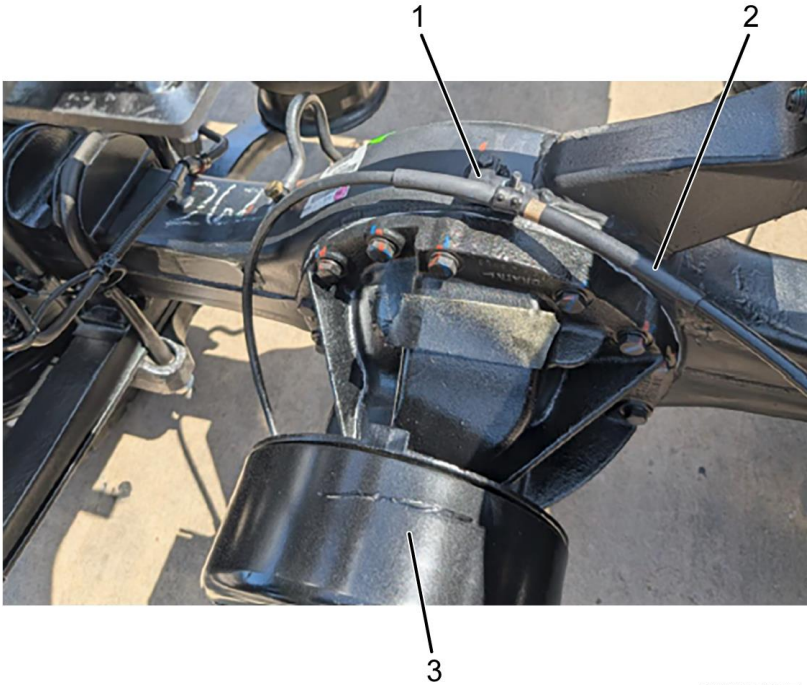
1. P-clamp
2. Rear cable

14. Remove upper retainer from P-clamp (Figure 6, Item 1) securing rear cable (Figure 6, Item 2). Save fasteners for reuse.

---

**VEHICLE RECALL 25511**

© 2025 IC Bus, LLC. All rights reserved.  
All marks are trademarks of their respective owners.



0000491547

**Figure 7. Parking Cable – Parking Brake at Rear Axle**

1. P-clamp
2. Rear cable
3. Parking brake drum cover

15. Take note of rear clipping point of parking brake cable at rear axle.

16. Remove retainer from P-clamp (Figure 7, Item 1) securing rear cable (Figure 7, Item 2) located above rear axle. Save fasteners for reuse.

---

**VEHICLE RECALL 25511**

© 2025 IC Bus, LLC. All rights reserved.  
All marks are trademarks of their respective owners.

**NOTE: 4DRGVMMP6SB505509 will require removal of driveshaft to access to the parking brake drum.**

17. For VIN 4DRGVMMP6SB505509, disconnect driveshaft from rear axle.



0000491548

**Figure 8. Parking Brake Drum Cover**

1. Parking brake drum cover
2. M10 bolt (8)

**NOTE: If parking brake drum cover is stuck / seized, use hammer to loosen drum from rear brake shoes.**

18. Remove eight M10 bolts (Figure 8, Item 2) from parking brake drum cover (Figure 8, Item 1).

---

**VEHICLE RECALL 25511**

© 2025 IC Bus, LLC. All rights reserved.  
All marks are trademarks of their respective owners.



0000491549

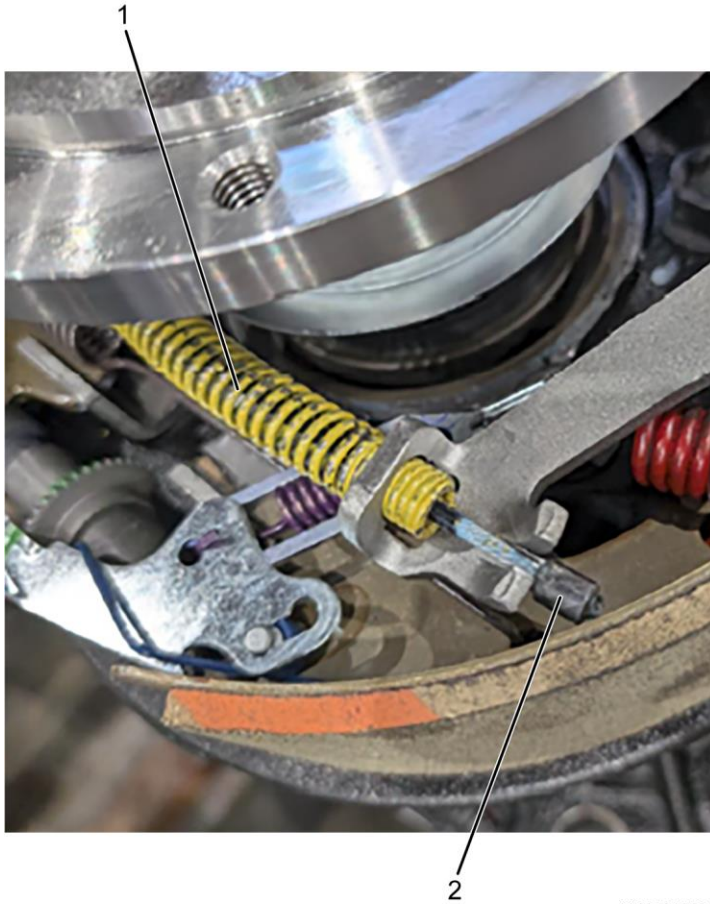
**Figure 9. Parking Brake Drum Cover Removal**

1. Driveshaft
  2. Parking brake drum cover
19. Separate parking brake drum cover (Figure 9, Item 2). Let brake drum rest on driveshaft (Figure 9, Item 1).

---

**VEHICLE RECALL 25511**

© 2025 IC Bus, LLC. All rights reserved.  
All marks are trademarks of their respective owners.



0000491550

**Figure 10. Parking Brake Cable at Brake Shoes**

1. Yellow spring
  2. Rear parking brake cable
20. Unclip and remove rear parking brake cable (Figure 10, Item 2) by passing through YELLOW spring (Figure 10, Item 1).
  21. Remove entire rear parking brake cable (Figure 10, Item 2) from vehicle. Discard parking brake cable.
  22. Referring to Figure 10, install new rear parking brake cable (Figure 10, Item 2) through YELLOW spring (Figure 10, Item 1).
  23. Install rear parking brake drum cover and tighten eight M10 bolts to 42 lb-ft (56 N·m).
  24. For VIN 4DRGVMMMP6SB505509, install rear driveshaft and tighten new U-joint strap bolts to 52 lb-ft (70 N·m).

---

**VEHICLE RECALL 25511**

© 2025 IC Bus, LLC. All rights reserved.  
All marks are trademarks of their respective owners.

25. Position new cable at reaction bracket and install E-clip.
26. Using previously recorded clipping points, route new parking brake cable through existing P-clamp located on the side of frame rail.
27. Using lower retainers previously removed, tighten P-clamp securely.
28. Install rear cable turnbuckle to front cable.
29. Using crowfoot wrench and torque wrench, tighten jam nut to 15–20 lb-ft (20–27 N·m).
30. Adjust parking brake shoe. Refer to appropriate Service / Technician manual for procedure.
31. Adjust parking brake cable tension. Refer to appropriate Service / Technician manual for procedure.
32. For Battery Electric Vehicle (BEV), turn 12V and high-voltage disconnect switches to ON position.
33. Remove wheel chocks.

## **END OF SERVICE PROCEDURE**

### **LABOR INFORMATION**

<b>Operation Number</b>	<b>Description</b>	<b>Time</b>
A40-25511-1	Remove, Replace and Adjust Parking Brake Cable	1.2 hrs

**Table 3** Labor Information

### **CAMPAIGN IDENTIFICATION LABEL**

Each vehicle corrected in accordance with this campaign must be marked with a CTS-1075 Campaign Identification Label.

Complete the label and attach on a clean surface next to the vehicle identification number (VIN) plate.

**DO NOT REMOVE**

**INTERNATIONAL**

Campaign No. \_\_\_\_\_

VIN \_\_\_\_\_

Eng.# \_\_\_\_\_

**COMPLETED**

Service Location Code # \_\_\_\_\_

**DO NOT REMOVE**

---

#### **VEHICLE RECALL 25511**

© 2025 IC Bus, LLC. All rights reserved.  
All marks are trademarks of their respective owners.

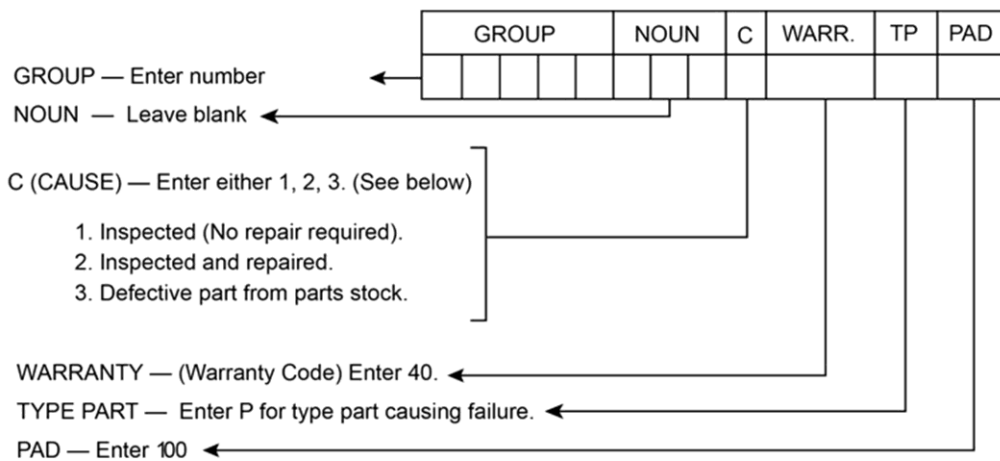
## ADMINISTRATIVE / DEALER RESPONSIBILITIES

### WARRANTY CLAIMS

Warranty claim expense is to be charged to Warranty. Claims are to be submitted in the normal manner, making reference to Safety Recall 25511.

Section 7 of the Warranty Policy and Procedures Manual contains further information related to the submission and processing of AFC / Recall claims.

As with all claim submissions, items acquired locally must be submitted in the "Other Charges" tab. The cost of any bulk items (such as a bag of cable tie straps, roll of wire, barrel of oil, or tube of silicone) should be prorated for the cost of the individual pieces / amount used during each repair.



000047910

### UNITED STATES AND POSSESSIONS

The National Traffic and Motor Vehicle Safety Act, as amended, provides that each vehicle that is subject to a vehicle recall campaign must be adequately repaired within a reasonable time after the owner has tendered it for repair. A failure to adequately repair within 60 days after a tender of a vehicle is prima facie evidence of failure to repair within a reasonable time. If the condition is not adequately repaired within 60 days, the owner may be entitled to replacement with an identical or reasonable equivalent vehicle at no charge, or to a refund of the purchase price less a reasonable allowance for depreciation.

Dealers must correct all vehicles subject to this campaign at no charge to the owner, regardless of mileage, age of vehicle, or ownership, from this time forward.

---

#### VEHICLE RECALL 25511

© 2025 IC Bus, LLC. All rights reserved.  
All marks are trademarks of their respective owners.

Dealers should proceed immediately to make necessary correction to units in inventory. Federal law prohibits a dealer from delivering under a sale or lease, a new motor vehicle or any new or used item of motor vehicle equipment (including a tire) covered by the notification of a recall until the defect or noncompliance is remedied.

Dealers must make every effort to promptly schedule an appointment with each owner to repair his or her vehicle as soon as possible. However, consistent with the customer notification, dealers are expected to complete the repairs on the mutually agreed upon service date.

Dealers involved in the recall process will be furnished a listing of owner names and addresses to enable them to follow up with owners and have the vehicles corrected. Use of this listing must be limited to this campaign because the list may contain information obtained from state motor vehicle registration records, and the use of such motor vehicle registration data for purposes other than this campaign is a violation of law in several states.

## **CANADA**

Dealers must correct all vehicles subject to this campaign at no charge to the owner, regardless of mileage, age of vehicle, or ownership, from this time forward.

Dealers should proceed immediately to make necessary correction to units in inventory. All inventory vehicles subject to this recall campaign must be corrected prior to sale, transfer or delivery. If vehicles have been sold or transferred and you are in receipt of Customer Notification Letters and Authorization for Recall Service cards for those vehicles, the transfer location or customer must be notified immediately from your dealer location.

Dealers must make every effort to promptly schedule an appointment with each owner to repair his or her vehicle as soon as possible. However, consistent with the customer notification, dealers are expected to complete the repairs on the mutually agreed upon service date.

Dealers involved in the recall process will be furnished a listing of owner names and addresses to enable them to follow up with owners and have the vehicles corrected. Use of this listing must be limited to this campaign because the list may contain information obtained from state motor vehicle registration records, and the use of such motor vehicle registration data for purposes other than this campaign is a violation of law in several states.

## **EXPORT**

---

### **VEHICLE RECALL 25511**

© 2025 IC Bus, LLC. All rights reserved.  
All marks are trademarks of their respective owners.

Export Distributors should proceed immediately to make necessary correction to units in inventory. All inventory vehicles subject to this recall campaign must be corrected prior to sale, transfer or delivery. If vehicles have been sold or transferred and you are in receipt of Customer Notification Letters and Authorization for Recall Service cards for those vehicles, the transfer location or customer must be notified immediately from your distributor location.

Export Distributors are to submit warranty claims in the usual manner making reference to this recall number.

Export Distributors are expected to provide full cooperation and follow-up with respect to this important subject matter. If you have any questions or need further assistance, please contact the Regional Service Manager at your regional office.

## **IC Bus, LLC**