

Recall Campaign Bulletin



Mercedes-Benz

September 2025

TO: ALL MERCEDES-BENZ CENTERS

CAMPAIGN NO.	2025090005
CAMPAIGN DESC.	25P8291906
NHTSA ID	25V511
SUBJECT	Check and Replace Headlamps
MODEL(S)	GLA (247 platform)
MODEL YEAR(S)	2024
CAMPAIGN POPULATION	136

Campaign Technical Instructions

Prior to performing this Campaign:

Check the Vehicle Master Inquiry (VMI) to verify this campaign applies to the specific vehicle.

Always check for other open campaigns and perform them accordingly!

Review the entire campaign bulletin first, and perform the procedures exactly as described.

Order No. P-RC-2025090005

Recall Campaign Bulletin

Recall Campaign Bulletin

Recall Campaign Bulletin

Recall Campaign Bulletin

Recall Campaign Bulletin

Primary Parts Information

Qty.	Part Name	Part Number
1 (as required)	Left lamp unit	A 247 906 51 04
1 (as required)	Right lamp unit	A 247 906 52 04

i Small parts such as screws, lock nuts, sealing rings, cable ties, fluids, sealant, etc. are not listed in the parts list. The required small parts are taken into account in the budgeting.

Additional Repair Information

Operation Step	Document Number
Work Procedure	AR82.10-P-4733MFA
Adjustment of headlamps	AP82.10-P-8260AO

Check/Test Procedure

1. Check left and right front lamp unit for presence of adjustment dots in cover.

i The adjustment dots look like a small round circle (**Figure 1, A**).

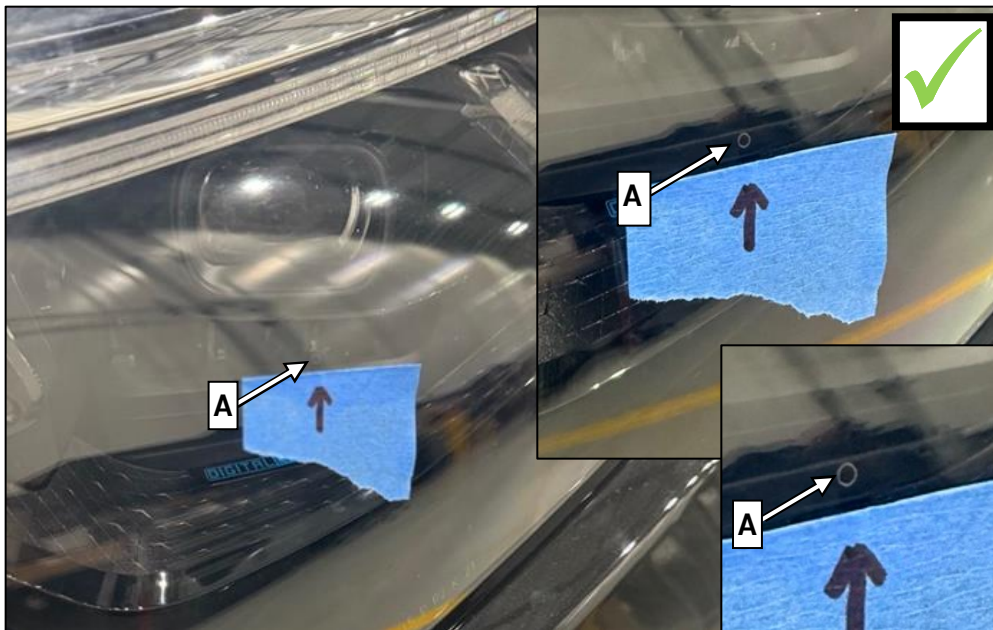



Figure 1 (shown on left lamp unit)

- a. Adjustment dot is **present** on both lamp units: **End measure.**
- b. Adjustment dot is **not present** on one or both lamp units: Perform **Work Procedure.**


Model(s): 247

Work Procedure


1. Replace affected front lamp unit

 For repair information, see **AR82.10-P-4733MFA**.

Warranty Information

 **Note:** The following allowable labor operation should be used when submitting a warranty claim for this repair:

Damage Code	Operation Number	Description	Labor Time (hrs.)
82 919 06	11-1530	Check left and right front lamp unit Includes: Check headlamps for presence of adjustment dots in lens cover	0.1
	11-1531	Replace left front lamp unit (after check) Includes: Commissioning, adjustment of lamp units	1.3
	11-1532	Replace right front lamp unit (after check) Includes: Commissioning, adjustment of lamp units	1.3
	11-1533	Replace left and right front lamp unit (after check) Includes: Commissioning, adjustment of lamp units	1.4

 **Note:** Always check Xentry Operation Time (XOT) for the current OP-Code times. Labor times are subject to change and updates may not be reflected in this document.