

Recall Repair Instructions

NHTSA Recall # 25V-481

Tiffin Motorhomes Recall # TIF-145

Models involved: 2025 GH1 Motorhomes, standard models without a smart shunt

Purpose: To reconfigure the secondary alternator so that it only charges the house batteries when the engine is operating at or above 1200 RPM.

FLAT RATE CODE & TIME ALLOWED: *When filing the warranty claim for payment, please use the following flat rate code. **9888RC01, 2 hours.** No authorization is required for work completed at the flat rate times stated on the work instructions.* Use "TIF-145" as the authorization on claim for payment of labor and needed shop supplies.

NOTE: Mercedes-Benz PSM must be updated by an authorized Mercedes-Benz dealer or service provider.

Tools Needed:

- Impact Drill
- Phillips Head Bit
- E12 Socket
- Torque Wrench (capable of 35ft*lbs)
- Fiberglass Cable Rod (or substitute)
- Android OS device. (Phone or Tablet) w/ Wakespeed App installed
- USB-B to USB-C cable.

Parts Needed:

- 5177529 Communication Cable (PSM to Wakespeed)
- 5178005 Wakespeed Terminator



5178005



5177529

Repair Instructions:

1. Disconnect the chassis battery at the battery disconnect. Remove the access panel next to the accelerator pedal (see Figure 1A). Push in the red tab shown in Figure 1B and then pull to disconnect (some models may have a black tab). **NOTE:** This step is critical to prevent any unintentional short circuits or electrical damage while removing the driver's seat or working on electronic components.



Figure 1A



Figure 1B

- Remove the driver's seat by using an E12 socket to unbolt and remove the driver's seat to access the modules located beneath the seat.
- Remove Mercedes Valeo Module shown in figure 2 by pulling up on the front edge while pressing the locking clip forward. Set the module aside to access the PSM below it.

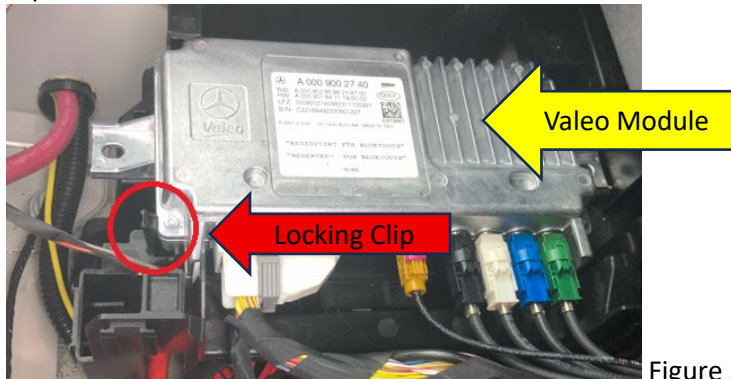


Figure 2

- Remove the PSM shown in Figure 3A, which is also secured with snap-in clips and remove the PSM to access the connector pins, shown in figure 3B.

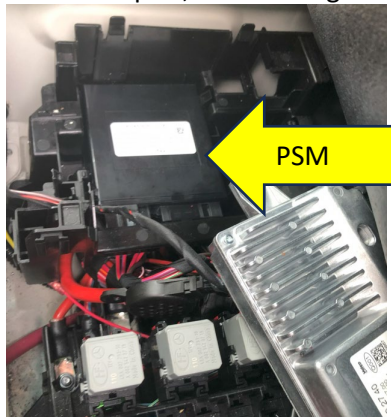


Figure 3A

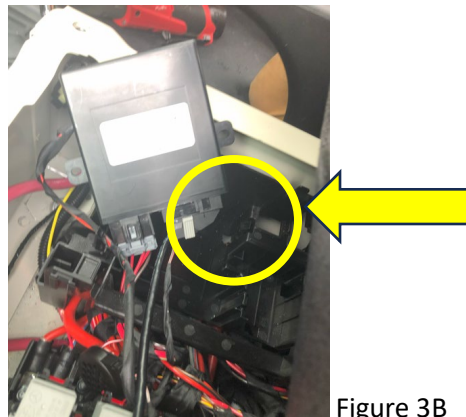


Figure 3B

- Disconnect the wiring harness, shown in figure 3B & 4A from the PSM. Insert wires from the communication cable, part 5177529 as shown. Figure 4B, Pin 16, connect to white with brown stripe CAN wire from Wakespeed or RJ45 Pin 2. Figure 4C, Pin 32, connect to brown CAN wire from Wakespeed or RJ45 Pin 1.

⚠ Confirm secure and correct placement; improper connection can lead to system malfunction.

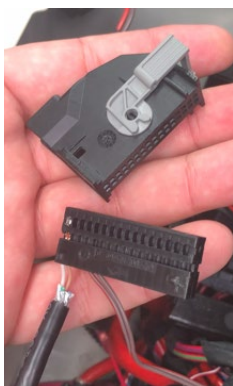


Figure 4A

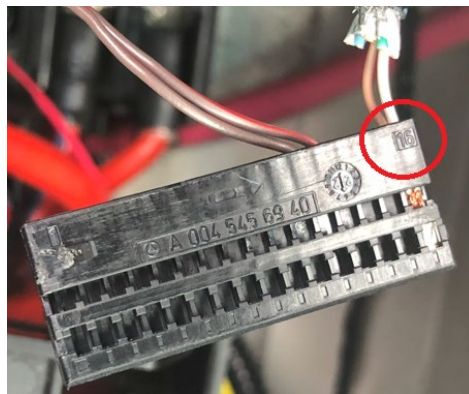


Figure 4B, Pin #16

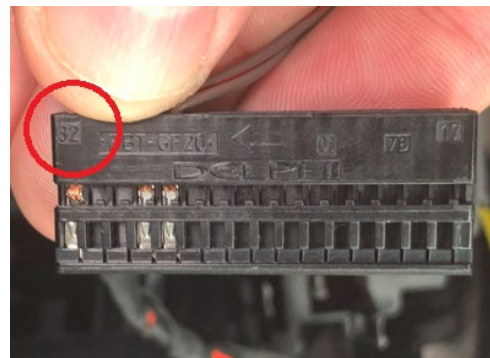


Figure 4C, Pin #32

- Route the communication cable, part 5177529, from the PSM under the driver's seat, along the B-pillar, under the foot pedestal of the jump seats or Adventure bar, under the shower, to the Wakespeed.

- Remove the floor trim shown in Figure 5A and fold up the padding behind the driver's seat, shown in Figure 5B, as needed to route wire. If the Adventure Bar is included in the unit, drill a hole behind the foot pedestal, as shown in Figure 5C. If needed, the foot pedestal may be removed by removing the screws from the metal trim shown in 5D.



Figure 5A



Figure 5B

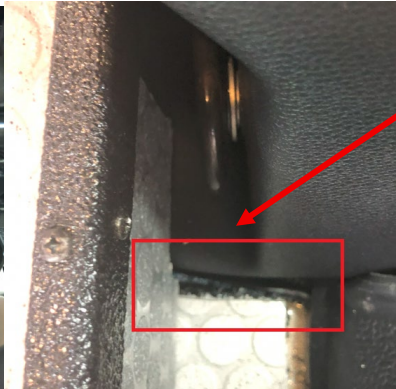


Figure 5C



Figure 5D

- Remove screws from the shower access panel, shown in Figure 6, to gain access to the underside of the shower to route cable. NOTE: shower bottom is fiberglass, gloves may be needed while routing cable.

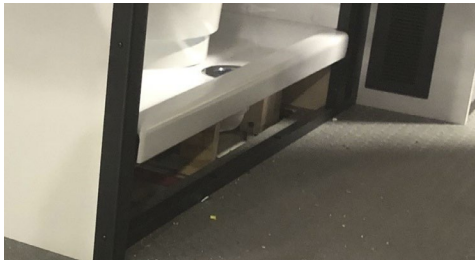


Figure 6

- Remove the access panel shown in figure 7 by removing the 4 plastic thumb screws to access the Wakespeed regulator.



Figure 7

- Plug the crossover cable into top CANbus port and terminator into bottom CANbus port as shown in Figure 8.

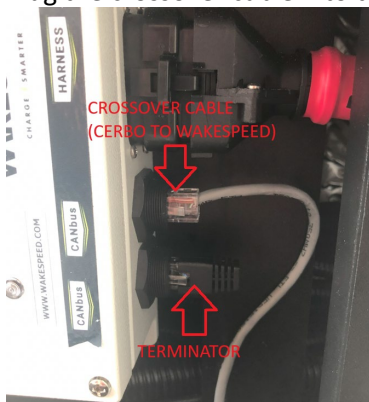


Figure 8

- Remove the Phillips head screws located on the Wakespeed regulator and remove the top cover to expose the internal circuit board, figure 9A. Insert the corresponding plug of the USB-B to USB-C cable into the socket located on the circuit board of the Wakespeed controller (see Figure 9B) and plug the corresponding plug of the same cord into the socket at the bottom of the Android enabled device (charging port).

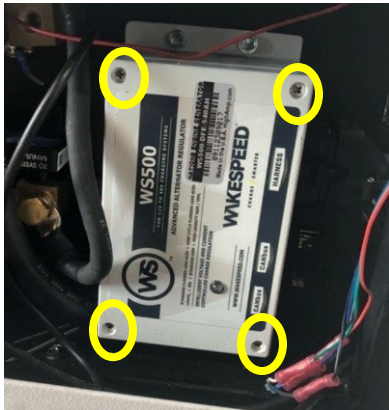


Figure 9A



Figure 9B

- Open Wakespeed app on the android device. If it's not installed yet, install the Wakespeed app (see Figure 10) on the device by searching for it in the Google Play store and selecting install.

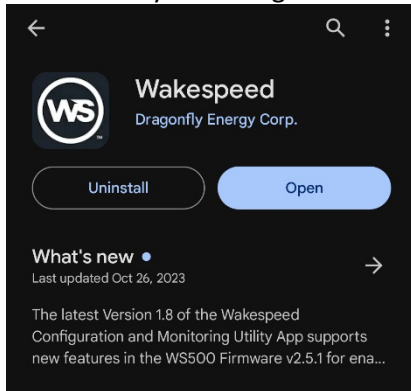


Figure 10

- Input the settings shown below in Figures 11A, 11B, 11C, 11D, 11E, 11F & 11G.

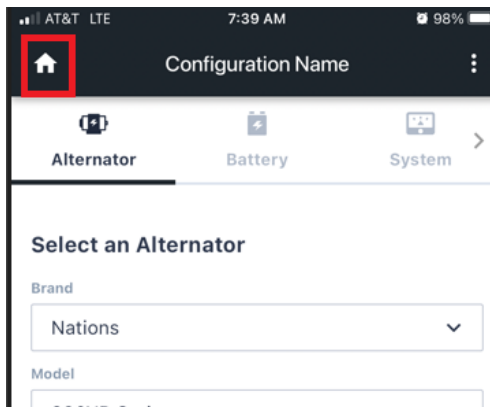


Figure 11A – Select Home button

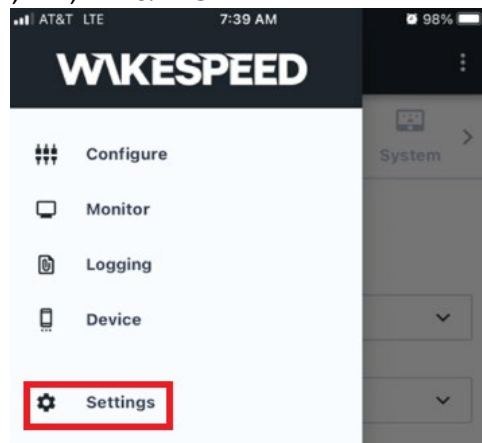


Figure 11B – Select Settings

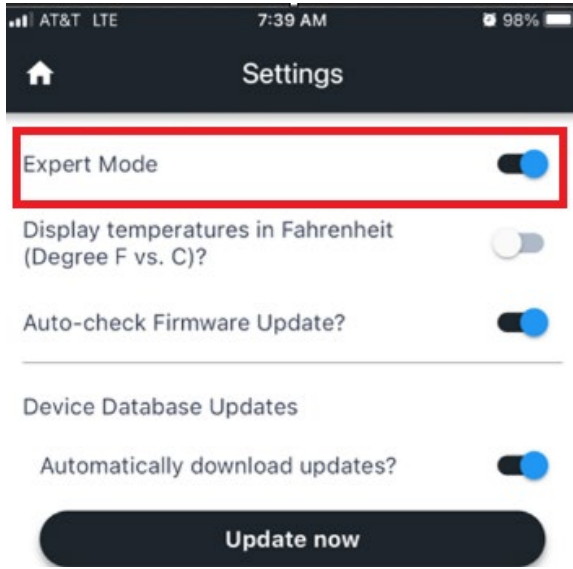


Figure 11C – Turn on ‘Expert Mode’

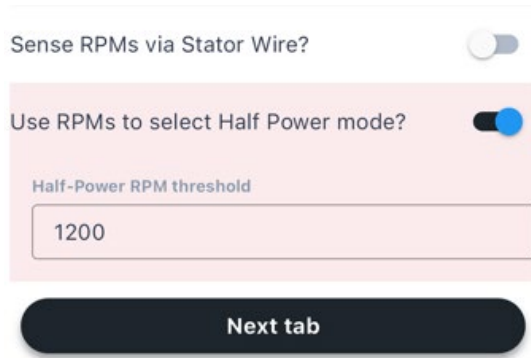


Figure 11D - Toggle OFF “Sense RPMs via Stator Wire”
 Leave ON “Use RPMs to select Half Power Mode”
 Ensure threshold remains at 1200 RPMs

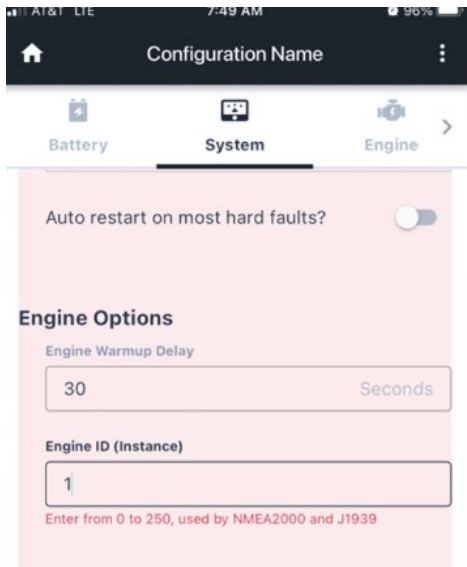


Figure 11E – Navigate to System Tab
 Engine Options – set Engine ID to 1

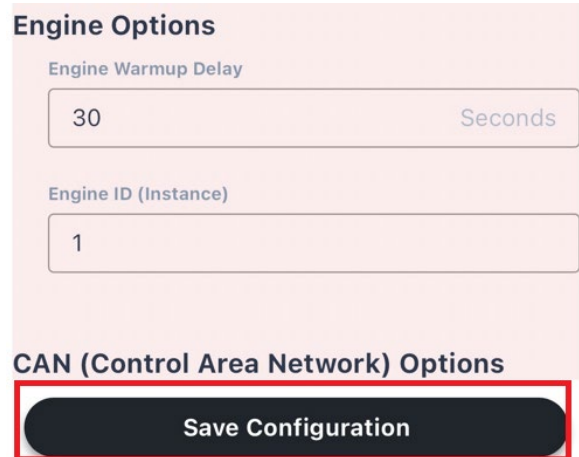


Figure 11F –Once complete, select “Save Configuration”

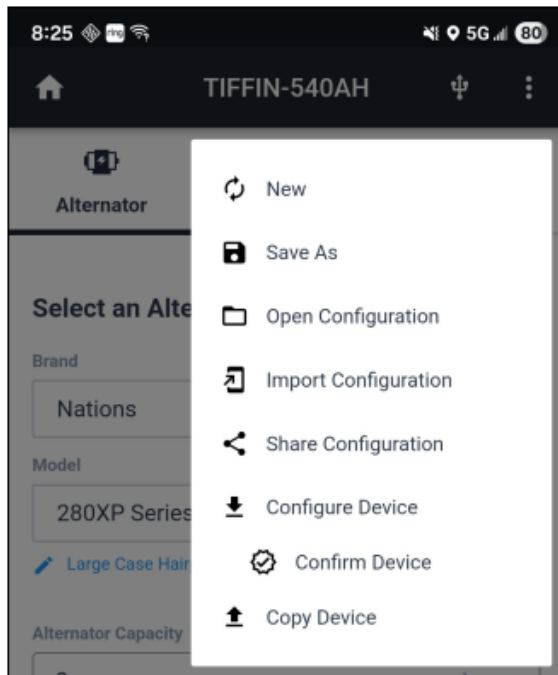


Figure 11G – Select “three dot” drop down menu.
 Select “Configure Device” and allow progress bar to finalize to 100%
 Select Confirm device.

14. Reassemble all removed components. Secure PSM and Valeo Module in the correct location under driver’s seat and reinstall driver’s seat torquing mounting bolts to approximately 35 ft-lbs. Reinstall any removed trim and access panels, being careful not to overtighten or strip the fasteners. Reconnect chassis battery cable and reinstall access panel.

NOTE: steps 15 & 16 must be completed at a Mercedes Benz Authorized Service Center

15. Install the update to the PSM. The update file is available for download from Tiffin Motorhomes https://www.dropbox.com/scl/fi/fqbkgzwm95ts0r92k1zoz/PSM907_PSMTIFFINNEW.CDS?rlkey=j55miqsnqgjszw_xws1dp2hibw&st=5kfb1s45&dl=0
16. Clear engine codes related to the removing and reinstalling of the driver’s seat.
17. To ensure the update is functioning as intended, follow the below steps.
 - A. Connect USB-B to USB-C wire to WakeSpeed Regulator and Android device.
 - B. Access WakeSpeed app on Android device while connected to regulator.
 - C. In the upper left corner of the app, access the menu marked with an image of a house.
 - D. Select “Monitor” from the list of options.
 - E. Scroll to the bottom of the “Monitor” screen where the “Utilization” bar is located.
 - F. Start the engine and ensure that “Utilization” remains at zero.
 - G. Rev the engine until the RPMs exceed 1200.
 - H. Ensure that the “Utilization” begins to rise.
 - I. Reduce the RPMs to Idle and ensure that “Utilization” returns to zero.
 - J. Disconnect the cable and reinstall the top of the WakeSpeed Regulator.
 - K. Reinstall decorative vent located on plastic cover.