



# VOLUNTARY RECALL CAMPAIGN

Classification: EM25-004C	Reference: NTB25-034C	Date: November 20, 2025
------------------------------	--------------------------	----------------------------

## VOLUNTARY SAFETY RECALL CAMPAIGN 2019-2020 ALTIMA; VCR ENGINE INSPECTION

This bulletin has been amended. See AMENDMENT HISTORY on the last page.  
Please discard previous versions of this bulletin.

**CAMPAIGN ID #:** R25B1  
**APPLIED VEHICLES:** 2019-2020 Altima (L34)  
**APPLIED ENGINES:** KR20DDET only

**Check Service COMM or Dealer Business Systems (DBS)  
National Service History to confirm campaign eligibility.**

### INTRODUCTION

Nissan is conducting this voluntary safety recall campaign on certain specific model year 2019-2020 Altima vehicles equipped with the KR20DDET engine to inspect, and if necessary, replace the engine. This service will be performed at no charge to the customer for parts or labor.

### IDENTIFICATION NUMBER

Nissan has assigned identification number R25B1 to this campaign. This number must appear on all communication and documentation of any nature dealing with this campaign.

### DEALER RESPONSIBILITY

It is the dealer's responsibility to check Service COMM or Dealer Business Systems (DBS) National Service History for the campaign status on each vehicle falling within the range of this voluntary safety recall which for any reason enters the service department. This includes vehicles purchased from private parties or presented by transient (tourist) owners and vehicles in a dealer's inventory. **Federal law requires that new vehicles in dealer inventory which are the subject of a safety recall must be corrected prior to sale. Failure to do so can result in civil penalties by the National Highway Traffic Safety Administration.** While federal law applies only to new vehicles, Nissan strongly encourages dealers to correct any used vehicles in their inventory before they are retailed.

Bulletins are intended for use by qualified technicians, not 'do-it-yourselfers'. Qualified technicians are properly trained individuals who have the equipment, tools, safety instruction, and know-how to do a job properly and safely. **NOTE:** If you believe that a described condition may apply to a particular vehicle, DO NOT assume that it does. See your Nissan dealer to determine if this applies to your vehicle.

**IMPORTANT:**

**Attention California Dealers**

An Emission Recall Campaign Completion (ERCC) label must be filled out by the technician performing the repair, and then attached to the underside of the vehicle hood. A sample of the label is shown in Figure 1.

<p align="center"><b>Technician to fill in the following:</b></p> <p>“Reprogrammed ECM and Inspected Engine OK per Campaign ID # R25B1”  <b>OR</b>          “Reprogrammed ECM and Replaced Engine per Campaign ID R25B1”</p>	<table border="1" style="width: 100%;"> <tr> <td align="center" colspan="2"><b>NISSAN MOTOR CORPORATION</b></td> </tr> <tr> <td align="center" colspan="2"><b>AUTHORIZED MODIFICATIONS</b></td> </tr> <tr> <td align="center" colspan="2">THE FOLLOWING MODIFICATIONS HAVE BEEN MADE:</td> </tr> <tr> <td colspan="2" style="height: 20px;"> </td> </tr> <tr> <td align="center" colspan="2">THESE MODIFICATIONS HAVE BEEN APPROVED AS APPROPRIATE BY EPA AND CARB</td> </tr> <tr> <td>DEALER CODE:</td> <td>DATE:</td> </tr> <tr> <td colspan="2">CHANGE AUTHORITY:</td> </tr> </table>	<b>NISSAN MOTOR CORPORATION</b>		<b>AUTHORIZED MODIFICATIONS</b>		THE FOLLOWING MODIFICATIONS HAVE BEEN MADE:				THESE MODIFICATIONS HAVE BEEN APPROVED AS APPROPRIATE BY EPA AND CARB		DEALER CODE:	DATE:	CHANGE AUTHORITY:	
<b>NISSAN MOTOR CORPORATION</b>															
<b>AUTHORIZED MODIFICATIONS</b>															
THE FOLLOWING MODIFICATIONS HAVE BEEN MADE:															
THESE MODIFICATIONS HAVE BEEN APPROVED AS APPROPRIATE BY EPA AND CARB															
DEALER CODE:	DATE:														
CHANGE AUTHORITY:															
<p align="center"><b>Also fill in the following:</b></p> <p>“DEALER CODE” and “DATE”          Put “ARB/EPA” under “CHANGE AUTHORITY”</p>															

Figure 1

California law prohibits owners from renewing their California registration if emissions related recall work has not been performed. California dealers are now required to issue a proof of correction certificate to vehicle owners upon completion of emissions related recall work. Please fill out one of the campaign completion forms for each owner that has this campaign performed. Instruct owners to keep this certificate unless they are requested to mail it to the DMV. A sample of the form is shown in Figure 2.

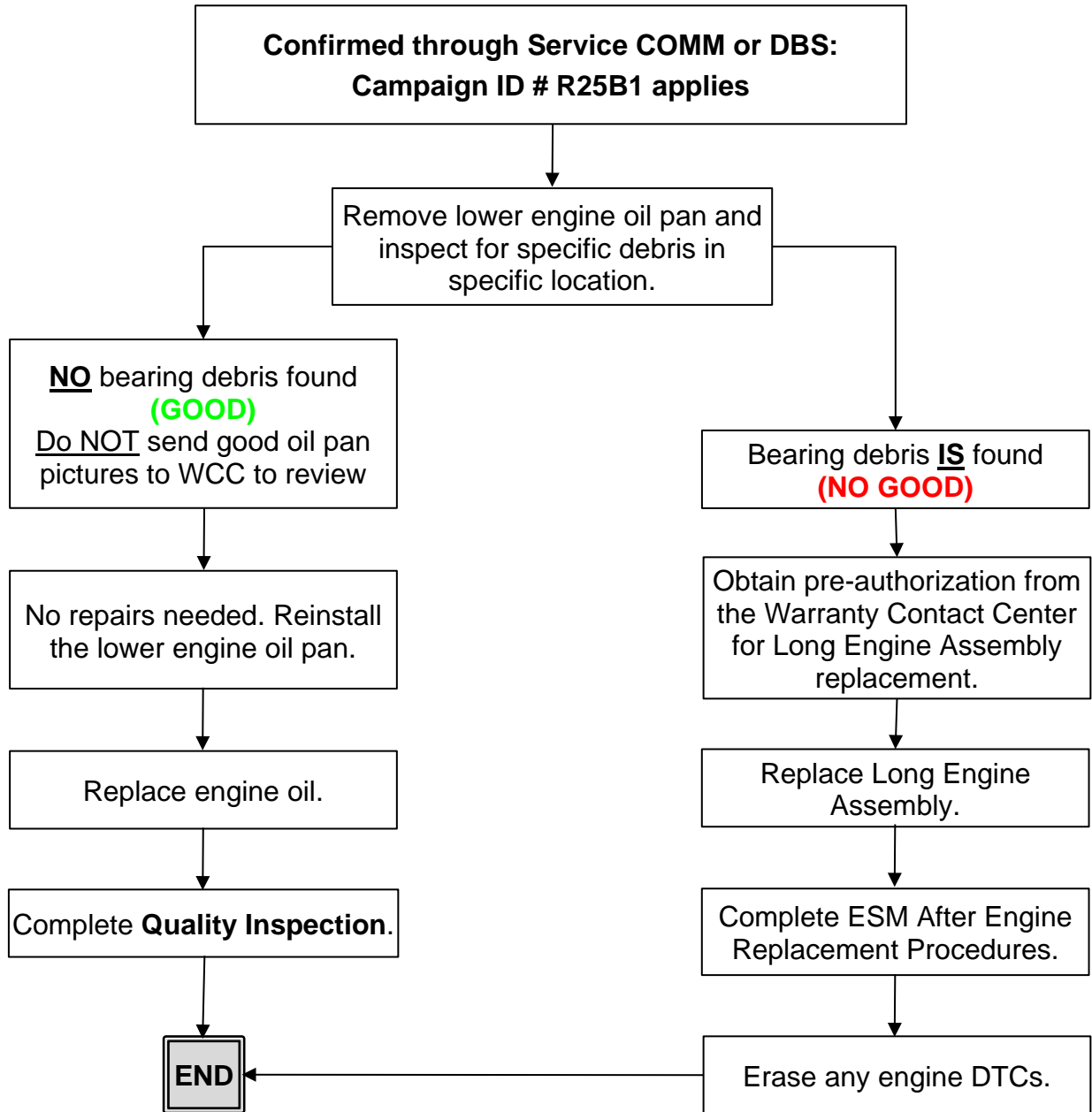
Vehicle Emission Recall - Proof of Correction				
License Number	Make	Model Year	Body Type	Vehicle Identification Number
				<input type="text"/> <input type="text"/> <input type="text"/> <input type="text"/> <input type="text"/> <input type="text"/> <input type="text"/> <input type="text"/> <input type="text"/> <input type="text"/> <input type="text"/> <input type="text"/> <input type="text"/> <input type="text"/> <input type="text"/> <input type="text"/> <input type="text"/> <input type="text"/> <input type="text"/> <input type="text"/>
Manufacturer _____			Recall Number _____	
The above described vehicle has been repaired, modified and/or equipped with new emission control devices to meet applicable California Emission Control Laws.				
Dealer's Name _____		Address, City, State, Zip _____		
Date _____		Dealership's Authorized Signature _____		
		<b>X</b>		
Return this certificate to DMV <u>only</u> when required - otherwise retain for your records.				
CAEMRC 1-20				

Figure 2

**HINT:**

- These forms (item number CAEMRC 1-20) and labels (item number NIS-UHL-16) are available from Nissan Publications through NNAnet at no charge.
- When either item (form or label) is ordered, you will automatically receive the other item as well.

## REPAIR OVERVIEW



## REQUIRED SPECIAL TOOL(S)

New or replacement Essential Tools are available from Tech•Mate online: [www.techmatetools.com](http://www.techmatetools.com), or by phone: 1-833-397-3493.

When ordering, keep in mind that the tool part number prefix has changed from “J” to “NI”. For example, J-37228 is now NI-37228.

### Sealer Cutter Tool (NI-37228)

- Each dealer has been previously shipped one Sealer Cutter Tool (NI-37228).

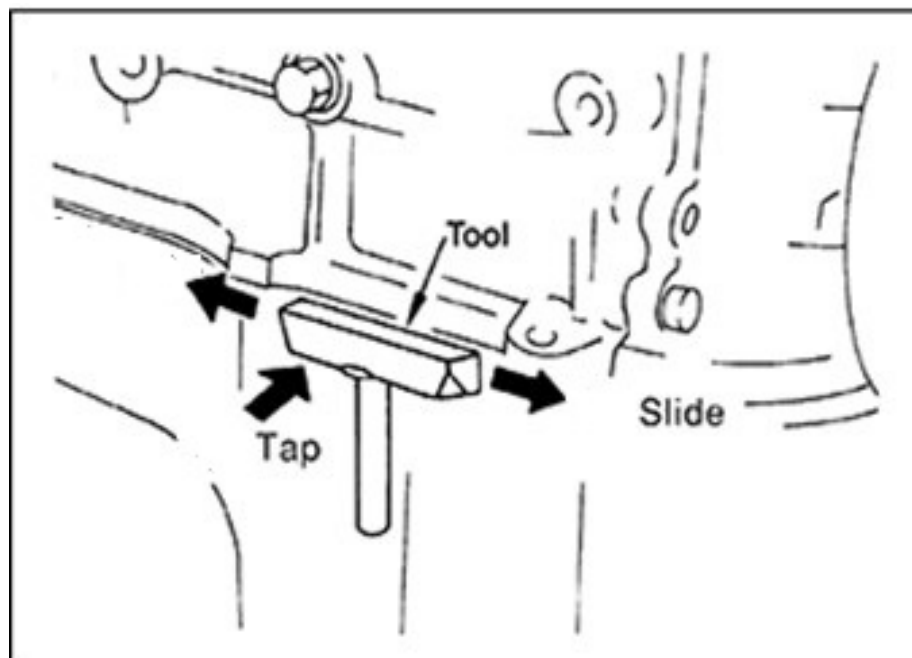


Figure 3

## SERVICE PROCEDURE

### Lower Engine Oil Pan Removal

1. Place the vehicle on a suitable lift and raise it up.
2. Drain the engine oil into a suitable container.
  - **Do NOT remove the engine oil filter.**

3. Remove the lower engine oil pan using the following steps:
  - a. Loosen the lower engine oil pan bolts in the reverse order of the sequence shown (loosen #13 first, followed by the remaining bolts in reverse order).
  - b. Remove the 13 bolts from the lower engine oil pan.

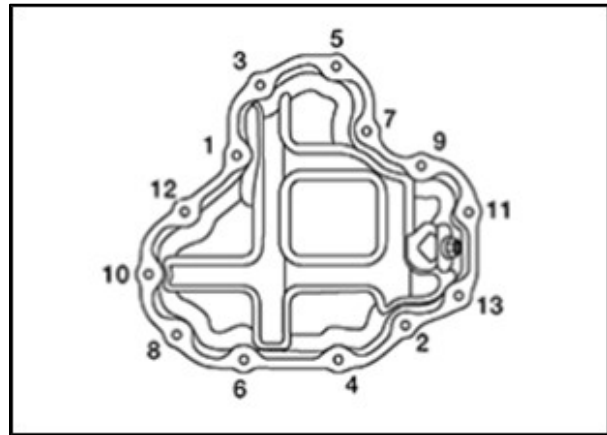


Figure 4

- c. Separate the lower engine oil pan from the upper engine oil pan using Sealer Cutter (NI-37228).

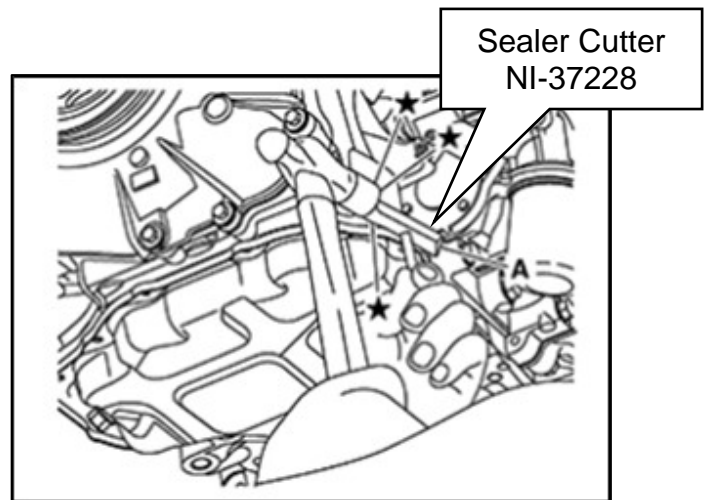


Figure 5

#### **NOTICE**

To avoid damage to the vehicle, do NOT separate the lower engine oil pan using a screwdriver. Tap the Sealer Cutter in, and then tap it on the side as shown to break the seal without damaging the mating surface.

4. Pour the residual engine oil out of the oil pan for debris inspection.

**HINT:** Pour out enough engine oil so any debris in the oil pan is easily visually identified.

## Lower Engine Oil Pan Inspection

5. Inspect the lower engine oil pan for accumulated metallic copper-colored bearing debris and compare to the examples in Figure 6 through Figure 10 (pages 6 to 8). Bearing material will appear as sparkly fine copper-colored debris accumulated in recessed areas of the oil pan.
6. Is the lower engine oil pan clean with either no debris or only slight metallic debris, similar to what is shown in Figure 6 through Figure 10?

**IMPORTANT:** Do not clean debris from the oil pan.

**YES:** The lower engine oil pan has no debris or only slight metallic debris (**GOOD**) similar to what is shown in Figure 6 through Figure 10 (pages 6 to 8). Continue to step 7 on page 11.

**NO:** The lower engine oil pan has accumulated metallic copper-colored bearing debris (**NO GOOD**) similar to what is shown in Figure 11, Figure 12 and Figure 13 (page 9 and 10). Skip to step 10 on page 12.

**IMPORTANT:** For **NO GOOD** inspection results, do not reseal the oil pan to the engine. Only reinstall the oil pan with the oil pan bolts for engine parts return.



Figure 6

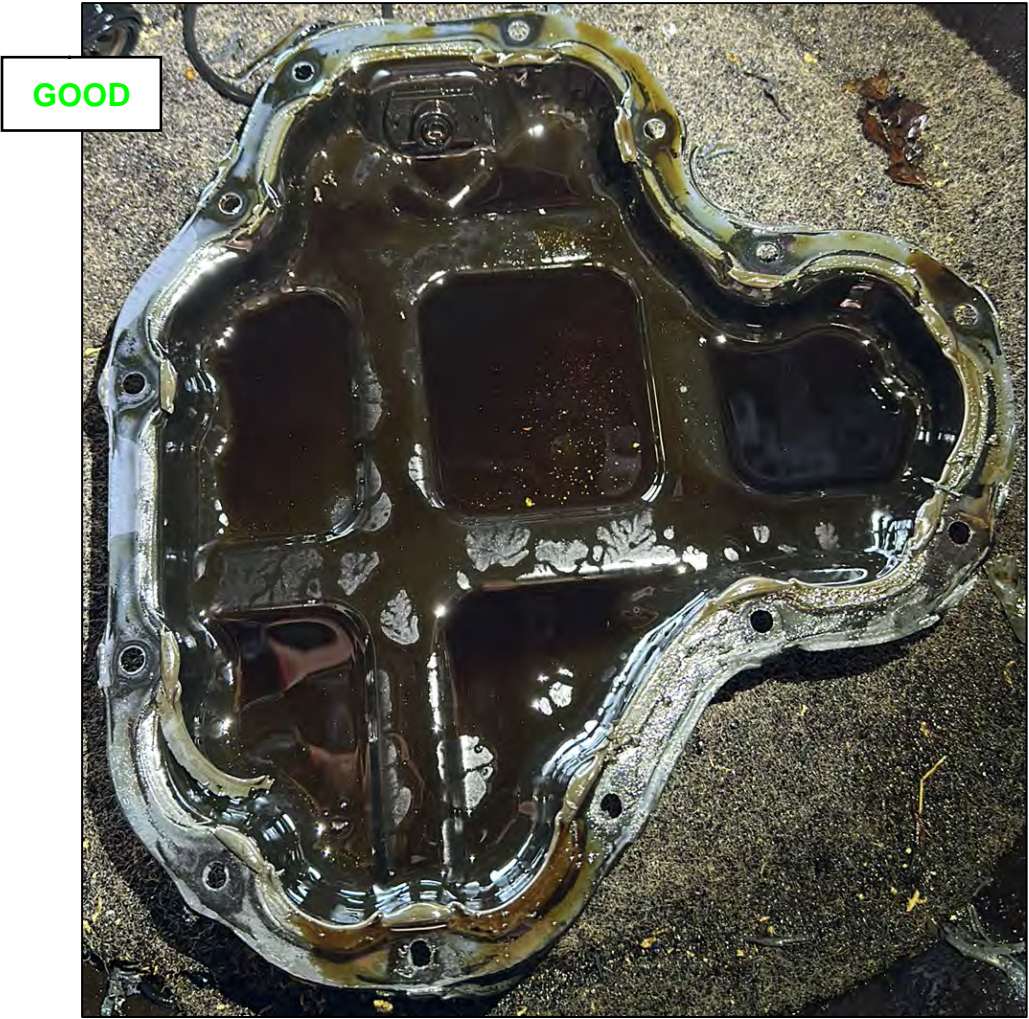


Figure 7



Figure 8

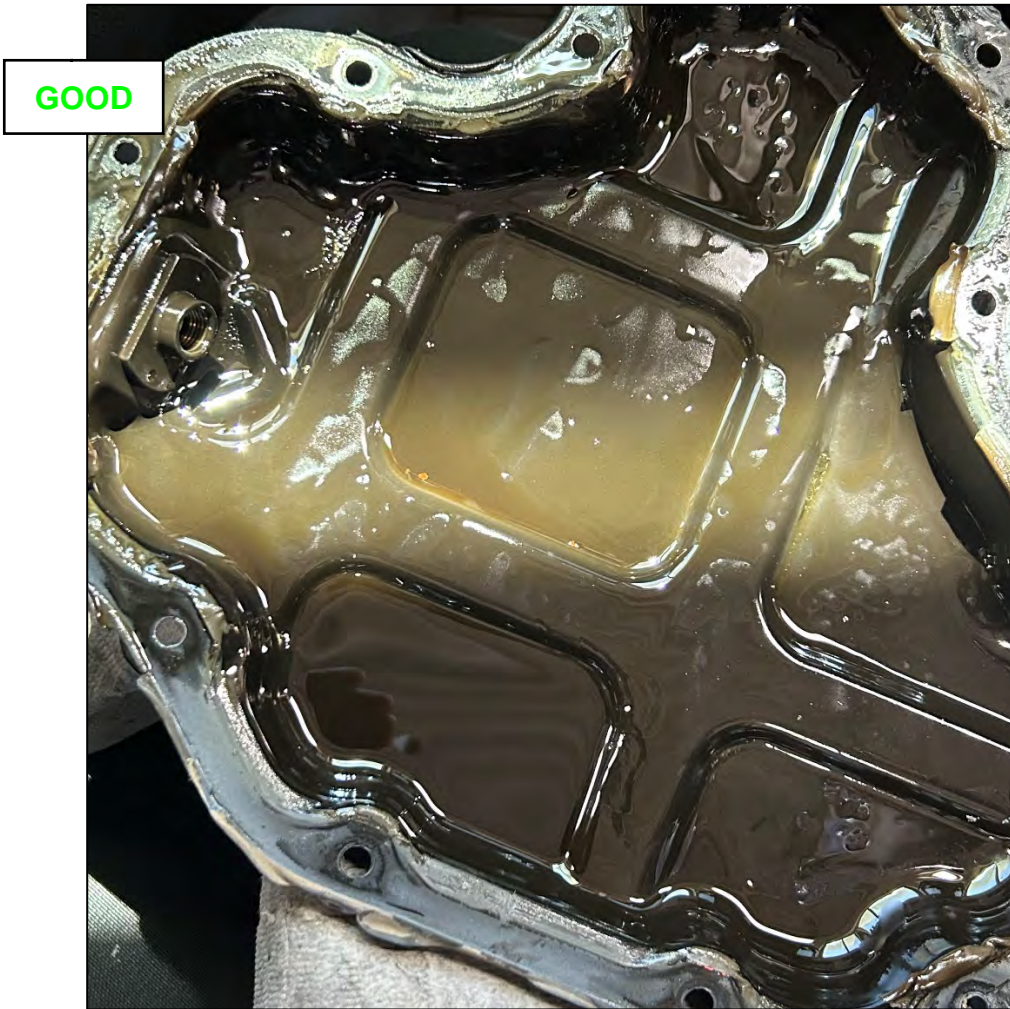


Figure 9

**HINT:** Gray RTV sealant debris migration is normal during oil pan removal (Figure 10). Do NOT replace the engine assembly for RTV debris. Remove the RTV sealant during normal oil pan cleaning.



Figure 10

- Figure 11 and 10 below, and Figure 13 on page 10 are examples of a **NO GOOD** condition.

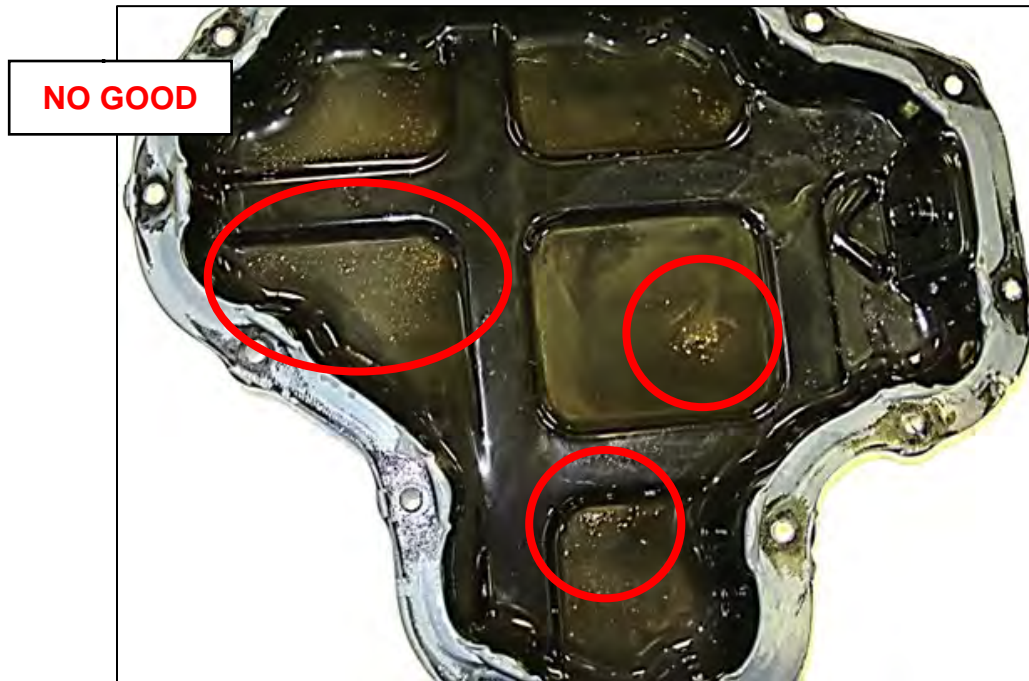


Figure 11

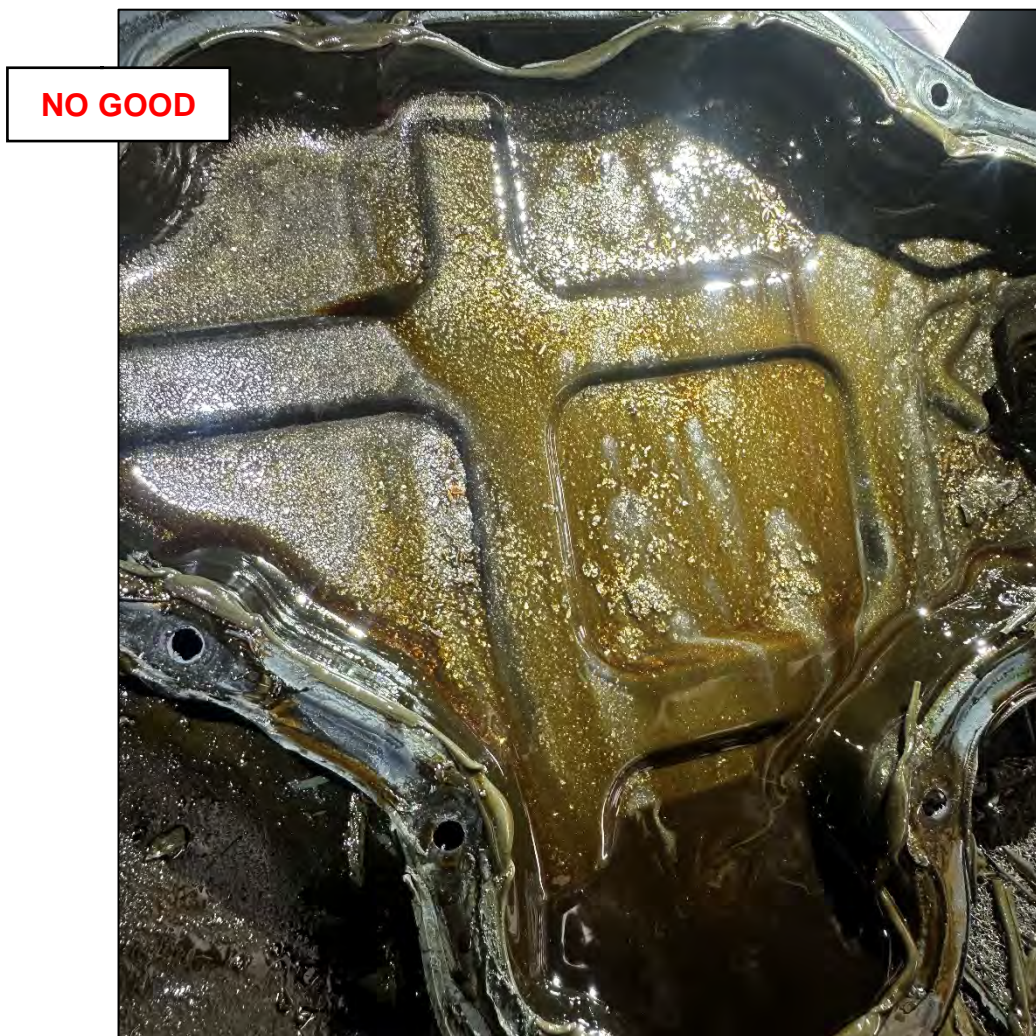


Figure 12

**NO GOOD**



Figure 13

## Lower Engine Oil Pan Installation

### **CAUTION**

To avoid minor or moderate injury and/or damage to the vehicle:

- Be careful not to damage the mating surface between the lower engine oil pan and the engine.
  - Do not pick the sealing area forcibly with a screwdriver as the factory default liquid gasket has better adhesion than the conventional one.
  - Do not scratch or damage the mating surface when cleaning off old liquid gasket.
  - Install components within 5 minutes of liquid gasket application.
  - Do not retighten lower engine oil pan bolts after 5 minutes have elapsed.
  - Allow 30 minutes for the liquid gasket to set before adding oil to the engine.
  - Do not reuse the drain plug washer.
7. If the lower engine oil pan inspection was **GOOD condition**, similar to what is shown in Figure 6 through Figure 10 (pages 6 to 8) reinstall the lower engine oil pan and fill with **NEW engine oil**.

**HINT:** If **GOOD condition**, then there is no need to send a case to WCC for pre-authorization.

- Refer to the **ESM: ENGINE > ENGINE MECHANICAL > KR20DDET > REMOVAL AND INSTALLATION > OIL PAN (LOWER) > OIL PAN (LOWER): Removal & Installation**
- Torque the lower engine oil pan bolts to specification using the sequence in Figure 14.
  - Oil pan (lower) bolt torque: 10.1 N•m (1.0 kg-m, **7 ft-lb**)

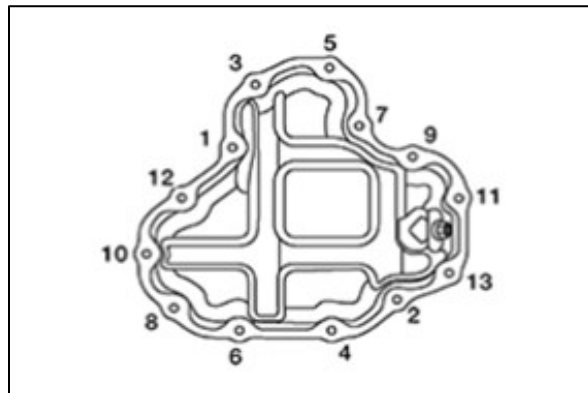


Figure 14

### Quality Inspection

8. Inspect the following after lower engine oil pan installation:
- Check the engine oil level and adjust the oil level as required.
  - Start the engine and verify there are no engine oil leaks.
  - Stop the engine and wait 10 minutes.
  - Check the engine oil level again and adjust the oil level as required.
9. Inspection is complete, no further repairs required. Refer to **CLAIMS INFORMATION** on the last page and submit a claim for Inspection Only.

## Engine Replacement

10. If the lower engine oil pan inspection was **NO GOOD condition**, similar to what is shown in Figure 11, Figure 12 and Figure 13 (page 9 and 10), replace the long engine assembly (replace using normal campaign/warranty guidelines and preauthorization by Warranty Contact Center IS REQUIRED).
  - Refer to the ESM: **ENGINE > ENGINE MECHANICAL > KR20DDET > REMOVAL AND INSTALLATION > ENGINE ASSEMBLY > ENGINE ASSEMBLY: Unit Removal & Installation**
  - Refer to **Campaign Related Information When Replacing Long Engine Assembly** for claim approval.

### **⚠CAUTION**

To avoid minor or moderate injury and/or damage to the vehicle:

- Follow all Cautions, Warnings and Notes published in the Electronic Service Manual (ESM).
- Torque all fasteners per ESM exploded views.

## Campaign Related Information When Replacing Long Engine Assembly

11. Record a short, continuous video that includes the following:
  - Bottom of lower engine oil pan clearly showing the debris.
  - Bottom of engine.
  - The Vehicle Identification Number (VIN) on the F.M.V.S.S. certification label (VIN label).
  - Ensure the continuous video has a clear image of the incident area(s) of the lower engine oil pan debris and the VIN on the VIN label.
12. Take **clear** pictures of the following:
  - One (1) picture of the complete oil pan.
    - Hold the oil pan at a 30-degree angle to reduce overhead light glare.
    - Fill camera image entirely with the complete oil pan; avoid excessive background
  - Two (2) or more close-up pictures of the debris.
    - Hold the oil pan at a 30-degree angle to reduce overhead light glare.

### **HINT:**

- Turn the camera flash off.
- Make sure the picture is taken in an area with adequate light.
- Make sure excessive engine oil is not in the pan obscuring the debris.

### **IMPORTANT:**

- Blurry or unclear pictures will not be accepted.
- Failure to submit the information from Steps 11 and 12 will result in further requests for additional information.
- All information and clear pictures are required to obtain WCC determination.

13. Fill in the fields on the Warranty Contact Center Forms (Figure 15).

- While completing the Warranty Contact Center Form:
  - Select “Campaign” coverage type
  - Select “Campaign” diagnosis
  - Enter the Campaign Number

Warranty Call Center Precall

Warranty Contact Center Forms

Warranty Contact Center Pre-authorization Start Screen

\*Dealer Code

NNANet Username

\*17 Digit VIN

\* Pre-authorization Form

- Start Harness Case
- Update Harness Case
- Glass Warranty
- Paint Warranty
- CM PM6R3, PM6B4, or PM964
- LEAF Form
- Altima HEV Form
- Ariya HV Battery Form
- LEAF Repair Complete
- ARC Dealer Authorization
- CVT Form
- 12V Battery
- Engine
- Update Case

Before proceeding, reference the following bulletins for details and specific instructions relating to information required for the pre-call form.

**Nissan**

NTB14-032 Electrical Harness Repair Information

NTB09-081 Windshield Cracking

NTB17-019 Window Glass Warranty Information

NTB13-028 Removing Foreign Material from Window Glass

NTB17-055\_2002 - 2006 SENTRA: FRONT PASSENGER AIR BAG INFLATOR

See Parts and Service Bulletin for White Paint Delamination Warranty Extension

**Infiniti**

ITB14-020 Electrical Harness Repair Information

ITB09-039 Windshield Cracking

ITB17-009 Window Glass Warranty Information

ITB13-007 Removing Foreign Material from Window Glass

See Parts and Service Bulletin for White Paint Delamination Warranty Extension

Please click the link below to start a chat.

[Chat with Support](#)

Next

Figure 15

- Attach the video and pictures to the Warranty Contact Center Forms.
  - After submitting the Pre-authorization Warranty Contact Center Forms with the required video and photos (see steps 11 and 12 on page 12), the Warranty Contact Center will respond via E-mail with a decision regarding replacement of the long engine assembly.

## After Engine Replacement Procedures

14. Perform all of the following procedures after engine replacement, per the ESM:

- Check wheel alignment.
  - Refer to the ESM: **SUSPENSION > FRONT SUSPENSION > PERIODIC MAINTENANCE > WHEEL ALIGNMENT > WHEEL ALIGNMENT: Inspection**
- Adjust Neutral position of steering angle sensor.
  - Refer to the ESM: **BRAKES > BRAKE CONTROL SYSTEM > VDC/TCS/ABS > BASIC INSPECTION > BRAKE CONTROL SYSTEM > ADJUSTMENT OF STEERING ANGLE SENSOR NEUTRAL POSITION > Work Procedure**
- Perform electric intake valve timing control actuator position learning.
  - Refer to the ESM: **ENGINE > ENGINE CONTROL SYSTEM > KR20DDET > BASIC INSPECTION > ELECTRIC IVT CONTROL ACTUATOR POSITION LEARNING > Work Procedure**
- Perform valve timing offset data clear.
  - Refer to the ESM: **ENGINE > ENGINE CONTROL SYSTEM > KR20DDET > BASIC INSPECTION > VALVE TIMING OFFSET DATA CLEAR > Work Procedure**
- Perform valve timing offset data writing.
  - Refer to the ESM: **ENGINE > ENGINE CONTROL SYSTEM > KR20DDET > BASIC INSPECTION > VALVE TIMING OFFSET DATA WRITING > Work Procedure**
- Perform idle air volume learning.
  - Refer to the ESM: **ENGINE > ENGINE CONTROL SYSTEM > KR20DDET > BASIC INSPECTION > IDLE AIR VOLUME LEARNING > Work Procedure**
- Perform engine oil data reset.
  - Refer to the ESM: **ENGINE > ENGINE CONTROL SYSTEM > KR20DDET > BASIC INSPECTION > ENGINE OIL DATA RESET > Work Procedure**
- Perform A/F initial learning.
  - Refer to the ESM: **ENGINE > ENGINE CONTROL SYSTEM > KR20DDET > BASIC INSPECTION > AIR FUEL RATIO INITIAL LEARNING > Work Procedure**
- Check CVT fluid level.
  - Refer to the ESM: **TRANSMISSION & DRIVELINE > TRANSAXLE AND TRANSMISSION > CVT: REF0F10H > Periodic Maintenance > CVT FLUID > Adjustment**

## Erase DTCs

- Using CONSULT III plus, erase any “engine” diagnostic trouble codes that may have set during the repair.

## PARTS INFORMATION (Inspection Only)

DESCRIPTION	PART NUMBER	QUANTITY
WASHER – DRAIN PLUG	11026-JA00A	1
THREEBOND 1217H GASKET	999MP1217HP	1 (1)
ESTER ENG OIL 5W30 (GL4)  <b>OR</b>  Equivalent MOBIL 1 5W30 (API SN)	999MP5W30EP (quart bottle)  <b>OR</b>  999PK05W30M1 (quart bottle), 999BK5W30M1Q (bulk quart), 999DK5W30M1Q (drum quart)	5 (1)

- Order this item through the Nissan Maintenance Advantage program: Phone 877-NIS-NMA1 (877-647-6621). Website order via link on the dealer portal; [www.NNAnet.com](http://www.NNAnet.com) and click on the “Maintenance Advantage-Tire/Battery/Chemical” link.

## CLAIMS INFORMATION

Submit a “CM” line claim using the following claims coding:

CAMPAIGN (“CM”) ID	DESCRIPTION	OP CODE	FRT
R25B1	Inspect Engine Oil Pan (Lower) GOOD CONDITION	R25B10	0.7

## AMENDMENT HISTORY

PUBLISHED DATE	REFERENCE	DESCRIPTION
July 14, 2025	NTB25-034	Original bulletin published
July 28, 2025	NTB25-034A	Changes throughout, <b>HINT</b> and Figure 6 added on page 6, <b>PARTS INFORMATION</b> updated
November 5, 2025	NTB25-034B	Changes throughout
November 20, 2025	NTB25-034C	Amended to add Emission Recall Campaign Completion (ERCC) label to page 2