



I N F I N I T I

VOLUNTARY RECALL CAMPAIGN

Classification: EM25-005B	Reference: ITB25-010B	Date: December 3, 2025
------------------------------	--------------------------	---------------------------

VOLUNTARY SAFETY RECALL CAMPAIGN 2019-2022 QX50 AND 2022 QX55; VCR ENGINE INSPECTION

This bulletin has been amended. See AMENDMENT HISTORY on the last page.
Please discard previous versions of this bulletin.

CAMPAIGN ID #: R25B2
APPLIED VEHICLES: 2019-2022 QX50 (J55)
 2022 QX55 (FJ55)

**Check Service COMM or Dealer Business Systems (DBS)
National Service History to confirm campaign eligibility.**

INTRODUCTION

Infiniti is conducting this voluntary safety recall campaign on certain specific model year 2019-2022 QX50 and 2022 QX55 vehicles equipped with the KR20DDET engine to inspect, and if necessary, replace the engine. This service will be performed at no charge to the client for parts or labor.

IDENTIFICATION NUMBER

Infiniti has assigned identification number R25B2 to this campaign. This number must appear on all communication and documentation of any nature dealing with this campaign.

RETAILER RESPONSIBILITY

It is the retailer's responsibility to check Service COMM or Dealer Business Systems (DBS) National Service History for the campaign status on each vehicle falling within the range of this voluntary safety recall which for any reason enters the service department. This includes vehicles purchased from private parties or presented by transient (tourist) clients and vehicles in a retailer's inventory. **Federal law requires that new vehicles in retailer inventory which are the subject of a safety recall must be corrected prior to sale. Failure to do so can result in civil penalties by the National Highway Traffic Safety Administration.** While federal law applies only to new vehicles, Infiniti strongly encourages retailers to correct any used vehicles in their inventory before they are retailed.

Bulletins are intended for use by qualified technicians, not 'do-it-yourselfers'. Qualified technicians are properly trained individuals who have the equipment, tools, safety instruction, and know-how to do a job properly and safely. **NOTE:** If you believe that a described condition may apply to a particular vehicle, DO NOT assume that it does. See your Infiniti retailer to determine if this applies to your vehicle.

IMPORTANT:

Attention California Dealers

An Emission Recall Campaign Completion (ERCC) label must be filled out by the technician performing the repair, and then attached to the underside of the vehicle hood. A sample of the label is shown in Figure 1.

<p>Technician to fill in the following:</p> <p>“Reprogrammed ECM and Inspected Engine OK per Campaign ID # R25B2”</p> <p>OR</p> <p>“Reprogrammed ECM and Replaced Engine per Campaign ID R25B2”</p>	<table border="1"><tr><td colspan="2">NISSAN MOTOR CORPORATION</td></tr><tr><td colspan="2">AUTHORIZED MODIFICATIONS</td></tr><tr><td colspan="2">THE FOLLOWING MODIFICATIONS HAVE BEEN MADE:</td></tr><tr><td colspan="2"> </td></tr><tr><td colspan="2">THESE MODIFICATIONS HAVE BEEN APPROVED AS APPROPRIATE BY EPA AND CARB</td></tr><tr><td>DEALER CODE:</td><td>DATE:</td></tr><tr><td colspan="2">CHANGE AUTHORITY:</td></tr></table>	NISSAN MOTOR CORPORATION		AUTHORIZED MODIFICATIONS		THE FOLLOWING MODIFICATIONS HAVE BEEN MADE:				THESE MODIFICATIONS HAVE BEEN APPROVED AS APPROPRIATE BY EPA AND CARB		DEALER CODE:	DATE:	CHANGE AUTHORITY:	
NISSAN MOTOR CORPORATION															
AUTHORIZED MODIFICATIONS															
THE FOLLOWING MODIFICATIONS HAVE BEEN MADE:															
THESE MODIFICATIONS HAVE BEEN APPROVED AS APPROPRIATE BY EPA AND CARB															
DEALER CODE:	DATE:														
CHANGE AUTHORITY:															
<p>Also fill in the following:</p> <p>“DEALER CODE” and “DATE”</p> <p>Put “ARB/EPA” under “CHANGE AUTHORITY”</p>															

Figure 1

California law prohibits owners from renewing their California registration if emissions related recall work has not been performed. California dealers are now required to issue a proof of correction certificate to vehicle owners upon completion of emissions related recall work. Please fill out one of the campaign completion forms for each owner that has this campaign performed. Instruct owners to keep this certificate unless they are requested to mail it to the DMV. A sample of the form is shown in Figure 2.

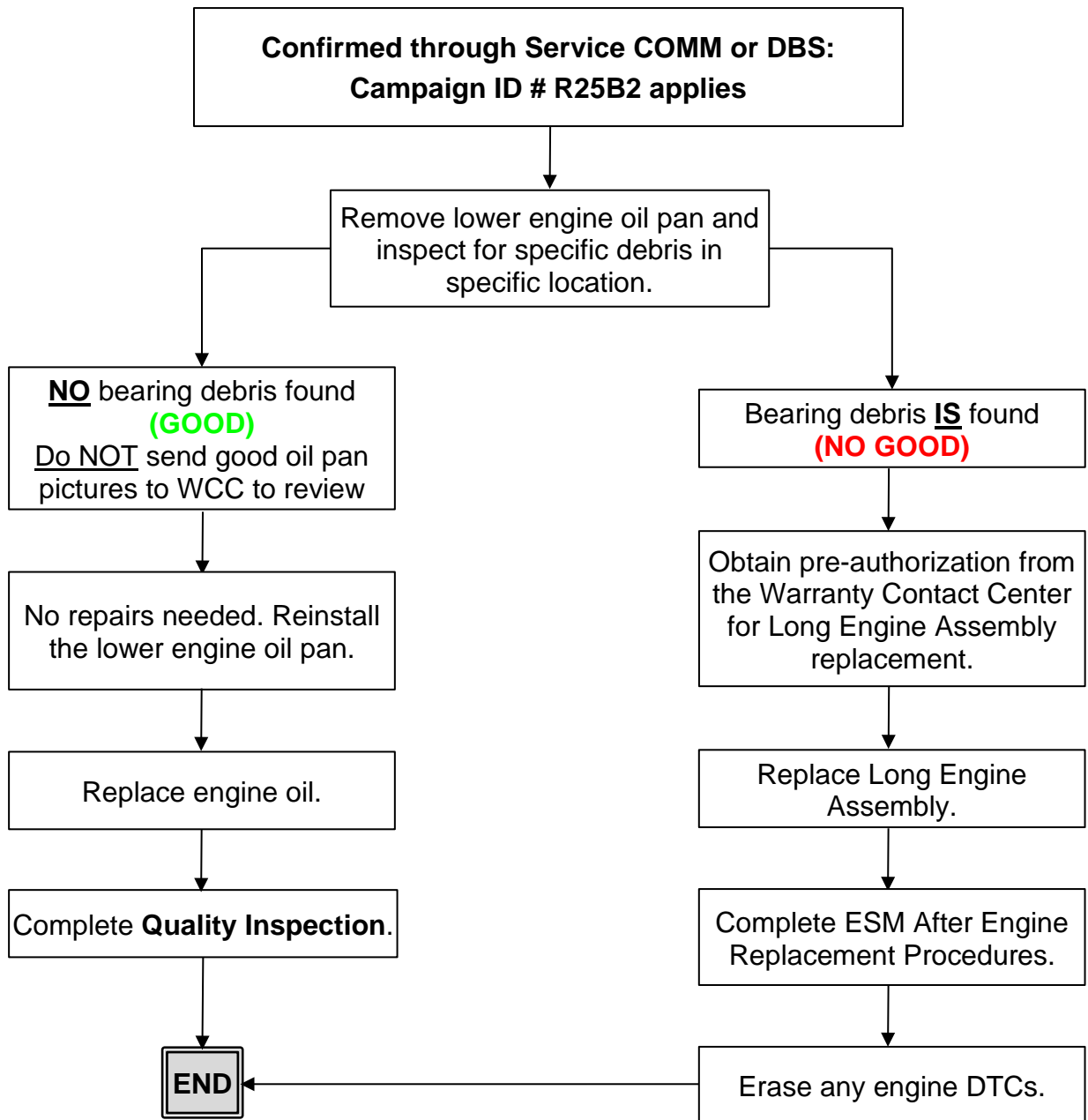
Vehicle Emission Recall - Proof of Correction				
License Number	Make	Model Year	Body Type	Vehicle Identification Number
				<input type="text"/>
Manufacturer _____		Recall Number _____		
The above described vehicle has been repaired, modified and/or equipped with new emission control devices to meet applicable California Emission Control Laws.				
Dealer's Name _____		Address, City, State, Zip _____		
Date _____	Dealership's Authorized Signature _____			
	X			
Return this certificate to DMV <u>only</u> when required - otherwise retain for your records.				
CAEMRC 1-20				

Figure 2

HINT:

- These forms (item number CAEMRC 1-20) and labels (item number NIS-UHL-16) are available from Nissan Publications through NNAnet at no charge.
- When either item (form or label) is ordered, you will automatically receive the other item as well.

REPAIR OVERVIEW



REQUIRED SPECIAL TOOL(S)

New or replacement Essential Tools are available from Tech•Mate online: techmatetools.com or by phone: 1-833-397-3493.

When ordering, keep in mind that the tool part number prefix has changed from “J” to “NI”. For example, **J**-37228 is now **NI**-37228.

Sealer Cutter Tool (NI-37228)

- Each dealer has been previously shipped one Sealer Cutter Tool (NI-37228).

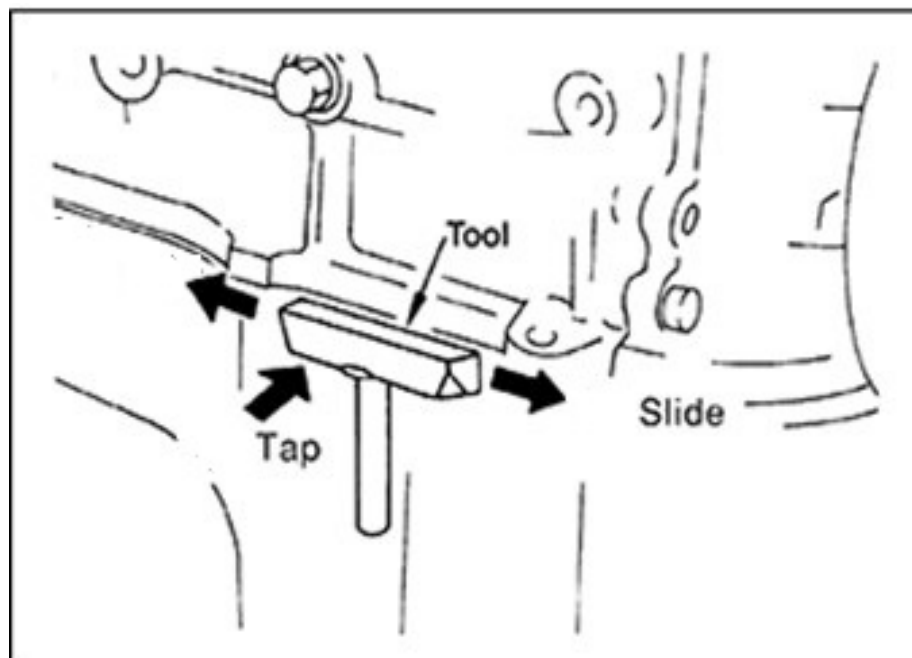


Figure 3

SERVICE PROCEDURE

Lower Engine Oil Pan Removal

1. Place the vehicle on a suitable lift and raise it up.
2. Remove the front under cover.
 - a. Remove the front under cover bolts and clips.
 - b. Remove the front under cover and set aside.

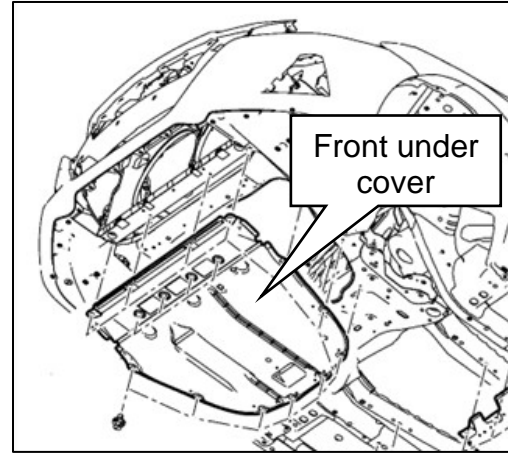


Figure 4

3. Drain the engine oil into a suitable container.
 - **Do NOT remove the engine oil filter.**

4. Remove the lower engine oil pan using the following steps:
 - a. Loosen the lower engine oil pan bolts in the reverse order of the sequence shown (loosen #13 first, followed by the remaining bolts in reverse order).
 - b. Remove the thirteen (13) bolts from the lower engine oil pan.

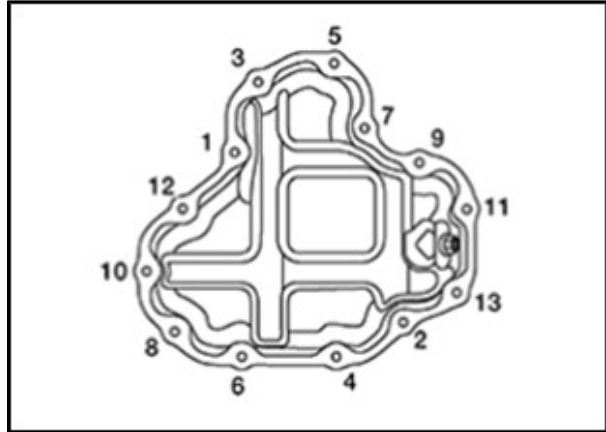


Figure 5

- c. Separate the lower engine oil pan from the upper engine oil pan using Sealer Cutter (NI-37228).

NOTICE

To avoid damage to the vehicle, do NOT separate the lower engine oil pan using a screwdriver. Tap the Sealer Cutter in, and then tap it on the side as shown to break the seal without damaging the mating surface.

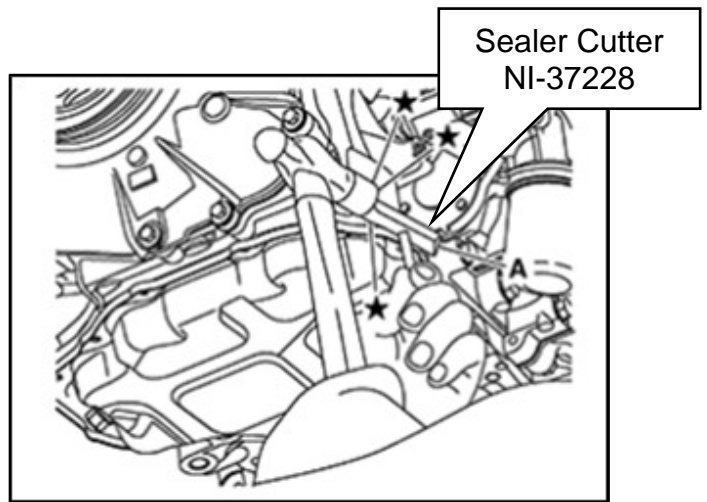


Figure 6

5. Pour the residual engine oil out of the oil pan for debris inspection.

HINT: Pour out enough engine oil so any debris in the oil pan is easily visually identified.

Lower Engine Oil Pan Inspection

6. Inspect the lower engine oil pan for accumulated metallic copper-colored bearing debris and compare to the examples in Figure 7 through Figure 11 (pages 7 to 9). Bearing material will appear as sparkly fine copper-colored debris accumulated in recessed areas of the oil pan.
7. Is the lower engine oil pan clean with either no debris or only slight metallic debris, similar to what is shown in Figure 7 through Figure 11?

IMPORTANT: Do not clean debris from the oil pan.

YES: The lower engine oil pan has no debris or only slight metallic debris (**GOOD**) similar to what is shown in Figure 7 through Figure 11 (pages 7 to 9). Continue to step 8 on page 12.

NO: The lower engine oil pan has accumulated metallic copper-colored bearing debris (**NO GOOD**) similar to what is shown in Figure 12 through Figure 14 on pages 10 to 11. Skip to step 12 on page 14.

IMPORTANT: For (**NO GOOD**) inspection results, do not reseal the oil pan to the engine. Only reinstall the oil pan with the oil pan bolts for engine parts return.



Figure 7

GOOD

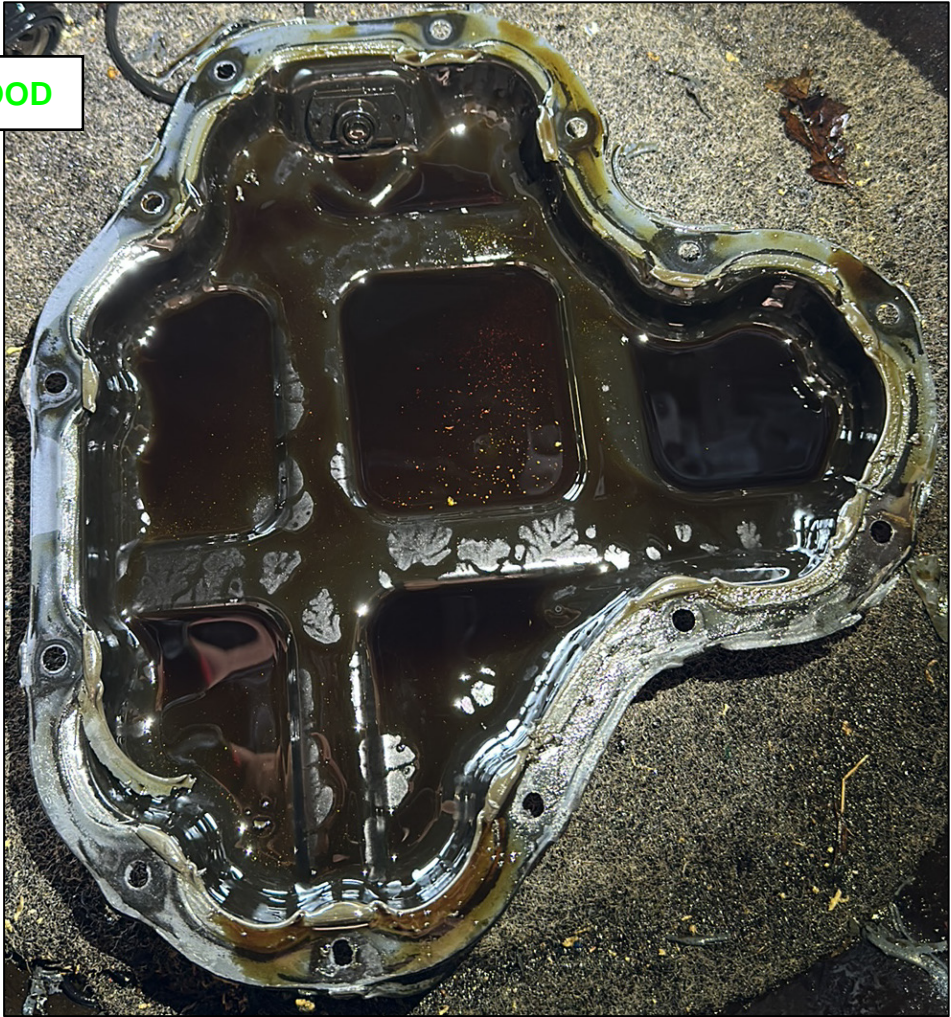


Figure 8

GOOD



Figure 9

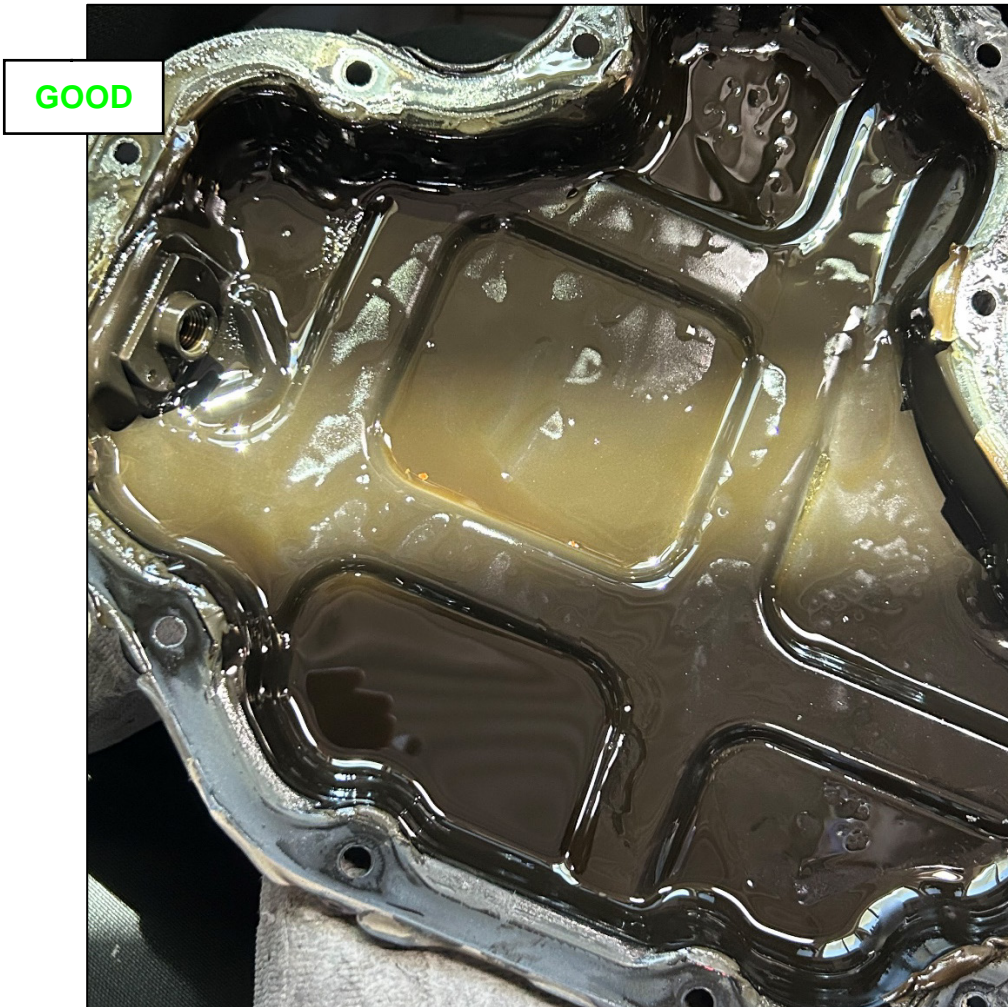


Figure 10

HINT: Gray RTV sealant debris migration is normal during oil pan removal (Figure 11). Do NOT replace the engine assembly for RTV debris. Remove the RTV sealant during normal oil pan cleaning.



Figure 11

- Figure 12 and Figure 13 below, and Figure 14 on page 11 are examples of a **NO GOOD** condition.

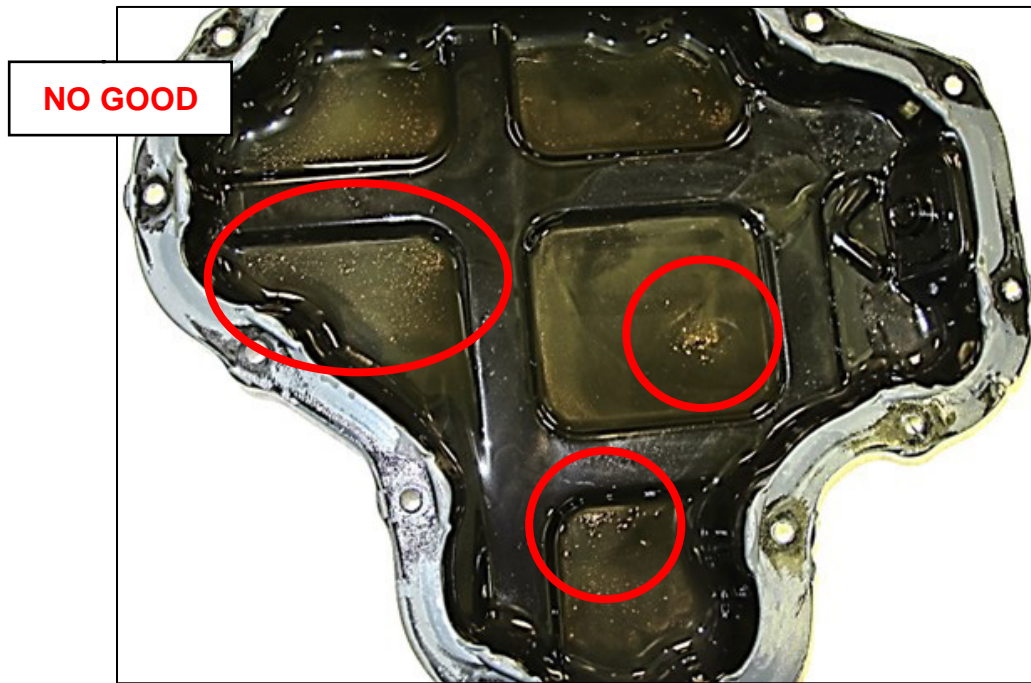


Figure 12



Figure 13

NO GOOD



Figure 14

Lower Engine Oil Pan Installation

CAUTION

To avoid minor or moderate injury and/or damage to the vehicle:

- Be careful not to damage the mating surface between the lower engine oil pan and the engine.
 - Do not pick the sealing area forcibly with a screwdriver as the factory default liquid gasket has better adhesion than the conventional one.
 - Do not scratch or damage the mating surface when cleaning off old liquid gasket.
 - Install components within 5 minutes of liquid gasket application.
 - Do not retighten lower engine oil pan bolts after 5 minutes have elapsed.
 - Allow 30 minutes for the liquid gasket to set before adding oil to the engine.
 - Do not reuse the drain plug washer.
8. If the lower engine oil pan inspection was **GOOD condition**, similar to what is shown in Figure 7 through Figure 11 (pages 7 to 9), reinstall the lower engine oil pan and fill with **NEW engine oil**.
- Refer to the ESM: **ENGINE > ENGINE MECHANICAL > KR20DDET > REMOVAL AND INSTALLATION > OIL PAN (LOWER) > OIL PAN (LOWER): Removal & Installation**
 - Torque the lower engine oil pan bolts to specification using the sequence in Figure 15.
 - Oil pan (lower) bolt torque: 10.1 N•m (1.0 kg-m, **7 ft-lb**)

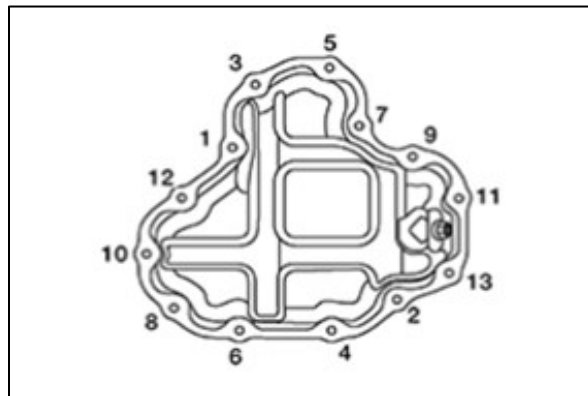


Figure 15

Quality Inspection

9. Inspect the following after lower engine oil pan installation:
- Check the engine oil level and adjust the oil level as required.
 - Start the engine and verify there are no engine oil leaks.
 - Stop the engine and wait 10 minutes.
 - Check the engine oil level again and adjust the oil level as required.

10. Install the front under cover.

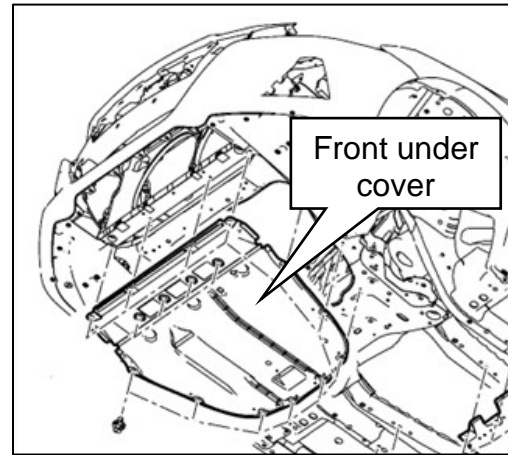


Figure 16

11. Inspection is complete, no further repairs required. Refer to **CLAIMS INFORMATION** on the last page and submit a claim for Inspection Only.

Engine Replacement

12. If the lower engine oil pan inspection was **NO GOOD condition**, similar to what is shown in Figure 12 through Figure 14 on pages 10 to 11, replace the long engine assembly (replace using normal campaign/warranty guidelines and preauthorization by Warranty Contact Center IS REQUIRED).
 - Refer to the ESM: **ENGINE > ENGINE MECHANICAL > KR20DDET > UNIT REMOVAL AND INSTALLATION > ENGINE ASSEMBLY > Removal & Installation**
 - Refer to **Campaign Related Information When Replacing Long Engine Assembly** for claim approval.

⚠CAUTION

To avoid minor or moderate injury and/or damage to the vehicle:

- Follow all Cautions, Warnings and Notes published in the Electronic Service Manual (ESM).
- Torque all fasteners per ESM exploded views.

Campaign Related Information When Replacing Long Engine Assembly

13. Record a short, continuous video that includes the following:
 - Bottom of lower engine oil pan clearly showing the debris.
 - Bottom of engine.
 - The Vehicle Identification Number (VIN) on the F.M.V.S.S. certification label (VIN label).
 - Ensure the continuous video has a clear image of the incident area(s) of the lower engine oil pan debris and the VIN on the VIN label.
14. Take **clear** pictures of the following:
 - One (1) picture of the complete oil pan.
 - Hold the oil pan at a 30 degree angle to reduce overhead light glare.
 - Fill camera image entirely with the complete oil pan, avoid excessive background.
 - Two (2) or more close-up pictures of the debris.
 - Hold the oil pan at a 30 degree angle to reduce overhead light glare.

HINT:

- Turn the camera flash off.
- Make sure the picture is taken in an area with adequate light.
- Make sure excessive engine oil is not in the pan obscuring the debris.

IMPORTANT:

- Blurry or unclear pictures will not be accepted.
- Failure to submit the information from Steps 13 and 14 will result in further requests for additional information.
- All information and clear pictures are required to obtain WCC determination.

15. Fill in the fields on the Warranty Contact Center Forms (Figure 17).

- While completing the Warranty Contact Center Form:
 - Select “Campaign” coverage type
 - Select “Campaign” diagnosis
 - Enter the Campaign Number

The screenshot shows the 'Warranty Contact Center Pre-authorization Start Screen'. At the top, there are logos for Nissan and Infiniti. The main title is 'Warranty Contact Center Forms'. Below this, the screen is divided into two sections. The top section contains three input fields: '* Dealer Code', 'NNANet Username', and '* 17 Digit VIN'. Below these is a section for '* Pre-authorization Form' with a list of radio button options: Start Harness Case, Update Harness Case, Glass Warranty, Paint Warranty, CM PM683, PM684, or PM964, LEAF Form, Altima HEV Form, Ariya HV Battery Form, LEAF Repair Complete, ARC Dealer Authorization, CVT Form, 12V Battery, Engine (selected), and Update Case. A callout box with a black border and white background points to the three input fields and the 'Engine' option, containing the text: 'Fill out these three lines, select "Engine", and then select Next'. At the bottom right, there is a green 'Next' button. Below the form, there is a QR code and a list of bulletins for Nissan and Infiniti, followed by a link to 'Chat with Support'.

Figure 17

- Attach the video and pictures to the Warranty Contact Center Forms.
 - After submitting the Preauthorization Warranty Contact Center Forms with the required video and photos (steps 13 and 14 on page 14), the Warranty Contact Center will respond via E-mail with a decision regarding replacement of the long engine assembly.

After Engine Replacement Procedures

16. Perform all of the following procedures after engine replacement, per the ESM:
- Check wheel alignment.
 - Refer to the ESM: **SUSPENSION > FRONT SUSPENSION > PERIODIC MAINTENANCE > WHEEL ALIGNMENT > WHEEL ALIGNMENT: Inspection**
 - Adjust Neutral position of steering angle sensor.
 - Refer to the ESM: **BRAKES > BRAKE CONTROL SYSTEM > VDC/TCS/ABS > BASIC INSPECTION > BRAKE CONTROL SYSTEM > ADJUSTMENT OF STEERING ANGLE SENSOR NEUTRAL POSITION > Work Procedure**
 - Perform electric intake valve timing control actuator position learning.
 - Refer to the ESM: **ENGINE > ENGINE CONTROL SYSTEM > KR20DDET > BASIC INSPECTION > ELECTRIC IVT CONTROL ACTUATOR POSITION LEARNING > Work Procedure**
 - Perform valve timing offset data clear.
 - Refer to the ESM: **ENGINE > ENGINE CONTROL SYSTEM > KR20DDET > BASIC INSPECTION > VALVE TIMING OFFSET DATA CLEAR > Work Procedure**
 - Perform valve timing offset data writing.
 - Refer to the ESM: **ENGINE > ENGINE CONTROL SYSTEM > KR20DDET > BASIC INSPECTION > VALVE TIMING OFFSET DATA WRITING > Work Procedure**
 - Perform idle air volume learning.
 - Refer to the ESM: **ENGINE > ENGINE CONTROL SYSTEM > KR20DDET > BASIC INSPECTION > IDLE AIR VOLUME LEARNING > Work Procedure**
 - Perform engine oil data reset.
 - Refer to the ESM: **ENGINE > ENGINE CONTROL SYSTEM > KR20DDET > BASIC INSPECTION > ENGINE OIL DATA RESET > Work Procedure**
 - Perform A/F initial learning.
 - Refer to the ESM: **ENGINE > ENGINE CONTROL SYSTEM > KR20DDET > BASIC INSPECTION > AIR FUEL RATIO INITIAL LEARNING > Work Procedure**
 - Check CVT fluid level.
 - Refer to the ESM: **TRANSMISSION & DRIVELINE > TRANSAXLE AND TRANSMISSION > CVT: REF0F10H > Periodic Maintenance > CVT FLUID > Adjustment**

Erase DTCs

- Using CONSULT III plus, erase any “engine” diagnostic trouble codes that may have set during the repair.

PARTS INFORMATION (Inspection Only)

DESCRIPTION	PART NUMBER	QUANTITY
WASHER – DRAIN PLUG	11026-JA00A	1
THREEBOND 1217H GASKET	999MP1217HP	1 (1)
ESTER ENG OIL 5W30 (GL4) OR Equivalent MOBIL 1 5W30 (API SN)	999MP5W30EP (quart bottle) OR 999PK05W30M1 (quart bottle), 999BK5W30M1Q (bulk quart), 999DK5W30M1Q (drum quart)	5 (1)

- Order this item through the Nissan Maintenance Advantage program: Phone 877-NIS-NMA1 (877-647-6621). Website order via link on the dealer portal; www.NNAnet.com and click on the “Maintenance Advantage-Tire/Battery/Chemical” link.

CLAIMS INFORMATION

Submit a “CM” line claim using the following claims coding:

CAMPAIGN (“CM”) ID	DESCRIPTION	OP CODE	FRT
R25B2	Inspect Engine Oil Pan (Lower) GOOD CONDITION	R25B20	0.8

AMENDMENT HISTORY

PUBLISHED DATE	REFERENCE	DESCRIPTION
July 14, 2025	ITB25-010	Original bulletin published
July 28, 2025	ITB25-010A	Changes throughout, HINT and Figure 7 added on page 7, PARTS INFORMATION updated
December 3, 2025	ITB25-010B	Changes throughout, added page 2