



I N F I N I T I

VOLUNTARY RECALL CAMPAIGN

Classification: EM25-005	Reference: ITB25-010	Date: July 14, 2025
-----------------------------	-------------------------	------------------------

VOLUNTARY SAFETY RECALL CAMPAIGN 2019-2022 QX50 AND 2022 QX55; VCR ENGINE INSPECTION

CAMPAIGN ID #: R25B2
APPLIED VEHICLES: 2019-2022 QX50 (J55)
2022 QX55 (FJ55)

**Check Service COMM or Dealer Business Systems (DBS)
National Service History to confirm campaign eligibility.**

INTRODUCTION

Infiniti is conducting this voluntary safety recall campaign on certain specific model year 2019-2022 QX50 and 2022 QX55 vehicles equipped with the KR20DDET engine to inspect the engine, and if applicable, replace the engine. This service will be performed at no charge to the client for parts or labor.

IDENTIFICATION NUMBER

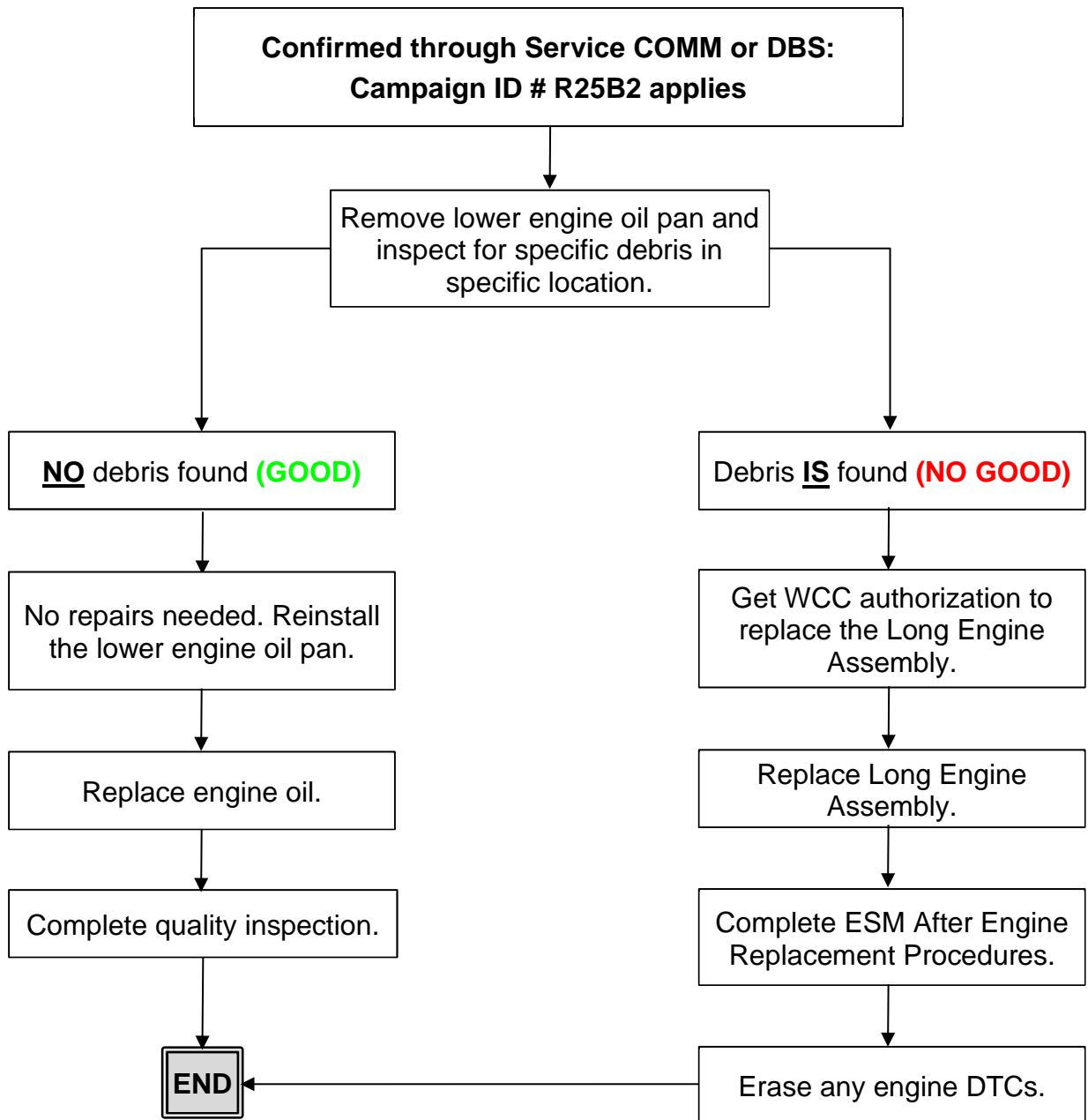
Infiniti has assigned identification number R25B2 to this campaign. This number must appear on all communication and documentation of any nature dealing with this campaign.

RETAILER RESPONSIBILITY

It is the retailer's responsibility to check Service COMM or Dealer Business Systems (DBS) National Service History for the campaign status on each vehicle falling within the range of this voluntary safety recall which for any reason enters the service department. This includes vehicles purchased from private parties or presented by transient (tourist) clients and vehicles in a retailer's inventory. **Federal law requires that new vehicles in retailer inventory which are the subject of a safety recall must be corrected prior to sale. Failure to do so can result in civil penalties by the National Highway Traffic Safety Administration.** While federal law applies only to new vehicles, Infiniti strongly encourages retailers to correct any used vehicles in their inventory before they are retailed.

Bulletins are intended for use by qualified technicians, not 'do-it-yourselfers'. Qualified technicians are properly trained individuals who have the equipment, tools, safety instruction, and know-how to do a job properly and safely. **NOTE:** If you believe that a described condition may apply to a particular vehicle, DO NOT assume that it does. See your Infiniti retailer to determine if this applies to your vehicle.

REPAIR OVERVIEW



REQUIRED SPECIAL TOOL(S)

New or replacement Essential Tools are available from Tech•Mate online: www.techmatetools.com, or by phone: 1-833-397-3493.

When ordering, keep in mind that the tool part number prefix has changed from “J” to “NI”. For example, J-37228 is now NI-37228.

Sealer Cutter Tool (NI-37228)

- Each dealer has been previously shipped one Sealer Cutter Tool (NI-37228).

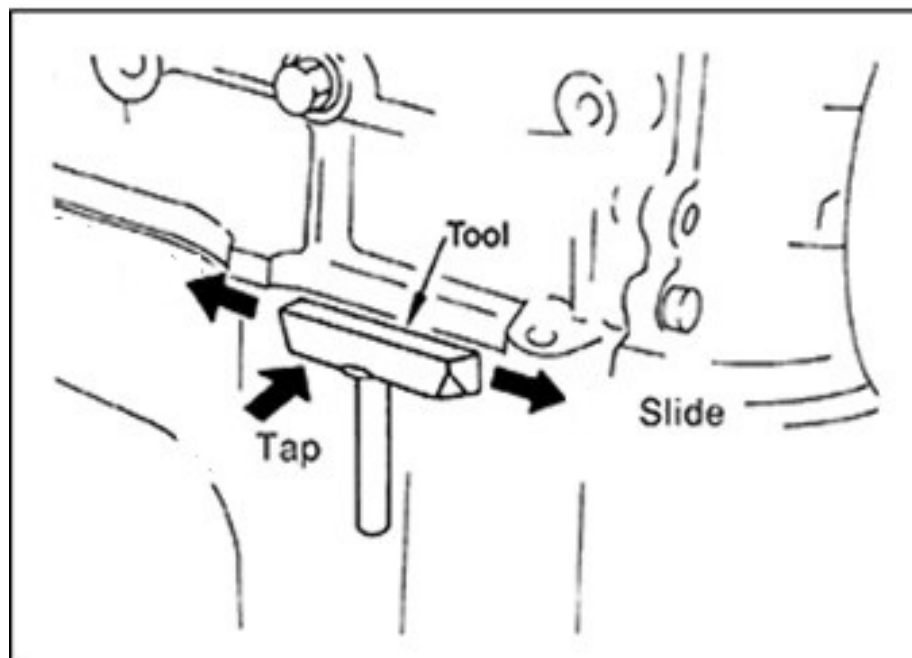


Figure 1

SERVICE PROCEDURE

Lower Engine Oil Pan Removal

1. Place the vehicle on a suitable lift and raise it up.
2. Remove the front under cover.
 - a. Remove the front under cover bolts and clips.
 - b. Remove the front under cover and set aside.

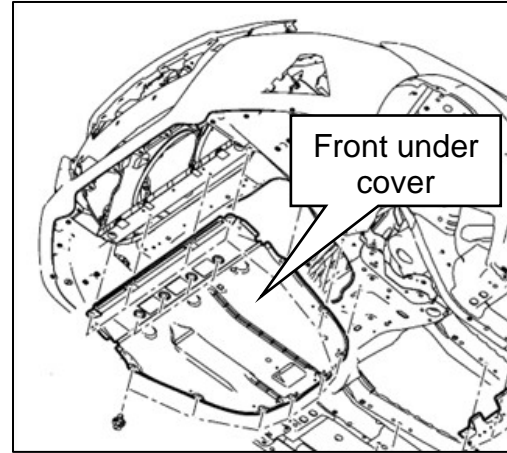


Figure 2

3. Drain the engine oil into a suitable container.
 - **Do NOT remove the engine oil filter.**

4. Remove the lower engine oil pan using the following steps:
 - a. Loosen the lower engine oil pan bolts in the reverse order of the sequence shown (loosen #13 first, followed by the remaining bolts in reverse order).
 - b. Remove the 13 bolts from the lower engine oil pan.
 - c. Separate the lower engine oil pan from the upper engine oil pan using Sealer Cutter (NI-37228).

NOTICE

To avoid damage to the vehicle, do NOT separate the lower engine oil pan using a screwdriver. Tap the Sealer Cutter in, and then tap it on the side as shown to break the seal without damaging the mating surface.

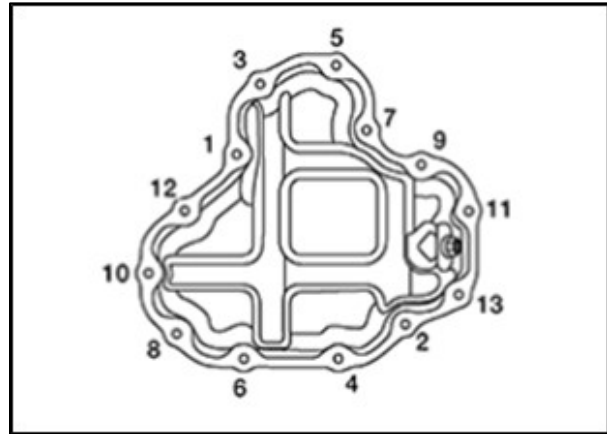


Figure 3

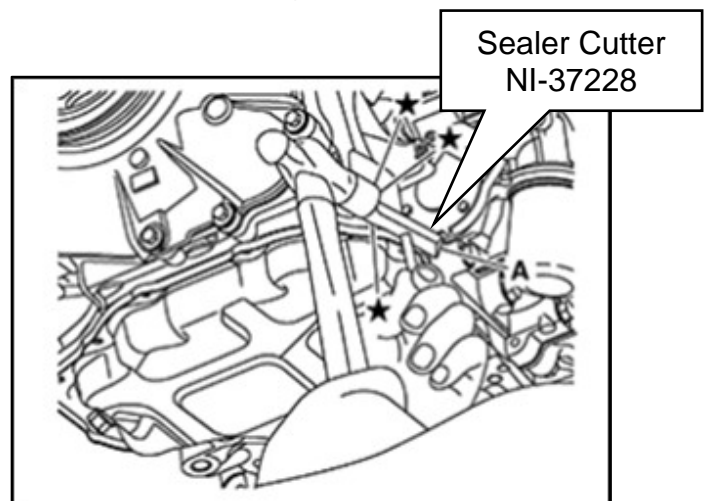


Figure 4

Lower Engine Oil Pan Inspection

5. Inspect the lower engine oil pan for accumulated metallic-colored debris and compare to the examples in Figure 5 and Figure 6. Is the lower engine oil pan clean with either no debris or only slight metallic debris like what is shown in Figure 5?

YES: The lower engine oil pan has no debris or only slight metallic debris (**GOOD**) like what is shown in Figure 5. Continue to step 6 on page 7.

NO: The lower engine oil pan has accumulated metallic debris (**NO GOOD**) like what is shown in Figure 6. Skip to step 9 on page 9.



Figure 5

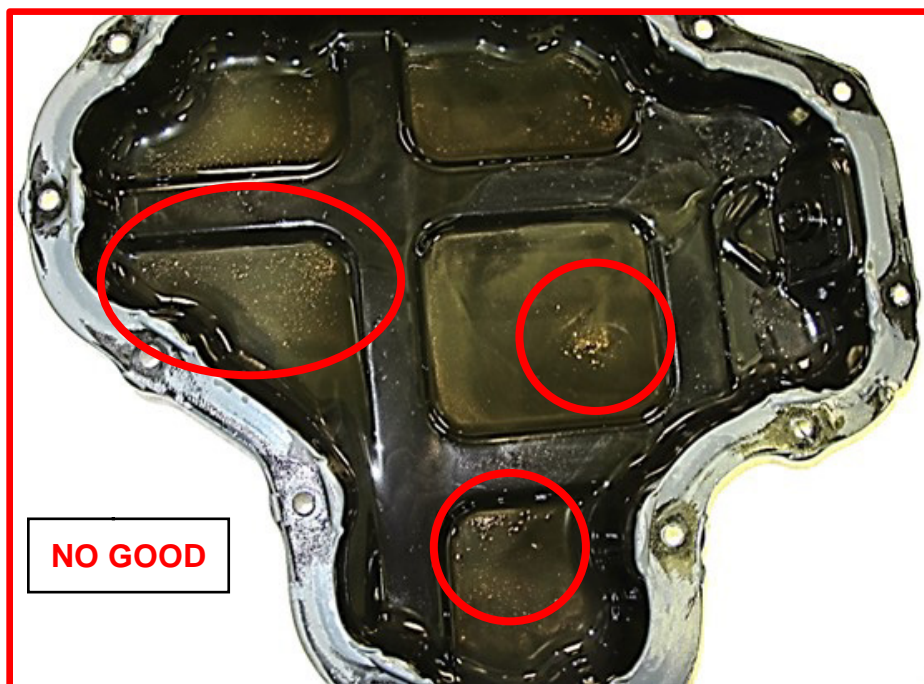


Figure 6

Lower Engine Oil Pan Installation

CAUTION

To avoid minor or moderate injury and/or damage to the vehicle:

- Be careful not to damage the mating surface between the lower engine oil pan and the engine.
 - Do not pick the sealing area forcibly with a screwdriver as the factory default liquid gasket has better adhesion than the conventional one.
 - Do not scratch or damage the mating surface when cleaning off old liquid gasket.
 - Install components within 5 minutes of liquid gasket application.
 - Do not retighten lower engine oil pan bolts after 5 minutes have elapsed.
 - Allow 30 minutes for the liquid gasket to set before adding oil to the engine.
 - Do not reuse the drain plug washer.
6. If the lower engine oil pan inspection was **GOOD condition**, like what is shown in Figure 5 on page 6, reinstall the lower engine oil pan and **install NEW engine oil**.
- Refer to the ESM: **ENGINE > ENGINE MECHANICAL > KR20DDET > REMOVAL AND INSTALLATION > OIL PAN (LOWER) > OIL PAN (LOWER): Removal & Installation**
 - Torque the lower engine oil pan bolts to specification using the sequence in Figure 7.
 - Oil pan (lower) bolt torque: 10.1 N•m (1.0 kg-m, **7 ft-lb**)

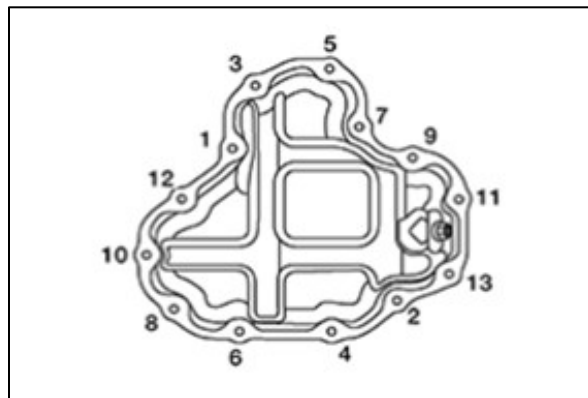


Figure 7

Quality Inspection

7. Inspect the following after lower engine oil pan installation:
 - Check the engine oil level and adjust the oil level as required.
 - Start the engine and verify there are no engine oil leaks.
 - Stop the engine and wait 10 minutes.
 - Check the engine oil level again and adjust the oil level as required.
8. Inspection is complete, no further repairs required. Refer to **CLAIMS INFORMATION** on the last page and submit a claim for Inspection Only.

Engine Replacement

9. If the lower engine oil pan inspection was **NO GOOD condition**, like what is shown in Figure 6 on page 6, replace the long engine assembly (replace using normal campaign/warranty guidelines and preauthorization by Warranty Contact Center IS REQUIRED).
 - Refer to the ESM: **ENGINE > ENGINE MECHANICAL > KR20DDET > UNIT REMOVAL AND INSTALLATION > ENGINE ASSEMBLY > Removal & Installation**
 - Refer to **Campaign Related Information When Replacing Long Engine Assembly** for claim approval.

CAUTION

To avoid minor or moderate injury and/or damage to the vehicle:

- Follow all Cautions, Warnings and Notes published in the Electronic Service Manual (ESM).
- Torque all fasteners per ESM exploded views.

Campaign Related Information When Replacing Long Engine Assembly

10. Record a short, continuous video (15 seconds or less) that includes the following:
 - Bottom of lower engine oil pan clearly showing the debris.
 - The Vehicle Identification Number (VIN) on the F.M.V.S.S. certification label (VIN label).
 - Ensure the continuous video has a clear image of the incident area(s) of the lower engine oil pan debris and the VIN on the VIN label.

11. Fill in the fields on the Warranty Contact Center Forms (Figure 8 on page 10).
 - While completing the Warranty Contact Center Form:
 - Select “Campaign” coverage type
 - Select “Campaign” diagnosis
 - Enter the Campaign Number

Warranty Call Center Precall

Warranty Contact Center Forms

Warranty Contact Center Pre-authorization Start Screen

* Dealer Code

NNANet Username

* 17 Digit VIN

* Pre-authorization Form

- Start Harness Case
- Update Harness Case
- Glass Warranty
- Paint Warranty
- CM PM683, PM684, or PM964
- LEAF Form
- Altima HEV Form
- Ariya HV Battery Form
- LEAF Repair Complete
- ARC Dealer Authorization
- CVT Form
- 12V Battery
- Engine
- Update Case

Fill out these three lines, select "Engine", and then select **Next**

Before proceeding, reference the following bulletins for details and specific instructions relating to information required for the pre-call form.

Nissan

NTB14-032 Electrical Harness Repair Information
 NTB09-081 Windshield Cracking
 NTB17-019 Window Glass Warranty Information
 NTB13-028 Removing Foreign Material from Window Glass
 NTB17-055_2002 – 2006 SENTRA; FRONT PASSENGER AIR BAG INFLATOR
 See Parts and Service Bulletin for White Paint Delamination Warranty Extension

Infiniti

ITB14-020 Electrical Harness Repair Information
 ITB09-039 Windshield Cracking
 ITB17-009 Window Glass Warranty Information
 ITB13-007 Removing Foreign Material from Window Glass
 See Parts and Service Bulletin for White Paint Delamination Warranty Extension

Please click the link below to start a chat.

[Chat with Support](#)

Next

Figure 8

- Attach the video and the parts list to the Warranty Contact Center Forms.
 - After submitting the Preauthorization Warranty Contact Center Forms with the attached video and parts list, the Warranty Contact Center will respond via E-mail regarding replacement of the long engine assembly (with oil and oil filter, coolant, etc).

After Engine Replacement Procedures

12. Perform all of the following procedures after engine replacement, per the ESM:
 - Check wheel alignment.
 - Refer to the ESM: **SUSPENSION > FRONT SUSPENSION > PERIODIC MAINTENANCE > WHEEL ALIGNMENT > WHEEL ALIGNMENT: Inspection**
 - Adjust Neutral position of steering angle sensor.
 - Refer to the ESM: **BRAKES > BRAKE CONTROL SYSTEM > VDC/TCS/ABS > BASIC INSPECTION > BRAKE CONTROL SYSTEM > ADJUSTMENT OF STEERING ANGLE SENSOR NEUTRAL POSITION > Work Procedure**
 - Perform electric intake valve timing control actuator position learning.
 - Refer to the ESM: **ENGINE > ENGINE CONTROL SYSTEM > KR20DDET > BASIC INSPECTION > ELECTRIC IVT CONTROL ACTUATOR POSITION LEARNING > Work Procedure**
 - Perform valve timing offset data clear.
 - Refer to the ESM: **ENGINE > ENGINE CONTROL SYSTEM > KR20DDET > BASIC INSPECTION > VALVE TIMING OFFSET DATA CLEAR > Work Procedure**
 - Perform valve timing offset data writing.
 - Refer to the ESM: **ENGINE > ENGINE CONTROL SYSTEM > KR20DDET > BASIC INSPECTION > VALVE TIMING OFFSET DATA WRITING > Work Procedure**
 - Perform idle air volume learning.
 - Refer to the ESM: **ENGINE > ENGINE CONTROL SYSTEM > KR20DDET > BASIC INSPECTION > IDLE AIR VOLUME LEARNING > Work Procedure**
 - Perform engine oil data reset.
 - Refer to the ESM: **ENGINE > ENGINE CONTROL SYSTEM > KR20DDET > BASIC INSPECTION > ENGINE OIL DATA RESET > Work Procedure**
 - Perform A/F initial learning.
 - Refer to the ESM: **ENGINE > ENGINE CONTROL SYSTEM > KR20DDET > BASIC INSPECTION > AIR FUEL RATIO INITIAL LEARNING > Work Procedure**
 - Check CVT fluid level.
 - Refer to the ESM: **TRANSMISSION & DRIVELINE > TRANSAXLE AND TRANSMISSION > CVT: REF0F10H > Periodic Maintenance > CVT FLUID > Adjustment**

Erase DTCs

- Using CONSULT III plus, erase any “engine” diagnostic trouble codes that may have set during the repair.

PARTS INFORMATION (Inspection Only)

DESCRIPTION	PART NUMBER	QUANTITY
WASHER – DRAIN PLUG	11026-JA00A	1
THREEBOND 1217H GASKET	999MP1217HP	1 (1)
ESTER ENG OIL 5W30 (GL4) OR Equivalent MOBIL 1 5W30 (API SN)	999MP5W30EP OR 999PK05W30M1	5 (1)

- Order this item through the Nissan Maintenance Advantage program: Phone 877-NIS-NMA1 (877-647-6621). Website order via link on the dealer portal; www.NNAnet.com and click on the “Maintenance Advantage-Tire/Battery/Chemical” link.

CLAIMS INFORMATION

Submit a “CM” line claim using the following claims coding:

CAMPAIGN (“CM”) ID	DESCRIPTION	OP CODE	FRT
R25B2	Inspect Engine Oil Pan (Lower) GOOD CONDITION	R25B20	0.8

AMENDMENT HISTORY

PUBLISHED DATE	REFERENCE	DESCRIPTION
July 14, 2025	ITB25-010	Original bulletin published