



WORK INSTRUCTIONS

MODEL G & Z MORryde PATIO STEP MOUNTING BOLTS RECALL

RECALL:	900008 Model G & Z MORryde Patio Step Mounting Bolts Recall		
PRODUCT:	Model G and Z	REVISION:	REV-B
DATE:	May 8, 2025	LABOR RATE:	0.3 hours

Applies to:

This document refers to Model G and Z Fifth Wheels with MORryde detachable patio steps installed. It applies to all Model G floor plans, between VINs 0919 and 2238. It also applies to Model Z 3400 floor plan between VINs 3269 and 7218.

Condition:

It has been decided that the vehicles in the recall population were assembled with MORryde Patio Step mounting bolts which can unscrew and detach from the installed bracket. If this receiver becomes loose while being used, it can disengage from the fastener that is used to assemble it to the bracket and disconnect from the bracket, allowing the step assembly to fall from its use location. The remedy is to replace the suspect brackets with brackets built with the thread locking compound that will prevent the bracket from coming loose.

Safety:

Safety is, and should always be observed when performing any type of repair. Service, repair and installation instructions are written specifically for the use of professionally trained technicians, using proper tools in a shop environment. For safety, and to ensure the best results, only professionally trained technicians should perform the work described in this document.

See the table below to determine the correct replacement kit needed for your specific unit. The instructions on the following pages will provide the procedure required to replace the suspect brackets.

Brinkley Model	Floor Plan	VIN Range	BRV Kit Part Number	Defective MORryde Bracket Part Number	MORryde Replacement Kit Number
Model G	All	0919 - 2238	K117579	STP56-015	STP54-080
Model Z	3400	3269 - 3374 3493 - 3856			
Model Z	3400	3375 3857 - 7218	K117580	STP56-038	STP54-086





CLIP-ON BRACKET

REPLACEMENT INSTRUCTIONS FOR STP56-015

REPLACEMENT KIT | STP54-080



Above. Beyond. Always.

574.293.1581
www.MORryde.com



Work Instructions: 900008 Model G & Z MORryde Patio Step Mounting Bolts Recall

Revision Level: REV-B

Product: Model G and Z

Page 2 of 5

CLIP-ON BRACKET

INSTALLATION INSTRUCTIONS

Tools Required:

- 3/8" Wrench/Ratchet
- Drill with 3/8" Driver Bit

STEP 1

Remove the four mounting screws that secure the STP56-015 mounting bracket. Once removed, discard the original mounting bracket.

Note: It is OK to use a drill for the removal of each of the screws.



STEP 2

Use the replacement kit (STP54-080) to attach the new mounting bracket. To install the new bracket, start by installing four mounting screws into the four original holes.

Note: The above mentioned holes will line up with the holes from the bracket that was removed.

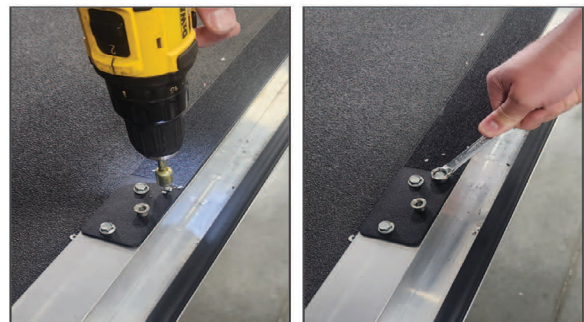
Note: To avoid over-torquing these screws, it is necessary that final tightening be by hand with a 3/8" wrench.



STEP 3

Use a drill and 3/8" driver to install the outer two new screws in the mounting brackets.

Note: To avoid over-torquing these screws, it is necessary that final tightening be by hand with a 3/8" wrench.

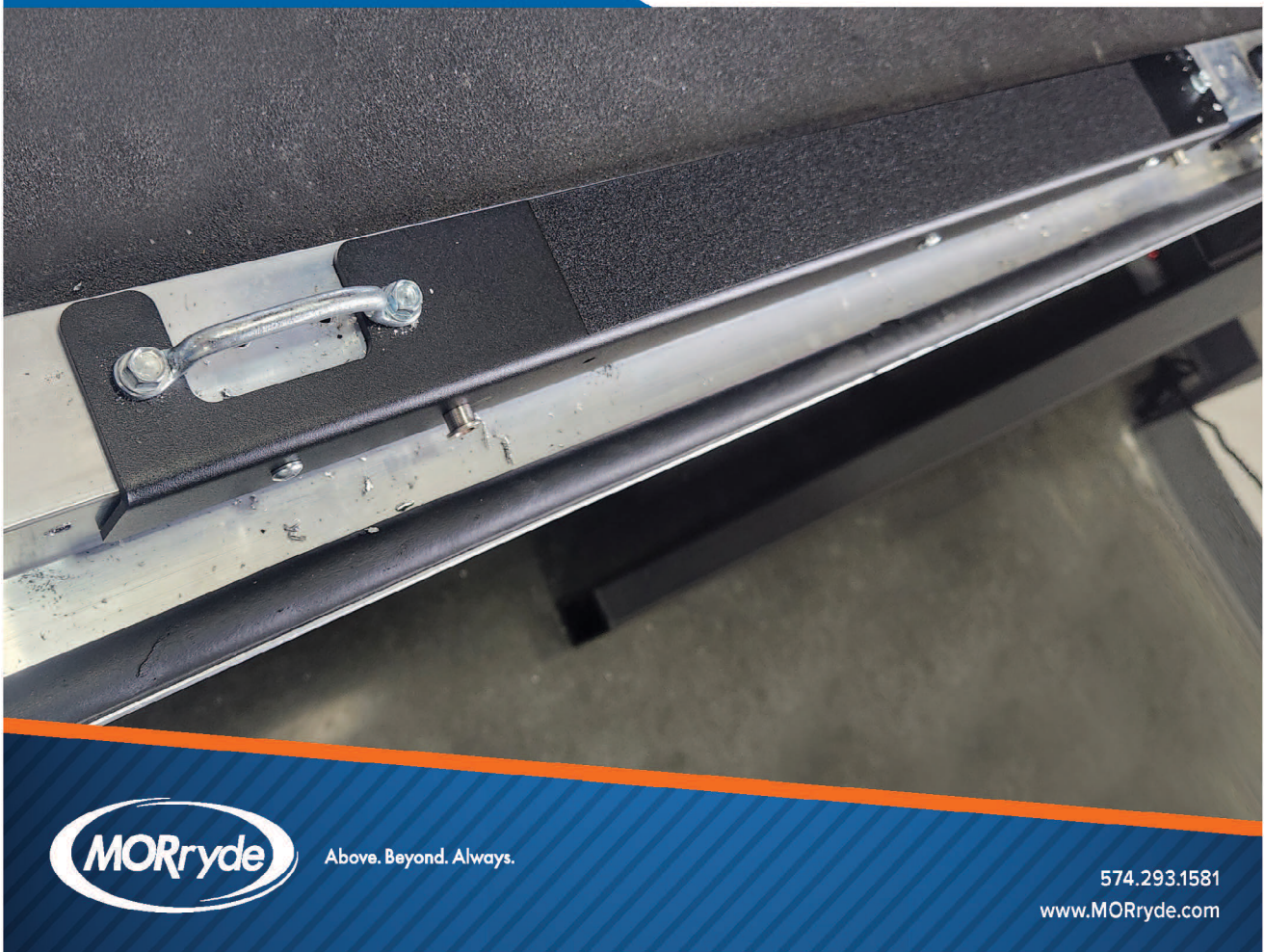




CLIP-ON BRACKET

REPLACEMENT INSTRUCTIONS FOR STP56-038

REPLACEMENT KIT | STP54-086



Above. Beyond. Always.

574.293.1581
www.MORryde.com



Work Instructions: 900008 Model G & Z MORryde Patio Step Mounting Bolts Recall

Revision Level: REV-B

Product: Model G and Z

Page 4 of 5

CLIP-ON BRACKET

INSTALLATION INSTRUCTIONS

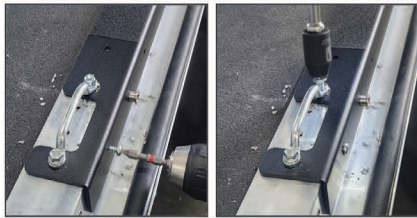
Tools Required:

- 3/8" Wrench/Ratchet
- Drill with 3/8" Driver Bit
- #2 Square Drive Drill Bit
- #2 Square Drive Screwdriver

STEP 1

Remove the six mounting screws that secure the STP56-038 mounting bracket. Once removed, discard the original mounting bracket.

Note: It is OK to use a drill for the removal of each of the screws.



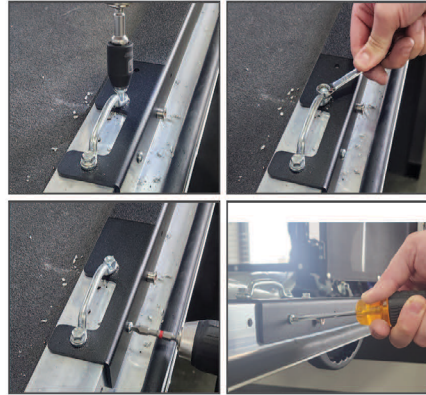
STEP 2

Use the replacement kit (STP54-086) to attach the new mounting bracket. To install the new bracket, start by installing six mounting screws into the six original holes.

Note: The above mentioned holes will line up with the holes from the bracket that was removed.

Note: Please ensure that the hex screws are reinstalled on top of the bracket and the low profile square drive screws are mounted on the front of the bracket, the same as they were removed.

Note: To avoid over-torquing these screws, it is necessary that final tightening be by hand with a 3/8" wrench and #2 square drive screwdriver.



STEP 3

Use a drill and 3/8" driver to install the two new screws on top of the mounting brackets. Then use the drill and #2 square screwdriver to install the two new flathead screws on the front of the bracket.

Note: To avoid over-torquing these screws, it is necessary that final tightening be by hand with a 3/8" wrench and a #2 drive screwdriver.

