



Service Bulletin

American Honda Motor Co., Inc.

CB300R #1
Revised: May 2025

SAFETY RECALL

CB300R/RA HEADLIGHT ASSEMBLY

BACKGROUND

Honda is launching a **SAFETY RECALL** on **ALL 2019 - 2024** and **CERTAIN 2025 CB300R/RA motorcycles** to replace the headlight assembly. Due to a manufacturing defect, the headlight's internal circuitry may become damaged due to road and engine vibrations experienced during normal vehicle operation. The headlight may begin to flicker and eventually shut off, potentially increasing the risk of a crash or injury.

AFFECTED UNITS

As of March 31, 2025, you **MUST NOT SELL** any **AFFECTED NEW** or **USED** 2019 - 2025 CB300R/RA motorcycles until repaired according to this Service Bulletin. Additionally, you **MUST NOT SELL** or **INSTALL** any affected headlight with part number 33100-K94-T02.

- To search for applicable recalls on a specific unit, you **MUST** use *Unit Information* on **iN**.
- To manage your affected new inventory, use your dealer *eResponsibility Report* on **iN**.

CUSTOMER NOTIFICATION

American Honda intends to mail customer letters to all owners of affected 2019 - 2025 CB300R/RA motorcycles by May 2025. Customers will be informed that their motorcycle may be affected by a safety related defect and will be advised to make an appointment with an authorized Honda dealer for repair once parts become available.

PARTS INFORMATION

Parts can be ordered through the *Controlled Parts Order* process. An affected VIN will be required to order the Headlight Assembly listed below.

Click the following link for instructions: [CONTROLLED PARTS ORDER PROCEDURE](#) on page 5.

Part Name	Part Number	Qty.
Kit, Light Assembly Head	06330-K94-305	1
The set includes the following parts:		
Light Assembly, Head		1
Rubber, Front Fender Mount		2
Grommet, Rear Cowl		1

NEW

DEALER REPAIR RESPONSIBILITY

- Repairs must be performed by a qualified technician.
- Performing this repair exactly as shown in Repair Procedure instructions is critical for the remedy to be effective. Carefully follow all instructions.
- Service Management should inspect and confirm the repair.
- Dealer submission of a warranty claim affirms this repair was properly performed.

WARRANTY CLAIM INFORMATION

After completing this *Service Bulletin* repair, submit one warranty claim per unit with the applicable template number.

YEAR	MODEL	TEMPLATE	FLAT RATE
2019 - 2025	CB300R	Headlight Replacement KS0A*	0.7

* The **0** is a zero and not the letter O (KS zero).

Notes:

All warranty template claims will reimburse freight. To ensure your dealership receives the freight credit, follow these steps.

1. Make sure 'YES' is selected from the *Freight Involved* drop down window.
2. Make sure to include the *Part Order Reference Number*.
3. Include the freight *Amount* associated with the listed *Part Order Reference Number*.
 - The *Part Order Reference Number* can be found on your *Parts Order Statement* on *iN*.

• = Required

Template Warranty Claim

Template Number*

Basic Claim Information (required for all claim types)

Claim No.* Repair Order Number*

VIN* Repair Order Date (open)*

Mileage* Work Completed Date*

Sublet Involved?

Freight Involved? Freight Information

Part Order Reference Number* Amount*

DEALER SUPPORT

TECHNICAL QUESTIONS

If you have any technical questions relating to this update procedure, please contact:

Motorcycle TechLine Online:

iN > Service > TechLine > TechLine Connect

WARRANTY QUESTIONS

If you have any warranty administration questions relating to warranty claim templates, and claim filing procedures, please contact:

Motorcycle Warranty Online:

iN > Service > Warranty & HondaCare > Warranty Connect Filing

RECALL REPAIR IDENTIFICATION

Before you begin the repair procedure, verify that the unit has not already been repaired by searching *Unit Information* on *iN*.

REPAIR PROCEDURE

Refer to the appropriate service manual if you need additional information or assistance.

NOTE: Be careful not to scratch any parts.

1. Remove the following:

- Socket bolts (six) [1]
- Headlight cover [2]
- Bolt/washers [3]
- Wire clip [4]
- Headlight [5]
- Collars (two) [6]

2. Disconnect the headlight 8P (Black) connector [7].

NOTES:

- Two collars [6], four clips nuts [8] and the harness stay (with two screws) [9] should be reused.
- Replace the two mount rubbers [10] and the grommet [11] with new ones from the kit.

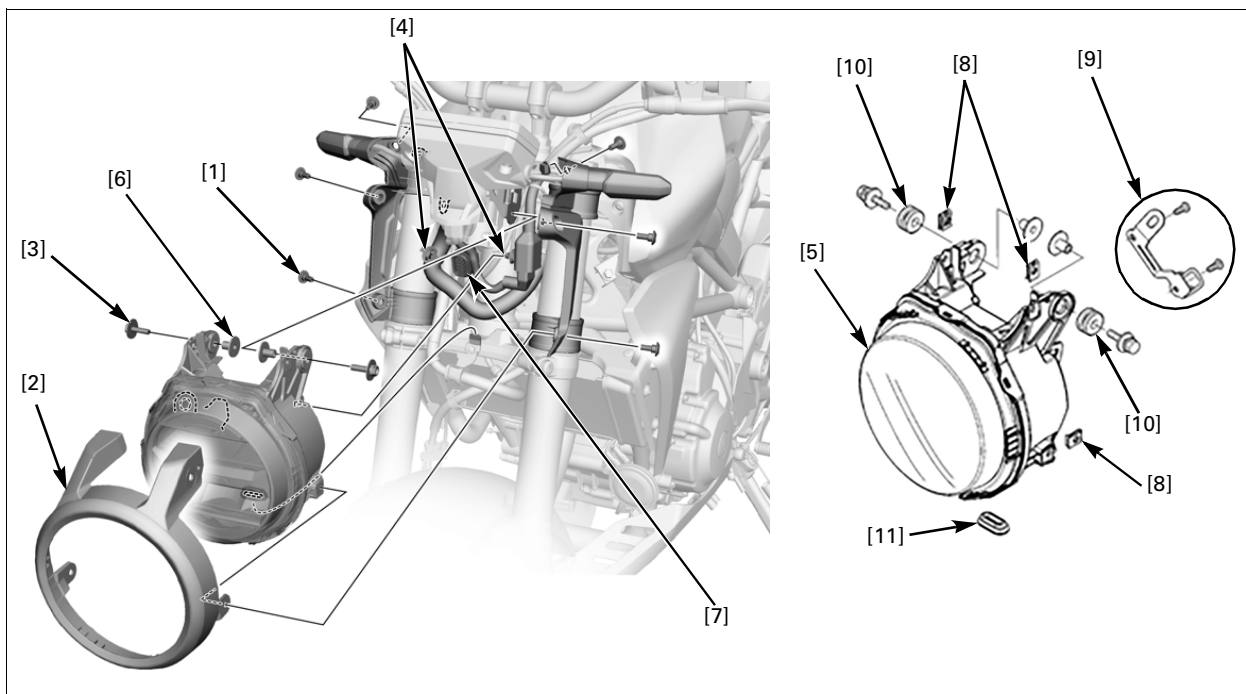
3. Installation is in the reverse order of removal.

Adjust the headlight aim after the new headlight is installed ([page 4](#)).

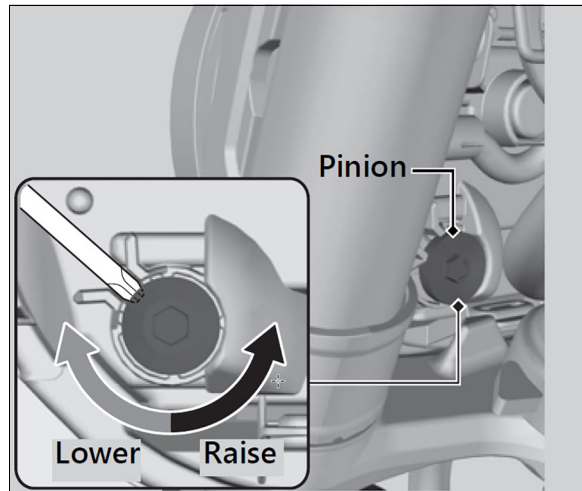
TORQUE:

Headlight cover mounting socket bolt [1]:

4.2 N·m (0.4 kg-m, 36 in-lb)



4. Adjust the headlight aim.
 - A. Place the motorcycle on a level surface.
 - B. Adjust vertically by turning the vertical adjusting pinion [1].
 - C. A counterclockwise rotation moves the beam up and clockwise rotation moves the beam down.



NOTE:
Adjust the headlight aim as specified by local laws and regulations.

5. Proceed to the *Warranty Claim Information* section and file a Headlight Replacement (KS0A) claim.

CONTROLLED PARTS ORDER PROCEDURE

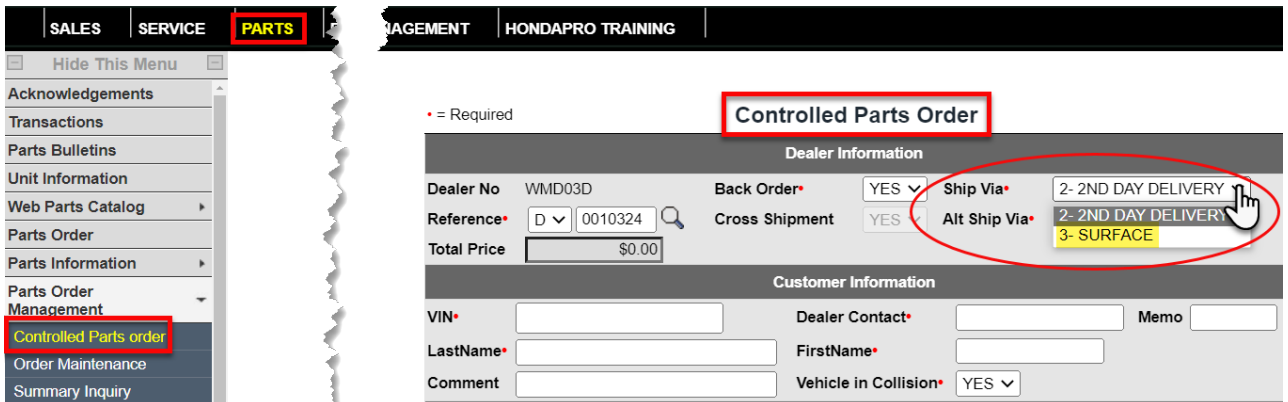
To order parts through the Controlled Parts Order process, follow the steps below:

1. From the *iN* home page go to:

Parts > Parts Order Management > Controlled Parts Order

Select the desired shipping method from the **Ship Via** drop down list.

NOTE: The default *Ship Via* is 2ND DAY DELIVERY, which will incur additional freight charges to the dealer. Normal freight charges apply if the order does not meet the pre-paid freight minimum.



2. Enter the required information: *VIN*, *Dealer Contact*, *Customer Name*, *Part Number* and *Quantity* (you may order only one (1) part per part number).

3. Set *Vehicle in Collision* and *Specification Label Request* to *NO*.

4. Click Submit.

• = Required

Controlled Parts Order

Dealer Information					
Dealer No	<input type="text"/>	Back Order*	YES ▾	Ship Via*	3- SURFACE ▾
Reference*	D ▾ <input type="text"/>	Cross Shipment	YES ▾	Alt Ship Via*	3- SURFACE ▾
Total Price	<input type="text"/>				
Customer Information					
VIN*	<input type="text" value="3H1JK07"/>	Dealer Contact*	<input type="text"/>	Memo	<input type="text" value="KP1"/>
LastName*	<input type="text"/>	FirstName*	<input type="text"/>		
Comment	<input type="text" value="KP1 CAMPAIGN"/>	Vehicle in Collision*	NO ▾		
Specification Label Request*		NO ▾			
Submit		Save	Confirm	Search by	PART NUMBER ▾ <input type="text"/> Search
It.	Part*	Qty*	Description	Unit Price	
1	<input type="text" value="44830-KTE-D12"/>	<input type="text" value="1"/>	<input type="text" value="CABLE COMP, SPDMT"/>	<input type="text"/>	Delete
2	<input type="text"/>	<input type="text"/>	<input type="text"/>	<input type="text"/>	Delete