

Technical information

Daimler Buses

TI No.: 91.10T25327A

Distribution list: D

Distribution date:

24.04.2025

Valid until: 31.12.2045

The point of contact is the Daimler Buses after-sales service in each country

Model: Tourrider USA

MODEL DESIGNATION 410840; 410850

(BM):

TITLE: Tourrider USA – stop (fixate stop) not mounted on backrest of ISRI driver’s seat

COMPLAINT

The prescribed stop is not mounted on the backrest of the ISRI driver’s seat.

CAUSE

Assembly error in a limited production period at production site in Turkey.

REMEDY

Check whether the stop (fixate stop) is installed and retrofit if necessary.

MEASURE TYPE

The scope of work is carried out as part of a recall (RC).

REPLACEMENT PARTS REQUIRED

Quantity	Designation	Number	Comment
1	ZB locking device (fixate stop)	A 045 910 00 61	

OPERATION TEXTS

Operation no.	Operation text	Working time/h	Comment
12-2541	Check stop on driver’s seat	0.1	
12-2542	Install stop on driver's seat (after check)	0.2	Link to 12-2541

The times apply for work at an hourly rate.

DEFECT NUMBER

Defect no.: **Designation**

9190174

CODEWORD

9110T25327

INTRODUCTION OF MODIFICATIONS INTO SERIES PRODUCTION

25.01.2025

WARRANTY AND GOODWILL SETTLEMENTS

RC field measure type: 100% of costs will be assumed.

BUS/MAC-C

pp.

Markus Fischer

BUS/MCC-O

pp.

Sabine Stephan

Attachments

- →: [Installation instructions](#)

This document may contain confidential information. Distribution outside the production plant's distribution list is not permitted.

For information only. Subject to ongoing technical development. Not subject to the amendment service.

DAIMLER TRUCK

Daimler Buses

91.10T25327A - Coach, **Fixate-Stop stop not installed** on backrest of ISRI driver's seat delivery package

Recall



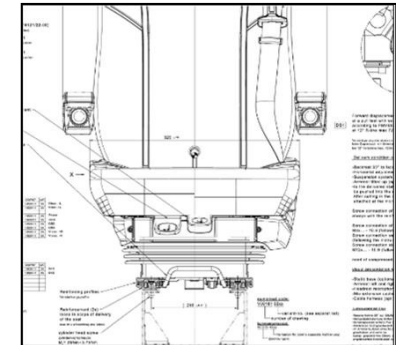
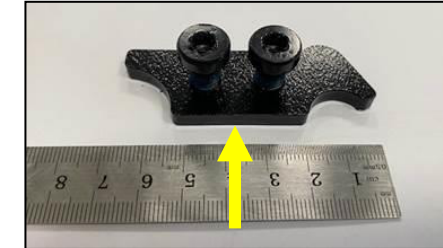
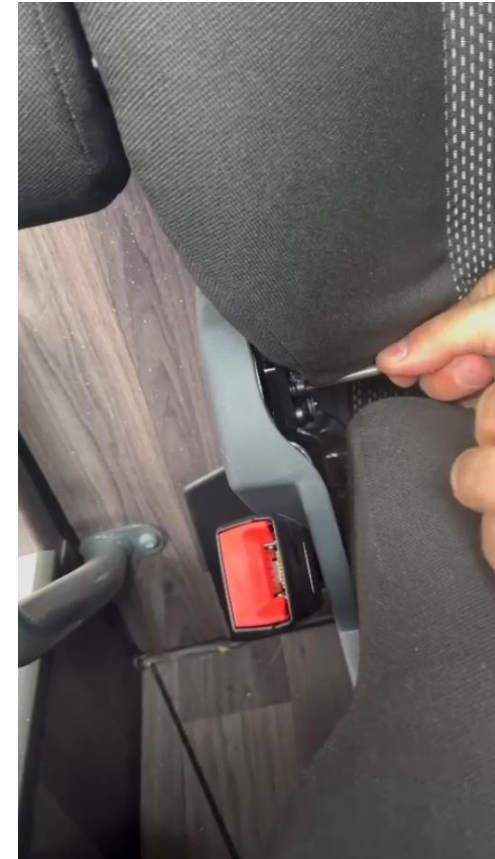
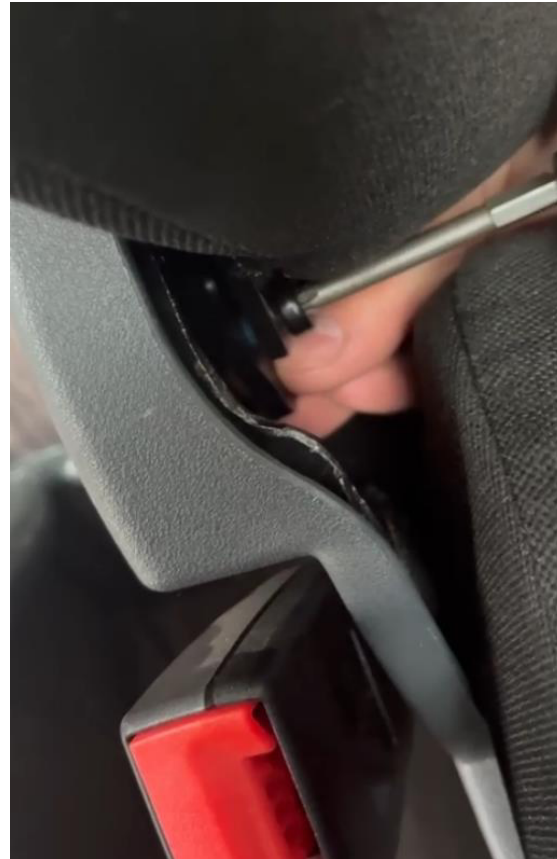
OMNIPLUS

BUSSTORE

Retrofit solution for recall

Fixate-Stop stop not installed on backrest of ISRI driver's seat delivery package

RETROFITTING



X
displayed without covers and seatframe
dargestellt ohne Abdeckungen und Sitzrahmen

- Fixate stop
loose in scope of delivery by seats without cover,
mounted by seats with cover
- Anschlag
beim Sitz ohne Bezug lose im Lieferumfang enthalten,
beim Sitz mit Bezug montiert
- Screw M₄×22Nm ±2Nm
loose in scope of delivery by seats without cover,
mounted by seats with cover
- Schraube M₄×22Nm ±2Nm
beim Sitz ohne Bezug lose im Lieferumfang enthalten,
beim Sitz mit Bezug montiert

Torque: 22 NM ± 2Nm

Pay attention to the correct orientation of the component!