



Safety Recall Action Notice 630 Issue 1 - 03.2025

Subject: Rear Direction Indicator Replacement			
Bulletin Number	Models Affected	VIN Range	Markets Affected
630	Speed Twin 1200 and Speed Twin 1200 RS	From VIN CD0066 to CH2405	United States of America and Canada Markets Only
	Speed Twin 900	From VIN CD4679 to CH4407	

Background Information

Dealers are requested to replace the rear direction indicators as described in the procedure below.

Customer Contact Instructions

NOTICE

STOP DELIVERY OF AFFECTED MOTORCYCLES IMMEDIATELY.

DO NOT deliver a motorcycle affected by this Safety Recall Action Notice to a customer until you have completed, or confirmed completion of, the procedures described in this Safety Recall Action Notice.

Delivering a motorcycle subject to an outstanding Safety Recall Action Notice may contravene local or national laws in your market, territory or country.

Triumph subsidiaries and distributors must instigate a Safety Recall Action in their country in accordance with the national recall code of practice. For vehicles in dealer stock, the safety recall MUST be actioned before delivery to the customer.

Dealers are to prioritise repair of customer owned motorcycles before any unsold motorcycles.

Identification of Affected Motorcycles

Speed Twin 900, Speed Twin 1200 and Speed Twin 1200 RS models in the above VIN range.

NOTICE

Some affected motorcycles listed in the VIN range will have been reworked by Triumph prior to their release from the factory.

Unmodified motorcycles can be identified by checking the 'VIN Enquiry' on www.triumphonline.net.

Warranty Claim Instructions

Bulletin Number	Model	Fault Code	Repair Code	Description	Repair Allowance	Time
630	Speed Twin 1200 and Speed Twin 1200 RS	027001930	99630	SB630 Remove and Replace Rear Indicators	0.25 Hrs	

Bulletin Number	Model	Fault Code	Repair Code	Description	Repair Time Allowance
630	Speed Twin 900	027001930	99630	SB630 Remove and Replace Rear Indicators	0.36 Hrs

Genuine Parts Information

Bulletin Number	Models	Part Number	Description	Quantity
630	Speed Twin 1200 and Speed Twin 1200 RS	T2701688	Rework Kit, US Indicator Consisting of: Indicator, LED, US Amber - Qty 2 Cable Tie - Qty 1 Cable Tie Holder - Qty 1	1
630	Speed Twin 900	T2701694	Rework Kit, US Indicator Consisting of: Indicator, LED, US Amber - Qty 2 Screw, But/Hd, M5 x 0.8 x 14, Slv, Enc - Qty 2	1

Parts Ordering Instructions

For Triumph Subsidiary and Overseas Distributor dealers using Triumph Warranty On-Line with Parts Auto Ordering Flag switched on: Order all repair parts by submitting a New Prior through the Warranty On-Line system. Entering the above repair code in a New Prior will automatically add the parts required and labour times for this Safety Recall Action Notice.

For Overseas Distributor dealers NOT using Triumph Warranty On-Line or for Overseas Distributor dealers using Triumph Warranty On-Line with Parts Auto Ordering Flag switched off: Orders should be placed using the normal parts ordering procedure.

Genuine Parts Return

Dealer to retain parts for 90 days. All parts must be stored in a secure, non-public accessed area and correctly identified with a completed warranty label. Thereafter the parts must be rendered unusable prior to scrapping.

Other Instructions

Once completed, please mark the Service Record Book that the requirements of this Safety Recall Action Notice have been complied with.

Before returning the motorcycle to the customer, check that all electronic control modules have the latest latest calibrations installed using the latest version of the Triumph Diagnostic Tool. Download any updates as necessary.

Replace the Rear Direction Indicators

! WARNING

Make sure that the motorcycle is stabilised and adequately supported.

Do not support the motorcycle on any ancillary component, the exhaust system or any other non-structural parts of the motorcycle frame.

A correctly supported motorcycle will help prevent it from falling.

Failure to follow the advice above could result in serious injury or death.

! WARNING

Make sure that the battery terminals do not touch the motorcycle frame.

This may cause a short circuit or spark which would ignite battery gases.

Failure to follow the advice above could result in serious injury or death.

! WARNING

Before disconnecting the battery or removing a fuse for any reason, note and record the riding modes settings.

Once the fuse has been refitted or the battery reconnected, the riding modes should be reset as noted.

Failure to reset the motorcycle riding modes settings and subsequently being ridden, may cause loss of motorcycle control which could result in serious injury or death.

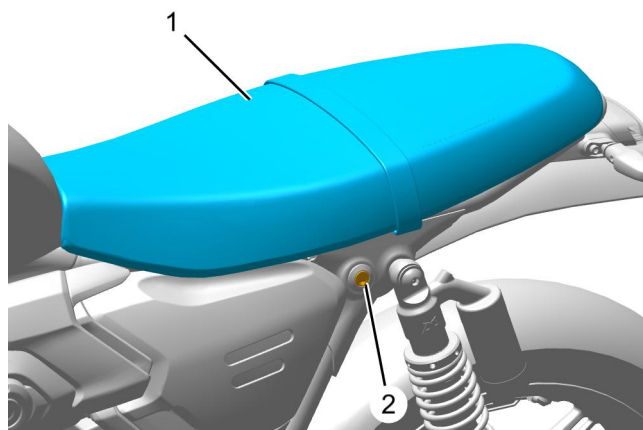
NOTICE

Whilst the instructions below include battery disconnection and reconnection, it is recognised that this is not always necessary. Please follow the instructions accordingly.

For Speed Twin 1200 models, follow the instructions from Safety Recall Action Notice 630 - Rear Direction Indicator Replacement, page 3. For Speed Twin 900 models, follow the instructions from Safety Recall Action Notice 630 - Rear Direction Indicator Replacement, page 11.

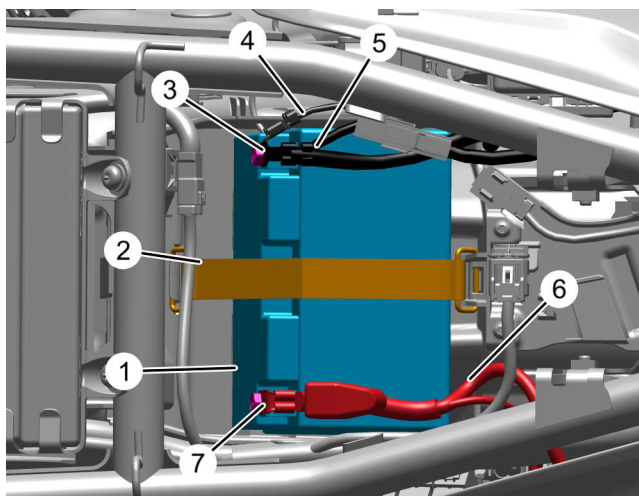
Speed Twin 1200 and Speed Twin 1200 RS

1. Insert the ignition key into the seat lock and turn it anticlockwise while pressing down on the rear of the seat.
2. Lift the seat up from the back and slide rearwards for complete removal from the motorcycle.



1. **Seat**
2. **Seat lock**

3. Disconnect the ABS ground and battery negative (black) leads.
4. Slide the positive (+) terminal protective cap to gain access to the fixing.
5. Disconnect the battery positive (red) lead.

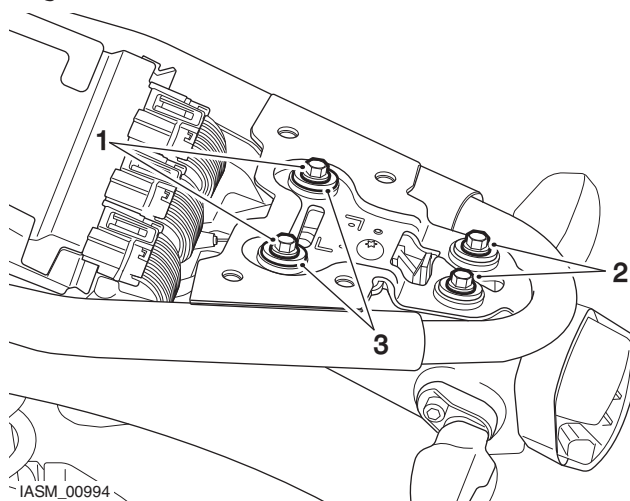


1. **Battery**
2. **Battery strap**
3. **Negative (-) terminal**
4. **ABS ground lead**
5. **Negative (-) lead**
6. **Positive (+) lead**
7. **Positive (+) terminal**

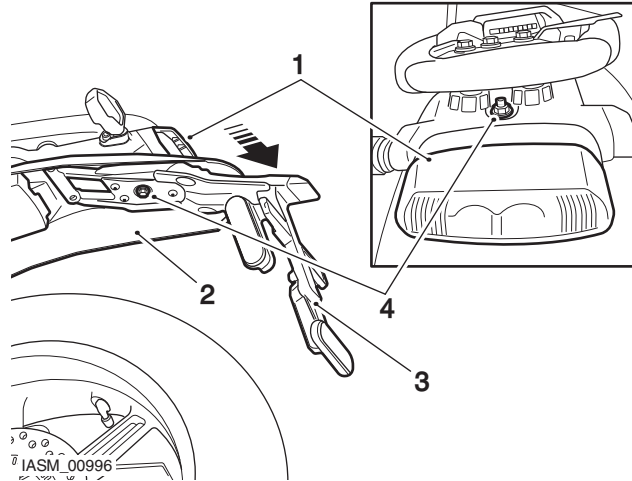
NOTICE

Two flanged sleeves are fitted to the underside of the front fixings for the rear licence plate hanger, in between the engine ECM tray and the rear mudguard. These will be removed when the rear mudguard is removed.

6. Remove the two front rear licence plate hanger fixings, nuts and washers.
7. Remove the two rear fixings.



1. **Front fixings**
2. **Rear fixings**
3. **Washers**
8. Lower the rear light assembly and rear mudguard.
9. Support the rear licence plate hanger assembly.
10. Remove the rear fixing and nut.



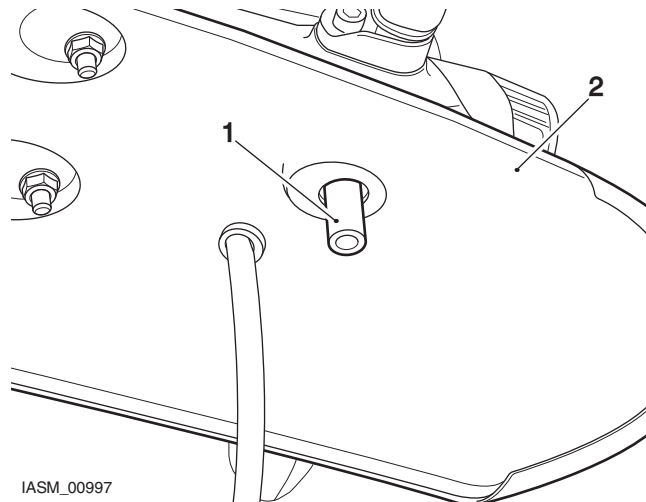
- 1. Rear light assembly
- 2. Rear mudguard
- 3. Rear licence plate hanger assembly
- 4. Rear fixing

11. Lower the rear licence plate hanger assembly.

NOTICE

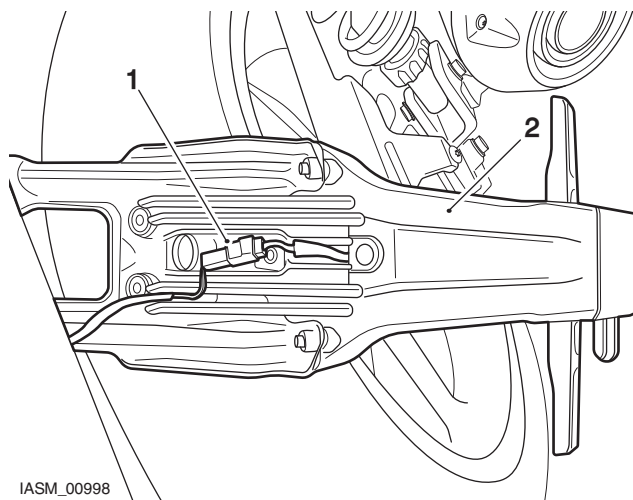
Note the routing of the rear licence plate light harness for installation.

12. Collect the spacer from the rear fixing.



- 1. Spacer
- 2. Rear mudguard

- 13. Disconnect the rear licence plate light electrical connector.
- 14. Remove the rear licence plate hanger assembly.



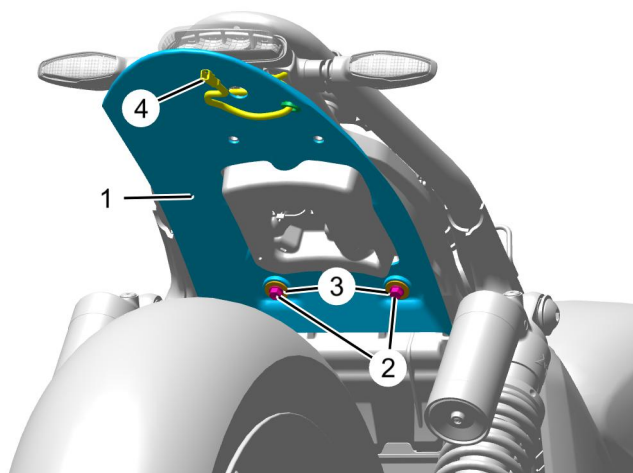
IASM_00998

- 1. Electrical connector
- 2. Rear licence plate hanger

NOTICE

Two flanged sleeves are fitted in between the rear mudguard and engine ECM tray for the rear licence plate hanger front fixings. These will be removed when removing the rear mudguard. Note their position for installation.

- 15. Remove the two front fixings and flanged sleeves from the underside of the rear mudguard.



- 1. Rear mudguard
- 2. Fixings
- 3. Flanged sleeves
- 4. Licence plate light harness

NOTICE

Note the routing of the rear licence plate light harness for installation.

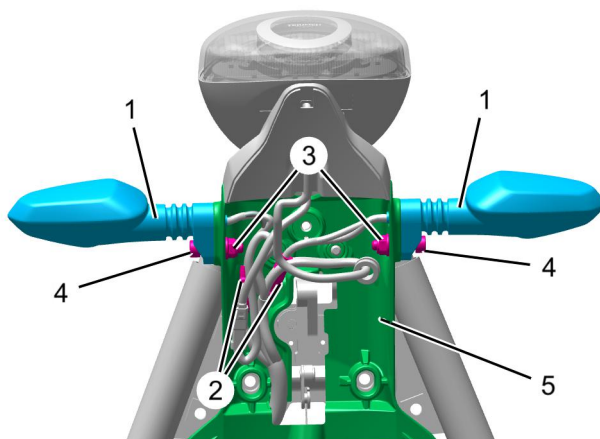
- 16. Lower the rear mudguard and route the rear licence plate light harness through the mudguard.
- 17. Remove the rear mudguard and collect the two flanged sleeves fitted through the engine ECM tray.

NOTICE

Note the routing of the rear indicator harnesses for installation.

- 18. Disconnect the rear indicator electrical connector.

19. Remove the fixings and nuts that attach the rear indicator assemblies to the rear mudguard assembly and remove the rear indicators.



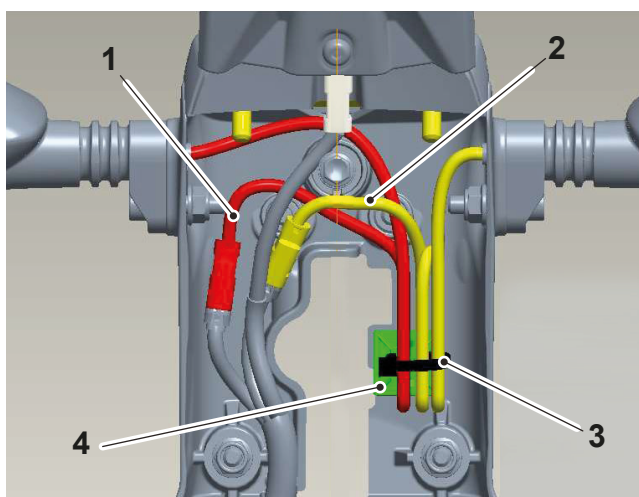
1. **Rear indicator assembly**
2. **Electrical connector**
3. **Nut**
4. **Fixing**
5. **Rear mudguard assembly**

20. Collect the direction indicators from the parts kit.
21. Position the rear indicators to the rear mudguard assembly.
22. Install the fixings and nuts that attach the rear indicator assemblies and tighten to **5 Nm**.

NOTICE

The left hand indicator harness doubles back once on itself, the right hand indicator harness doubles back twice.

23. Install the cable tie holder from the parts kit to the engine ECM tray.
24. Connect the rear indicator electrical connectors.
25. Secure the indicator harnesses as shown with the cable tie from the parts kit.



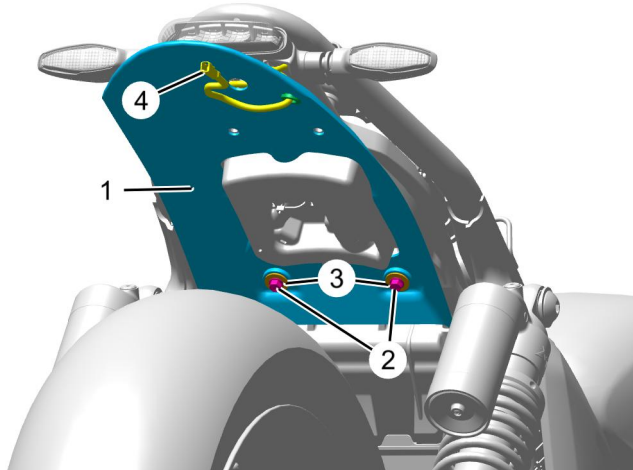
1. **Left hand side rear direct indicator harness**
2. **Right hand side rear direct indicator harness**
3. **Cable tie**
4. **Cable tie holder**

26. Route the rear licence plate light harness through the mudguard and raise the rear mudguard.
27. Position the rear mudguard.

NOTICE

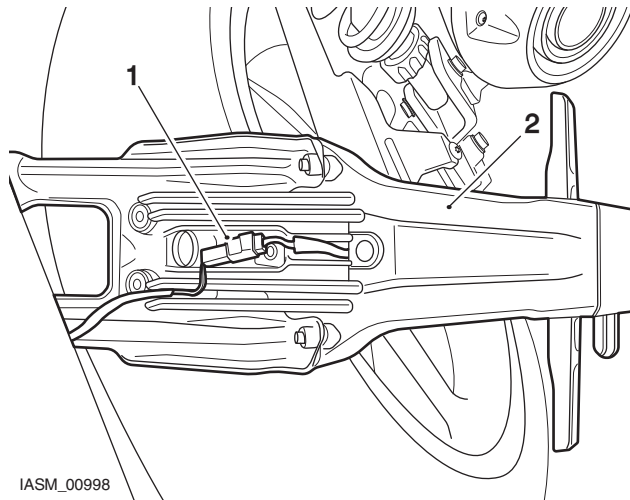
Two flanged sleeves are fitted through the engine ECM tray for the rear licence plate hanger front fixings. These must be fitted before the rear mudguard is secured,

28. Install the two long flanged sleeves through the engine ECM tray.
29. Install the flanged sleeves and two front fixings to the underside of the rear mudguard, and tighten to **6 Nm**.



1. **Rear mudguard**
2. **Fixings**
3. **Flanged sleeves**
4. **Licence plate light harness**

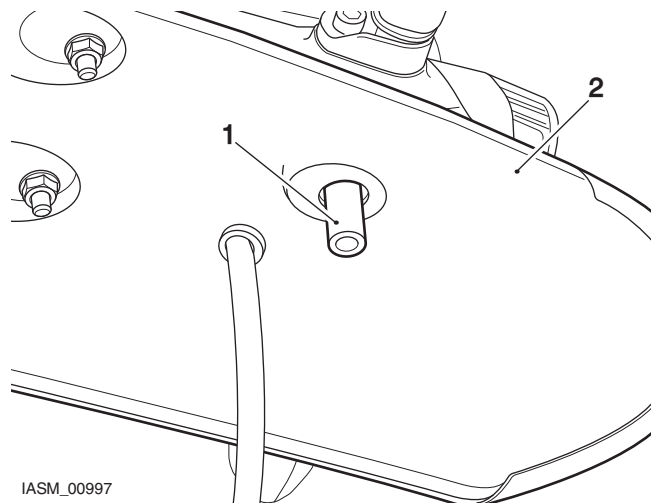
30. Connect the harness to the rear licence plate light electrical connector.



IASM_00998

1. **Harness and electrical connector**
2. **Rear licence plate hanger**

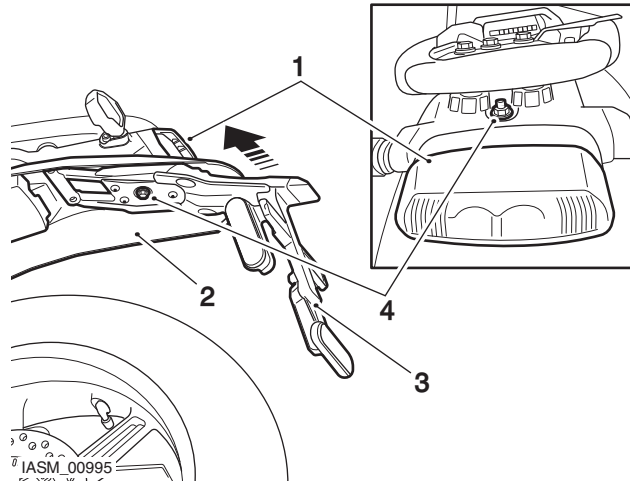
31. Install the spacer for the rear fixing.



IASM_00997

- 1. Spacer
- 2. Rear mudguard

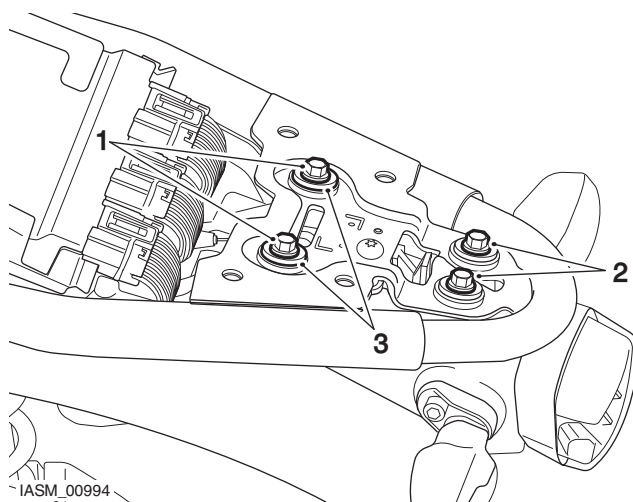
- 32. Align the rear licence plate hanger assembly to the motorcycle.
- 33. Install the rear fixing and nut, and tighten to **6 Nm**.
- 34. Raise the rear light assembly and rear mudguard.



IASM_00995

- 1. Rear light assembly
- 2. Rear mudguard
- 3. Rear licence plate hanger assembly
- 4. Rear fixing

- 35. Install the two front fixings and washers and tighten to **6 Nm**.
- 36. Tighten the two rear fixings to **6 Nm**.

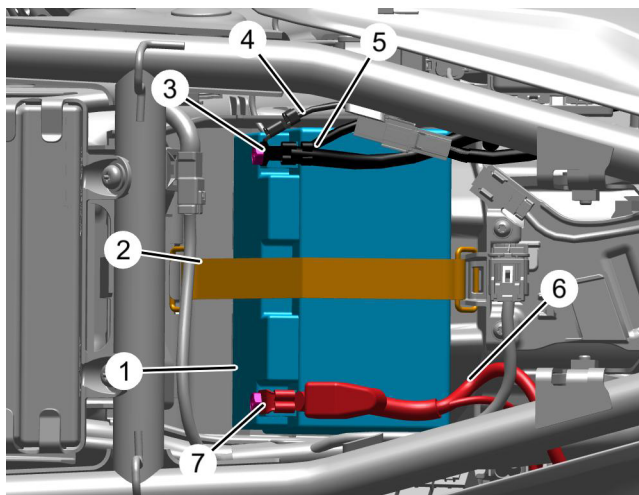


1. Front fixings
2. Rear fixings
3. Washers

NOTICE

The instructions shown must be followed when fitting the battery.
 When fitting a battery, always make sure the harnesses are routed the as shown.
 Incorrect battery fitting may lead to engine fault codes or failure to start the engine.

37. Reconnect the battery, positive (red) lead first and then the negative and ABS ground (black) leads.
38. Tighten the battery terminals to **4.5 Nm**.
39. Apply a light coat of grease to the terminals to prevent corrosion.
40. Cover the positive terminal with the protective cap.



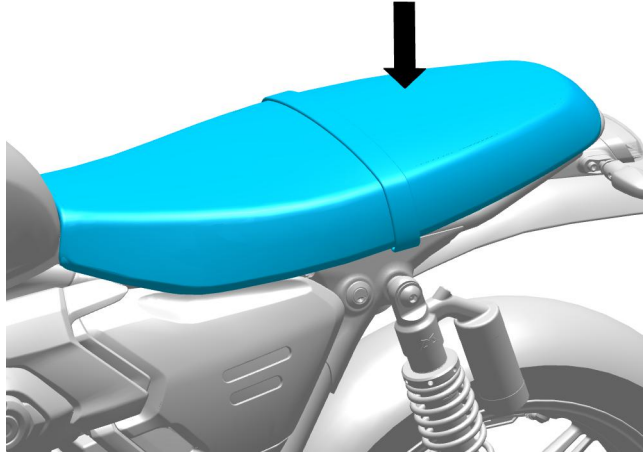
1. Battery
2. Battery strap
3. Negative (-) terminal
4. ABS ground lead
5. Negative (-) lead
6. Positive (+) lead
7. Positive (+) terminal

41. Make sure that the rear direction indicators operate correctly.
42. Engage the seat tongue under the fuel tank.

NOTICE

An audible click can be heard when the seat is correctly engaged in the lock.

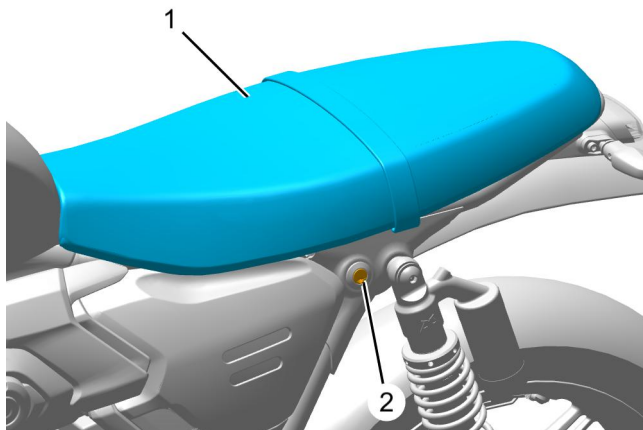
43. Press firmly down in the rear of the seat to engage the seat lock.



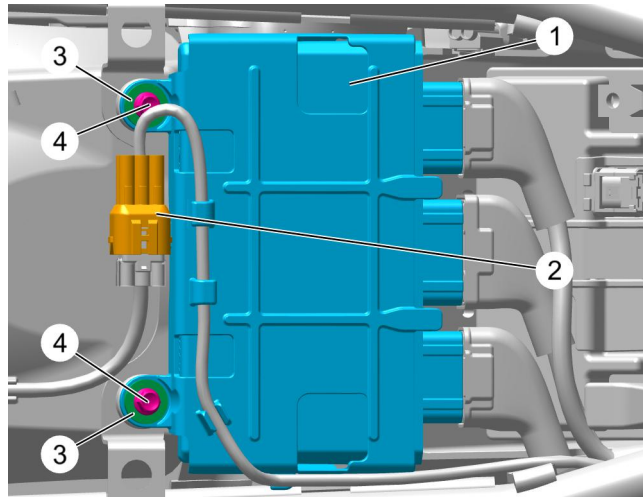
Seat installation

Speed Twin 900

1. Insert the ignition key into the seat lock and turn it anticlockwise while pressing down on the rear of the seat.
2. Lift the seat up from the back and slide rearwards for complete removal from the motorcycle.

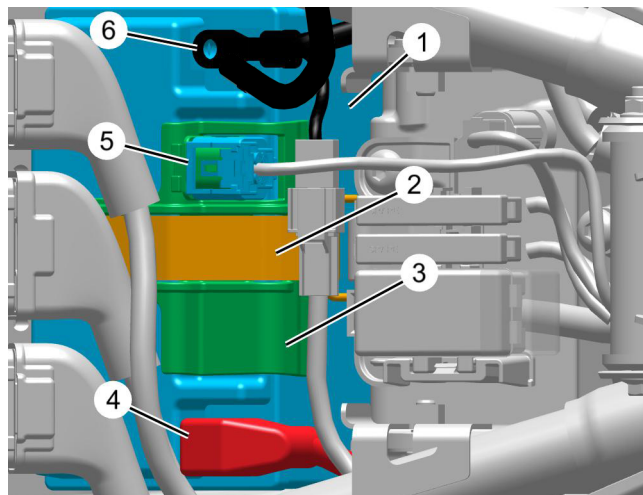


1. **Seat**
2. **Seat lock**
3. Remove the fixings securing the engine ECM bracket to the frame and collect the flanged sleeves.
4. Release the rear lights harness from the clips on the engine ECM bracket.
5. Release the rear lights electrical connector from its lug on the engine ECM bracket.
6. Position the engine ECM to one side.



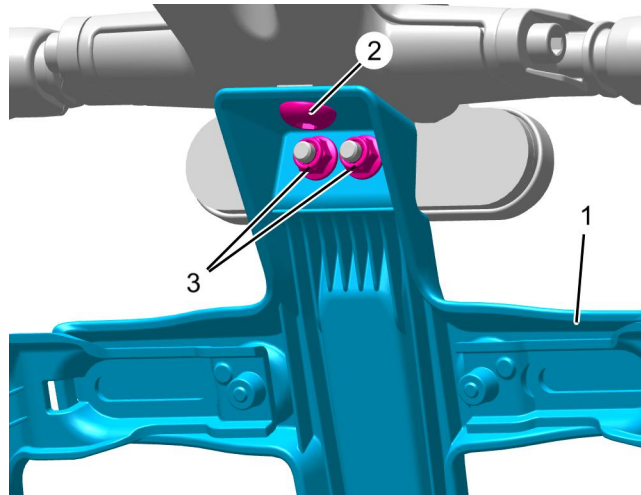
1. **Engine ECM**
2. **Rear lights electrical connector**
3. **Flanged sleeves**
4. **Engine ECM fixings**

7. Disconnect the ABS ground and battery negative (black) leads.
8. Slide the positive (+) terminal protective cap to gain access to the fixing.
9. Disconnect the battery positive (red) lead.



1. **Battery**
2. **Battery strap**
3. **Diagnostic connector moulding**
4. **Positive (+) terminal protective cap**
5. **Diagnostic connector**
6. **Negative (-) terminal**

10. Remove the two nuts and the upper fixing securing the rear licence plate hanger. Discard the fixing and retain the nuts for reuse.

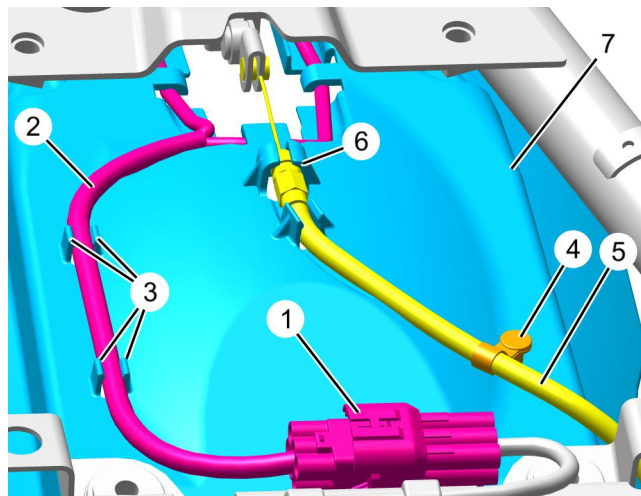


1. Licence plate hanger
2. Upper fixing
3. Nuts

NOTICE

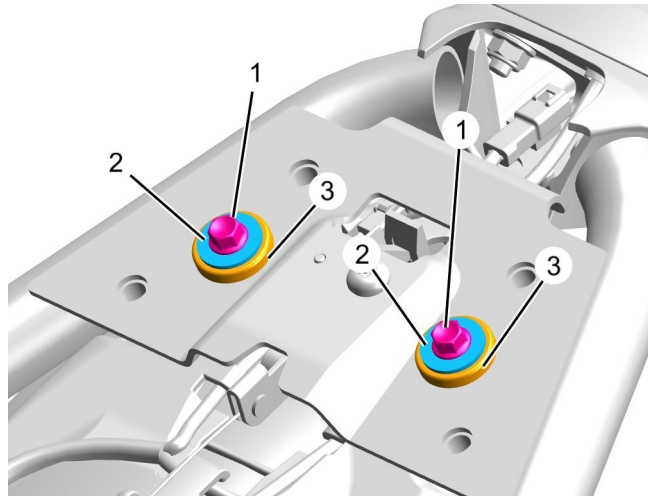
Note the routing of electrical harnesses and the seat lock cable for installation.

11. Disconnect the electrical connector and detach the harness from its retaining clips.
12. Detach the seat lock cable retaining clip from the rear mudguard.
13. Detach the seat lock cable from its locating feature on the rear mudguard.



1. Electrical connector
2. Harness
3. Retaining clips
4. Retaining clip
5. Seat lock cable
6. Locating feature
7. Rear mudguard

14. Support the mudguard assembly.
15. Remove the fixings and collect the flanged sleeves.



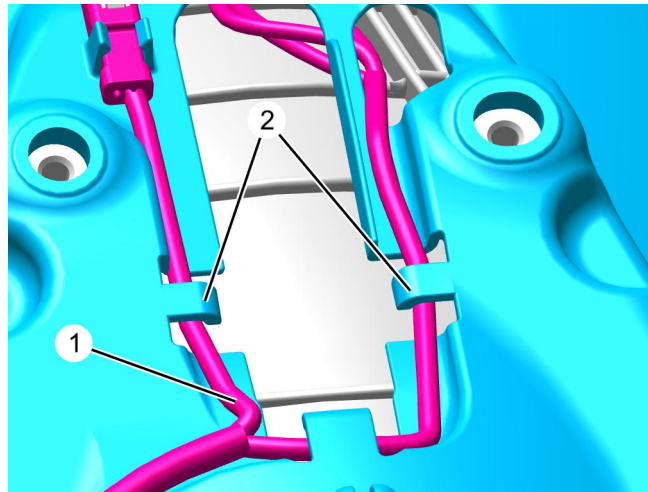
1. Fixings

2. Flanged sleeves

3. Grommets

16. Remove the rear mudguard assembly.

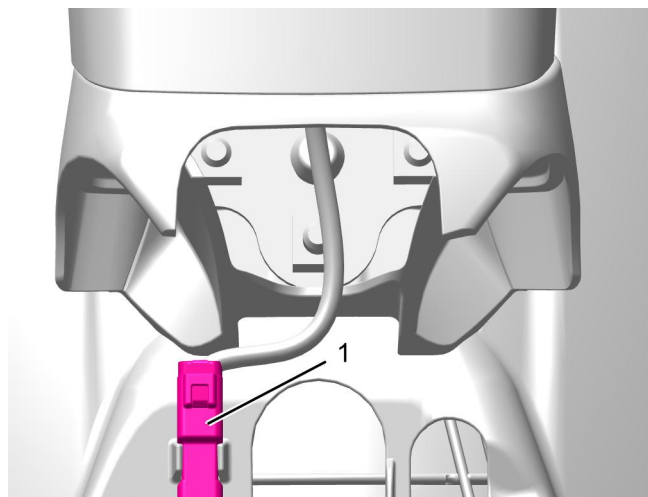
17. Remove the harness from the locating features on the rear mudguard assembly.



1. Harness

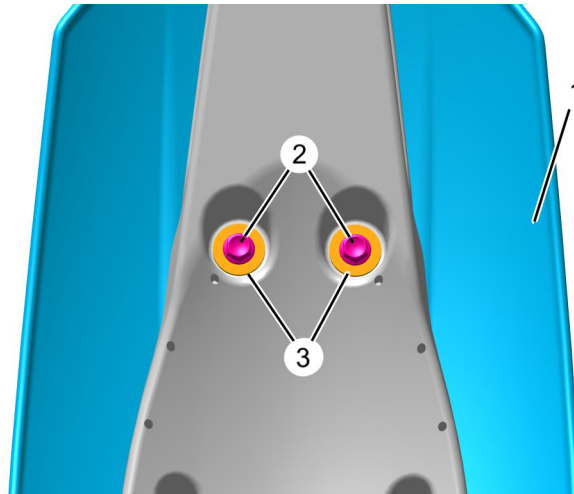
2. Locating features

18. Remove the rear light electrical connector from the locating feature on the rear mudguard and disconnect the electrical connector.



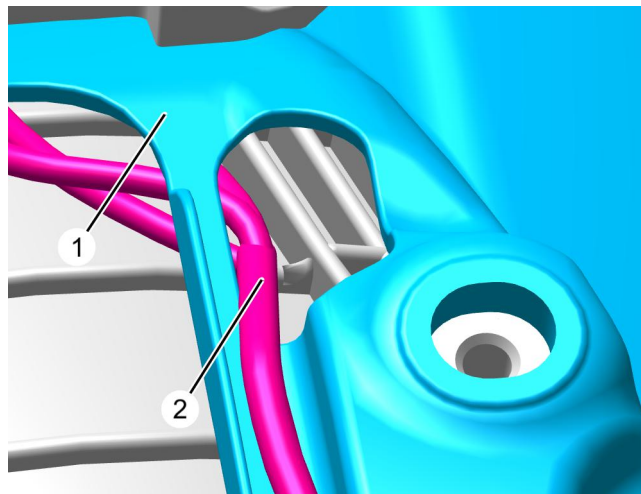
1. Rear light electrical connector

19. Remove the fixings and collect the flanged sleeves.



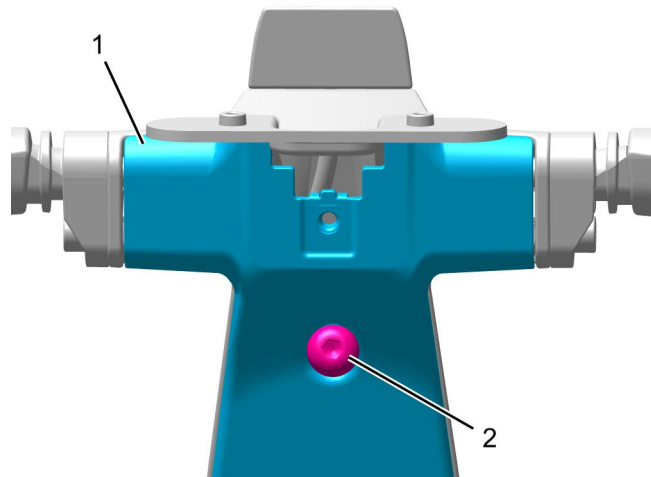
- 1. **Rear mudguard**
- 2. **Fixings**
- 3. **Flanged sleeves**

20. Separate the mudguard from the licence plate hanger assembly and route the harness through the opening in the mudguard.



- 1. **Rear mudguard**
- 2. **Harness**

21. Remove and discard the fixing and remove the licence plate support lower moulding.

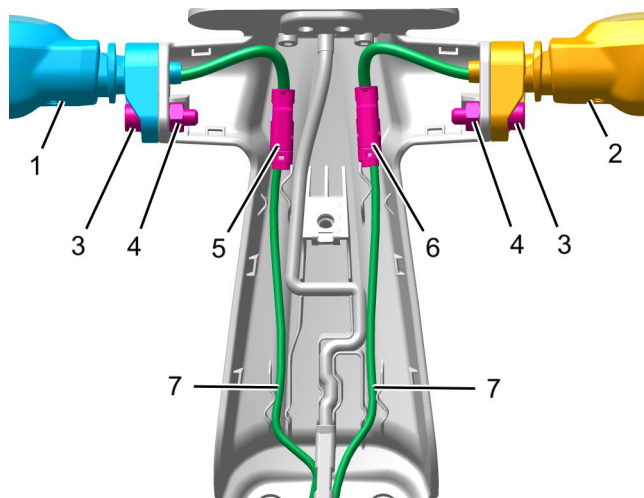


1. Licence plate support lower moulding
2. Fixing

NOTICE

Note the position and orientation of the indicator electrical harnesses for installation.

22. Disconnect the direction indicator electrical connectors.
23. Remove the fixings and collect the locknuts.
24. Remove the direction indicators.



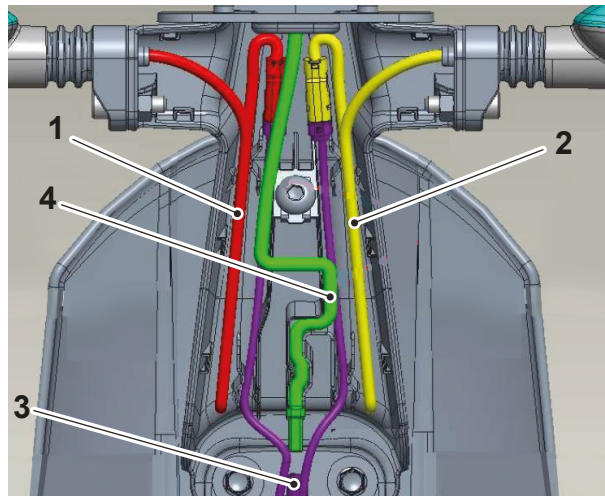
1. Left hand direction indicator
2. Right hand direction indicator
3. Fixings
4. Lock nuts
5. Left hand direction indicator electrical connector
6. Right hand direction indicator electrical connector
7. Direction indicator harnesses

25. Collect the direction indicators from the parts kit.
26. Position the direction indicator to the licence plate support upper moulding.
27. Install the fixings and lock nuts. Hold the lock nuts and tighten the fixings to **5 Nm**.

NOTICE

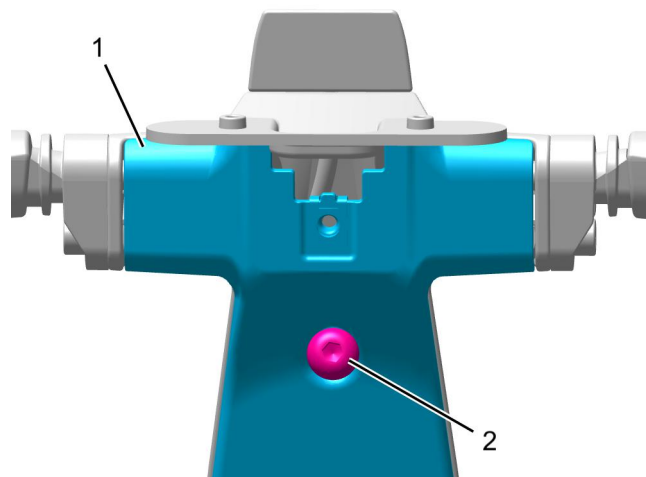
Both the left and right rear indicator harnesses double back on themselves within the moulding. The rear subharness is routed underneath the rear licence plate light harness.

28. Connect the direction indicator electrical connectors and position the harnesses as shown in the image below.



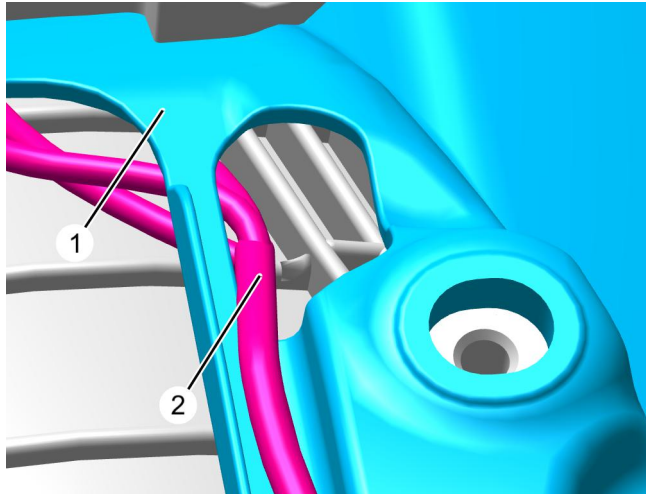
1. **Left hand direction indicator harness**
2. **Right hand direction indicator harness**
3. **Rear subharness**
4. **Rear licence plate light harness**

29. Position the licence plate support lower moulding to the upper moulding and install the new fixing from the parts kit.
30. Tighten the fixing to **3 Nm**.



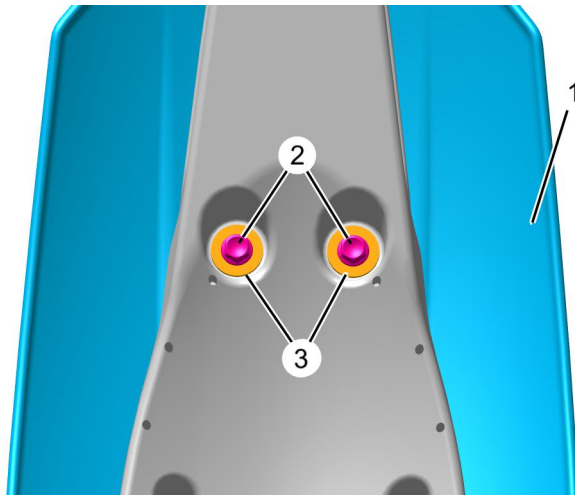
1. **Licence plate support lower moulding**
2. **Fixing**

31. Position the licence plate hanger assembly to the mudguard and route the harness through the opening in the mudguard as shown in the image below.



- 1. Rear mudguard
- 2. Harness

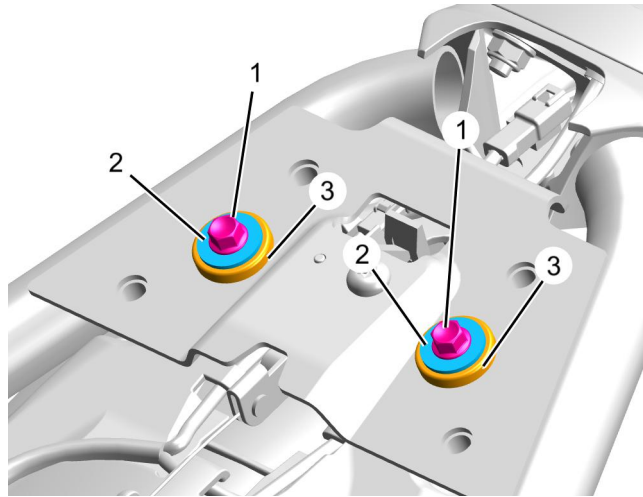
32. Install the flanged sleeves and fixings. Tighten the fixings to **8 Nm**.



- 1. Rear mudguard
- 2. Fixings
- 3. Flanged sleeves

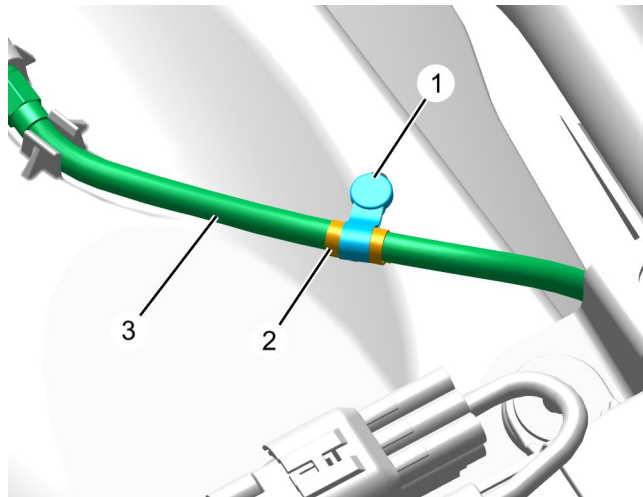
33. Position the mudguard assembly to the frame.

34. Install the flanged sleeves and fixings. Tighten the fixings to **8 Nm**.



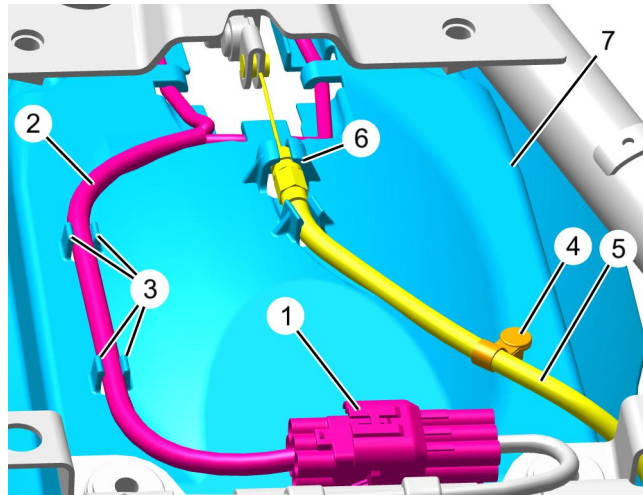
1. **Fixings**
2. **Flanged sleeves**
3. **Grommets**

35. Position the cable clip to the yellow tape on the seat lock cable as shown in the image below.



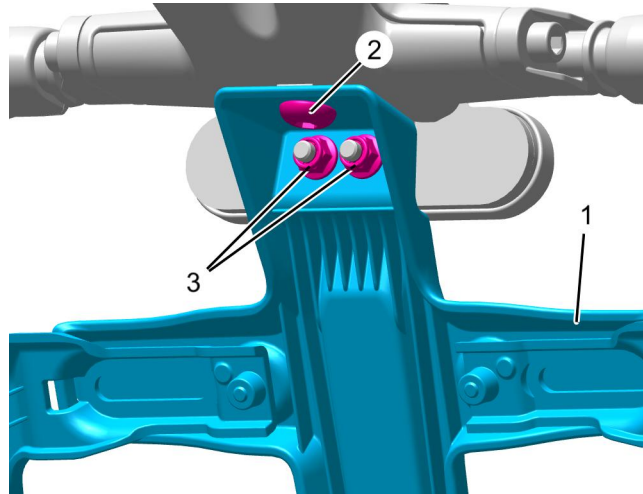
1. **Cable clip**
2. **Yellow tape**
3. **Seat lock cable**

36. Install the seat lock cable into the locating feature.
37. Install the cable clip into the mudguard.
38. Connect the electrical connector and secure the harness into the harness clips on the mudguard.



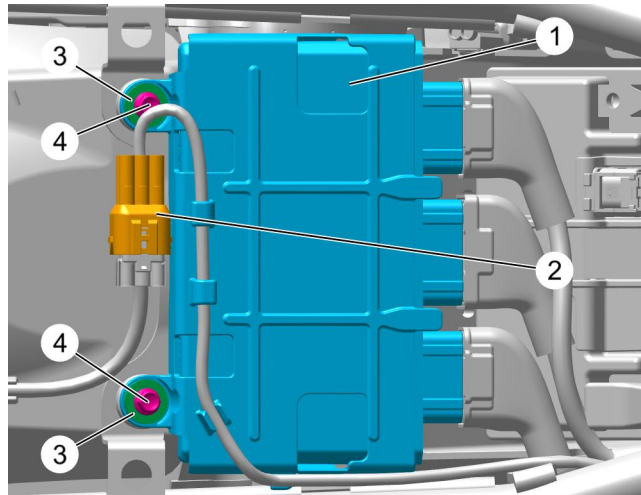
- 1. Electrical connector
- 2. Harness
- 3. Retaining clips
- 4. Retaining clip
- 5. Seat lock cable
- 6. Locating feature
- 7. Rear mudguard

- 39. Position the licence plate hanger and install the new upper fixing from the parts kit. Tighten the upper fixing to **3 Nm**.
- 40. Install the nuts and tighten to **5 Nm**.



- 1. Licence plate hanger
- 2. Upper fixing
- 3. Nuts

- 41. Position the engine ECM into the engine ECM bracket.
- 42. Position the engine ECM bracket to the frame and fit the flanged sleeves.
- 43. Secure the engine ECM bracket with the fixings and tighten to **8 Nm**.
- 44. Attach the rear lights electrical connector onto its locating lug on the engine ECM bracket.

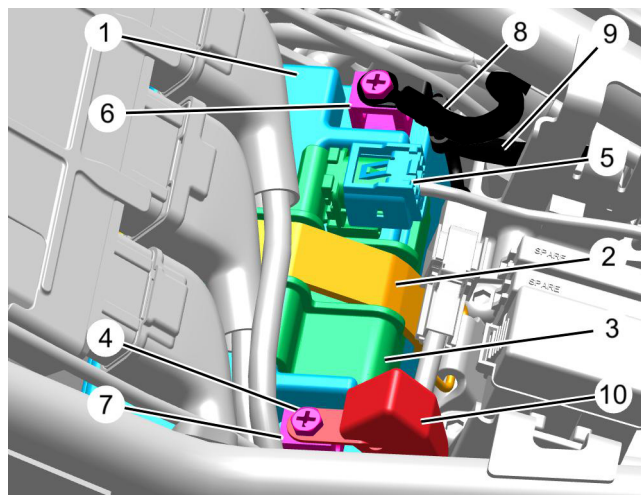


1. Engine ECM assembly
2. Rear lights electrical connector
3. Flanged sleeves
4. Engine ECM fixings

NOTICE

The instructions shown must be followed when fitting the battery.
 When fitting a battery, always make sure the harnesses are routed the as shown.
 Incorrect battery fitting may lead to engine fault codes or failure to start the engine.

45. Reconnect the battery, positive (red) lead first and then the negative and ABS ground (black) leads.
46. Tighten the battery terminals to **4.5 Nm**.
47. Apply a light coat of grease to the terminals to prevent corrosion.
48. Cover the positive terminal with the protective cap.



1. Battery
2. Battery strap
3. Diagnostic connector moulding
4. Positive (+) lead
5. Diagnostic connector
6. Negative (-) terminal
7. Positive (+) terminal
8. ABS ground lead
9. Negative (-) lead
10. Positive (+) terminal protective cap

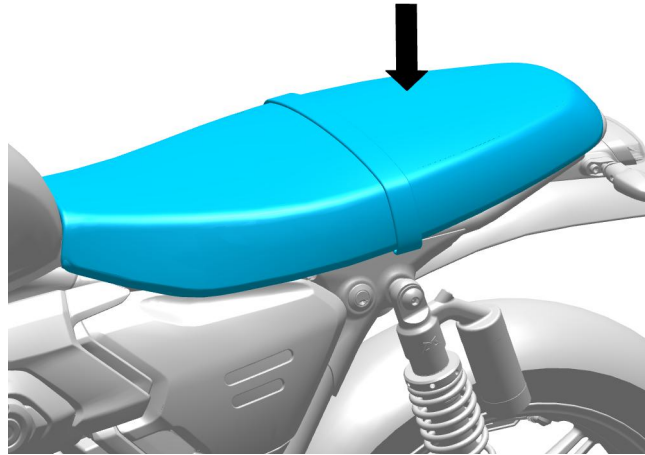
49. Download the latest calibration for this model using the Triumph Diagnostic Tool.

-
50. Make sure that the rear direction indicators operate correctly.
 51. Engage the seat tongue under the fuel tank.

NOTICE

An audible click can be heard when the seat is correctly engaged in the lock.

52. Press firmly down in the rear of the seat to engage the seat lock.



Seat installation