


## RECALL 25V112 / 2025-095 REMEDY INSTRUCTIONS

 <b>FOREST RIVER</b>	Make(s): CATALINA Model(s): ACAT35FME Model Year(s): 2025	Repair Code: RC-062-01-00-004689 Allotted Time: 2.00 HRS. Inspection Code: N/A Allotted Time: N/A
	Concern: The Gross Vehicle Weight Rating "GVWR" printed on the FED Tag may be rated higher than the couplers load rating.	Photo(s) Required: NO Prior Authorization Required: YES Part(s) Kit Number: F100714090 Part(s) Return: FIELD DESTROY

Turn off LP Gas at LPG Tank(s). Disconnect the vehicles' battery Positive and Negative, disconnect any House battery(s) Positive and Negative, if equipped with a generator ensure it is off and lastly, ensure the vehicle is disconnected from shore power. Block any tires/wheels to prevent the vehicle from rolling. Failure to do so may result in electrocution, fire or other personal injury, property damage and/or death.

**PLEASE REFERENCE THE INCLUDED INSTRUCTIONS**

THESE WILL ASSIST ON HOW TO REMOVE THE INSTALLED 14,000 LBS. RATED COUPLER WITH A 21,000 LBS. COUPLER.

ORDER KIT: F100714090 – 21,000 LBS. COUPLER



ENSURE THE UNIT IS ON LEVEL GROUND BEFORE SUPPORTING THE UNIT AND REMOVING THE TONGUE JACK. WHEEL CHOCKS ARE ALSO RECOMMENDED.

**STEP 1:** SUPPORT THE UNIT WITH TWO JACK STANDS UNDER THE FRONT CROSS-MEMBER OR THE A-FRAME OF THE CHASSIS.

**STEP 2:** RETRACT THE TONGUE JACK UNTIL THE WEIGHT OF THE RV IS TRANSFERRED TO THE JACK STANDS. REMOVE THE FOOTPAD FROM THE TONGUE JACK.

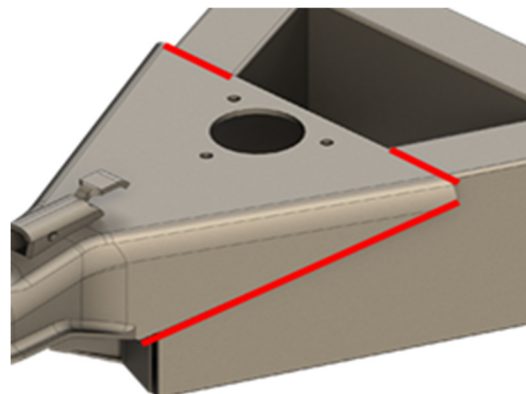
**STEP 3:** REMOVE THE (3) 3/8" BOLTS THAT SECURE THE JACK TO THE COUPLER (FIGURE 1), IF THE JACK IS AN ELECTRIC JACK, DISCONNECT THE WIRE AT THE BATTERY, LIFT THE JACK UP VERTICALLY AND REMOVE THE JACK. SET THE JACK ASIDE.

**STEP 4:** CUT THE EXISTING COUPLER WELDS INDICATED IN FIGURE 2 IN RED. USE CAUTION NOT TO DAMAGE THE A-FRAMES TUBES WHEN CUTTING THE WELDS. REMOVE THE ORIGINAL COUPLER.

Figure 1



Figure 2



**STEP 5:** USING A GRINDER, PREP THE A-FRAME FOR WELDING THE NEW COUPLER IN PLACE BY REMOVE ANY REMAINING WELD OR PAINT ON THE A-FRAME TUBES (FIGURE 3).

**STEP 6:** WELD THE REPLACEMENT COUPLER TO THE A-FRAME. WELD IN THE SAME LOCATIONS THAT THE ORIGINAL COUPLER WAS WELDED.

**STEP 7:** CLEAN THE A-FRAME TUBES AND COUPLER USING A SANDER IF NECESSARY.

**STEP 8:** PAINT BLACK WHERE NECESSARY.

**STEP 9:** REINSTALL TONGUE JACK, FOOT PAD, AND REWIRE IF NECESSARY.

Figure 3



Figure 4

