

ASAO – Check Rear Seat Belt Buckles and Rework if necessary (Stop Delivery / Recall Campaign)

Model Line: **911 (992)**

Model Year: **As of 2023 up to 2025**

Concerns: **Rear seat belt buckles**

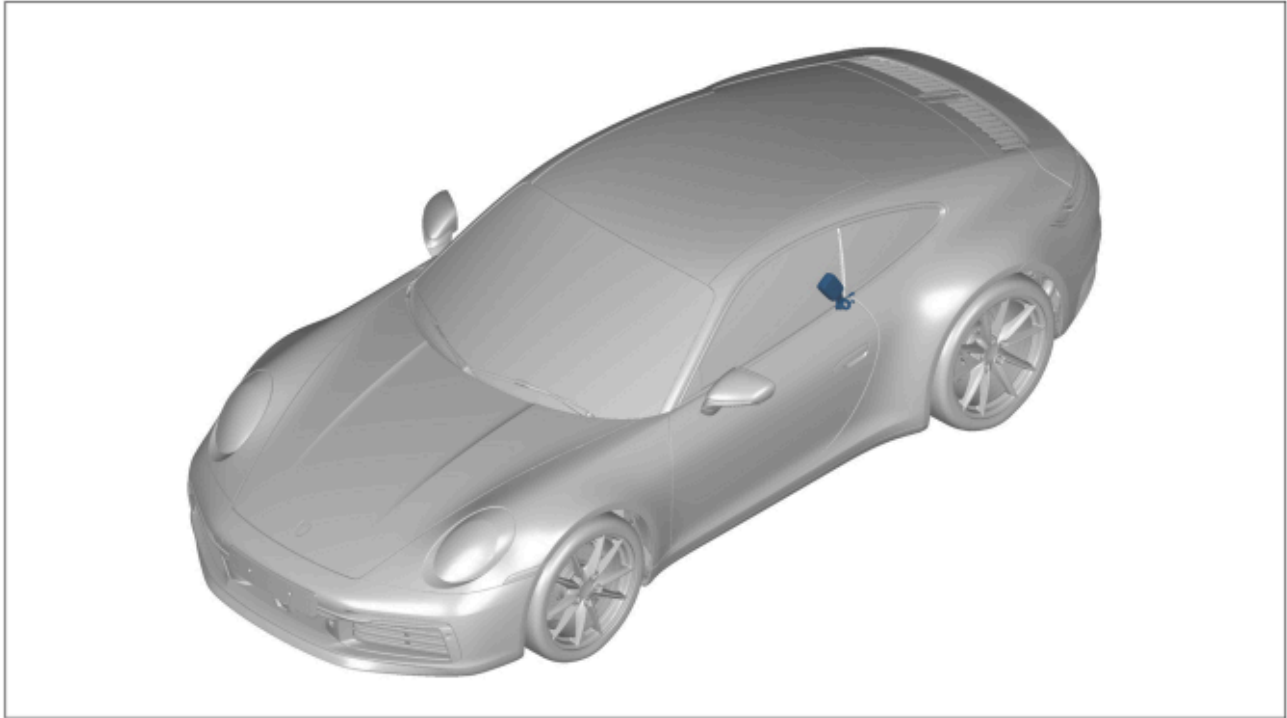
Cause: **Due to a process error in the production process, an aluminium butyl mat was incorrectly positioned and consequently the screw connection of the rear left and right seat belt buckle was potentially not designed according to the specifications.**

If this is the case, the correct screw connection of the seat belt buckle would not be ensured. In this case, it cannot be ruled out that the rear seat belt buckles will be loosened in the event of an accident or full braking. This could increase the associated risk of injury.

Action: Check rear seat belt buckles and rework if necessary.

Affected Vehicles: Only vehicles assigned to the campaign (see also PCSS Vehicle Information).

Installation
Position:



Installation position of rear seat belt buckle

Required parts and materials as needed



Information

No parts or materials are required to test the positioning of the rear aluminium butyl mat.

Parts Info:

Part No.	Designation – Location of use	Quantity
N 91026201	⇒ Hexagon collar nut – Rear seat belt buckle	2 pieces

Material:

Required materials as needed (usually already available in the Porsche Center):

- Clean, lint-free cloth*
- De-greasing cleaning agent (e.g. isopropanol)*

* For warranty processing, the **Part No. ASA00000001** with the "Consumables" designation can be invoiced as an **additional part** in the warranty claim. Maximum amount \$0.52

Required tools



Information

No tools are required to check the positioning of the rear aluminium butyl mat.

- Torque wrench, 6-50 Nm (4.5-37 ftlb.), e.g. **V.A.G 1331A - torque wrench, 6-50 Nm (4.5-37 ftlb.)**
- Commercial hot air gun, e.g. **VAS 1978/14A - hot air gun**

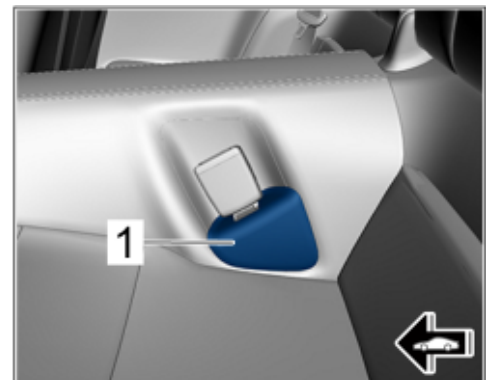
Checking rear seat belt buckles



Information

The procedure is shown as an example on the **left** side of the vehicle. The procedure on the right side is identical.

- Work Procedure:
- 1 Unclip cover on seat belt buckle ⇒ *Cover on seat belt buckle -1-*.
 - 2 Check aluminium butyl mat ⇒ *Checking rear seat belt buckle -1-* for correct position.



Cover on seat belt buckle



Information

The aluminium butyl mat must **not** be located below the seat belt buckle. Furthermore, there must be a **minimum distance of 10 mm / 0.39 in** from this.

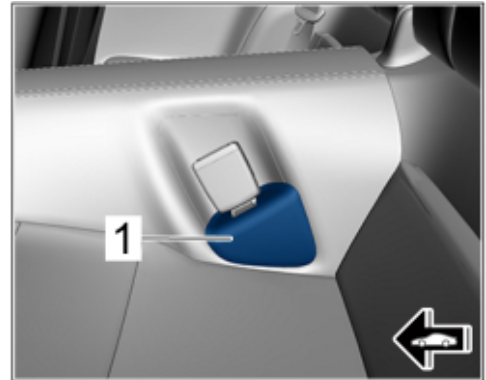


Checking rear seat belt buckle

Assessment		Action
(✓)	The aluminium butyl mat is not located below the seat belt buckle and complies with the minimum distance on both sides .	Continue with Step 3. [Warranty processing: Scope 1]
(✗)	The aluminium butyl mat is located below the seat belt buckle or does not comply with the minimum distance on one or both sides .	Continue ⇒ <i>Technical Information 'to rework the seat belt buckle'</i> One side: [Warranty processing: Scope 2] Both sides: [Warranty processing: Scope 3]

- 3 Perform photo documentation and upload the clearly identifiable pictures to the PCSS quality line with the relevant description of the affected side (e.g. Seat belt buckle_rear_left_VIN).

- 4 Position cover on seat belt buckle ⇒ *Cover on seat belt buckle -1-* and clip it in.
- 5 Enter the campaign in the Warranty and Maintenance Logbook.



Cover on seat belt buckle

Reworking the rear seat belt buckle



Information

The procedure is shown as an example on the **left** side of the vehicle. The procedure on the right side is identical.



Information

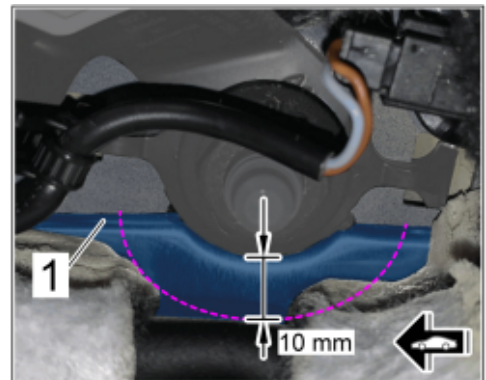
In order to ensure the correct fastening of the belt buckle, the aluminium butyl mat below must be cut free correspondingly with a distance of 10 mm/ 0.39 in.

The paintwork must not be damaged during machining of the aluminium butyl mat.

Work Procedure: 1 **Perform photo documentation and upload the clearly identifiable pictures to the PCSS quality line with the relevant description of the affected side (e.g. Seat belt buckle_rear_left_VIN).**

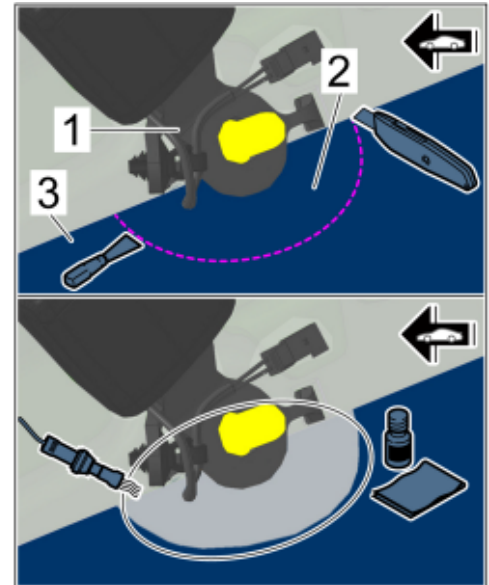
2 Mark fresh cut on aluminium butyl mat ⇒ *Fresh cut on aluminium butyl mat -1-* with suitable means.

3 Remove rear seat cushion.
⇒ *Workshop Manual '74571925 Removing and installing rear seat cushion'*



Fresh cut on aluminium butyl mat

- 4 Rework ⇒ *Reworking seat belt buckle -1-* seat belt buckle.
 - 4.1 Remove the fresh cut ⇒ *Reworking seat belt buckle -2-* using suitable means, from the aluminium butyl mat ⇒ *Reworking seat belt buckle -3-* and dispose of it.
 - 4.2 Remove adhesive residues in the ⇒ *Reworking seat belt buckle -marked area-* with a suitable cleaning agent, if necessary heat butyl residues using a hot air gun beforehand.
- 5 Install rear seat cushion.
⇒ *Workshop Manual '74571925 Removing and installing rear seat cushion'*
- 6 Enter the campaign in the Warranty and Maintenance Logbook.



Reworking seat belt buckle

Warranty processing



Information

The specified labor times were determined specifically for carrying out this campaign and include all necessary preliminary and subsequent rework. The labor time may differ from the labor time published in the Labor Operation List in the PCSS.

Scope 1:

Checking rear seat belt buckles

Labor time:

Checking rear seat belt buckles

Labor time: **25 TU**

Includes: Removing and installing cover for rear left and right seat belt buckles

⇒ **Damage Code ASAO 099 000 1**

Scope 2: **Checking rear seat belt buckles and reworking one seat belt buckle**

Labor time:	
Checking rear seat belt buckles and reworking one seat belt buckle	Labor time: 65 TU
Includes:	Removing and installing cover for rear left and right seat belt buckles Removing and installing rear seat cushion
Required parts:	
N 91026201	Hexagon collar nut 2 piece(s)
ASA00000001*	Consumables 1 piece(s)
* For warranty processing, enter the Part No. ASA00000001 with the designation "Consumable" as an additional part costing \$0.52 in the warranty claim.	
⇒ Damage Code ASA0 099 000 1	

Scope 3: **Checking and reworking rear seat belt buckles**

Labor time:	
Checking and reworking rear seat belt buckles	Labor time: 80 TU
Includes:	Removing and installing cover for rear left and right seat belt buckles Removing and installing rear seat cushion
Required parts:	
N 91026201	Hexagon collar nut 2 piece(s)
ASA00000001*	Consumables 1 piece(s)
* For warranty processing, enter the Part No. ASA00000001 with the designation "Consumable" as an additional part costing \$0.52 in the warranty claim.	
⇒ Damage Code ASA0 099 000 1	

Important Notice: Technical Bulletins issued by Porsche Cars North America, Inc. are intended only for use by professional automotive technicians who have attended Porsche service training courses. They are written to inform those technicians of conditions that may occur on some Porsche vehicles, or to provide information that could assist in the proper servicing of a vehicle. Porsche special tools may be necessary in order to perform certain operations identified in these bulletins. Use of tools and procedures other than those Porsche recommends in these bulletins may be detrimental to the safe operation of your vehicle, and may endanger the people working on it. Properly trained Porsche technicians have the equipment, tools, safety instructions, and know-how to do the job properly and safely. Part numbers listed in these bulletins are for reference only. The work procedures updated electronically in the Porsche PIWIS diagnostic and testing device take precedence and, in the event of a discrepancy, the work procedures in the PIWIS Tester are the ones that must be followed.

© 2025 Porsche Cars North America, Inc.