



IMPORTANT SAFETY RECALL

** RECALL NOTICE **

NHTSA Safety Recall 25V-075

Transport Canada 2025-058

TO: Winnebago Motorhome Dealers

SUBJECT: Campaign # 195 – LP Tank Mounting Fasteners

The National Traffic and Motor Vehicle Safety Act, as amended, provides that each vehicle which is subject to a recall campaign of this type must be adequately repaired within a reasonable time after the owner has tendered it for repair. A failure to adequately repair within 60 days after tender of a vehicle is prima facie evidence of failure to repair within a reasonable time.

If the condition is not adequately repaired within a reasonable time, the owners may be entitled to an identical or reasonably equivalent vehicle at no charge or to a refund of the purchase price less a reasonable allowance for depreciation.

To avoid having to provide these burdensome solutions, every effort must be made to promptly schedule an appointment with each owner and to repair their vehicle as soon as possible. As you will see in reading the enclosed copy of the letter, which is being sent to owners, the owners are being instructed to contact Winnebago Motorhomes, if you do not remedy the condition within five days of the mutually agreed upon service date. If the condition is not remedied within a reasonable time, they are instructed on how to contact the National Highway Traffic Safety Administration.

Reason For This Recall

Winnebago Motorhomes has decided that a defect related to motor vehicle safety exists on certain:

2025 Minnie Winnie, View, Navion, Porto, Spirit, and Vita Motorhomes

These motor homes were manufactured **March 1, 2024**, through **November 19, 2024**.

On certain Winnebago vehicles the fasteners for the LP tank mounting brackets may not be torqued properly, which can result in the LP tank becoming loose or detaching.

A detached LP tank can become a road hazard and increases the risk of an injury or crash.

Owner Notification

Owners will be notified of this campaign on their vehicles by Winnebago Motorhomes. **DO NOT DELIVER TO A CUSTOMER ANY SUBJECT UNIT UNTIL CORRECTIVE ACTION HAS BEEN TAKEN.**



IMPORTANT SAFETY RECALL

Dealer Campaign Responsibility

Dealers are to service all vehicles subject to this campaign at no charge to owners regardless of mileage, age of vehicle, or ownership from this time forward.

Whenever a vehicle subject to this campaign is taken into new or used vehicle inventory or it is in your dealership for service in the future, you should take the steps necessary to be sure the campaign correction has been made before reselling or releasing the vehicle. Owners of vehicles recently sold from your new vehicle inventory are to be contacted by the dealer and arrangements made to make the required correction according to instructions contained in this campaign.

Repair Procedure:

Refer to instructions.

Parts Information:

N/A

Reimbursement:

When the service has been completed, submit the labor amount and labor operation number listed below. Your repair order must be properly signed by both the dealer and the owner.

Labor operation numbers can be found in the Warranty section of WinPortal under Vehicle Info.

Operation Number	Dealer Number	Parts Kit	Time Allowance
24951201	7945	N/A	0.5 hours

Thank you for your cooperation.

Winnebago Motorhomes
Forest City, Iowa 50436
Enclosures



LP Tank Mounting Assembly

Classification

Recall

Model & Model Year

Minnie Winnie/Spirit 2025

View/Navion 2025

Vita/Porto 2025

Disclaimer: Read the entire instructions carefully before starting the procedure. If you have any questions, please contact the Winnebago Industries Technical Service Department by calling 1-866-653-4329 or by email: techservice@wgo.net . This document is confidential and is intended for dealer use only.

Condition

LP tank mounting bracket may become loose.

Correction

Torque nuts to the proper torque specification.

	Part Number	Description	Quantity
Part Required		NA	
Shop Supplies	Torque Wrench Capable of 37.1Ft/Lbs.		
	9/16" Socket		
	9/16" Backup Wrench		
	Torque Marker or Torque Paint		

Steps & Procedures

MINNIE WINNIE/SPIRIT – 300s

Step 1: Locate the LP Tank Compartment on the Unit

Objective: Locate the LP Bracket Assembly within the LP Tank Compartment.

1. Open the compartment door to access the bolts that secure the mounting brackets of the LP tank to the chassis.
 - a. For the Minnie Winnie/Spirit units, the LP Bracket Mounting Assembly is bolted to the vertical welded brackets on the chassis within this compartment. (See Figure 1)

Step 2: Locate the Bolts and Nuts that secure the LP Bracket(s) to the Chassis

Objective: Check for any loose or missing nuts and bolts in the LP Mounting Assembly and apply the correct torque specification.

1. Inspect the LP mounting brackets for any missing or loose nuts and bolts. There should be a total of 4 bolts and 4 nuts in this assembly. (See Figure 2)
 - a. Ensure all 4 bolts and 4 nuts are present.
 - b. If any nuts or bolts are missing, please contact Tech Service by calling **1-866-653-4329** or by email: techservice@wgo.net
2. Ensure all 4 nuts are torqued to the proper torque specification.
 - For the **Minnie Winnie/Spirit** Units the Torque Specification for the 4 nuts on the LP brackets is **50.3 NM (37.1 FT/LBS)**
 - Once torqued correctly, mark the bolts and nuts with torque paint as shown in Figure 2.

Figure 1

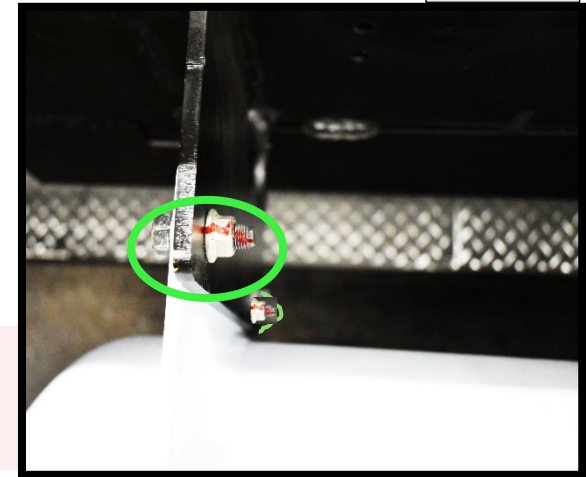
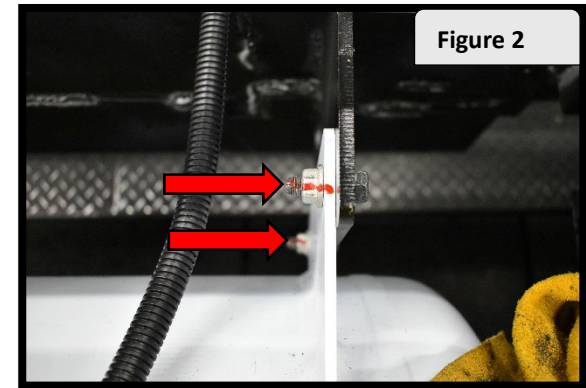


Figure 2



Steps & Procedures

View/Navion – 500s

Step 1: Locate the LP Tank Compartment on the Unit

Objective: Locate the LP Bracket Assembly within the LP Tank Compartment.

1. Open the Compartment door to locate and access the bolts that hold the mounting brackets of the LP Tank onto the chassis. (See Figure 3 - Highlighted in Yellow)
 - a. On **View/Navion** Units, the LP Mounting Assembly is bolted to the Black Mounting brackets (2) that are positioned horizontally by one another in this compartment.

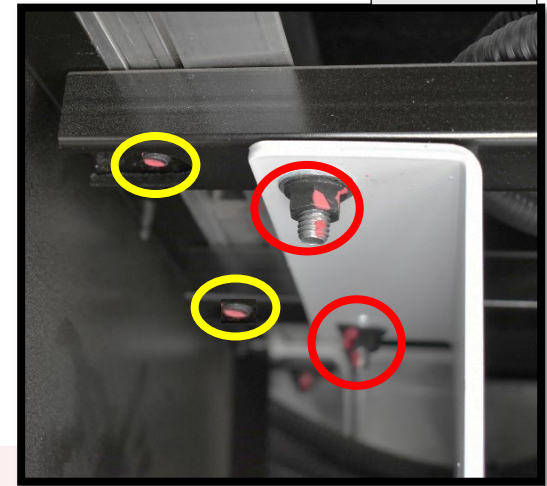


Figure 3

Step 2: Locate the Bolts and Nuts that hold the LP tank to the Mounting Brackets and the bolts and nuts for the Mounting Brackets that hold the LP assembly onto the Chassis

Objective: Check for loose or missing nuts & bolts on the LP Tank Brackets and the LP Mounting Assembly to the Chassis.

1. Inspect for missing or loose nuts and bolts on the LP Tank Brackets and the LP Mounting Assembly to the Chassis. (See Figure 3 – Highlighted in Red)
 - a. Ensure all 4 bolts and 4 nuts are present on the LP Tank Brackets, circled in red.
 - b. Ensure all 4 bolts and 4 nuts are present on the LP Tank Mounting Assembly to the Chassis, circled in yellow.
 - c. If any bolts or nuts are Missing, please contact Tech Service by calling 1-866-653-4329 or by email: techservice@wgo.net
2. Ensure the nuts are torqued to the proper torque specification. (Total of 8 bolts and 8 nuts)
 - For the **View/Navion** Units, the torque specification is **31.5 NM (23.2 FT/LBS)** for both the sets of four nuts.
 - Once torqued correctly, mark the bolts and nuts with torque paint.

Steps & Procedures

Vita/Porto

Step 1: Locate the LP Tank Compartment on the Unit

Objective: Locate the LP Bracket Assembly within the LP Tank Compartment.

1. Open the Compartment door to locate and access the bolts that hold the mounting brackets of the LP Tank onto the chassis.
 - a. For the **Vita/Porto** Units, the LP Bracket Mounting Assembly is bolted on to the chassis steel trim.

Step 2: Locate the Bolts and Nuts that hold the LP Brackets onto the Chassis (See Figures 4–7 – Highlighted in Green)

Objective: Locate the LP Bracket Assembly within the LP Tank Compartment.

1. Inspect for missing or loose nuts and bolts on the LP Mounting brackets. There should be a total of 4 bolts and 4 nuts on this assembly. (See Figures 4-7)
 - a. Ensure all 4 bolts and nuts are present.
 - b. If any bolts or nuts are Missing, please contact Tech Service by calling **1-866-653-4329** or by email: techservice@wgo.net
2. Ensure the nuts (4) are torqued to the proper torque specification. (4 Total Nuts)
 - For the **Vita/Porto** Units, the torque specification is **31.5 NM (23.2 FT/LBS)**
 - Once torqued correctly, mark the bolts and nuts with torque paint.

Figure 4

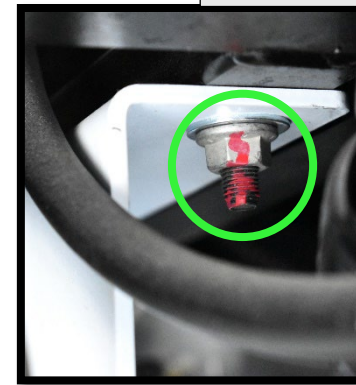


Figure 5

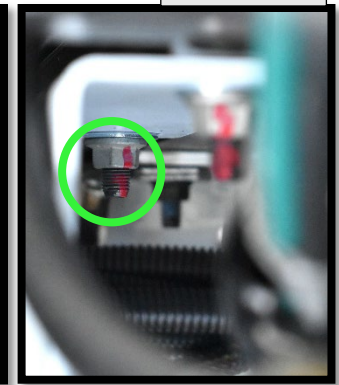


Figure 6

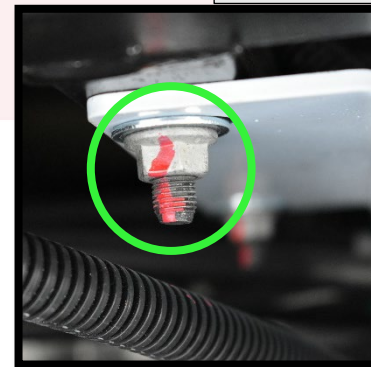


Figure 7

