



Grey Tank Supports May Contact Fuel Tank

Bulletin Type:	Recall	Publication Date:	March 2025
Bulletin #(s):	25V-072 USA 2025-057 Canada	Make(s):	Jayco & Entegra Coach
Job Code(s):	9903619	Model(s):	Launch, Launch LE, Terrain, Terrain LE
Flat Rate(s):	9903619 .50 HR Grey Tank Support Replacement	Model Year(s):	2021-2025

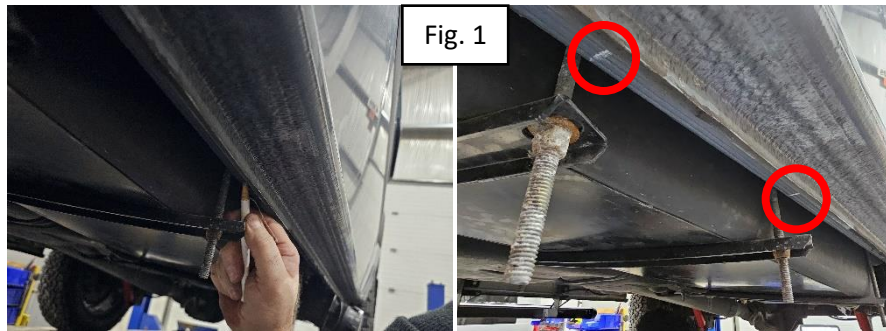
Incident:	Grey Tank Supports May Contact Fuel Tank
Affected Units:	2021-2025 Jayco Terrain, Terrain LE & Entegra Coach Launch, Launch LE
Parts Kit:25V-072	Parts Kit #: 25V-072 X2 -- U-CHANNEL,AL .50X01.50X11GAX15.00 W/TB BLK .44 HOLE (0.144.005) X1 -- U-CHANNEL,AL .50X01.50X11GAX15.00 W/.44 HOLE (0.118.346) X3 -- BOLT,L .38X8.00 ZC (Exterior Side of Coach) X3 -- BOLT,L .38X12.00 ZC (Interior Side Coach) X6 -- WASHER,FL .38 ZC USS X6 -- NUT,HEX LK NYL .38-16 ZC
Misc. Tools & Supplies:	Ratchet or Impact Socket – 9/16” Deep Well Grease Pencil Zip tie Pry Bar
Parts Return Information:	N/A



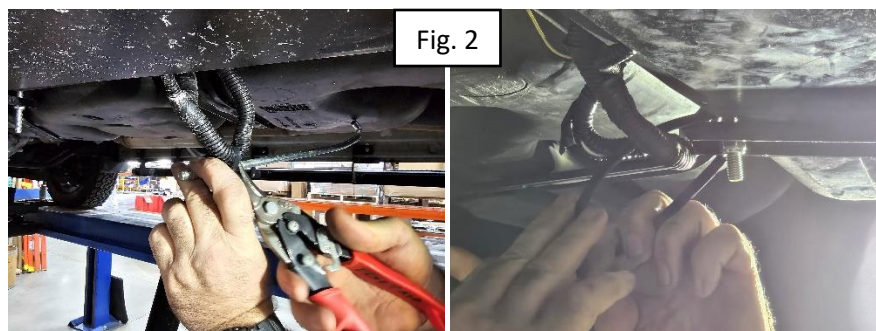
Note: It is CRITICAL only 1 bracket is changed out at a time. Failure to follow the process could result in the repair being performed incorrectly or cause additional labor at your expense.

TANK BRACKETS REPAIR INSTRUCTIONS

1. Mark the locations of the exterior bolts using a grease pencil. **Note: This will make locating the hole for the bolt easier.** (Figure 1)



2. Remove the nut and washer from the bolt on the exterior side of the rear tank bracket. (Figure 3) **Note: You may need to use a prybar to shift the tank towards the interior of the coach for better access. The rear bracket will be a flat bracket and not have a tube. Only the FRONT & CENTER brackets will have the tube.**
3. Remove the opposite nut and washer, from the bolt, on the interior side of the rear tank bracket.
4. Take down the original rear bracket and bolts and replace with the new bracket and bolts (without tube). The top of the bracket should be resting against the bottom of the tank.
5. With the bracket in position, re-secure the nuts and washers onto the bolts to fasten the bracket in place. **Note: You will want to hand tighten the nut and washer on the bolt to prevent cross threading. Then use an impact or ratchet to tighten until snug. Do not fully secure the tank bracket as this will be done in a later step.**
6. Remove the nut and washer from the bolt, on the exterior side of the tank bracket, located in the center of the tank. (Figure 3)
7. Remove the opposite nut and washer from the bolt, on the interior side of the tank bracket, in the center of the tank. **Note: The interior center bolt will be zip tied to an OEM harness. The Zip tie will need to be cut to free the bolt and bracket from the coach. A new zip tie will need to be used between the new bolt and the OEM harness after re-installing the new bracket.** (Figure 2)



8. Take down the original center bracket and bolts and replace with the new bracket and bolts (with tube). **Note: The top of the bracket tube should be resting against the bottom of the tank.** (Figure 4)
9. With the bracket in place, re-secure the nuts and washers onto the bolts to fasten the bracket in place. **Note: You will want to hand tighten the nut and washer on the bolt to prevent cross threading. Then use an impact or ratchet to tighten until snug. Do not fully secure the tank bracket as this will be done in a later step.**

10. Move to the front most bracket on the tank. Remove the nut and washer from the bolt, on the exterior side of the tank bracket. Then repeat for the interior side bolt. (Figure 3)
11. Take down the original front bracket and bolts and replace with the new bracket and bolts (with tube).
12. With the bracket in place, re-secure the nuts and washers onto the bolts to fasten the bracket in place. **Note: You will want to hand tighten the nut and washer on the bolt to prevent cross threading. Then use an impact or ratchet to tighten until snug. Do not fully secure the tank as this will be done in a later step.**



Fig. 3



Fig. 4

13. With all the brackets changed out, you will want to go back and fully secure all of the nuts on the bolts. Each should be torqued to 35IN-LBS. (Figure 5) **Note: Be sure to torque the bolts in an alternating pattern.** (Figure 6)

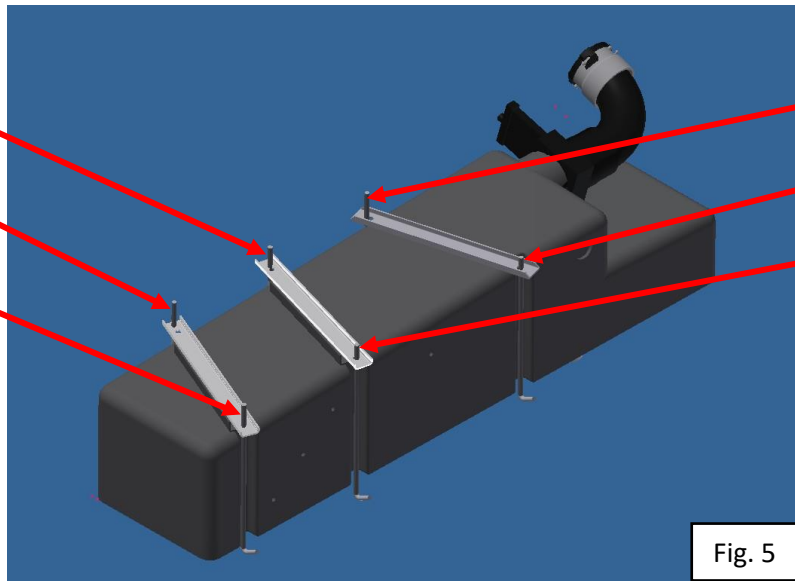


Fig. 5



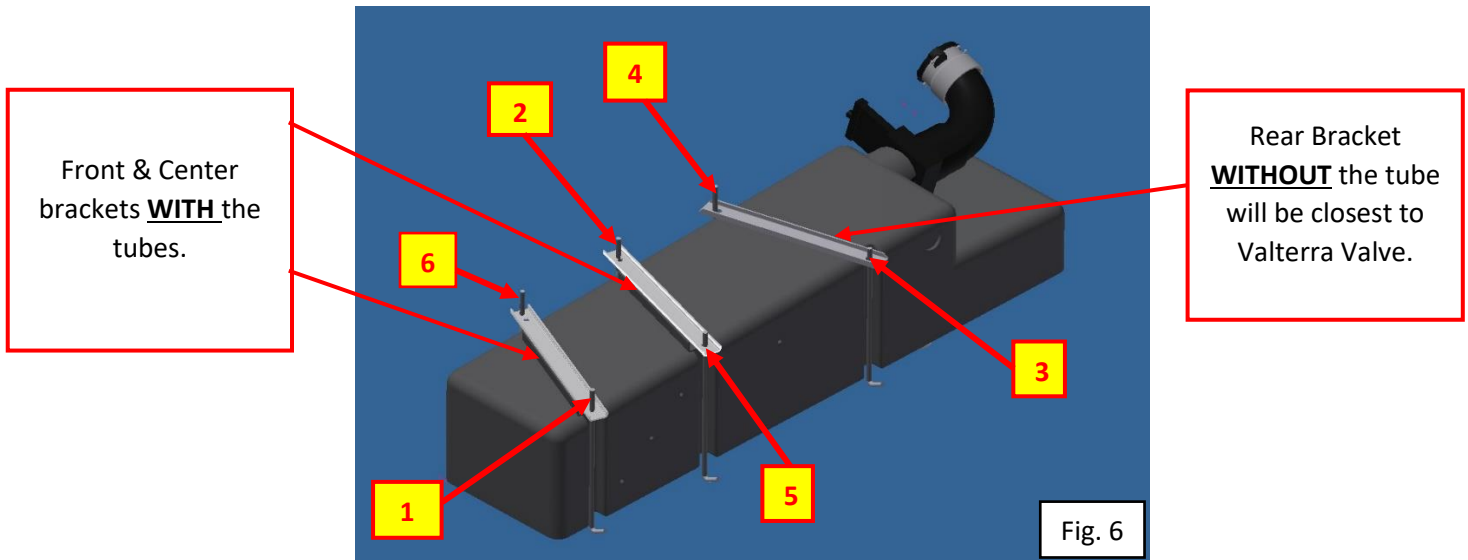


Fig. 6

Jayco's sole obligation under our limited warranty is to repair or replace defective materials and/or workmanship deemed our responsibility as determined by Jayco in our sole discretion. Jayco reserves the right to use new and/or remanufactured parts or materials of similar quality to complete any work, and to make parts and/or design changes as appropriate without notice to anyone. Jayco designs and/or materials changes are done without obligation to incorporate such changes in previously manufactured product. Jayco makes every reasonable effort to ensure field remedies will not adversely affect performance and/or safety of the unit. This field remedy is not intended to extend to future performance of this RV, or any of its materials, components or parts beyond the standard warranty period. The RV owner's obligation to notify Jayco, or one of its independent, authorized dealers, of a claimed defect does not modify any obligation placed on the RV owner to contact Jayco directly when attempting to pursue remedies under state or federal law.

903 South Main Street • P.O. Box 460 • Middlebury, IN 46540