

March 13, 2025

Version 2

Safety Recall: 2025 Pilot 3rd Row Seat Belt Not Routed Correctly

Supersedes Version 1, dated February 6, 2025 to revise the information highlighted in **yellow**.

APPLIES TO

Year	Model	Trim Level	VIN Range
2025	Pilot	ALL	Check the iN VIN status for eligibility.

REVISION SUMMARY

Under INSPECTION PROCEDURE, the procedure and image were updated.

BACKGROUND

The passenger side 3rd row seat belt may have been improperly routed, trapping and hiding the seat belt latch plate and seat belt webbing behind the rear side liner panel.

CUSTOMER NOTIFICATION

Owners of affected vehicles will be sent a notification of this campaign. Do an iN VIN status inquiry to make sure the vehicle is shown as eligible. Some vehicles affected by this campaign may be in your new or used vehicle inventory.

Failure to repair a vehicle subject to a recall or campaign may subject your dealership to claims or lawsuits from the customer or anyone else harmed as a result of such failure. Before selling a vehicle in inventory, always check if it is affected by a safety recall by conducting a VIN status inquiry.

CORRECTIVE ACTION

- Inspect the location of 3rd row right passenger seat belt latch plate and seat belt webbing, and ensure proper seat belt functionality
- Reroute the 3rd row right passenger seat belt latch plate and/or seat belt webbing, if necessary

WARRANTY CLAIM INFORMATION

Take clear photos of the VIN sticker and routing of the 3rd row seat belt latch plate and/or seat belt webbing. The claim may be subject to debit if poor quality images are submitted.

[Refer to Image Capture Procedure.](#)

Operation Number	Description	Flat Rate Time	Defect Code	Symptom Code	Template ID	Failed Part Number
8665A0	Inspect 3 rd row seat belt, belt not trapped	0.2hr	6RJ00	ZL400	A25018A	04824-T90-A00ZA
8660A0	Remove panel and release seat belt latch (includes photos)	0.6hr			A25018B	

CUSTOMER INFORMATION: The information in this bulletin is intended for use only by skilled technicians who have the proper tools, equipment, and training to correctly and safely maintain your vehicle. These procedures should not be attempted by "do-it-yourselfers," and you should not assume this bulletin applies to your vehicle, or that your vehicle has the condition described. To determine whether this information applies, contact an authorized Honda automobile dealer.

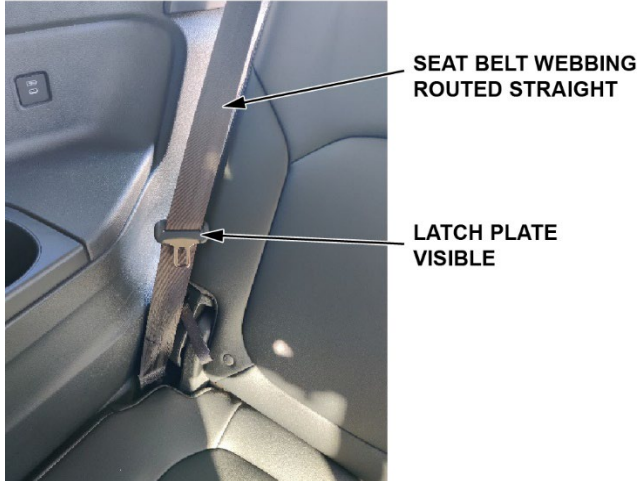
TOOL INFORMATION

NONE

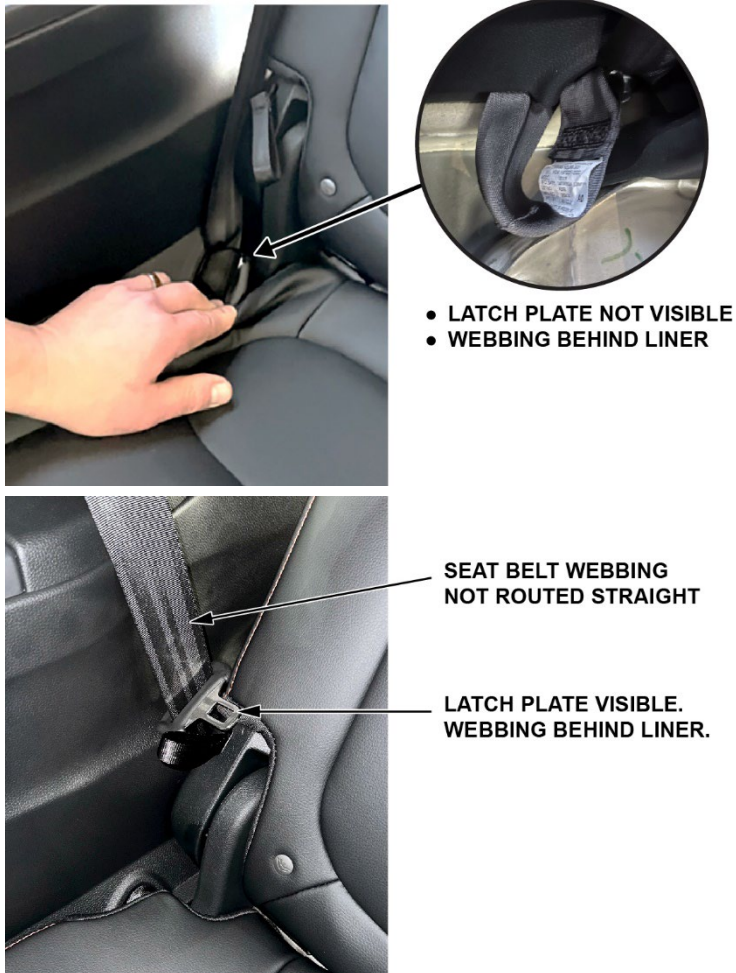
INSPECTION PROCEDURE

1. Inspect the 3rd row right passenger seat belt, see if the latch plate and seat belt webbing are visible and not trapped behind the rear side liner.
 - If the latch plate and the seat belt webbing are visible, no further action is needed. Ensure proper seat belt functionality.
 - If the latch plate is **not** visible and/or webbing is **not** properly routed, proceed to the REPAIR PROCEDURE.

CORRECT

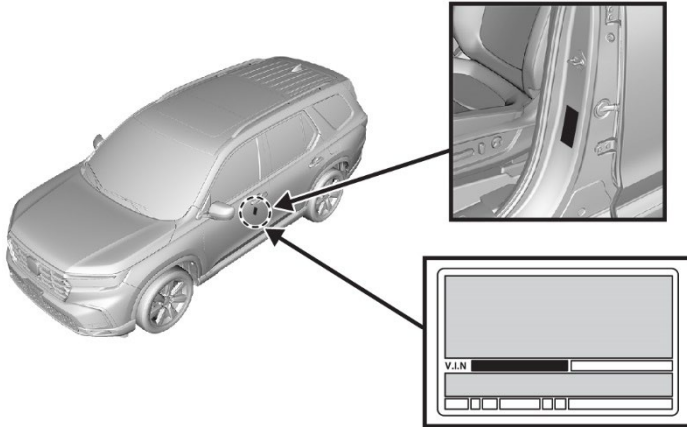


INCORRECT



REPAIR PROCEDURE

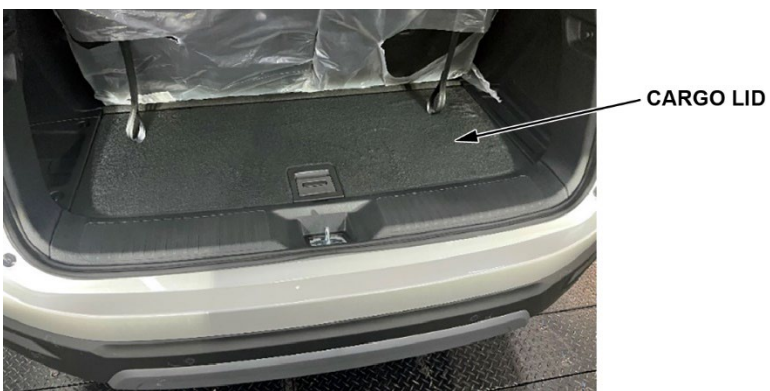
1. Prior to starting the repair procedure, take a photo of the door VIN sticker.
NOTE: A photo of the VIN sticker **will be** needed for warranty submission.



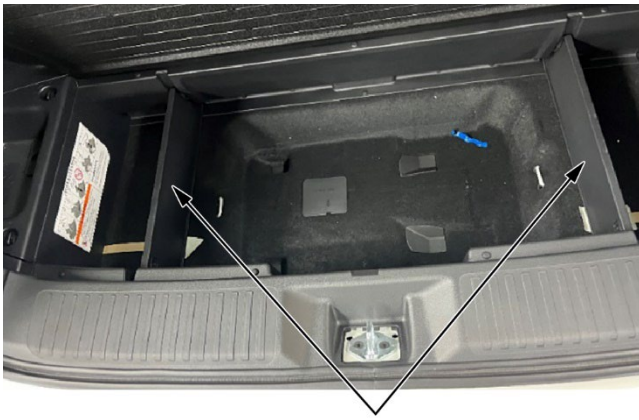
2. Take a photo of the 3rd row right passenger latch plate and seat belt webbing routing.



3. Remove the cargo lid.

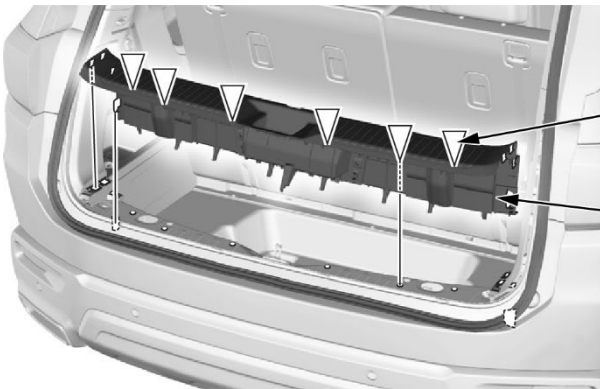


4. Remove the two cargo dividers.



CARGO DIVIDERS

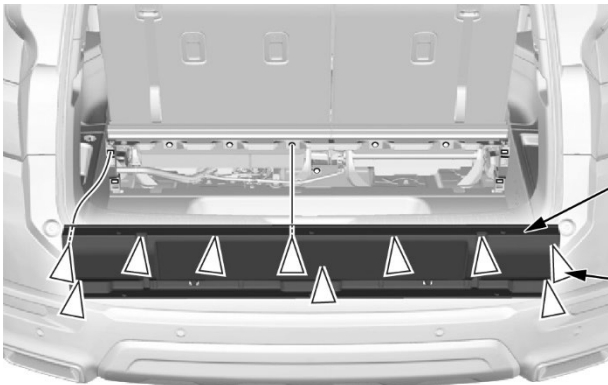
5. Release the six clips to remove the lower tailgate step garnish.



CLIPS (6)

**LOWER TAILGATE
STEP GARNISH**

6. Pull on the forward garnish to release the clips and tabs, then remove the forward garnish.



**FORWARD
GARNISH**

CLIPS (10)

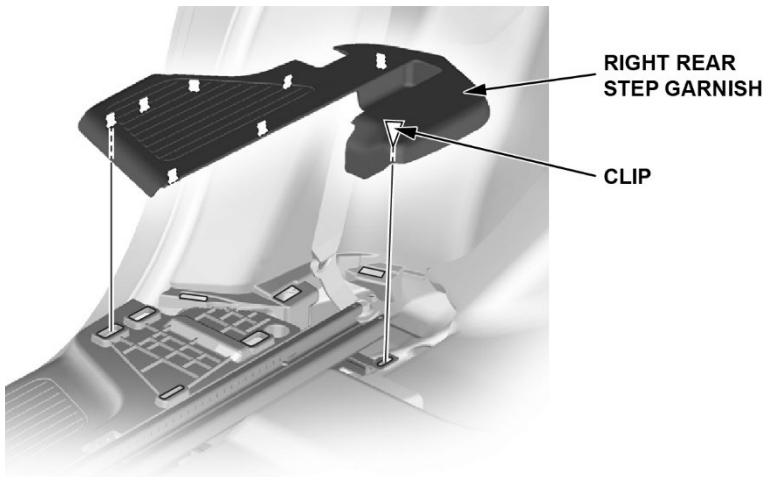
7. Remove the two bolts that secure the metal seat bar, then remove the seat bar.



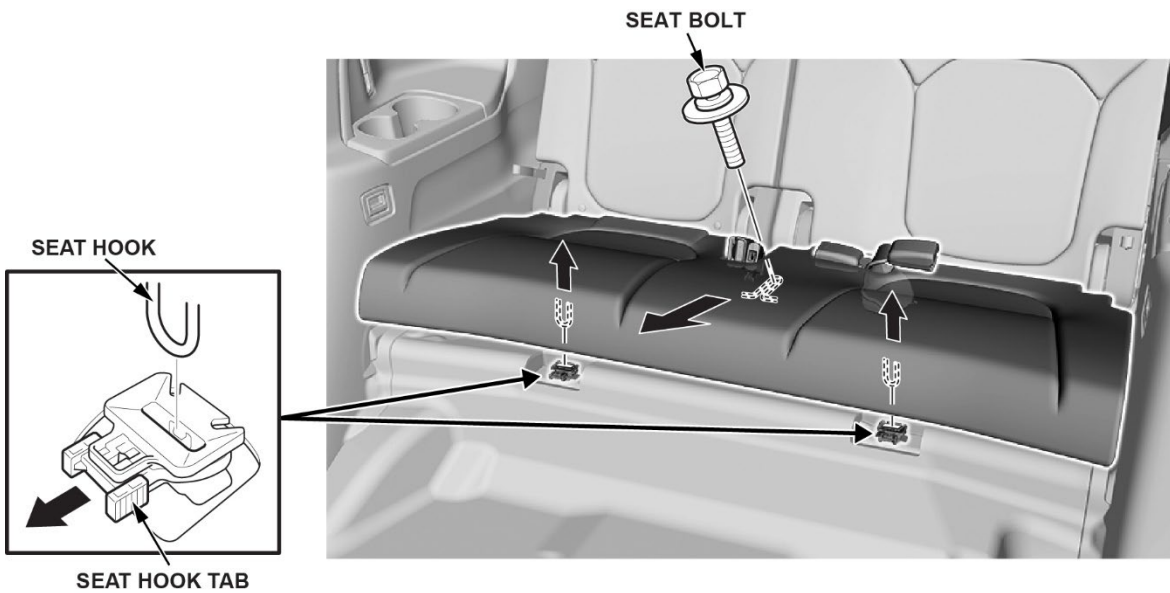
SEAT BAR

BOLTS

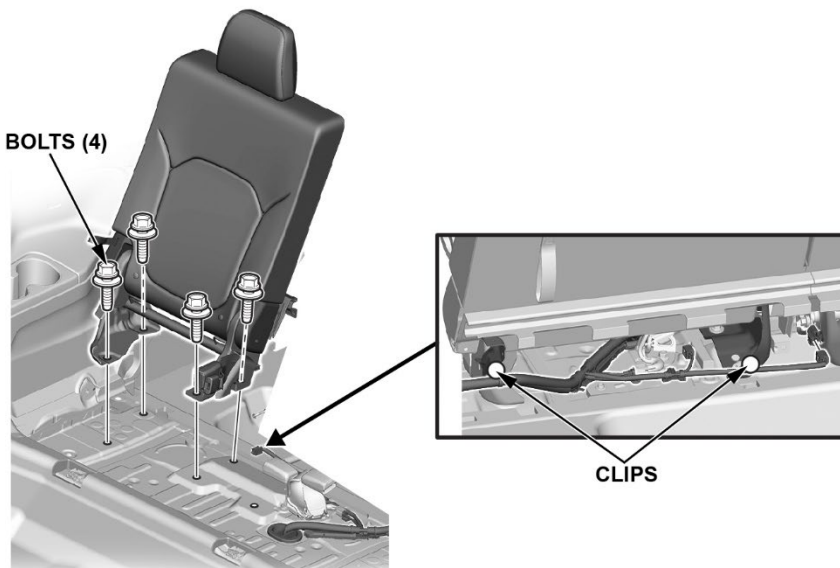
8. Remove the right rear step garnish.



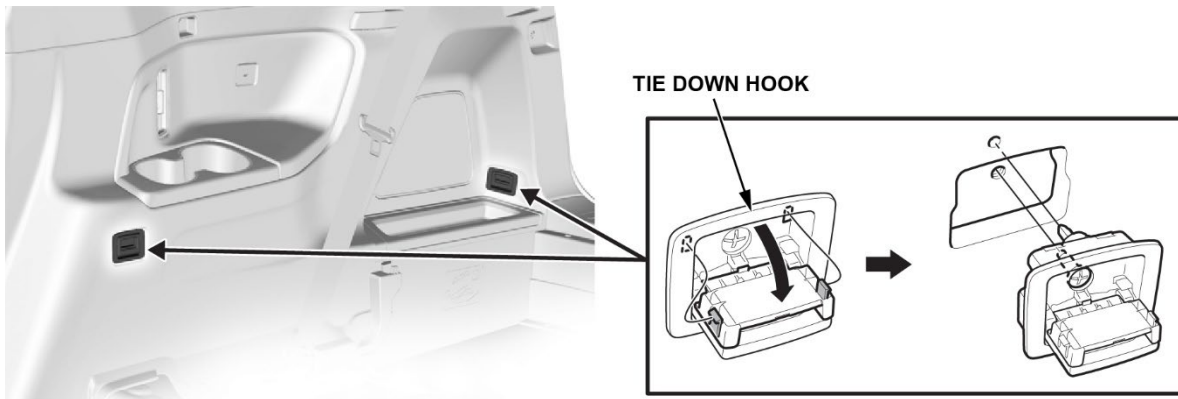
9. Push down on the 3rd row seat cushion while pulling on the seat hook tab to release the seat hook. Remove the center seat bolt, then slide the seat cushion forward to remove.



10. Remove the four mounting bolts from the 3rd row right passenger seat only, then remove the harness clips and disconnect the harness connector.



11. Remove the two right tie down hooks.

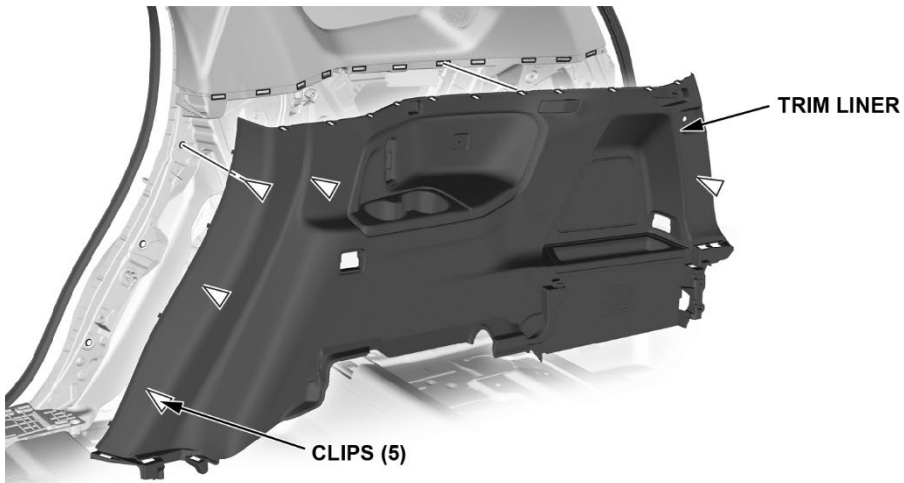


12. Remove the cargo hook knob.



13. Remove the right rear trim liner coupler and clips.

NOTE: Disconnect the connector to the USB port if equipped.



14. Reroute the trapped latch plate or seat belt webbing from behind the rear side liner.



TRAPPED SEAT BELT LATCH PLATE

15. Ensure that the latch plate is visible and seat belt webbing is routed straight. Ensure proper seat belt functionality with the seatbelt assembly.

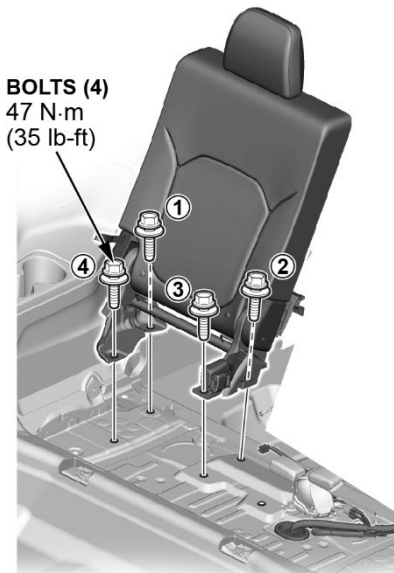


SEAT BELT WEBBING ROUTED STRAIGHT

LATCH PLATE

16. Reinstall all removed parts in the reverse order of removal.

17. Install the 3rd row right passenger seat mounting bolts, tighten the bolts by hand first. Torque the bolts to the specified torque **47 N·m (35 lb-ft)** in the numbered sequence shown.



BOLTS (4)
47 N·m
(35 lb-ft)

18. [Perform seat belt inspection.](#)

Image Capture Procedure

1. The **PHOTO ATTACHMENTS** area automatically appears on a warranty claim form whenever PH is indicated on the sublet code, as shown below.

Sublet Information				
Sublet Code	Work Description	Invoice No.	Rental Days	Sublet Amount
PH	PHOTO ATTACHMENT	PHOTO		0.00
<< SELECT >>				

[Upload files](#) **File Attachments**

2. To attach photos to the claim, click the **Upload Images** link.

Sublet Information				
Sublet Code	Invoice No.	Work Description	Sublet Amount	Rental Days
P1	1234567899	PAINT	500.00	
<< SELECT >>				

[Upload Images](#) **Photo Attachments** [View Images](#)

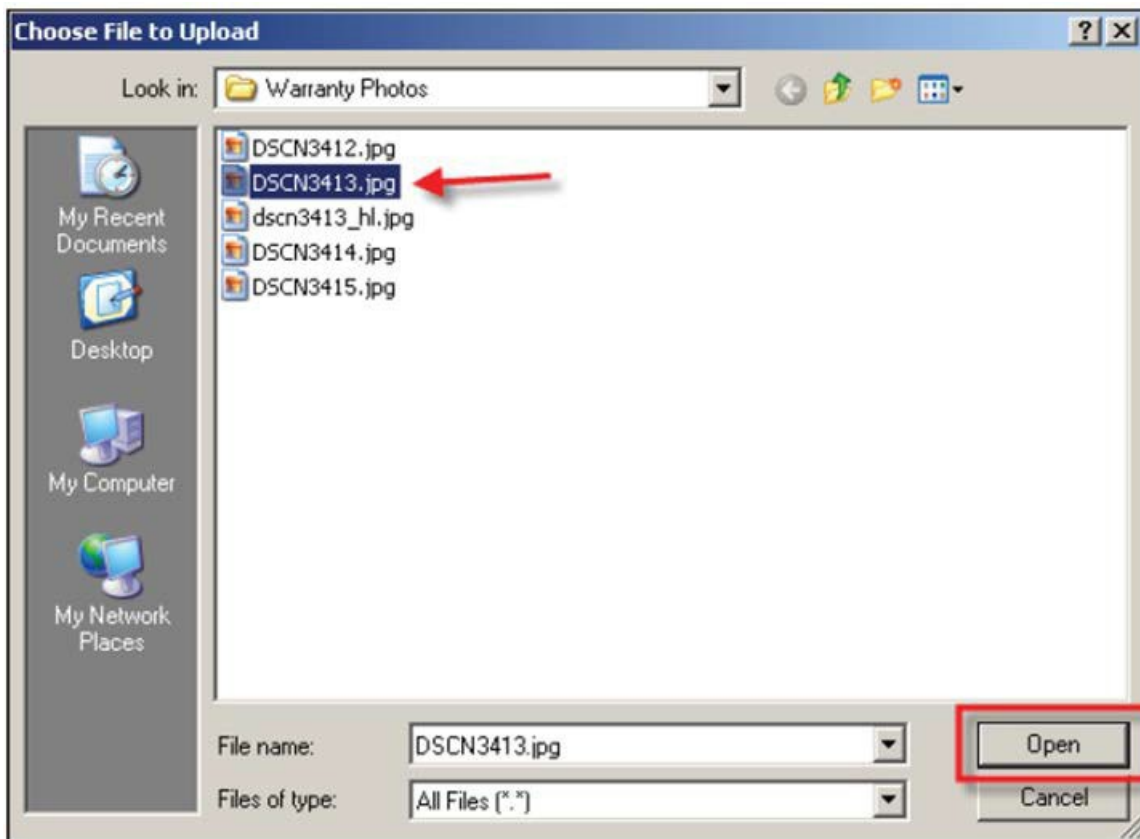
3. The **Claim File Attachment** screen appears. Then, select **Choose File**.

Claim File Attachment

Uploaded JPG/PDF Files 0 (Maximum 12)

[Choose File](#) NO FILE CHOSEN [Preview](#) [Upload](#)

4. Click to highlight an image file to be uploaded.



- Click **Open** to select the file.
- Click **Preview** if you would like to view the image before uploading.

NOTE: *Fit Window* is selected by default as the size at which the preview images are displayed. Select *Full Size* to enlarge the image.

Claim File Attachment

Uploaded JPG/PDF Files 0 (Maximum 12) Fit To Window Full Size

Name	Media Type	File Size	Image Size	Status	Action
IMG_0196.jpg	image/jpeg	3.49 MB	4032 x 3024	Not Uploaded	Delete



- Click **Upload** to attach the image to the warranty claim.

Claim File Attachment

Uploaded JPG/PDF Files 0 (Maximum 12) Fit To Window Full Size

Name	Media Type	File Size	Image Size	Status	Action
IMG_0196.jpg	image/jpeg	3.49 MB	4032 x 3024	Not Uploaded	Delete

- The **Uploaded Images** count increases each time a photograph is uploaded.

NOTE: Make sure that **all required** photographs are uploaded before warranty claim submission.

Claim File Attachment

Uploaded JPG/PDF Files 1 (Maximum 12)

NO FILE CHOSEN

- Click **Choose File** again and follow the same steps to continue attaching the remaining images to the claim until finished.