



GROUP	MODEL
Safety Recall Campaign	2023-2025MY Niro HEV, PHEV and EV (SG2 P/HEV, SG2 EV)
NUMBER	DATE
SC332 (Rev 1, 07/02/2025)	January 2025

SAFETY RECALL CAMPAIGN

FLOOR HARNESS INSPECTION AND

SUBJECT:

PROTECTIVE COVERING INSTALLATION (SC332)

NOTICE

This bulletin has been revised to include additional information. New/revised sections of this bulletin are indicated by a black bar in the margin area.

This bulletin provides information to 1) to inspect and, if necessary, replace the floor wiring harness assembly, and 2) to reroute the floor wiring assembly and install additional protective coverings on certain 2023-2025MY vehicles equipped with a manual operation front passenger seat listed in the table on page 9. The floor wiring assembly, located underneath the front passenger seat, contains wires that control certain vehicle restraint systems. Repeated sliding adjustment of the manual front passenger seat may damage one or more of the wires in the floor wiring assembly due to variations in its routing. This may result in 1) the nondeployment of airbag(s) and/or seatbelt pretensioner(s) in a crash sufficient to warrant a deployment, or 2) the inability to suppress the passenger frontal airbag for a child or small occupant, or 3) inadvertent deployment of the passenger side airbag (SAB), increasing the risk of injury. Follow the procedure outlined in this publication to inspect the floor wiring assembly and install the protective covering to the wiring under the front passenger seat. In some cases where damage is found, replace the floor wiring assembly with a new part and install the protective covering on the applicable vehicle. Before conducting the procedure, verify that the vehicle is included in the list of affected VINs.

Note: Not all NIRO HEV/PHEV/EV vehicles manufactured within the specified production ranges outlined above are affected by this recall.

NOTICE

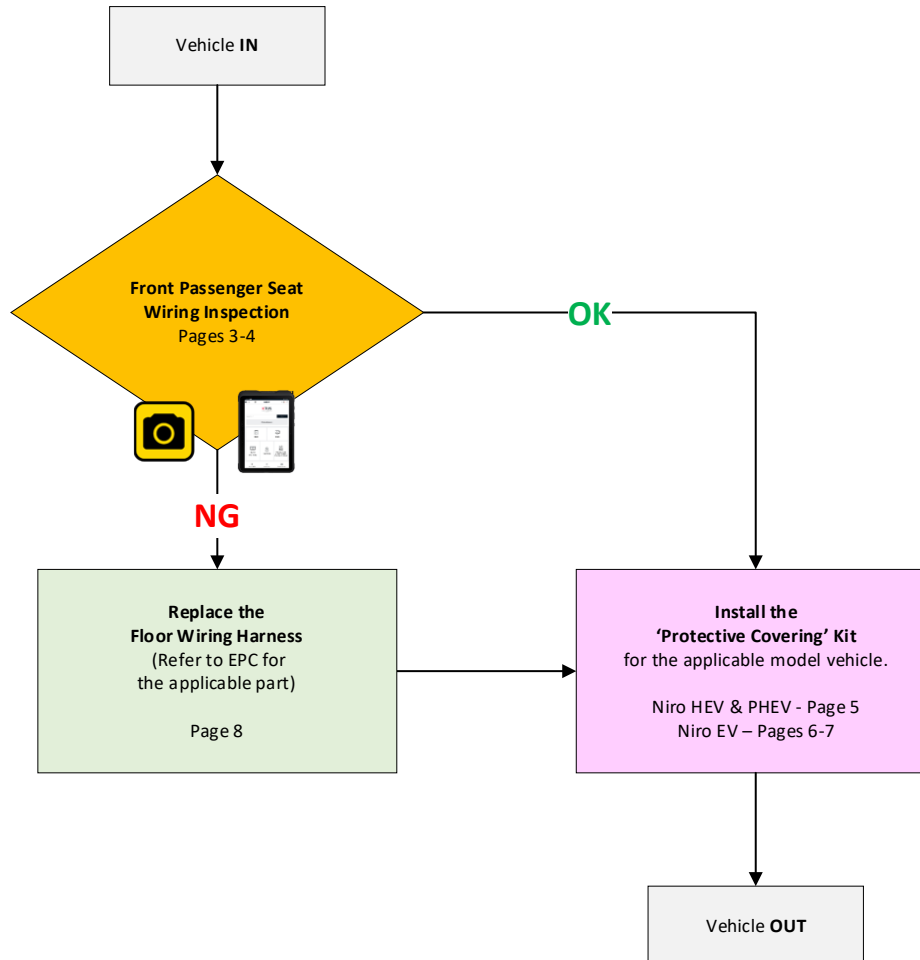
There is no charge to the vehicle owner for this repair. Under applicable law, you may not sell or otherwise deliver any affected vehicle until it has been repaired pursuant to the procedures set forth in this bulletin.

Repair status for a VIN is provided on KDealer+ (Service → Warranty Coverage → Warranty Coverage Inquiry → Campaign Information). Not completed Recall / Service Action reports are available on KDealer+ (Consumer Affairs → Not Completed Recall → Recall VIN → Select Report), which includes a list of affected vehicles.

Flowchart

① IMPORTANT

Take a picture of the wiring inspection area using KDS warranty attachment picture function to secure proper documentation and warranty compliance. Mandatory Parts Return is required for inspections resulting in a NG result. All claims are subject to Warranty review and chargeback.



OK Condition - Proceed to the protective covering installation instructions for the applicable model:

- Niro (HEV and PHEV) Page 5
- Niro (EV) - Page 6-7

NG Condition - Replace the Floor Wiring Harness and install the protective covering.

- Niro (HEV and PHEV) Page 8

***Floor wiring assemblies have different part numbers by model and option;**

(Refer to VIN LIST) - (P)HEV: 91505(6)-ATXXX, EV: 91515-AOXXX

Any damaged parts such as trims, fasteners, clips, etc., that need to be replaced during a floor wire harness replacement will need to be charged to the sublet.

SUBJECT: FLOOR HARNESS INSPECTION & PROTECTIVE COVERING INSTALLATION (SC332)

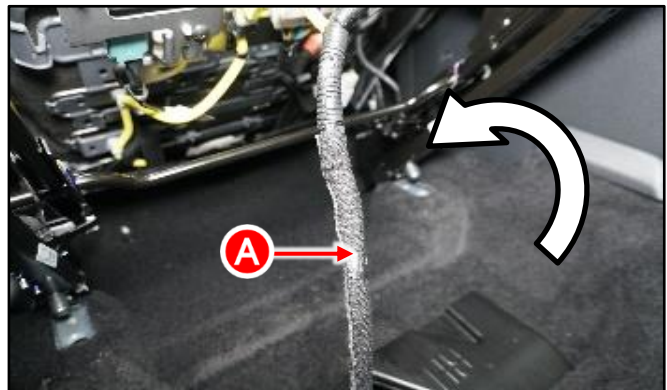
Inspection and Covering Installation: (Niro HEV and PHEV)

1. Loosen the four (4) right front (passenger side) seat retaining bolts to detach the seat.



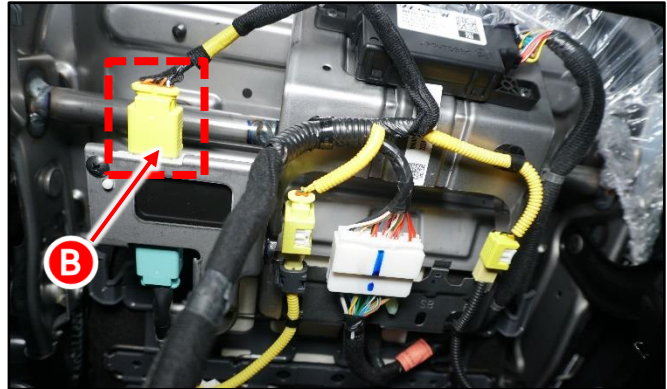
2. Carefully, lift-tilt the front of the seat backward towards the rear seat to access the under-seat wiring and connectors.

Note: The seat wiring harness (A) coming from under the carpet will only allow the seat to be tilted up to a certain degree.

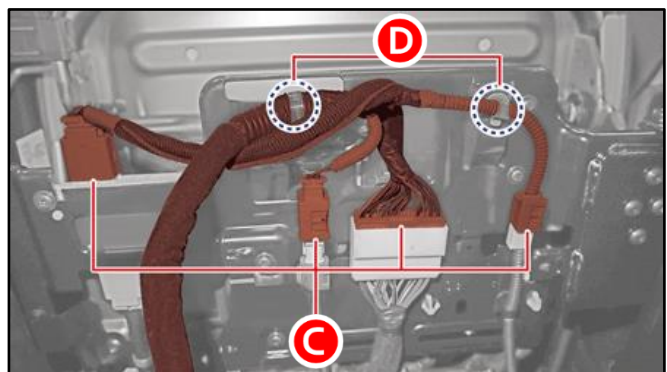
**HEV and PHEV:**

- 3a. Disconnect the occupant detection sensor (ODS) connector (B).

DO NOT disconnect any other connectors.

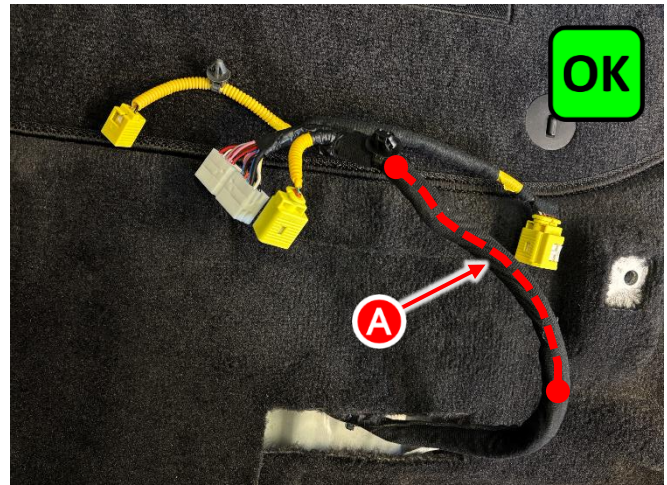
**EV ONLY:**

- 3b. Disconnect ALL four (4) seat connectors (C).
- 3c. Detach the two (2) wiring retaining clips (D).



SUBJECT: FLOOR HARNESS INSPECTION & PROTECTIVE COVERING INSTALLATION (SC332)

4a. Inspect the seat wiring (A) coming from under the floor carpet for damage (red outlined area). There should be no damage (OK) to the protective wiring cloth insulation.



(EV shown for reference use only)

4b. **OK Condition** - Proceed to the protective covering installation instructions for the applicable model:

- Niro (HEV and PHEV) Page 5
- Niro (EV) - Page 6

5a. The (NG) wiring sample shown was rubbing against the steel ODS module retaining bracket and caused damage to the wiring insulation.



(HEV shown for reference use only)

5b. **NG Condition** - Take a clear photo of the NG condition using the KDS Warranty Claim Attachment tab and then refer to the floor wiring harness replacement (Page 8) and then install the protective covering (Page 5 or 6) for the applicable model.

Cloth Insulation	Good (OK)			No Good (NG)	
	Stage 0	Stage 1	Stage 2	Stage 3	Stage 4
Inspection	No damage	Minor cloth rubbing No exposed wiring	Damaged cloth and minor visible wiring	Damage cloth <u>and</u> wiring insulation	Damage cloth <u>and</u> internal wiring
Sample					
Action	No replacement	No replacement	No replacement	Replacement Required	Replacement Required



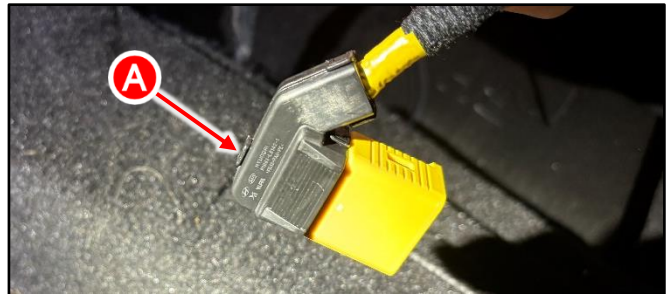
SUBJECT: FLOOR HARNESS INSPECTION & PROTECTIVE COVERING INSTALLATION (SC332)

Protective Covering Installation: (HEV and PHEV ONLY)

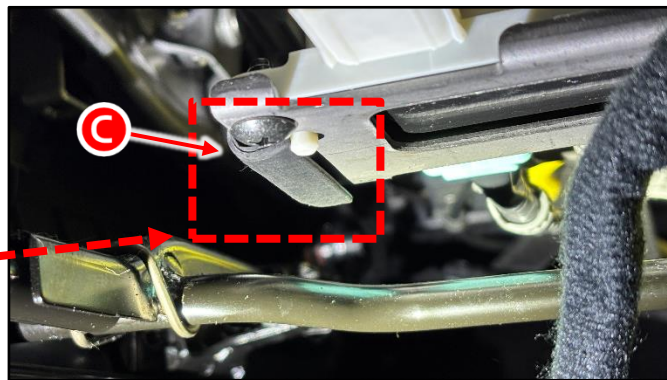
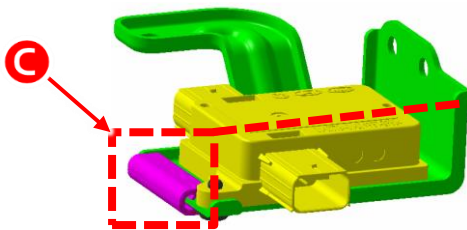
1. Install the two (2) protective plastic covers (A) over the back end of the disconnected ODS connector (B).

NOTICE

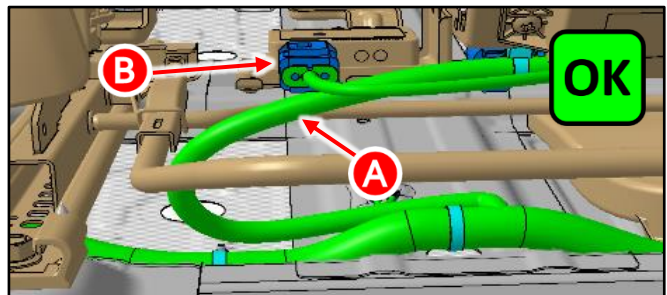
Be sure to snap/secure the two (2) pieces together around the wiring as shown.



2. Install the rubber protective cover (C) over the side edge of the ODS retaining bracket as shown.



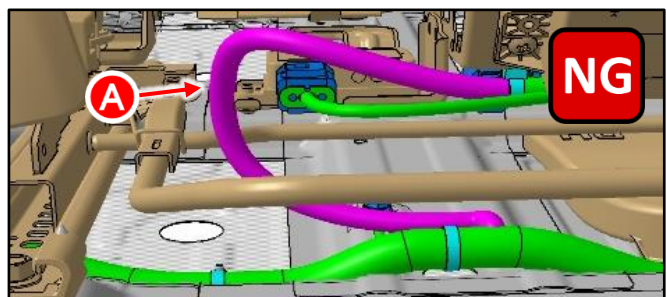
3. Reconnect the ODS seat connector (B) and ensure that the floor wiring harness (A) is routed under the ODS connector wiring.



4. Reinstall the seat in the reverse order of removal and secure by torquing the seat retaining bolts to specification.



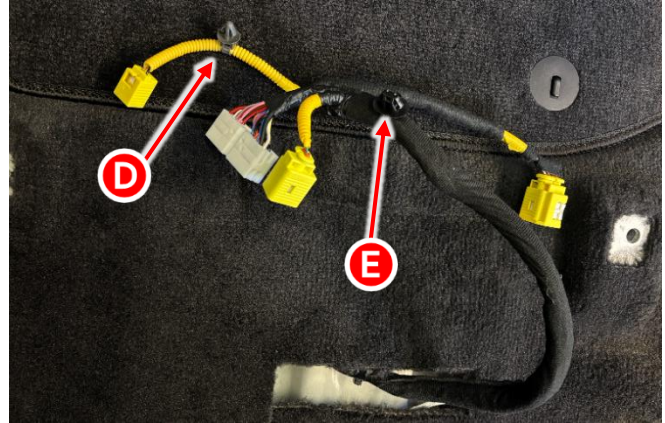
Tightening torque for nut/bolt (X):
36.2-43.4 lb-ft(49.0-58.5Nm)



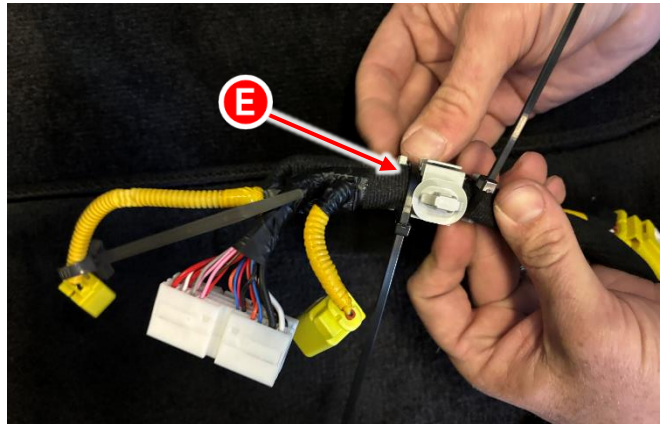
5. Confirm normal seat operation.

Protective Covering Installation: (Niro EV only)

- Using a wire cutter, carefully cut-off the two (2) wiring harness retaining clips (D) and (E).



- Attach the plastic covering over the wiring harness as shown, the location should be near the old removed clip (E).



- Install the two (2) wire ties as shown over the opposite ends of the new plastic covering.
DO NOT tighten the cable ties at this time.

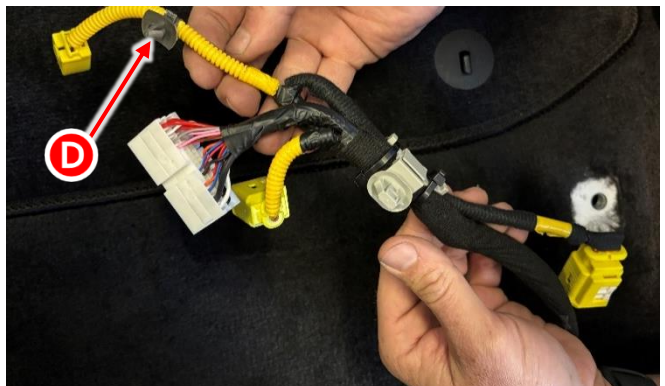
- Measure and set the distance from the end of the plastic covering to the end of the ODS connector to 3-3.5" inches.



- Tighten the cable ties to secure the plastic covering in place.

- Cut-off any remaining cable tie ends.

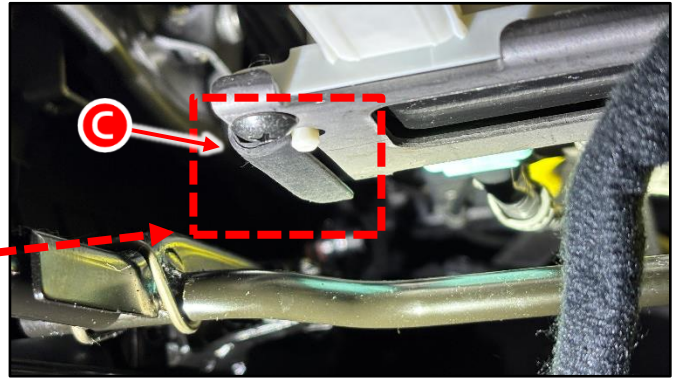
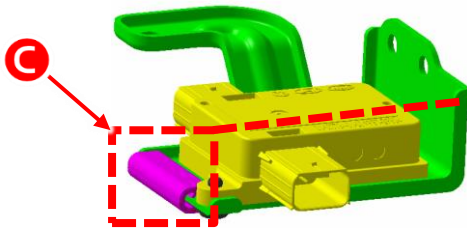
- Install the new cable tie clip fastener on the connector (D) wiring and cut-off any remaining cable tie end.



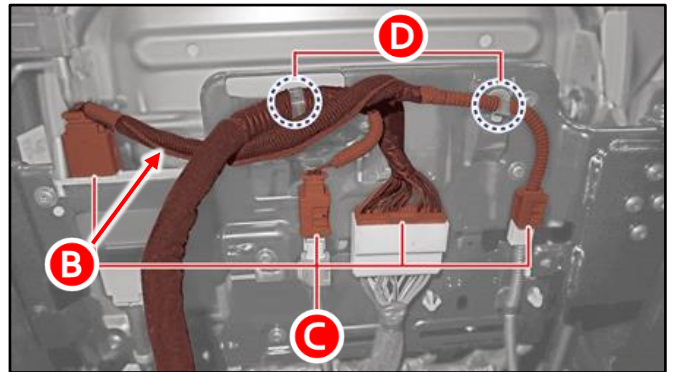
Note: The wiring protective covering installation for Niro EV models should look as shown.

SUBJECT: FLOOR HARNESS INSPECTION & PROTECTIVE COVERING INSTALLATION (SC332)


- Install the rubber protective cover (C) over the side edge of the ODS retaining bracket as shown.



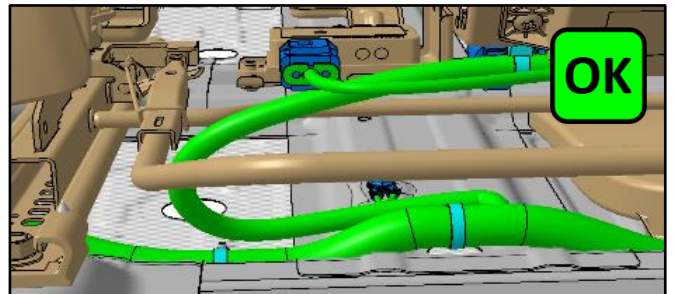
- Reconnect ALL four (4) seat connector and ensure that the floor wiring harness is routed under the ODS connector wiring.



- Reinstall the seat in the reverse order of removal and secure by torquing the seat retaining bolts to specification.



Tightening torque for nut/bolt (X):
36.2-43.4 lb-ft(49.0-58.5Nm)



- Confirm normal seat operation.

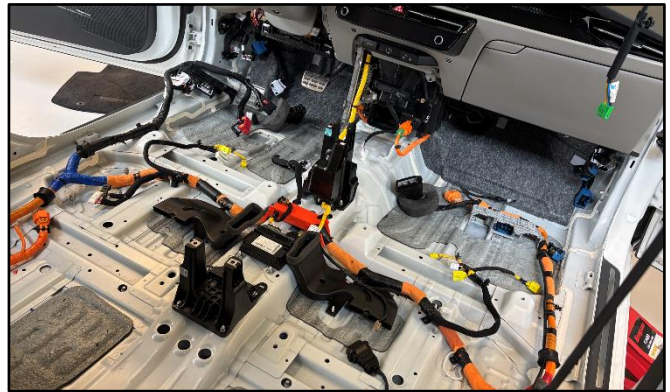
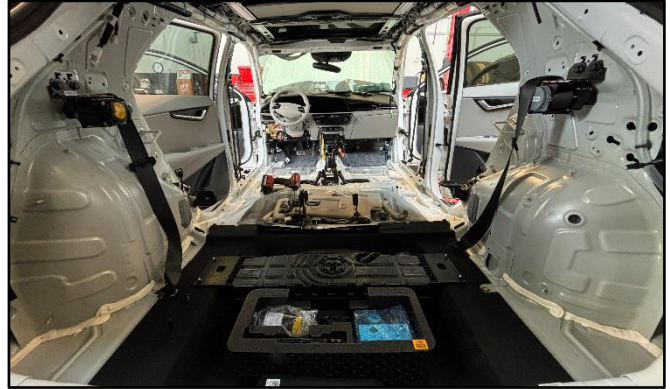


Replacement Procedure: (Floor Wiring Harness)

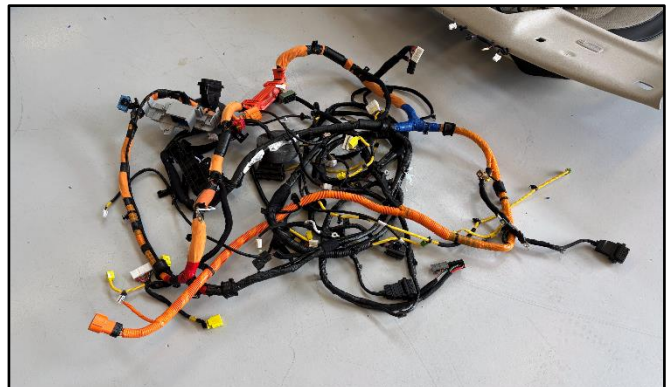
1. Replace the floor wiring harness assembly by referring to the shop manual on KGIS (for the applicable model) and remove the following parts:

Body (Interior and Exterior)

- Front Seat Assembly
- Rear Seat Assembly
- Interior Trim
 - Front Pillar
 - Door Scuff Trim
 - Cowl Side Trim
 - Center Pillar Trim
 - Rear Pillar Trim
- Floor Console
- Roof Trim
 - Sunvisor
 - Assist Handles
 - Roof Trim Assembly



2. Disconnect the floor wiring harness from the vehicle (by disconnecting several connectors) and replace it with a new part.
3. Reinstall all removed parts in the reverse order of removal.
4. Verify normal vehicle operation.



SUBJECT: FLOOR HARNESS INSPECTION & PROTECTIVE COVERING INSTALLATION (SC332)

AFFECTED VEHICLE RANGE:

Model	Production Date Range
Niro HEV (SG2 HEV)	June 21, 2022 to December 17, 2024
Niro PHEV (SG2 PHEV)	July 11, 2022 to December 16, 2024
Niro EV (SG2 EV)	August 10, 2022 to December 13, 2024

REQUIRED PART:

Part Name	Part Number	Figure	Qty.	Comments
Protective Covering Kit (HEV & PHEV)	91961 L8140QQK		1	Each Part Must Be Ordered Individually
	88398 AT000QQK		1	
Protective Covering Kit (EV)	91961 CV520QQK		1	Each Part Must Be Ordered Individually
	91961 J9820QQK		1	
	91599 AOT3LQQK		2	
	88398 AT000QQK		1	
Floor Wiring Assembly (ALL)	Refer to the table shown below.		1	Replace ONLY if damaged. Include photo with claim.
Fastener/Clip	82315 2P000		5	
	85859 3S500		2	

FLOOR WIRING Harness: Refer to EPC for the applicable Part Number / Vehicle VIN

P/HEV			
91505 AT753	91505 AT903	91505 AT924	91505 AT934
91505 AT943	91505 AT954	91505 AT963	91505 AT973
91505 AT984	91506 AT113	91506 AT123	91506 AT133
91506 AT143	91506 AT154	91506 AT164	91506 AT174
EV			
91515 AO421	91515 AO431	91515 AO481	91515 AO491

Printed document copy is for reference only; information may be updated at any time. Always refer to KGIS for the latest information.



SUBJECT: FLOOR HARNESS INSPECTION & PROTECTIVE COVERING INSTALLATION (SC332)

WARRANTY INFORMATION:

N Code: N99 C Code: C99

Model	Claim Type	Causal P/N	Qty.	Repair Description	Labor Op Code	Op Time	Replacement P/N	Qty.
SG2 P/HEV	R	91506 AT263	0	(SC332) Wiring Inspection + Protective Covering Installation	251017R0	0.4 M/H	91961 L8140QQK	1
							88398 AT000QQK	1
				(SC332) Wiring Inspection + Wiring Replacement + Protective Covering Installation	251017R1*	4.9 M/H	91961 L8140QQK	1
							88398 AT000QQK	1
							82315 2P000	5
85859 3S500	2							
Refer to EPC for Floor Harness PN from page 9	1							
SG2 EV	R	91515 A0412	0	(SC332) Wiring Inspection + Protective Covering Installation	251017R2	0.6 M/H	91961 CV520QQK	1
							91961 J9820QQK	1
							91599 AOT3LQQK	2
							88398 AT000QQK	1
				(SC332) Wiring Inspection + Wiring Replacement + Protective Covering Installation	251017R3*	5.3 M/H	91961 CV520QQK	1
							91961 J9820QQK	1
							91599 AOT3LQQK	2
							88398 AT000QQK	1
							82315 2P000	5
							85859 3S500	2
Refer to EPC for Floor Harness PN from page 9	1							

Note: Refer to [Warranty Bulletin 2025-05](#) for claim submission procedures. If substitute transportation is necessary, manually enter sublet code 'X2' for rental expense reimbursement or one roundtrip rideshare expense. Please consult your DPSM if extended rental assistance is needed. *A photo of the 'NG' condition, as described in this TSB MUST be attached to the claim using Warranty Claim Attachment Type 'XX - Other' for LOPs 251017R1 and 251017R3. If a photo of the NG condition is not created as described in this TSB, Warranty claim submission issues will occur. All claims are subject to review and Warranty chargeback.

NOTICE

VIN inquiry data for this repair is provided for tracking purposes only. Kia retailers should reference **SC332** when accessing the KDealer+ system.

