

To: Mercedes-Benz Dealer Principals, General Managers, Sales Managers, Service Managers, Parts Managers	From: Anthony Washington, Senior Manager, Regulations and Certifications
Re: Launch Recall Campaign Notification Model: Sprinter Model Years: 2024 Inspect Parking Brake Bracket	Date: April, 2025



Mercedes-Benz

IMPORTANT RECALL CAMPAIGN INFORMATION

Please see the attached documents related to the campaign listed above.

Please refer all customer inquiries to the Customer Care Center at 1-800-FOR-MERCEDES.



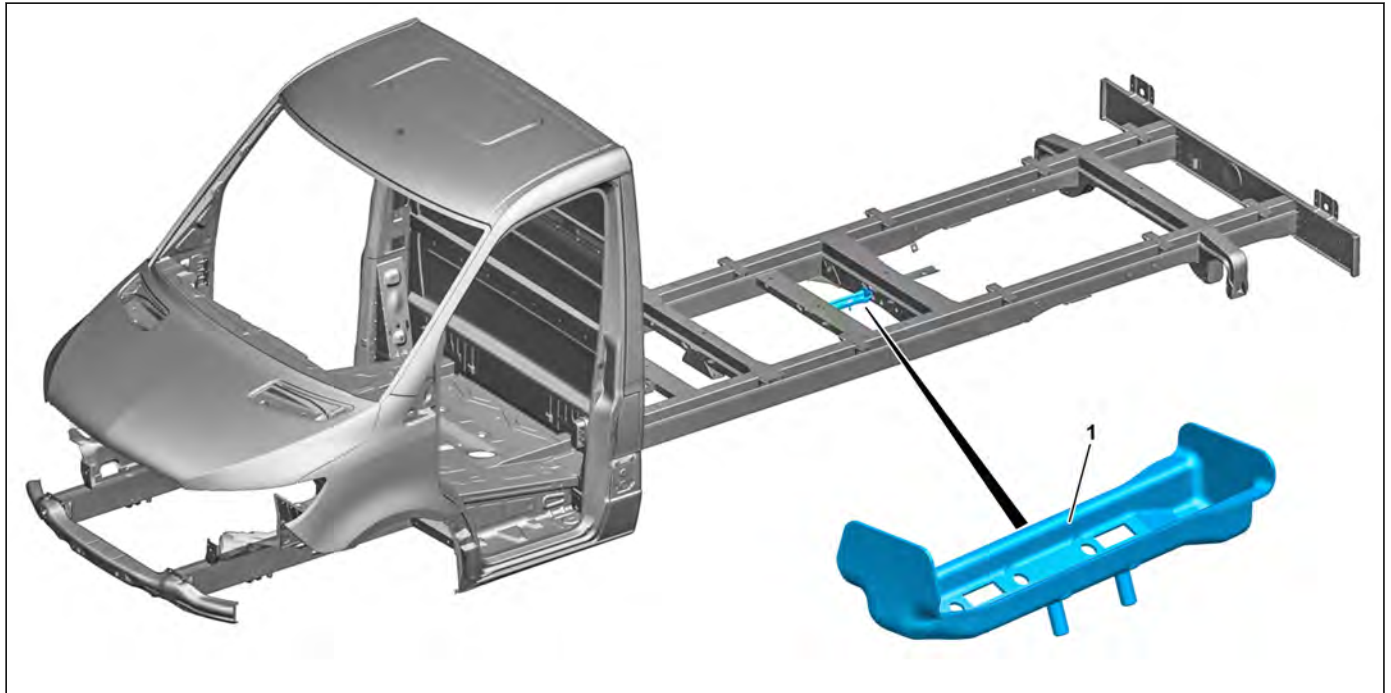
Campaign No.:	Campaign Desc.:	NHTSA ID:	Inspect Parking Brake Bracket
2025030011	VS3HALHAN	25V135	
<p>This is to notify you of a Recall Campaign to inspect the parking brake bracket on approximately 88 MY 2024 Sprinter Vans. The recall campaign will be visible on the www.NHTSA.gov website and may generate questions from customers. All affected VINs will be flagged as "OPEN" in VMI and cannot be sold until remedied.</p>			
Background			
Issue	<p>Mercedes-Benz AG, the manufacturer of Mercedes-Benz vehicles, has determined that on certain Sprinter vehicles (907 platform), certain spot welds that attach the parking brake cable bracket to the underbody frame might not meet current production specifications. In this case, the bracket may loosen over time and result in a reduced brake hold force when the parking brake is engaged, which might increase the risk of a crash. Subsequently, the performance requirements of FMVSS 105 S5.2 might not be met.</p>		
What We're Doing	<p>MBUSA is conducting a voluntary recall. As a precautionary measure, an authorized Mercedes-Benz Sprinter dealer will check the parking brake bracket on the affected vehicles and rework it, if necessary.</p>		
Parts	<p>Parts are available and can be ordered as necessary.</p>		
Vehicles Affected			
Model Year(s)	2024		
Vehicle Model	Sprinter		
Vehicle Populations			
Population	88		
Dealer Inventory	48		
<p>Given this notice, it is a <u>violation of Federal law</u> for a dealer to sell or lease any <u>new</u> vehicles in dealer inventory covered by this notification until the vehicle has been repaired.</p> <p>Loaner and demonstrator vehicles may continue to be driven, but must not be retailed until repaired.</p> <p>Additionally, given this notice, it is a <u>violation of Federal Law</u> for rental companies to rent new vehicles covered by this notification until the vehicle has been repaired.</p>			
Next Steps/Notes			
Customer Notification Timeline	An owner notification letter to be mailed in late April 2025.		
AOMS/SOMS	AOMs – This recall may generate questions from your dealers.		
Rental Fleet Partners	This recall may affect vehicles in your fleet. Please contact your respective MBUSA fleet representative for further information and next steps. For repairs, please contact your preferred MBUSA dealer.		
<p>While we regret any inconvenience this may cause, we are determined to maintain a high level of vehicle quality and customer satisfaction.</p>			



Model 907.1/2

Operation no. of the operation texts or standard texts and flat rates

Category	Op. no.	Operation text	Time	Damage Code	Codeword
L	12 2207	Operations: Subsequently reinforce holder for brake compensator lever	0.8 h	42 930 09	VS3HALHAN



D42.20-A003-79

Shown on model 907.1

1 Brake compensator lever holder

⚠ Danger	Risk of death caused by vehicle slipping or toppling off of the lifting platform.	Align vehicle between vehicle lift columns and position the four support plates at the vehicle lift support points specified by the vehicle manufacturer.	AS00.00-Z-0010-01A
⚠ Caution	Risk of injury caused by scraping or cutting body parts on sharp vehicle parts	Always wear protective gloves when working on or near sharp and non-deburred vehicle parts. Deburr repair panels.	AS00.00-Z-0017-01A
ℹ Notice	General information on body repair		AH60.00-P-0001-01KOA
🔍 Check	Check if vehicle is affected by measure.		

	Remove		
2	Remove detachable parts in area of repair point.	If necessary. Depending on the body condition of the vehicle, it may be necessary to remove detachable parts such as the retarder. The relevant operation items for removal/installation must be determined separately and taken into account when invoicing.	
3	Raise vehicle. Special instructions for lifting and supporting vehicle AR WS 000 588 26 80 00 Adapter WS 000 588 41 80 00 Adapter WS 000 588 27 80 00 Adapter		AH00.60-P-0100-01TS AR00.60-D-1000-04TS WS00.00-Z-0067KOB WS00.00-P-0321B WS00.00-P-0068B
	Install		
4	Danger Risk of explosion caused by paint vapors igniting. Risk of poisoning caused by inhaling paint vapors. Subsequently reinforce brake compensator lever holder (1). Notes on paintwork repairs	No smoking! No open fire! Use respiratory protection, protective clothing, gloves, safety glasses and protective skin cream. Ensure that the area is well ventilated. Subsequently rivet brake compensator lever holder (code: VS3HALHAN, acc. no.: 42 930 09) Commercially available devices/ tools Drill bit 3 mm Drill bit 7 mm Wet and dry vacuum cleaner	AS98.00-Z-0002-01A Page 3 AH98.00-P-9408-02A
5	Clean repair area.	Commercially available devices/ tools Wet and dry vacuum cleaner	
6	Lower vehicle.		
7	Install detachable parts in the area of the repair point.	If necessary.	

Parts ordering note

Part no.	Designation	Quantity
A 000 991 96 02	Rivet	1
A 000 986 32 01 09	Preservation agent	1
	Additional replacement part scopes, small parts and consumable materials required for carrying out this service measure must be replaced in accordance with the information in the repair documents referenced in this document. These must be determined according to the vehicle identification number (FIN) via the "XENTRY Parts Information" system and, whilst not listed in the parts ordering note, they are included in the costing.	

Model 907.1/2

i Refer to the superordinate service document for further information.
Observe safety notes in the superordinate service document.

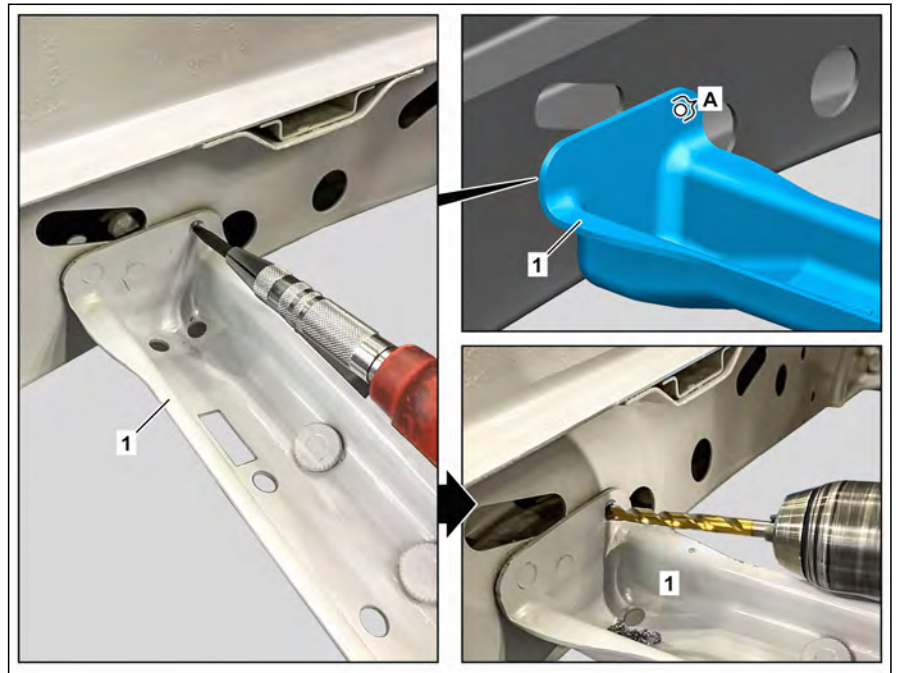
- 1 Center punch brake compensator lever holder (1) in area (A).
i **Orientation aid:** Sheet metal tab of brake compensator lever holder (1) shown here points toward rear of vehicle.
i When positioning center punch mark, apply dimension of opposite spot weld on brake compensator lever holder (1). Leave sufficient distance to edge for a bore with $\varnothing 7$ mm.

- 2 Drill $\varnothing 7$ mm hole in area (A).
i Pre-drill hole with $\varnothing 3$ mm.

i **Commercially available devices/tools**
Hand drill

- 3 Remove drill chips.
i **Commercially available devices/tools**
Wet and dry vacuum cleaner

- 4 Deburr bore and apply primer.
i Use only primer fillers approved by manufacturer. See guidelines for paint technology in the workshop portal.



D42.20-A004-76

- 5 Place blind rivet (2) in area (A) on brake compensator lever holder (1).

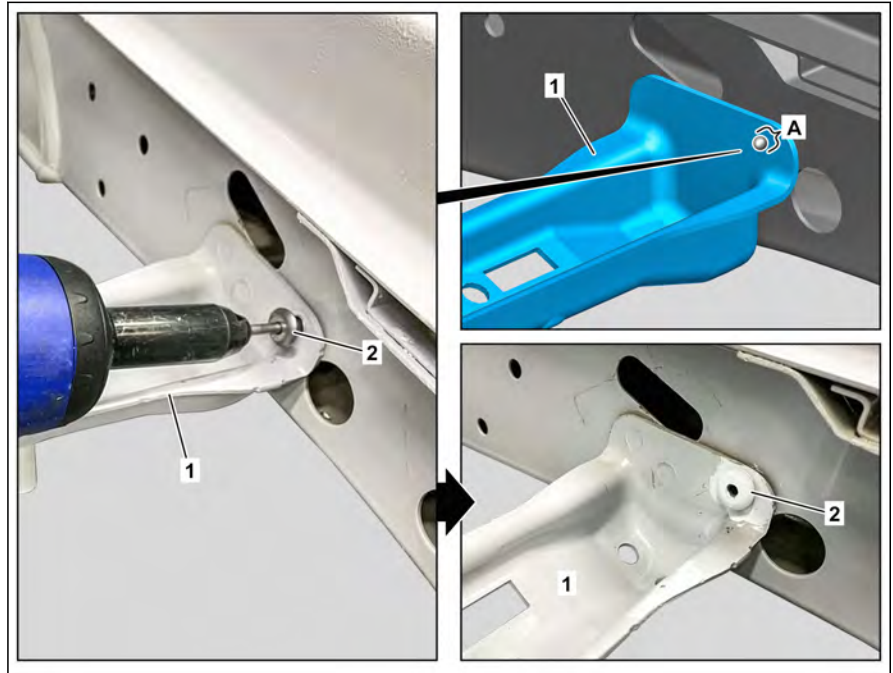
i Commercially

available devices/tools

Pneumatic/electric blind rivet gun

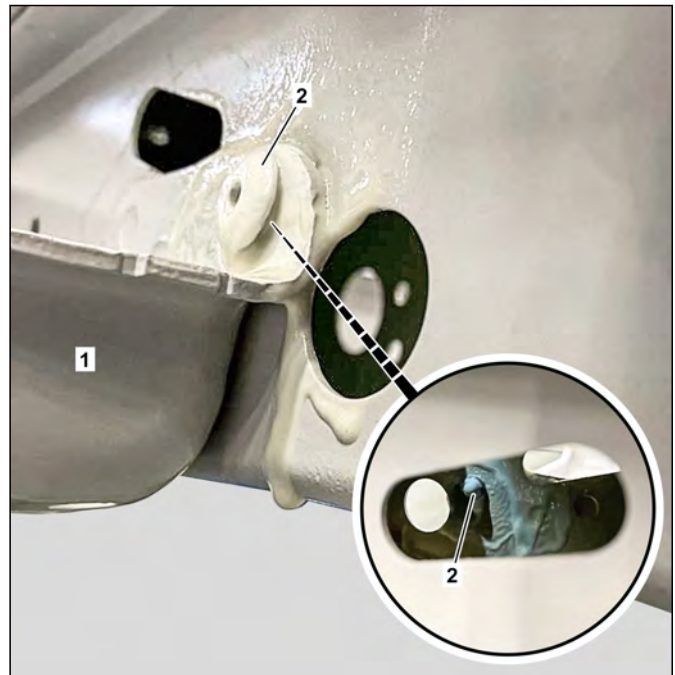
- 6 Apply primer to blind rivet (2) and brake compensator lever holder (1) using a brush.

i Use only primer fillers approved by manufacturer. See guidelines for paint technology in the workshop portal.



D42.20-A005-76

- 7 Apply wax to outside and inside of blind rivet (2), crossmember and brake compensator lever holder (1).



D42.20-A006-82