



## Recall Information Bulletin

No: C10129 Issued: 2/25/2025

NHTSA No: 25V037

Transport Canada No: N/A

**SUBJECT:**

Safety Recall C10129 – Fuse Box Water Invasion

**MODELS:**

FEC7K (E16L/E16M), FEC9K (E18L/E18M)

**VEHICLES INVOLVED:**

Certain 2024 model year FEC7K and FEC9K trucks.

A list of vehicles your Dealership has sold that require this Recall can be found on the “Open Campaigns” list supplied by RIZON. Some individual vehicles described above may not need the Recall as the repairs may have already been performed. Always check the vehicle information section in DealerPro, or they may contact Rizon Warranty at [rizonwarranty@rizontruck.us](mailto:rizonwarranty@rizontruck.us) to verify that the VIN requires this Safety Recall.

**Important note: It is a violation of Federal law for a dealer to deliver a new or used motor vehicle covered by this Recall Information Bulletin, under a sale or lease, until the Safety Recall has been completed.**

**OWNER NOTIFICATION:**

Owners of affected vehicles will be notified by mail.

**CONDITION:**

Mitsubishi Fuso Truck of America, Inc. has decided that a defect, which relates to motor vehicle safety, exists in the sealing method of the fuse box wiring harness on certain 2024 model year FEC7K (E16L/E16M) and FEC9K (E18L/E18M) RIZON trucks. Improper sealing may allow water to leak into the chassis harness through the opening around a branch point and subsequently enter the high current relay and fuse box. In the worst case, the EV system may shut down leading to an eventual stop without the possibility of restart, increasing the risk of a crash.

**MODIFICATION:**

The harness will be covered with a vinyl sheet to prevent water from entering the corrugated tube. Also, waterproof tape will be added to the branch, as the vinyl tape at the branch may be damaged. If water invasion is noted, the fuse box will be dried. If there is rust in the fuse box, the fuse terminals will be cleaned and the relays will be replaced.

**PARTS REQUIRED:**

1) LT226A02EX Vinyl sheet, 0-1) LT226B02EX Relay kit (if the relay has been contaminated with water)

**RECALL CLAIM SUBMITTAL:**

Upon completion of a recall or field fix repair, a warranty claim must be submitted to Rizon US through the DealerPro system or manually through our interim process. It is important to use the appropriate claim type, e.g. Recall or Field Fix and Recall/Field Fix number. The claim will be processed by Rizon and reimbursement will be completed using the reimbursement schedule used for your standard warranty claims. If you need support submitting a claim or have general claim questions, please contact Rizon US Warranty Department at [rizonwarranty@rizontruck.us](mailto:rizonwarranty@rizontruck.us).

Campaign Reimbursement					
Campaign Number	Models	Allowances		Labor Description	Part Number
C1012910	FEC7K FEC9K	Labor Time	1.2 hours	Cover the harness with a vinyl sheet and add waterproof tape to the branch.	LT226A02EX
C1012920	FEC7K FEC9K	Labor Time	1.8 hours	Cover the harness with a vinyl sheet and add waterproof tape to the branch. Replace relays.	LT226A02EX LT226B02EX
C1012930	FEC7K FEC9K	Labor Time	2.1 hours	Cover the harness with a vinyl sheet and add waterproof tape to the branch. Replace relays. Clean terminals.	LT226A02EX LT226B02EX

**REPAIR PROCEDURE:**

1. Park the vehicle on a flat, level surface, turn off the engine and chock the wheels.

**CAUTION!**

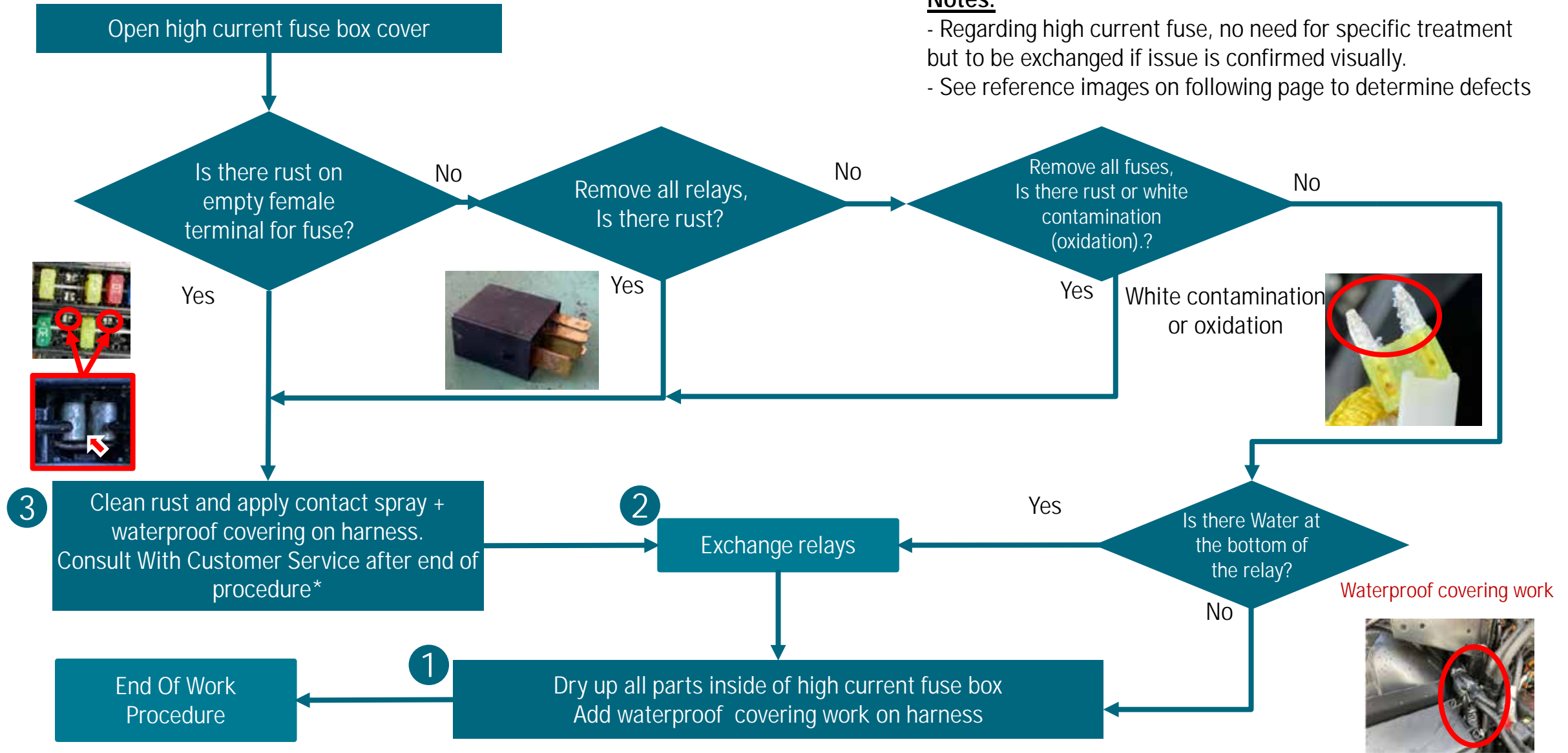
**Do not remove the wheel chocks until all modification work has been completed.**

2. Waterproof the wiring harness, inspect and repair the relays and connections using instructions found in the Modification Procedure on the next page.

# MODIFICATION PROCEDURE

**Notes:**

- Regarding high current fuse, no need for specific treatment but to be exchanged if issue is confirmed visually.
- See reference images on following page to determine defects

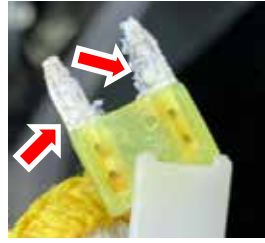


# Reference images for possible failures

## Criteria for Fuse cleaning:



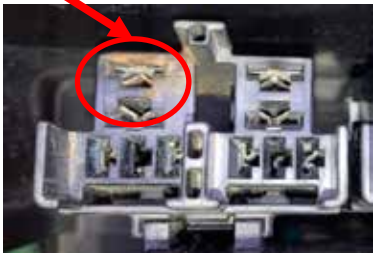
Rust (green)



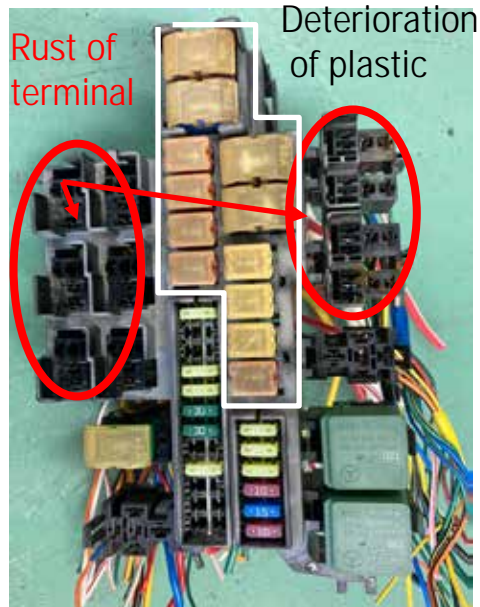
Contamination

- Rust (corrosion) has happened on female terminal of fuse.
- White contamination has happened on fuse.
- High current fuse has no major issue.

Rust is visible around terminal



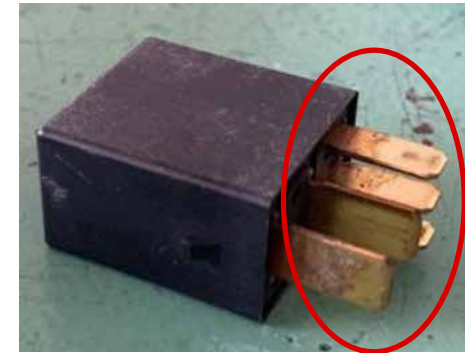
The outside surface of relay terminals have rusted



## Exchange criteria of Relay:



Water has reached the bottom of relay.



Water noticed at bottom of relay terminals

### ③ Activities to be followed when rust noticed in the terminal(s) of relay(s) and fuse(s)

If green rust is found on the surface of the fuse terminals, take the following measures

- 1: Remove all fuses
- 2: Clean the fuse terminals with a brush. Do not use a metal brush.
- 3: Insert and remove each fuse five times.
- 4: Apply electronic cleaner to the fuse terminals.
- 5: Apply contact spray to the fuse terminals.
- 6: Insert new fuses into the fuse holder.

**Continue with the rest of the work procedure and once completed, inform RIZON Service of presence of rust on Fuses and Relays for consultation after completing work procedure.**



1<sup>st</sup> Remove all Fuses



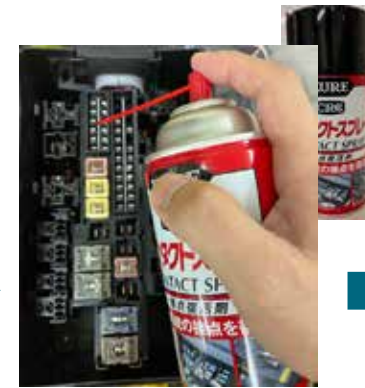
2<sup>nd</sup> Clean the fuse terminals with a brush



3<sup>rd</sup> Remove and insert the fuse five times



4<sup>th</sup> Apply electronic cleaner like KURE 3012 or TUNAP375 or its equivalent



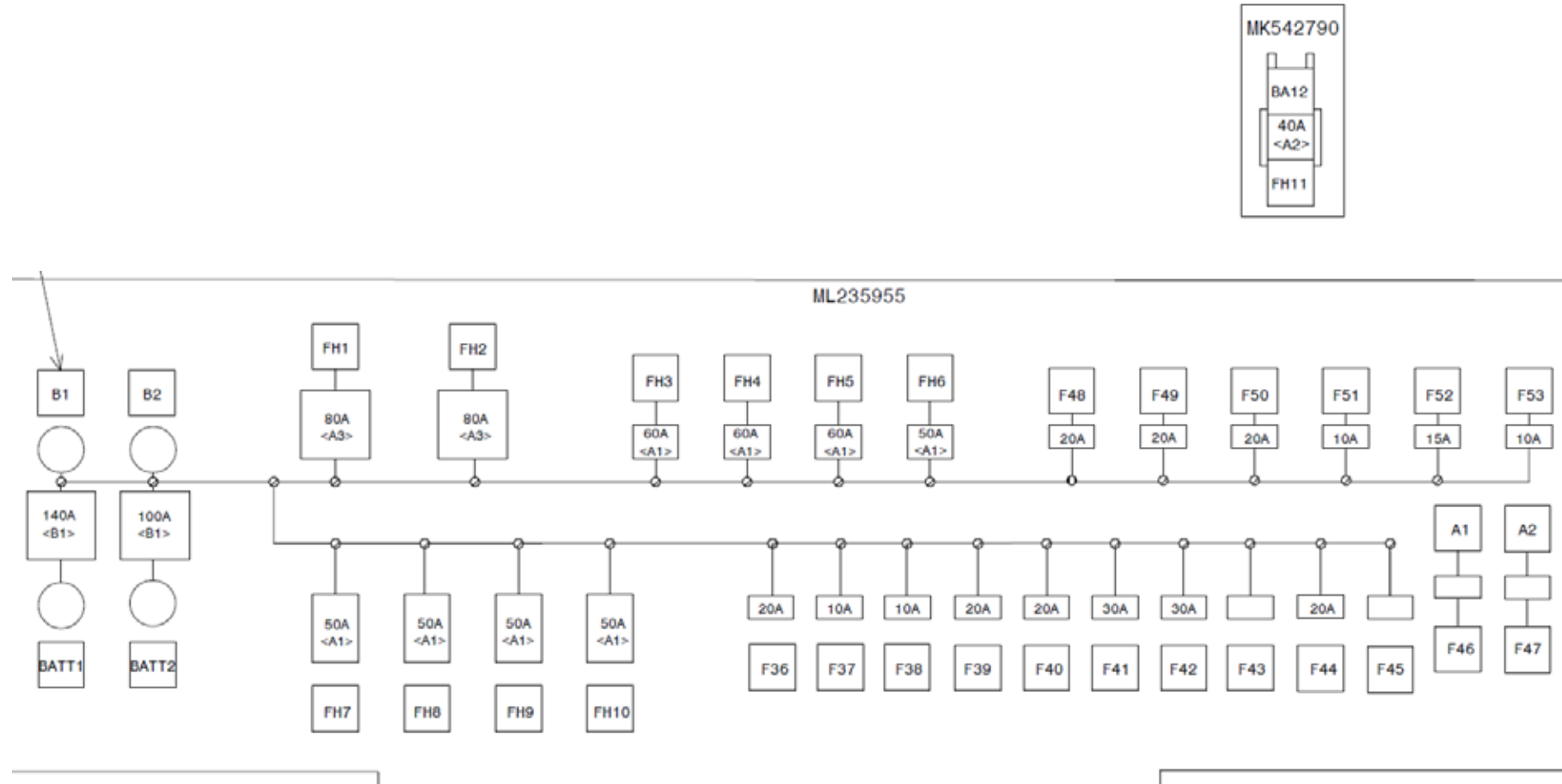
5<sup>th</sup> Apply contact spray like KURE 1047 or its equivalent



6<sup>th</sup> Insert new fuses

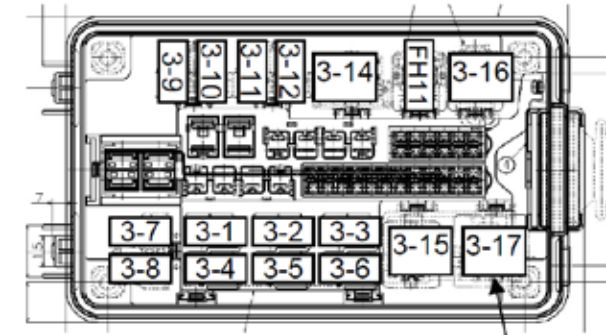
### 3 Reference Guide for Fuse placement

FUSE TYPE	PART NO.	REMARK
HIGH CURRENT FUSE 140A	MH056243	B1 LARGE TYPE
HIGH CURRENT FUSE 100A	MH056241	B1 LARGE TYPE
HIGH CURRENT FUSE 80A	MH056237	A3 MIDDLE TYPE
HIGH CURRENT FUSE 60A	MH056234	A1 TYPE
HIGH CURRENT FUSE 50A	MH056233	A1 TYPE
HIGH CURRENT FUSE 40A	MH056170	A2 TYPE
HIGH CURRENT FUSE 20A	MH056230	A1 TYPE
MINI FUSE 30A	MS810880	
MINI FUSE 20A	MS810878	
MINI FUSE 15A	MS810877	
MINI FUSE 10A	MS810876	



## 2 Replacement of Relay

1. Pull the relays and check for water at the bottom of relay.
2. If a relay has water accumulated at the bottom, replace the affected relay on a case-by-case basis.
3. Replace the relay with the appropriate spare part by referring to the image and table



High Current Fuse Box ⚠

Relay fixed by  
MX986720  
⚠ SPRING CLIP (from MY24)

3-1	A/C Compressor clutch relay	12V/24V	Micro ISO	MK387280	with A/C	AIR CONDITIONER	M78E02	○	○	○	○
3-2	W/P (EDM)	12V/24V	Micro ISO	MK387280	All	COOLING	M25C01	○	○	○	○
3-3	KL15 Virtual	12V/24V	Micro ISO	MK387280	All	COOLING	M25C01	○	○	○	○
3-4	W/P (HVB)	12V/24V	Micro ISO	MK387280	All	COOLING	M25C01	○	○	○	○
3-5	Chiller Shut off Valve	12V/24V	Micro ISO	MK387280	All	COOLING	M25C01	○	○	○	○
3-6	W/P (HVAC)	12V/24V	Micro ISO	MK387280	All	AIR CONDITIONER	M78E16	○	○	○	○
3-7	Avoid to use this area due to relay defect by vibration (especially high load current and/or frequent switching) according to Pre C-sample evaluation										
3-8											
3-9	CONDEBSER FUN 2-1	12V/24V	Micro ISO	MK387280	All	AIR CONDITINER	M78E16	○	○	○	○
3-10	3/2Way Valve (HVB)1	12V/24V	Micro ISO	MK387280	All	COOLING	M25C01	○	○	○	○
3-11	CONDENSER FUN 2-2	12V/24V	Micro ISO	MK387280	All	AIR CONDITIONER	M78E16	○	○	○	○
3-12	HVAC Shut off Valve	12V/24V	Micro ISO	MK387280	All	AIR CONDITIONER	M78E16	○	○	○	○
3-13											
3-14	VCU main relay	12V/24V	Mini ISO	MX950085	All	VCU	M89J61	○	○	○	○
3-15	Vacuum pump relay 1	12V/24V	Mini ISO	MX950085	All	BRAKE	M23E20	○	○	○	○
3-16	Vacuum pump relay 2	12V/24V	Mini ISO	MX950085	All	BRAKE	M23E20	○	○	○	○
3-17	EPL Actuator	12V/24V	Mini ISO	MX950085	All	eAxle	M13B50	○	○	○	○

# 1 Dry up process

Step-1:

Remove the High Current Fuse Box from bracket and tilt it for collecting water.



Vehicle side

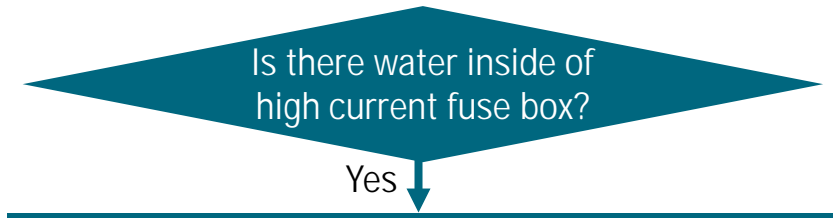
Step-2:

Remove water inside of High Current Fuse.



Step-3:

Dry out the High Current Fuse Box three times with paper towels



Dry up all parts inside of high current fuse box

Step-4:

Blow air at a distance of 30cm from High Current Fuse Box for longer than 1 min.

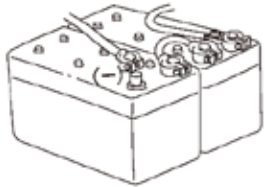


Step-5:

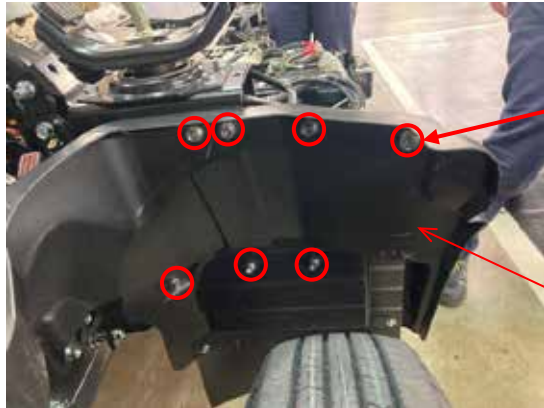
Remove the paper towels and keep the cover open. Close cover after no missing water was confirmed.

# 1 Covering work on harness

Disconnect the negative terminal of the battery.



Remove the mudguard.

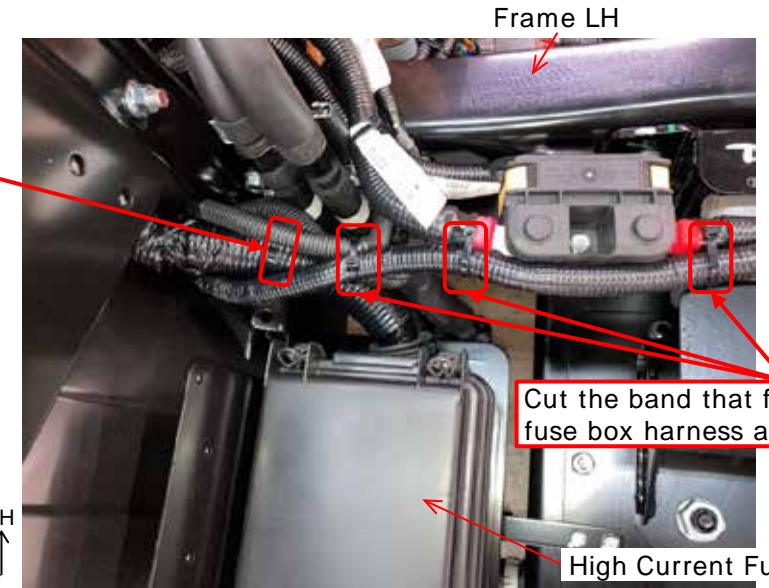


Remove the 7 nuts that fix the mudguard and remove the mudguard.

Mudguard LH

Cut the existing fixing band for the harness.

Cut and remove the band clip that fixes the high current fuse box harness.

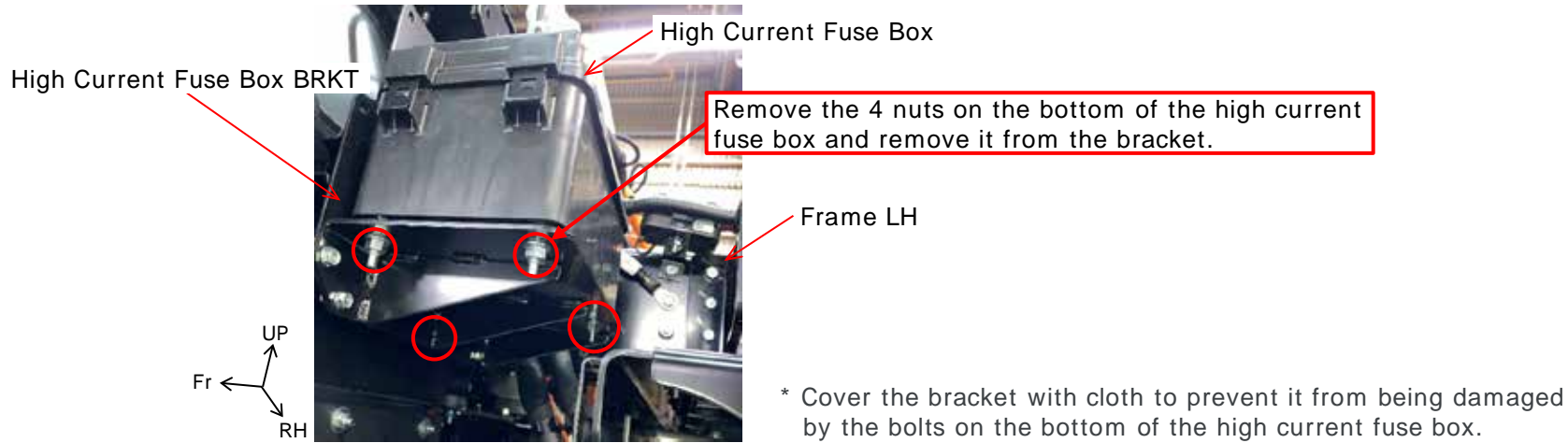


Cut the band that fixes the high current fuse box harness and battery harness.

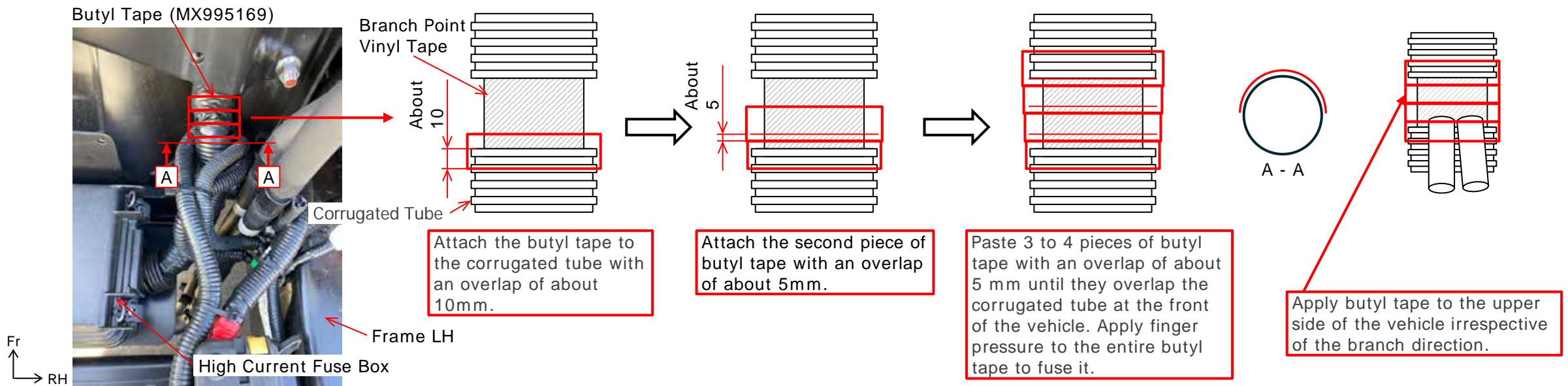
High Current Fuse Box

**Decommissioning of High Voltage line not required for covering work**

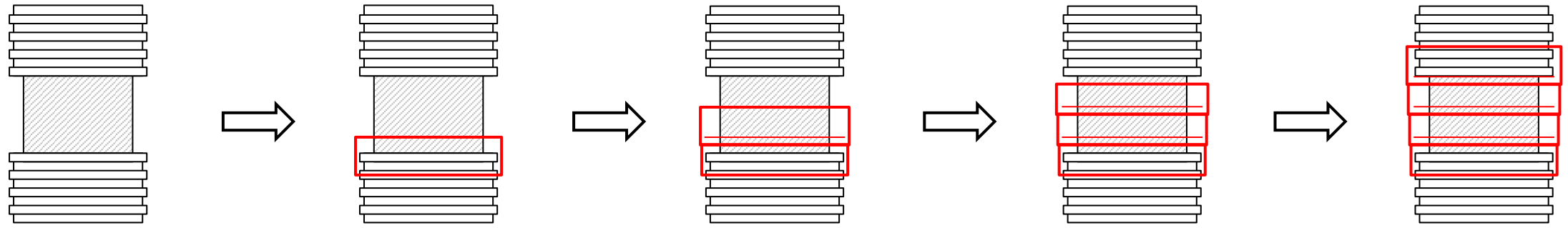
Remove the high current fuse box from the bracket.



Apply butyl tape (MX995169) to the vinyl tape on the branch point.



Apply butyl tape (MX995169) to the vinyl tape on the branch point.



Install a vinyl sheet 200 x 180 (MX995167) between the branch point and the high current fuse box.

Wrap the vinyl sheet (MX995167) around the harness.

Fix both ends of the vinyl sheet with bands (MK663741).

Branch Point

180

Vinyl sheet

UP

Install the vinyl sheet so that the overlapping part is on the bottom of the vehicle.

To avoid damaging the vinyl sheet that will be attached in the next step, cut the end of the band so that it is not exposed from the lock part.

Lock part

Band

Lock part

Band

High Current Fuse Box

Fr UP RH

Install a vinyl sheet 200 x 200 (MX995168) over the harness branch point.

Fix the vinyl sheet with the band (MK663741).

Fix the vinyl sheet with the band (MX000004).

existing harness fixing band

Branch Point

Align the end of the vinyl sheet (MX995168) with the existing harness fixing band and wrap it around the harness.

Vinyl sheet

UP

Install the vinyl sheet so that the overlapping part is on the bottom of the vehicle.

Existing harness fixing band

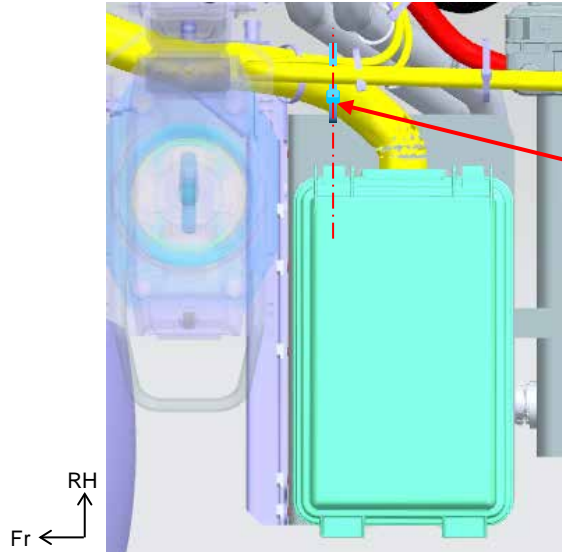
High Current Fuse Box

Fr UP RH

High Current Fuse Box

Fix the vinyl sheet with the band (MK663741).

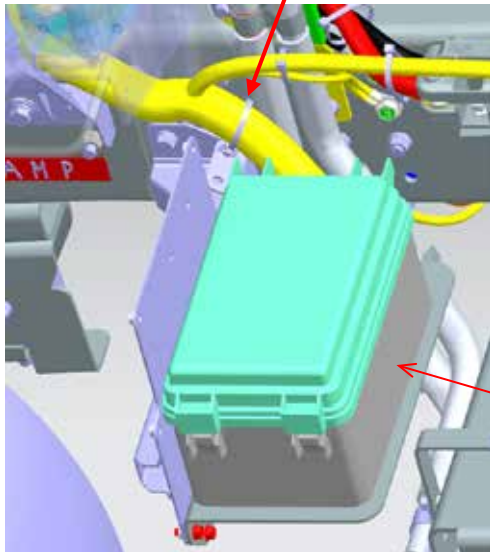
Reinstall the parts removed in steps to to restore the vehicle.



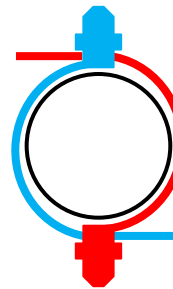
Fix the vinyl sheet to the harness with the band (MK663741) in line with the position of the vehicle front side clamp of the high current fuse box lid.

Fix harness to bracket with band clip (MK677891).

Fix harness to bracket with band clip (MK677891).



High Current Fuse Box



If the band clip is too short to fix the harness, use two band clips to fix the harness.