



Spartan Fire, LLC



**RECALL SERVICE BULLETIN
RSB24-330-004**

DATE: 7/26/2024

APPLIES TO: This service bulletin applies to certain model year 2018-2019 Gladiator and Metro Star model emergency response chassis cabs built between March 22, 2018 and October 30, 2018.

NHTSA/TC Id: 24V453

CONDITION: Certain vehicle configurations may fail to comply with service brake application timing requirements identified in Federal Motor Vehicle Safety Standard No. 121 – Air Brake Systems.

CORRECTION: Replace and reroute air brake lines.

LABOR ALLOCATION: 1 hour

CLASSIFICATION: E3

PARTS NEEDED:

Nylon Air Lines

<u>QTY</u>	<u>Part Number</u>	<u>Description</u>
2	0716-MM5-C07	Fit Brss M 45D Elbow 8-6
2	0716-MM5-C08	Fit Brss M 45D Elbow 8-8
2 FT	2517-MM5-021	Nylon Tube – ½” Red

Wire Braided Air Lines

<u>QTY</u>	<u>Part Number</u>	<u>Description</u>
2	0716-MM5-DD05	Fit Brss M Elbow 8-6
2	0716-MM5-DD06	Fit Brss M Elbow 8-8
4	0722-MM5-L03	Fit Strt Reus Hose End 8-8
2FT	0724-MM5-G03	Hose266 SAE J14202 -8 T/C 410 S/S

Service Bulletins are intended for use by Professional Technicians only. They are written to guide Professional Technicians in performing service to vehicles of specific nature in conjunction with industry standards. Professional Technicians are appropriately trained on industry standards and have the tools and equipment to perform procedures safely and properly.



Spartan Fire, LLC



GENERAL INSTRUCTIONS:

Thoroughly review entire service bulletin before starting work. If there are questions or concerns with steps defined in this service bulletin, contact Spartan Fire, LLC. Customer & Product Support Group.

All applicable industry safety standards must be followed when performing work identified in this procedure.

STEP-BY-STEP INSTRUCTIONS:

1. Properly support chassis to gain access to work underneath.
2. Locate air tanks and drain all air from tanks.
3. Disconnect the hose and fittings from the quick release valve delivery ports and the modulator valve supply ports. *See Figure 2.1*

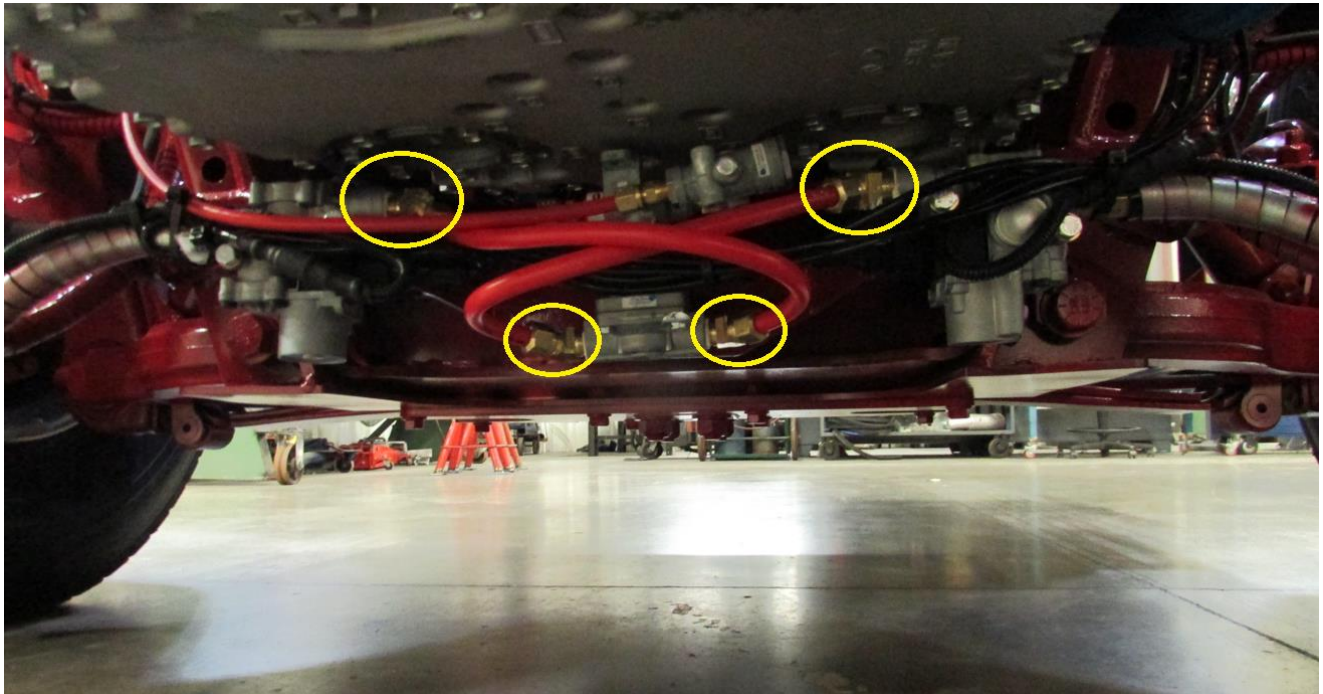


Figure 2.1

Service Bulletins are intended for use by Professional Technicians only. They are written to guide Professional Technicians in performing service to vehicles of specific nature in conjunction with industry standards. Professional Technicians are appropriately trained on industry standards and have the tools and equipment to perform procedures safely and properly.



Spartan Fire, LLC



4. Install fitting 0716-MM5-C08 (nylon) or 0716-MM5-DD06 (wire braid) into the modulator supply ports.
5. Install Fitting 0716-MM5-C07 (nylon) or 0716-MM5-DD5 (wire braid) into the quick release valve delivery ports.
6. Install 1/2" air line between the quick release valve and the modulator valves. *See Figure 3.1*

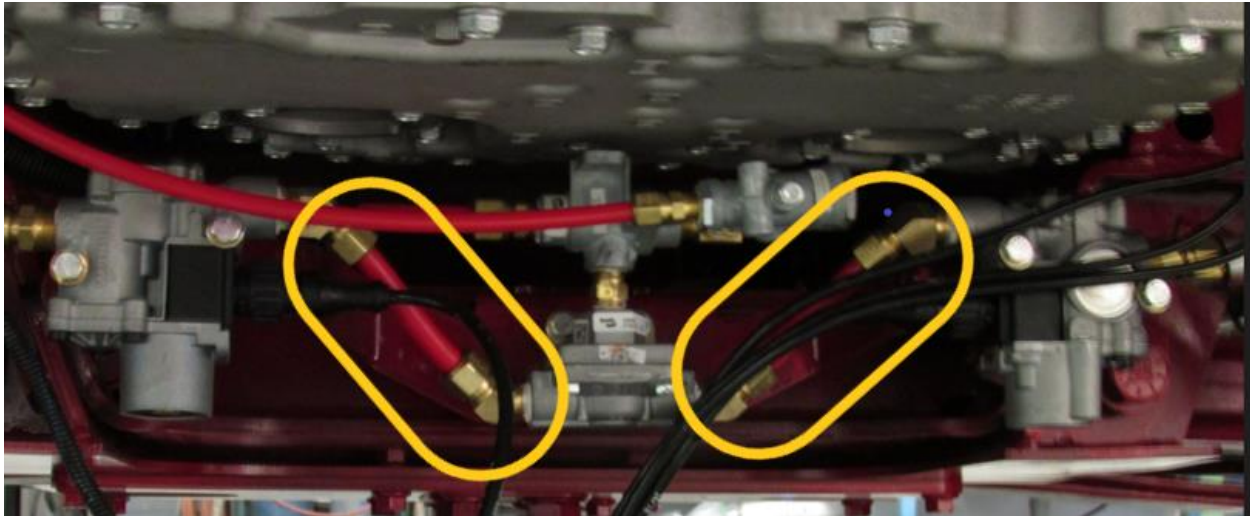


Figure 3.1

7. Fill air system and check for air leaks
8. Connect with Wabco Toolbox and use the directions below to ensure front abs modulators are functioning properly.

Service Bulletins are intended for use by Professional Technicians only. They are written to guide Professional Technicians in performing service to vehicles of specific nature in conjunction with industry standards. Professional Technicians are appropriately trained on industry standards and have the tools and equipment to perform procedures safely and properly.



The Active Braking Valves can be cycled using WABCO TOOLBOX™ Software.

To cycle the ABVs, choose the option "Valves" from the "Component Tests" drop-down menu. Figure 5.26. Or if you are using TOOLBOX™ Software version 11 or higher, from "Components". Figure 5.27.

Fig. 5.26

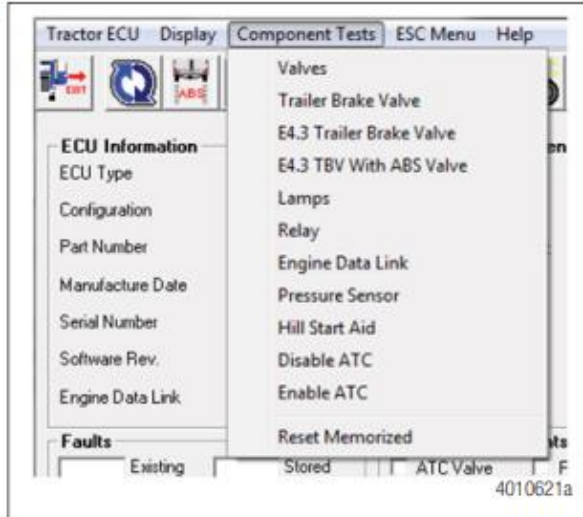
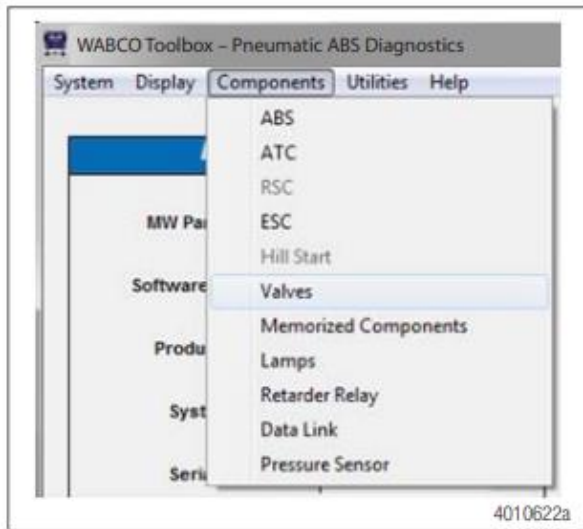


Fig. 5.27



Service Bulletins are intended for use by Professional Technicians only. They are written to guide Professional Technicians in performing service to vehicles of specific nature in conjunction with industry standards. Professional Technicians are appropriately trained on industry standards and have the tools and equipment to perform procedures safely and properly.



The valve selection screen will appear where you can choose to cycle Front Axle ABV, Rear Axle ABV or Trailer ABV individually. Figure 5.28 or Figure 5.29.

Then, listen to ensure the correct valve is cycling. This is helpful in verifying correct operation, installation and wiring.

Fig. 5.28

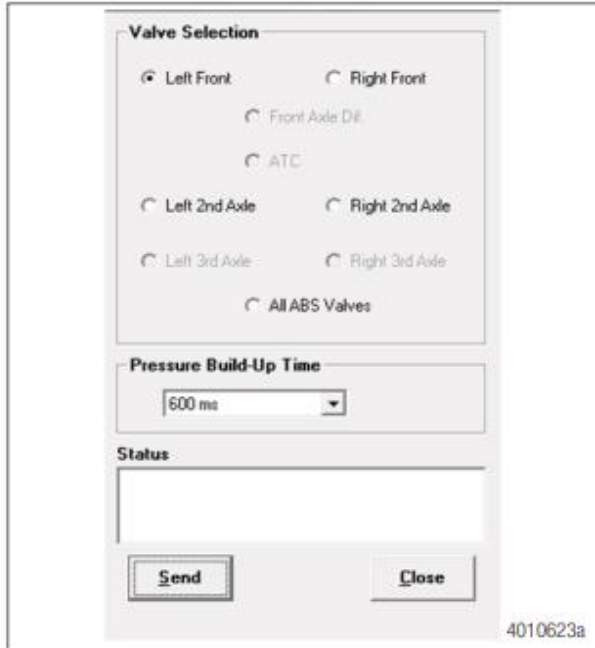


Fig. 5.29



Service Bulletins are intended for use by Professional Technicians only. They are written to guide Professional Technicians in performing service to vehicles of specific nature in conjunction with industry standards. Professional Technicians are appropriately trained on industry standards and have the tools and equipment to perform procedures safely and properly.