



# Service Bulletin

American Honda Motor Co., Inc.

CBR600 #2  
Revised: December 2024

## SAFETY RECALL

### 2018-2020 CBR600RR/RA Fuel Pump Replacement

#### BACKGROUND

Honda is launching a **SAFETY RECALL** on **CERTAIN** 2018-2020 CBR600RR/RA motorcycles to replace the fuel pump assembly. Due to a manufacturing defect, the impeller inside the fuel pump can warp or swell when exposed to fuel causing the impeller to lock in place and prevent fuel flow to the engine. A locked impeller can cause the engine to stall without warning while riding, potentially increasing the risk of a crash or injury.

#### AFFECTED UNITS

As of February 9, 2024, **YOU MUST NOT SELL CERTAIN NEW or USED** 2018-2020 CBR600RR/RA motorcycles until they are repaired according to this Service Bulletin.

- To search for applicable recalls on a specific unit, you **MUST** use *Unit Information on iN*.
- To manage your affected new inventory, use your dealer *eResponsibility Report on iN*.

#### CUSTOMER NOTIFICATION

American Honda has mailed customer letters to all owners of affected 2018-2020 CBR600RR/RA motorcycles in April 2024. Customers were informed that their motorcycle is affected by a safety related defect and will be advised to make an appointment with an authorized Honda dealer for repair.

#### PARTS INFORMATION

Order the fuel pump kit below for all affected units using the normal parts ordering process.

Model	Description	Part Number	Qty.
2018-2020 CBR600RR/RA	Fuel Pump Kit	06160-MFJ-305	1
<b>Kit Includes:</b>			
Description	Part Number	Qty.	
Assembly, Fuel Pump Unit	16700-MFJ-D03	1	
Packing, Fuel Pump	17574-MFJ-D00	1	
Seal, Outer	17576-MFJ-D00	1	
Damper, Connector	16719-MFJ-D00	1	
Retainer	17711-S0X-931	1	

NEW

#### DEALER REPAIR RESPONSIBILITY

- Repairs must be performed by a qualified technician.
- Performing this repair exactly as shown in Repair Procedure instructions is critical for the remedy to be effective. Carefully follow all instructions.
- Service Management should inspect and confirm the repair.
- Dealer submission of a warranty claim affirms this repair was properly performed.

**WARRANTY CLAIM INFORMATION**

After completing this *Service Bulletin* update, submit one warranty claim per unit with the following template number.

MODEL	TEMPLATE	FLAT RATE
2018-2020 CBR600RR/RA	Replacement: KP8A	1.1

**Note:** All KP8A warranty template claims will reimburse freight. To ensure your dealership receives the freight credit, follow these steps.

1. Make sure 'YES' is selected from the *Freight Involved* drop down window.
2. Make sure to include the *Part Order Reference Number*.
3. Include the freight *Amount* associated with the listed *Part Order Reference Number*.
  - The *Part Order Reference Number* can be found on your *Parts Order Statement* on *iN*.

\* = Required      Template Warranty Claim

Template Number\*

Basic Claim Information (required for all claim types)

Claim No.\*       Repair Order Number\*

VIN\*       Repair Order Date (open)\*  /  /

Mileage\*       Work Completed Date\*  /  /

Sublet Involved?

Freight Involved?       Freight Information

Part Order Reference Number\*       Amount\*  0.00

**DEALER SUPPORT**

**TECHNICAL QUESTIONS**

If you have any technical questions relating to this update procedure, please contact: Motorcycle TechLine Online:

***iN > Service > TechLine > TechLine > TechLine Connect***

Or call (800) 421-1900, option 9

**WARRANTY QUESTIONS**

If you have any warranty administration questions relating to warranty claim templates, and claim filing procedures, please contact:

Motorcycle Warranty Online:

***iN > Service > Warranty & HondaCare > Warranty Connect Filing***

Or call (800) 421-1900, option 7

**FUEL PUMP REPLACEMENT**

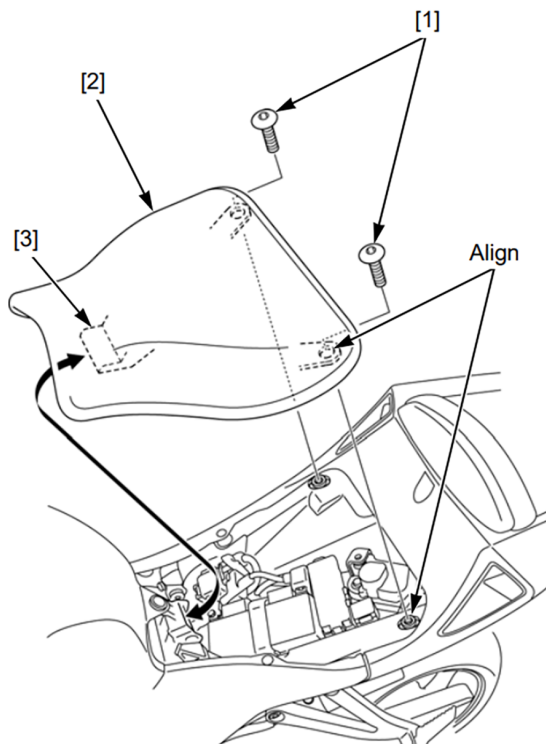
**FUEL REMOVAL / REFILL**

Remove as much fuel as possible from the fuel tank.

**Drain the fuel into a clean container for refilling the tank after procedure is complete.**

**SEAT REMOVAL / INSTALLATION**

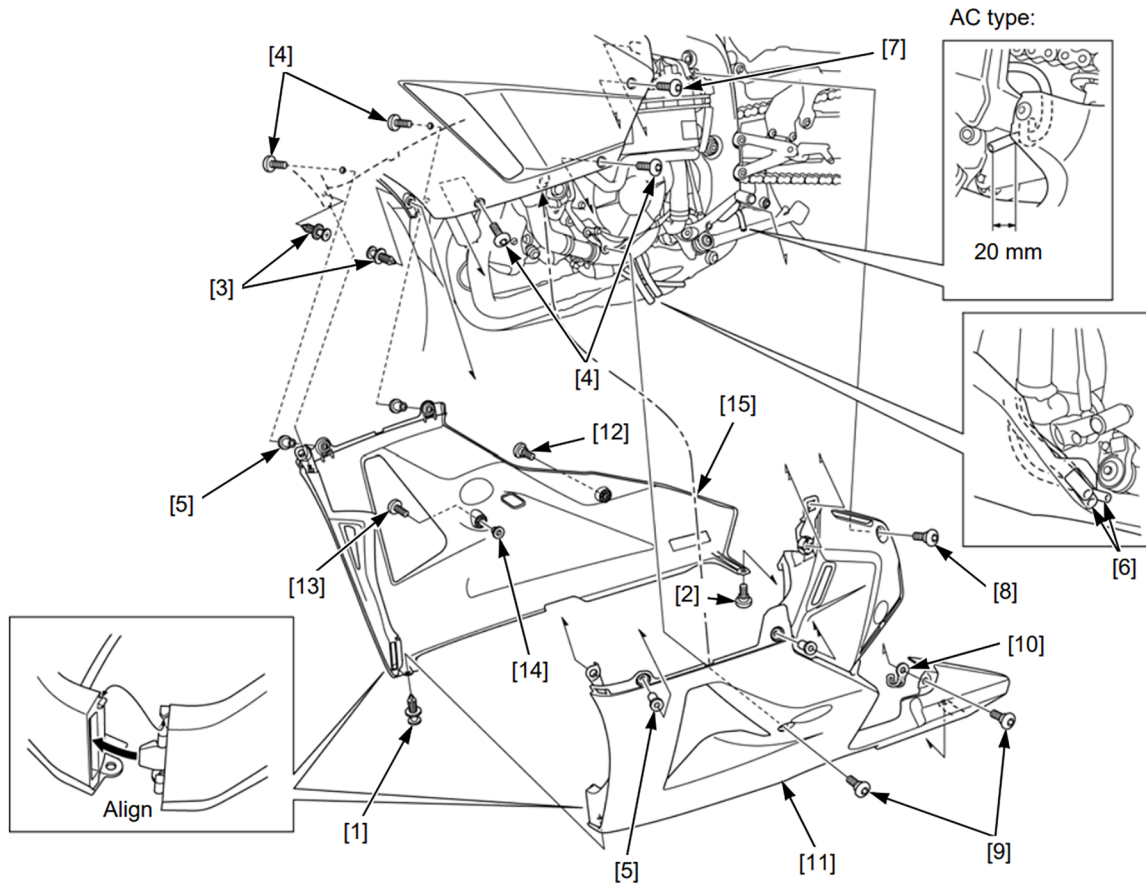
1. Remove the screws [1].
2. Remove the seat [2] by sliding it rearward.



Installation is the reverse order of removal. Be sure the tab [3] slides into the slot during installation.

## LOWER COWL REMOVAL/INSTALLATION

1. Remove the trim clip [1] and right-to-left lower cowl special screw [2].
2. Remove the inner middle cowl-to-inner lower cowl trim clips [3], middle cowl-to-lower cowl screws [4] and nuts [5].
3. Left side:  
Release the hoses [6] from the lower cowl. Remove the screw [7] and special screw [8] (ABS type). Remove the special screws [9], clamp [10] (AC type) and left lower cowl [11].
4. Right side:  
Remove the special screw [12], screw [13], collar [14] and right lower cowl [15].



5. Installation is in the reverse order of removal.

- Align the tabs and slits of the lower cowls.
- Route the hoses properly.

### TORQUE:

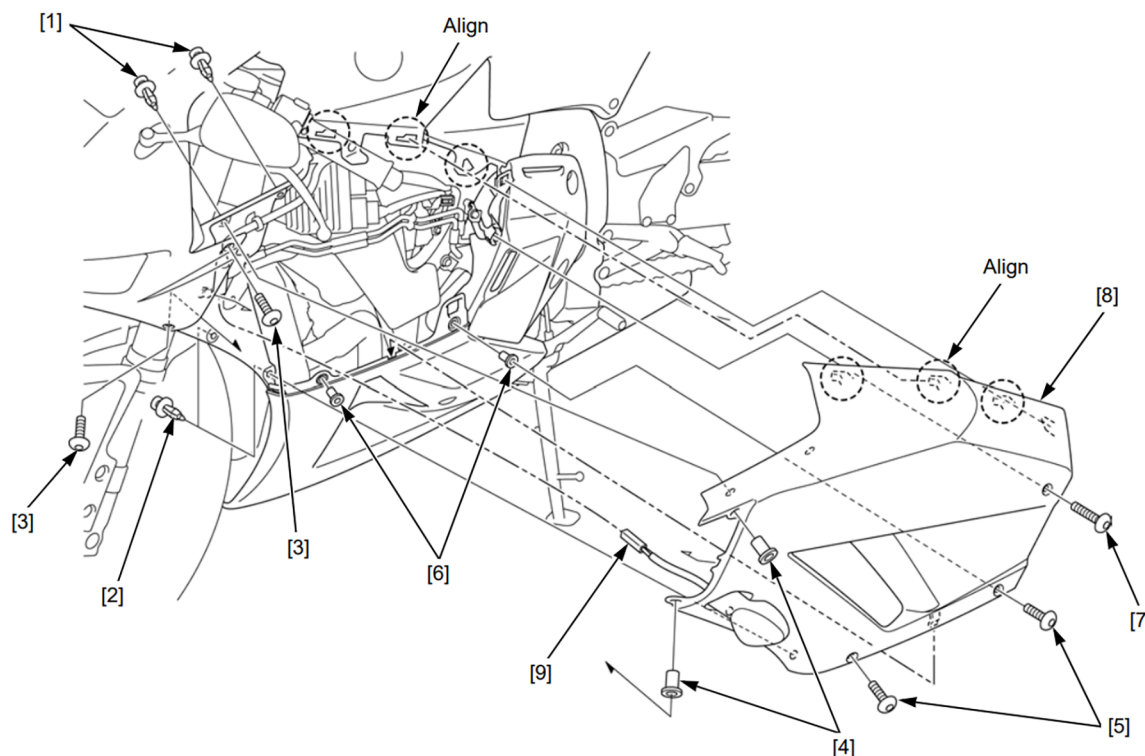
Middle cowl-to-lower cowl screw: 1.5 N·m (0.2 kgf·m, 13 in·lb)

Right-to-left lower cowl special screw: 1.5 N·m (0.2 kgf·m, 13 in·lb)

### **MIDDLE COWL REMOVAL/INSTALLATION**

1. Remove the following:

- Inner upper cowl-to-middle cowl trim clips [1]
- Inner middle cowl-to-middle cowl trim clip [2]
- Upper cowl-to-middle cowl screws [3] and nuts [4]
- Middle cowl-to-lower cowl screws [5] and nuts [6]
- Middle cowl screw [7] and middle cowl [8]
- Disconnect the turn signal 2P connector [9]



2. Installation is in the reverse order of removal.

#### **NOTES:**

- Align the hooks with the slits.
- Route the wires properly.
- Be careful not to pinch the wires.

#### **TORQUE:**

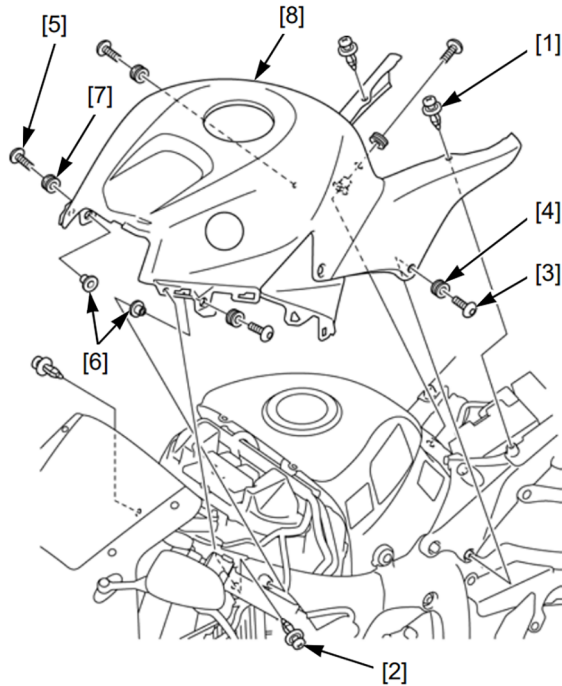
Upper cowl-to-middle cowl screw: 1.5 N·m (0.2 kgf·m, 13 in·lb)

Middle cowl-to-lower cowl screw: 1.5 N·m (0.2 kgf·m, 13 in·lb)

## TOP SHELTER • SIDE COVER REMOVAL / INSTALLATION

Remove the following:

- Top shelter-to-rear fender B trim clips [1]
- Inner upper cowl-to-top shelter trim clips [2]
- Screws [3] and grommets [4]
- Screws [5], collars [6] and grommets [7]
- Top shelter/side cover assembly [8]



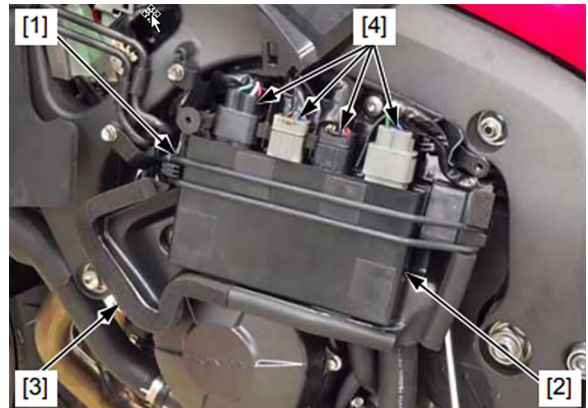
Installation is in the reverse order of removal.

### NOTE:

Be careful not to pinch the wires.

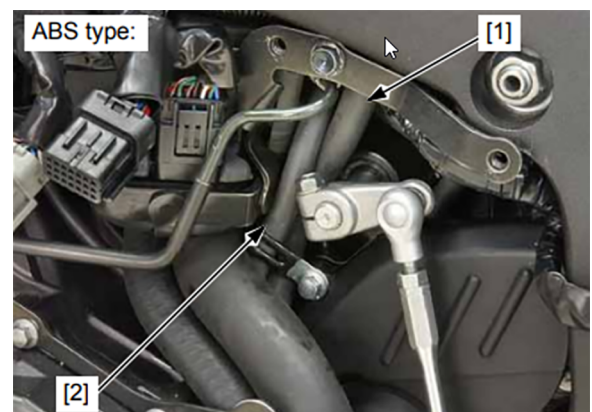
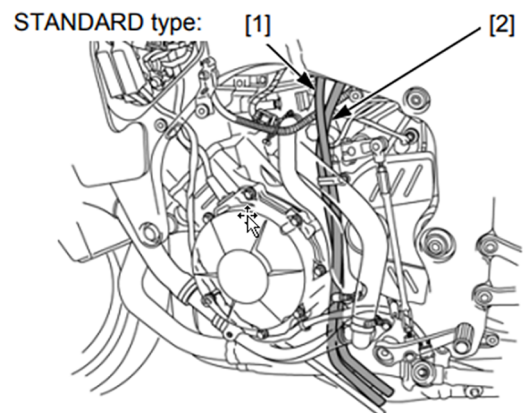
## COMBINED ABS CONTROL UNIT REMOVAL / INSTALLATION

1. Remove the holder band [1].
2. Release the Combined ABS control unit [2] from the tray [3].
3. Disconnect the four connectors [4] and remove the Combined ABS control unit.



## FUEL TANK LIFTING / LOWERING

1. Release the fuel tank breather hose [1] and drain hose [2].



2. Remove the fuel tank mounting bolts [3] and washers [4].

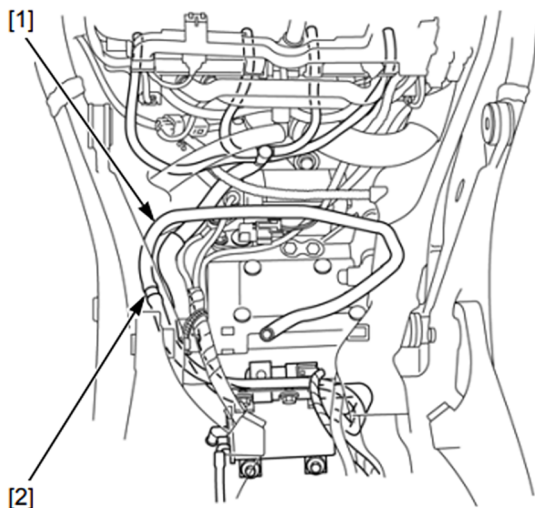
The washers have different O.D.:

- Left side: larger O.D.
- Right side: smaller O.D.



**AC Type (STANDARD-type):**

Disconnect the fuel tank breather hose [1] (to EVAP canister) from the hose joint [2].



**AC Type (ABS-type):**

Disconnect the fuel tank breather hose [1] (to EVAP canister) from the hose joint [2].

Lift the front end of the fuel tank and support it using a suitable support [1] as shown.

Lowering is in the reverse order of lifting.



**NOTES:**

- Guide the breather hose and drain hose so as not to be kinked or bound.
- Route the hoses properly.
- Be careful not to damage the harness and hoses.
- After installing the fuel tank, make sure the breather, drain and fuel hoses are not kinked or bound.

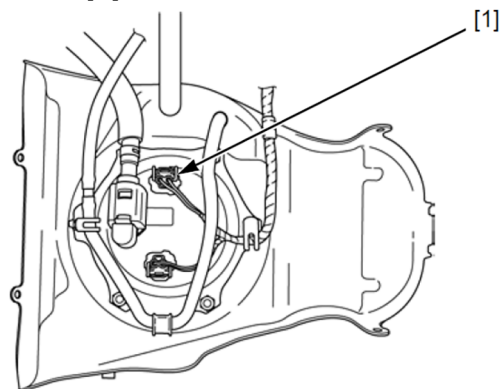
**TORQUE:**

Fuel tank mounting bolt:  
30 N·m (3.1 kgf·m, 22 ft·lb)

**FUEL PRESSURE RELIEVING / QUICK CONNECT REMOVAL**

Before disconnecting the fuel hose, relieve any fuel pressure from the system as follows:

1. Turn the ignition switch OFF.
2. Disconnect the fuel pump 2P (Brown) connector [1].



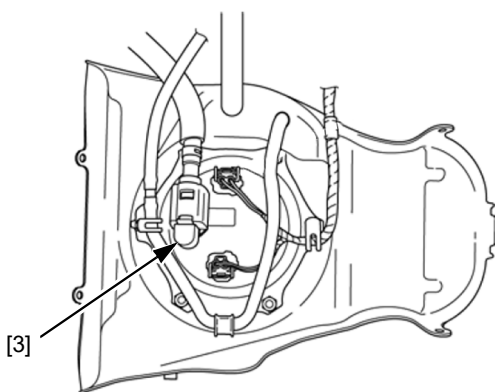
3. Start the engine and let it idle until the engine stalls.
4. Turn the ignition switch OFF.
5. Disconnect the battery negative (-) cable [2].



[2]

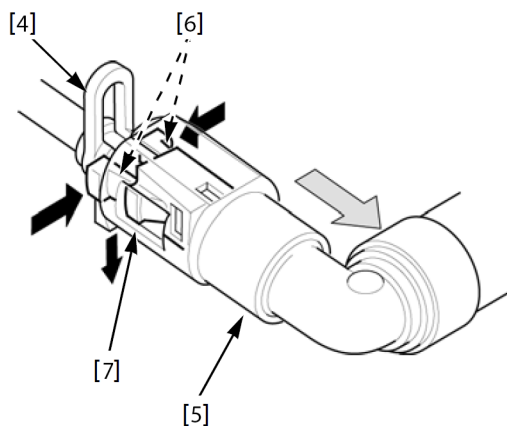
6. Check the fuel quick connect fitting [3] on the fuel pump side for dirt, and clean if necessary.

Place a shop towel over the quick connect fitting to prevent any fuel spray.



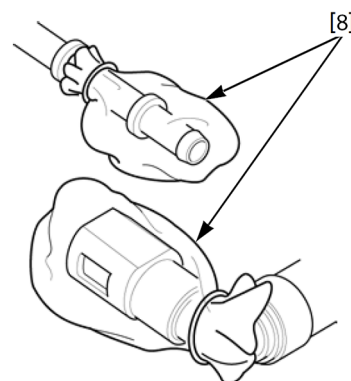
[3]

7. Pull and release the rubber cap [4] from the retainer.
8. Hold the connector [5] with one hand and squeeze the retainer tabs [6] with the other hand to release them from the locking pawls [7]. Pull the connector off, then remove the rubber damper and retainer from the fuel joint.



#### NOTES:

- Absorb the remaining fuel in the fuel hose from flowing out with a shop towel.
  - Be careful not to damage the hose or other parts.
  - Do not use tools.
  - If the connector does not move, keep the retainer tabs pressed down, and alternately pull and push the connector until it comes off easily.
9. To prevent damage and keep foreign matter out, cover the disconnected connector and fuel joint with plastic bags [8].

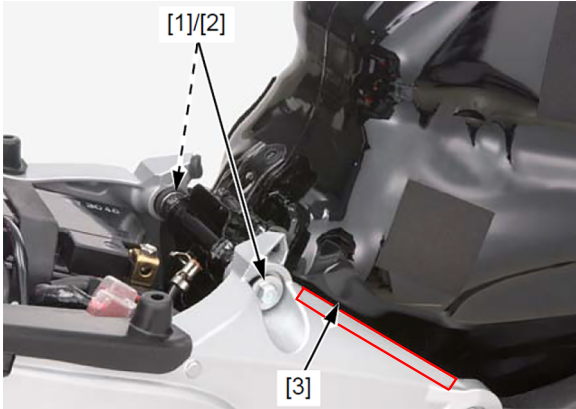


### FUEL TANK REMOVAL

1. Disconnect the fuel level sensor 2P (Black) connector [1]
2. Remove the fuel tank pivot bolts [1], washers [2] and fuel tank [3].

**NOTE:**

Use tape on each side of the frame (in the area below highlighted in red) to prevent scratches when removing the fuel tank.



Installation is in the reverse order of removal.

### QUICK CONNECT FITTING INSTALLATION

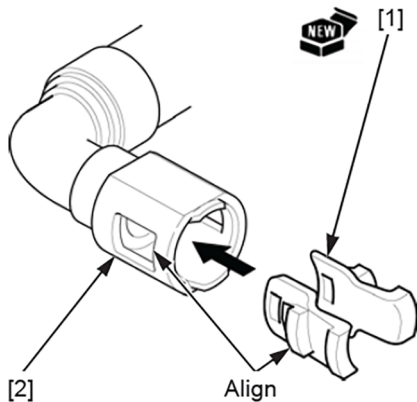
**NOTES:**

- Replace the retainer and the rubber cap with a new one.
- Do not bend or twist the fuel feed hose.

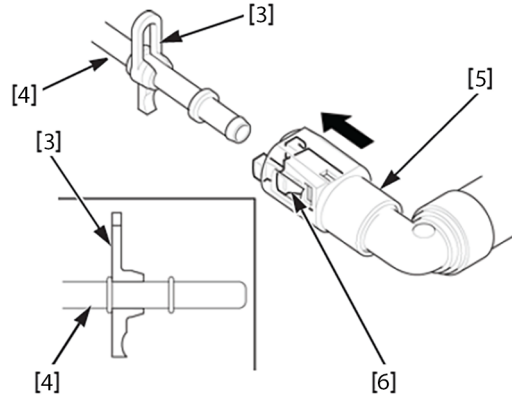
1. Insert a new retainer [1] into the connector [2].

**NOTE:**

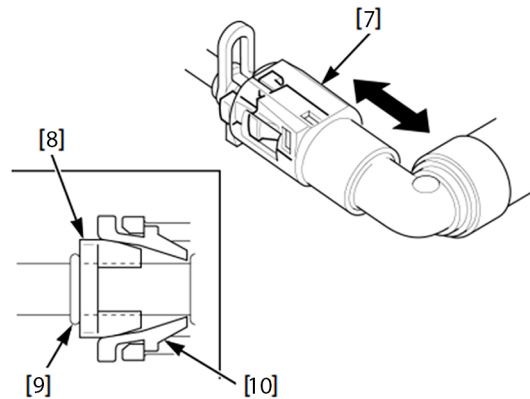
Align the retainer locking pawls with the connector grooves.



2. Install the rubber damper [1] and seat it onto the fuel joint [2] as shown. Align the quick connect fitting [3] with the fuel joint. Then press the quick connect fitting onto the pipe until both retainer pawls [4] lock with a "CLICK". If it is hard to connect, put a small amount of engine oil on the pipe end.



3. Make sure the connection is secure and that the pawls are firmly locked into place; check visually and by pulling the connector [1].
4. Make sure the rubber damper [2] is in place (between the flange [3] and retainer tab [4]).



## FUEL PUMP UNIT REMOVAL

1. Disconnect the breather hose [1] and drain hose [2] from the fuel tank.



2. Remove the following:

- Nuts [3]
- Wire clamps [4]
- Hose guide [5]
- Setting plate [6]



3. Remove the fuel pump unit [7] and packings [8].

**NOTE:**  
Be careful not to damage the pump wire and fuel level gauge.



## FUEL PUMP UNIT INSTALLATION

Place new packings [1] onto the fuel pump unit [2].

**NOTE:**  
Replace the old packing with new ones.



Install the fuel pump unit to the fuel tank.

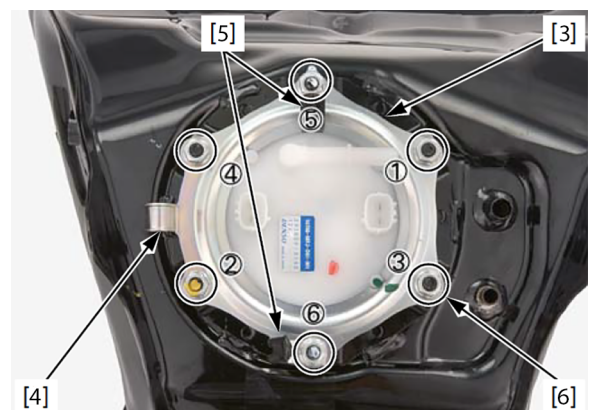
**NOTICE:**  
Be careful not to damage the pump wire and fuel level gauge.

4. Install the following:

- Setting plate [3]
- Hose guide [4]
- Wire clamps [5]
- Nuts [6]

5. Tighten the nuts in the specified sequence to the specified torque.

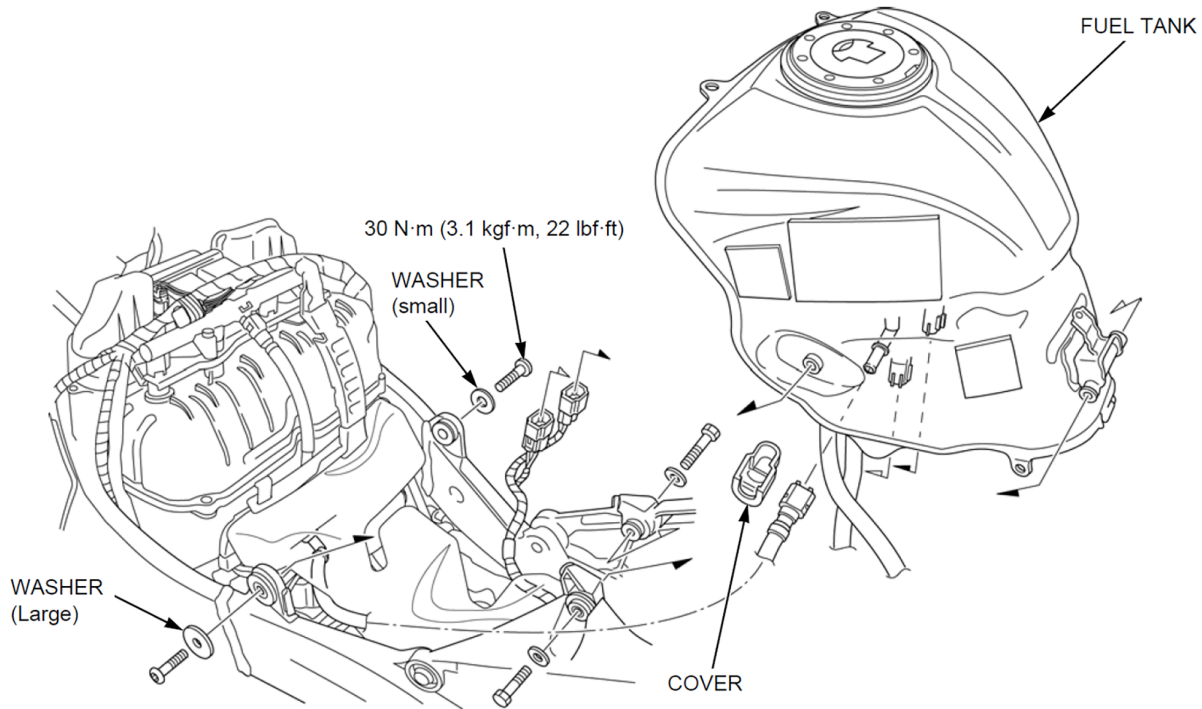
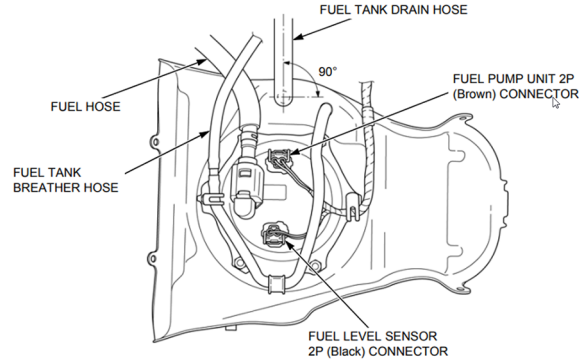
**TORQUE:**  
12 N·m (1.2 kgf·m, 106 in·lb)



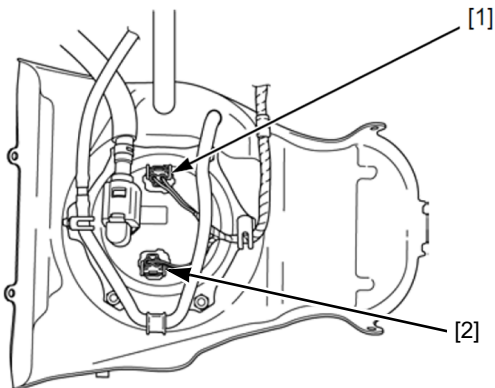
**FUEL TANK INSTALLATION**

Installation is in the reverse order of removal.

1. Connect the breather hose [7] and drain hose [8] to the fuel tank securely.
2. Route the hoses properly.

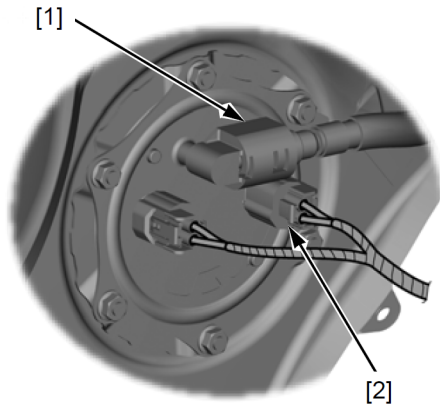


3. Connect the fuel pump 2P (Brown) connector [1] and fuel level sensor (Black) connector [2].

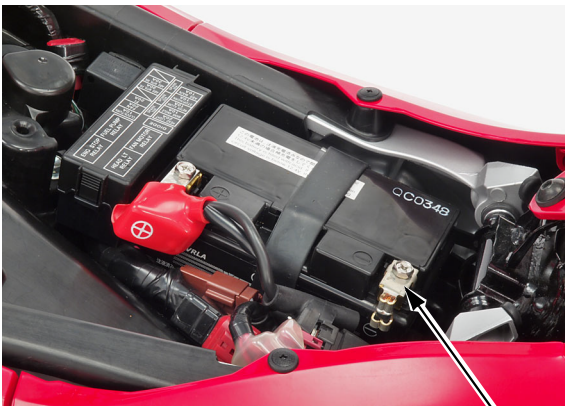


## FUEL PRESSURE NORMALIZATION

1. Install the quick connect fitting cover [1] (fuel pump side only).



2. Connect the battery negative (-) cable [2].



3. Turn the ignition and engine stop switches ON.

The fuel pump will run for about 2 seconds and fuel pressure will rise.

### NOTE:

Do not start the engine.

4. Turn the ignition switch OFF.
5. Repeat two or three times, and check that there is no leakage in the fuel supply system.
6. Install the following:
  - Top shelter / side cover
  - Lower cowl
  - Middle cowl
  - Main seat
7. Adjust the clock on the meter if it reset.

8. For California registered vehicles, please fill out the Vehicle Emission Recall - Proof of Correction certificate (example shown on page 12) and provide it to the customer after the Safety Recall repair has been completed.



## IMPORTANT SAFETY RECALL

This notice applies to your vehicle: XXXXXXXXXXXXXXXXXXXX

April 2024

Dear FIRSTNAME LASTNAME,

This notice is sent to you in accordance with the National Traffic and Motor Vehicle Safety Act, Honda has decided that a defect which relates to motor vehicle safety exists in certain 2018-2020 model year CBR600RR and 2018-2019 CBR1000RR motorcycles.

**Why my vehicle is under recall:** The fuel pump module may have an improperly molded impeller. Over time the impeller can deform and cause the fuel pump to become inoperable.

### Safety Consequence:

An inoperable fuel pump could prevent an engine from starting, cause a vehicle to lose drive power or stall while driving, increasing the risk of a crash or injury.

### What Honda will do:

Your Honda Powersports dealer will replace the fuel pump module, for **FREE**. Honda estimates that the repair will take approximately 1 hour to complete. However, your dealer can provide you with a better estimate of the overall time for this service visit, as it may be necessary to make your vehicle available for a longer period of time.

### What we need you to do:

Please call any authorized Honda Powersports dealer and schedule an appointment to have your vehicle repaired for **FREE**.  
If you are not the only rider of this vehicle, please advise all other riders and passengers of this important information.

### California Owners Only

The DMV will not renew your vehicle's registration until this recall has been completed. After completing the repair procedure, your dealer will give you a Vehicle Emission Recall - Proof of Correction certificate. Please make sure the dealer provides you with a completed certificate. Keep the certificate for your records as proof that the recall was completed. Submit the certificate to the DMV only if the DMV requests it.

### Emission Warranty

In order to ensure your full protection under the emission warranty provisions, it is recommended that you have your vehicle repaired as soon as possible. Failure to do so could be determined as lack of proper maintenance.

- Check recall information for your motorcycle by accessing the Honda recall lookup tool at <https://powersports.honda.com/recalls> and entering your Vehicle Identification Number (VIN).
- If you have questions or concerns, we encourage you to:
  - visit <https://powersports.honda.com/recalls>; or
  - contact your local Honda Powersports dealer; or
  - send Customer Relations a message via <https://powersports.honda.com/contact-us>; or
  - call American Honda's Powersports Customer Relations at 1-866-784-1870 Monday through Friday, 8:30 a.m. to 4:30 p.m., Pacific Time.

If you paid out of pocket to have these specific recall repairs performed on your vehicle, you may be eligible for reimbursement; please contact American Honda's Powersports Customer Relations at 1-866-784-1870 to determine potential eligibility and for instructions on how to request reimbursement.

If you no longer own this vehicle or if any of the information is not correct, please complete and return the enclosed prepaid Information Change Card as soon as possible. If you are a lessor of this vehicle, federal regulations require you to forward this notice to your lessee within ten days.

If you believe that American Honda or the dealer has failed or is unable to remedy the defect in your vehicle, without charge and within a reasonable period of time (60 days from the date you first contact the dealer for a repair appointment), you may submit a complaint to the Administrator, National Highway Traffic Safety Administration (NHTSA), 1200 New Jersey Ave., SE, Washington, DC 20590. Alternatively, you may call the NHTSA toll-free Vehicle Safety Hotline at 1-888-327-4236 (TTY 1-800-424-9153) or go to <http://www.safercar.gov>.

We sincerely apologize for any inconvenience this recall may cause, but please be assured that your safety is our first concern.

Sincerely,  
**American Honda Motor Co., Inc.**