



R24DE

FINAL NOTICE

DATE: April 3, 2025
TO: Blue Bird Owners
Subject: R24DE: 6.8L Gas – Fuel Supply Line Leak

According to our records, we have not received confirmation the above referenced recall, dated October 11, 2024, has been completed. A copy of Recall R24DE is attached. Your buses affected by Recall R24DE are identified by Blue Bird body number and VIN under Section 2 on the enclosed cover sheet.

If this is the first time you received notification of Recall R24DE, please read the enclosed notification carefully. Recall R24DE must be completed, as soon as possible.

Corrective Action:

To correct this condition, the Dealer or the Owner will complete an inspection, and if necessary, complete a repair as outlined in R24DE Recall Instructions. Blue Bird will replace the fuel lines, as necessary. Blue Bird will reimburse the labor cost of the repair related to this recall at no cost to the vehicle owner.

Labor Reimbursement:

Blue Bird will reimburse the labor cost of the Inspection and Repair related to this recall at no cost to the vehicle owner. The standard repair time (SRT) to accomplish these repairs in accordance with the R24DE remedy procedure(s) is outlined below. The remedy would be comprised of Repair A or Repair B based on the inspection findings.

Repair A: Inspection Only	0.30 Hours (18 minutes)
Repair B: Inspection and Repair	0.80 Hours (48 minutes)

Administering the Recall and Parts:

Recall R24DE should be repaired, per R24DE Recall Instructions. You may request parts at campaignparts@blue-bird.com **Parts are currently available.**

Thank you for your prompt attention to this matter.



R24DE

IMPORTANT SAFETY RECALL
NHTSA Number: 24V-599 (School Bus)
NHTSA Number: 24V-600 (Non-School Bus)

DATE: October 11, 2024

SUBJECT: R24DE: 6.8L Gas – Fuel Supply Line Leak

Dear Blue Bird Owner:

This notice is sent to you in accordance with the requirements of the National Traffic and Motor Vehicle Safety Act.

Blue Bird Body Company has decided a defect which relates to motor vehicle safety exists in certain:

- Model year 2018 - 2022 Blue Bird Vision School Buses
 - Manufactured from January 28, 2016 through February 10, 2021
- Model Year 2018 - 2022 Blue Bird Vision Non-School Buses
 - Manufactured from August 11, 2016 through October 28, 2020

On the subject buses, the coating on the end of the fuel line could have been damaged causing the potential for liquid fuel to leach under the fuel line coating which could in turn present a fuel leak. If this condition is present, a risk of fuel contacting the exhaust system is possible which has the potential to cause a fire. Blue Bird is conducting a recall campaign to inspect this fuel line connection for leaks, and if present, remove the bus from service until repairs are completed.

This notice applies to your bus(es) identified by both Blue Bird Body Number and Vehicle Identification Number (VIN) on the enclosed yellow cover sheet. If you no longer own the subject bus(es), please complete the appropriate section of the yellow cover sheet and return to Blue Bird in the enclosed pink postage prepaid envelope.

Corrective Action:

To correct this condition, the Dealer or the Owner will complete an inspection, and if necessary, complete a repair as outlined in R24DE Recall Instructions. Blue Bird will replace the fuel lines, as necessary. Blue Bird will reimburse the labor cost of the repair related to this recall at no cost to the vehicle owner.

Labor Reimbursement:

Blue Bird will reimburse the labor cost of the Inspection and Repair related to this recall at no cost to the vehicle owner. The standard repair time (SRT) to accomplish these repairs in accordance with the R24DE remedy procedure(s) is outlined below. The remedy would be comprised of Repair A or Repair B based on the inspection findings.

Repair A: Inspection Only 0.30 Hours (18 minutes)
Repair B: Inspection and Repair 0.80 Hours (48 minutes)



Administering the Recall and Parts:

Blue Bird recommends you contact your local or nearest Blue Bird Dealer to arrange for this recall to be performed. To locate an authorized dealer, search online at www.blue-bird.com/find-a-dealer. The Dealer can perform the repairs, or arrange for repairs to be performed by a service repair facility authorized by the Dealer. Recall R24DE should be repaired, per R24DE Recall Instructions. **Parts are currently available and can be ordered through campaignparts@blue-bird.com**

Federal law requires that any vehicle lessor receiving this recall notice must forward a copy of this notice to the lessee within ten days.

If the modifications directed by this notification were performed on your bus prior to the receipt of this recall notification, attach a copy of the work order/invoice. Mail the documents in the pink self-addressed postage prepaid envelope included with the pink reply sheet to Blue Bird for warranty consideration. Reimbursements will be made in accordance with the requirements of the National Highway Transportation Safety Act, Title 49 Code of Federal Regulations, Parts 573 and 577.

Please contact your local Blue Bird Dealer with any questions regarding this recall campaign.

If Blue Bird Body Company should fail to or is unable to remedy this condition without charge to you, you may contact:

**ADMINISTRATOR
NATIONAL HIGHWAY TRAFFIC SAFETY ADMINISTRATION
1200 NEW JERSEY AVENUE, SE
WASHINGTON, D.C. 20590**

Or, you may call The National Highway Traffic Safety Administration toll free at:
1-888-327-4236 TTY 1-800-424-9153 or go to: <http://www.safercar.gov>

RECALL

R24DE: 6.8L Gasoline Fuel Line Leak



Model(s) Affected: Certain 2018-2022 model year Vision (BBCV) with 6.8L gasoline engines

Issue: Liquid fuel can leach under fuel line coating and potentially leak.

Cause: Superficial cuts/abrasions to the end of the fuel line from material handling could possibly create leaks paths under the coating.

Solution: Inspect fuel line for signs of coating delamination and/or external leaks. Do not disassemble for inspection. Replace if any damage/leaks are found.

[WARNING] Observe all safety precautions to secure the bus from rolling and for use of ladders or scaffolds. Thoroughly read and understand all instructions before performing these procedures. Park bus on level surface, apply parking brake, turn off ignition key, and chock wheels.

SRT	Time (HR)
Repair A: Inspection Only	0.30 Hours (18 minutes)
Repair B: Inspection and Repair	0.80 Hours (48 minutes)

Related Parts	Part Number	Quantity
TUBE ASSY,FUEL/VPR,ENGINE BNDL,GAS,M10	10046465	1 (as req)
TIE,CABLE,120LB 15.25L	00029999	4 (as req)

RECALL

R24DE: 6.8L Gasoline Fuel Line Leak



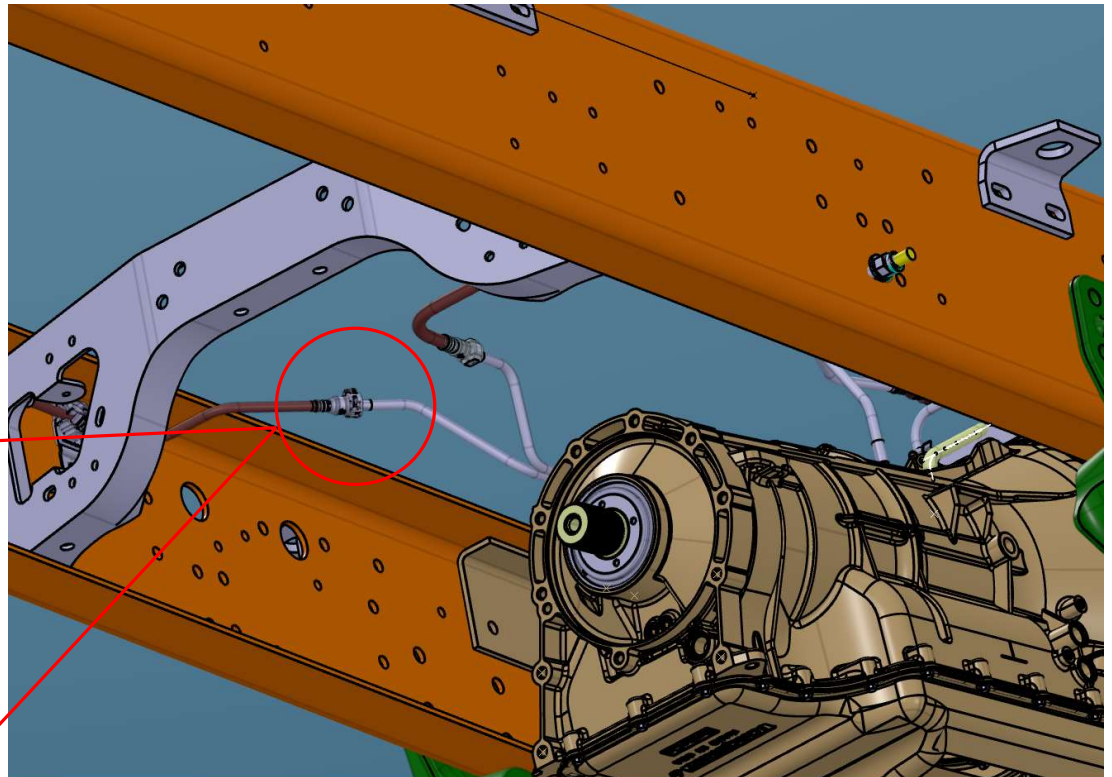
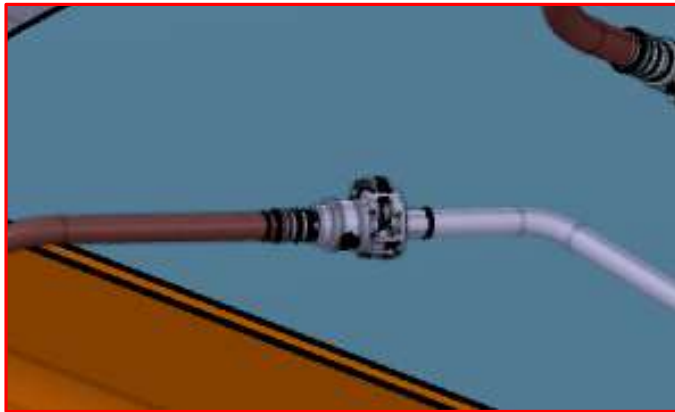
Instructions:

1. Visually inspect fuel line connection circled in red & surrounding areas. Primarily on the male (engine) side of the connector.

NOTE: This inspection is only for the connection circled in red. No other connection points are subject to this campaign.

2. If no signs of fuel and/or moisture, no further action is required.

Return bus to service.



RECALL

R24DE: 6.8L Gasoline Fuel Line Leak



Instructions:

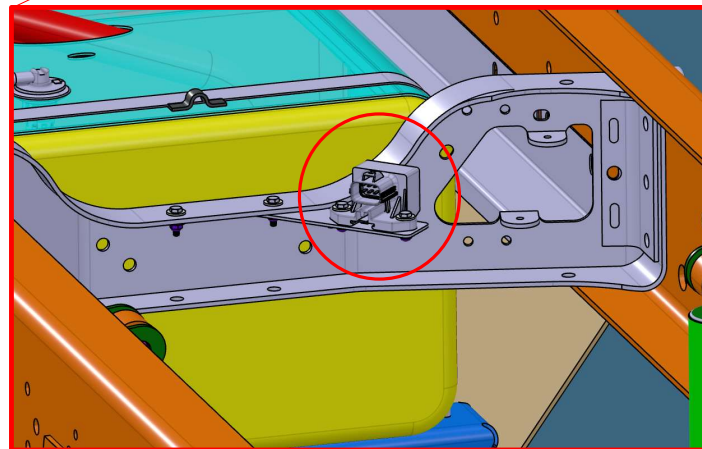
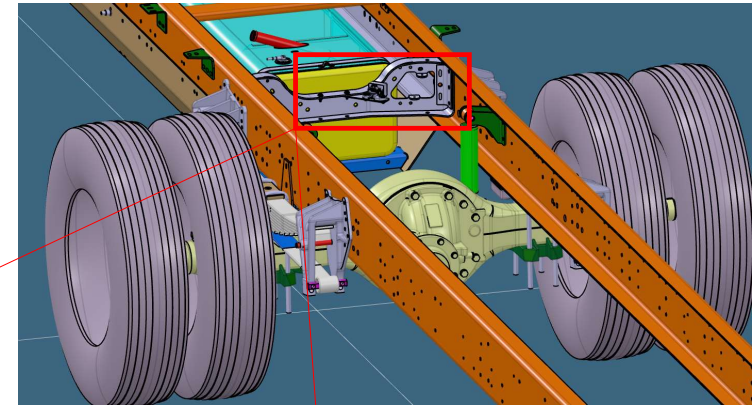
3. If fuel line is leaking at location, or there is visible evidence of leaks, proceed to the following steps to replace fuel line.

Preparatory:

- Chock wheels and secure vehicle
- Ensure fuel level is 15-85%
- Allow engine to cold soak for >60 minutes.
- Disconnect fuel pump driver module over rear axle.
- Start engine and allow to stall. Attempt to start engine again. Leave electrical connection loose until repair is complete.
- Disconnect batteries
- LOTO vehicle

Warning:

Gasoline is a highly flammable liquid and vapor. Gasoline can cause skin irritation, respiratory irritation, and organ damage. Prolonged exposure can cause lung issues and respiratory distress. Gasoline is toxic if swallowed, inhaled, or comes into contact with the skin. It can also be fatal if swallowed and enters the airways. Gasoline is harmful to aquatic life and can have long-lasting effects. Take proper precautions.



RECALL

R24DE: 6.8L Gasoline Fuel Line Leak



Instructions:

4. Place a shop rag over fuel line connection and disconnect.

a) **Note:** Liquid fuel may spill from connections. Be prepared.

5. Cut ty-wraps at aux cross member that secure fuel supply and vapor line manifold.

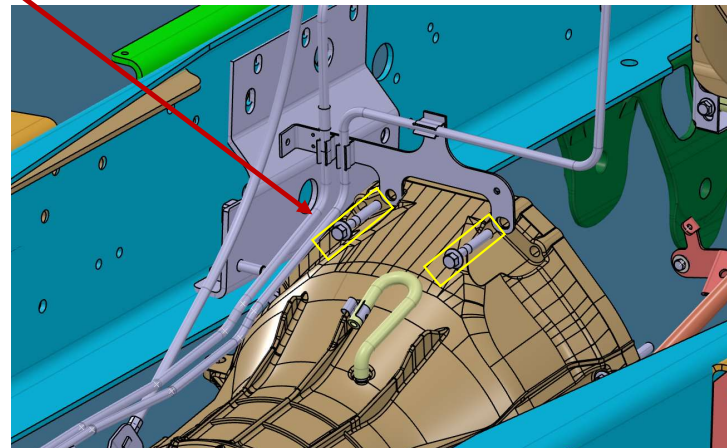
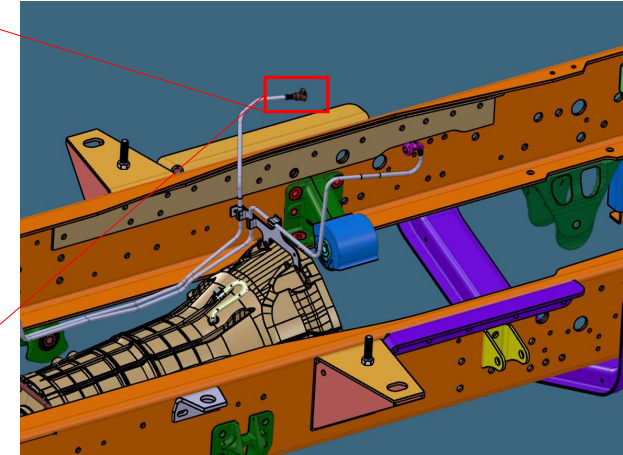
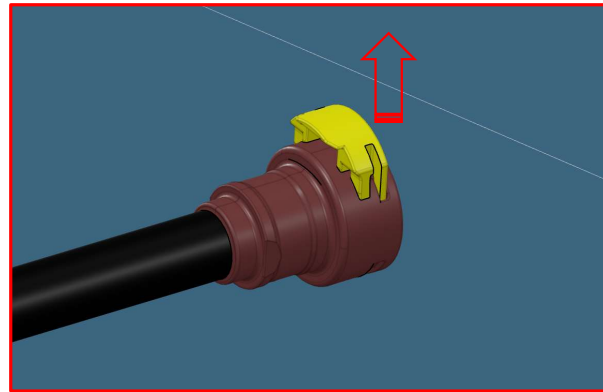
6. Remove and retain the two bellhousing bolts that secure fuel/vapor line manifold.

a) **Note:** These fasteners are re-usable. However, if they are corroded they will need replaced.

7. Remove fuel supply/vapor manifold assy.

8. Install in reverse order.

9. Torque bellhousing bolts to 30-40 Ft-lbs (40-54 NM)



RECALL

R24DE: 6.8L Gasoline Fuel Line Leak



Instructions:

10. With fuel system re-assembled, re-connect FPDM (fuel pump driver module), and 12v battery connections.
11. Perform the following sequence, 3 consecutive times:
 - Turn key on but do not start
 - Pause 3 seconds and shut key off
 - Pause 30 seconds and key on
12. Key off, inspect fuel line and connection points for leaks and correct, as required.
13. Start engine and inspect for leaks
14. Connect IDS and confirm no fault codes
15. Perform EVAP self-test and confirm it passes.
16. Return unit to service.

NOTE:

If PCM faults are present, fuel line continues to leak, or units fails the EVAP test submit a technical support ticket for FSE support.

