

REFERENCE:	Nova Bus Manuals
SECTION:	12: Passenger Seats
RS N°:	MQR 7621-2454
EFFECTIVE IN PROD.:	N/A
TC RECALL N°:	N/A
NHTSA RECALL N°:	24V907

**APPLICATION DEADLINES: N/A CLAIM
REFERENCE NUMBER: SR5674**

SUBJECT:	Wheelchair attachment belt
JUSTIFICATION:	The affected vehicles may have been equipped with a wheelchair securement system to meet ADA requirements. The system is designed to have two attachment points to secure the front of the wheelchair and two to secure the rear. The affected vehicle may have been manufactured with only one attachment at the front of the wheelchair and three at the rear. With the wheelchair attachment belt in an incorrect position, the wheelchair could move more than intended while the vehicle is in motion. A wheelchair moving more than intended can lead to injury for the passenger.

LEVEL	DESCRIPTION	DIRECT CHARGES		TIME
		LABOUR	MATERIAL	
1	Remove the front curbside 3 passenger flip-up seat and modify the seat according to American Seating procedures to reposition the wheelchair attachment belt.	Nova Bus	American Seating	0.75h
2	-	-	-	-

CONTACT YOUR CSM TO OBTAIN MORE INFORMATION ON THE REQUIRED PARTS SUPPLIED DIRECTLY TO YOUR FACILITY BY AMERICAN SEATING.

MATERIAL REQUIRED PER VEHICLE

QTY	PART N°	REV.	DESCRIPTION
LEVEL 1			
-	-	-	-
LEVEL 2			
-	-	-	-

DISPOSAL OF PARTS

REMOVED PARTS ARE:	DISCARDED	RETAINED
	-	-

REVISION HISTORY

REV.	DATE	CHANGE DESCRIPTION	WRITTEN BY
NR	2025JA27	Initial release	Luc Carignan

APPROVED BY: **Danna Dupuis**

Digitally signed by Danna Dupuis
Date: 2025.01.27 16:37:12 -05'00'

CLIENT	ORDER	ROAD NUMBER		VIN (2NVY/4RKY...)		QTY
		FROM	TO	FROM	TO	
Puerto Rico Metropolitan Bus Authority - AMA	LE83	2022-01	2022-11			11
Puerto Rico Metropolitan Bus Authority - AMA	LF41	2022-12	2022-12			1
Puerto Rico Metropolitan Bus Authority - AMA	LF74	2024-01	2024-12			12

**WARNING**

FOLLOW YOUR INTERNAL SAFETY PROCEDURES.

PROCEDURE

- 1.1. Park the vehicle on an even surface with the transmission on neutral.
- 1.2. Apply the parking brake and set the master control switch to the **stop** position.
- 1.3. Remove the front curbside 3 passenger flip-up seat. Retain hardware. See Figure 1.



Figure 1 - Curbside 3 passengers flip-up seat to remove

**NOTE**

The following procedure is provided by American Seating. Nova Bus cannot be held responsible for its content.

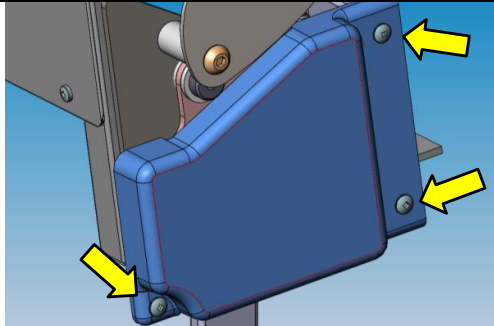


CHANGE LEGS ON FLIP-UP SEAT

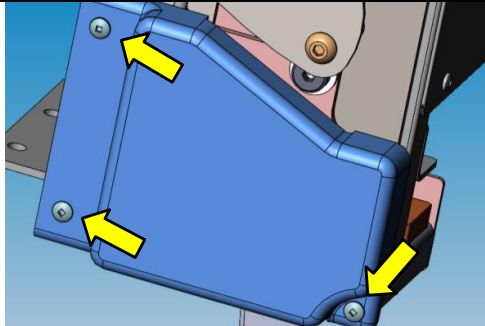
FMI – INSIGHT 0041

PROCESS DESCRIPTION	REVISION	ISSUE DATE	M.E./AUTHOR	APPROVER
CHANGE LEG	B	2/19/24	D. ESTALIS	

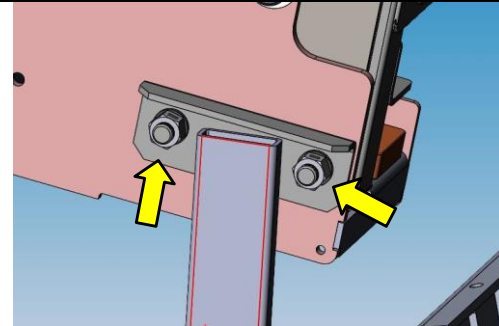
STEP 1	STEP 2	STEP 3
REMOVE THREE SCREWS (088894003) SECURING THE END COVER TO THE FRAME. DISCARD THE SCREWS, RETAIN THE END COVER FOR REASSEMBLY.	REMOVE THREE SCREWS (088894003) SECURING THE OPPOSITE END COVER TO THE FRAME. DISCARD THE SCREWS, RETAIN THE END COVER FOR REASSEMBLY.	REMOVE TWO NUTS (0060806ZN) SECURING THE LEG TO THE FRAME. DISCARD THE NUTS.



USE A #2 SQUARE BIT

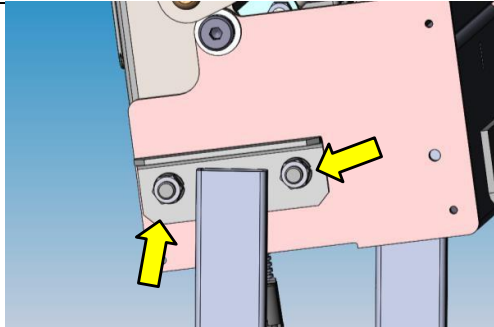


USE A #2 SQUARE BIT

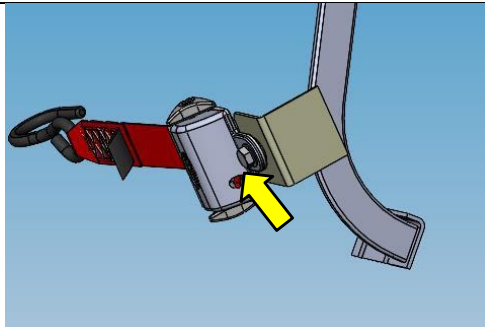


USE A 9/16" SOCKET OR COMBINATION WRENCH

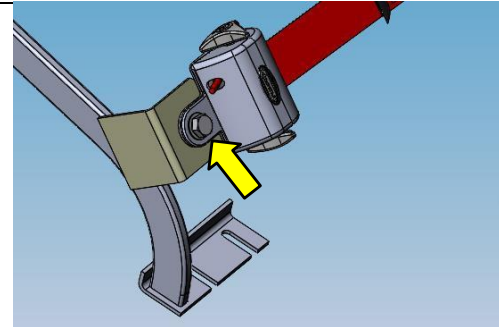
STEP 4	STEP 5	STEP 6
REMOVE TWO NUTS (0060806ZN) FROM THE OPPOSITE SIDE OF THE SEAT, SECURING THE LEG TO THE FRAME. DISCARD THE NUTS.	REMOVE THE SEAT BELT (150711001) FROM THE INCORRECT LEG. DISCARD THE HARDWARE.	INSTALL THE SEAT BELT (150711001) ON THE NEW LEG (210166MD07R57). **SEE STEP 7 FOR THE HARDWARE STACK UP**



USE A 9/16" SOCKET OR COMBINATION WRENCH



USE A 3/4" SOCKET AND COMBINATION WRENCH



USE A 3/4" SOCKET AND COMBINATION WRENCH



CHECK

Revision 9/4/14



DOUBLE CHECK



CYCLE TEST



TORQUE CHECK



GAUGE CHECK



SAFETY ALERT

FM 09.92



FOCUS ARROW

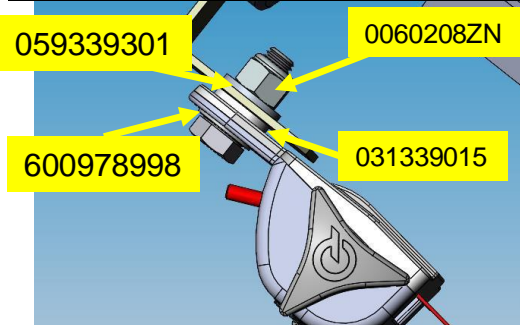


CHANGE LEGS ON FLIP-UP SEAT

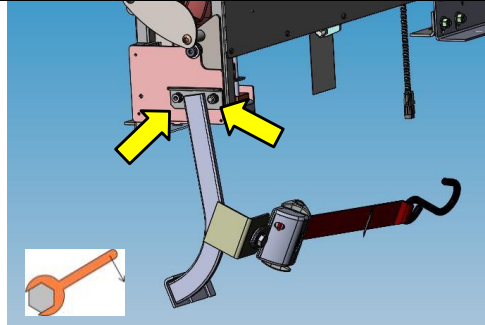
FMI – INSIGHT 0041

PROCESS DESCRIPTION	REVISION	ISSUE DATE	M.E./AUTHOR	APPROVER
CHANGE LEG	B	2/19/24	D. ESTALIS	

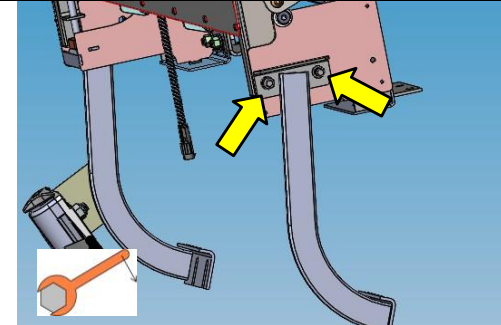
STEP 7	STEP 8	STEP 9
HARDWARE STACK UP FOR SEAT BELT	INSTALL LEG (210166MD07R57) ON THE FRAME, USING TWO NUTS (0060806ZN).	INSTALL LEG (210166MD06L57) ON THE OPPOSITE SIDE OF THE FRAME, USING TWO NUTS (0060806ZN).



THE BELT SHOULD BE TIGHTEN TO RIGID, THEN BACKED OFF A ¼ TO A ½ TURN.

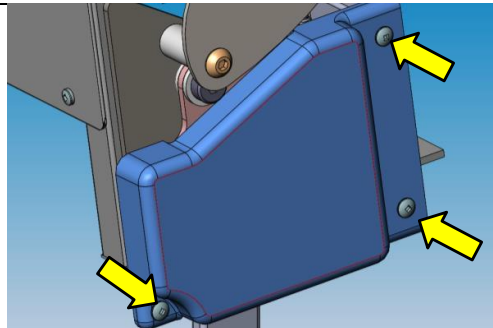


USE A 9/16" SOCKET TORQUE TO 180 - 200 IN-LBS.

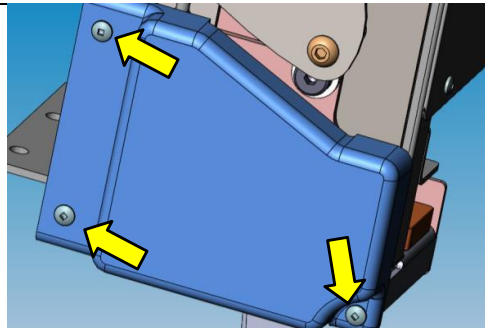


USE A 9/16" SOCKET TORQUE TO 180 - 200 IN-LBS.

STEP 10	STEP 11
INSTALL THE END COVER ON THE FRAME, USING THREE SCREWS (088894003).	INSTALL THE OTHER END COVER ON THE OPPOSITE END OF THE FRAME, USING THREE SCREWS (088894003).



USE A #2 SQUARE BIT DRIVE THE SCREW UNTIL FULLY SEATED



USE A #2 SQUARE BIT DRIVE THE SCREW UNTIL FULLY SEATED



CHECK



DOUBLE CHECK



CYCLE TEST



TORQUE CHECK



GAUGE CHECK



SAFETY ALERT



FOCUS ARROW

Revision 9/4/14

FM 09.92



CHANGE LEGS ON THE FLIP-U SEAT

FMI – INSIGHT 0041

PROCESS DESCRIPTION	REVISION	ISSUE DATE	M.E./AUTHOR	APPROVER
CHANGE LEGS	B	2/19/24	D. ESTALIS	

TOOLS REQUIRED

- #2 SQUARE BIT
- 9/16" SOCKET OR COMBINATION WRENCH
 - 3/4" SOCKET
- 3/4" COMBINATION WRENCH



CHECK

Revision 9/4/14



DOUBLE CHECK



CYCLE TEST



TORQUE CHECK



GUAGE CHECK



SAFETY ALERT



FOCUS ARROW

FM 09.92

- 1.4. Install the retained 3 passengers flip-up seat using the retained hardware. See Figure 2 for the required torque value.

**NOTE**

For information on the passenger seat installation, see section 12: *Passenger Seats* in the Nova Bus maintenance manual. Use appropriate equipment for your protection and to prevent damage to the seats.

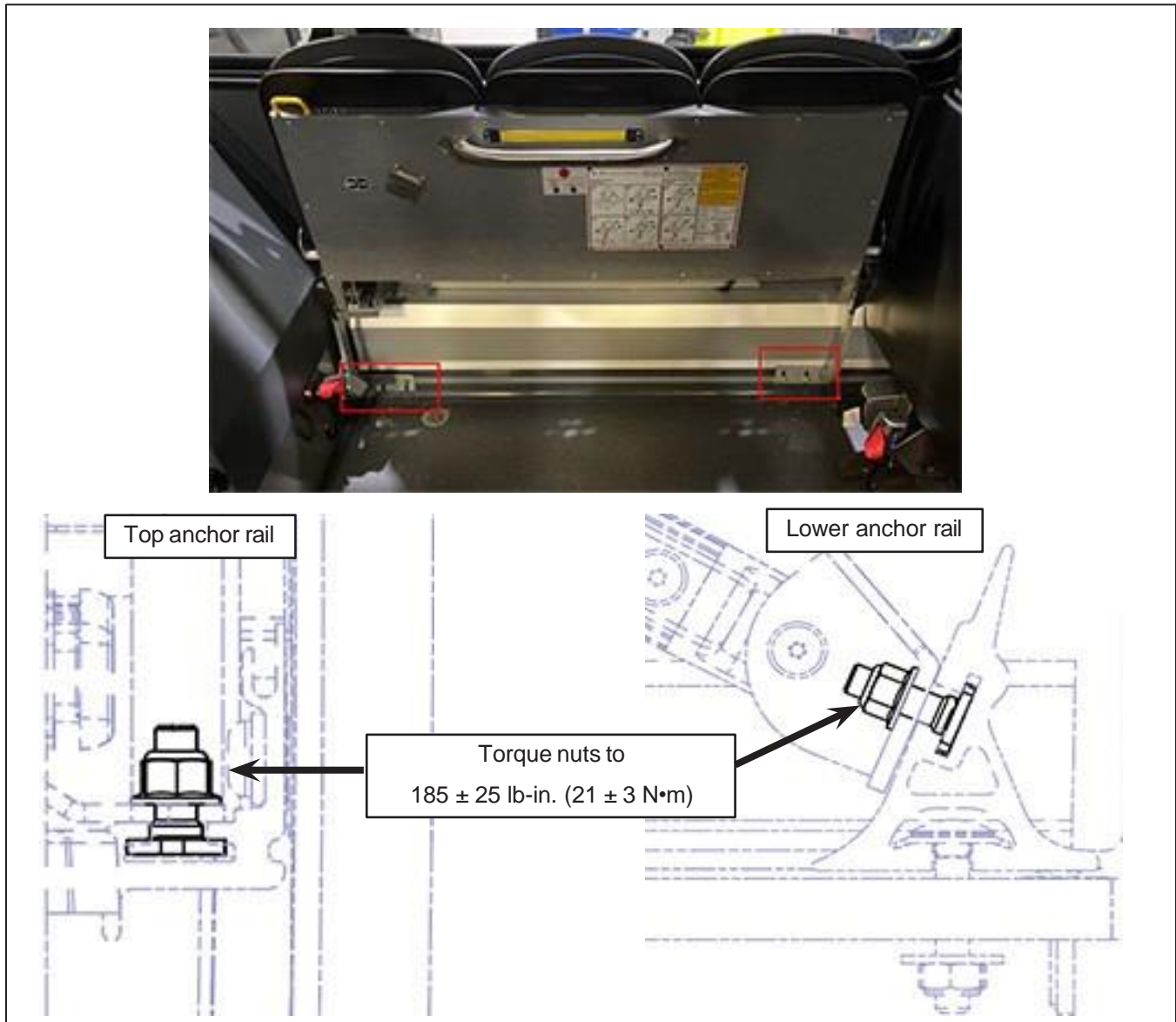


Figure 2 - 3 Passenger Flip-Up Seat Anchor Point Torque Value

- 1.5. Return the vehicle in service.

