



## After-Sales Technical Bulletin

San Cesario sul Panaro, Modena, November 28th, 2024

**TO:** Pagani Authorized Dealers Sales Team, Pagani Authorized Dealers After- Sales Team

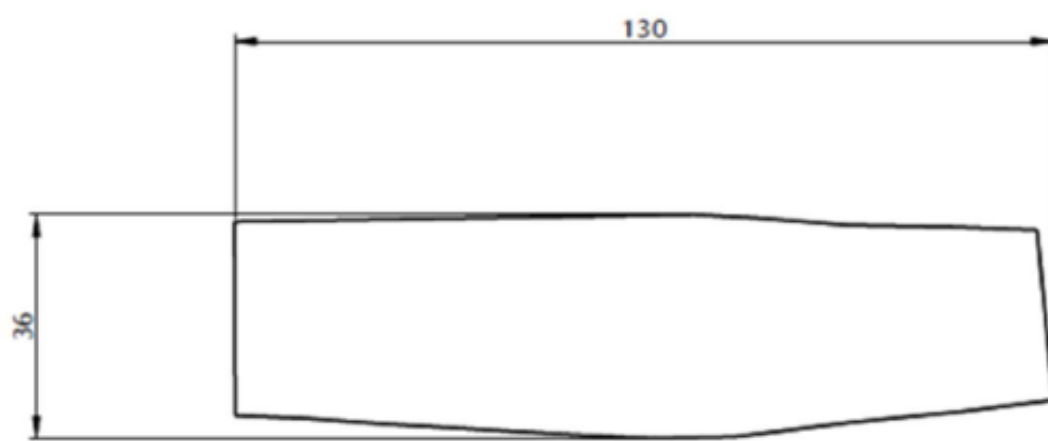
**Subject:** Utopia Coupé Passenger Dashboard Panel Kevlar Layers Kit.

**Description:** Please follow this procedure to install the passenger dashboard panel Kevlar layers in cars interested by this campaign. The Kevlar layers avoid potential risks of damaging the passenger airbag in case of deployment.

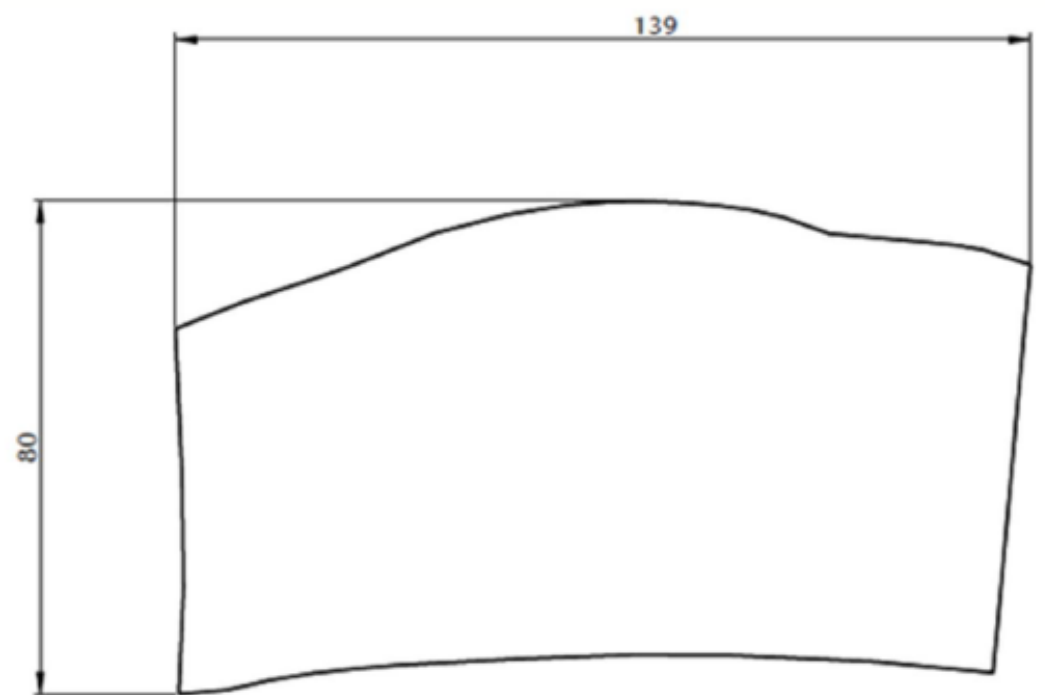
**CLAIMABLE HOURS: 4 h**

### NEEDED MATERIAL

P/N	Part	Q.ty
024723	Passenger Dashboard Panel Vert Layer LHD V4	1



*Left Hand Side*



*Right Hand Side*

**NOTE:** the kit 024723 is composed of **both** the two elements shown above.

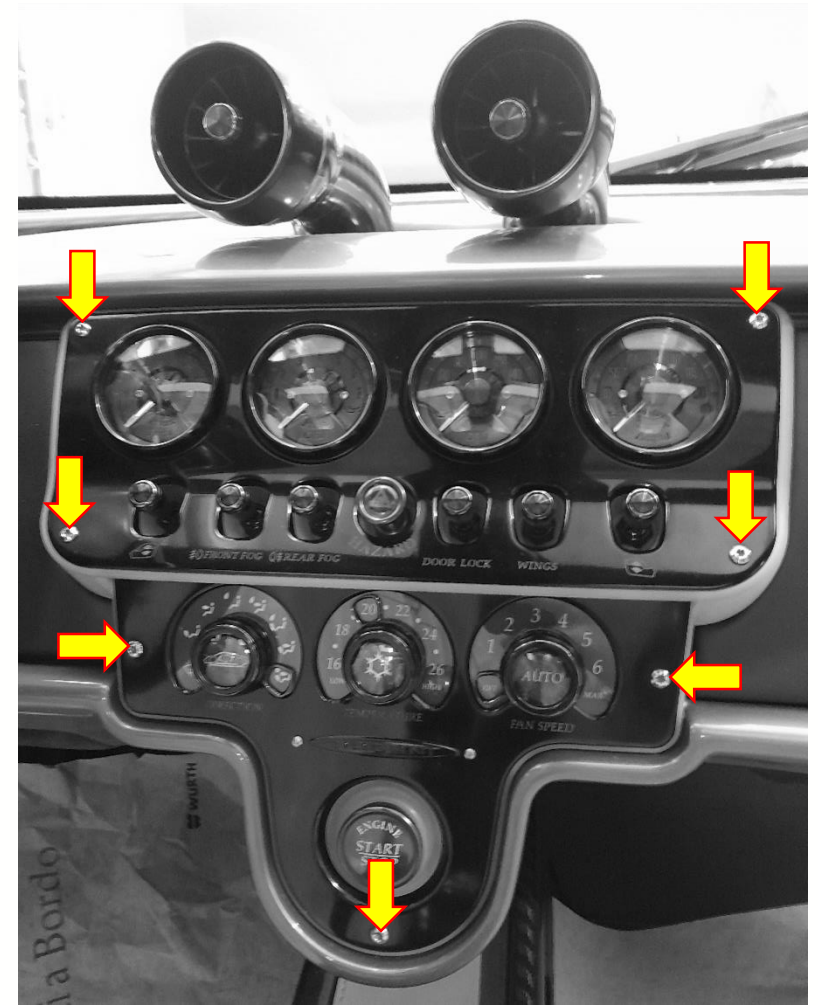
**NOTE:** indications "left hand side" and "right hand side" are referring to the passenger dashboard panel sides as you look at it while seating in the cabin. Dimensions in the pictures above are expressed in millimeters.



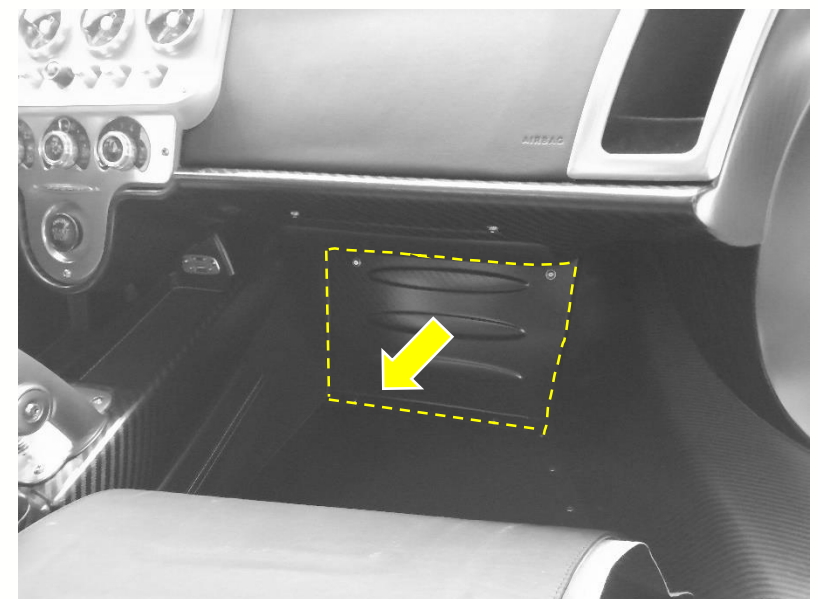
## PRELIMINARY OPERATIONS:

1. Release the central console unscrewing the screws indicated in the picture on the right.

**NOTE:** lean the central console aside, protecting it properly while carrying out the procedure.



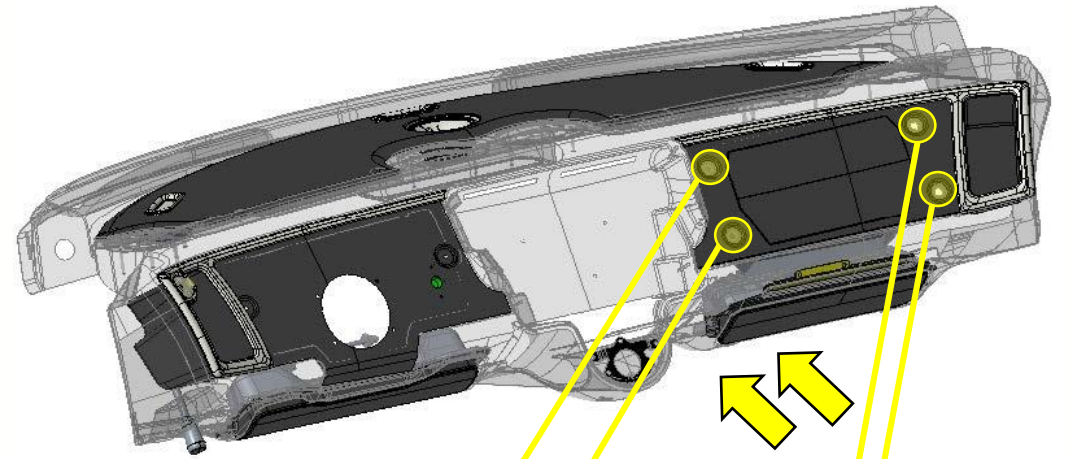
2. Remove the leather panel in the passenger's feet area in order to access the footboard shown in picture. Then, unscrew screws on the footboard and remove it (this will allow you to have more room while carrying out the next steps of the procedure).





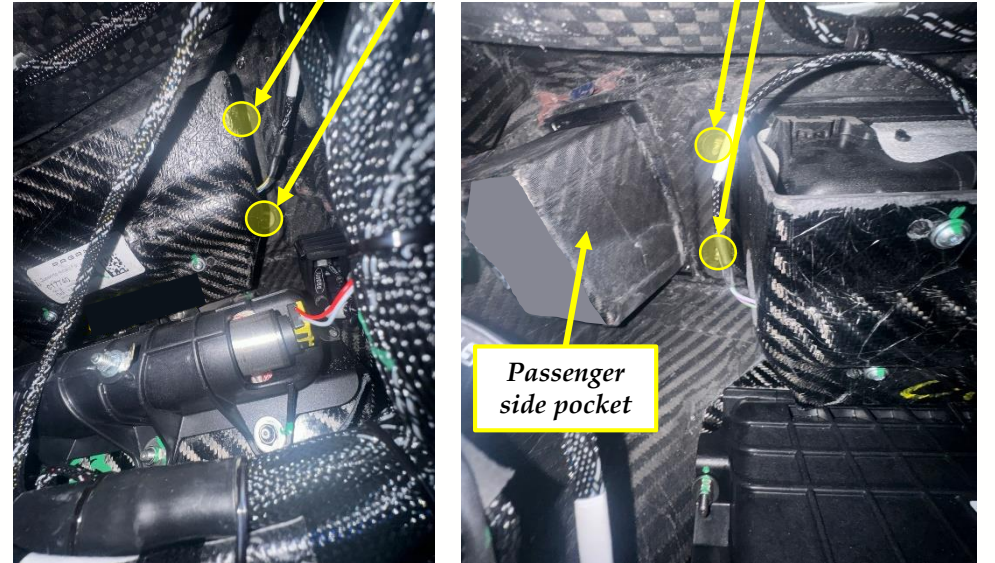
## PROCEDURE

1. Access the compartment behind the passenger dashboard panel from the passenger's feet area.



2. Locate the four M5 nuts that are holding the dashboard panel in its position and undo them.

**NOTE:** pictures on the right are taken from the compartment behind the passenger's dashboard panel.



3. Remove the passenger dashboard panel.



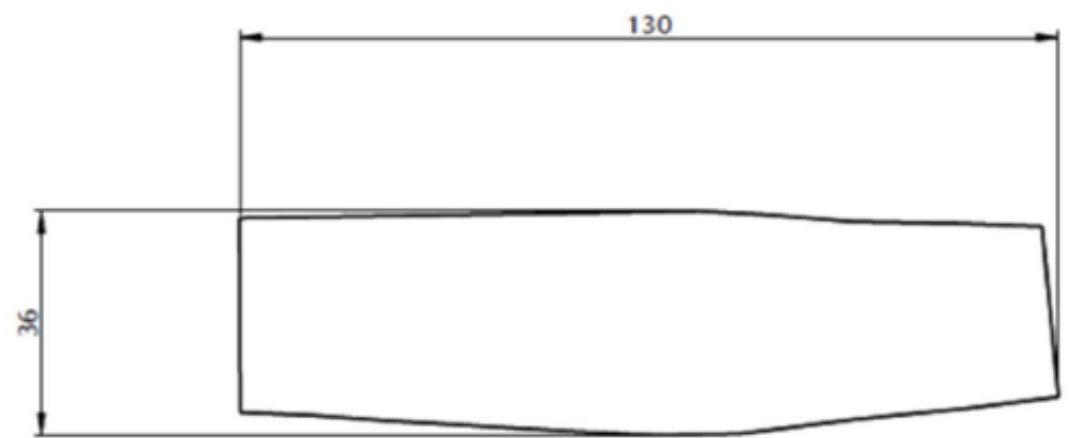
4. Clean and degrease edges and surfaces of the passenger airbag compartment in the internal side of the passenger dashboard panel, as they will be interested by next steps.

5. The kit 024723 is composed of **both** the two Kevlar layers shown on the right.

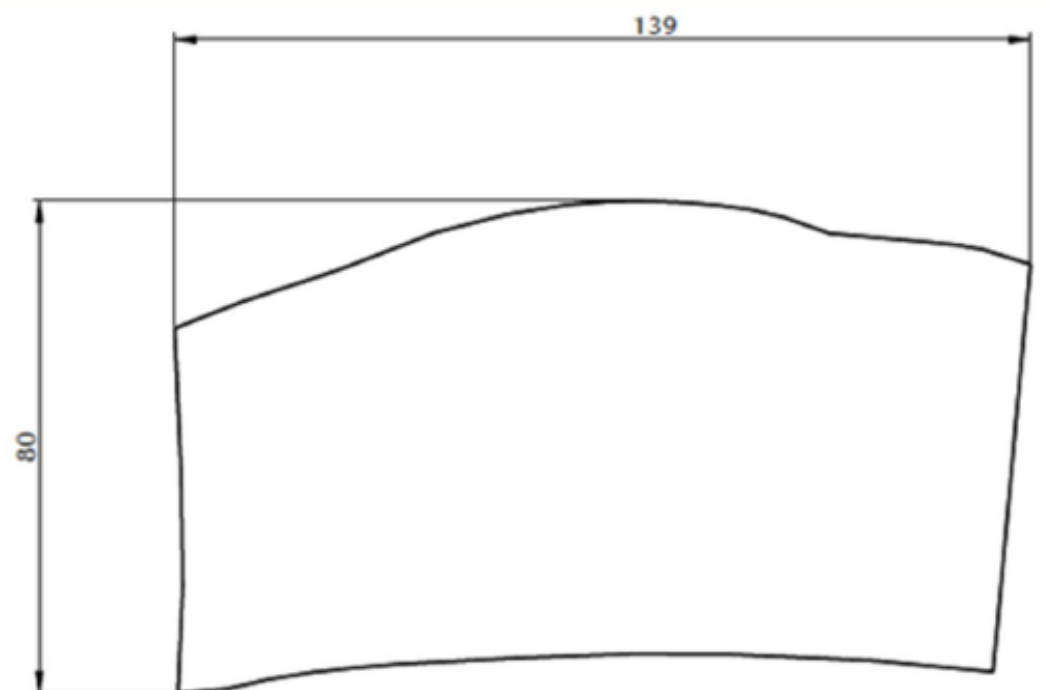
**NOTE:** indications "left hand side" and "right hand side" are referring to the passenger dashboard panel sides as you look at it while seating in the cabin. Dimensions in the pictures on the right are expressed in millimeters.

**IMPORTANT:** please take some pictures during the installation of Kevlar strips and at the end of the job, then upload them as Job attachments on Salesforce for documentation.

*Left Hand side*



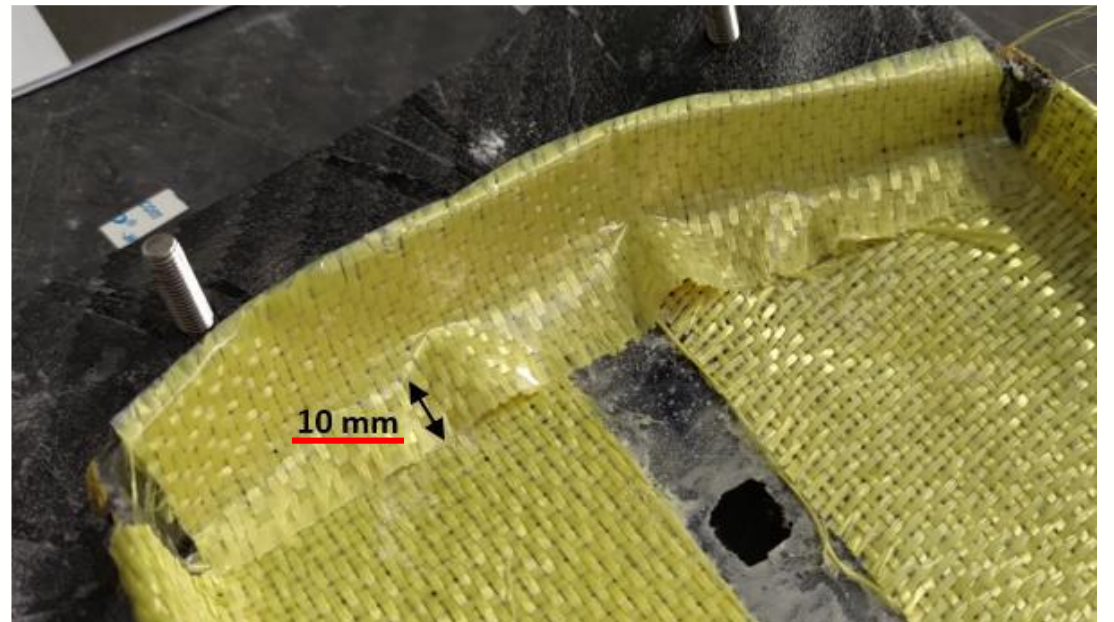
*Right Hand side*



6. The two Kevlar layers are provided with double-sided adhesive tape on one side, corresponding to the height of the lateral surfaces of the passenger dashboard panel airbag compartment (where layers have to be installed).



7. Use the double-sided adhesive tape to apply the two Kevlar layers 024723 on the dashboard panel airbag compartment as shown in the picture on the right. Leave a small upper edge and fold it towards the external side of the passenger airbag compartment as shown in picture.

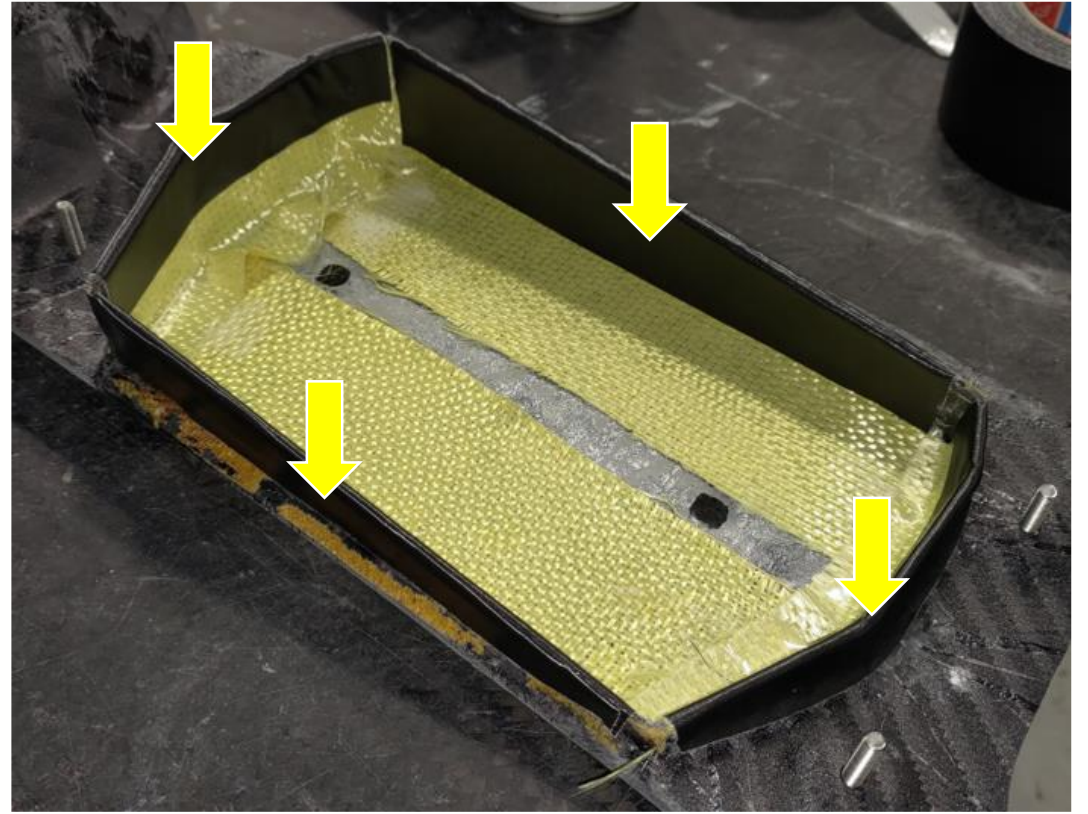


**NOTE:** the picture is showing the internal side of the passenger dashboard panel airbag compartment.

8. In order to be correctly installed, the lower end of the Kevlar layer (the one highlighted with red arrows, laying over the passenger's airbag opening plane) must be free, not glued, and it must extend over **10 mm** on the passenger's airbag opening plane, as shown in the pictures on the right.



9. Apply a layer of Tesa black duct tape (or equivalent) as shown in the picture on the right. The layer of black tape must cover completely all the lateral surfaces, both on the internal and on the external side, as shown in picture.



10. Before refitting the dashboard panel, apply the provided sticker on the inner side of the passenger pocket, in the position shown in the picture on the right, marking that the fix has been carried out.



11. Refit the passenger dashboard panel as explained at steps 1-3. Secure it in position tightening nuts with 7 Nm tightening torque.

12. At the end, refit the passenger's footboard and its leather panel.

13. Refit the central console.