



# WORK INSTRUCTIONS

## MODEL Z FIFTH WHEEL

### PIN BOX FASTENER TORQUE

<b>RECALL #</b>	NHTSA Recall 24V-885, BRV 900006		
<b>PRODUCT:</b>	Model Z Fifth Wheel		
<b>DATE:</b>	November 26, 2024	<b>LABOR RATE:</b>	0.3 hours

**Applies to:**

This document refers to Helux Pin Box Torque on Brinkley Model Z Fifth Wheels manufactured between VINS: [REDACTED]

**Condition:**

Brinkley RV has determined that the fasteners used to assemble the Helux Pin Box may not have been properly torqued. The following instructions provide direction to properly torque the fasteners on the CURT Helux Pin Box. Brinkley RV, at no charge to the customer, will pay for the fasteners to be properly torqued. (NOTE: The VIN is required prior to processing Pre-Authorization).

**Safety:**

Service, repair and installation instructions are written specifically for the use of professionally trained technicians, using proper tools in a shop environment. For safety, and to ensure the best results, only professionally trained technicians should perform the work described in this document.

Safety is, and should always be observed when performing any type of repair. ANSI (American National Standards Institute) has created a standardized labeling system for different levels of safety and danger. The labels below provide information regarding those levels of danger, and should be observed and adhered to at all times.

**⚠ WARNING**

The "WARNING" symbol above is a sign that a procedure has a safety risk involved and may cause death, serious personal injury, severe product and/or property damage if not performed safely and within the parameters set forth in this document.

# CURT HELUX PIN BOX TORQUE VALIDATION

Recall Number:	24E-098		
Product:	Curt Helux Pinbox	Chassis Number:	
Date:	11-26-2024	Flat Rate:	0.3 hr.

## Purpose

Certain vehicles featuring a Helux 5th wheel Pin Box have fasteners that may not have been torqued correctly. These vehicles are identified by the Original Equipment Manufacturer's specific VIN numbers. This document details the process to torque each fastener to the proper specification.

## Safety

This document provides general instructions. Many variables can change the circumstances of any procedure, i.e. the degree of difficulty involved in the service operation and the ability level of the individual performing the operation. This document cannot begin to plot out procedures for every possibility, but will provide the general instructions for effectively installing, removing or servicing the system. In the event the skill level required is too advanced or the procedure too difficult, a certified technician should be consulted before performing the necessary operation. Failure to correctly install, remove or service the system may result in voiding the warranty, inflicting injury or even death.

## Resources Required

- Torque wrench
- Socket -  $\frac{13}{16}$ " - Shock Bolt Head
- Socket -  $\frac{3}{4}$ " -Pivot & Stop Bolts
- Socket -  $\frac{7}{8}$ " - Shock Bolt Nut

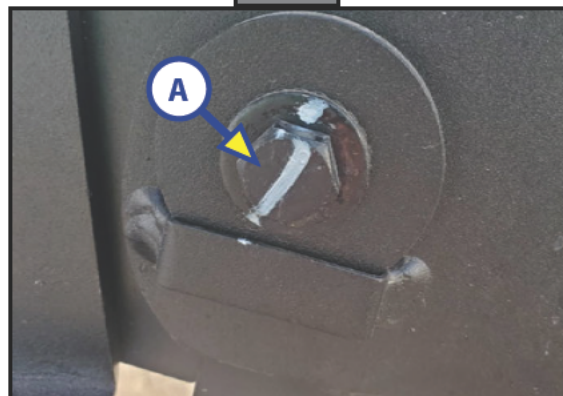
## Preparation

Prior to checking for the amount of torque on the Pivot, Shock, and Stop Bolts, the 5th wheel trailer should be on jack stands or it's leveling system and not connected to a tow vehicle. Any extra weight on the pin box may provide inaccurate torque values.

## Instructions

1. Tighten the Curbside Pivot Bolt (Fig. 1A) to 120 ft-lb.
2. Repeat for the Roadside Pivot Bolt (not shown).

Fig. 1



# CURT HELUX PIN BOX TORQUE VALIDATION

Recall Number:	UVW-XYZ		
Product:	Curt Helux Pinbox	Chassis Number:	
Date:	11-18-2024	Flat Rate:	0.3 hr.

3. Tighten the Top Shock Bolt (Fig. 2A) to 65 ft-lb.

**NOTE:** Secure the nut side with a back-up wrench in the event the bolt turns while setting torque.

4. Repeat for the Bottom Shock Bolt (Figs. 3A).

Fig. 2

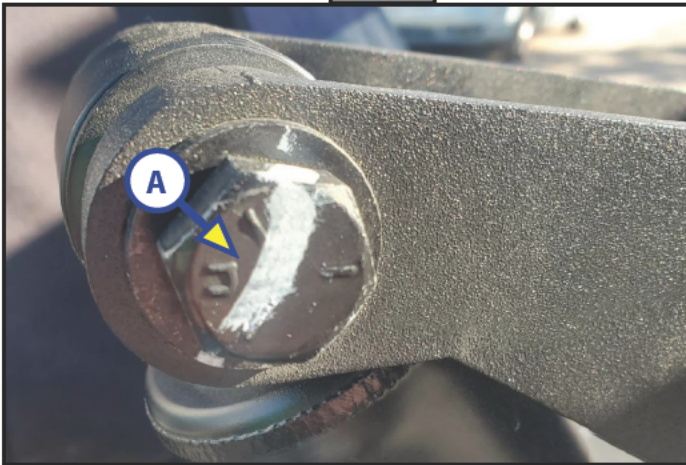


Fig. 3



**NOTE:** Stop Bolt locations are found on the underside of the pin box (Figs. 4A & B)

5. Tighten the Roadside Stop Bolt (Fig. 5A) to 75 ft-lb.

6. Repeat for the Curbside Stop Bolt.

Fig. 4

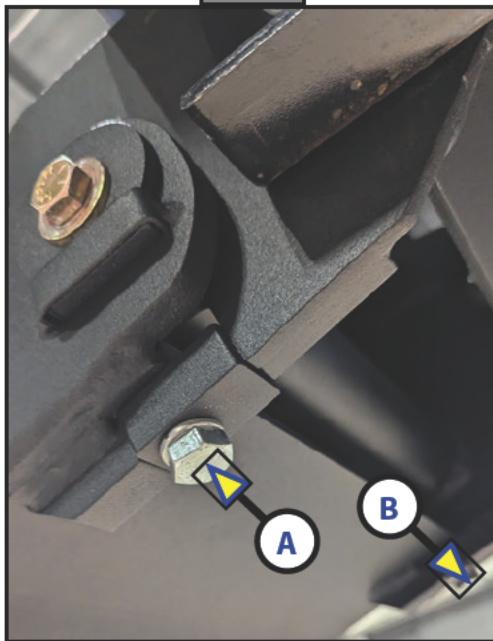


Fig. 5

