



# Service Bulletin

American Honda Motor Co., Inc.

CRF1100L/LD/L4/L4D #3  
November 2024

## SAFETY RECALL

### 2022, 2024, 2025 CRF1100L/LD/L4/L4D Africa TWIN PGM-FI Unit Update

#### BACKGROUND

American Honda is launching a **SAFETY RECALL** on **CERTAIN** 2022, 2024, 2025 model year CRF1100L/LD/L4/L4D Africa Twin motorcycles **to update** the fuel injection electronic control (PGM-FI) unit software. Due to improper software programming in the PGM-FI unit, the traction control settings may be miscalculated when the Wheelie Control feature is enabled during certain riding conditions. If the traction control settings are miscalculated while the vehicle is in use, the engine may hesitate or accelerate improperly, increasing the risk of a crash or injury.

**This Safety Recall replaces the Product Update Campaign #2 originally issued in December 2023 for CERTAIN 2022 CRF1100L/LD/L4/L4D motorcycles.** Any affected unit that had the Product Update Campaign #2 repair performed must also receive the PGM-FI unit update as described in this Safety Recall. If Product Update Campaign #2 **has not** been performed, the #2 update is no longer necessary and you can proceed to updating the PGM-FI unit as described in this service bulletin.

#### AFFECTED UNITS

As of November 15, 2024, **YOU MUST NOT SELL CERTAIN NEW or USED** 2022, 2024, 2025 model year CRF1100L/LD/L4/L4D motorcycles until they are repaired according to this Service Bulletin.

- To search for applicable recalls on a specific unit, you **MUST** use *Unit Information* on **iN**.
- To manage your affected new inventory, use your dealer *eResponsibility Report* on **iN**.

#### CUSTOMER NOTIFICATION

American Honda intends to mail customer letters to all owners of affected 2022, 2024, 2025 model year CRF1100L/LD/L4/L4D Africa Twin motorcycles in January 2025. Customers will be informed that their motorcycle may be affected by a safety related defect and will be advised to make an appointment with an authorized Honda dealer for repair.

#### PARTS INFORMATION

The ECU update software is available on **iN** by following this path:

**iN > Service > TechLine > TechLine > Diagnostic Tools > MCS > ECM Software Updates**

#### REQUIRED SPECIAL TOOLS AND EQUIPMENT

The following special tools and equipment are required to perform this update.

LAPTOP (MCS)	With latest version of MCS software installed
MCI (TOOL)	With latest software version installed

#### DEALER REPAIR RESPONSIBILITY

- Repairs must be performed by a qualified technician.
- Performing this repair exactly as shown in Repair Procedure instructions is critical for the remedy to be effective. Carefully follow all instructions.
- Service Management should inspect and confirm the repair.
- Dealer submission of a warranty claim affirms this repair was properly performed.

**WARRANTY CLAIM INFORMATION**

After completing this *Service Bulletin* update, submit one warranty claim per unit with one of the following template number.

Year	Model	Template	Flat Rate
2022	CRF1100L CRF1100LD CRF1100L4 CRF1100L4D	KR1A	0.4 hr
2024 2025	CRF1100L CRF1100LD CRF1100L4 CRF1100L4D	KR1B	

**DEALER SUPPORT**

**TECHNICAL QUESTIONS**

If you have any technical questions relating to this update procedure, please contact: Motorcycle TechLine Online:

***iN > Service > TechLine > TechLine Connect***  
Or call (800) 421-1900, option 9

**WARRANTY QUESTIONS**

If you have any warranty administration questions relating to warranty claim templates, and claim filing procedures, please contact: Motorcycle Warranty Online:

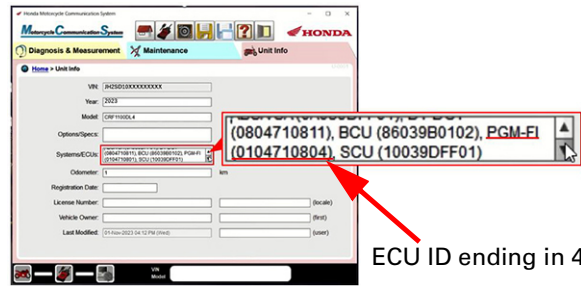
***iN > Service > Warranty & HondaCare > Warranty Connect Filing***  
Or call (800) 421-1900, option 7

**RECALL REPAIR IDENTIFICATION**

Before you begin the repair procedure, verify that the unit has not already been repaired by searching *Unit Information* on ***iN***.

The ECU ID can be verified to ensure an affected unit has been repaired by connecting an MCS and reviewing the Systems/ECUs section of the Unit Info tab.

The ECU ID should end in a 4 after the ECU has been rewritten according to this service bulletin.



**REPAIR PROCEDURE**

**Notes:**

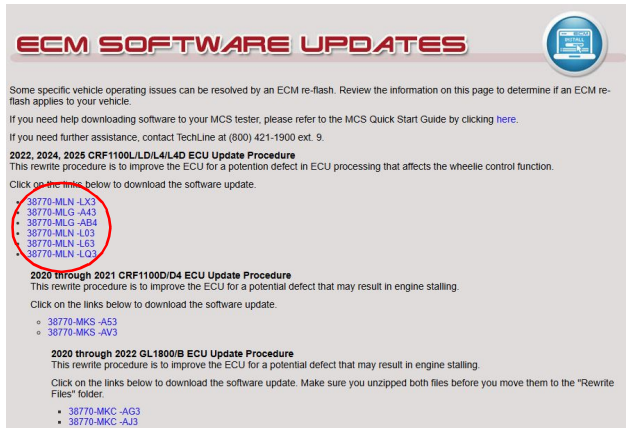
- The ECU update procedure will take approximately four minutes. Failure to follow this procedure may result in the ECU being permanently damaged and will not be covered by AHM warranty.
- Prior to the update procedure, ensure your laptop screen saver, hibernate, or sleep modes are disabled. Be sure to monitor progress to ensure ECU update procedure is not interrupted.
- Use Windows 8, 10, or 11.
- Ensure the laptop used for the ECU update procedure is fully charged or connected to a power source.
- Before beginning the ECU update procedure, ensure the vehicle battery is fully charged (12.8 V minimum).
- Before starting the ECU update procedure, check that all connections are fully set.

### CONFIRM MCS SOFTWARE VERSION

Verify that the Motorcycle Communication System (MCS) program on your computer has the latest software version (V2.047 or higher).  
 If an update is needed, download the latest MCS software on *iN* by following the path:  
***iN* > Service > TechLine > TechLine > Diagnostic Tools > MCS > MCS Software Download**

### Download Updated Software

1. Navigate to the ECM Software Updates page on *iN* by following this path:  
***iN* > Service > TechLine > TechLine > Diagnostic Tools > MCS > ECM Software Updates**
2. Click the link **2022, 2024, 2025 CRF1100L/LD/L4/L4D ECU Update Procedure** to download the software.



3. Copy all six files (.rwg) from the folder shown. Paste the files to the MCS directory in the laptop's hard drive (C:).  
 MCS will choose the correct rewrite file based on the affected unit's VIN that you are programming.

**Note:** Do not change the file names. Only save the rewrite files.

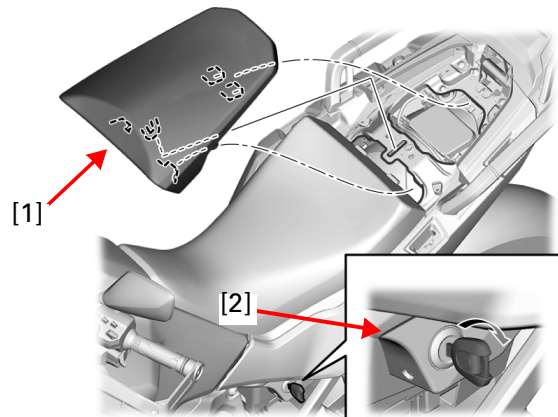
### C:Motorcycle Communication SystemRewrite Files

Name	Date modified	Type	Size
38770-MLG -A43_-M1.rwg	11/18/2024 12:32 PM	RWG File	2,057 KB
38770-MLG -AB4_-M1.rwg	11/18/2024 12:32 PM	RWG File	2,057 KB
38770-MLN -L03_-M1.rwg	11/18/2024 12:32 PM	RWG File	2,057 KB
38770-MLN -L63_-M1.rwg	11/18/2024 12:32 PM	RWG File	2,057 KB
38770-MLN -LQ3_-M1.rwg	11/18/2024 12:32 PM	RWG File	2,057 KB
38770-MLN -LX3_-M1.rwg	11/18/2024 12:32 PM	RWG File	2,057 KB

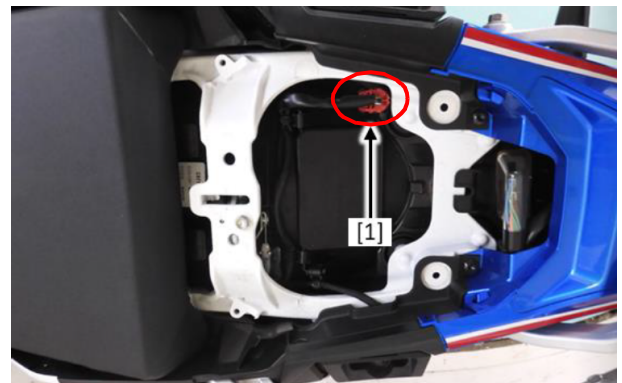
### CONNECTING THE MCI

Use the following steps to connect the Motorcycle Communications Interface (MCI) to the computer and motorcycle.

1. Connect the MCI to the computer using the USB cable.
2. Locate the DLC connector by unlocking the pillion seat [1] using the key [2]. Remove the pillion seat.
  - Refer to the service manual for instructions.



3. Remove the dummy connector from the DLC connector [1], and then connect the MCI to the DLC connector.



**ECU UPDATE PROCEDURE**

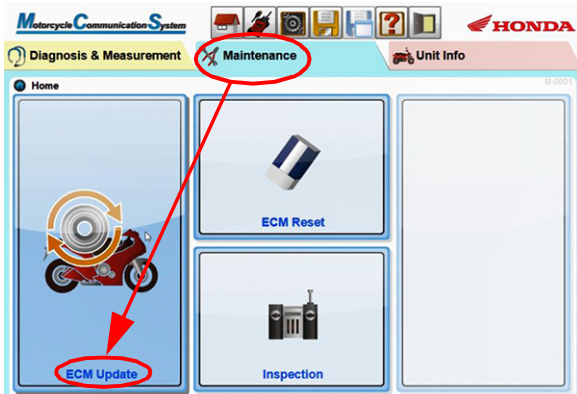
**Note:** To avoid possible damage to the ECU, ensure the battery is fully charged and battery cables remain secure. Do not loosen or disconnect during update.

1. Start the MCS program. Key "On" the ignition. Enter the VIN, mileage, model and year, then click "OK".

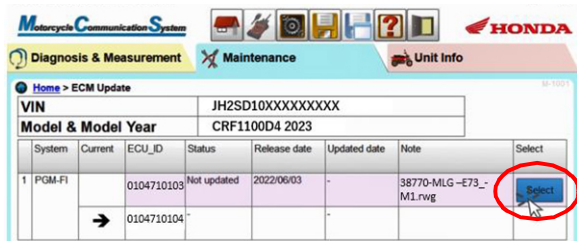
**Notes:**

- If there are stored DTCs, clear them using MCS before performing the update.
- The correct model year may not be available to select from the MCS drop down menu. This DOES NOT affect the update. If this happens, ignore the issue and proceed with the update. The system will automatically select the correct update file.

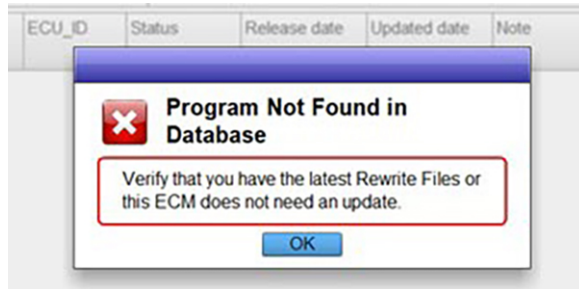
2. Select the Maintenance tab then ECM Update.



3. Select the PGM-FI file from the table as shown, click the Select button next to the software revision file.

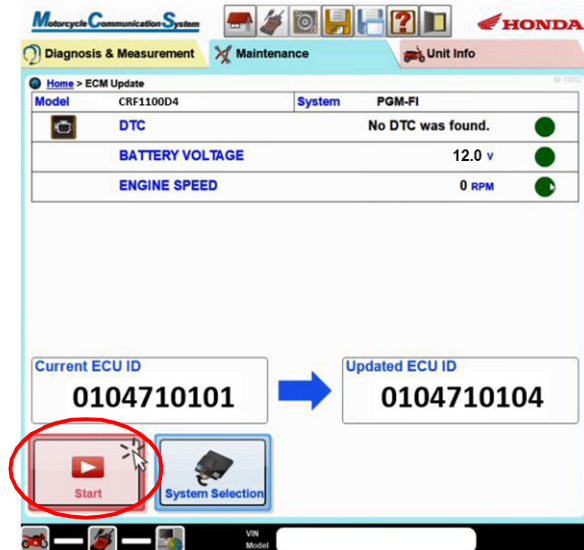


**Note:** If files are not saved correctly, an error may appear like shown below. Check the files are uploaded in the correct location (see Download the ECM Update File section above).

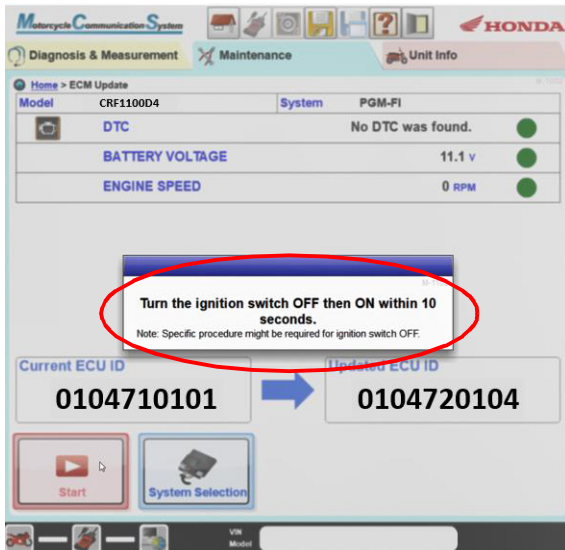


4. When the Updated ECU ID information populates on-screen as shown, click the Start button.

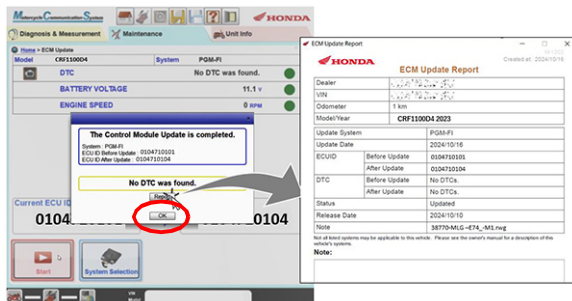
**Note:** ECU ID numbers will change for each vehicle type. The numbers shown below are for example only. The PGM-FI rewrite process will take approximately four minutes, indicated with a progress bar in green.



- Once the rewrite process is complete, turn the ignition switch to the OFF position and back ON within ten seconds.



- When the **Control Module Update Completed** window appears, click **OK**.



**Note:** A DTC may be triggered during the update. Simply clear the DTC using MCS.

The ECU ID should change from 0104710101 (depending on the model and year) to 0104710104.

The leading eight (8) digits of the ECU ID will vary based on the model and year.

